

Beginning Farmer & Rancher Development Program Project Director's Meeting 2017

Nashville, TN

September 25 –28, 2017



TENNESSEE
STATE UNIVERSITY

College of Agriculture
Cooperative Extension

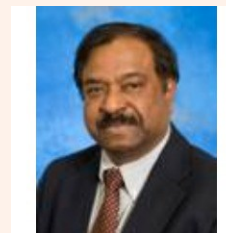


US Army Veteran, Matt Smiley
Source: USDA. gov

In 1991, Fitzroy Bullock (Roy) joined the University of Tennessee as an Associate Professor after spending nine and one-half years at The University of Georgia as a weed scientist. Crops covered in Tennessee on small and large commercial farms were Vegetables, Fruits, Soybean, Nurseries, Turf and Ornamentals, Roadsides, Non-crop lands, Pastures, and limited work on Corn and Cotton. In 2000 by a mutual joint agreement between Tennessee State University and The University of Tennessee he was assigned the responsibilities to lead and coordinate the development of a proactive small farms educational program for both Tennessee State University and The University of Tennessee. This new assignment allowed a 60/40 percent split between Tennessee State University and The University of Tennessee respectively.

He presently serves as/on:

- County TSU program leader
- Co-chair 1st and 6th National Small Farm Conference
- Chair of 13th National Small Farm Expo
- Program Leader for Tennessee State University ANR Agents



**Fitzroy Bullock, PhD.,
Extension Professor
& Agriculture
Program Leader,
Dept. of Agriculture
& Environmental
Sciences**

As Deputy Director at the National Institute of Food and Agriculture (NIFA) of USDA, leads NIFA's Institute of Food Production and Sustainability (IFPS), which supports research and extension activities in plant, animal, and agricultural systems. IFPS manages a budget of about \$660 M for competitive and capacity grants. Prior to joining NIFA, he was a research administrator at the National Science Foundation (NSF) – Division of Molecular and Cellular Biosciences, where he served as division director, deputy division director, and program director. As the division director, he was responsible for an annual budget of approximately \$125 million in research grants. In addition to leading the division, he managed many inter-directorate programs at NSF, developed collaborations with agencies in other countries, and represented NSF in several interagency activities, such as National Science Advisory Board on Biosecurity and the Nanoscale Science, Engineering, and Technology Subcommittee of the National Science and Technology Council.

Prior to joining NSF, he was a professor in the Department of Biochemistry, Biophysics, and Molecular Biology at Iowa State University, and was an assistant professor in the Division of Biology at Kansas State University. As a researcher at these universities, he received more than \$4 million in research grants from federal and private sources including funding from NIFA, NSF, and NIH. Chitnis authored over 100 peer-reviewed or invited publications in the areas of plant biochemistry, photosynthesis and proteomics. He has mentored over 50 undergraduate students, MS and PhD students, post-doctoral fellows, and AAAS fellows.

Chitnis has a B.S. in botany/plant breeding from the Konkan Agricultural University in India, an M.S. in genetics/biochemistry from the Indian Agricultural Research Institute, and Ph.D. in biology from the University of California at Los Angeles



**Parag Chitnis, PhD.,
Deputy Director,
NIFA**

Robert Craven is an Extension Economist and Director of the Center for Farm Financial Management, Department of Applied Economics, University of Minnesota. Areas of specialty include business management, credit analysis and grain marketing. His work for the Center has focused on development of FINPACK, nationally recognized ag credit analysis software. He is also on the development team for the Winning the Game grain marketing education programs. He has been an invited speaker at numerous conferences and seminars including the National ABA Ag Bankers Conference and the USDA Ag Outlook Forum. He has also taught over 400 workshops on farm management and marketing.

Mr. Craven is also actively involved in a 1200 acre family farming operation in southwestern Minnesota. He has a B.S. degree in Animal Science and an M.S. degree in Agricultural Economics from the University of Minnesota. Bob's e-mail address is: rcraven@umn.edu



**Robert Craven, CFFM
Director & Extension
Economist**



**Wesley Dean, PhD.,
National Program
Leader, NIFA**



**Denis Ebodaghe,
PhD., National
Program Leader,
NIFA**

Darlene Gunther joined TSU in 2015 as a research associate working with organic agriculture graduate students. She now works with extension coordinating outreach throughout the state of TN. She comes to TSU with a history in biotechnology and nanotechnology research and holds a double Master's degree in physics and Material Science from Vanderbilt University in Nashville, TN. Darlene lives on 7 acres in rural Tennessee, where she enjoys gardening, sheep, and several pets. Her interest in Agriculture lured her to Tennessee State University in 2015. In the fall of 2016, she began working with Cooperative Extension Outreach where she enjoys working with small farmers, urban farmers, and other outreach opportunities.



**Darlene Gunther,
Research Associate,
Dept. of Agriculture
& Environmental
Sciences**

Kevin Klair is an Extension Economist at the Center for Farm Financial Management in the Department of Applied Economics at the University of Minnesota. He has more than 30 years of experience teaching farm management workshops and developing farm management software tools. He has had a major role in the development of a number of farm management tools including AgPlan: an online business planning tool that has been used to develop over 60,000 business plans; the Ag Risk & Farm Management Library; Farm Answers, the beginning farmers information clearinghouse; and the FINPACK credit analysis software.

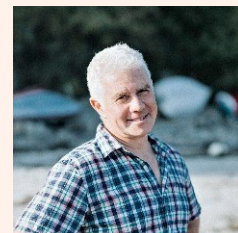


**Kevin Klair, CFFM
Associate Director &
Extension Economist**

Craig Lapine is the founder and executive director of Cultivating Community. Cultivating Community grows sustainable communities by expanding access to healthy, local food; by empowering youth and adults to play diverse roles in restoring a local, sustainable food system; and by modeling, teaching, and advocating for ecological food production.

Since 2001 Cultivating Community has run programs that use a food justice lens to build leadership, civic engagement, and environmental ethics among teens. It supports garden-based education for elementary and middle school students throughout southern Maine. The organization leads and administers the City of Portland's community garden network and operates a network of farm-stands plus a mobile market that are active across many of Maine's population centers, including Portland, South Portland, Lewiston, Auburn, Gorham, and Westbrook. These are all accessible to customers using SNAP and WIC benefits. Cultivating Community offers a Citizen Gardener Workshop Series to create and empower home and community gardeners, and its New American Sustainable Agriculture Project (NASAP) is Maine's largest land-based farmer training program.

Craig has been a PD or co-PD on several successful NIFA-funded projects including several supported by Community Food Projects and the Beginning Farmer and Rancher Development Program. He is a past president of the Maine Organic Farmers and Gardeners Association and co-founded what is now the Portland Food Council. He is on the network team for Food Solutions New England—the UNH-based entity that convenes New England's annual Food Summit and that published the New England Food Vision. He holds an A.B. in English Literature from Princeton University (1985) and an M.Ed. in Teaching & Learning from the Harvard Graduate School of Education (1998).



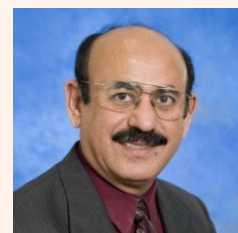
**Craig Lapine,
Founder/Executive
Director - Cultivating
Community**

J. Latrice Hill serves as an Assistant to the Deputy Administrator of Field Operations, where she is Director of the Farm Service Agency's (FSA) Office of Program Education and Stakeholder Engagement. In this position, Hill provides outreach policy and guidance to FSA leadership and field staff located in FSA's 2,124 offices across the country. In 2011, Hill was selected as the Outreach Program Lead in the Field Operations Division, issuing the first ever established policy for program outreach. She was later selected as Director of Outreach in 2013. Hill began her federal career as a clerk with the Farm Service Agency (then known as the Farmers Home Administration). Later, she served in the positions of loan officer and district outreach coordinator where she was responsible for determining feasibility, assessing financial situations and risks, approving and servicing borrower farm loan accounts for six counties. With a strong background in communications and passion for serving others, Hill was selected to serve as the FSA State Public Relations & Outreach Specialist, overseeing outreach activities in 71 counties. In that position, Hill received several awards and recognition for her collaborations and work with rural farmers and students as well as being appointed by two U.S. Secretaries of Agriculture to serve on the National Advisory Committee for Beginning Farmers and Ranchers for three two year terms. Hill continues to be an active volunteer in the community and is a member of numerous organizations. A native of Mississippi, Hill received her bachelor's degree in Business Administration from Belhaven University in Jackson, Mississippi. She maintains residences in Mississippi and Virginia with her two children.



**J. Latrice Hill,
Assistant to Deputy
Administrator for
Field Operations,
Farm Service Agency**

Latif Lighari joined TSU in February of 2011 as Associate Dean for Extension. He served as Director of South Dakota Cooperative Extension Service; Associate Dean, College of Agriculture & Biological Science, and Professor, Agricultural Education at South Dakota State University, Brookings, South Dakota from 2008 through 2011. He has been working in extension since 1984 and in Agriculture since 1980. Latif holds a PhD. in Agricultural Education from University of Missouri, a B.S. in General Agriculture a M.Sc. Agricultural Extension (Pakistan) and a B.Sc in Agricultural Engineering (Pakistan).



**Latif Lighari, PhD.,
Associate Dean,
Extension, College of
Agriculture**

Curtis Mahnken joined the Center for Farm Financial Management in 2010 as an Extension Economist. Prior to arriving at the center, he spent four years with the University of Kentucky as an Area Extension Specialist in Farm Business Management. While at UK, he authored the 2008 Dairy Enterprise Analysis for KFBM as well as participated as a judge for the Southern Dairy Challenge. Curtis received an M.S. in Agricultural Economics from Michigan State University. He grew up on a 100 cow dairy farm in southern Illinois and has been described as having milk running through his veins.

Curtis received an M.S. in Agricultural Economics from Michigan State University. He grew up on a 100 cow dairy farm in southern Illinois and has been described as having milk running through his veins.



**Curtis Mahnken,
Extension Economist**

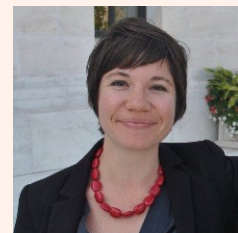
Hussein Muktar is the proprietor of Hussein's Family Farm, a mixed vegetable operation in Lisbon, Maine that markets it produce through CSA shares, farmers' markets, and wholesale accounts. He is also on the staff of Cultivating Community's New American Sustainable Agriculture Project (NASAP) where he conducts outreach to prospective farmers in Maine's many and growing refugee and immigrant communities. He also works closely with service providers and community organizations to facilitate trainings and other program opportunities. A trained translator and interpreter, Hussein supports other Cultivating Community staff as well as outside service providers with interpretation services. He is also himself a teacher and trainer within NASAP, offering workshops on production, marketing, and risk management that derive from his own experience as a beginning refugee farmer in Maine.

Born in Somalia, Hussein was educated in refugee camps in Kenya. He was resettled in Vermont in 2005 where he lived and worked for two years. Hussein began working with NASAP in 2007, first as a consultant and since 2010 as a staff member. In 2012 he completed New Entry Farm Business Planning course through Tufts University. He serves on the board of US/Kenya/Somalia Cross Border Association, an organization that assists Somali Bantu people at home and in the diaspora.



**Hussein Muktar,
Hussein's Family
Farm - Cultivating
Community**

Deputy Policy Director for the National Sustainable Agriculture Coalition, a non-profit organization based in Washington, D.C. that represents over 100 farm, food, conservation, and rural community grassroots organizations around the country on federal farm policy. Since 2011, she has led the coalition's federal policy work related to beginning farmers – focusing on the complex agricultural policy issues of how to improve new farmer access to capital, land, markets, and crop insurance. Previously, Obudzinski worked at the U.S. Department of Agriculture and also at the Leopold Center for Sustainable Agriculture. She currently serves on the USDA Advisory Committee on Agricultural Statistics. Obudzinski has a background in Agriculture and Food Policy, and holds degrees from the University of Wisconsin and Tufts University.



**Juli Obudzinski,
Deputy Policy
Director for the
National Sustainable
Agriculture Coalition**

Research and Education Specialist at the Center for Agroecology & Sustainable Food Systems (CASFS) at the University of California, Santa Cruz. She received her M.S. from the University of Wisconsin-Madison in Continuing and Vocational Education, where she focused on research and program evaluation methods. For the past 16 years at CASFS, she has implemented social issues research studies regarding sustainable food systems, developed extension materials and conducted program evaluations. She has designed and implemented evaluations for beginning farmer training programs, agroecology focused STEM programs and farm-to-school related initiatives. Before joining CASFS, she conducted evaluations in the field of community development and mental health. She is a co-evaluator and co-author of the forthcoming report: Cultivating the Next Generation: An Evaluation of the Beginning Farmer and Rancher Development Program (2009 to 2015), led by the National Sustainable Agriculture Coalition.

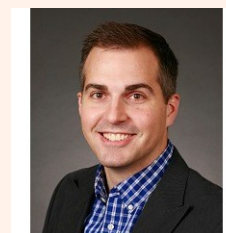


**Jan Perez, Research
& Education
Specialist, Center for
Agroecology &
Sustainable Food
Systems**

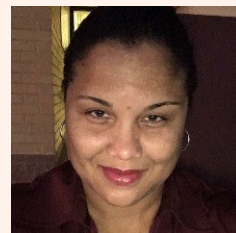


**Chandra Reddy, PhD.,
Dean & Director of
Research/
Administrator of
Extension, College of
Agriculture**

Jeff's focus is design and management of CFFM's websites, video development, social media and brand identity. He speaks annually at conferences and private meetings on topics related to Social Media, User Experience, Design Standards and Emerging Technologies.

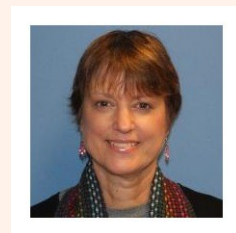


**Jeff Reisdorfer,
Senior
Communications
Specialist:**



**Desiree Rucker, PhD.,
Program Specialist,
Biological Sciences,
NIFA**

Socio-economist volunteer for the United States Peace Corps in Nepal is characteristic of her cross-disciplinary interests. Conducted in the workplace, her doctoral research focused on the effects of business-oriented practices in the nonprofit sector. Working as a marketing executive, and more recently as an evaluation and research consultant, Williams has more than 25 years of experience in the corporate and nonprofit sectors. As a program evaluation consultant she has evaluated numerous beginning farmer and urban agriculture programs for both nonprofits and universities. In addition, she teaches in the Lubar School of Business at the University of Wisconsin-Milwaukee. Williams earned a B.S. in Agriculture from the University of Wisconsin-Madison, an MBA in Marketing from the University of Wisconsin-Whitewater and a PhD in Social Anthropology from the University of Wisconsin-Milwaukee.



**Ann Williams,
Program Evaluation
Consultant**