

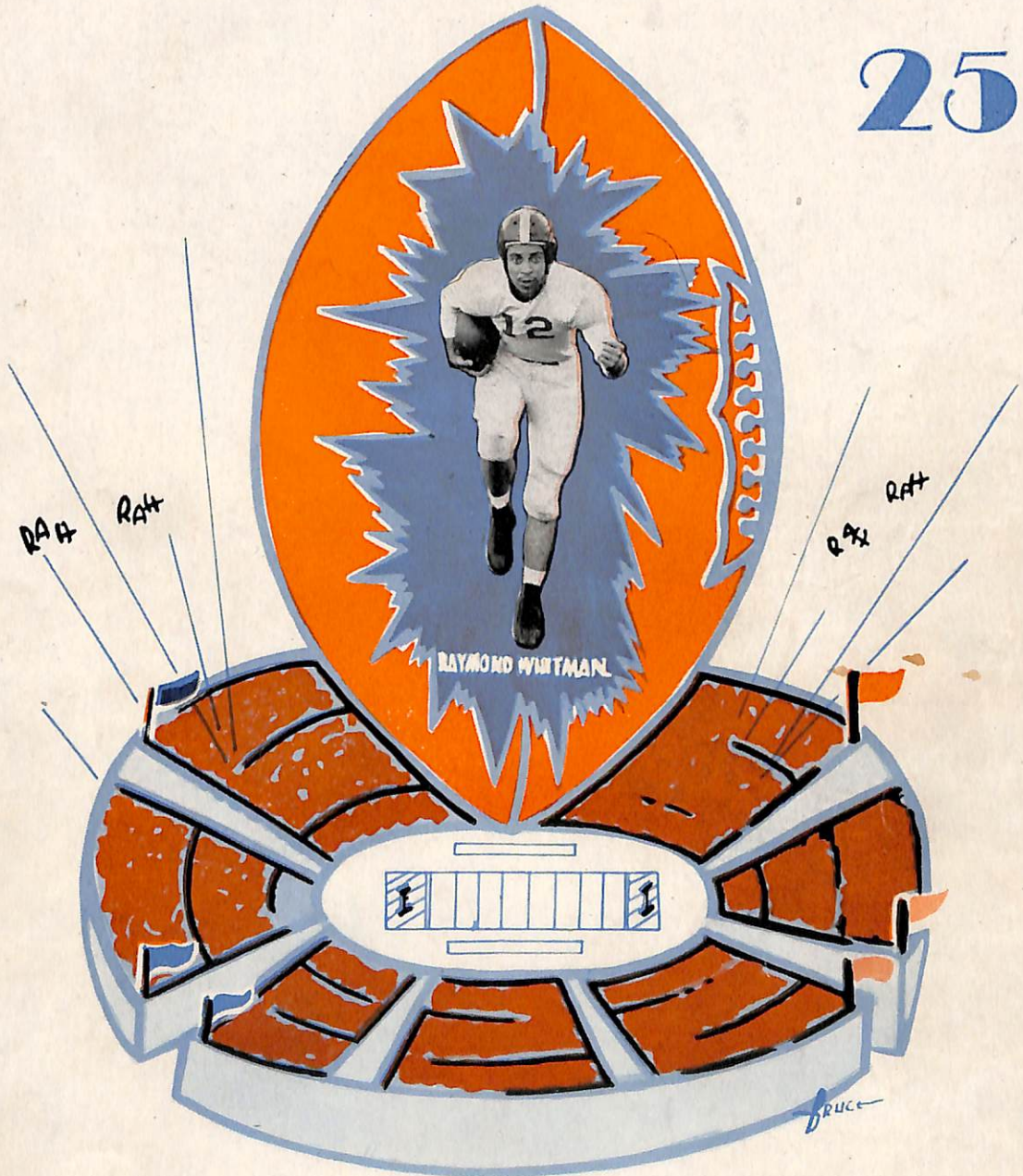
TS4
coll

OFFICIAL

HOME-COMING

Souvenir Program

25c



TENN. STATE COLLEGE

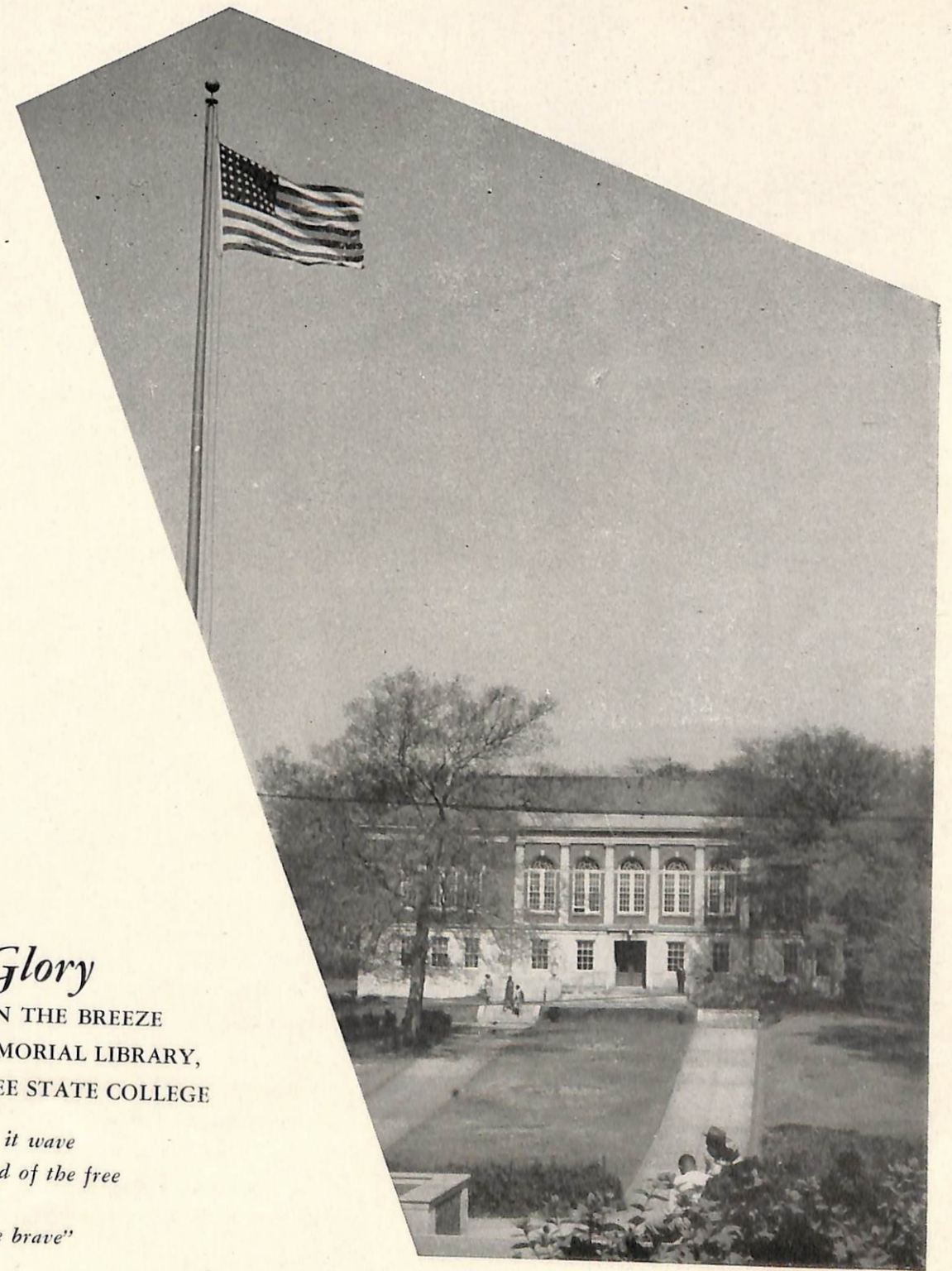
VERSUS

KNOXVILLE COLLEGE

THURSDAY, NOVEMBER 28, 1946, 2 P.M. ★ STATE COLLEGE STADIUM

c2
SPECIAL COLLECTIONS

Tenn. State Univ.



Old Glory

WAVES IN THE BREEZE
OVER MEMORIAL LIBRARY,
TENNESSEE STATE COLLEGE

*"Long may it wave
o'er the land of the free
and the
home of the brave"*

TURNING BACK THE FOOTBALL PAGES OF TIME

By O. J. CHAPMAN

1. FOOTBALL is the oldest of all modern sports. The Bible speaks of a game in which the boys kicked the ball around. In those days the game was played on a field with sidelines, a center line, and goal lines. The object of the game was to pass, kick or carry the ball across the opponent's goal line.
2. Football was a *kicking* and *catching* game in England until 1823, when a determined and imaginative young player named William W. Ellis revolutionized the sport by picking up the ball and doing the first piece of open-field running to his opponent's goal line. The captain of his team apologized for Ellis' unseemingly poor conduct. However, the idea of running with the ball soon spread throughout England and today a huge tablet memorializes Ellis' famous dash.
3. The first football game between colleges in this country took place on November 6, 1869, seventy-seven years ago, at New Brunswick, New Jersey, when the "little boys" from old Rutgers licked a much older, larger, and stronger Princeton team.
4. The forward pass was used more or less illegally (when the referee wasn't looking) from 1876 until it was legalized in 1906 by John W. Heisman, who saw its possibilities and campaigned for its adoption.
5. Playing on a 110-yard field, Wyllys Terry, half-back on the 1884 Yale team, made the longest run in football history. He took the ball five yards behind his goal line and sprinted the long distance of 115 yards in a game against Wesleyan.
6. Today dropkicking is a lost art, but in 1913 Charley Brickley of Harvard kicked *five* field goals that enabled his team to defeat Yale 15 to 5.
7. In 1833 the point system method of scoring was introduced for the first time. At first a touchdown was worth two points, a goal following a touchdown four points! Under that system the main purpose for getting a touchdown would be to have an opportunity at kicking the goal. The present scoring system was adopted in 1912.
8. The first college football games had no time limits! Columbia and Rutgers battled for three and a half hours in 1874 to a scoreless tie. The sixty-minute time limit was not adopted until 1906, which was sixty-three years after the first collegiate football game was played.
9. The greatest record compiled by any football coach was that of the immortal Knute Rockne. In thirteen years against the strongest competition in the country, his famous Notre Dame Ramblers won 105 games, lost twelve, and tied five. It looks like "Doc" Blanchard and Glen Davis will have to remain at West Point for ten years if Army's Earl Blaik expects to equal Rockne's record.



MR. HENRY ARTHUR KEAN

Head of the Department of Health and Physical Education, Director of Athletics, and Head Football Coach, Tennessee A. and I. State College. A.B., Fisk University, 1925; M.S., Indiana University, 1943.

D E D I C A T I O N

Dedicated to Mr. Henry Arthur Kean, whose Tennessee State "Tigers" have won since 1944 twenty-five out of twenty-nine games, including formidable opponents from each of the four Negro athletic conferences, and whose knowledge, vision, insight, and integrity have won for him admiration, gratitude and respect.

THANKSGIVING HOME-COMING

This official Souvenir Program is published by the Tennessee A. and



DR. O. J. CHAPMAN
Professor of Education and Psychology



MRS. ANNA G. SASSER
Chairman and Instructor in Mathematics



DR. THOMAS E. POAG
*Director, Division of the Humanities;
Director, Tennessee State College Theater*



MISS E. JEANETTE VERNON
Assistant, Bursar's Office



MISS COLLYE L. RILEY
Associate Professor of Library Science

STEERING COMMITTEE

I. State College Athletic Association and Edited by Dr. O. J. Chapman



MISS JUANITA C. REED
Instructor in Home Economics



MRS. PEARL W. GORE
Clerk, Veterans' Rehabilitation



MR. A. V. BOSWELL
Professor of Mathematics



MISS FRANCES E. THOMPSON
Associate Professor of Art



C. J. KINCAIDE
Manager of Veterans' Housing; Secretary to Athletic Sub-Committee



DR. WILLIAM LLOYD IMES
President, Knoxville College

To Our Friends and Neighbors
The Tennessee A. and I. State College
Nashville, Tennessee

Greetings at Home-Coming 1946!

Your celebration is a matter of interest to all Tennessee, and we are proud to send our football squad to your annual classic, and to wish them well while they contest with your mighty grid warriors on your field.

Good athletic teams are a spiritual asset to any college, when along with physical skill there goes the development of character.

With best wishes!

Sincerely,

WM. LLOYD IMES, *President*



DR. WALTER S. DAVIS
President, Tennessee A. and I. State College

It is particularly fitting at this Thanksgiving season, when the nations of the world are again at peace, that I accept this opportunity on behalf of 2,126 students, the faculty, and staff of Tennessee State College to greet and welcome home alumni, former students, and friends whose faithfulness and loyalty to every cause make such occasions possible.

To our visiting institution, Knoxville Collège, we offer the "Tennessee State College Spirit" created by the personal attitudes and qualities of its faculty and staff, alumni, and students and by which we are known and felt.

The cherished right of American colleges to create in their youth a devout faith in the righteousness of the democratic ideal of life is a growing challenge to world education. Our college, likewise, based on the principles and philosophy that have caused our nation to emerge the victors, seeks to take a broad view of education and its function. Thus justifying our position as to the aims, ideals, and philosophy of education, our athletic program, with the Thanksgiving classic of football as a feature, is one of the many opportunities granted the student to grow, develop, and acquire the skills and knowledges which will help him to become the best possible citizen in a democracy and in turn to help create and direct the forces which move civilization in a desirable direction.

May this day and all days to come demand our best wherever the "grid-iron" of life may be.

WALTER S. DAVIS, *President*

TENNESSEE STATE COLLEGE BEGINS 35th YEAR WITH RECORD ENROLLMENT

Tennessee A. and I. State College began the academic year 1946-1947 with the largest enrollment in the history of the college.

According to the registrar's office, there are 2,126 enrolled, with 1,071 men and 1,055 women, of which 977 of the total number are freshmen. Opening convocation was held Thursday, October 3, at 10:00 A.M. in the college auditorium. President Davis welcomed the large student body and challenged them to take advantage of every opportunity offered and to use wisely the facilities and resources that the State makes available to them.

HISTORICAL STATEMENT

The State Normal Schools of Tennessee were established by an act of the General Assembly of 1909. That Act is popularly known as the General Education Bill, and included appropriations for all public school agencies of the state.

Agricultural and Industrial State Normal School at Nashville opened June 19, 1912. In 1922, the institution was raised to the status of a four-year state teachers' college and empowered to grant the bachelor's degree. The first degree class was granted in June, 1924.

In 1941, the General Assembly authorized the State Board of Education to establish a program of studies in elementary, secondary, and vocational education leading to the master's degree.

The plant is evaluated at more than three million dollars and is located within the corporation limits of Nashville, overlooking the gentle slopes leading to the Cumberland River.

PURPOSE OF THE COLLEGE

The General Education Law of 1909, which created the state teachers' training schools, clearly defined the purpose for which they were established. The law outlined the

nature and scope of "the education and professional training of the teachers for the public schools of the state." Accordingly, Agricultural and Industrial State College attempts to give those who attend it the education, discipline, training, and skill that will best prepare them to teach in public schools.

The purpose of an educational institution may be stated in terms of services required by society, in terms of the changes to be produced in students or in terms of both. As the only state supported higher educational institution for Negroes in Tennessee, the college has the obligation to fulfill the following aims:

1. To perform all of the services set forth for a land-grant institution.
2. To offer as complete a program of work as is possible in the fields of general and applied knowledge as is commonly represented by schools of Liberal Arts, Education, Agriculture, Home Economics, Engineering, Business, Medicine, Law, and related fields.
3. To offer an opportunity for the development of the citizens of the state to insure maximum contribution based upon reasonable opportunity for preparation in specialized fields.
4. To give leadership to practitioners in these fields.
5. To serve as a capstone of the state educational system.

ACCREDITATION

The college is a member of and accredited by the American Association of Teachers Colleges as a Class A institution. It is a member of the Teachers College Extension Association.

| | |
|-----------------------------|-------|
| Faculty and Staff—all Negro | 185 |
| Enrollment—coeducation | 2,016 |
| Number of buildings | 26 |
| Total acreage | 320 |

INSTRUCTIONAL STAFF, 1946-1947

WALTER S. DAVIS, Ph.D., *President*
GEORGE W. GORE, Jr., Ph.D., *Dean*

DIVISION OF AGRICULTURE

WALTER A. FLOWERS, B.S., Alcorn College; M.S., Iowa State College; Director of the Division and Professor of Agriculture

Walter S. Davis, B.S., Tennessee State College; M.S., Ph.D., Cornell University; President of the College and Professor of Agriculture

Alfred W. Shute, B.S., University of Minnesota; M.S., Iowa State College; Head of the Department and Professor of Animal Husbandry

Major F. Spaulding, B.S., A. A. and T. College; B.S., M.S., Cornell University; Ph.D., Massachusetts State College; Head of the Department and Professor of Agronomy

Marian A. Richards, A.B., University of Pennsylvania; M.S., Atlanta University; Ph.D., Iowa State College; Part-Time Associate Professor of Plant Sciences

Neal McAlpin, B.S., Tennessee State College; M.S., University of Wisconsin; Assistant Professor of Horticulture

David A. Williston, B.S., Cornell University; Professor of Horticulture and Landscape Architecture

Henry L. Taylor, B.S., M.S., Tennessee State College; Assistant Professor of Poultry

Henry C. Hardy, B.S., Tennessee State College; Farm Manager and Instructor in Farm Management and Farm Crops.

DIVISION OF BUSINESS

LEWIS R. HOLLAND, B.C.S., M.C.S., New York University; Acting Director and Associate Professor of Economics and Business Administration

Adolph T. Scott, A.B., Samuel Huston College; M.A., University of Pennsylvania; Associate Professor of Economics and Business Administration

*Cecille V. Evans, B.S., Langston University; M.A., Northwestern University; Assistant Professor of Business Education

Julia V. Henderson, B.S., Southern University; M.A., Columbia University; Assistant Professor of Business Education

Mary L. Jackson, B.S., Tennessee State College; Instructor in Office Administration

Helen L. Glover, B.S., Tennessee State College; Assistant Instructor in Business Education

Mattie L. Gordon, B.S., Tennessee State College; Assistant Instructor in Office Administration

DIVISION OF EDUCATION

GEORGE W. GORE, JR., A.B., DePauw University; Ed.M., Harvard University; Ph.D., Columbia University; Dean of the College; Director of the Division and Professor of Educational Research

*On leave for 1946-1947.

Oscar J. Chapman, A.B., Lincoln University (Pa.); A.M., University of Michigan; Ph.D., Ohio State University; Professor of Secondary Education

Henry A. Kean, B.S., Fisk University; M.S., Indiana University; Head of the Department and Professor of Health and Physical Education

Lua S. Bartley, A.B., Howard University; M.S., University of Michigan; Associate Professor of Health and Physical Education

Dorothy N. Campbell, A.B., Prairie View University; M.A., University of Iowa; Associate Professor of Music

Jordan D. Chavis, A.B., M.A., Fisk University; Associate Professor of Music

Montraville I. Claiborne, A.B., Fisk University; M.A., University of Michigan; Associate Professor of Psychology

Lois H. Daniel, B.S., Tennessee State College; B.L.S., Hampton Institute; M.A., University of Chicago; Head of the Department and Associate Professor of Library Science

James C. Finney, A.B., Morgan College; M.A., Howard University; Associate Professor of Adult Education

Thomas H. Hughes, A.B., West Virginia State College; M.S., Cornell University; Associate Professor of Health and Physical Education

Frances A. Sanders, A.B., Spelman College; M.A., Columbia University; Head of the Department and

TENNESSEE STATE COLLEGE BEGINS 35th YEAR WITH RECORD ENROLLMENT

Associate Professor of Elementary Education

Frances E. Thompson, B.S.A., Massachusetts Art School; M.A., Harvard University; Foreign Study, University of Prague, Czechoslovakia; Associate Professor of Art

†Jessie E. Abbott, B.S., Tuskegee Institute; M.S., University of Wisconsin; Assistant Professor of Health and Physical Education

Clinton D. Crooks, B.S., Kentucky State College; M.S., University of Michigan; Assistant Professor of Health and Physical Education

Thomas Harris, B.S., Tuskegee Institute; B.S., Wilberforce University; Assistant Professor of Health and Physical Education and Dean of Men
Ophelia V. Lewie, A.B., Allen University; M.A., University of Michigan; Assistant Professor of Elementary Education and Psychology

*Eunice S. Matthew, B.S., Hunter College; M.A., Columbia University; Assistant Professor of Elementary Education and Supervision

Roberta O. Peddy, B.S., Winston-Salem Teachers College; M.A., University of Michigan; Assistant Professor of Elementary Methods and Supervision

Collye L. Riley, A.B., Clark College; B.L.S., Hampton Institute; Assistant Professor of Library Service

Dorothy L. Stevens, B.S., Tennessee State College; B.L.S., University of Chicago; Assistant Professor of Library Service

Marie B. Strange, American Conservatory of Music; Nakutin School of Voice; Assistant Professor of Music
Samuel H. Freeman, B.S., Tennessee State College; M.D., Meharry Medical College; Instructor in Health and Physical Education

Vernon E. McCain, B.S., Langston University; Instructor in Health and Physical Education

Velma M. Singleton, A.B., Fisk University; B.L.S., Atlanta University; Instructor in Library Service

Donley H. Turpin, B.S., Tennessee State College; D.D.S., Meharry Medical College; Instructor in Health and Physical Education

DIVISION OF ENGINEERING AND INDUSTRIAL EDUCATION

WILLIAM V. HARPER, SR., B.S., South Carolina State A. and M. College; Itinerant Teacher Trainer of Trade and Industrial Education and Acting Director of the Division of Engineering and Industrial Education

Preston E. Stewart, B.S., South Carolina State A. and M. College, Head of the Department of Building Trades

George B. Turman, C.G.S.I., D.M.I., D.M.E., A. and E. United States Department of Commerce; C.A.A., Head of the Department of Auto and Aircraft Mechanics

Furman F. Williams, B.S., South Carolina State A. and M. College; Head of the Department of Metal Trades

L. Winter McKissick, A.B., Fisk University; B.S., Howard University; Visiting Professor of Architectural and Mechanical Drawing

James E. Taylor, Jr., B.S., M.A., State University of Iowa; C.F.I., United States Department of Commerce; C.A.A., Visiting Professor of Aviation

Earl L. Gray, Trade Certificate, Tuskegee Institute; Technician, Shoe Repairs

Carlyle A. Hall, Technician, Auto Mechanics

W. Elbert Johnston, Normal Diploma and Trade Certificate, Hampton Institute; Technician, Masonry

Ernest Mabins, B.S., Tennessee State College; Technician, Welding

DIVISION OF HISTORY AND GEOGRAPHY

MERL R. EPPSE, B.A., Drake University; M.A., Columbia University; Director of the Division and Professor of History

Elsie M. Lewis, B.A., Fisk University; M.A., University of Southern California; Ph.D., University of Chicago; Professor of History

William F. Butler, B.A., M.A., Colorado College of Education; Associate Professor of History

Kenneth A. Johnson, B.A., Colby College; M.A., Harvard University; Associate Professor of History

Fredrick J. D. McKinney, B.S., M.A., Ball State Teachers College, Associate Professor of Geography

Mazie O. Tyson, B.S., Howard University; M.A., Ohio State University; Associate Professor of Geography

Raleigh A. Wilson, B.A., M.A., Iowa State University; Associate Professor of History

Alma O. Cope, B.A., Johnson C. Smith University; Graduate Assistant in History

DIVISION OF HOME ECONOMICS

ERMA B. JONES, B.S., Prairie View University; M.S., Colorado State College; Director of the Division and Professor of Home Economics Education

Christine Alexander, B.S., Tennessee State College; M.A., Columbia University; Associate Professor of Foods and Nutrition

Matty C. Flowers, A.B., Lane College; M.S., Iowa State College; Itinerant Teacher Trainer and Associate Professor of Home Economics Education

Geraldine B. Fort, B.S., Tennessee State College; M.A., Columbia University; Associate Professor of Textiles and Clothing

Selena A. Joseph, B.S., Southern University; M.A., Michigan State College; Assistant Professor of Foods and Nutrition

*On leave for 1946-1947.

†Resigned, September, 1946.

Sara E. Payne, B.S., Tennessee State College; M.A., Cornell University; Resident Teacher Trainer and Assistant Professor of Home Economics Education

Catherine B. McKinney, B.S., Tennessee State College; Instructor in Textiles and Clothing

Beulah S. Shute, B.S., University of Minnesota; Instructor in Foods and Nutrition

Miriam G. Towns, B.S., Framingham Teachers College (Mass.); M.S., Cornell University; Instructor in Child Development

Juanita C. Reed, B.S., Tuskegee Institute; Laboratory Assistant in Clothing

DIVISION OF HUMANITIES

THOMAS E. POAG, A.B., Morgan College; M.A., Ohio State University; Ph.D., Cornell University; Director of the Division of Humanities and Professor of English and Speech

George W. Gore, Jr., A.B., DePauw University; Ed.M., Harvard University; Ph.D., Columbia University; Professor of Journalism

Alma D. Jones, B.S., Tennessee State College; M.A., Columbia University; Professor of English

Earl L. Sasser, B.S., Shaw University; M.A., Ph.D., Cornell University; Professor of English

*Laura M. Averitte, B.S., Tennessee State College; M.A., Columbia University; Associate Professor of English

Crawford B. Lindsay, A.B., Talladega College; A.M., University of Michigan; Associate Professor of English

Virginia S. Nyabongo, A.B., Bennett College; M.A., Ph.D., University of Wisconsin; Part-time Associate Professor of Romance Languages

Frances E. Thompson, B.S., Massachusetts School of Art; M.A., Harvard University; Foreign study, University of Prague, Czechoslovakia; Associate Professor of Stage and Design

*Alma T. Watkins, B.S., Ohio State University; M.A., Columbia University; Associate Professor of Romance Languages

J. Randolph Fisher, A.B., A.M., Howard University; Assistant Professor of English

Marie B. Strange, American Conservatory of Music; Nakutin School of Voice; Assistant Professor of Music

Geneva Anderson, A.B., Wiley College; Instructor in English

Helena D. Black, A.B., Morris Brown College; M.A., University of Pennsylvania; Instructor in Romance Languages

Mary F. Carter, B.S., Tennessee State College; M.A., Fisk University; Instructor in English

Dorothy P. Jones, A.B., Bennett College; Instructor in English

Hinton C. Jones, A.B., Morehouse College; A.M., Cornell University; Instructor in English

TENNESSEE STATE COLLEGE BEGINS 35th YEAR WITH RECORD ENROLLMENT

THE ATHLETIC COMMITTEE

Millicent D. Jordan, A.B., Spelman College; M.A., Columbia University; Instructor in Speech and English

Blanche D. Sanders, A.B., Southern University; M.A., University of Michigan; Instructor in Speech and English

Hazel L. Wright, A.B., M.A., University of Michigan; Instructor in Romance Languages

Benton Adams, B.S., Tennessee State College; Assistant in Drama and Art

Edna M. Dozier, B.S., Tennessee State College; Graduate Assistant in English

DIVISION OF POLITICAL AND SOCIAL SCIENCE

MARY E. LEE, B.A., Ohio State University; M.S., Western Reserve University; Acting Director of the Division and Assistant Professor of Social Administration

Susie O. Bryant, A.B., Howard University; M.A., Columbia University; Ph.D., New York University; Professor of Political Science

Gladys B. Butler, A.B., M.A., Colorado College of Education; Assistant Professor of Sociology

LaVerne L. Lee, B.S., Prairie View University; M.A., Atlanta University; Instructor in Sociology

Rachel J. Patillo, B.S., M.S., Tennessee State College; Assistant Professor of Social Science and Director of Veterans' Affairs

Nora L. Roy, B.S., Ohio State University; Graduate Assistant in Social Administration

DIVISION OF SCIENCE

HUBERT B. CROUCH, A.B., Texas College; M.S., Ph.D., Iowa State College; Director of the Division of Science; Head of the Department and Professor of Biology

Alger V. Boswell, A.B., Wiley College; M.A., Northwestern University; Head of the Department and Professor of Mathematics

Edward G. Ferguson, Jr., B.S., M.S., Ph.D., University of Illinois; Professor of Biology

Carl M. Hill, B.S., Hampton Institute; M.S., University of Pennsylvania; Ph.D., Cornell University; Head of the Department and Professor of Chemistry

Leroy R. Posey, Jr., B.S., M.S., Ohio State University; Ph.D., University of Michigan; Head of the Department and Professor of Physics

Myron B. Towns, B.A., Atlanta University; A.M., Ph.D., University of Michigan; Professor of Chemistry

Marian A. Richards, B.S., University of Pennsylvania; M.A., Atlanta University; Ph.D., Iowa State College; Associate Professor of Biology

OTHER EMPLOYEES

Helen L. Glover, Secretary to the President

E. P. Johnson, Bursar

James A. Welch, Business Officer

E. J. Vernon, Bookkeeper

Mildred K. Gaines, Cashier

Martha Moore, Clerk Secretary, Bursar's Office

Ethel Moore, Clerk in Bursar's Office

Pearl W. Gore, Clerk, Veterans' Rehabilitation

Mary F. Carter, Assistant Registrar

Julia M. Atkins, Clerk in Registrar's Office

Lillian Barbor, B.S., Tennessee State College; Assistant in Library Circulation Department

Margaret R. Campbell, B.S., Tennessee State College; Assistant in Library Reference Department

LaVerne H. Holland, B.S., Samuel Huston College; Graduate Assistant in Testing Bureau

Bessie F. Kean, A.B., Kentucky State College; Circulation Librarian

Mattie E. Bious, B.S., Alcorn College; Dietician

Sabra Southall Conner, Clerk, Bursar's Office

Ethelyne Franklin, Clerk, Bursar's Office

Vera A. Howell, Clerk, Registrar's Office

Helyne Wilhoite, Secretary to Division of the Humanities

Camille D. Robinson, Secretary to Division of Home Economics

Cecil McArthur Ryan, Associate Professor of Industrial Education

Mary R. Hardy, Clerk, Post Office

Miss Nora L. Roy, Laboratory Assistant

Mrs. Lillian L. Barbor, General Library Assistant

Mr. Robert M. Gaines, B.S., Tennessee State College; Manager of Cafeteria

Virginia Starkey, Cafeteria Helper

Grady Sherrill, B.S., Tennessee State College; Assistant Engineer

Sarah Miller, Assistant Manager of Laundry

Ruby Scruggs, Laundry Helper

Lona M. Terrell, Laundry Helper

Mary E. Evans, B.S., Tennessee State College; Secretary to Division of Political and Social Science; Secretary to Division of History and Geography

Eleanor Lee Allen, B.S., Tennessee State College; Secretary to Division of Agriculture

Emma M. Owens, B.S., Tennessee State College, Secretary to Division of Education

Mattie B. Arrington, Secretary to Division of Sciences

Marjorie Singleton, B.S., Tennessee State College; Secretary to Division of Education

Rubye E. Harper, Secretary to Health and Physical Education Department

M. M. Brown, Library Consultant

Modestine Young, Assistant Librarian

J. E. Elliott, Cafeteria Consultant

Rose Faye Sanders, Clerk, Registrar's Office

Robert H. Jordan, A.B., A.M., University of Kansas; Assistant Professor of Biology

Martha M. Allen, A.B., Tougaloo College; M.A., Fisk University; Instructor in Biology

Sadie E. Gassaway, B.S., LeMoyné College; M.A., University of Illinois; Instructor in Mathematics

J. F. Grigsby, B.S., Lincoln University (Pa.); Part-time Instructor in Chemistry

Mary E. Hill, B.S., Virginia State College; M.S., University of Pennsylvania; Instructor in Chemistry

Annie G. Sasser, A.B., Shaw University; M.A., Prairie View University; Instructor in Mathematics

A. T. Piper, B.S., Lincoln University (Mo.); M.S., University of Minnesota; Part-time Instructor in Biology

Julia T. Hawkins, B.S., Morgan State College; Assistant Instructor in Chemistry

Catherine Maryland, B.S., Tennessee State College; Assistant Instructor in Biology

Ellen E. Quinland, B.S., Fisk University; Assistant Instructor in Biology

Allan Lott, B.S., Johnson C. Smith University; Graduate Assistant in Biology

Ruby Prigmore, B.S., Tennessee State College; Graduate Assistant in Chemistry

Lavenia Dumas, Matron

Mizilla Lynum, Head Cook

Rebecca Ball, Assistant Head Cook

Henry Kirby, Cafeteria Helper

Virginia Starkey, Cafeteria Helper

E. R. Hankal, Dean of Women

L. B. Watson, Matron

Vernon Randals, Matron, Supervisor of Recreation Hall

Corinne Hall Floyd, Nurse

Joseph R. Marks, Chief Engineer

Thomas Booker, Fireman

Homer Blankenship, Fireman-Engineer

Lorenzo Flowers, Fireman-Engineer

Edna Brooks, Manager of Laundry

Sarah Miller, Laundry Helper

George Payne, Auto Truck Operator

M. L. Morrison, Custodian of Buildings

E. L. Harris, Technician, Electricity

Leon C. Farbes, Tuskegee Institute; Superintendent of Maintenance Department and Instructor in Carpentry

James Carlton, Horticulturist

Henry E. Gowins, Foreman of Painters

Will Buchanan, Foreman of Interior Decorators

Shaw Brooks, Foreman of Plaster and Cement Work

Fannie M. Collier, Janitress

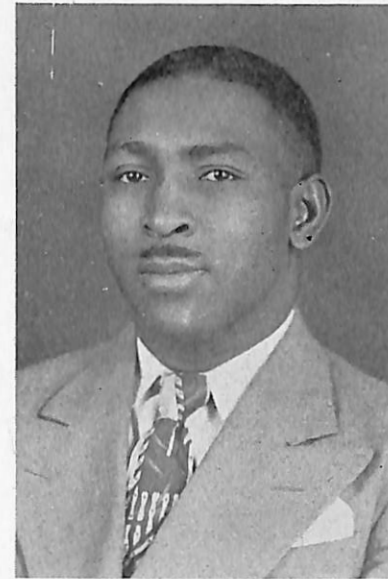
Henry C. Hardy, Farm Manager

T. H. Fitzpatrick, Farm Foreman

Charles H. Vernon, Farm Mechanic

Jeff Harris, Farm Technician

Earl L. Gray, Technician, Shoemaking



V. E. McKEAN
Assistant Coach



COACH H. A. KEAN
Chairman

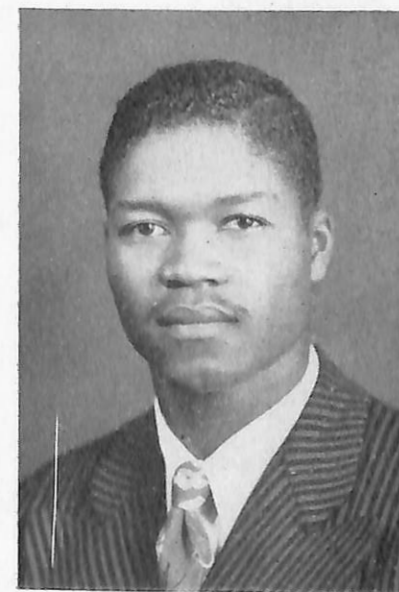


MR. A. V. BOSWELL
Professor of Mathematics

The Athletic Committee of Tennessee State College is a major unit of the college and its importance should not in any way be underestimated. The committee has developed the programs of intramural and intercollegiate sports into a well-rounded and diversified calendar and has brought the institution national recognition through its excellent development of the major and minor sports. In structure the Athletic Committee is similar to the Athletic Association of most colleges, and its purpose is to establish, admin-

ister, and supervise all athletic policies of the college, including the expenditures for improvement of athletics, the scheduling of games, the awarding of letters to deserving students, and the selection of coaches and other athletic aides.

All publicity in connection with the college's athletic program is managed by Dr. O. J. Chapman, Director and Professor of Education. Much credit and thanks go to Dr. Chapman for his untiring and ceaseless effort along this line.



CARLOS BRUCE
Artistic Painter for Department of Athletics Publicity



MISS LULA S. BARTLEY
Director of Women's Sports



DR. O. J. CHAPMAN
Director of Athletic Publicity and Business Manager of Athletics

Miss Knoxville College

and Omega Sweetheart of 1946



1. LOIS MAE GOINS, *Varsity Football Queen* for 1946, Knoxville College; 2. MARGARET ROSS, *Omega Sweetheart*, 1946; Elected by Iota Alpha Chapter, Omega Psi Phi Fraternity, Knoxville College; 3. Knoxville College *Varsity Football Queen* and Attendants. Center, LOIS MAE GOINS, *Queen*; left and right: RUTH CLAYTOR and BARBARA COATES, *Attendants*.

Miss Tennessee State College



MISS HARRIETT LOUISE JOHNSON

Division of Humanities

Member Ivy Leaf Club of Alpha Kappa Alpha Sorority

Harriett Louise Johnson, chosen as "Miss Tennessee State College" for the academic year 1946-1947, possesses the qualities characteristic of the honor bestowed upon her by 2,126 loyal students. Modest, charming, attractive, and stately are only a few of the queenly qualities that contribute to the total personality of Miss Johnson.

She is a native of Bowling Green, Kentucky, the daughter of the Reverend and Mrs. R. H. Johnson. She was graduated as valedictorian from the State Street High School of Bowling Green.

She is a junior in the Division of the Humanities with a major in English and a minor in Library Service. Miss Johnson is a member of the Ivy Leaf Club of Alpha Kappa Alpha Sorority, of the English Club, and the Student Christian Association.

The faculty and students of the college join in wishing for Miss Johnson a happy and glorious reign.

HISTORY OF KNOXVILLE COLLEGE

Knoxville College is chartered under the laws of the State of Tennessee and is duly authorized to transact business and confer degrees

HISTORY

The United Presbyterian Church was one of the earliest and most persistent champions of the cause of freedom for the Negro. It was the pioneer among the churches in taking up this cause. Fittingly, before the smoke of battle cleared away, in 1863, it put forth one of the first efforts to give him a suitable education in establishing the "McKee School" in Nashville, so-called from its first principal, Rev. Joseph G. McKee, and continued very successfully till 1873. Other schools were founded and maintained in various parts of the South. In 1872 after a careful survey of the whole field, Knoxville was selected as the place for a normal school and college, with the design of concentrating effort upon it. Rev. J. P. Wright was chosen superintendent of the school, which opened in September, 1875, in East Knoxville. It was moved to the present location the next year, when it was established as a college under the name which it now bears. Rev. J. S. McCulloch, D.D., was elected president in August, 1877; and he continued in the office till July, 1899. Rev. R. W. McGranahan, D.D., succeeded Dr. McCulloch as president in June, 1899, and continued in the office until July, 1918. Rev. J. Kelly Giffen, D.D., succeeded Dr. McGranahan in August, 1918, and continued in office until July, 1936. Dr. Samuel M. Laing took office as president on October 1, 1936, and was succeeded by Dr. John A. Cotton on October 1, 1940. Dr. Cotton retired June, 1942, and Dr. William Lloyd Imes took over the presidency on April 1, 1943.

ACADEMIC RECOGNITION

Knoxville College is a member of the Association of American Colleges and of the Association of Colleges and Secondary Schools for Negroes.

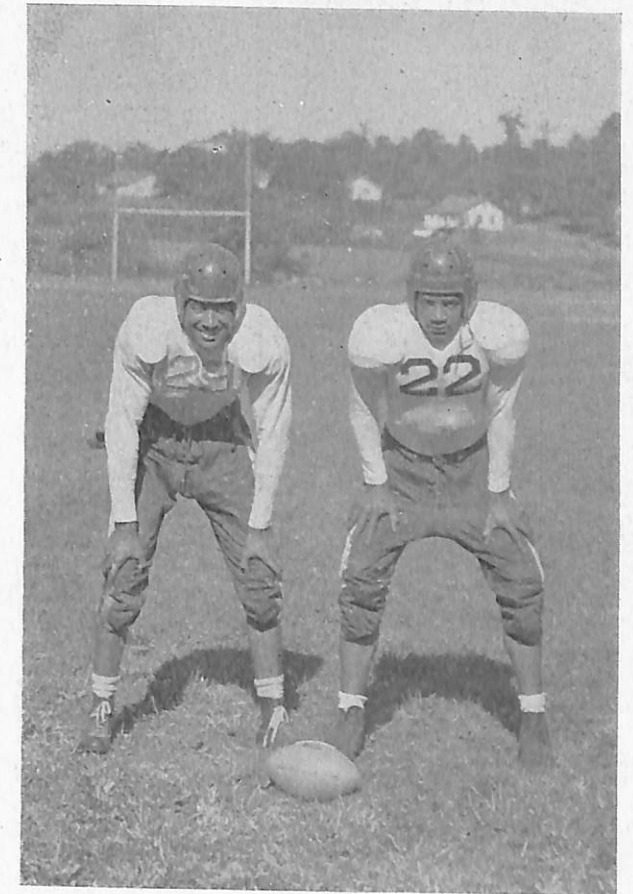
GROUNDS AND BUILDINGS

The college property, consisting of eighty acres, on which stand twelve buildings, besides the residences of the faculty, is valued at \$600,000. About twenty acres of this is set apart for the campus, affording ample room for artistic and recreational purposes.

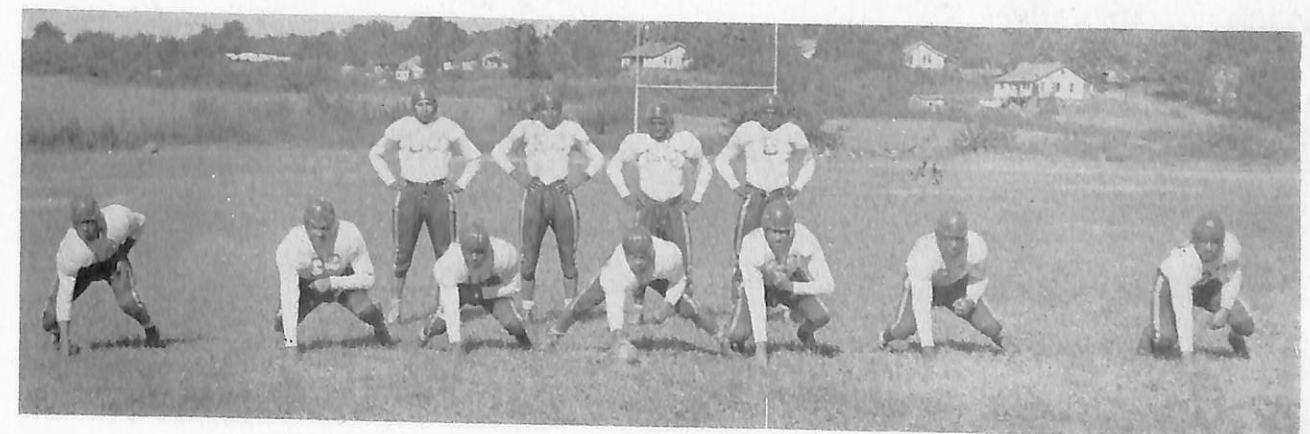
KNOXVILLE COLLEGE



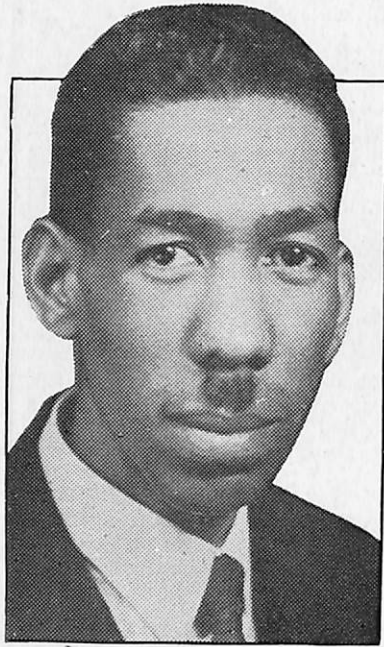
MISS MAYOLA KEITH
Senior, Knoxville College



SAM JONES, *right*, Captain; CLARENCE GREGORY,
left, Co-Captain, Knoxville College



Knoxville College First Team



DR. GEORGE W. GORE, JR., Ph.D.
Dean, Tennessee State College; Director, Division of Education; Chairman, Graduate Committee; Member, American Association of University Professors; National President of Alpha Kappa Mu Honor Society; Executive Secretary of the Tennessee Negro Education Association



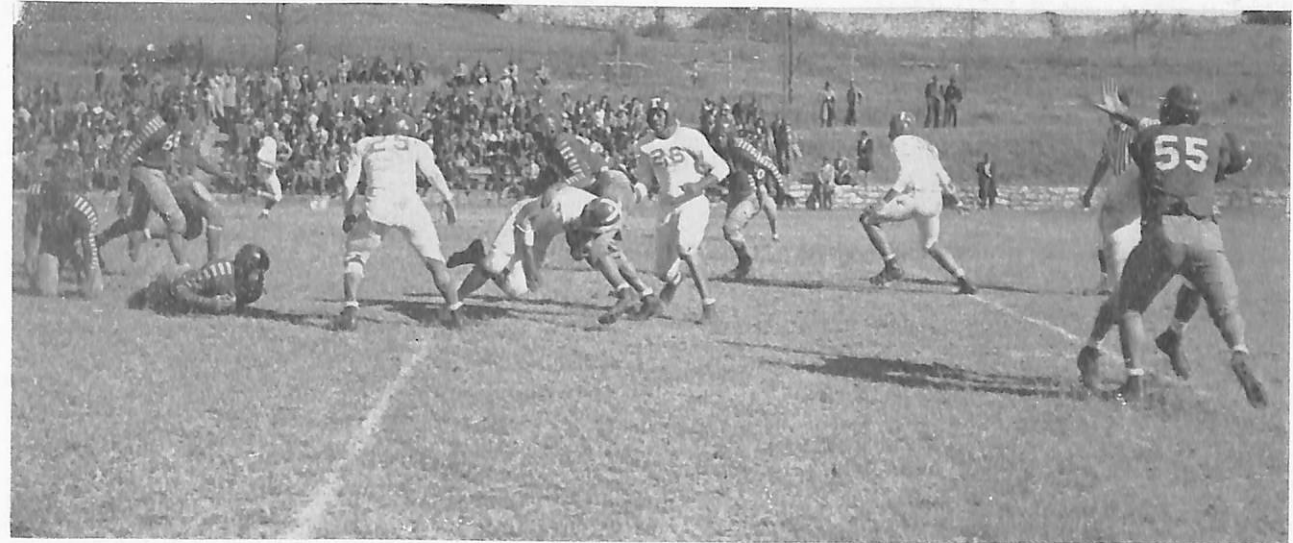
MR. R. E. CLAY
State Developer of Negro Education and Father of the Football Team



Administration Building, Tennessee State College



The lovely majorettes of the Tennessee State College Band go through a demonstration at half-time of the Tennessee-Langston University game in Nashville on October 5. Tennessee won, 27-0



Charles Williams, No. 9, gains twelve yards against Clark College in Nashville on October 12. Tennessee State won, 26-0



The colorful Tennessee State College Marching Band, directed by Professor J. D. "Chick" Chavis



TENNESSEE STATE COEDS LINE UP FOR HOME-COMING CELEBRATION

The lovely coeds of Tennessee State College represent all sections of the country from which returning students and graduates will come to witness the Alumni Thanksgiving Home-Coming Football Classic between the Tennessee State College and the Knoxville College teams. In the pictures above in street clothes and evening attire are, left to right: Miss Amelia Dorse, Sophomore Attendant, Memphis, Tennessee; Miss Mary Helen Reed, Freshman Attendant, Detroit, Michigan; Miss Harriett Louise Johnson, Junior, (Miss Tennessee State), Bowling Green, Kentucky; Miss Catherine McGill, Senior Attendant, Nashville, Tennessee; Miss Evande Priestler, Junior Attendant, Savannah, Georgia.



Knoxville College Football Squad

KNOXVILLE COLLEGE FOOTBALL ROSTER
SCHOOL YEAR 1946-1947



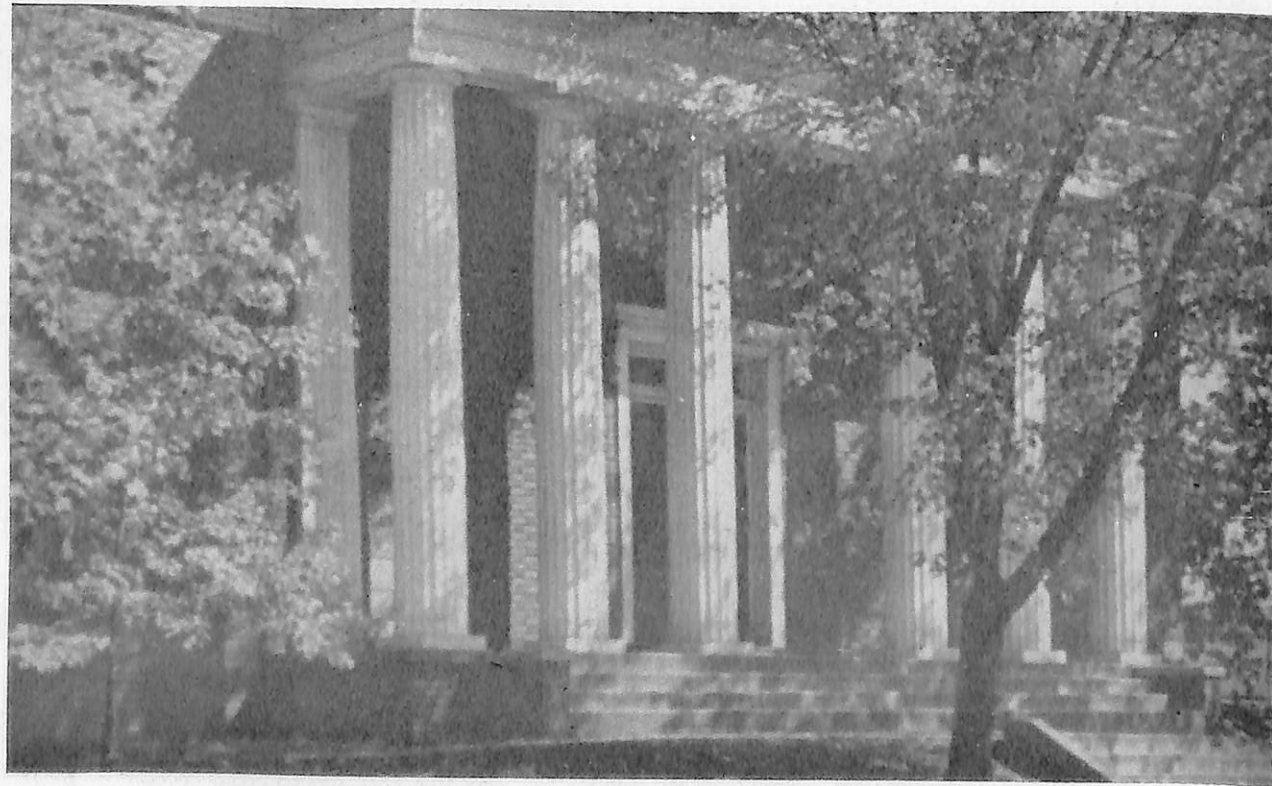
LEON JORDAN
Coach, Knoxville College

| Name | Position | Weight |
|-------------------------|----------|--------|
| 1 Flynt, Frank | FB | 180 |
| 2 Grier, George | HB | 165 |
| 3 Williams, Palmer | LG | 165 |
| 4 Turk, Richard | FB | 175 |
| 5 Freeman, Eldridge | RE | 196 |
| 6 Lenoir, Julian | RG | 175 |
| 7 Kennedy, William | HB | 167 |
| 8 Watson, Archie | C | 174 |
| 9 Henderson, William | QB | 170 |
| 10 Teeter, Clarence | LE | 180 |
| 11 Ramsey, Harold | G | 175 |
| 12 Yette, Robert | HB | 160 |
| 13 Swafford, Joseph | HB | 168 |
| 14 Frye, Russell | RE | 180 |
| 15 Martin, John | LE | 199 |
| 16 Ferris, Roland | T | 213 |
| 17 Taylor, Willie Frank | FB | 197 |
| 18 Knighton, Grady | QB | 158 |
| 19 Means, Aaron | LE | 180 |
| 20 Hill, Arthur | QB | 180 |
| 21 Smartt, Reuben | QB | 175 |
| 22 Jones, Samuel | LE | 178 |
| 23 Whitaker, Wilbert | HB | 170 |
| 24 Divers, William | HB | 170 |
| 25 Lewis, Booker T. | LT | 202 |
| 26 Gillenwaters, Prince | C | 180 |
| 27 Goins, Curtis | RE | 190 |
| 28 Grier, Eugene | FB | 195 |
| 29 Gregory, Clarence | RG | 190 |
| 30 Moulton, John | RT | 207 |
| 31 Adamson, Norvin | C | 185 |
| 32 Williams, Albert | RT | 202 |
| 33 Duncan, James | LT | 275 |
| 34 Redding, Clarence | HB | 160 |
| 37 Mosley, Walter | RG | 190 |
| 38 Pruitt, James | G | 160 |
| 47 Frazer, Lee | G | 155 |
| 48 McDonald, Thomas | HB | 150 |



Library Entrance

KNOXVILLE
COLLEGE



MacMillan Chapel, Knoxville College



KNOXVILLE COLLEGE



*Mac Millan
Memorial Chapel*

THE MAC MILLAN MEMORIAL CHAPEL, KNOXVILLE COLLEGE
PHOTO BY K. C. PHOTO CLUB



*The
Coleridge-Taylor
Chorus*

THE COLERIDGE-TAYLOR CHORUS, KNOXVILLE COLLEGE
PHOTO BY K. C. PHOTO CLUB

Library Building



LIBRARY BUILDING, KNOXVILLE COLLEGE
PHOTO BY K. C. PHOTO CLUB

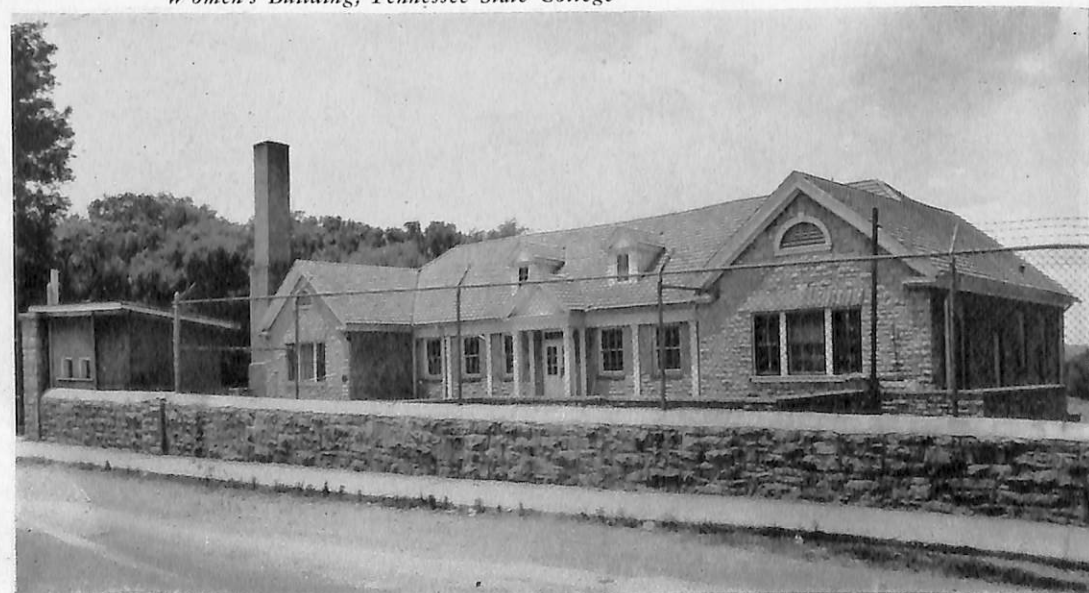
TENNESSEE STATE COLLEGE



Harned Hall, Science Building, Tennessee State College



Women's Building, Tennessee State College



Athletic Field House, Tennessee State College

TENNESSEE STATE COLLEGE



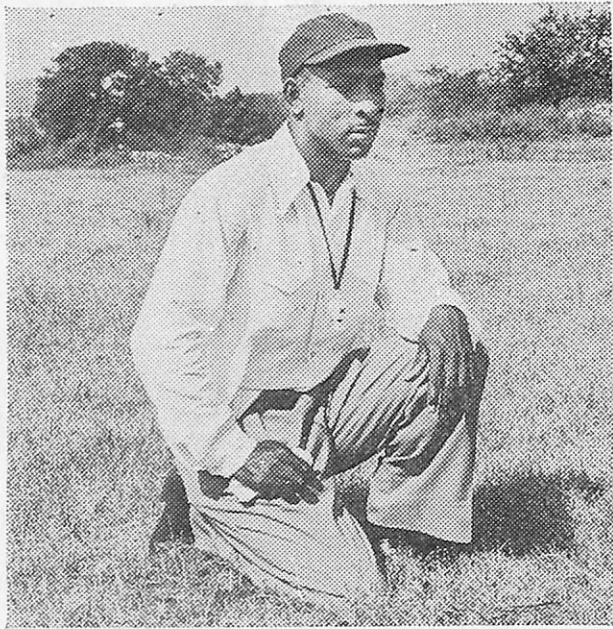
Hale Hall, Dormitory for Women, Tennessee State College



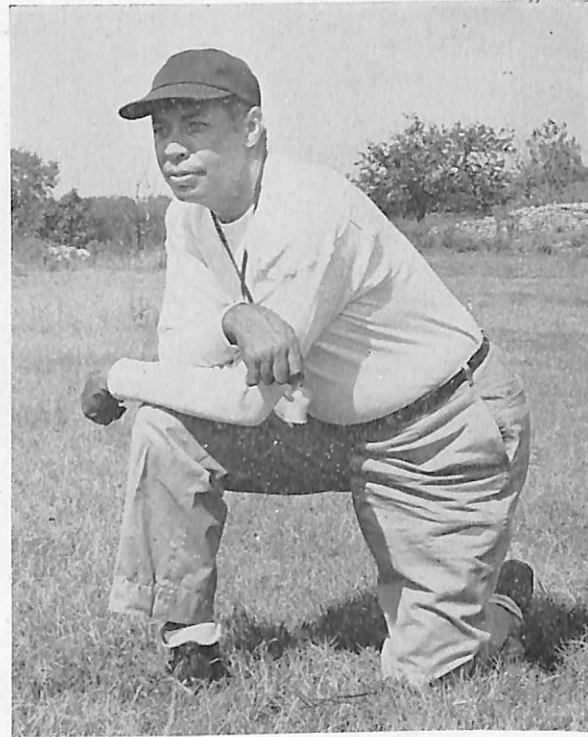
"Goodwill Manor," the President's Home, Tennessee State College



Engineering and Industrial Education Building, Tennessee State College



VERNON E. McCAIN
Assistant Coach



HENRY A. KEAN
Head Coach, Head of Department of
Health and Physical Education, Director
of Athletics

TENNESSEE STATE COLLEGE'S BOARD OF STRATEGY



Left to right: Dr. O. J. Chapman, Director of Athletic Publicity and Business Manager of Athletics; L. Simmons, Assistant Coach; H. A. Kean, Head Coach; V. E. McCain, Assistant Coach; T. A. Harris, Assistant Coach.



Tennessee State College 1946 Football Squad

TENNESSEE STATE FOOT-
BALL ROSTER, SCHOOL
YEAR 1946

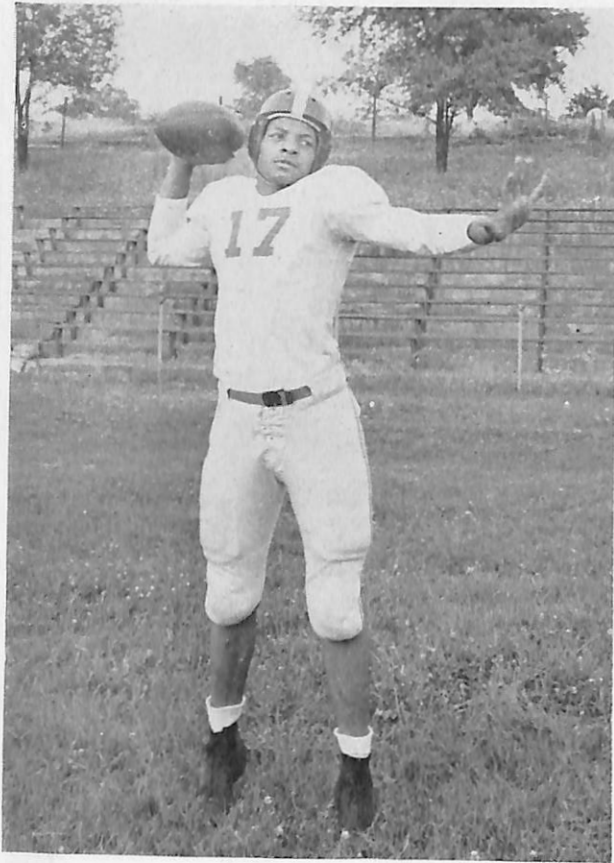


| Name | Position | Weight |
|------------------------|----------|--------|
| 1 Fowlkes, William | HB | 160 |
| 2 Johnson, Turley | G | 178 |
| 3 Marshall, Kendrick | G | 178 |
| 4 Scott, William | E | 170 |
| 5 Sims, Harvey | Q | 155 |
| 6 Rhodes, John | HB | 170 |
| 7 Brown, George | HB | 165 |
| 8 Johnson, Wayman | FB | 160 |
| 9 Williams, Charles | HB | 170 |
| 10 Davis, Gramison | OB | 150 |
| 11 Cummings, Ralph | HB | 185 |
| 12 Whitman, Raymond | HB | 165 |
| 13 Evans, Willis | E | 163 |
| 14 Washington, William | E | 195 |
| 15 Buchanan, Singer | HB | 180 |
| 16 Savage, Willie | HB | 165 |
| 17 Taylor, Nathaniel | QB | 165 |
| 18 White, Willie | HB | 175 |
| 19 Cyrus, Warren | E | 197 |
| 20 Pulley, Ralph | FB | 195 |
| 21 Howard, Walter | T | 193 |
| 22 McCord, Clinton | HB | 168 |
| 23 Bullard, Fred | G | 172 |
| 24 Holbert, Henry | HB | 185 |
| 25 Bolden, John | G | 158 |
| 26 Johnson, William | G | 185 |
| 27 Moutry, Clarence | G | 176 |
| 28 Wynn, Raleigh | T | 215 |
| 29 Price, Robert | T | 216 |
| 30 Dixon, Billy | T | 202 |
| 31 Crum, Paul | FB | 197 |
| 32 Joseph, Jessie | QB | 160 |
| 33 Gilchrist, George | G | 225 |
| 34 Sanders, John | T | 226 |
| 35 Law, Melvin | E | 195 |
| 36 Smith, William | E | 205 |
| 37 McPherson, Charles | C | 168 |
| 38 Nails, Clarence | G | 190 |
| 39 Wynne, Earl | C | 222 |
| 40 Drummond, Robert | T | 205 |
| 41 Jones, Cornelius | HB | 175 |
| 42 Pearson, Roland | HB | 182 |
| 43 Smith, Milton | G | 205 |
| 44 Chiles, James | E | 190 |
| 45 Rickman, Arthur | T | 228 |
| 46 Hamilton, Charles | HB | 177 |
| 47 German, Charles | HB | 185 |
| 48 Turner, George | C | 201 |
| 49 Jackson, Leslie | G | 207 |
| 50 Salter, John | FB | 200 |
| 51 Street, Harold | C | 188 |
| 52 Ralley, Earl | FB | 192 |
| 53 Harris, Leon | G | 170 |
| 54 Merrit, Robert | E | 172 |

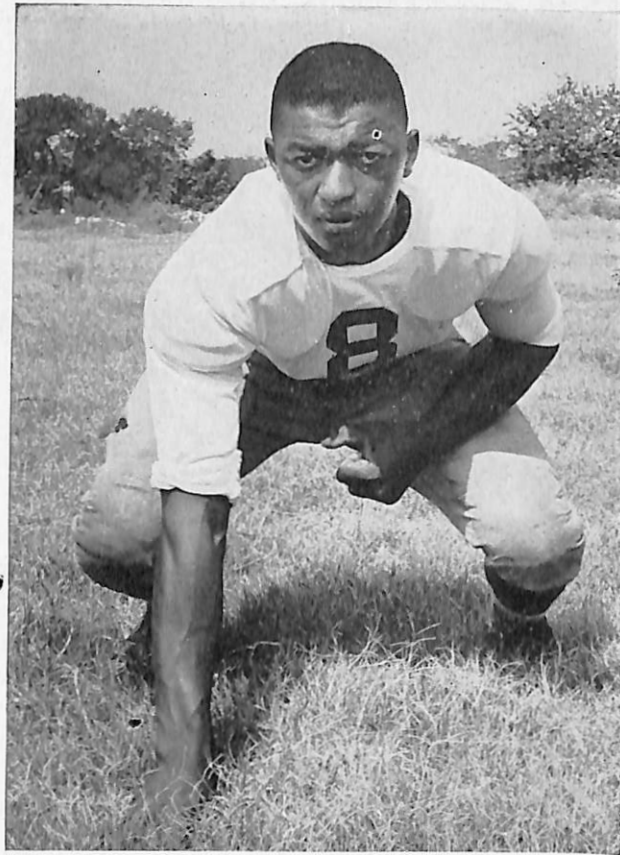


ROBERT "BULLDOG"
DRUMMOND

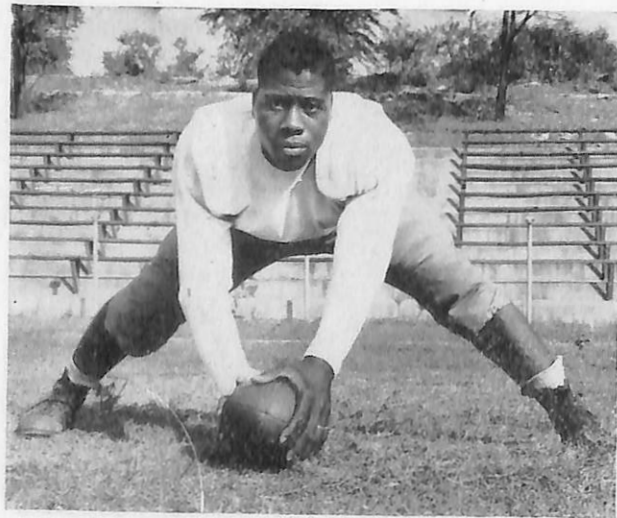
1945 All-American tackle. Drummond weighs 205 pounds, stands six feet two inches, and hails from Birmingham, Alabama. He is a junior in the Department of Health and Physical Education.



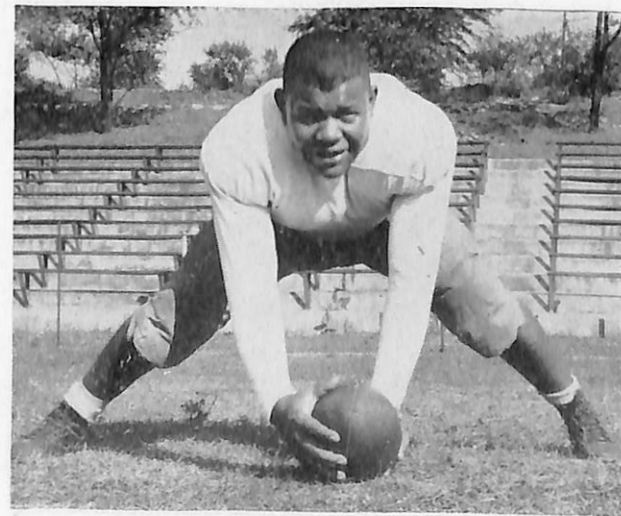
NATHANIEL TAYLOR, *Quarterback*



WILLIAM WASHINGTON, *End*



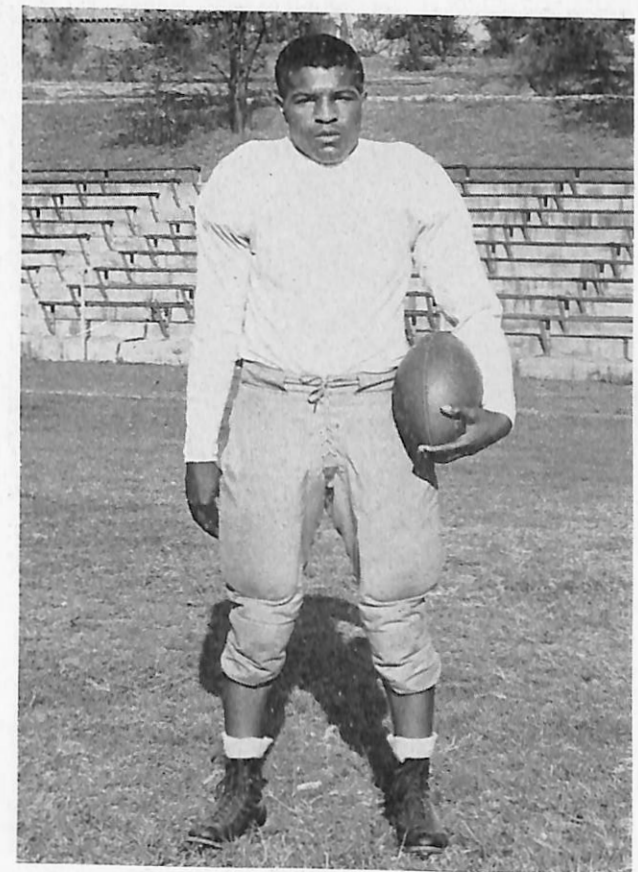
ULYSSES McPHERSON, *Center*



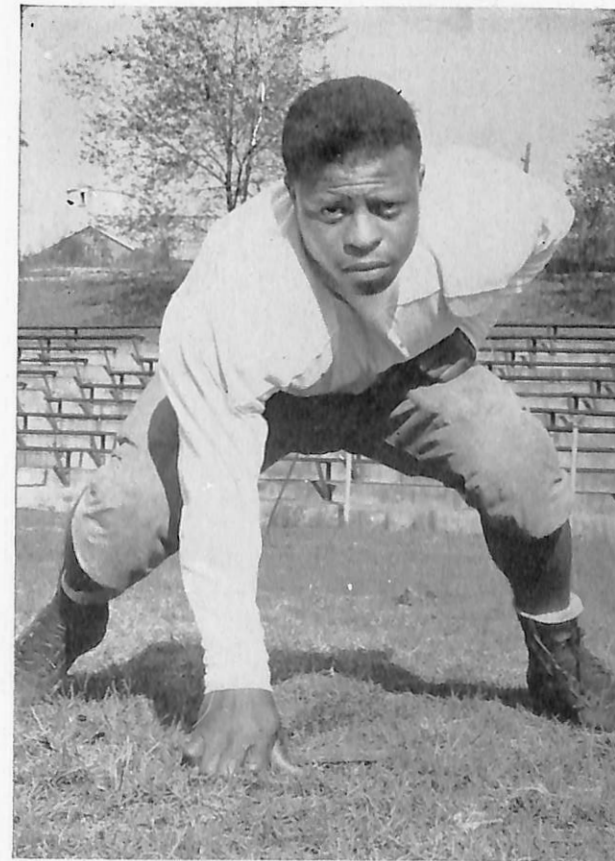
EARL WYNNE, *Center*



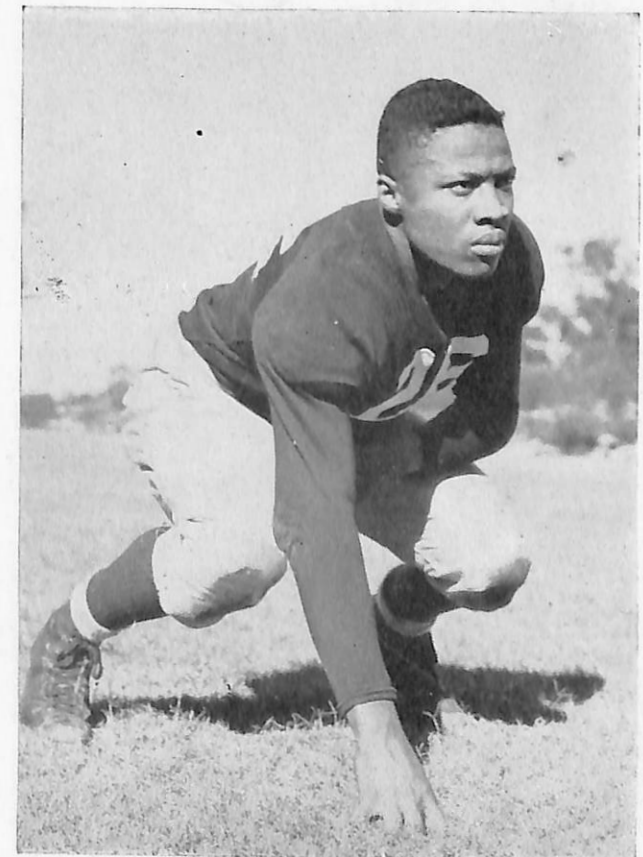
RALPH PULLEY, *Fullback*



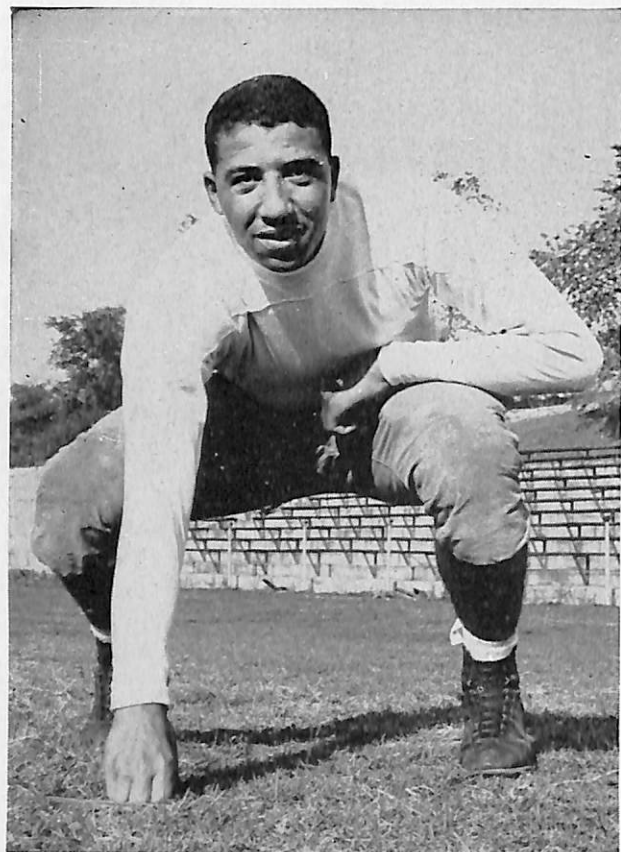
CORNELIUS JONES, *Halfback*



JOHN BOLDEN, *Guard*



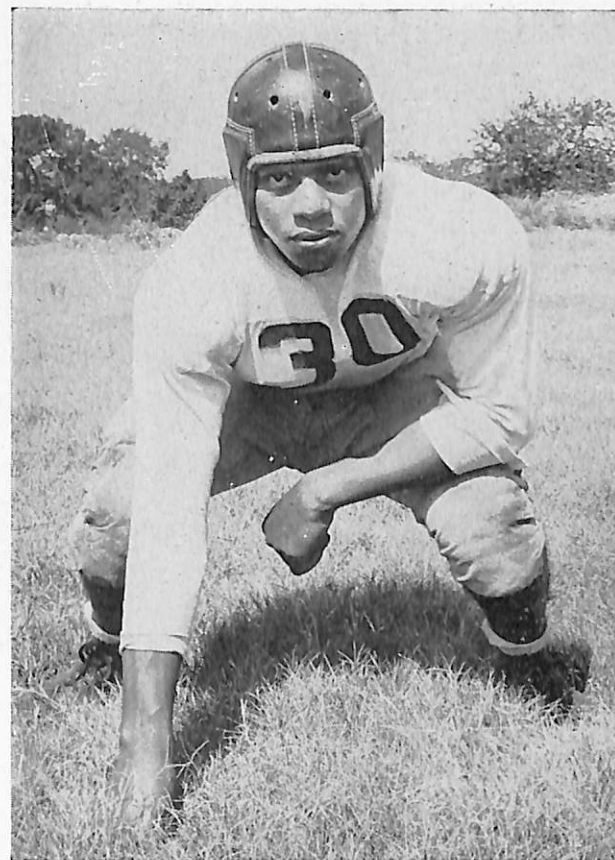
WILLIAM JOHNSON, *Guard*



WILLIAM SMITH, *End*



RAYMOND WHITMAN, *Halfback*



BILLY DIXON, *Tackle*



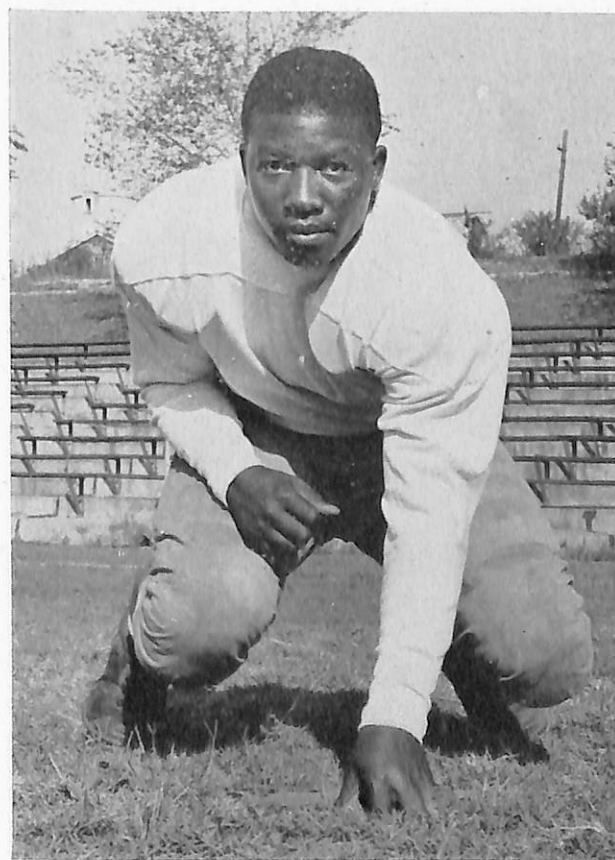
CLARENCE MOUTRY, *Guard*



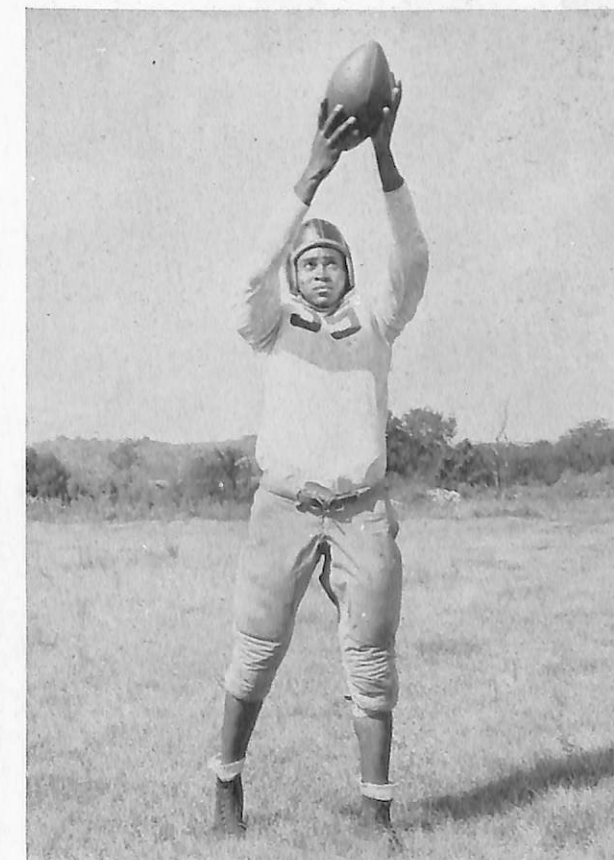
HENRY HOLBERT, *Halfback*



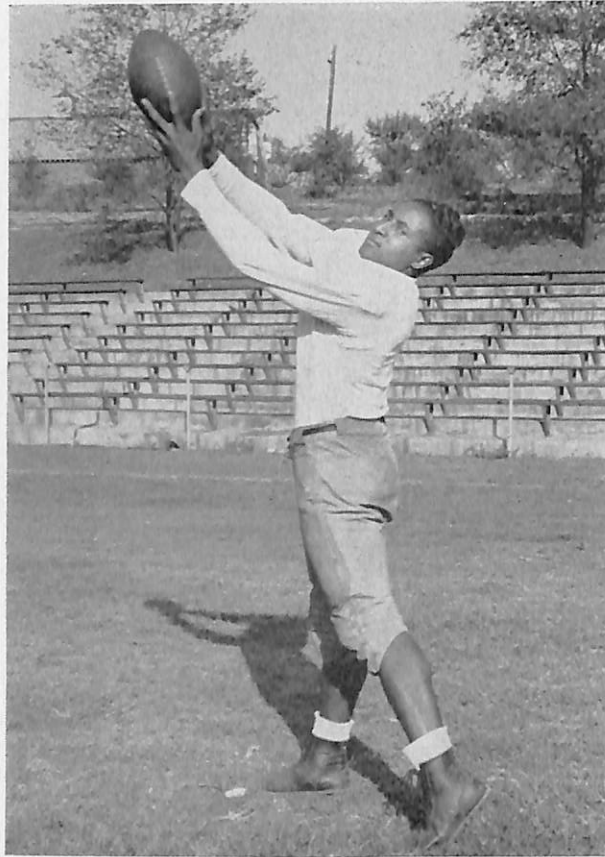
ROBERT DRUMMOND, *Tackle*



FRED BULLARD, *Guard*



MELVIN LAW, *End*



SINGER BUCHANAN, *Halfback*



WARREN CYRUS, *End*



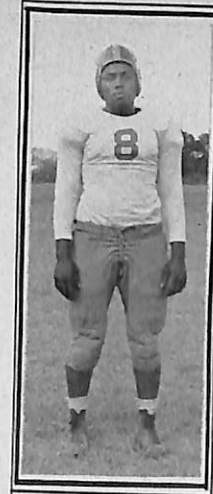
WILLIAM FOWLKES, *Halfback*



RALPH CUMMINGS, *Halfback*



K. MARSHALL
GUARD



T. JOHNSON
GUARD



H. SIMS
QUARTER



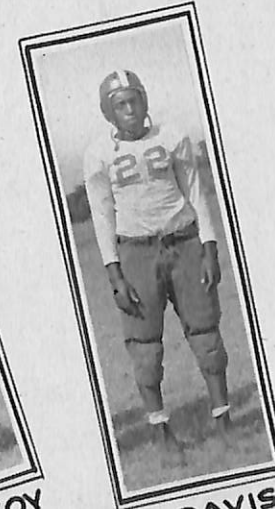
C. MONROE
HALFBACK



C. NAILS
GUARD



C. MCCOY
HALFBACK



G. DAVIS
QUARTER



J. JOSEPH
QUARTER



J. RHODES
QUARTER



P. CRUMB
HALFBACK



W. WHITE
FULLBACK



L. MARSHALL
HALFBACK



J. PEARSON
HALFBACK



L. JACKSON
GUARD



W. SAVAGE
HALFBACK



H. SCOTT
END



C. WILLIAMS
HALFBACK



C. BLYE...
HALFBACK



W. HOWARD
TACKLE



J. SAUNDERS
TACKLE



M. SMITH
TACKLE



R. WYNNE
TACKLE



G. BROWN
HALFBACK



W. EVANS
END



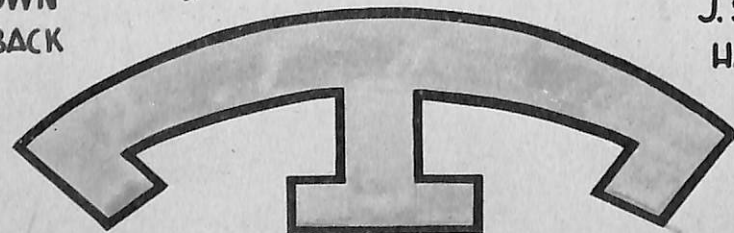
GEO. GILCHRIST
GUARD



W. SCOTT
END



J. SAULTER
HALFBACK



E. RAILY
HALFBACK



G. TURNER



W. STREET



L. HARRIS
TACKLE

CENTERS



Tennessee State College Cheerleaders

1946

FOOTBALL RESULTS

| | | | |
|-------------------------------|----|------------------------------------|----|
| TENNESSEE STATE COLLEGE | 20 | TEXAS COLLEGE | 13 |
| TENNESSEE STATE COLLEGE | 27 | LANGSTON UNIVERSITY | 0 |
| TENNESSEE STATE COLLEGE | 26 | CLARK COLLEGE | 0 |
| TENNESSEE STATE COLLEGE | 25 | WILBERFORCE UNIVERSITY | 7 |
| TENNESSEE STATE COLLEGE | 6 | NORTH CAROLINA STATE COLLEGE | 14 |
| TENNESSEE STATE COLLEGE | 21 | SOUTHERN UNIVERSITY | 20 |
| TENNESSEE STATE COLLEGE | 12 | LINCOLN UNIVERSITY (MO.) | 0 |
| TENNESSEE STATE COLLEGE | ? | KENTUCKY STATE COLLEGE | ? |
| TENNESSEE STATE COLLEGE | ? | KNOXVILLE COLLEGE | ? |

TIME OUT for COKE

STARTING LINE-UP FOR KNOXVILLE COLLEGE

| | | |
|----|-----------------|----------------|
| 22 | S. Jones | Left End |
| 25 | B. Lewis | Left Tackle |
| 6 | J. Lenoir | Left Guard |
| 26 | P. Gillenwaters | Center |
| 29 | C. Gregory | Right Guard |
| 30 | J. Moulton | Right Tackle |
| 14 | R. Frye | Right End |
| 12 | R. Yette | Right Halfback |
| 34 | C. Redding | Left Halfback |
| 17 | W. Taylor | Fullback |
| 21 | R. Smartt | Quarterback |



STARTING LINE-UP FOR TENNESSEE STATE COLLEGE

| | | |
|----|------------|----------------|
| 14 | Washington | Left End |
| 40 | Drummond | Left Tackle |
| 26 | Johnson | Left Guard |
| 37 | McPherson | Center |
| 25 | Bolden | Right Guard |
| 30 | Dixon | Right Tackle |
| 21 | or Howard | Right Tackle |
| 19 | Cyrus | Right End |
| 24 | Holbert | Right Halfback |
| 12 | Whitman | Left Halfback |
| 20 | Pulley | Fullback |
| 17 | Taylor | Quarterback |

OFFICIALS

| | |
|--------------|------------------|
| Referee | JOHNSON, Fisk |
| Umpire | MAXWELL, Meharry |
| Headlinesman | BEASLEY, Fisk |
| Field Judge | HARRISON, Fisk |

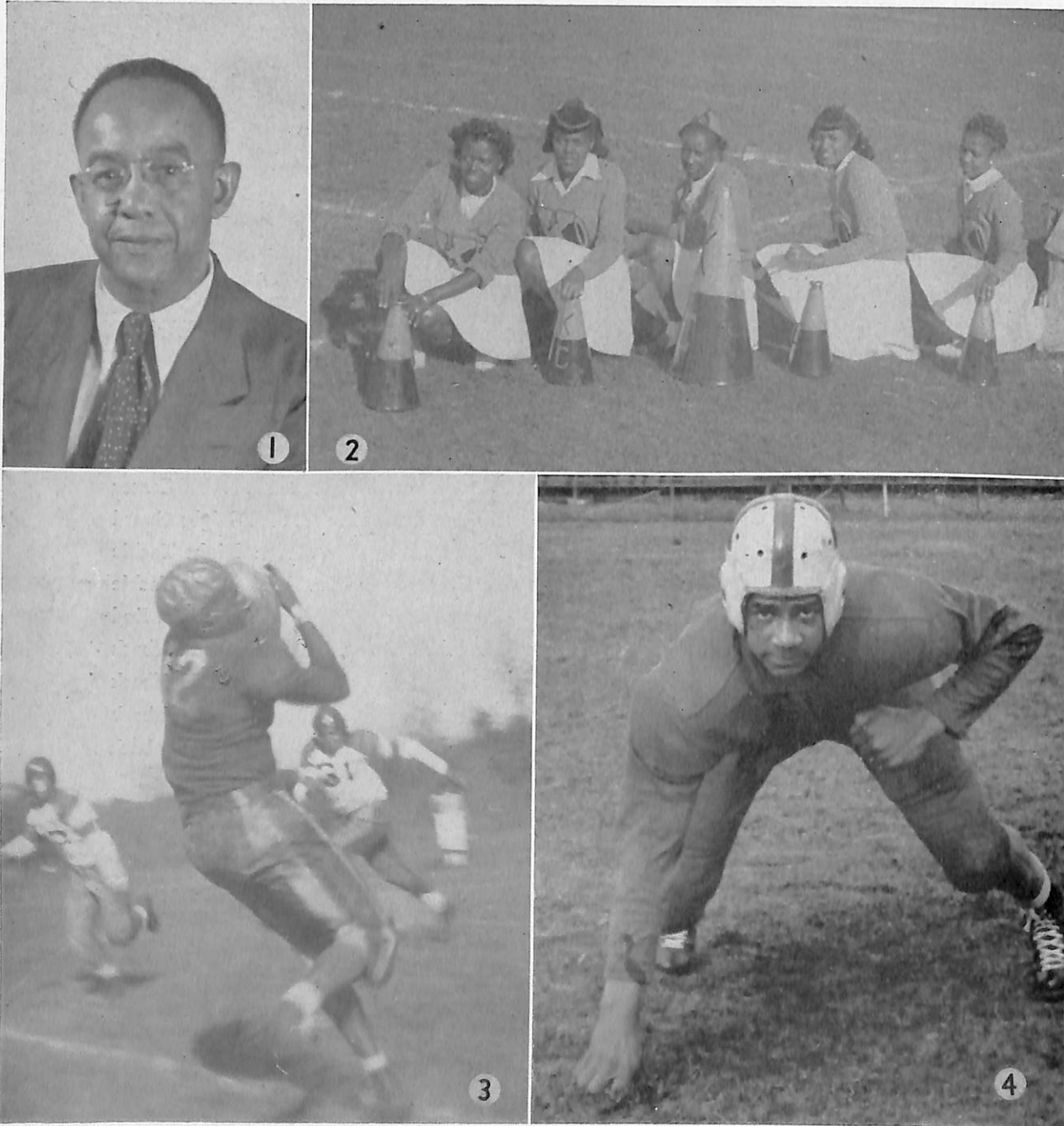
| SCORE | 1 | 2 | 3 | 4 | TOTAL |
|-------|---|---|---|---|-------|
| | | | | | |
| | | | | | |

Coke=Coca-Cola

"Coca-Cola", and its abbreviation "Coke" are the registered trade-marks which distinguish the product of The Coca-Cola Company.



KNOXVILLE COLLEGE



1. J. H. Hilyard, Director of Athletics, Knoxville College; 2. Knoxville College cheerleaders, left to right: Mildred Kelly, Rubye Houston, Flora Fletcher, Esther Hicks, Mayola Keith; 3. Robert Yette, Knoxville College quarterback (in foreground); 4. Samuel A. Jones, captain, left end, Knoxville College.

THE STUDENT COUNCIL OF TENNESSEE AGRICULTURAL AND INDUSTRIAL STATE COLLEGE FOR THE SCHOOL YEAR 1946-1947



Reading from left to right: R. Eugene Pincham, Athens, Alabama, Senior Representative, Treasurer; Vernoll Coleman, Brownsville, Tennessee, Sophomore Representative; Jessie Norman, Murfreesboro, Tennessee, Junior Representative; Erma Glasco, Little Rock, Arkansas, Sophomore Representative, Assistant Secretary; Granville M. Sawyer, Austin, Texas, Senior Representative, Public Relations Officer; Charles J. Smith, III., Hampton Institute, Hampton, Virginia, Senior Representative, President; Mary E. Cosby, Nashville, Tennessee, Senior Representative, Secretary; James Jones, Birmingham, Alabama, Junior Representative, Vice-President; Dr. Virginia S. Nyabongo, Adviser; Alvin J. McNeil, Jackson, Mississippi, Senior Representative.

Representatives not in photograph: John Cannon, Minneapolis, Minnesota, Graduate Representative; Omar Robinson, Memphis, Tennessee, Freshman Representative.

PURPOSE OF THE STUDENT COUNCIL

- I. To promote the general welfare of the college.
- II. To protect the general welfare of the college.
- III. To provide active participation in student affairs.
- IV. To create an intermediary between faculty and students in matters of general welfare.

THE STUDENT COUNCIL'S APPEAL TO THE STUDENT BODY

"Remember, your Council is only as strong as the people whom it represents."

Greetings from

THE COLLEGE HOME ECONOMICS CLUB

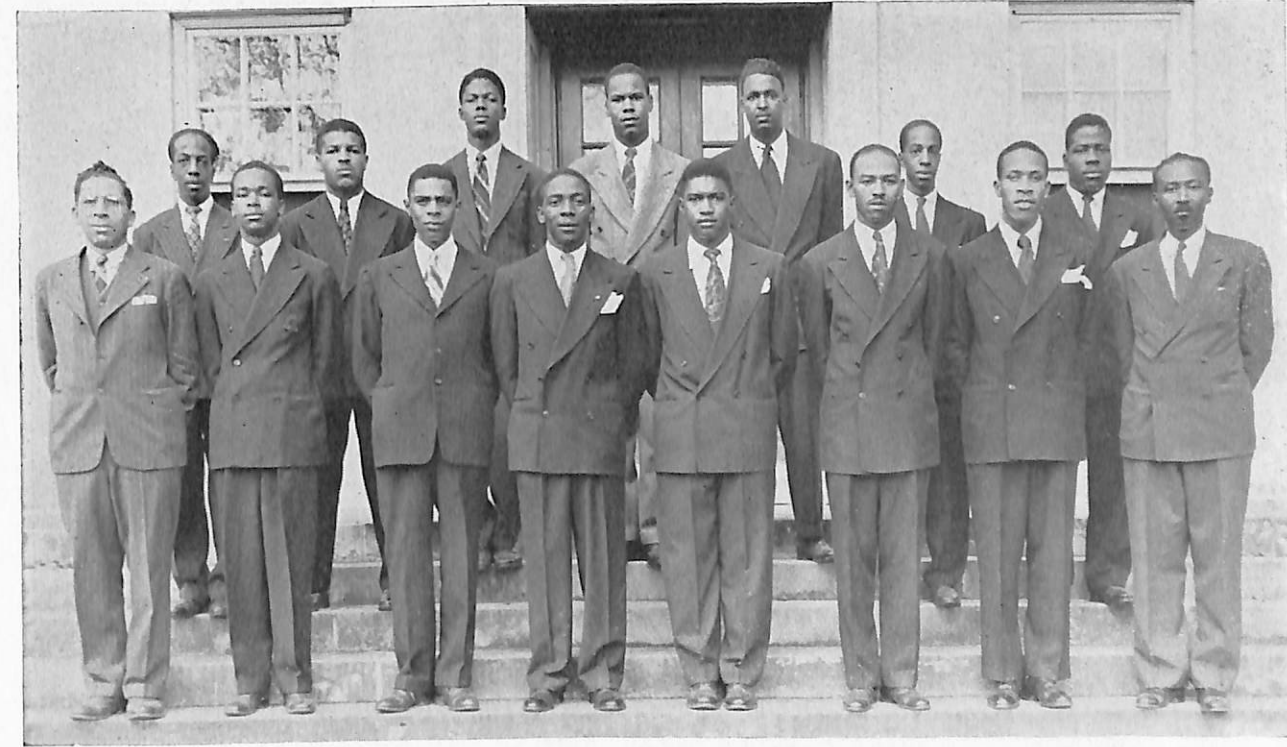


OFFICERS

| | | | |
|-----------------------|---------------------|----------------------|------------|
| JUANITA RYAN | President | PAULETTE COOK | Treasurer |
| ALMA HARMON | Vice-President | ONETHA BATES | Reporter |
| MILDRED STEWARD | Secretary | SARA E. PAYNE | Adviser |
| MINERVA NORMENT | Assistant Secretary | MATTYE FLOWERS | Co-Adviser |
| JUANITA REED | Co-Adviser | | |

With Compliments and Greetings from

ZETA ALPHA CHAPTER of PHI BETA SIGMA FRATERNITY, INC.



Front row, left to right: Dr. M. F. Spaulding, Curtis Moman, James Williamson, Alvin J. McNeil, Ernest Franklin, Raymond Taylor, John W. Stephens, Dr. Earl L. Sasser. Second row: Jesse Roberson, Cornelius Jones, Jerone Auls, William Griffin, William Hawes, Lewis Roberson, Ulysses McPherson. Brothers not in picture are: Donald Bentley, John W. Bolden, Abner Deberry, Alan Lott, Seth Mitchell, James W. Walker, Dewey Watkins.

OFFICERS OF ZETA ALPHA CHAPTER

| | | | |
|-------------------------|----------------|----------------------|--------------------------------|
| ALVIN J. McNEIL | President | CURTIS MOMAN | Dean of Pledges |
| Jackson, Mississippi | | Chicago, Illinois | |
| ULYSSES McPHERSON | Vice-President | JESSE ROBERSON | Chaplain |
| Louisville, Kentucky | | Nashville, Tennessee | |
| RAYMOND TAYLOR | Secretary | JERONE AULS | Treasurer and Business Manager |
| Chattanooga, Tennessee | | Knoxville, Tennessee | |

ROSTER OF MEMBERS

| | | | |
|-----------------------|----------------------|------------------------|----------------------|
| DONALD BENTLEY | Nashville, Tennessee | ALAN LOTT | Douglas, Georgia |
| JOHN W. BOLDEN | Louisville, Kentucky | SETH MITCHELL | Nashville, Tennessee |
| ABNER DeBERRY | Jackson, Tennessee | JESSE ROBERSON | Nashville, Tennessee |
| ERNEST FRANKLIN | Jackson, Mississippi | JOHN W. STEPHENS | St. Louis, Missouri |
| WILLIAM GRIFFIN | Birmingham, Alabama | JAMES W. WALKER | Nashville, Tennessee |
| WILLIAM HAWES | Birmingham, Alabama | DEWEY WATKINS | Jackson, Tennessee |
| CORNELIUS JONES | Harlan, Kentucky | JAMES WILLIAMSON | Ripley, Tennessee |

ADVISORY STAFF

| | |
|---------------------------|---------------------------|
| PROFESSOR A. V. BOSWELL | PROFESSOR HENRY L. TAYLOR |
| DR. S. H. FREEMAN | DR. EARL L. SASSER |
| MR. ROBERT GAINES | DR. D. H. TURPIN |
| DR. M. F. SPAULDING | MR. CHANEY UMPHREY |
| PROFESSOR PRESTON STEWART | |

Greetings
from

LAMBDA ETA SIGMA NATIONAL LITERARY HONOR SOCIETY



MISS CALLIE LENTZ, *President*
MRS. P. W. GORE, *Adviser*
MRS. DOROTHY JONES, *Co-Adviser*

Greetings from

ALPHA BETA CHAPTER SIGMA GAMMA RHO SORORITY

OFFICERS

| | |
|--------------------------|-----------------|
| JEANETTA YOUNG | Basileus |
| CELIA WATKINS | Grammateus |
| LEAH STOCKARD WOOD | Anti-Grammateus |
| REBECCA ROBERTS | Epistoleus |
| FRANCES PRICE | Tamiocheus |

AURORA CLUB

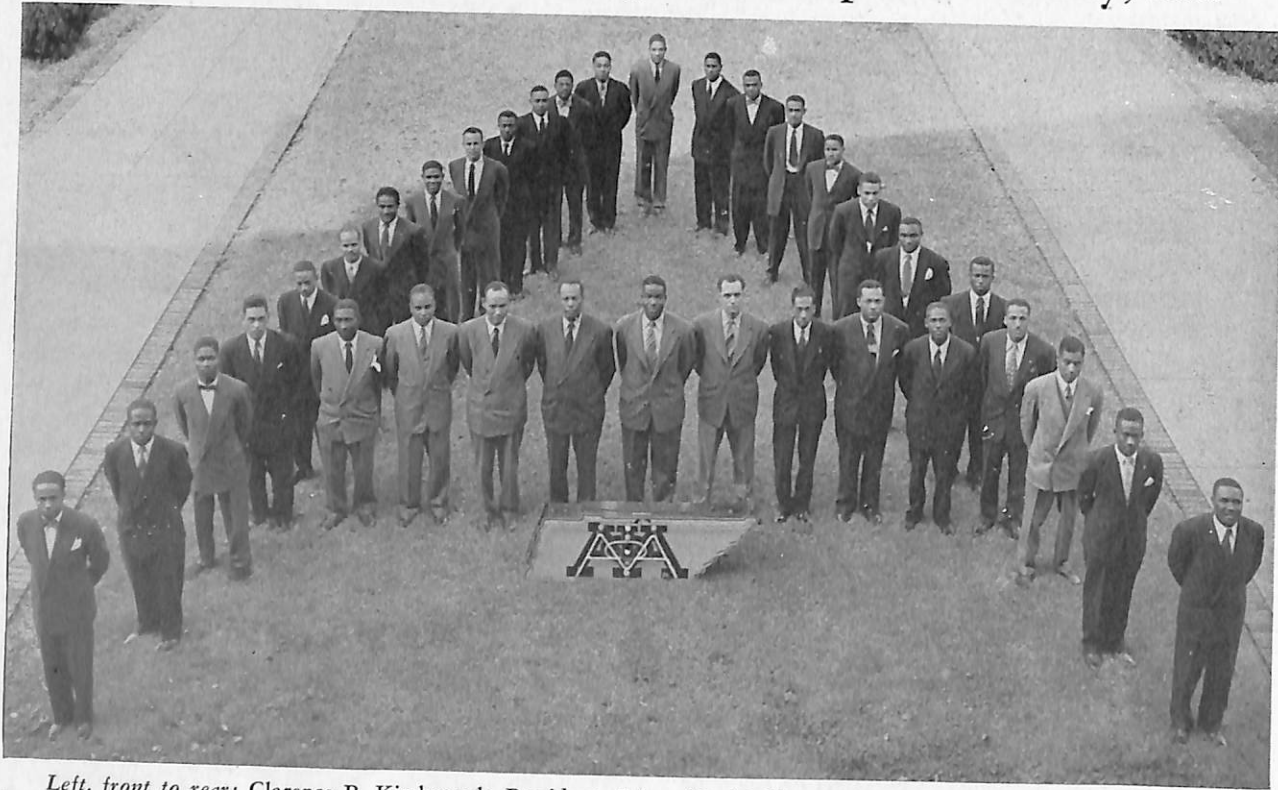
| | |
|----------------------------|-----------|
| MARY JONES | President |
| AUDREA M. MARTIN | Secretary |
| WILHELMENIA E. OWENS | Treasurer |
| MRS. MARTHA M. BROWN | Adviser |
| MRS. H. G. WILHOITE | Adviser |

SLOGAN

"Greater Service—Greater Progress"

Greetings

Beta Omicron Chapter of Alpha Phi Alpha Fraternity, Inc.



Left, front to rear: Clarence B. Kimbrough, President; Edward L. Mullins, Carlos C. Bruce, Ferdinand J. Holmes, Ira D. Pearson, Julius McMillan, Singer Buchanan, Gilbert R. Mason, Secretary; Samuel R. Whitman, Joseph Thomas, Corresponding Secretary; Cleveland C. Fisher, Roy Overton, Jr., George Braathett, James Jackson. Right, front to rear: Julius Higgins, Eugene Washington, Associate Editor of Sphinx; Warren Dean, Edward Reed, Harvey Sims, Henry Holbert, John A. McLean, Vice-President; Marion H. Arnold, Jack L. Feagins, Treasurer; Finley D. Jordan, Warren Cyrus. Center, left to right, faculty advisers: Vernon E. McCain, Lewis R. Holland, Raleigh A. Wilson, Henry A. Kean, Clinton D. Crooks, Frederick J. D. McKinney, George W. Gore, Jr., Robert Jordan, H. C. Jones. Members not in picture: John H. Jordan, Adviser to Sphinx Club; Thurman Northcross, William Polk. Faculty Advisers not in picture: Myron B. Towns.

SPHINX CLUB

Beta Omicron Chapter of Alpha Phi Alpha Fraternity, Inc.



Left to right: Talmadge Mitchell, Calvin Haliburton, Fred Goodwin, Chaplain; Lemuel Hutch, Earl Lucas, W. D. Goosby, Scott Saunders, Ralph Mullins, Secretary; William P. Smith, President; Wayman Johnson, John Armistead, William Turner, John Singleton, William Burnett, Jonas Richmond.



MR. BENTON A. ADAMS
Technical Director



DR. THOMAS E. POAG
Executive Director



ABOVE - THE CAST FOR "DOUBLE DOOR" BY ELIZABETH M'FADDEN
CENTER - A SCENE FROM "BEYOND THE HORIZON" BY EUGENE O'NEILL
BELOW - A SCENE FROM "THE SILVER CORD" BY SIDNEY HOWARD



Compliments of

ALPHA CHI CHAPTER

and

PYRAMID CLUB

of

DELTA SIGMA THETA SORORITY

STUDENT CHRISTIAN ASSOCIATION

Welcomes

ALUMNI AND VISITORS

OFFICERS

| | |
|-------------------------|---------------------|
| SPENCER DAVIS | <i>Chairman</i> |
| JEANNINE ALLISON | <i>Co-Chairman</i> |
| THELMA BAKER | <i>Secretary</i> |
| LOVE BRADSHAW | <i>Co-Secretary</i> |
| CASS F. L. TEAGUE | <i>Treasurer</i> |

FACULTY ADVISERS

MRS. L. B. WATSON

MR. R. L. JORDAN

Greetings from

THE ARCHRONIAN PLEDGE CLUB

of

ZETA PHI BETA SORORITY

OFFICERS

| | |
|------------------------|----------------------------|
| WILMA CLARK | <i>President</i> |
| DORIS SIMMONS | <i>Vice-President</i> |
| MAGNOLIA MURRAY | <i>Secretary</i> |
| HELEN WASHINGTON | <i>Assistant Secretary</i> |
| THELMA FOYE | <i>Treasurer</i> |
| GRACE FIELDS | <i>Reporter</i> |

MEMBERS

Earlene Haliburton
Grace Fields
Thelma Foye

Wilma Clark
Doris Simmons
Evelyn Newton

Helen Washington
Ethel Wilson

"Let Every Day Be a Thanksgiving Day"

Greetings from

ALPHA CHAPTER OF TENNESSEE
GAMMA IOTA ALPHA
(VETERANS' CLUB)

OFFICERS

| | |
|------------------------------|--------------------------------|
| ALVIN J. McNEIL | <i>President</i> |
| ELZE BOGAN | <i>Vice-President</i> |
| GLENN ATKINS | <i>Executive Secretary</i> |
| BENNIE HILLARD | <i>Corresponding Secretary</i> |
| JAMES R. THORNTON | <i>Treasurer</i> |
| FRED L. GOODWIN | <i>Chaplain</i> |
| WILFING WILSON | <i>Sergeant at Arms</i> |
| MRS. RACHEL J. PATILLO | <i>Educational Adviser</i> |

Make 'em think the atomic bomb's got 'em,
TIGERS

Welcome

ALUMNI AND FRIENDS

THE SUNDAY SCHOOL

MR. R. E. CLAY, *Director*
MR. ERNEST L. MCKINNEY, *Superintendent*

Tennessee State College Theatre

Welcomes

ALUMNI AND VISITORS



Officers of the Tennessee State Players Guild

ROBERT WHYTE *President*
 SINGER BUCHANAN *Vice-President*
 DORIS DOBBS *Secretary*
 ODESSA PERRY *Assistant Secretary*
 EDNA DOZIER *Treasurer*
 LEROY ROGERS *Chaplain*
 GRANVILLE SAWYER *Business Manager*
 IRA D. PEARSON *Publicity Manager*
 RUTH A. SHARP
 *Chairman, Membership Committee*
 JIMMY MANN
 *Chairman, Program Committee*
 BLOOMIE GORE *Chairman, Social Committee*

Officers of the Children's Theatre

WILLIAM V. HARPER *President*
 BETTY STEWART *Vice-President*
 DORIS HILL *Secretary*
 MELSHIA BENT *Assistant Secretary*
 VERNETTA McCAIN *Treasurer*
 PRESTON STEWART *Business Manager*
 EARL SASSER *Publicity Agent*
 BARBARA WILHOITE *Wardrobe Mistress*
 PATRICIA BENT *Make-up Mistress*
 ROSARY HARPER *Property Manager*
 HUBERT CROUCH *Electrician*

DR. THOMAS E. POAG *Director*
 MR. BENTON ADAMS *Technical Director*
 MISS BLANCHE SANDERS
 *Director of Laboratory Theatre*
 MRS. DOROTHY JONES
 *Supervisor of Costumes and Make-up*
 MRS. M. D. JORDAN
 *Director of Children's Theatre*
 MRS. ALMA D. JONES
 *Director of Choral Speaking Choir*



Scene from "OUTWARD BOUND," three act drama by Sutton Vane. Cast, reading from left to right: Granville M. Sawyer, Robert Whyte; seated, Laurette Cantrell; standing, Amelia Dorse, Wilfred Exum, Hugh Blackwell; seated, Lucille Smith.

HOLLYWOOD STAR VISITS A. AND I. STATE COLLEGE



Reading from left to right, seated: Mrs. Walter S. Davis, Mr. Clarence Muse, Little Ivan Davis, President Walter S. Davis, and Hattie McDaniel. Standing, reading from left to right: Mr. Benton Adams, Mrs. Herman Davis, Dr. and Mrs. R. B. Jackson, Dr. and Mrs. Thomas E. Poag, Professor Walter A. Flowers, and Mrs. Marie Brooks Strange.

"Let Every Day Be a Thanksgiving Day"
 Welcome
 ALUMNI AND VISITORS
 Compliments
 SCROLLERS CLUB
 of
 ALPHA THETA CHAPTER
 KAPPA ALPHA PSI
 FRATERNITY

OFFICERS
 ESTILL COVINGTON President
 TILLMAN PAYNE Vice-President
 ALGIE OLDHAM Secretary
 GEORGE PENN Assistant Secretary
 OSCAR SMITH Secretary-Treasurer
 THOMAS SWIFT Treasurer
 CASS F. L. TEAGUE Sergeant at Arms

MEMBERS
 Samuel Andrews
 Walter Eppse
 Curtis Kage
 Joshua Grider
 Arthur Gilbert
 Willie McMurry
 Gerald Prater
 Moses Woods
 Maurice Nash
 Jake Balton
 Jerry Batey
 Melvin Law
 John Haynes
 Willie Hankerson
 William Hogg
 Carl Helem
 Jessie Horne
 Hughland Heard
 Clarence Crutchfield
 Henry Coneway
 Miller Mosley
 Frank Lewis
 William Jackson
 Robert Jones
 Gus Rutledge
 Ordell Yarborough

Greetings from
 LOS BUENOS VECINOS
 THE SPANISH CLUB

MRS. H. R. BLACK Adviser
 OFFICERS — 1946-1947
 HELEN DUMAS President
 MARION WRIGHT Vice-President
 LORA PARKER Secretary
 COLEEN MOORE Assistant Secretary
 ROSA PARKER Treasurer
 FRANCES DEVORE Reporter
 JACQUELINE BAKER Program Chairman

Members includes all the Spanish classes. Those contributing to this ad are:

| | |
|------------------|--------------------|
| Paul Allen | Mary Lindsley |
| Joseph Bates | Vera McNeal |
| Carolyn Blanton | D. Overton |
| Gertrude Callier | Anderson Petty |
| Selena Davis | Charles Simmons |
| Clara Edwards | Beatrice Smith |
| Talmadge Harris | Benjamin Winters |
| Katie Knight | Cordell Williamson |
| Charles Kennedy | Sadie Whitlow |
| Genetta Leftrict | Floyd Jones |
| Willie May Owens | Jesse Fair |
| James Thompson | Betty Coley |
| Lillie Killum | |

THE FOOTBALL GAME

By EUGENE W. WASHINGTON

It's time for the kickoff, in a game that's fair;
 We are watching the ball as it sails through the air;
 It falls in the hands of a big fullback
 Who follows the boys who open the track.

They go blocking and dodging right down the field;
 The opponents start falling and begin to yield.
 But here comes a tackler that's full of game;
 He makes that fullback fall quite tame.

Away to the huddle with a turn of the heel,
 Then come out to fight with nerves of steel.
 Charge! Charge! with all your might;
 Hold that line from left to right.

But alas, there is another down;
 The coach on the sideline begins to frown;
 There goes a pass that a back has tossed;
 That end speeds up and the goal is crossed.

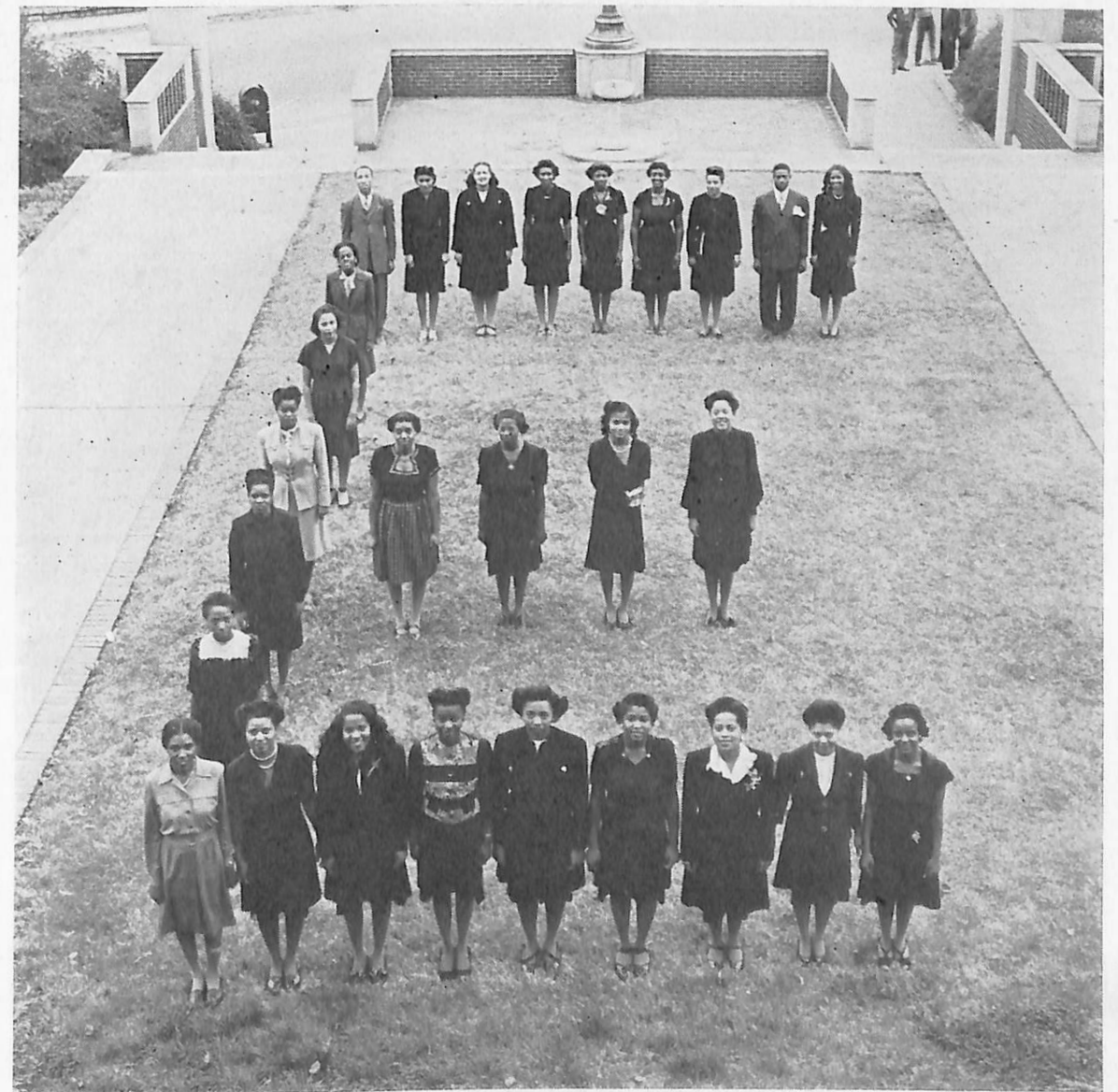
A touchdown! the crowd goes quite wild;
 Now for the extra point which is made quite mild.
 Here comes the opponent that tries the same,
 But is cut down too quick to gain any fame.

Five minutes to play with a zero score;
 They come from the huddle to try it once more,
 But again they fail; the score remains the same.
 This brings us to the end of our football game.

WELCOME!

ELEMENTARY EDUCATION GRADUATES

OFFICERS OF THE ELEMENTARY EDUCATION CLUB AND STUDENT
 TEACHERS, TENNESSEE A. AND I. STATE COLLEGE



Beginning at the front and going clockwise are: Laura Frazier, Bloomie Gore, Vice-President; Marion Knox, Secretary; Ernestine Lindsey, Geraldine Ferguson, Vesta Barnett, Chairman Finance Committee; Dorothy Fludd, Chairman Lookout Committee; Mae Etta McCain, Treasurer; Lucy Mays, Leona Earley, Dorothy Butts, Ethelyne Ferrell, Beatrice Mayberry, Jeanetta Young, Walter Hill, Chairman Steering Committee; Martha Green, Sarah Jordan, Katherine Smith, Thelma Hawkins, Johnnie Mae Mumphrey, Beulah M. Wilson, Reporter; Elza Bogan, President; Elia Mae Blake, Assistant Secretary. Center: Lucy Jenkins, Janie Wilson, Frances Campbell, Etta Mae Griffin, Pianist. Mrs. F. A. Sanders, Adviser, not in the picture.



ALPHA PSI CHAPTER

Alpha Kappa Alpha Sorority

S
O
R
O
R
S



W E L C O M E S Y O U



I
V
I
E
S



Rho Psi Chapter OMEGA PSI PHI FRATERNITY, INCORPORATED

WELCOMES ALUMNI and FRIENDS

TENNESSEE STATE COLLEGE "FLYING TIGERS," DROP YOUR "ATOM BOMB" ON
THOSE KNOXVILLE COLLEGE "BULLDOGS"


OFFICERS

| | | | |
|----------------------------|-----------------------|-------------------------|---------------------------|
| CHARLES J. SMITH, III..... | <i>Basileus</i> | JAMES HERNDON..... | K. R. S. |
| H. JARVIS GILMORE..... | <i>Vice-Basileus</i> | DAVID ULMER..... | <i>Assistant K. R. S.</i> |
| GEORGE LESLIE STONE..... | <i>K. F.</i> | KNOX TUCKER..... | <i>Neophyte Committee</i> |
| ENOCH T. WILLIAMS..... | <i>Chapter Editor</i> | ERNEST L. MCKINNEY..... | <i>Chaplain</i> |

ADVISERS

| | | |
|----------------|------------------|-------------------|
| Dr. T. E. Poag | Mr. W. V. Harper | Dr. O. J. Chapman |
|----------------|------------------|-------------------|

MEMBERS

| | | | | |
|---|------------------|--------------------|------------------|--------------------|
|  | Walter W. Gibson | Luttrell Slaughter | John Cashum | Louis Sing |
| | Coleridge Brewer | Alfred Sharpe | Roscoe Koontz | Jerry Hughes |
| | James Jones | Oliver Johnson | Charles Dismukes | Frank Motley |
| | Robert Boyd | Thomas Mayfield | James E. Swaze | Wayne Reeves |
| | Isaac Watson | John M. Williams | J. Claude Oliver | Edward Johnson |
| | Frank Thomas | William Moore | Marion Smithson | William McAllister |
| | Clarence Austin | Cabot Smith | Maxwell Mack | |



A DOUBLE QUINTET OF ZETA CHARM



Reading from left to right: Misses Amelia Dorse, Cary Blackwell, Vera Fowler, Hazel Blaine, Loucinda McMahan, Laura Teasley, Wilma Liggett, Ella Edith Holmes, Doris Kimble, and Rosa Evans, center.

NINE ASPIRANTS TO ZETA



Reading from left to right, front: Wilma Clark, Helen Washington, Thelma Foye, Major Skeens. Back: Helen Haliburton, Magnolia Murray, Evelyn Newton, Evelyn Wilson, Grace Fields.

THE ALPHA THETA CHAPTER of KAPPA ALPHA PSI FRATERNITY, INC.

Welcomes Alumni and Guests



ROSTER

| | | | |
|-----------------------|---------------------|------------------------|----------------------|
| R. EUGENE PINCHAM | Polemarch | ANDREW BOND | Lieutenant-Strategus |
| KENNETH L. McVOY | Vice-Polemarch | HAROLD SMITH, JR. | Historian |
| WILLIAM S. EADDY, JR. | Keeper of Records | BENJAMIN M. BATTS, JR. | Journalist |
| SAMUEL H. GREGORY | Keeper of Exchequer | SPENCER DAVIS | Chaplain |
| RALPH J. PULLEY | Strategus | HOMER R. WHEATON | Dean of Pledges |

Vincent Bunch
John Clay
Arthur Davis
John Gregory
Edward Hayes
David Jordan

Willard Jordan
William A. Leavelle
Wesley Logan
Wardell Newman
W. Hugh Pincham
Charles Ratliff
Smith Rogers, Jr.

Melvin Smith
Leo Whaley
Isaac White
Sidney White
Robert Whyte
Nathaniel Taylor



DAVID KING CHERRY
Dean, Knoxville College

ROLE OF THE LIBERAL ARTS COLLEGE

In the life and development of this country, it is not too much to say that the liberal arts college has played a most constructive role. Probably no one has ever claimed that this type of education is the only road or the surest road to success. Hardly any will deny, however, that by and large, it has been a vital factor in many cases.

Knoxville College has emphasized the liberal arts program from the very beginning of her existence. We believe that this type of education fills a genuine human need, else it could not have stood the test of time as it has over the years. We believe that in the future, as in the past, there will be abundant need for what this type of education represents, as a means of life preparation.

D. K. CHERRY, *Dean*
Knoxville College

BUSINESS INSTITUTE PROGRAMME

Thanksgiving Morning at 10:00 A.M. in Auditorium

General Directors..... Dr. W. S. Davis and Mr. R. E. Clay
 Music by the College Band in front of Administration Building at 9:30 A.M.
 President Davis Presiding—
 Music College Choir
 Invocation
 Music College Choir
 Address..... Dr. D. A. Jackson of Knoxville
 Five-Minute Report by Regional Directors
 Music College Choir
 Address..... Mr. A. J. Gaston of Birmingham
 Appointment of Regional Directors..... Dr. W. S. Davis
 Benediction



CARLOS BRUCE
*Artistic painter stands beside the
 Home-coming sign which he
 constructed*

CRESCENT CLUB

of

**PHI BETA SIGMA
FRATERNITY, INC.**

OFFICERS

NEWTON McCRAVY, JR. *President*
EARL WELLS *Vice-President*
PHILLIP REED, JR. *Secretary*
VERNON BARON
..... *Assistant Secretary and Treasurer*
DAVID GARDNER *Sergeant at Arms*
EDGAR TAYLOR *Chaplain*
CHARLEY BROOKS. *Assistant Dean of Pledges*

R O S T E R

William Edwards Leroy Gardner
Woolfong Wilson William Callian
John Yarbrough Leslie Bowman
Percy Hall Robert Anderson
Robert Murrel Thomas McDowell
James Holt

Say It with Flowers

CHARLES GRANT GEORGE (in the Service)

CLARK BROTHERS

FLORISTS

FLOWERS FOR ALL OCCASIONS

407 Charlotte Avenue

NASHVILLE 3, TENN.

COLORED "Y"

Phone 6-4774

**NASHVILLE CHINA &
EQUIPMENT CO.**

HOTEL AND RESTAURANT
EQUIPMENT AND SUPPLIES

219 Fourth Avenue, South

NASHVILLE, TENN.

Phone 6-7271

We Cover the Earth

**UNIVERSAL LIFE INSURANCE
COMPANY**

A POLICY FOR
EVERY HOME

1501 Jefferson Street

Telephone 6-7507

Mr. H. A. Gilliam, *District Manager*

THANKSGIVING DINNER MENU

ROAST TURKEY CRANBERRY SAUCE CREAM PEAS MASHED POTATOES
OYSTER DRESSING GIBLET GRAVY HOT ROLLS

Meet Your Old Friends After the Game at

CLUB DEL MOROCCO



2417 Jefferson Street
Phone 6-9144

☆
The Famous
BLUE ROOM
and
**SPORTSMAN'S
CLUB**

☆
TEDDY ACKLIN
Proprietor
JIMMIE COFFEY
Manager

Compliments of

K. GARDNER

Funeral Director

Phone 6-6614

K. Gardner Building

419 Fourth Avenue, North

**CLARK HARDWARE
CO.**

Jobbers and Dealers

HARDWARE • SPORTING GOODS
KINDRED LINES

315 Broadway

NASHVILLE 3, TENN.



Best Wishes

**NASHVILLE MACHINE
& SUPPLY COMPANY**

NASHVILLE, TENNESSEE



Nashville's Finest

A Product of

Nashville Pure Milk Co.

PHONE 5-6451

*With the
Compliments
of*

**M. P. BROTHERS
COMPANY**



**SIEGRIST'S
PIE BAKERY**

"THEY MELT IN THE MOUTH"



Compliments

**JOHN E. HOOD
PHOTOS**



**PROFESSIONAL
COMMERCIAL PHOTOGRAPHERS**



Phone 5-1512
TWELFTH AT BROAD

McKissack & McKissack
REGISTERED ARCHITECTS



Morris Memorial Building



Phone 6-8819

NASHVILLE, TENNESSEE



MOSES McKISSACK **CALVIN L. McKISSACK**
License No. 147 License No. 148

Fresh Fish . . . Oysters . . . Sea Foods

**NELSON'S FISH
& OYSTER CO.**

RETAIL AND WHOLESALE



426 Deaderick Street Nashville 3, Tenn.

PHONE 6-0354

To Alumni, Knoxville Fans, and Friends

GREETINGS

from the

1946-1947

**SOPHOMORE
CLASS**

of

TENNESSEE STATE COLLEGE



OFFICERS

GILBERT R. MASON *President*
A. V. MILLER *Vice-President*
BETTYE COLEY *Secretary*
HELEN I. SCHOFIELD *Assistant Secretary*
O'FERRELL NELSON *Treasurer*

"TABLE-TEST"

EGGS - POULTRY - MEATS



ALLOWAY BROTHERS
COMPANY

Distributors

COMPLIMENTS OF

A FRIEND

GREETINGS TO OUR FRIENDS

IN

KENTUCKY AND TENNESSEE

SUPREME LIBERTY LIFE
INSURANCE COMPANY

3501 SOUTH PARKWAY— CHICAGO, ILLINOIS

DISTRICT OFFICE: 409 CHARLOTTE

L. B. HUNT, *Manager*, Nashville

FRATERNITY AND SORORITY SONGS

(TENNESSEE STATE COLLEGE)

PEP SONGS OF LAMBDA ETA SIGMA

(Tune: "My Buddy")

Through the year's we'll always love you,
Lambda Eta Sigma so true.
We love thee; we love thee;
Your shining gold and blue.

We will always call you our Queen
And always hold you in our esteem.
Dear Lambda, dear Lambda,
We'll love you to the end.

—Charlesetta Spurlock.

(Tune: "In the Gloaming")

Lambda Eta Sigma Quills,
Looking upward to our goal;
But someday we'll be Lambdas,
Lambdas true and strong and brave;
Our ambition to be loving,
Loving kind to all we see.
That's the spirit of our Jewels;
Hail our code, our glorious creed.

May the aim of every pledgee
Be to work till life is o'er,
Always striving for the better,
Guiding others to our shores;
Then with colors blue and gold,
We'll succeed in every aim;
We will think of dear Miss Redmond,
Lambda Eta Sigma's guide.

—Charlesetta Spurlock.



DELTA SIGMA THETA NATIONAL HYMN

Delta! with glowing hearts we praise thee
For the strength thy love bestows,
For the glowing grace of thy sisterhood
And the power that from it flows.
Keep us in a strong endeavor
And our souls to rapture raise.
Delta lights the flame and ever
Warms our hearts her bonds to praise.

CHORUS

Delta Sigma Theta! we rejoice in thee!
Delta Sigma Theta! we pledge thee loyalty
Devoted to truth; a bond of our youth
That keeps our hearts clean and pure to the end;
The bright gleam of thy vision has lighted the world;
Delta Sigma Theta! our own.

Delta, with loyal hearts we gather
To renew our vows of love;
In the forceful bond of devoted trust
As our womanhood moves on.
Strengthen in us, old or younger,
As our ranks increase and grow;
Delta's ideals ever stronger,
Glorious in triumphant pow'r.

—Alice Dunbar Nelson and Florence Cole Tolbert.

DELTA, WE CHERISH THEE

(Tune: "Down by the Old Mill Stream")

Delta, you'll ever be
In our hearts so true;
Happy and gay are we
As we think of thee;
And as we go our way,
Help us ne'er to stray;
True to thy will we'll always be;
Delta, we cherish thee.

And when someday we're old,
We'll have you to hold,
Memories pure and sweet,
Words can ne'er repeat,
For you're our only dream;
We'll crown you our queen;
You're our ideal; your face is real;
Delta, we cherish thee.

—French Henderson.



DELTA PEP SONG

I'm so glad I'm a college girl;
Umph—there's a whole lot more.
I'm so glad I'm a college girl;
Umph—there's a whole lot more.
I'm so glad I'm a college girl;
Umph—there's a whole lot more.
Umph—there's a whole lot . . .
Umph—there's a whole lot . . .
Umph—there's a whole lot more.

I'm so glad I'm a sorority girl;
Umph—there's a little bit more.
I'm so glad I'm a sorority girl;
Umph—there's a little bit more.
I'm so glad I'm a sorority girl;
Umph—there's a little bit . . .
Umph—there's a little bit . . .
Umph—there's a little bit more.

I'm so glad I'm a Delta girl;
Humph—there's nothing more.
I'm so glad I'm a Delta girl;
Humph—there's nothing more.
I'm so glad I'm a Delta girl;
Humph—there's nothing . . .
Humph—there's nothing . . .
Humph—there's nothing more.



DELTA SIGMA THETA SWEETHEART SONG

She may be an Omega sweetheart
Or the dream girl of Alpha Phi Alpha;
She may wear the Kappa diamond,
Or her love may a Sigma be;
But if she wears the Delta symbol,
Then her first love is a D. S. T.

FRATERNITY AND SORORITY SONGS

(TENNESSEE STATE COLLEGE)

ALMA MATER

In the land of golden sunshine,
By the Cumberland's fertile shore,
Stands a school for greatest service,
One that we adore.

Alma Mater, how we love thee!
Love thy white and blue.
May we strive to meet thy mandates
With faith that's true.

Many come to thee for knowledge,
Come from East, North, South, and West,
For they know that thou dost offer
Such a rich bequest.

Alma Mater, all thy children
Worship at thy shrine;
May the God of nations bless thee
With gifts divine!

Send forth sons both strong and valiant,
Send forth daughters wise and true,
Filled with hope and dauntless courage,
Motives sane and true,

Alma Mater, kindly mother,
Smile on Tennessee;

May she lift her head toward heaven,
Honor country, God, and thee.

—L. M. Averitte, 1918.



SIGMA GAMMA RHO HYMN

Sigma Gamma Rho, of thee we sing in chorus,
Thy beacon light shines clear before us,
Lighting the way to heights of great attainments,
Aims soaring upward until we reach the sky.

Sigma Gamma Rho, to the we'll cling forever,
Bound by ties of love and sisterhood,
Guarding each aim that will preserve our standards,
Lest we shroud prove unworthy of thee.



DEAR OLE TENNESSEE

Dear ole Tennessee State College,
How we love thy glorious name;
How each of thy sons and daughters
Strives to add unto thy fame!

A is for your agriculture,
I is for your industry,
All that adds to truth and beauty
Has a sacred home with thee,

Dear ole A. and I.,
Live in our hearts until we die!
Bright the path that leads to thee
O'er the hill of majesty,

We shall ne'er forget the days
We've spent with thee,
A. and I., Rah, Rah, Rah,
A. and I., Rah, Rah, Rah,
Dear ole A. and I.



We want a touchdown,
We want a touchdown,
We want a touchdown,
N O W ! ! !



Hello Hello
State says hello

ZIGGETY BOOM

Ziggety Boom, Rah, Rah, Rah;
Ziggety Boom, Rah, Rah, Rah;
Who Rah, Who Rah;
A. and I., Rah, Rah;
Yea, A. and I.; Yea, Yea.



BASKET, BOYS

Basket, Basket, Basket, Boys;
You make the baskets;
We make the noise.



LAMBDA ETA SIGMA NATIONAL HYMN

I

Lambda Eta Sigma, with your noble heart,
Loyalty we pledge you; may you never part;
May your aims and ideals be our guiding star;
Keep us true and loyal, though we travel far.

CHORUS

Lambda Eta Sigma, we love you,
Love you and your colors, gold and blue;
Praise you for your service and united stand
For Lambda Eta Sigma true and grand.

II

We will give you service, strive in every way
To foster all your ideals; may you grow each day
Tall and strong and mighty like the giant oak;
May you e'er be sheltered from the tempest stroke.

—Words and Music by Virgie G. Hale.



OH, LAMBDA ETA SIGMA

I

The founder of our Lambda, gleaming cherished gifts to
share,
Has garnered truths of ideals won without the sword and
spear;
Her crowned endeavors, Literati! Lambda! Queen of Arts!
In crimson stands indelibly a song now in our hearts.

CHORUS

Oh, Lambda Eta Sigma! with colors gold and blue,
With standards high and lofty, with ideals fair and true,
We love thee and adore thee, and solemnly declare
To henceforth serve, protect thee, while we thy goodness
share.

II

While Lambda brings us culture in the literary field,
While Eta brings us honor that persistence only yields,
While Sigma guides our efforts on toward unselfish end
In songs of adoration shall our hearts and voices blend.

III

The world shall see our colors set in purest gold and
blue,
And learn of love more golden yet, of truth more beauty,
too.

When stands to lesser view displayed, the scroll, key, or
quill,

From Alpha to Omega, let this be our anthem still.

—Dr. W. S. Silcott, Alpha Gamma Chapter,
Psychiatrist, Meharry Medical College.

FRATERNITY AND SORORITY SONGS

(TENNESSEE STATE COLLEGE)

PHI BETA SIGMA HYMN

I

The founders of our wondrous band,
In numbers though were three,
Taught ideals high that soon became
A part of every Phi.
Said they, our cause let us make known,
Oh, brothers, don't dismay;
Fear not, fight on, for in this wise
Our cause speeds on its way.

II

From Western plains to Eastern hills
There comes a shout of praise,
A shout that tells of victory,
Bid Beta Sigma raise;
A shout that swells to loud hurrahs
And to us seems to say,
Fear not, fight on, for in this wise
Our cause speeds on its way.

III

March on, march on, ye mighty hosts,
Nor think the battle's done,
Nor of the future deeds to boast till
We've the victory won.
And when we hear from time to time,
Sigma, what of the day, we'll
Thunder back along the line,
Our cause speeds on its way.



NATIONAL ALPHA PHI ALPHA HYMN

I

In our dear Alpha Phi Alpha fraternal spirit binds,
All the noble, the true and courageous—
Manly deeds, scholarship, and love for all mankind—
Are the aims of our dear fraternity.

CHORUS

Alpha Phi Alpha, the pride of our hearts,
And loved by us dearly art thou,
We cherish thy precepts, thy banner shall be raised,
To thy glory, thy honor, and renown.

II

We hold ever aloft noble ideals and aims,
Carrying out earth's and heaven's grand command.
Our true hearts ever strive success' goal to gain,
That our fraternity's praises may be sung.

III

College days swiftly pass, imbued with memories fond,
And the recollection slowly fades away.
Our renowned Alpha Phi Alpha and dear fraternal bond,
May there every abide and with us stay.

Motto: "First of all, servants of all, we shall transcend all."



OMEGA PSI PHI NATIONAL HYMN

Omega, dear, we are thine own,
Thou art our life, our love, our own;
We'll sing thy praises far and nigh,
We love Omega Psi Phi.

To all thy precepts make us true;
Live nobly as all real men do,
Let manhood be our eternal shrine;
With faith in God and heart and mind.

Through days of joy and years of pain,
To serve thee e'er will be our aim;
And when we say our last good-bye,
We'll love Omega Psi Phi.



OMEGA PSI PHI SWEETHEART SONG

Dear Omega Girl, I love you
With a love that is divine—
Swear by all the stars above you
That my love will be but thine—
When the moon appears, those pleasant mem'ries,
Then I'll have you dear, but not for really,
Dear Omega Girl, I love you,
Sweetheart of Omega dear.



ZETA PHI BETA NATIONAL SORORITY SONG

With fervent hearts we pray
For you, Zeta, each day.
You've always stood for right
Rather than for the might.
We'll love you ever,
And forsake you never.
When Zeta calls we'll answer one and all.

CHORUS

Zeta Phi Beta, we love you so!
Your very name sets our hearts aglow.
You're brave and you will see
That Zeta Phi Beta means victory.

—*Soror Anita Turpeau, 1924.*



THE NATIONAL HYMN ALPHA KAPPA ALPHA SORORITY

Through the years as we struggle
With main and with might
To capture a vision fair,
There's one thing that spurs us to victories' height
With a fellowship sincere and rare.

Oh, A. K. A., dear A. K. A.,
Hearts that are loyal
And hearts that are true,
By merit and culture
We'll strive and we'll do
Things that are worth while,
And with a smile
We'll help each other,
For we know there's no other
Like our sisterhood, A. K. A.

FRATERNITY AND SORORITY SONGS

(TENNESSEE STATE COLLEGE)

THE KAPPA ALPHA PSI PIN SONG

Tell me why she wears his pin;
Tell me why she's strong for him;
Tell me why she is so true.
She told me why; now I'll tell you.
Because he is her Kappa beau;
Because he is her knight of hope;
Because he wears the Kappa shield—
That is the reason she had to yield.



THE KAPPA SWEETHEART SONG

You're as pretty as a picture
And as sweet as you can be.
I love you so sincerely;
You're all the world to me;
And if ever I should lose you,
It would surely break my heart.
For I love you; I adore you;
You're my Kappa Alpha Psi sweetheart.
You are fairer than the fairest;
I have loved you all the while.
I know you're my Kappa darling,
For you have that Kappa style.
Faith should never let me leave you;
Faith should never let us part;
For I love you; I adore you;
You're my Kappa Alpha Psi sweetheart.



THE SCROLLERS SWEETHEART SONG

You are like a melody,
Just as sweet as you can be;
And there's no one in this wide world,
No one else for me.
You are like a song divine,
Like a ray of rare sunshine;
And I love you and adore you
In this heart of mine.

CHORUS

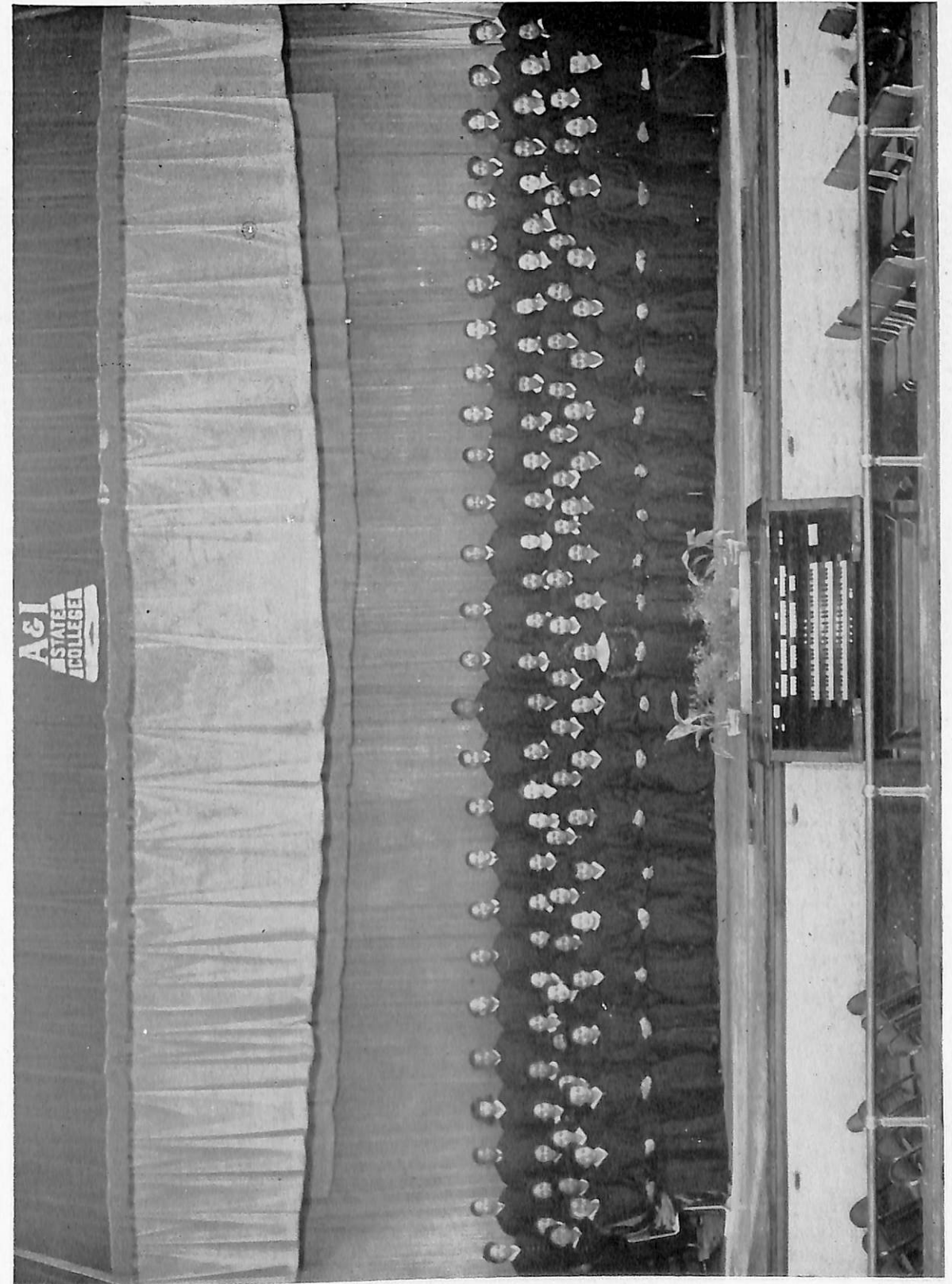
Though I search everywhere,
I'd find none to compare,
And without you I'd feel so sad,
I would sit and I'd stare,
With nobody to care,
If I thought you would treat me bad.
I have loved you from the start;
Tell me that we'll never part;
For your name is written deeply
In the scroll of my heart.

K N O X V I L L E

College Hymn

Close to our hearts, dear old K. C.,
Shall ever be thy memory.
We love thy dear old halls,
We love thy trees and verdant hills,
Thy deep toned bell whose music thrills,
Thy consecrated walls.
Deep in our hearts for evermore
Thy dear old name shall be.
And while the silent years go by
We'll live for thee, K. C.

—Fitzpatrick-Wilson.



Tennessee A. and I. Chorus

TENNESSEE STATE COLLEGE
ASSISTANTS TO DIRECTOR OF ATHLETIC PUBLICITY



GEORGE STONE
Senior

*Student Assistant in the Department
of Athletic Publicity*



EARL WELLS
Junior

*Student Assistant in the Department
of Athletic Publicity*



MR. LEON FARBES

*Team Spotter and Electrical Tech-
nician for the Department of Athletic
Publicity*

FLASH!

THE TENNESSEE STATE BLUE AND WHITE "TIGERS," FOR THE SECOND CONSECUTIVE YEAR, WON THE MIDWESTERN ATHLETIC ASSOCIATION FOOTBALL CROWN ON NOVEMBER 16, 1946, WHEN THEY DEFEATED LINCOLN UNIVERSITY OF JEFFERSON CITY, MISSOURI, BY THE SCORE OF 12-0.

Buy More . . .

VICTORY BONDS

and Have Your Future Secured!

1946 VARSITY FOOTBALL LETTER MEN OF TENNESSEE STATE LINE UP IN FORMATION OF A HELMET FOR THE KNOXVILLE COLLEGE GAME

