

# nursery e-news

## NEW ADDITION!

- Dr. Chenchen Kang was recently hired as TSU Assistant Professor at the Otis L. Floyd Nursery Research Center
- His research will focus on precision and autonomous machinery for ag purposes (designing and evaluating intelligent systems to improve efficiency and sustainability); this includes AI, field robotics and smart sensing technology
- Prior to starting at TSU, Dr. Kang worked on robotic spraying systems, IoT-based crop monitoring and computer vision applications for improving orchard production with Penn State
- Please reach out to Dr. Kang if you are interested in collaborating on projects to benefit the nursery industry: ckang1@tnstate.edu



Dr. Chenchen Kang

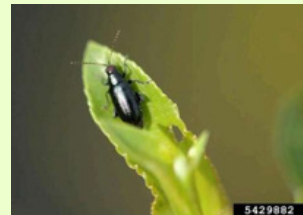
## REDHEADED FLEA BEETLE (*Systema frontalis*)

- Redheaded flea beetle (RHFB) is a chewing insect pest in ornamental production.
- Look for their feeding damage or the adults on their preferred plants: panicle hydrangea, itea and Japanese holly (*Ilex crenata*), although they will feed on a wide of plants
- Although not a major insect pest, we are monitoring their presence and activity in nurseries in middle TN
- If you have RHFB in your nursery, please contact either Karla Adesso (kaddesso@tnstate.edu) or Kaitlin Barrios (kbarrios@tnstate.edu)



RHFB feeding damage on panicle hydrangea (*Hydrangea paniculata*).  
Photos credit: Kaitlin Barrios

Adult RHFB  
Photo credit: UGA Extension



## COTTON JASSID LEAF HOPPER (*Amrasca biguttula*)



Figure 8. Damage to ornamental hibiscus by two-spot cotton leafhopper in Puerto Rico.  
Photo by Alondra Nieves, graduate student, UPRM, PR

- This non-native leaf hopper has been spreading in FL and could potentially expand its range
- Adults are tiny and green, so the damage would likely be seen first: ‘hopperburn’, wilting and curling of leaves
- Prefer cotton and okra but also found on eggplant, sunflower and other plants; including ornamental *Hibiscus* species

Cotton Jassid  
Pest Alert and  
Info



# nursery e-news

## BROWN WINGED PLANT HOPPER (BWP)

- Potential new pest in the future
- The first confirmed report in the US was recently made in GA. It has **not** been reported in TN.
- A leaf hopper insect native to China.
- Damage to woody ornamentals and fruit trees includes: feeds on phloem/xylem in plants, excretes honeydew resulting in sooty mold on leaves and it lays eggs in twigs like a cicada.



Figure 1 nymph of brown winged plant hopper (*Pochazia shantungensis*) © Chris Malumphy



Figure 4 An egg-laying wound on *Prunus lusitanica* (Portuguese laurel) caused by *Pochazia shantungensis*. Note how the wound doesn't extend beyond axils. The wax has been rubbed off, but the fibres remain © Fera Science Ltd

## TNLA 2025 GOLF CLASSIC

Oct. 17<sup>th</sup> 8am – 3pm Starts at 8am. Lunch provided.  
Located at: Fall Creek Falls Golf Course Cash prizes after lunch.  
626 Golf Course Road  
Spencer, TN 38585 [Registration Link](#)



### MTNA

MEMBERSHIP APPRECIATION NIGHT

Cedarwood Pumpkin Patch  
2900 Old Nashville Hwy.  
McMinnville, TN 37100

THURSDAY 16 5-8PM

OCTOBER

Cedarwood Pumpkin Patch- Admission Free  
Cedarwood hotdog meal special - \$6. Kitchen will also be open  
Professional photographer- \$5 per digital download

## TNGRO OCT. 23 & 24 [TNGRO site](#)

### Schedule

- October 22<sup>nd</sup>
- Exhibitor Setup: 8-4
- October 23<sup>rd</sup>
- Trade Show: 9am-5pm
  - Education Seminars: 9:30am-4:30pm
  - Annual Awards Banquet & Business Mtg: 5pm
- October 24<sup>th</sup>
- Trade Show: 9am-2pm
  - Move out: 2pm-5pm

| SCHEDULE   |  |
|--|--|
| 9:30AM - 10:30AM   | Plant Health<br>By Dr. Aaron J. Palmateer  |
| 10:45AM - 11:45AM  | Scouting Smarter: Early Pest Detection and Identification<br>By Suzanne Wainwright, Buglady Consulting |
| 1:00PM - 2:00PM  | VSD Research Updates<br>By Dr. Fulya Baysal-Gurel  |
| 2:15PM - 3:15PM  | Biological Control of Plant Diseases and Biopesticides<br>By Dr. Fulya Baysal-Gurel                    |
| 3:30PM - 4:30PM  | J1 Visa Program<br>By Hunter Alston  |
| EARN 4 PESTICIDE CREDITS   |  |
| Registration \$30<br>Includes access to all sessions and trade show floor<br><a href="https://tnla.com/TNGRO">https://tnla.com/TNGRO</a> |  |



FOLLOW US ON FACEBOOK FOR UP-TO-DATE INFO AND NEWS

### TSU Nursery Research Center

789 likes • 875 followers

