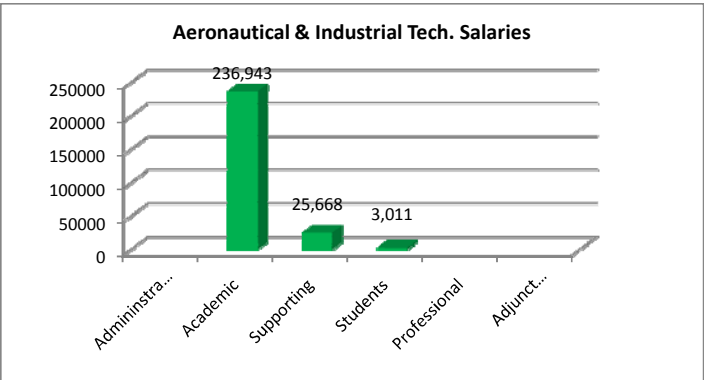
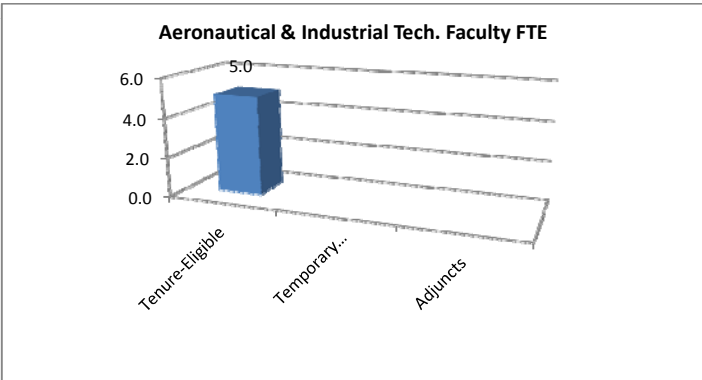
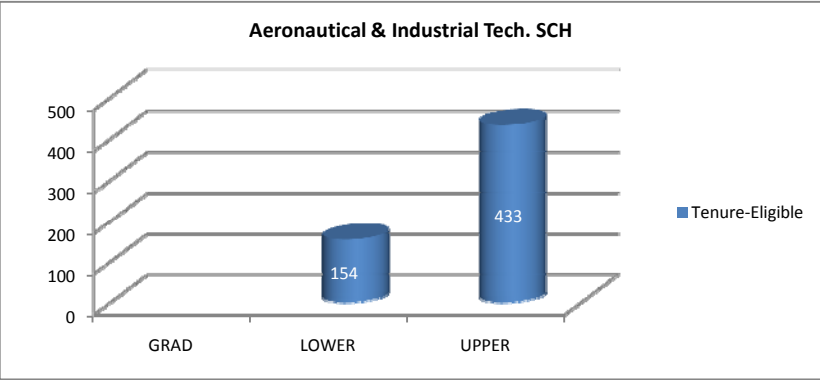
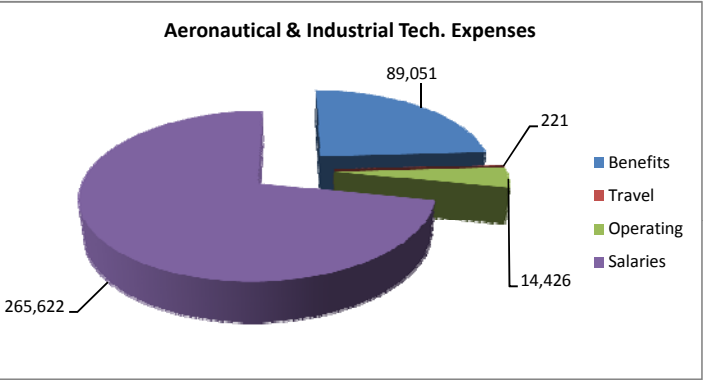
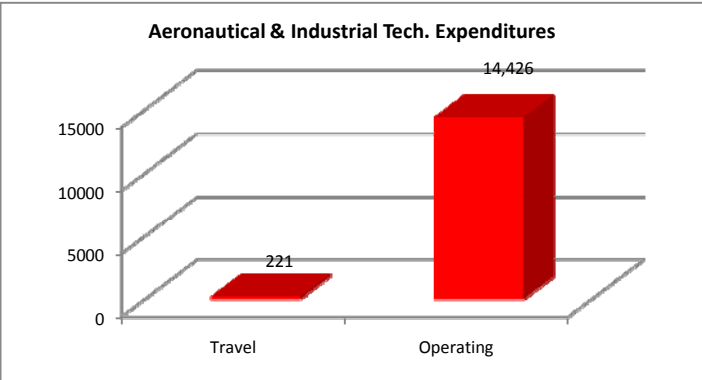


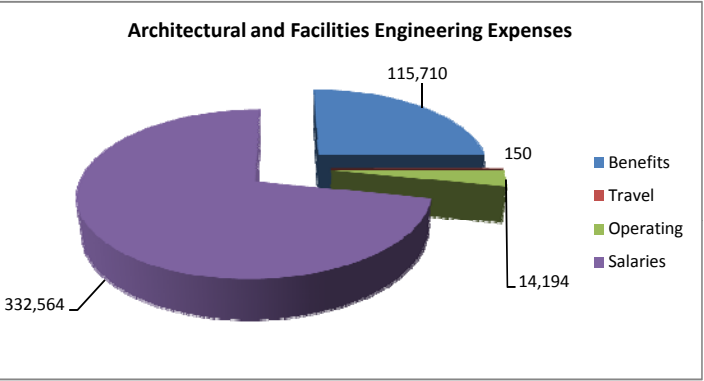
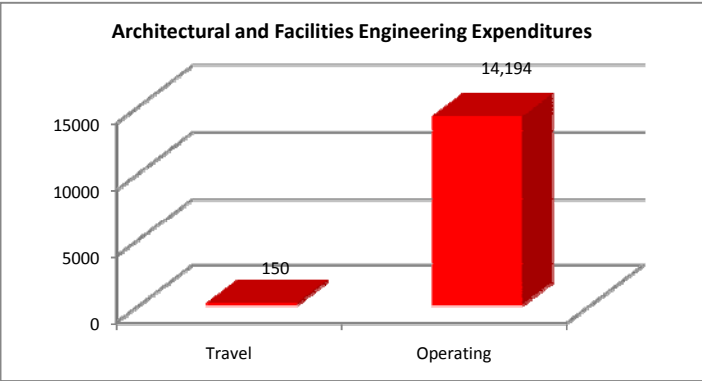
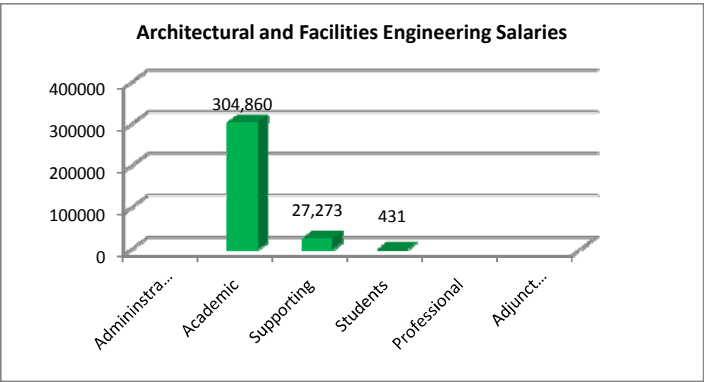
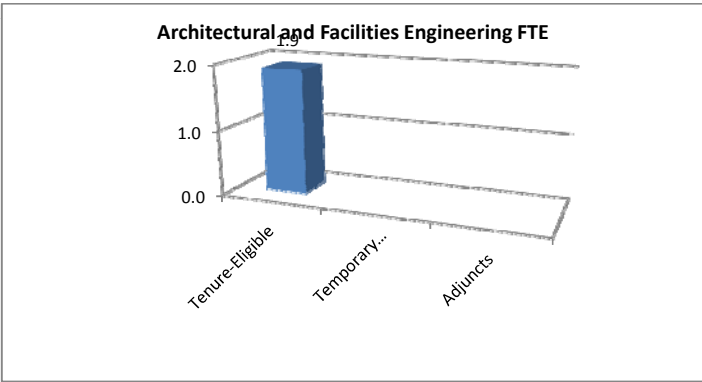
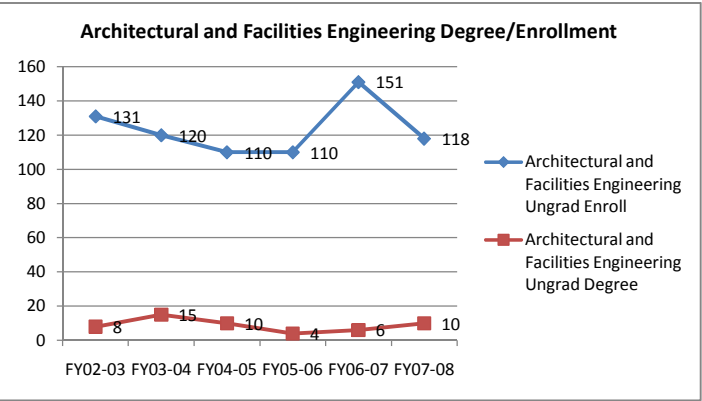
1. Total Headcount faculty (Fall 2007)	2
2. Total FTE Faculty (Fall 2007)	5.0
3. Tenured/tenure eligible faculty as % of total instructional faculty (Fall 2007)	100%
4. FTE students taught (Fall 2007)	21
5. Total Expenditures Aeronautical & Industrial Tech.	\$ 369,320.00
6. Direct instructional expenditure per SCH	\$ 534.00
7. Direct instructional expenditure per FTE student	\$ 16,010.00
8. Personnel cost as percent of direct instructional expenditure	96%



UNDERGRADUATE PROFILE		
Total	59	
Gender		
Women	16	27%
Men	43	73%
Race/Ethnicity		
African American / Black	52	88%
American Indian / Alaskan Native	0	0%
Asian / Pacific Islander	1	2%
Hispanic	0	0%
International	0	0%
White	6	10%
Race/Ethnicity Unknown	0	0%
Geographic Distribution (Degree-Seeking)		
Tennessee	56%	
Other US States & Territories	41%	
Other Countries	3%	
Age (Degree-Seeking)		
Average Age	23.32	
Percent of Undergraduates Age 25 or Older	20%	

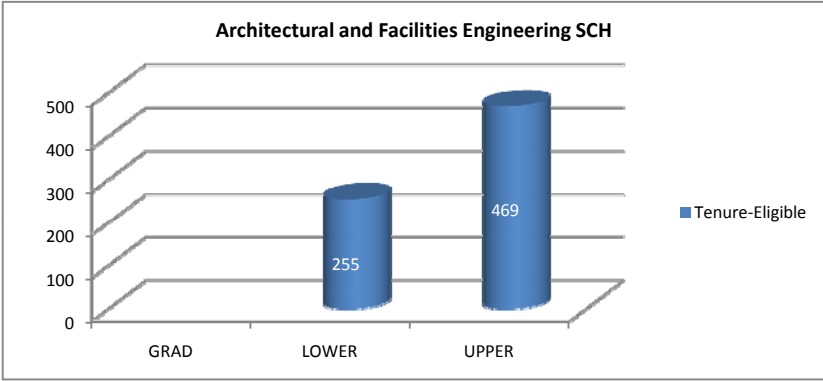


NOTICE: Data Sources: SIS Batch Reports; Banner Scripts & Query Reports; 2008-2009 Budget Summary. This data portrait, prepared by the Office of Institutional Effectiveness, Quality & Assessment, is for internal use only by TSU.



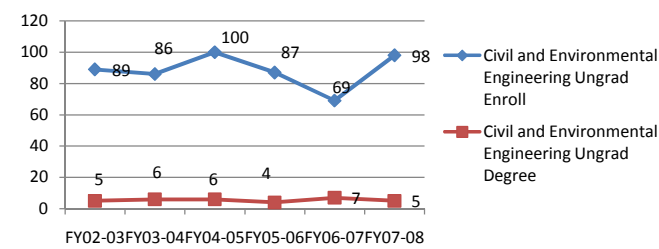
1. Total Headcount faculty (Fall 2007)	5
2. Total FTE Faculty (Fall 2007)	1.9
3. Tenured/tenure eligible faculty as % of total instructional faculty (Fall 2007)	100%
4. FTE students taught (Fall 2007)	22
5. Total Expenditures Architectural and Facilities Engineering	\$ 462,618.00
6. Direct instructional expenditure per SCH	\$ 675.00
7. Direct instructional expenditure per FTE student	\$ 20,249.00
8. Personnel cost as percent of direct instructional expenditure	97%

UNDERGRADUATE PROFILE		
Total	118	
Gender		
Women	36	31%
Men	82	69%
Race/Ethnicity		
African American / Black	106	90%
American Indian / Alaskan Native	0	0%
Asian / Pacific Islander	0	0%
Hispanic	1	1%
International	0	0%
White	11	9%
Race/Ethnicity Unknown	0	0%
Geographic Distribution (Degree-Seeking)		
Tennessee	50%	
Other US States & Territories	47%	
Other Countries	3%	
Age (Degree-Seeking)		
Average Age	21	
Percent of Undergraduates Age 25 or Older	12%	

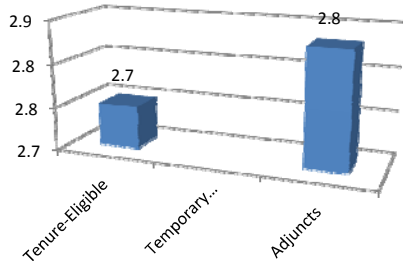


NOTICE: Data Sources: SIS Batch Reports; Banner Scripts & Query Reports; 2008-2009 Budget Summary. This data portrait, prepared by the Office of Institutional Effectiveness, Quality & Assessment, is for internal use only by TSU.

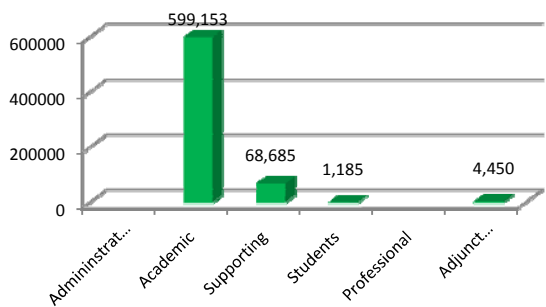
Civil and Environmental Engineering Degree/Enrollment



Civil and Environmental Engineering FTE



Civil and Environmental Engineering Salaries

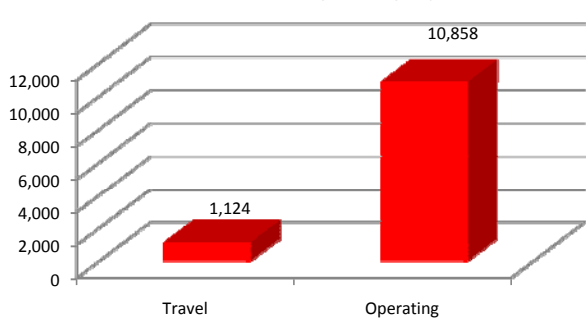


1. Total Headcount faculty (Fall 2007)	12.0
2. Total FTE Faculty (Fall 2007)	5.6
3. Tenured/tenure eligible faculty as % of total instructional faculty (Fall 2007)	45%
4. FTE students taught (Fall 2007)	46.5
5. Total Expenditures Civil and Environmental Engineering	\$ 874,758.00
6. Direct instructional expenditure per SCH	\$ 685.00
7. Direct instructional expenditure per FTE student	\$ 19,090.00
8. Personnel cost as percent of direct instructional ex	98%

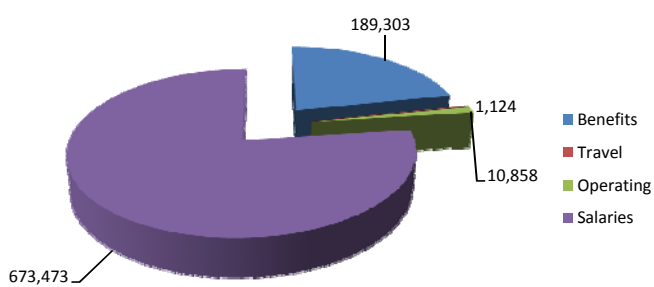
UNDERGRADUATE PROFILE

UNDERGRAD	
Total	98
Gender	
Women	22 22%
Men	76 78%
Race/Ethnicity	
African American / Black	75 77%
American Indian / Alaskan Native	0 0%
Asian / Pacific Islander	2 2%
Hispanic	2 2%
International	0 0%
White	19 19%
Race/Ethnicity Unknown	0 0%
Geographic Distribution (Degree-Seeking)	
Tennessee	72%
Other US States & Territories	27%
Other Countries	1%
Age (Degree-Seeking)	
Average Age	22.69
Percent of Undergraduates Age 25 or Older	24%

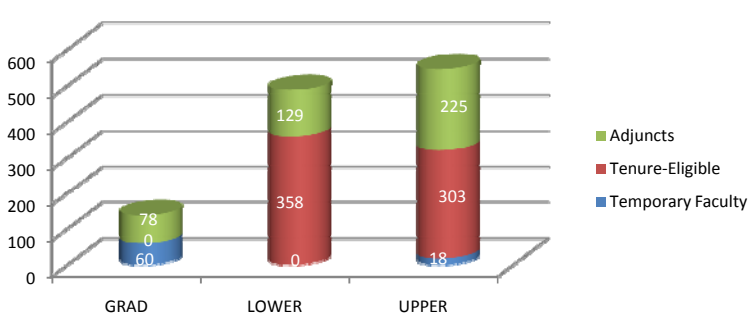
Civil and Environmental Engineering Expenditures



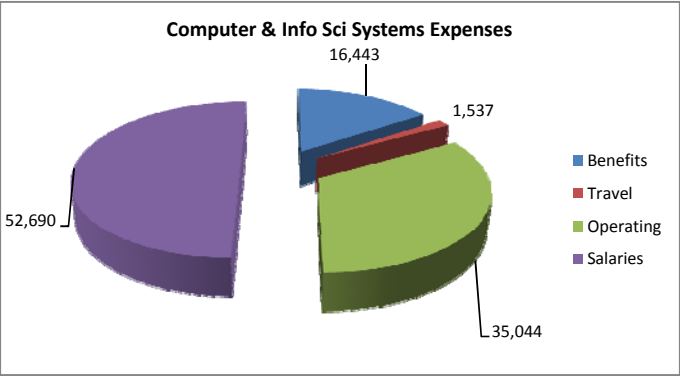
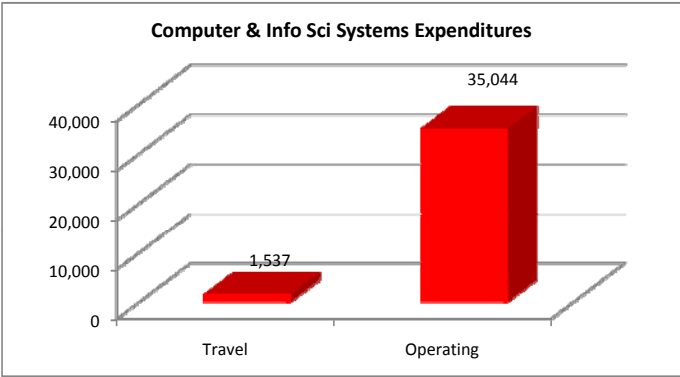
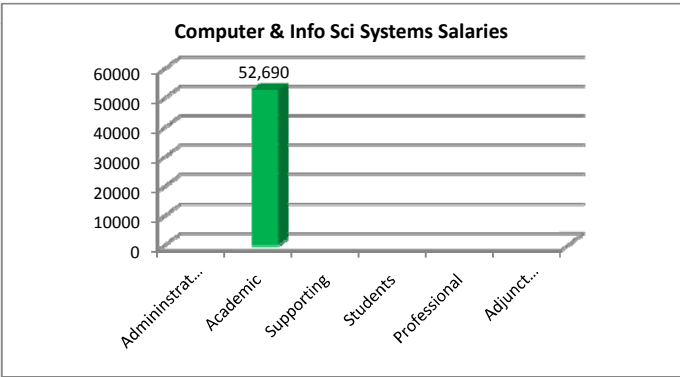
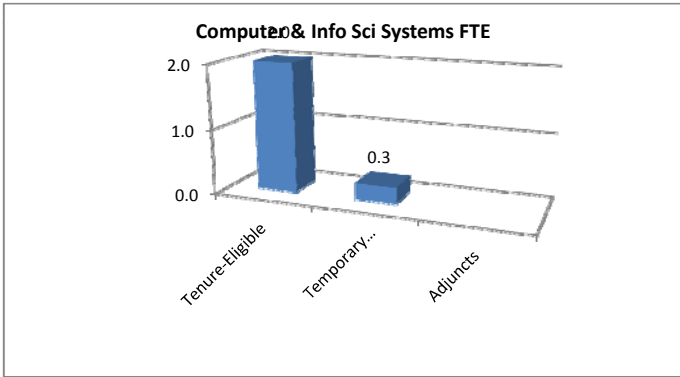
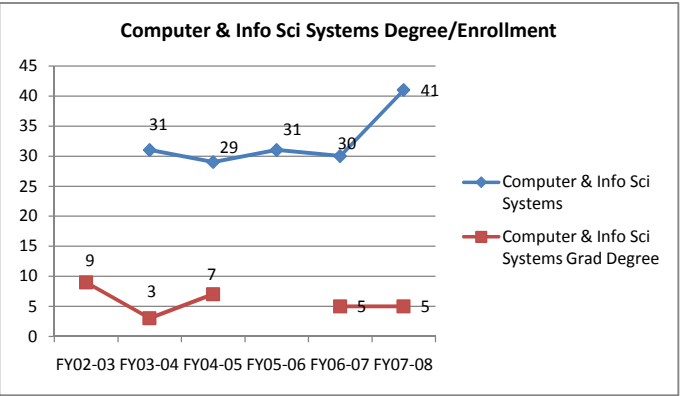
Civil and Environmental Engineering Expenses



Civil and Environmental Engineering SCH

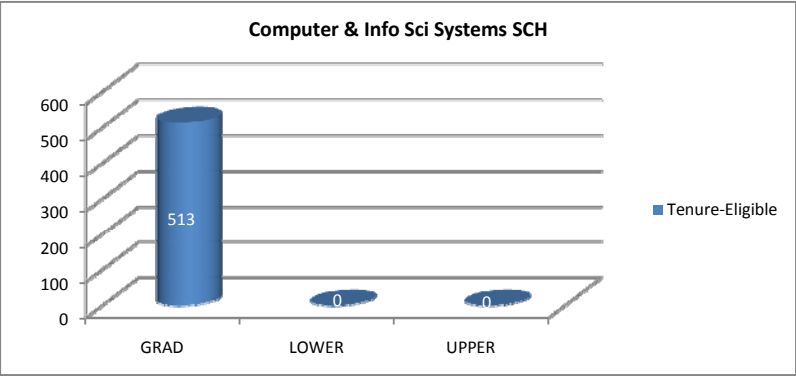


NOTICE: Data Sources: SIS Batch Reports; Banner Scripts & Query Reports; 2008-2009 Budget Summary. This data portrait, prepared by the Office of Institutional Effectiveness, Quality & Assessment, is for internal use only by TSU.

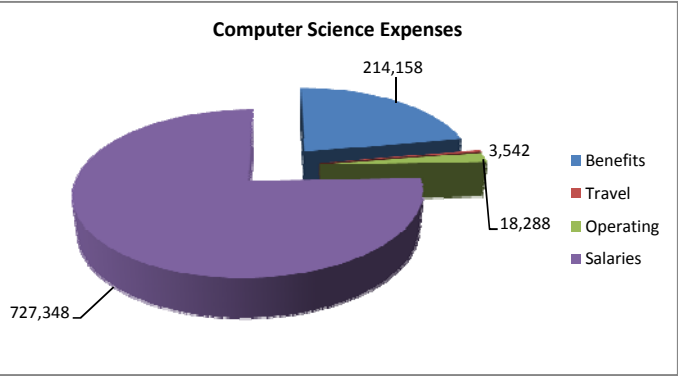
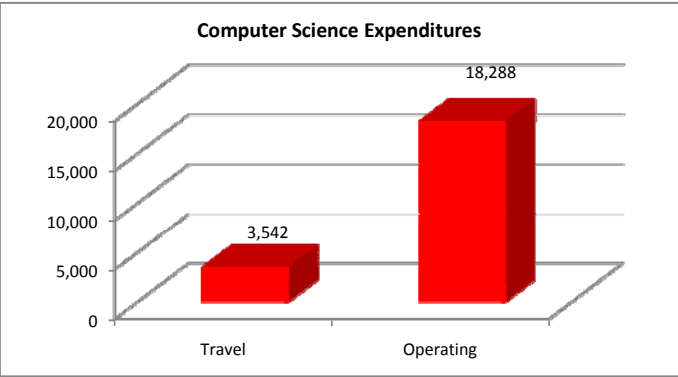
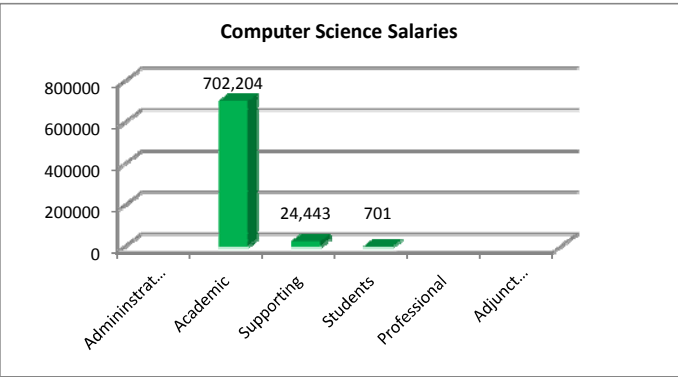
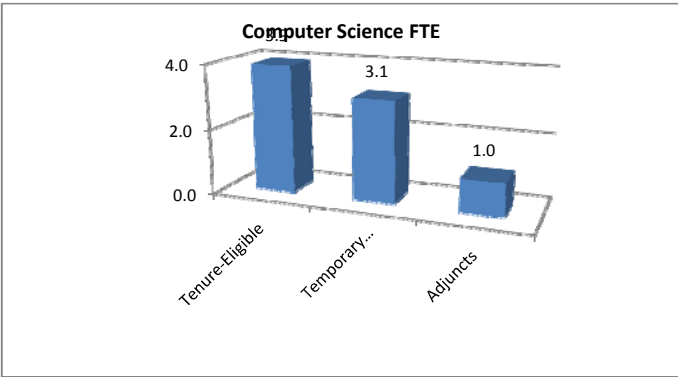
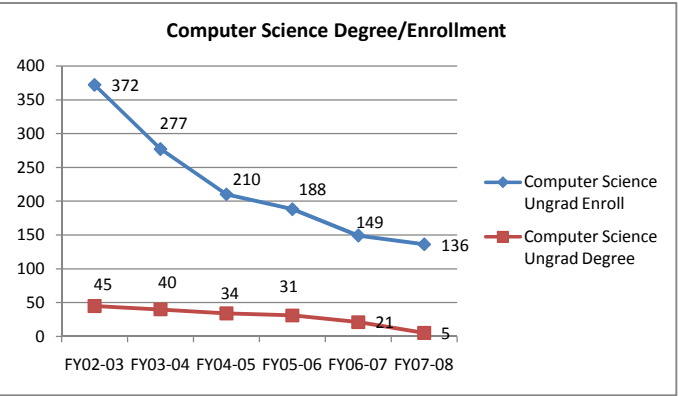


1. Total Headcount faculty (Fall 2007)	3.0
2. Total FTE Faculty (Fall 2007)	2.3
3. Tenured/tenure eligible faculty as % of total instructional faculty (Fall 2007)	73%
4. FTE students taught (Fall 2007)	54.9
5. Total Expenditures Computer & Info Sci Systems	\$ 105,714.00
6. Direct instructional expenditure per SCH	\$ 580.00
7. Direct instructional expenditure per FTE student	\$ 14,471.00
8. Personnel cost as percent of direct instructional ex	96%

GRADUATE PROFILE		GRAD
Total		41
Gender		
Women	10	24%
Men	31	76%
Race/Ethnicity		
African American / Black	16	39%
American Indian / Alaskan Native	0	0%
Asian / Pacific Islander	21	51%
Hispanic	0	0%
International	0	0%
White	4	10%
Race/Ethnicity Unknown	0	0%
Geographic Distribution (Degree-Seeking)		
Tennessee		29%
Other US States & Territories		15%
Other Countries		56%
Age (Degree-Seeking)		
Average Age		30.66
Percent of Undergraduates Age 25 or Older		68%

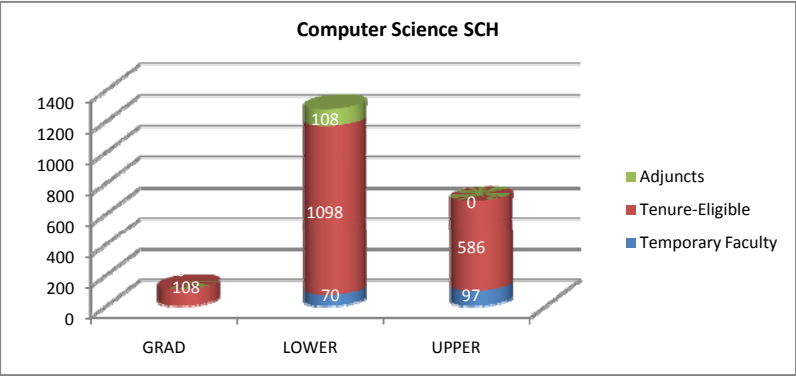


NOTICE: Data Sources: SIS Batch Reports; Banner Scripts & Query Reports; 2008-2009 Budget Summary. This data portrait, prepared by the Office of Institutional Effectiveness, Quality & Assessment, is for internal use only by TSU.

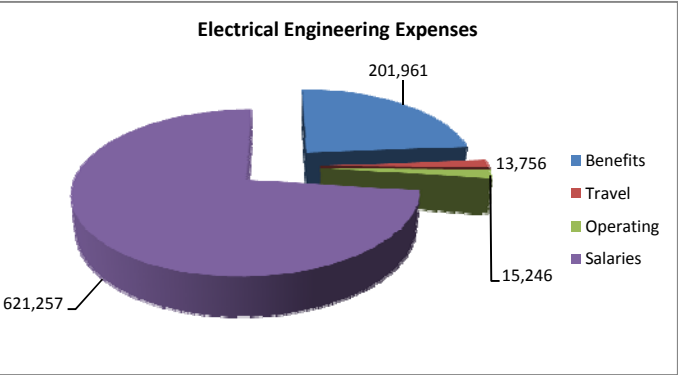
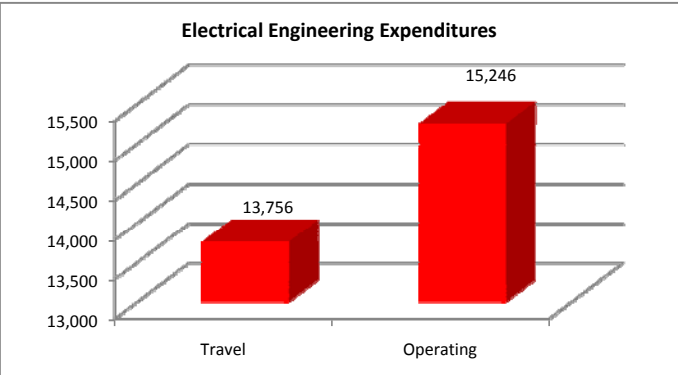
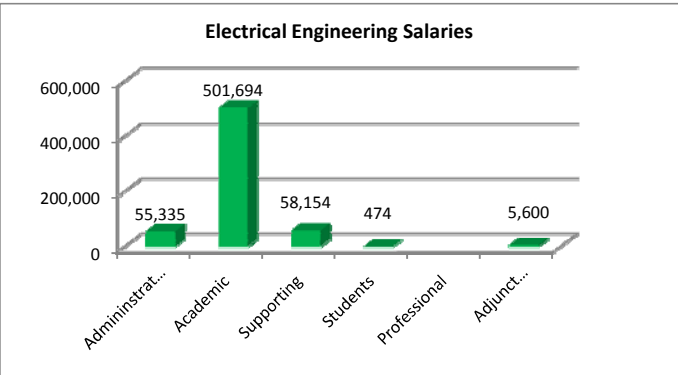
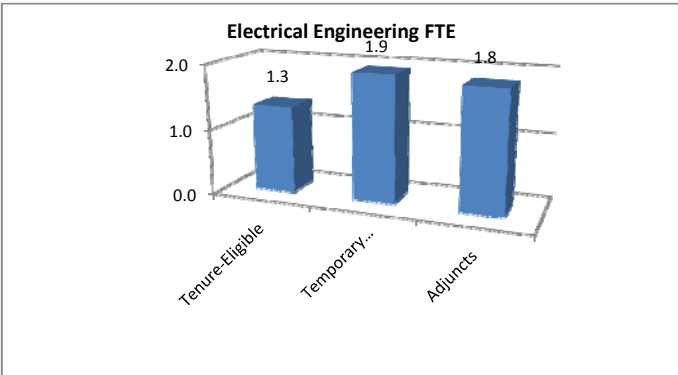
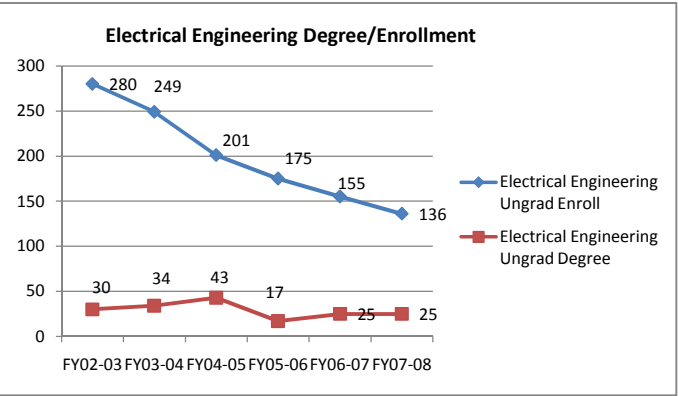


1. Total Headcount faculty (Fall 2007)	3.0
2. Total FTE Faculty (Fall 2007)	7.5
3. Tenured/tenure eligible faculty as % of total instructional faculty (Fall 2007)	87%
4. FTE students taught (Fall 2007)	72.5
5. Total Expenditures Computer Science	\$ 963,336.00
6. Direct instructional expenditure per SCH	\$ 504.00
7. Direct instructional expenditure per FTE student	\$ 15,123.00
8. Personnel cost as percent of direct instructional ex	98%

UNDERGRADUATE PROFILE		Undergrad
Total		136
Gender		
Women	39	29%
Men	97	71%
Race/Ethnicity		
African American / Black	117	86%
American Indian / Alaskan Native	0	0%
Asian / Pacific Islander	3	2%
Hispanic	1	1%
International	0	0%
White	15	11%
Race/Ethnicity Unknown	0	0%
Geographic Distribution (Degree-Seeking)		
Tennessee		78%
Other US States & Territories		21%
Other Countries		1%
Age (Degree-Seeking)		
Average Age		22.11
Percent of Undergraduates Age 25 or Older		16%

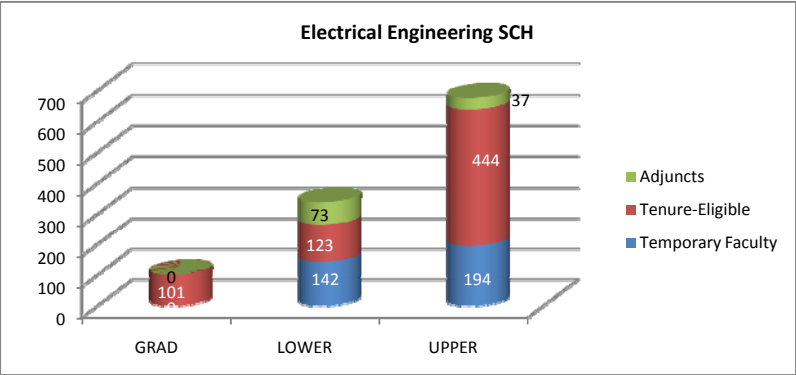


NOTICE: Data Sources: SIS Batch Reports; Banner Scripts & Query Reports; 2008-2009 Budget Summary. This data portrait, prepared by the Office of Institutional Effectiveness, Quality & Assessment, is for internal use only by TSU.

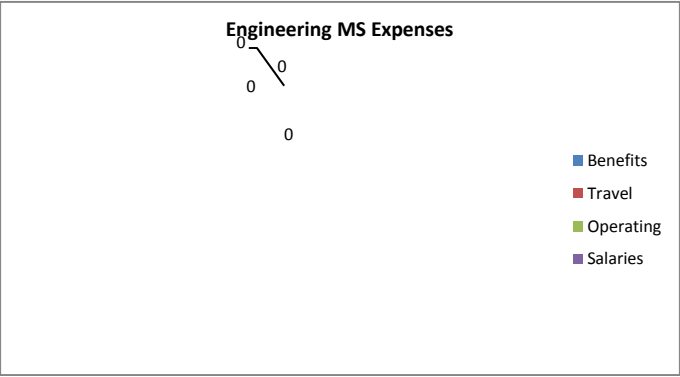
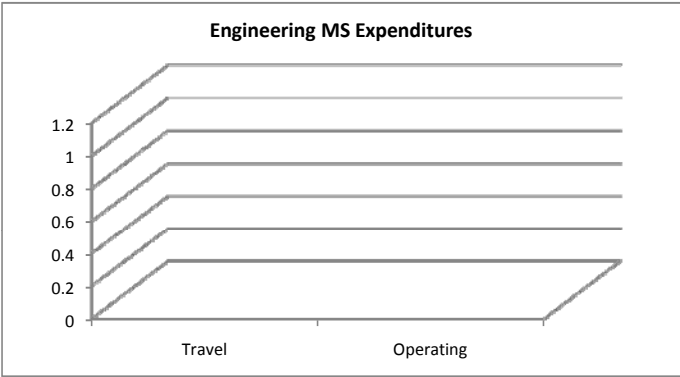
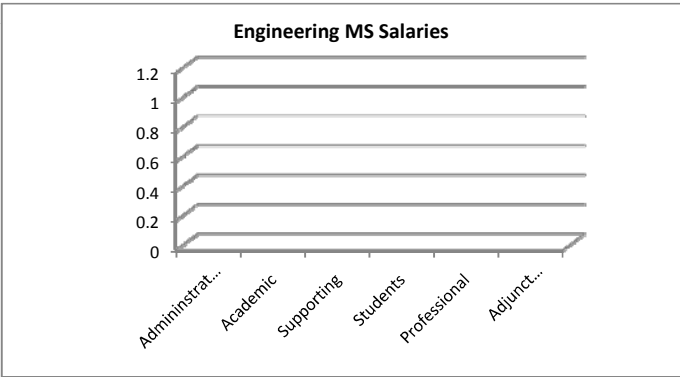
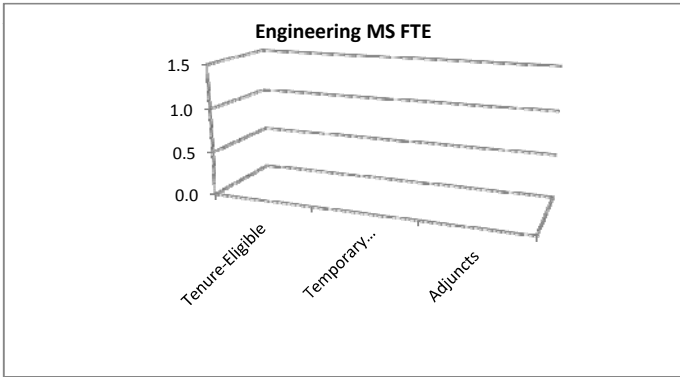
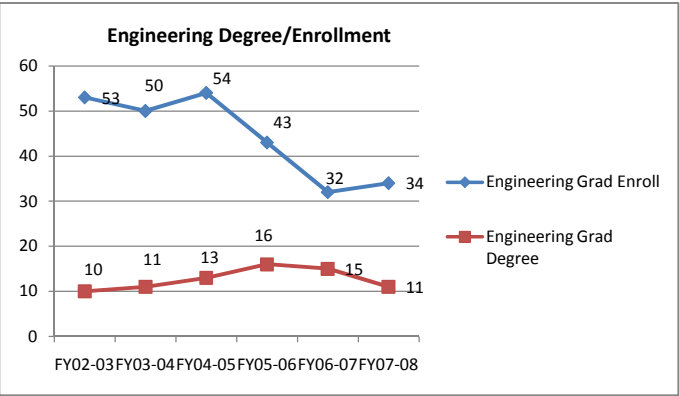


1. Total Headcount faculty (Fall 2007)	9.0
2. Total FTE Faculty (Fall 2007)	6.2
3. Tenured/tenure eligible faculty as % of total instructional faculty (Fall 2007)	73%
4. FTE students taught (Fall 2007)	54.9
5. Total Expenditures Electrical Engineering	\$ 852,220.00
6. Direct instructional expenditure per SCH	\$ 580.00
7. Direct instructional expenditure per FTE student	\$ 14,471.00
8. Personnel cost as percent of direct instructional ex	96%

UNDERGRADUATE PROFILE		Undegrad	
Total			136
Gender			
Women	30	22%	
Men	106	78%	
Race/Ethnicity			
African American / Black	117	86%	
American Indian / Alaskan Native	0	0%	
Asian / Pacific Islander	6	4%	
Hispanic	1	1%	
International	0	0%	
White	12	9%	
Race/Ethnicity Unknown	0	0%	
Geographic Distribution (Degree-Seeking)			
Tennessee			61%
Other US States & Territories			36%
Other Countries			3%
Age (Degree-Seeking)			
Average Age			23.23
Percent of Undergraduates Age 25 or Older			25%

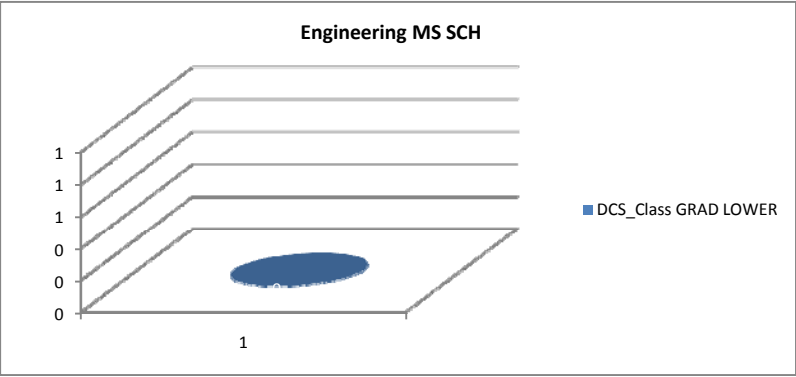


NOTICE: Data Sources: SIS Batch Reports; Banner Scripts & Query Reports; 2008-2009 Budget Summary. This data portrait, prepared by the Office of Institutional Effectiveness, Quality & Assessment, is for internal use only by TSU.

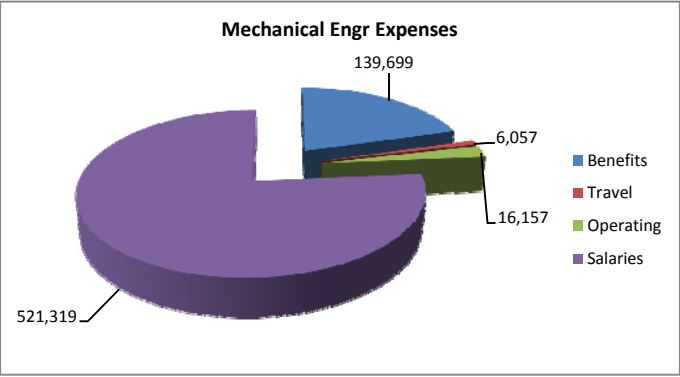
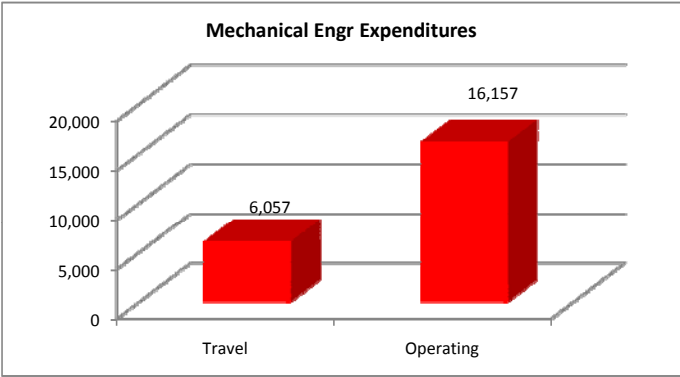
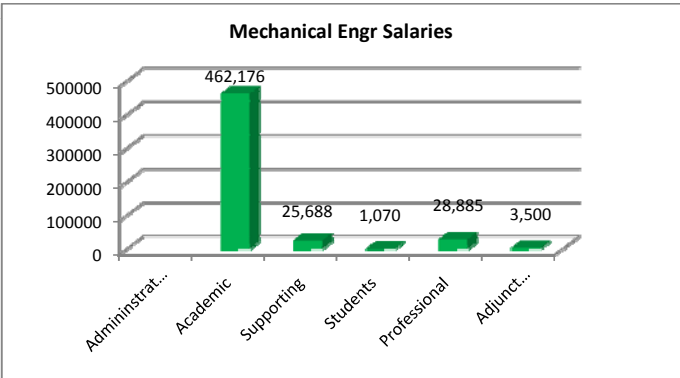
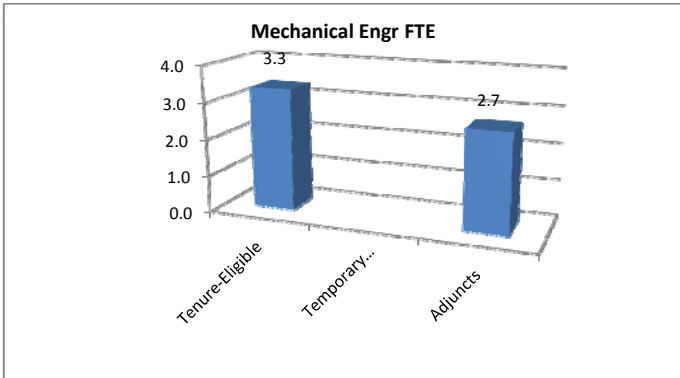
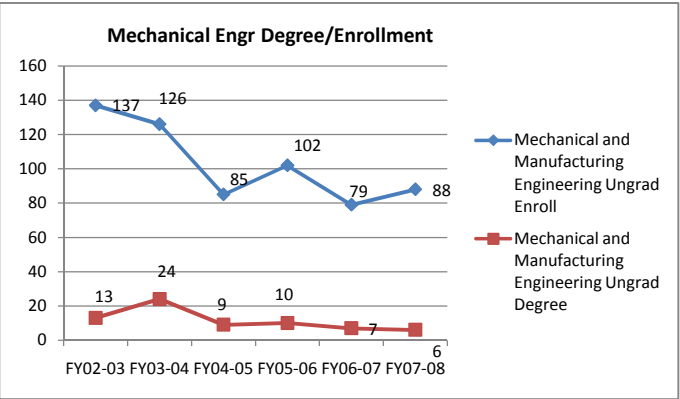


1. Total Headcount faculty (Fall 2007)	26.0
2. Total FTE Faculty (Fall 2007)	6.2
3. Tenured/tenure eligible faculty as % of total instructional faculty (Fall 2007)	73%
4. FTE students taught (Fall 2007)	54.9
5. Total Expenditures Electrical Engineering	\$ 852,220.00
6. Direct instructional expenditure per SCH	\$ 580.00
7. Direct instructional expenditure per FTE student	\$ 14,471.00
8. Personnel cost as percent of direct instructional ex	96%

UNDERGRADUATE PROFILE		Undegrad
Total		136
Gender		
Women	30	22%
Men	106	78%
Race/Ethnicity		
African American / Black	117	86%
American Indian / Alaskan Native	0	0%
Asian / Pacific Islander	6	4%
Hispanic	1	1%
International	0	0%
White	12	9%
Race/Ethnicity Unknown	0	0%
Geographic Distribution (Degree-Seeking)		
Tennessee		61%
Other US States & Territories		36%
Other Countries		3%
Age (Degree-Seeking)		
Average Age		23.23
Percent of Undergraduates Age 25 or Older		25%

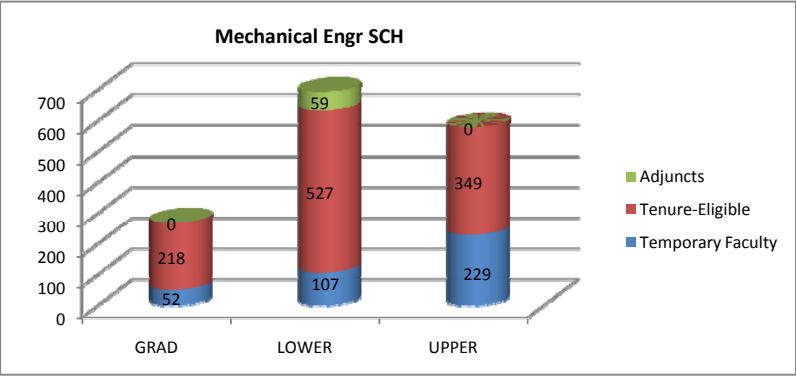


NOTICE: Data Sources: SIS Batch Reports; Banner Scripts & Query Reports; 2008-2009 Budget Summary. This data portrait, prepared by the Office of Institutional Effectiveness, Quality & Assessment, is for internal use only by TSU.



1. Total Headcount faculty (Fall 2007)	11.0
2. Total FTE Faculty (Fall 2007)	6.0
3. Tenured/tenure eligible faculty as % of total instructional faculty (Fall 2007)	57%
4. FTE students taught (Fall 2007)	60.8
5. Total Expenditures Mechanical Engr	\$ 683,232.00
6. Direct instructional expenditure per SCH	\$ 410.00
7. Direct instructional expenditure per FTE student	\$ 10,899.00
8. Personnel cost as percent of direct instructional ex	98%

UNDERGRADUATE PROFILE		
Total	88	
Gender		
Women	15	17%
Men	73	83%
Race/Ethnicity		
African American / Black	71	81%
American Indian / Alaskan Native	0	0%
Asian / Pacific Islander	3	3%
Hispanic	0	0%
International	0	0%
White	14	16%
Race/Ethnicity Unknown	0	0%
Geographic Distribution (Degree-Seeking)		
Tennessee	57%	
Other US States & Territories	42%	
Other Countries	1%	
Age (Degree-Seeking)		
Average Age	22.66	
Percent of Undergraduates Age 25 or Older	26%	



NOTICE: Data Sources: SIS Batch Reports; Banner Scripts & Query Reports; 2008-2009 Budget Summary. This data portrait, prepared by the Office of Institutional Effectiveness, Quality & Assessment, is for internal use only by TSU.