

Tennessean

1949



Contents

T H E S C H O O L

A D M I N I S T R A T I O N

C L A S S E S

D I V I S I O N S

A T H L E T I C S

O R G A N I Z A T I O N S

F E A T U R E S

The 1949

Tennessean

Published by the Students of

TENNESSEE A. & I. STATE COLLEGE

NASHVILLE, TENNESSEE

Dedication

The nineteen hundred forty-nine edition of THE TENNESSEAN is reverently dedicated to those members of the College Staff who have rendered invaluable service to the College for at least twenty years and have never previously had an edition dedicated to them.



ELIZA J. VERNON
B.S., Tennessee State College
College Bookkeeper



MERL R. EPPSE
M.A., Columbia University
*Director of the Division of History
and Geography*



FRANCES E. THOMPSON
M.A., Harvard-Radcliffe
Professor of Art



PEARL W. GORE
B.S., Tennessee State College
*Financial Adviser to Veterans,
Supervisor of Student Aid,
Alumni Secretary*



FRANCES A. SANDERS
M.A., Columbia University
Professor of Elementary Education















TO OUR PRESIDENT . . .

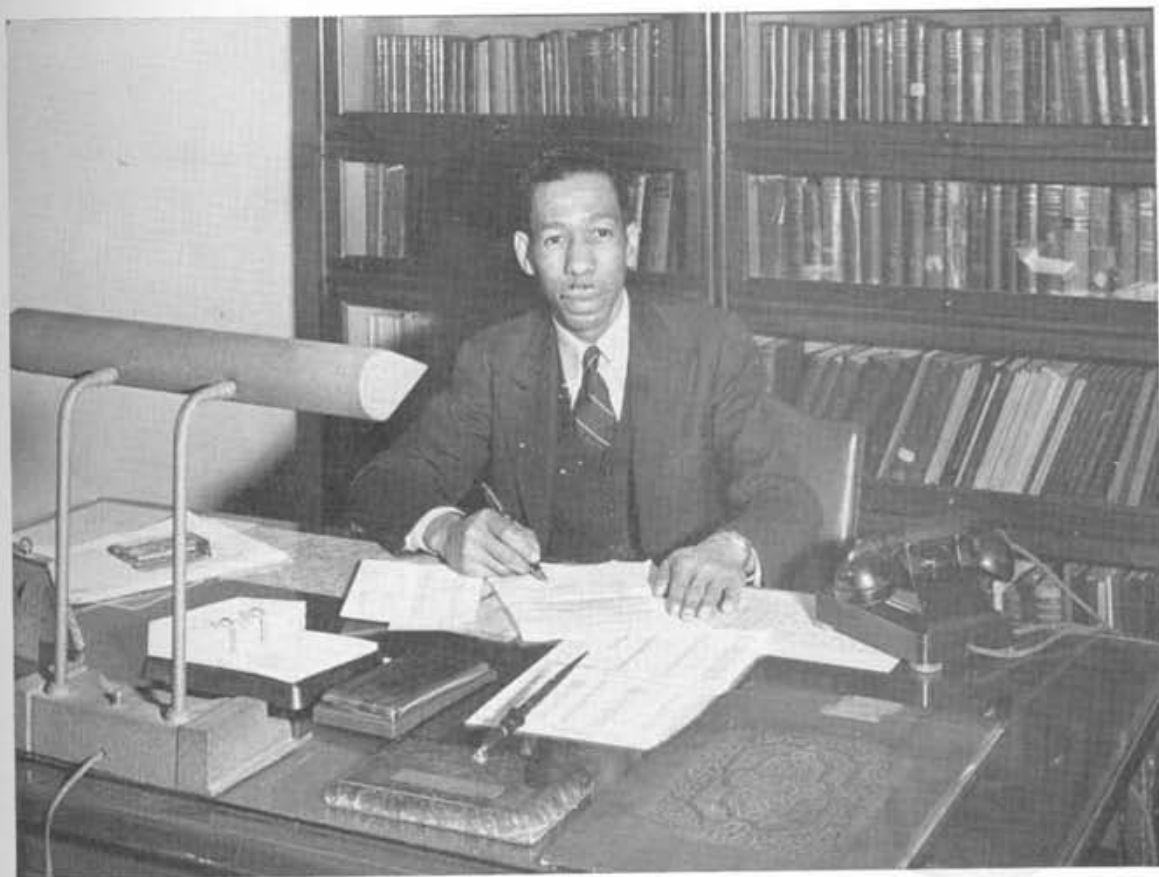
Tennessee State College is indeed fortunate to have at its helm Dr. Walter Strother Davis. Upon assuming the responsibility of president of the College in 1943, Dr. Davis announced plans for the expansion and development of the institution. The advancement of this program can be described as nothing less than miraculous: faculty improved in quality and number, building program expanded, equipment and facilities improved, student body enlarged, curriculum expanded and advanced. In fact every area of the institution has been advanced to meet the challenge of one of America's leading colleges.

In recognition of this fact his personal integrity and high calibre of performance in the service of humanity are not only acclaimed by students and faculty, but by educators and other leading citizens of the State and nation.

Dr. Davis is uniquely characterized by his professional attitude toward every individual, his rational procedure in handling problems, his intense concern with the business of promoting the cause to which he has dedicated his life, that is, the work of building a better civilization by developing men and women who can and will make maximum contribution toward this end.

The philosophical advice given in his "fireside chats" and special chapel talks to the "College family" will be among the cherished memories every student will take with him in an attempt to unravel confronting perplexities and to evolve a satisfying way of life.

THE PRESIDENT



TO OUR DEAN . . .

"If you ask me who is the best dean in all colleges, I would tell you Dean G. W. Gore, Jr.," is the oft repeated statement made by President Davis.

Dr. Gore is a man of limitless endurance and vitality. When one remarks that he does not have time to do this or that, the Dean retorts that he has time to spare. This anecdotal reference describes the zealous spirit and determined purpose to fill every minute with sixty golden seconds which he efficiently succeeds in doing.

His ability to execute successfully the many duties of the office of Dean of the College and Director of the Graduate Division is the reflection of the scholar and conscientious man that he is.

With keen and personal concern for high scholarship achievement, Dr. Gore has served as adviser for Phi Beta Tau Chapter of Alpha Kappa Mu, national honor society, since its inauguration on the campus.

T H E D E A N



DIRECTORS OF DIVISIONS *and*

WALTER A. FLOWERS, M.S.

Director of the Division of Agriculture



LEWIS R. HOLLAND, M.C.S.

*Acting Director of the Division of Business Administration
and Business Education*



OLIVE W. CRUMP, Ed.D.

Director of the Division of Education



BENSON L. DUTTON, B.S.

*Director of the Division of Engineering and
Industrial Education*

OFFICERS OF THE ADMINISTRATION

MERL R. EPPSE, M.A.

Director of the Division of History and Geography



ERNA B. JONES, M.S.

Director of the Division of Home Economics



THOMAS E. POAG, Ph.D.

Director of the Division of Humanities



JEROME H. HOLLAND, M.S.

Director of the Division of Political and Social Science





HUBERT B. CROUCH, Ph.D.

Director of the Division of Science



VIRGINIA S. NYABONGO, Ph.D.

Student Personnel Director



EDNA R. HANKAL, A.B.

Dean of Women



W. K. FOX, B.S., B.D.

Dean of Men

EARL L. SASSER, Ph.D.

Registrar



LOIS H. DANIEL, M.A.

Librarian



S. H. FREEMAN, M.D.

Director of Student Health



E. P. JOHNSON, B.S.

Bursar



ADMINISTRATIVE COUNCIL



The Administrative Council is a Standing Committee composed of the president, Dr. W. S. Davis; the dean, Dr. G. W. Gore, Jr.; and three faculty members at large, Dr. H. B. Crouch, Mr. A. V. Boswell, and Mrs. A. D. Jones, secretary.

EXECUTIVE COMMITTEE



The Executive Committee is composed of the President, Dean of the College, members of the Administrative Council, Directors of Divisions, Heads of Departments, Registrar, Director of Student Personnel, Director of Veterans Affairs, Dean of Men and Dean of Women. It functions in an advisory capacity in matters pertaining to the academic program of the college. Officers: President W. S. Davis, Chairman; Dean George W. Gore, Jr., First Vice-Chairman; Mr. A. V. Boswell, Second Vice-Chairman; Miss Lois H. Daniel, Secretary.

TENNESSEAN STAFF

STUDENTS

MR. GILBERT R. MASON	Editor-in-Chief	MISS DAVE HENRI FONNEY	Editing
MR. WILLIAM LAWSON	Associate Editor and Art Editor	MR. ROBERT JACKSON	
MR. JOSEPH WILLIAMS	Business Manager	Athletics; Representative of Senior Class	
MR. EDGAR GUINN	Associate Art Editor	MR. RALPH MULLINS	
MISS JEANNINE ALLISON	Feature Editor	Representative of Senior Class; Athletics	
MR. SAMUEL YETTE	Feature Editor	MR. WILLIAM SCOTT	Representative of Senior Class
MISS BETTYE COLEY	Representative of Junior Class	MR. WILLIAM STINSON	Representative of Junior Class
MISS HELEN M. DUMAS	Secretary	MISS BARBARA WALTON	Representative of Junior Class
MR. RALPH GILL	Representative of Junior Class	MISS EVELYN V. WATTS	Editing
MISS MARY GUDGER	Representative of Graduate Students	MRS. VIVIAN WHITSON	Typist

FACULTY ADVISERS

DR. GEORGE W. GORE, JR.	Chairman	MR. LEWIS HOLLAND	Business
MRS. MARY F. CARTER	Secretary; Photography	MISS MARTHA HURSEY	Photography
MRS. SABRA S. CONNER	Assistant Secretary	DR. ELSIE LEWIS	Sponsor of Senior Class
MISS LOIS DANIEL	Treasurer; Editing	MRS. ALMA DUNN JONES	Editing
MR. MERL EPPSE	Junior Class Sponsor	MRS. MARY CLAY PINKSTON	Editing
MRS. MILDRED GAINES	Photography; Business	MISS FRANCES E. THOMPSON	
MRS. MARY E. HILL	Photography	Art and Features, and Photography	

The 1949 TENNESSEAN is the result of the efforts of the Yearbook Staff to produce a publication with the high standards characteristic of A. and I. College.

To all who contributed in any way to the success of this Yearbook is extended our deep appreciation.



GRADUATE

MARTHA MOSLEY ALLEN
NASHVILLE, TENNESSEE

Zoology

Beta Kappa Chi, Delta Sigma Theta,
Biology Club.



DIVISION

GROVER C. BROOKS
NASHVILLE, TENNESSEE

Agriculture

ROBERT L. EVERETTE

1401 Heiman Street
NASHVILLE, TENNESSEE

Business Administration

Future Business Leaders of America.



KELLEY L. B. MADDUX

NASHVILLE, TENNESSEE

History

History Study Club.

WILLARD C. JORDAN

FAYETTEVILLE, NORTH CAROLINA

Zoology



ELBERT P. WALKER

NEW YORK, NEW YORK

Industrial Education

Kappa Alpha Psi.

ROBERT A. WALKER

DARLINGTON, SOUTH CAROLINA

Chemistry

Omega Psi Phi.



SENIOR CLASS

ROBERT R. AARON
DAWSON, GEORGIA

English

Botanical Field Club (President),
Humanities Club (President), Lam-
podos Pledge Club (Parliamentarian).

WILLIAM A. ADKINS, JR.
NASHVILLE, TENNESSEE

Health and Physical Education

Omega Psi Phi Fraternity, Tennessee
State Players' Guild.

VERA JEANNINE ALLISON
JOHNSON CITY, TENNESSEE

Social Administration

Alpha Kappa Alpha (Anti-Basileus),
Alpha Kappa Mu (Secretary), Laicos
S Ronoh Honor Society (President),
Lambda Eta Sigma, Collegiate Coun-
sellors (President), Players' Guild
(Secretary), Sunday School (Secre-
tary), Inter-Fraternal Council (Secre-
tary), Student Christian Association
(Program Chairman), Baptist Student
Union, Town Hall Association.

MARGARET LORRAINE ANDREWS
WEST BIRMINGHAM, ALABAMA

Business Education

Student Christian Association, Baptist
Student Union, Future Business Lead-
ers of America.

JOHN W. ARMSTEAD
BIRMINGHAM, ALABAMA

Biology

Alpha Phi Alpha (Treasurer), Beta
Kappa Chi (President), Biology Club
(Vice-President), Tennessee State Col-
legians.

HATTIE LENE ARVIN
MADISONVILLE, KENTUCKY

Elementary Education

Elementary Education Club, Zeta Phi
Beta.

HAZEL CATHERINE AUSTIN
LAUREL, MISSISSIPPI

Business Education

Future Business Leaders of America.

THELMA LOUISE BAKER
MEMPHIS, TENNESSEE

Business Education

Alpha Kappa Alpha (Grammateus),
Student Council (Secretary), Lambda
Eta Sigma, Future Business Leaders
of America, Sunday School Cabinet
(Assistant Secretary).

JOSEPH B. BATES
MCMINNVILLE, TENNESSEE

Mathematics

The Mathematics Club, Alpha Phi
Alpha, Member of Program Com-
mittee Senior Class.

LOUIS VANDER BIOUS
NASHVILLE, TENNESSEE

Health and Physical Education

Delta Sigma Theta, Alpha Kappa
Mu, Health and Physical Education
Club (Secretary).



S E N I O R C L A S S

TOP ROW

CAROLINE LUELLEN BLANTON
CHATTANOOGA, TENNESSEE

Music

Alpha Kappa Alpha, Newman Club
(Treasurer), Concert Singers.

ALFRED FREEMAN BONNER, JR.
TUSCUMBIA, ALABAMA

Industrial Education

Industrial Education and Engineering
Club (President), American Veterans
Committee (Chairman), Col-
legiate Council.

ELLA JANE BRANDON
MURFREESBORO, TENNESSEE

Mathematics

Wilson Hall Better Dormitory Club,
Mathematics Club (Secretary).

HELEN LOUISE BRANDON
COLUMBIA, TENNESSEE

Elementary Education

Elementary Education Club.

LUCILLE MCGOWAN BRANDON
NASHVILLE, TENNESSEE

Elementary Education

Elementary Education Club, Psy-
chology Club.

SECOND ROW

TURNER E. BROWN
ST. LOUIS, MISSOURI

Business Administration

Alpha Phi Alpha, Newman Club,
Future Business Leaders of America.

GERTRUDE WILKES CALLIER
NASHVILLE, TENNESSEE

English

Alpha Kappa Mu, Delta Sigma
Theta, Tennessee State Players'
Guild, Humanities Club, English
Club.

KATHRYN HALE CAMPBELL
NASHVILLE, TENNESSEE

Business Education

Future Business Leaders of America,
Tennessee State Players' Guild, Psy-
chology Club (Assistant Secretary).

CLAUDIA BEATRICE CAMPBELL
MEMPHIS, TENNESSEE

Home Economics

Home Economics Club (Chairman of
Social Committee), Baptist Student
Union.

FLETCHER SARVER CANTRELL
NASHVILLE, TENNESSEE

Agricultural Education

New Farmers of America, Scrollers
Club.



SENIOR CLASS

ERNEST JULIUS CARPENTER
NEW YORK, NEW YORK
Business Administration
Omega Psi Phi.

BIRDIE MAE CLARK
NASHVILLE, TENNESSEE
Elementary Education
Elementary Education Club, Student
Christian Association.



JOSEPH A. GOACKLEY
GALLATIN, TENNESSEE
Elementary Education
Elementary Education Club.

BOYCE EURLINE COUGH
MEMPHIS, TENNESSEE
Elementary Education
Delta Sigma Theta (Parliamentarian),
Inter-Fraternal Council, American
Childhood Education Association,
Elementary Education Club, History
Study Club, Baptist Student Union.



WILLIE C. COWAN
GALLATIN, TENNESSEE
Elementary Education
Elementary Education Club.

JAMES EDWARD COX
HOLLEY SPRINGS, MISSISSIPPI
Agricultural Education
Phi Beta Sigma, New Farmers of
America.



ANNIE MAE CROSS
SPRINGFIELD, TENNESSEE
Home Economics
Home Economics Club.

SURLEASTER CROWDER
WHITEVILLE, TENNESSEE
Elementary Education
Elementary Education Club, Chair-
man of the Lookout Committee,
Student Christian Association.



CLARENCE CRUTCHFIELD
LEBANON, TENNESSEE
Physical Education
Kappa Alpha Psi (Vice Polemarch),
Physical Education Club (President),
Inter-Fraternal Council.

MAFALDA SLOAN DAVIDSON
NASHVILLE, TENNESSEE
Sociology



SENIOR CLASS

TOP ROW

ALICE WILLS DAVIS
MEMPHIS, TENNESSEE
Business Administration
Delta Sigma Theta.

ERNEST DAVIS
OKLAHOMA CITY, OKLAHOMA
*Building and Construction
Engineering*

Alpha Phi Alpha, Engineering and Industrial Education Club, National Technical Association (Chairman), Aviation Club (Vice-President), Sunday School Cabinet, Basketball Team.

HELEN LOUISE DAVIS
NASHVILLE, TENNESSEE
Sociology
Lairds S Ronoh, Aurora Club (Secretary).

HERBERT DAWSON
MT. PLEASANT, TENNESSEE
History

History Study Club, Better Dormitory Club.

JAMES WILSON DELAPP
TRENTON, TENNESSEE
Business Administration

Future Business Leaders of America.

SECOND ROW

LILLIE BELLE DIXON
NASHVILLE, TENNESSEE
Home Economics
Home Economics Club.

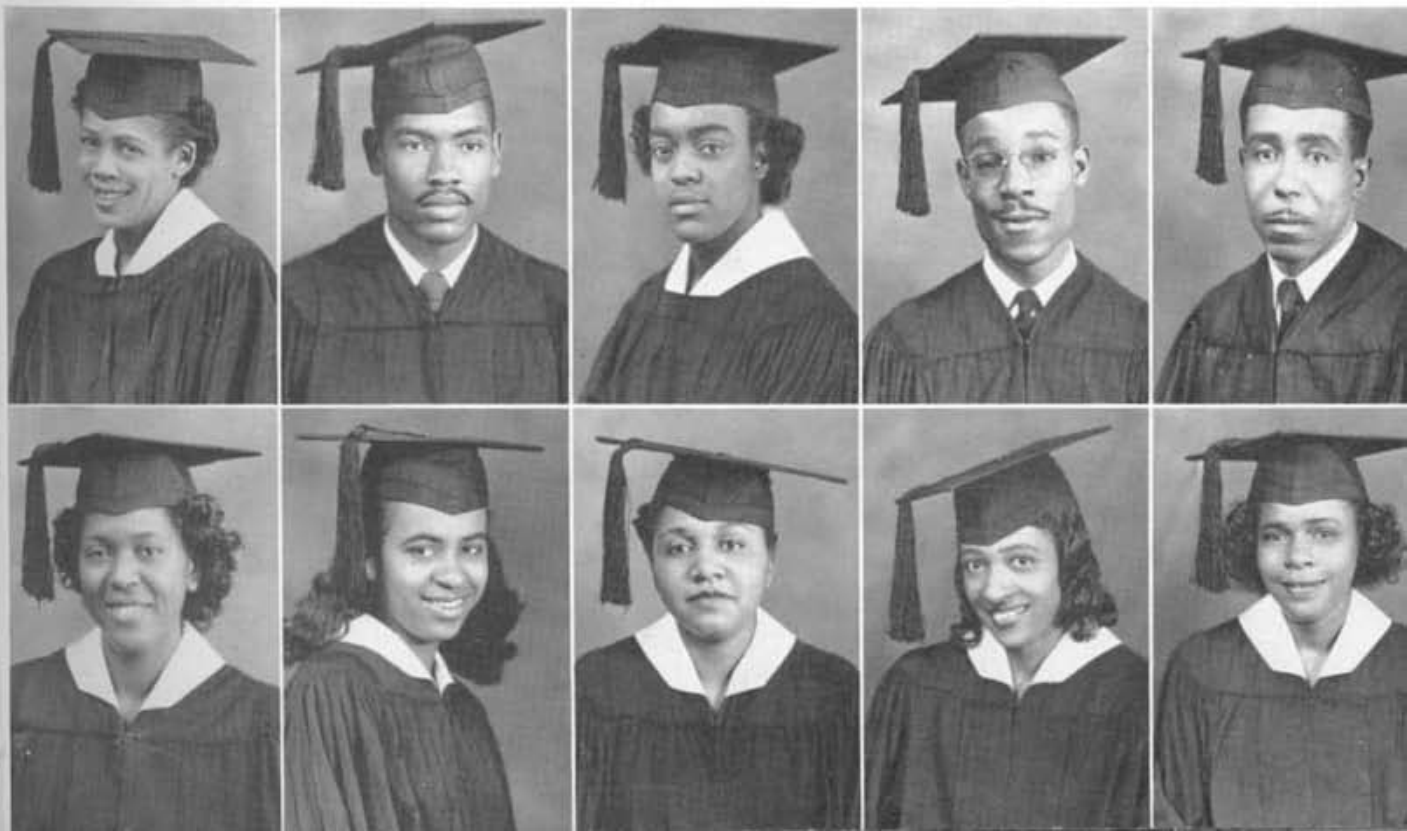
HELEN MARGUERITE DUMAS
NASHVILLE, TENNESSEE
Social Administration

Alpha Kappa Alpha (Sentinel), Alpha Kappa Mu, Lambda Eta Sigma (President), TENNESSEAN Yearbook Staff, (Secretary), Collegiate Counselors (Secretary).

MARY LOUISE DUNN
SPRINGFIELD, TENNESSEE
Business Education
Future Business Leaders of America, Baptist Student Union.

GWENDOLYN OLIVIA DUNNINGS
NASHVILLE, TENNESSEE
Business Education
Future Business Leaders of America.

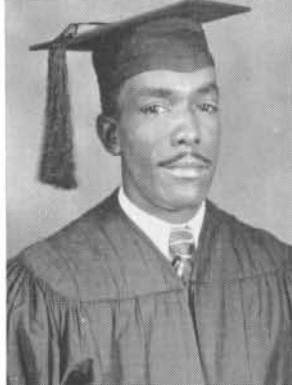
LILLIAN V. EULIN
MIAMI, FLORIDA
Home Economics
Home Economics Club, Newman Club.



SENIOR CLASS

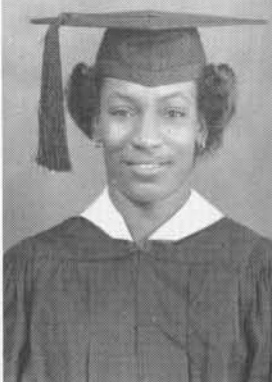
HORACE ATKINSON FALLS
 SPRINGFIELD, TENNESSEE
Natural Science

RUTH THOMAS FORDE
 NASHVILLE, TENNESSEE
Elementary Education
 Elementary Education Club.



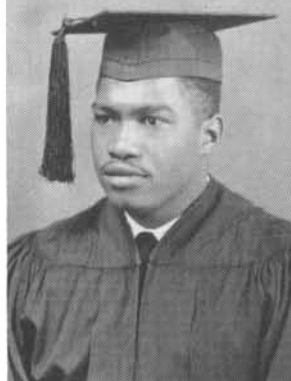
THOMAS SARAH PEYTON FLUDD
 NASHVILLE, TENNESSEE
Music
 College Choir, Meistersingers.

DOLORES V. FRANK
 NASHVILLE, TENNESSEE
Biology
 Biology Club.



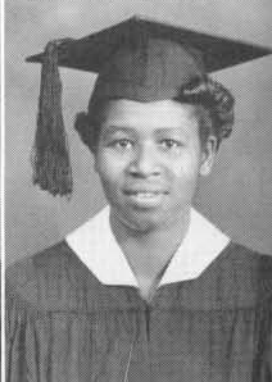
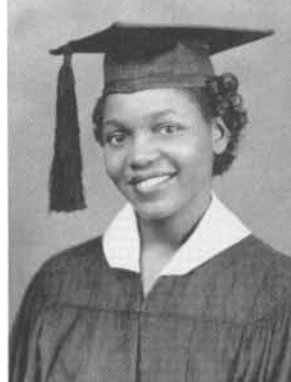
EARNEST FRANKLIN
 JACKSON, MISSISSIPPI
Health and Physical Education
 Phi Beta Sigma (Dean of Pledges),
 Health and Physical Education Club.

DAVE HENRI FONNEY
 MEMPHIS, TENNESSEE
Business Administration
 Alpha Kappa Alpha (Basileus),
 Lambda Eta Sigma, Sunday School
 Cabinet, Yearbook Staff, Inter-Fra-
 ternal Council, Future Business Lead-
 ers of America, Senior Class (Secre-
 tary).



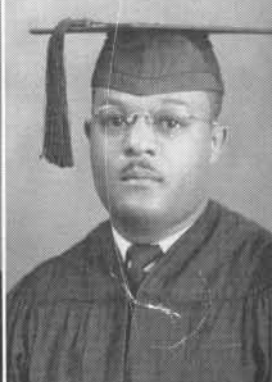
VELMA LOUISE FOYE
 CHATTANOOGA, TENNESSEE
Business Education
 Choir, Newman Club (Secretary),
 Future Business Leaders of America.

JUANITA IREAN GILL
 NASHVILLE, TENNESSEE
History
 History Study Club, Junior Librarian.



PEARL MAYO GORE
 NASHVILLE, TENNESSEE
Psychology
 Psychology Club (President), Alpha
 Kappa Alpha, Tennessee State Players'
 Guild (Publicity Manager), Lambda
 Eta Sigma (Dean of Pledges), Alpha
 Kappa Mu (Reporter), Collegiate
 Counselor.

CLEMENT HENRY GRANT
 CHICAGO, ILLINOIS
Biology
 Lampados Club, Biology Club.



S E N I O R C L A S S

TOP ROW

ESSIE MARGENTINA GREENE
MEMPHIS, TENNESSEE
Business Education

HARRIS GRAHAM GRISBY
NASHVILLE, TENNESSEE
Physical Education
Scrollers Club, Physical Education
Club.

MARY LANDIS GRISBY
NASHVILLE, TENNESSEE
Elementary Education
Elementary Education Club.

LEON H. GRIFFIN
NASHVILLE, TENNESSEE
Agriculture
Phi Beta Sigma, Botanical Club, New
Farmers of America.

ESTHER BEATRICE HARRIS
BOLIVAR, TENNESSEE
Business Education
Student Christian Association, Future
Business Leaders of America, Baptist
Student Union.

SECOND ROW

VELMA CANADA HARRISON
NASHVILLE, TENNESSEE
Elementary Education
Elementary Education Club.

MARY BANKS HART
NASHVILLE, TENNESSEE
Elementary Education
Elementary Education Club.

MATTIE RUTH G. HASTON
NASHVILLE, TENNESSEE
Elementary Education
Choir, Elementary Education Club,
Sigma Gamma Rho (Grammateus).

IRENE VALERA HENRY
NASHVILLE, TENNESSEE
Business Education
Alpha Kappa Mu, Future Business
Leaders of America.

LORENE HICKERSON
MANCHESTER, TENNESSEE
Business Education
Future Business Leaders of America.



SENIOR CLASS

MARY LOUISE HILL
NASHVILLE, TENNESSEE
Business Education

ELAINE HIX
SHELBYVILLE, TENNESSEE
Business Education
Future Business Leaders of America.



ROBERT THOMAS HODGE
NASHVILLE, TENNESSEE
Music

Meistersingers, College Choir, College Band.

NATHANIEL HOLLOWAY
MEMPHIS, TENNESSEE
Chemistry

Alpha Phi Alpha, Beta Kappa Chi, Chemistry Club, Baptist Student Union.



ELLA EDITH HOLMES
MEMPHIS, TENNESSEE
Chemistry

Zeta Phi Beta (Treasurer), Collegiate Counselor, Sunday School Cabinet, Chemistry Club.

RAE ERNESTINE HUDSON
NASHVILLE, TENNESSEE
Elementary Education
Elementary Education Club (President).



REBECCA JEANNE HUNT
ARLINGTON, VIRGINIA
Home Economics

Home Economics Club, Student Christian Association.

LEMUEL JOSEPH HUTCH
CEDAR GROVE, TENNESSEE
Agriculture
Alpha Phi Alpha, New Farmers of America.



ELIZABETH ROGERS HYATT
KNOXVILLE, TENNESSEE
Elementary Education

Los Buenos Vecinos, Student Christian Association, Elementary Education Club.

HERMAN WILBERT HYATT
CLEVELAND, TENNESSEE
Pre-Medicine

Alpha Phi Alpha, Alpha Kappa Mu, Beta Kappa Chi (Vice-President), Student Council (Vice-President), Los Buenos Vecinos (President).



SENIOR CLASS

TOP ROW

MILDRED LOUISE HYDE
NASHVILLE, TENNESSEE
Elementary Education

FLORA MAE INGRAM
OPELIKA, ALABAMA
Business Education

Alpha Kappa Alpha, Future Business Leaders of America, Student Council, Student Christian Association, Sunday School Cabinet.

ANDREW JACKSON
MONTGOMERY, ALABAMA
Business Administration

Alpha Phi Alpha, Future Business Leaders of America (Reporter).

ROBERT LEWIS JACKSON
HUNTSVILLE, ALABAMA
Mathematics

Beta Omicron Chapter, Alpha Phi Alpha (President), Alpha Kappa Mu (President), Mathematics Club (President).

JOHN AUSTIN JAMES, JR.
PASCAGOULA, MISSISSIPPI
Natural Science

SECOND ROW

DOROTHY DEAN JARRETT
LEBANON, TENNESSEE
Home Economics

Alpha Kappa Alpha, Collegiate Counselors, Home Economics Club, Student Christian Association, Alpha Kappa Mu (Assistant Secretary).

JUDIA WASHINGTON JARVIES
COVINGTON, TENNESSEE
Elementary Education

Elementary Education Club, Alpha Kappa Alpha.

CATHERINE PATRICK JOHNSON
JACKSON, TENNESSEE
Music and Fine Arts

Choir.

M. MOZENIA JOHNSON
JOHNSON CITY, TENNESSEE
Business Education

Future Business Leaders of America, Baptist Student Union.

VIOLA DORIS JOLLEY
LUCY, TENNESSEE
Home Economics

Home Economics Club.



SENIOR CLASS

CORNELIUS JONES
HARLAN, KENTUCKY

History and Government

History Study Club, Town Hall,
Phi Beta Sigma, Varsity Football.

LAURA ALMEADA JONES
ADAMS, TENNESSEE

Business Education

Archonian Club, Future Business
Leaders of America.



ALONZO BISMARCK JORDAN
NASHVILLE, TENNESSEE

Agricultural Education

New Farmers of America, Crescent
Club (Treasurer).

EBEN F. KING

OWENSBORO, KENTUCKY

Agricultural Education

Phi Beta Sigma (Vice-President).



KATIE LOUISE KNIGHT
NASHVILLE, TENNESSEE

Sociology

Spanish Club, History Study Club,
College Choir, Laicos S Ronoh.

EDWARD THOMAS LAPRADE
HOPKINSVILLE, KENTUCKY

Business Administration

Phi Beta Sigma (Treasurer), Col-
legiate Counselors, Inter-Fraternal
Council (Vice-President), Alpha
Kappa Mu, Future Business Leaders
of America.



GILBERT RUTLEDGE MASON
JACKSON, MISSISSIPPI

Chemistry

Senior Class (President), Alpha Kappa
Mu (Vice-President), Beta Kappa Chi,
Lambda Eta Sigma, Sunday School
(First Assistant Superintendent).

WILLIS ALLEN MCCALLISTER
METROPOLIS, ILLINOIS

Music

Alpha Kappa Mu, Quill Club, Col-
lege Choir, Meistersingers.



BERNICE MCFADDEN
LYNCHBURG, SOUTH CAROLINA

Biology

Delta Sigma Theta (Custodian and
Sergeant-at-Arms), Biology Club.

ERNESTINE HOWELL MCFERREN
SOMERVILLE, TENNESSEE

Home Economics

Home Economics Club.



SENIOR CLASS

TOP ROW

ROBERT LEE McFERREN
SOMERVILLE, TENNESSEE

Agricultural Education

Alpha Phi Alpha, New Farmers of America (Business Manager).

NELLIS GENEVA MCKINLEY
NASHVILLE, TENNESSEE

Business Education

RUBY G. MCKINNIE
BOLIVAR, TENNESSEE

Elementary Education

Elementary Education Club (Secretary), Student Christian Association.

ANNIE DOUGLAS MITCHELL
NASHVILLE, TENNESSEE

Home Economics

Student Christian Association, New Homemakers of America, Home Economics Club.

FLORA JANET MORGAN
JACKSON, TENNESSEE

Social Administration

Political and Social Science Club, Student Christian Association.

SECOND ROW

RALPH MULLINS
KINGSPORT, TENNESSEE

History

Alpha Phi Alpha, History Study Club (Vice-President), Student Christian Association.

SALLIE MAE MURDOCK
OBION, TENNESSEE

Elementary Education

Elementary Education Club.

O'FERRELL VALENTINE NELSON
MEMPHIS, TENNESSEE

Speech and Drama

Tennessee State Players' Guild (President), Omega Psi Phi, Humanities Club, Choir, Concert Singers, Junior Counselors, Male Chorus, Spanish Club.

DAVID BENJAMIN NEWBORN
JACKSON, TENNESSEE

Music and Art

School Choir, Men's Glee Club, Sphinx Club, Student Christian Association.

EVELYN LUCILLE NEWTON
NASHVILLE, TENNESSEE

Home Economics

Zeta Phi Beta (Assistant Secretary), Home Economics Club.



SENIOR CLASS

ALGIE SIDNEY OLDHAM, JR.
DYERSBURG, TENNESSEE

History

Kappa Alpha Psi (Chaplain), Senior Class (Treasurer), History Study Club, Collegiate Counselors, Student Christian Association.

JOHN ANTHONY OUTLAND
BOLIGEE, ALABAMA

History

History Study Club, Baptist Student Union (Treasurer), Student Christian Association, Spanish Club, Omega Psi Phi.



GERALDINE FAIR PARKER
NASHVILLE, TENNESSEE

Business Administration

Future Business Leaders of America.

ROSA LEE PARKER
BIRMINGHAM, ALABAMA

History and Geography

History Study Club, Delta Sigma Theta, Spanish Club.



HELEN FRANCES PARRISH
NASHVILLE, TENNESSEE

Natural Science

Biology Club, Sigma Gamma Rho (Treasurer).

GEORGE BERNETT PATTERSON
FLORENCE, ALABAMA

Agricultural Education

Alpha Phi Alpha, Student Christian Association, New Farmers of America, American Society of Agronomy.



JOHNETTA CHRISTINE POWELL
NASHVILLE, TENNESSEE

Business Education

JOSEPHINE MINERVA J. PRUITT
MURFREESBORO, TENNESSEE

English

Players' Guild, Humanities Club (Chaplain).



LILLIAN OPHELIA PULCE
MT. PLEASANT, TENNESSEE

Elementary Education

Elementary Education Club, Players' Guild.

EMMA REED
REDWOOD, MISSISSIPPI

Health and Physical Education

Physical Education Club, Basketball Team, Track Team, Delta Sigma Theta.



S E N I O R C L A S S

TOP ROW

EMMITT WALLACE REEVES
CLARKSVILLE, TENNESSEE

Business Administration

College Choir, Concert Singers, Collegiate Counselors, Band, Future Business Leaders of America, Quill Club.

ALFREDETTA MONELLE REID
TUSKEGEE INSTITUTE, ALABAMA

Business Education

JUSTINE EDWINA RIDLEY
NASHVILLE, TENNESSEE

Social Administration

Alpha Kappa Alpha, Lambda Eta Sigma.

CATHRYN ELIZABETH RIVERS
MEMPHIS, TENNESSEE

English

Alpha Kappa Alpha (Parliamentarian), Lambda Eta Sigma, Collegiate Counselors (Program Director), Sunday School (Pianist), Baptist Student Union (Pianist), Players' Guild, Student Christian Association (Pianist).

ROBERT HENRY ROANE
MUSKOGEE, OKLAHOMA

History and Government

Town Hall (President), Kappa Alpha Psi (Journalist), Usher Board (President), Student Council.

SECOND ROW

MARGARET VIRGINIA ROBERTS
NASHVILLE, TENNESSEE

Elementary Education

MARIE BRIGHT RODDY
CHATTANOOGA, TENNESSEE

Elementary Education

Elementary Education Club, Sigma Gamma Rho.

DORSEY GARFIELD ROSE
NASHVILLE, TENNESSEE

Business Administration

Future Business Leaders of America.

ELIZABETH CATHERINE ROSS
PONTIAC, MICHIGAN

Home Economics

Home Economics Club (Treasurer), Delta Sigma Theta (Treasurer), Senior Class (Assistant Secretary).

JEWEL ETHEL ROWAN
MCMINNVILLE, TENNESSEE

Business Education

Future Business Leaders of America.



SENIOR CLASS

JOSEPH W. RUCKER
NATCHEZ, MISSISSIPPI
Natural Science

Omega Psi Phi (Vice-Basileus), Senior Class (Vice-President).

SCOTT SAUNDERS
MOSCOW, TENNESSEE
Agricultural Education

Alpha Phi Alpha, New Farmers of America, Student Christian Association.



WILLIAM MELVIN SCOTT
KNOXVILLE, TENNESSEE
Social Administration

Student Council (President), Kappa Alpha Psi (Polemarch), Players' Guild (Business Manager).

MARY ELLENA SHAW
CHATTANOOGA, TENNESSEE
Business Education

Future Business Leaders of America.



ALICE LOUISE SHEFFIELD
RAMER, TENNESSEE
Elementary Education
Elementary Education Club.

JUANITA LOUISE SHUTE
NASHVILLE, TENNESSEE
Business Education

Future Business Leaders of America.



ARVELLA T. SMITH
KNOXVILLE, TENNESSEE
Business Education

Psychology Club, Future Business Leaders of America.

ROBERT LEE SOUTHALL
MT. PLEASANT, TENNESSEE
Business Administration and Education

Collegiate Counselor (Chairman of Junior Counselors), Sphinx Club, Psychology Club (Vice-President), Town Hall Association, Student Christian Association, Quiet Hour, Sunday School, Lambda Eta Sigma, Future Business Leaders of America (Treasurer).



RUSSELL L. STOCKARD
NASHVILLE, TENNESSEE
History

History Study Club (President), International Relations Club (President), Alpha Phi Alpha.

JAMES WATSON STUBBS
MUSKOGEE, OKLAHOMA
Chemistry

Kappa Alpha Psi (Exchequer), Chemistry Seminar, Chemistry Club.



S E N I O R C L A S S

TOP ROW

WILLIAM ALBERT SUGGS
CAPLEVILLE, TENNESSEE
Agriculture

Phi Beta Sigma (President), Botanical Club, New Farmers of America (President), Student Christian Association.

CALVIN CLAUDE SUMMERS
NASHVILLE, TENNESSEE
Art and Music

History Study Club.

SELMA ELIZABETH TAYLOR
MIAMI, FLORIDA

Business Education

Future Business Leaders of America.

E. KIRBY TEAGUE
PARIS, TENNESSEE
Agricultural Education

BARBARA P. TEETER
ALCOA, TENNESSEE
Business Education

Future Business Leaders of America.

SECOND ROW

RICHARD HENRY TURK
KNOXVILLE, TENNESSEE
Natural Science

Omega Psi Phi, Biology Club.

ANNIE LEE VINSON
SHEFFIELD, ALABAMA
Elementary Education

Elementary Education Club.

MARY ELIZABETH WALTON
MCMINNVILLE, TENNESSEE
Elementary Education

Elementary Education Club, Sigma Gamma Rho.

RUTH EVELYN WATKINS
NASHVILLE, TENNESSEE
Elementary Education

Elementary Education Club.

DOROTHY ALICE WASHINGTON
NASHVILLE, TENNESSEE

Music

Archonian Club.



SENIOR CLASS

CELIA ROSE WATKINS
NASHVILLE, TENNESSEE
Elementary Education

Sigma Gamma Rho, Elementary Education Club.

EVELYN VIVIAN WATTS
PITTSBURGH, PENNSYLVANIA
Business Education

Student Christian Association, Alpha Kappa Alpha (Epistoleus), Future Business Leaders of America, Yearbook Staff, Sunday School Cabinet, Alpha Kappa Mu, Baptist Student Union (Second Vice-President), Collegiate Counselor.



EULA MAE WERTHING
LEXINGTON, TENNESSEE
Home Economics

Home Economics Club, Choir.

AUGUSTA LEE WHITLOW
JACKSON, TENNESSEE
Elementary Education

Collegiate Counselor, Playets' Guild, Elementary Education Club.



MILBRA JEAN WHITLOW
NASHVILLE, TENNESSEE
Home Economics

Home Economics Club (Secretary).

ALBERTA AGNES WILKINS
GALLATIN, TENNESSEE
Home Economics



ANNETTE WILLIAMS
MEMPHIS, TENNESSEE
Business Administration

Future Business Leaders of America.

ENOCH THEODORE WILLIAMS
MEMPHIS, TENNESSEE
Biology

Omega Psi Phi (Chaplain), Biology Club (President), Inter-Fraternal Council.



FRANKIE LAVERNE WILLIAMS
ROGERSVILLE, TENNESSEE
Home Economics

Home Economics Club (Chaplain), Student Christian Association.

MABEL AYERLEAN WILLIAMS
DYERSBURG, TENNESSEE
Elementary Education

Elementary Education Club, Alpha Kappa Alpha.



SENIOR CLASS

PEONIE ODESSA WILLIAMSON
SOMERVILLE, TENNESSEE
Physical Education
Physical Education Club.

BENJAMIN WINTERS
OLD HICKORY, TENNESSEE
History and Geography
History Study Club.

THOMAS EDWARD WOOD, JR.
BIRMINGHAM, ALABAMA
Political Science
Omega Psi Phi (Basileus), Student
Council, Inter-Fraternal Council,
Town Hall, Band, Orchestra.

JAMES CAROL WRIGHT
GALLATIN, TENNESSEE
History and Geography



JUNIOR

NAOMI SCOTT ADAMS
NASHVILLE, TENNESSEE
Business Education

Zeta Phi Beta (Dean of Pledges), Future Business Leaders of America, Inter-Fraternal Council (Treasurer).

DOROTHY MAE ARMSTRONG
TIPTON, TENNESSEE
Elementary Education

Elementary Education Club.

BOBBIE LOUISE BANFIELD
MEMPHIS, TENNESSEE
Elementary Education

Elementary Education Club.

MILDRED JUANITA BATTLE
NASHVILLE, TENNESSEE
Natural Science

JAMES BLAND
BOWLING GREEN, KENTUCKY
Biology
Alpha Phi Alpha, Interfraternal Council.

LANDIS EUGENE BOND
COLUMBIA, TENNESSEE
Agricultural Education

FRANCELLE L. BRIGGS
MEMPHIS, TENNESSEE
Home Economics
Alpha Kappa Alpha (Dean of Pledges).

MARION L. BYRD
UNION, SOUTH CAROLINA
Natural Science
Biology Club, French Club.



CLASSES

ROY L. ALLEN
CLARKSVILLE, TENNESSEE
Business Administration
Future Business Leaders of America.

JAMES EDWARD BAILEY
MEMPHIS, TENNESSEE
Industrial Education
Baptist Student Union (Treasurer), Crescent Club, Industrial Education Club.

FARLETTIA OCTAVIA BARKLEY
JOHNSON CITY, TENNESSEE
Business Administration
Baptist Student Union, Future Business Leaders of America, Ivy Leaf Club.

GWENDOLYN BLACKBURN
NASHVILLE, TENNESSEE
Business Education

FLORENCE BEATRICE BLOCKER
NASHVILLE, TENNESSEE
Elementary Education

MADLYN BREWER
SAN ANTONIO, TEXAS
Humanities
Alpha Kappa Alpha, Tennessee State Players' Guild.

ALVIN BROWN
SOMERVILLE, TENNESSEE
Health and Physical Education
Physical Education Club.

GAY CONSTANCE CARTER
CHATTANOOGA, TENNESSEE
Home Economics
Student Christian Association, Home Economics Club, Baptist Student Union.

JUNIOR

TENNIE MAI CARTER
NASHVILLE, TENNESSEE
Business Education
Future Business Leaders of America.

WILLIAM FOREST CORLEY
LEBANON, TENNESSEE
Agriculture
New Farmers of America.

HERBERT W. DEBERRY
DENMARK, TENNESSEE
History and Geography
History Study Club, Crescent Club.

ELESE P. EVANS
NASHVILLE, TENNESSEE
English
Alpha Kappa Alpha, Lambda Eta Sigma.

FLORENCE L. GAMMON
BRISTOL, TENNESSEE
Business Education
Delta Sigma Theta.

WILLIAM GILKEY
LITTLE ROCK, ARKANSAS
Pre-Dental
Alpha Phi Alpha.

EMMETT GOODMAN
COVINGTON, TENNESSEE
Elementary Education
Omega Psi Phi (Chapter Editor), Elementary Education Club (Vice-President).

EDGAR L. GUINN
HOT SPRINGS, ARKANSAS
Chemistry
Alpha Kappa Mu, Alpha Phi Alpha (Corresponding Secretary), Beta Kappa Chi.



CLASSES

VELEDIS EDWIN CARTER
PIKEVILLE, KENTUCKY
Music
Alpha Phi Alpha, Concert Singers.

ASHLEY BOYD CRAIG
MORRIS CHAPEL, TENNESSEE
Agriculture
Agronomy Club (Treasurer), New Farmers of America.

MATTIE ELIZABETH DOUGLAS
NASHVILLE, TENNESSEE
Business Education

PAULINE J. FLIPPIN
COLUMBIA, TENNESSEE
Elementary Education
Elementary Education Club.

THEODORE L. GILES
STANTON, TENNESSEE
Agricultural Education
New Farmers of America (Secretary), Botanical Club.

RALPH GILL
OKLAHOMA CITY, OKLAHOMA
Social Science
Omega Psi Phi.

AUDREY ELIZABETH GREENE
NASHVILLE, TENNESSEE
Business Education
Collegiate Counselors (Assistant Secretary), Future Business Leaders of America, Players' Guild, Alpha Kappa Mu.

AUDRA MAE GUYTON
NASHVILLE, TENNESSEE
Home Economics
Alpha Kappa Mu, Alpha Kappa Alpha.

JUNIOR

FLORINE ELLEN HENDRIX
CHATTANOOGA, TENNESSEE
Music

Concert Singers.

JAMES HUDSON, JR.
BETHPAGE, TENNESSEE
Agriculture

Kappa Alpha Psi.

DORIS D. JACKSON
HUNTSVILLE, ALABAMA
Home Economics

College Choir, Home Economics Club.

MARY ELIZABETH JOHNSON
FRANKLIN, TENNESSEE
Biology

Biology Club.

ALLEAN JONES
ARLINGTON, TENNESSEE
Biology

Biology Club (Secretary).

RUBY JEAN JORDAN
NASHVILLE, TENNESSEE
Business Education
Future Business Leaders of America.

PEARL KING
ATHENS, TENNESSEE
Mathematics
Mathematics Club.

CLAUDINE AQUIDA KOONCE
ALAMO, TENNESSEE
English
Lambda Eta Sigma.



CLASSES

ROBERT LEE HOLSTON
MEMPHIS, TENNESSEE
Business Administration

Phi Beta Sigma, Future Business Leaders of America.

JEANETTA HUDSON
CHATTANOOGA, TENNESSEE
Business Education

Alpha Kappa Mu, Future Business Leaders of America.

ETHEL DOBSON JARRETT
LEBANON, TENNESSEE
English

Players' Guild, English Club (Treasurer), Ivy Leaf Club.

PEGGY O'NEAL JOHNSON
LEBANON, TENNESSEE
Business Administration

Collegiate Counselors, Ivy Leaf Club, Future Business Leaders of America (Assistant Secretary).

HARDING L. JONES
OKLAHOMA CITY, OKLAHOMA
Industrial Education
Industrial Education, Scrollers Club.

JAMES E. KING
NASHVILLE, TENNESSEE
History
History Study Club, Los Buenos Vecinos.

YVONNE C. KIRKPATRICK
PEMBROKE, BERMUDA
Business Education
Alpha Kappa Mu, Alpha Kappa Alpha.

CHARLIE LAW
NASHVILLE, TENNESSEE
Biology
Alpha Kappa Alpha.

JUNIOR

WILLIAM A. LAWSON
NASHVILLE, TENNESSEE
Sociology

Student Christian Association (Co-Chairman), Inter-Fraternal Council (President), Alpha Kappa Alpha, Student Christian Council (President), Student Council (Director of Public Relations).

SAMUEL C. LEE
RIPLEY, TENNESSEE
Agricultural Education

New Farmers of America (Vice-President), Sphinx Club (Sergeant-at-Arms), Botanical Field Club.

NOAH McFERREN
SOMERVILLE, TENNESSEE
Agricultural Education

New Farmers of America (Treasurer).

DOROTHY MARIE McVEY
DALLAS, TEXAS
Social Administration

Newman Club (Vice-President), Social Science Club, Tennessee State Players' Guild.

H. RUTH METZ
GAINESVILLE, FLORIDA
Social Administration

Pyramid Club, Sociology Club.

WILLIAM HENRY MONTGOMERY
MEMPHIS, TENNESSEE
Physical Education

Omega Psi Phi, Newman Club.

WILLIE M. MOORE
BRIGHTON, TENNESSEE
Agricultural Education

Kappa Alpha Psi, New Farmers of America (Assistant Secretary).

GEORGE RANDOLPH OFFITT
GALLATIN, TENNESSEE
History

History Study Club.



CLASSES

IZORA LEE DONELSON, TENNESSEE
Business Education
Future Business Leaders of America.

MARY ELIZABETH LINDSLEY
OLD HICKORY, TENNESSEE
Sociology
Social Science Club.

HOWARD McNAIR
GADSDEN, ALABAMA
Biology

CLETIS FRANKLIN MEBANE
SOMERVILLE, TENNESSEE
Geography
History Study Club.

ROBERT JAMES MONTGOMERY
MADISONVILLE, TENNESSEE
Business Administration
Future Business Leaders of America.

CLYDE DELL MOORE
ARDMORE, OKLAHOMA
Biology
Concert Singers.

THOMAS FREDERICK MUMPHERY
NASHVILLE, TENNESSEE
History
History Study Club.

DUELL OVERTON
NASHVILLE, TENNESSEE
Social Administration
Social Science Club.

JUNIOR

GLADYS OLA PAGE
MIDDLESBORO, KENTUCKY
Music

Archonian Club, College Choir, Zeta Phi Beta Sorority.

KATHERINE JUANITA PATTERSON
NASHVILLE, TENNESSEE
Business Education
Library Club, Maestro Singers, Future Business Leaders of America.

MAGGIE LOU PAYNE
NASHVILLE, TENNESSEE
Business Education
Future Business Leaders of America.

LAURA PINKERTON
MURFREESBORO, TENNESSEE
Business Education

WILEY PORTER
Business Administration

MARY HELEN REED
DETROIT, MICHIGAN
History
Alpha Kappa Alpha (Assistant Dean of Pledges), History Study Club.

ROBERT OMAR ROBINSON, JR.
MEMPHIS, TENNESSEE
Music
Collegiate Counselors, Inter-Fraternal Council, Student Council, Men's Glee Club, Better Dormitory Club, College Choir, Phi Beta Sigma (Music Director).

AURELIA B. RUFFIN
NASHVILLE, TENNESSEE
Music



CLASSES

ADOLPHUS WILLIAM PALMER
LEBANON, TENNESSEE
Business Administration
Kappa Alpha Psi, Town Hall, Future Business Leaders of America.

CORNELIA PATTON
NASHVILLE, TENNESSEE
Business Education
Future Business Leaders of America.

ANDERSON G. PETTY
DECATUR, ALABAMA
Social Administration
Sphinx Club (Secretary), Social Science Club (Treasurer), Tennessee State Players' Guild.

EDWARD POLK, JR.
CHARLOTTE, TENNESSEE
History and Geography
History Study Club.

CLARENCE REED
CHICAGO, ILLINOIS
Biology
Alpha Phi Alpha.

HELEN LORENE ROBERTS
NASHVILLE, TENNESSEE
Business Education
Future Business Leaders of America.

HOWARD WALDEN RODDY
CHATTANOOGA, TENNESSEE
Social Administration

EARL LESLIE SASSER
NASHVILLE, TENNESSEE
Civil Engineering
Phi Beta Sigma (Business Manager), Engineering and Industrial Education Club (Secretary).

JUNIOR

HAZEL EMMETT SCOTT
NEWBERN, TENNESSEE
History

History Study Club.

LUELLA NAOMI SHANNON
CHATTANOOGA, TENNESSEE
Business Education

Future Business Leaders of America, Student Christian Association, Tennessee State Players' Guild, Town Hall, Spanish Club.

WILLIAM ISAAC SIMS
HUMBOLDT, TENNESSEE
Industrial Education

Phi Beta Sigma, Aviation Club, Industrial Education and Engineering Club.

HATTIE MAE SMITH
MURFREESBORO, TENNESSEE
Elementary Education

Elementary Education Club, Psychology Club (Secretary).

THOMAS HENRY SMITH
NASHVILLE, TENNESSEE
Mathematics

Mathematics Club, Biology Club.

GENNIE VELERIA SPENCER
NASHVILLE, TENNESSEE
Business Education

Ivy Leaf Club (Secretary).

WILLIAM D. STINSON
CHATTANOOGA, TENNESSEE
Business Administration

Kappa Alpha Psi (Keeper of Records).

LOIS DIXIE TUBBS
NASHVILLE, TENNESSEE
Elementary Education

Elementary Education Club.



CLASSES

ALLEN Y. SEARCY
RIPLEY, TENNESSEE
Agriculture

Sphinx Club, New Farmers of America.

JOSEPH S. SIMMONS
MEMPHIS, TENNESSEE
Animal Industry

New Farmers of America (Business Manager), Botanical Club, Student Christian Association.

HOLLIS D. SKINNER
DYER, TENNESSEE
Business Education

Future Business Leaders of America, Varsity "T" Club.

HELEN DONALENE SMITH
NASHVILLE, TENNESSEE
English

Alpha Kappa Alpha, Ivy Leaf Reporter, Lambda Eta Sigma (Secretary).

WALTER J. SMITH
COVINGTON, TENNESSEE
Pre-Dental

Kappa Alpha Psi.

NANCY KATHERINE STEWARD
EAST CHATTANOOGA, TENNESSEE
Physical Education

Basketball Team, Physical Education Club, Ivy Leaf Club.

LEROY ERNEST STOVALL
MEMPHIS, TENNESSEE
Industrial Education

LAURA M. TURK
KNOXVILLE, TENNESSEE
Elementary Education

Elementary Education Club.

JUNIOR

CLASSES

HENRIETTA R. UPTON
SWEETWATER, TENNESSEE
Elementary Education
Elementary Education Club.



WILLIE MAE WALKER
LYNNVILLE, TENNESSEE
Business Education
Delta Sigma Theta Sorority, Student Christian Association, Future Business Leaders of America (Secretary).

BARBARA J. WALTON
MEMPHIS, TENNESSEE
Elementary Education
Alpha Kappa Alpha, Players' Guild, Elementary Education Club (Reporter).



BARBARA LEE WARD
MEMPHIS, TENNESSEE
Elementary Education
Elementary Education Club, Alpha Kappa Alpha, Tennessee State Band.

ALMA JEAN WARE
MEMPHIS, TENNESSEE
History
History Study Club, Spanish Club.



LULA MAE WATSON
HALLS, TENNESSEE
English
Humanities Club.

ANNIE P. WHITE
NASHVILLE, TENNESSEE
Business Education



VIVIAN WALTON WHITSON
MEMPHIS, TENNESSEE
Business Education
English Club, Student Christian Association, Future Business Leaders of America.

ARTHUR JAMES WILLIAMS
MANSFIELD, LOUISIANA
Chemistry

Alpha Phi Alpha (Secretary), Chemistry Club (President), Beta Kappa Chi, Alpha Kappa Mu, Student Christian Association, Lambda Eta Sigma, Collegiate Counselors.



GEORGE OLA WILLIAMS
SOMERVILLE, TENNESSEE
English
Sigma Gamma Rho (Basileus), English Club (President), Humanities Club (Assistant Chairman of Social Committee), Lambda Eta Sigma.

JOSEPH H. WILLIAMS
NASHVILLE, TENNESSEE
Sociology

Baptist Student Union (President), Tennessee State Players' Guild (Vice-President), Alpha Phi Alpha, Alpha Kappa Mu.



CLARENCE WILSON
ANNISTON, ALABAMA
Business Administration
Future Business Leaders of America.

LAURA ETTA WRIGHT
MEMPHIS, TENNESSEE
Elementary Education
Elementary Education Club (Pianist).



S O P H O M O R E C L A S S



OFFICERS

ALFONSO BUTTS	President
ROBERT TUCKER	Vice-President
RUTH JENKINS	Secretary
DOROTHY COLLINS	Assistant Secretary
WILLIAM BANKS	Treasurer

ADVISERS

MRS. ANNIE G. SASSER	Mr. JAMES K. ANTHONY
MISS MYRTLE SEETS	



The Freshman Class is proud of the fact that it is the largest organization on the campus, and, in keeping with the progressive policy of the institution, it promises to be one of the most active. Since its organization in October of 1948, the class has taken part in cultural, social and religious activities of the campus as well as the community and of the entire city. Many of its members have already distinguished themselves in various phases of endeavor, and it is firmly resolved that the class of 1952 will be one of the greatest ever to graduate from this our Alma Mater.

FRESHMAN CLASS OFFICERS

TYNDALL MILLER, Nashville, Tenn. President
 EDWARD SMITH, Memphis, Tenn. Vice-President
 JEAN HOLLAND, Pittsburgh, Pa. Secretary
 BETTYE ROBERTS, Indianapolis, Ind. Assistant Secretary
 JAMES SMITH, Memphis, Tenn. Treasurer
 JEAN WOODSON, Nashville, Tenn. Student Council Representative

FACULTY ADVISERS

MR. R. J. HUDSON, MRS. A. ROBINSON, MISS CATHERINE MARYLAND



DIVISION OF AGRICULTURE



The Division of Agriculture at Tennessee A. and I. State College is organized for the purpose of instruction and administration into eight distinct, yet coordinated, departments. The work pursued in each department may lead to a minor in that field, however, work pursued in five of the eight departments may lead to the Bachelor of Science degree.

The training and experience of the staff of the Division of Agriculture at A. and I. State College, the facilities for instruction and research in the several departments, and the quality of the work done, are unexcelled by that of any institution of its kind.

The following is a brief description of the work of the various departments:

1. *Department of Agricultural Economics.*

The work of this department seeks to train the student particularly in the economics, business, commercial, and social aspects of agriculture. Students receiving training in this department may become qualified for positions as farm managers; county agricultural extension agents, and teachers and research workers in farm management, marketing, and agricultural economics generally. The department is approved for minor study only.

2. *Department of Agricultural Education.*

The over-all objective of this department is to train teachers for service in the area of vocational agriculture, as county agricultural extension agents, as veteran instructors of agriculture, and for instruction and research in agricultural education. A second objective is to upgrade the inservice teachers of vocational agriculture. This department is approved for both major and minor study.

3. *Department of Agricultural Engineering.*

Students receiving training in this department, in addition to becoming efficient as farm mechanics in connection with the work as teachers of vocational agriculture in secondary schools, or as individual farm owners and operators, may also become qualified for the sales and services of agricultural implements and for positions as teachers of agricultural engineering. The department is approved for minor study only.

4. *Department of Agronomy.*

The department of agronomy offers training in both crops and soils and, at the present time, includes vegetable crops and orcharding. The training in agronomy at A. and I. State College prepares students to become either practical agriculturists or professional agronomists. Practical agriculturists may find employment as farm operators and managers, as managers of soils and producers of crops, or for other basic operations in general farming, and as county agricultural extension agents. By pursuing a minor in agricultural education, the major student in agronomy may qualify as a teacher of vocational agriculture.

To become qualified as a professional agronomist, which prepares for positions of teacher and research worker along various lines of agronomy, such as plant breeding, soil improvement, the relation of soil nutrients to crop production,

etc., graduate study at least to the Master's degree is necessary. Such graduate study may be adequately pursued in the Department of Agronomy at Tennessee A. and I. State College. The department is approved for both major and minor study.

5. *Department of Animal Husbandry.*

Instruction in the Department of Animal Husbandry is of both a practical and professional nature, and is designed to train the student to become owner or manager of a livestock or dairy farm, or a general farm where considerable livestock are produced. A minor in agricultural education will qualify the major student in animal husbandry to become a teacher of vocational agriculture.

By pursuing graduate study at least to the Master's degree, the student may become qualified for positions as teacher or research worker in agricultural colleges, agricultural experiment stations, and laboratories of the United States government. Much research work is conducted in both state and federal laboratories along various lines, such as breeding, nutrition, growth, physiology, and lactation. Graduate study leading to the Master's degree is offered in this department. The department is approved for both major and minor study.

6. *Department of Biochemistry.*

The work of this department is designed to give training in the following fields of biochemistry: biochemistry of plant and animal products, chemistry of metabolism and nutrition of plants and animals, biochemistry of food and nutrition, chemistry of microorganisms as it relates to agriculture and food products, and the chemistry of insecticides, and fungicides. Emphasis is placed almost wholly upon biochemistry in its relation to crop and animal production, and to human food and nutrition. This department is approved for minor study for the Bachelor of Science degree.

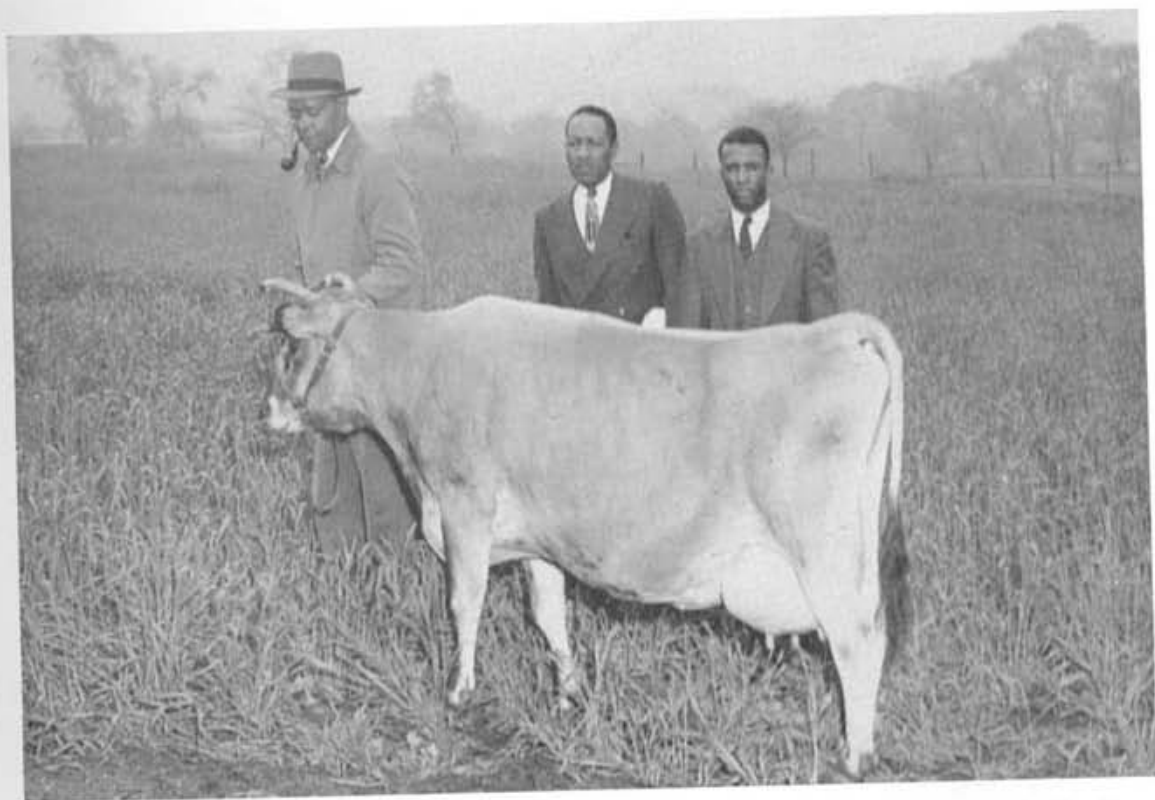
7. *Department of Horticulture.*

This department at present is a sub-division of the Department of Agronomy. Instruction is offered in vegetable crops, orcharding, and ornamental horticulture. This department is approved for minor study only.

8. *Department of Poultry Husbandry.*

The over-all objectives of the Department of Poultry Husbandry are: (1) to give adequate instruction to students and poultrymen in the most modern and successful methods of poultry keeping, and (2) to furnish materials for research and experimental work, to discover new facts that will be of benefit to both students and poultrymen, and will stimulate the teaching staff.

Students majoring in poultry husbandry may become qualified for work as poultry farmers, commercial poultry farm managers, county agricultural extension agents and, by minoring in agricultural education, they may qualify to teach vocational agriculture in secondary schools. By pursuing graduate study at least to the Master's degree, the student may also qualify for college teaching and research in poultry husbandry, breeding, nutrition, and physiology.



Members of Animal Husbandry Staff with Aim's Fairy Rosebud, Matron of Dairy Herd



Poultry

THE DIVISION OF BUSINESS ADMINISTRATION AND EDUCATION



The Division of Business Administration and Education is one of the largest Divisions of the college. Among its several aims is that of providing training in the techniques, and principles underlying modern business as a foundation for careers in that field.

The Division offers courses leading to the bachelor of science and the master of science degrees. Its course offerings include accounting, economics, finance, marketing, secretarial

and office practice, business education, and office machines. Courses in life underwriting have been recently added to the curriculum.

The teaching staff of the Division of Business is composed of the following persons: Mr. L. R. Holland, Acting Director; Mr. A. T. Scott, Jr., Mr. L. J. Willie, Mr. J. H. Lewis, Jr., Mrs. M. K. Gaines, Mrs. M. Clay Pinkston, Mrs. C. V. Crump, Mrs. M. L. Jackson, Miss M. L. Gordon, Mrs. Mabel Crooks, and Miss Bennie Mae Sullivan.



The students pictured above are members from the life underwriting salesmanship class shown in an "actual" selling situation. Left to right: Carl Crutchfield, Helen Patton, Elizabeth Ann Rivers, and Miller Mosley.



A Class in Typewriting

DIVISION OF EDUCATION

For every child an education which, through discovery and development of his individual abilities, prepares him for life; and through education and guidance prepares him for living which will yield him the maximum of satisfaction and, help him render the maximum of service. In the attainment of these ideals the division of education has a colossal task, but one well worth while. It is the duty and task of the college and the teacher to guide the experiences of the youth in such a way that as future men and women they will continue to grow in effectiveness as citizens.

ART

Art and Art Education is among the oldest offerings in the college curriculum and it has won a secure place because of its adherence to the belief that all people may benefit by art information and that the idea of art is so broad that all may find some opportunity for expression in the field. And further, that understanding of, and appreciation for art principles and their application in the public school curriculum can

aid in the motivation of the school subjects, and the integration of the child into his environment.

The Art Department embraces the responsibility of developing personality and helping in the adjustment of students in their personal relationships through the message of art: drawing, painting, modeling, crafts, design, and Art Education.

ELEMENTARY EDUCATION

The Department of Elementary Education has as its aim the education of elementary teachers to discharge the responsibilities associated with membership in the emerging world community. This task is an intricate one and realizing this we feel the need of attracting to the profession young men and

women with promise of success and for guiding into other vocations those who lack such promise.

The official organization of the department is the Elementary Education Club with a membership of more than 250 young men and women. The club was organized in 1926 by Mrs. F. A. Sanders.

MUSIC DEPARTMENT

The Music Department of A. and I. State College is now being reorganized so that its offerings will include training in every phase of music in addition to music education. Programs for music majors and minors will cover piano, organ, voice, theory and composition, church music in addition to school music teaching. Four-year programs for the Bachelor of

Arts Degree as well as five-year programs for Bachelor of Music Degree are now included in the department's offerings. Within a few years and after thorough implementation of its undergraduate program with the best of equipment and personnel the department will begin offering both the Master of Arts Degree and Master of Music Degree.

PSYCHOLOGY

The Psychology Department is a full department of the liberal arts college. In addition to offering a major in psychology, the department offers courses in psychology for students in education, and offers graduate courses in educational psychology, mental hygiene, clinical testing, and statistics. The depart-

ment also operates a testing bureau which includes machine scoring of standardized tests and teacher-made objective examinations; and operates a clinic for individual mental testing, aptitude testing, personality testing, and diagnosis of subject disabilities.

A group of primary children listen to a story being read by Mrs. Clinton Derricks, the demonstration teacher in a one-teacher laboratory school conducted on the campus of Tennessee A. and I. State College to provide summer school students an opportunity to observe modern teaching practices.



A Class in Drawing and Painting
JEAN PAUL HUBBARD, Instructor



A Class in Art Education
F. E. THOMPSON, Professor
ELLIOTT CALDWELL,
Laboratory Assistant
B. A. ADAMS
Laboratory Assistant



DIVISION OF HISTORY AND GEOGRAPHY

FUTURE SOCIAL STUDIES LEADERS MAPPING PLANS FOR TOMORROW



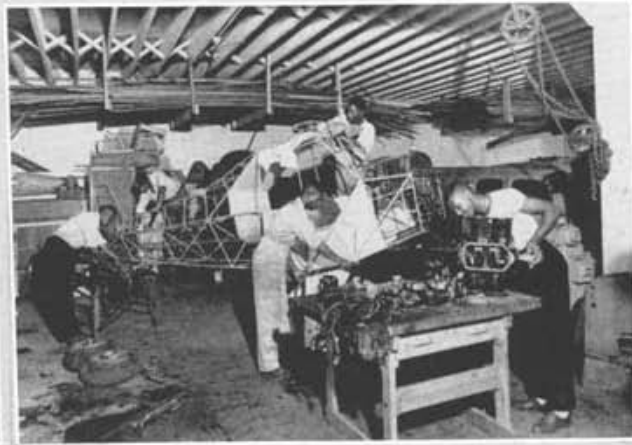
Left to right: Robert Roane, Muskogee, Okla.; Ira Baxter, Lewisburg, Tenn.; Jefferson Wiggins, Dotham, Ala.; Andrades Turner, Nashville, Tenn.; Prof. Merl R. Eppse, Director; William Vantrease, Watertown, Tenn.; George Breathett, Memphis, Tenn.; Clara Pinson, Paris, Tenn.; Algic Oldham, Dyersburg, Tenn.; Paul Thompson, Nashville, Tenn.; Ralph Mullins, Pikeville, Ky.

HISTORY AND GEOGRAPHY TEACHERS REGISTERING MAJORS



Left to right: George Breathett, Major; Miss Lois McDougald, History Instructor; Prof. Merl R. Eppse, Director of Division; Miss Mazie O. Tyson, Geography Instructor; Mr. Elze Bogan, Graduate Assistant; Mr. James K. Anthony, Geography Instructor; Dr. Elsie M. Lewis, Professor of History; the group standing are majors registering for the Fall Quarter, 1947.

DIVISION OF ENGINEERING



Top Left—ARC AND ELECTRIC WELDING

Center Left—AUTO MECHANICS

Bottom Left—BRICK LAYING AND TROWEL TRADES

Top Right—SHOE REPAIRING

Center Right—PLUMBING

Bottom Right—AERO-MECHANICS

DIVISION OF HOME ECONOMICS

The Division of Home Economics is located in the Women's Building with classrooms, laboratories, offices, and equipment provided for the Department of Child Development, Clothing and Textiles, Foods and Nutrition, Home Economics Education and Home Management.

The Division of Home Economics aims to guide students in (a) developing a sound and satisfying philosophy of life, (b) using intelligence in solving personal and family problems, (c) preparing for vocations, (d) developing wholesome and satisfying personal and social relationships, and in (e) enriching their general and cultural education.

The Home Management residence in which a group of seniors live for a period of six (6) weeks, provides an excellent opportunity for training and management. Each girl has the sole responsibility of managing a home, keeping accounts, making wise use of labor-saving devices, and planning, preparing, and serving family meals.

In the Department of Home Economics Education six (6) off-campus teaching centers have been selected as a part of the program in order to provide first-hand teaching experiences in a community similar in many respects to that in which they will teach after graduation.

The student-teacher gains experiences in working with adults through teaching and participation in home economics and agricultural evening classes and extension classes.

The Foods and Nutrition Department includes courses in food preparation, food preservation, meal planning, experimental cookery, quantity foods, school lunch, elementary nutrition, advanced nutrition, child

nutrition, community nutrition and nutrition in disease.

Course offerings alone cannot adequately describe the Department of Foods and Nutrition. Equally significant is the functional point of view from which the courses are taught by each of the instructors.

Instruction in the department is highly individualized; it begins at the point of need of the students and goes forward according to their own speed and ability. Technical processes are closely supervised as classwork progresses. This principle of functionalism has promoted interest and accelerated learning in the department.

The Department of Clothing and Textiles offers courses designed to furnish essential knowledge concerning consumer problems in Clothing and Textiles. Instruction is provided for students who wish to prepare for vocations, professional and business positions, such as teachers, extension workers, research workers, clothing consultants, and purchasing agents for institutions and department stores.

The department has developed in its new program more effective ways of carrying out its plan to help the students realize their goals and contribution to the general program. Each teacher has individual conference periods in order to guide students in self-confidence, acquiring attitudes of understanding and responsibility.

There is an increased feeling of responsibility on the part of the Clothing and Textiles staff to provide that type of instruction in the department which will help the student improve his status and to make the student an even greater asset to society.



Nursery School Children enjoying themselves at a Birthday Party. R. A. McDowell, Instructor.

*Making tailored dresses in an
Advanced Clothing Class*

MRS. E. H. SMITH, *Instructor*



*Members of a class in food preparation
in the Foods and Nutrition
Department*



*Organoleptic testing and application of
scientific principles of food preparation
or study in a class of Experimental
Foods*

MISS C. E. HALL, *Adviser*



DIVISION OF THE HUMANITIES



Dr. Thomas E. Poag welcomes Carol Brice, noted contralto singer and her famous brother, Jonathan Brice, her accompanist, to A. and I. for an appearance in the 1948-49 Lyceum Series.

One of the largest, and certainly one of the most vital, units of the Tennessee Agricultural and Industrial State College is the Division of the Humanities, headed by Dr. Thomas E. Poag, Director. The Division of the Humanities consists of three major departments: the Department of English, the Department of Modern Foreign Languages, and the Department of Speech and Drama. Every student, at one time or another, receives at least a portion of his training in the Division of the Humanities, and many of them remain in the Division to major in one of its departments and to prepare themselves for useful careers in the employment of the knowledge and skills acquired therein.

The Department of English, which is the largest of the three units of the Division, is organized into three sections: the Section of Freshman English and Composition, the Section of Sophomore English, and the Upper Division of the Department of English. Each of these sections has its own chairman, and the

Director of the Division serves as coordinator of the three sections. Mrs. Alma Dunn Jones, Professor of English, is chairman of Freshman English and Composition; Mr. Hinton C. Jones, Assistant Professor of English, is acting chairman of Sophomore English; Dr. E. L. Sasser, Professor of English, is chairman of the Upper Division of the Department; and Dr. Thomas E. Poag is Coordinator of the Department.

The Executive Committee of the Department of English is composed of the following members: Dr. E. L. Sasser, Dr. T. E. Poag, Dr. G. W. Gore, Jr., Mrs. Alma Dunn Jones, and Mr. Crawford B. Lindsay. The chairmanship of this committee rotates each quarter.

The Department of Modern Foreign Languages (French, Spanish and German) is headed by Mrs. Alma T. Watkins, Associate Professor of Romance Languages.

Dr. Thomas E. Poag, the divisional director, is also Head of the Department of Speech and Drama.

A graduate class in "American Pronunciation" under the supervision of Mrs. Millicent Dobbs Jordan, seated center. Seated left is Miss Cathryn Rivers and at right Mr. Singer Buchanan.



The English Clinic is open to all students of the College who are deficient in English Composition. The Clinic is conducted day and night by the Freshman English staff under the supervision of Professor Alma Dunn Jones, Chairman of Freshman English. Instructors in the Clinic for 1948-49, reading from left to right standing are; Miss Myrtle N. Seets, Mr. Hinton C. Jones, and Mr. Robert J. Hudson.



A class in "Spanish Composition" receiving instruction from Mrs. Augusta E. Meriwether, Associate Professor of Romance Languages, and a member of Phi Beta Kappa.



A class in "Play Direction" studying "Stage Composition" under the supervision of Dr. Thomas E. Poag.





Miss Nora Roy (extreme right) supervising a Social Administration class in crafts and skills.

DIVISION OF POLITICAL AND SOCIAL SCIENCE

The ultimate goal of the Division of Political and Social Science is to formulate and prosecute a program of work that will contribute to the fulfillment of the philosophy of the College and to the attainment of the 14 goals of the College. In agreement of this idea, the division views its general objectives to be as follows:

1. To develop a strong division consisting of the departments of Political Science, Sociology, Social Administration, Economics, and Philosophy.
2. To stimulate a greater interest, appreciation and understanding of the Social Sciences.
3. To promote understanding, good will, and cooperation throughout the state and nation.
4. To cooperate closely with the Political and Social Agencies of the state.
5. To provide a basis for the understanding of the social processes which will assist the student in making possible social progress.
6. To train research workers who may assist in the supervision of research in the universities and colleges, government agencies, state and municipal research bureaus, and civic and taxpayers' associations.
7. The preparation of practitioners in the field of Social Administration, and the preparation of teachers and research workers in Sociology, Political Science, Economics and Philosophy.
8. To acquaint private and public agencies of the state and region with the availability of our graduates for employment.

DIVISION OF POLITICAL AND SOCIAL SCIENCE

The activities of the Division are many and varied. During the school year of 1949-50, the Division sponsored the following four outstanding projects in addition to many others:

1. Marriage and family clinic under the direction of Mrs. Kathleen Poag with the assistance of the entire divisional staff.
2. Recreation and playground institute under the leadership of Mrs. Mary E. Lee, Head of the Department of Social Administration, with the assistance of her co-chairman, Miss Nora Roy, and the divisional staff.
3. The student election which is directed by Dr. Susie O. Bryant, Chairman of the Department of Political Science, who was assisted by staff mem-

bers. The student election was organized and functioned exactly as the regular elections common to a democratic government.

4. The Divisional Club in keeping with the progressive policies of our institution sponsored a vocational achievement program. This program was well received by the entire University community.

Although the Division of Political Science is one of the youngest divisions of the College, since its inauguration it has had a tremendous growth. The curriculum offerings compare favorably with those offered in the leading educational institutions of the country. The Division is looking forward to the coming school year with a great deal of anticipation in light of the progressive program which has been planned.

Consultation period in the teachers' office in the Division of Political and Social Science.



THE DIVISION OF SCIENCE

The College offers a wide range of major courses and curricula to train biologists, chemists, mathematicians, and physicists for teaching, research, technical vocations, and several other professions. Emphasis is given to the science backgrounds of those who plan to pursue careers in medicine, dentistry, nursing, laboratory technology, and related fields.

In order to provide the best training in these areas, no efforts have been spared to obtain the most modern facilities for teaching and research. To date, the Division of Science has seventeen well-equipped laboratories and several other rooms for lectures, storage, preparations, and offices.

The Graduate Division of the College offers majors leading to the Master of Science degree in chemistry, mathematics, and zoology respectively. Along with provisions for graduate courses in these fields, staff members and graduate students are conducting several significant research projects that offer excellent training for those who plan careers in scientific research.

Some of the outgrowths of the scholarly activities of the staff are textbooks, laboratory manuals, and more than thirty published researches in various specialized branches.

Aside from the formal instructional programs in the Division of Science, each major department sponsors several extracurricular science activities, including departmental clubs, a national honorary scientific society, departmental publications, seminars, and various student projects for the improvement of the scientific perspective and the physical care and maintenance of our facilities.

Plans for the immediate future in the sciences at the College include the expansion of the physical plant, the addition of several new major fields of study, and the addition of several well-qualified persons to the present staff. All of the present activities and future plans in the sciences are focused on the improvement of life in Tennessee and the nation through better training in science.

IN THE LABORATORIES

1. Illustrated mathematics . . . 2. Chemical storage . . . 3. Organic chemistry . . . 4. Chemistry research . . .
5. Graduate zoology . . . 6. Biology models . . . 7. Zoology research . . . 8. Chemical storage . . . 9. Physics . . .
10. Biological models and skeletons . . . 11. Zoology research . . . 12. Chemistry research . . . 13. Biology.



F O O T B A L L



TENNESSEE STATE 1948 EDITION OF THE 1947 NATIONAL CHAMPIONS

First row—Walter Gillespie, Lafayette Lacey, George Quarles, Fred Bullard, Kendrick Marshall, Russell King, Milton Smith, Alvin Poller, Willie Tanner, Clarence Nails. *Second row*—Samuel Green, George Gilchrist, Raleigh Wynn, Luddie Johnson, John Sanders, William J. Smith, Billy Dixon, John Salters, William Rhodes. *Third row*—Joe Herndon, Willie Evans, John Rhodes, John Sharpe, James Maull, William A. Smith, Glasco Franklin, Robert Tapscott, Marvin Bridges. *Fourth row*—George Brown, Willie White, Paul Crum, Zeno Adams, Clifton Lewis, Jesse Joseph, William Fowlkes, Nathaniel Taylor, Charles Hamilton. *Fifth row*—Conrad Perkins, Alvin Sharpe, Grammison Davis, Carl Carter, Bob Fowlkes, Willie Savage.

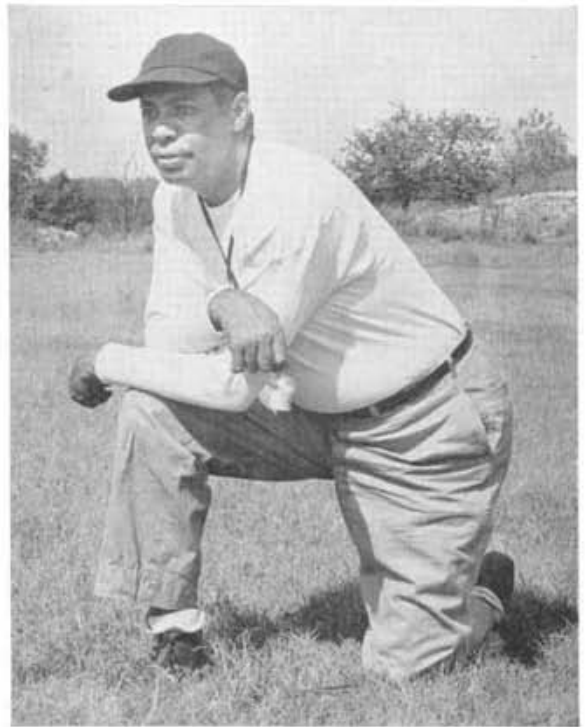
TENNESSEE STATE COLLEGE TIGERS' SEASON RECORD 1948

Tennessee State College	47	Alcorn College	0
Tennessee State College	45	Langston University	0
Tennessee State College	27	Allen University	2
Tennessee State College	6	West Virginia State College	6
Tennessee State College	7	Wilberforce State College	26
Tennessee State College	6	North Carolina State College	7
Tennessee State College	32	Lincoln University	0
Tennessee State College	0	Kentucky State College	19
Tennessee State College	31	Louisville Municipal	7
—	—	—	—
Tennessee State College	204	Opponents	67



RALEIGH WYNN

Senior, 6'2", weight, 220 pounds, was selected All-American tackle 1948. Wynn brought to a close three years of Mid-Western competition on Thanksgiving when the Tigers defeated the Louisville Municipal Bantams in their annual Home-coming celebration. Wynn hails from Knoxville, Tennessee.



H. A. KEAN

Head Coach and Director of Health and Physical Education.



"BILLY" DIXON

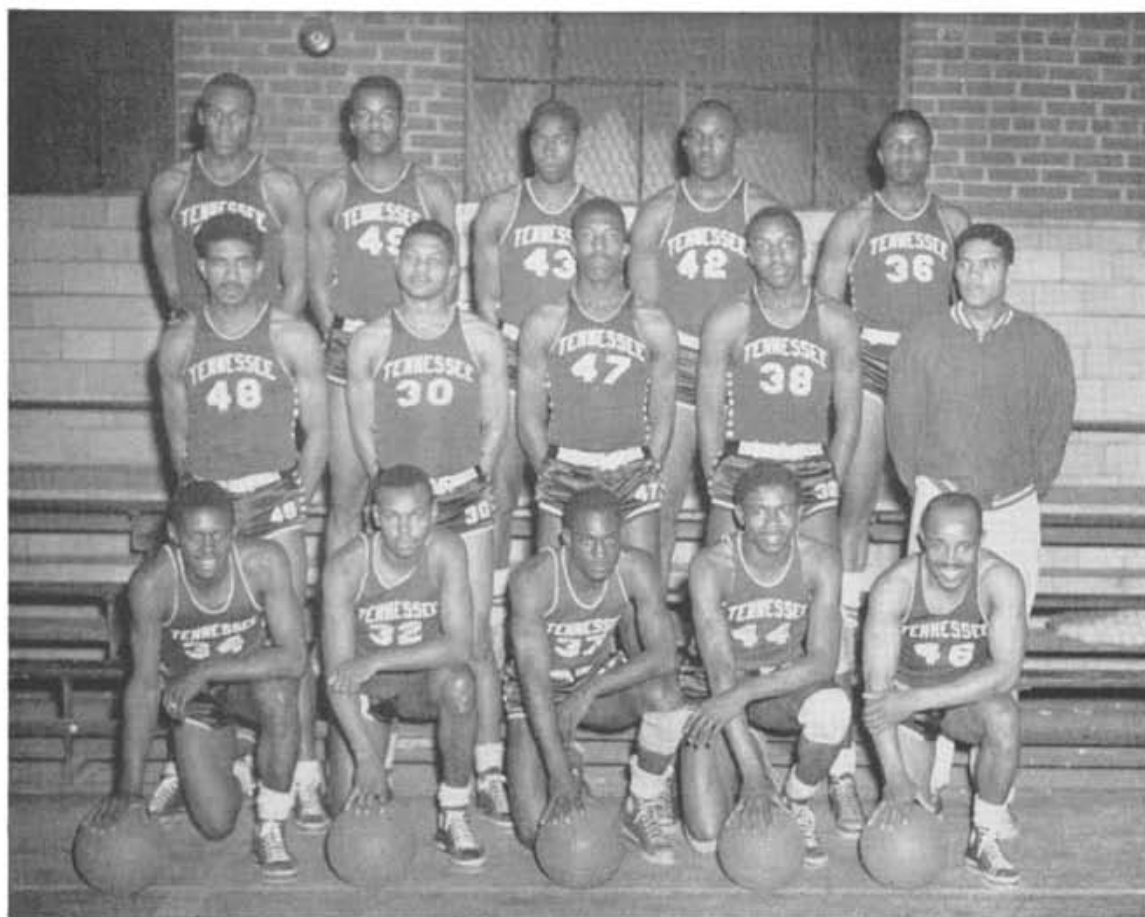
A senior and a major in the Department of Health and Physical Education, was selected All-American tackle in 1947. Height 6' 1", weighs 225 pounds. He, too, brought four years of Mid-Western Conference competition to a close when he made his final home appearance against Louisville Municipal College on Thanksgiving Day. Dixon is from Oklahoma City, Oklahoma.



NATHANIEL TAYLOR

A senior and a major in the Department of Health and Physical Education—All-American quarterback 1946-47, 5' 11", weighs 175 pounds, made his final appearance before the home town fans at the annual Thanksgiving Home-coming game on November 25, 1948. His precision passing and cool generalship have helped to make the Tigers a team to be respected all over the nation. Taylor is from Oklahoma City, Oklahoma.

BOYS' BASKETBALL



Reading left to right, first row—Clarence Wilson, John Hilliard, Vernell Allen, Tommy Gipson and William Fowlkes. Second row—Joe Herndon, Nathaniel Taylor, John Edwards, Elija Latimer, Coach Matthews. Third row—Bobby Harris, Joshua Grider, Wallace Handy, John Salters, Willie Manuel.

FIVE SENIORS SPARK FOURTEEN-GAME WINNING STREAK IN 1949 CAMPAIGN

The impetus behind a fourteen game winning streak of the Tennessee State College Tigers is received from the atomic explosiveness of the five seniors, namely: Joshua Grider, Frank Lewis, Nathaniel Taylor, Clarence Wilson, and John Hilliard. The five named above entered Tennessee State as freshmen in 1946 and have met the best in the major conferences throughout the country.

Date	Tennessee State	Score	Opponent	Score	Where Played
December 7	Tennessee State	66	Prairie View	35	Nashville
December 13	Tennessee State	68	Alabama State	52	Nashville
January 4	Tennessee State	64	A. and T. College	44	Greensboro
January 5	Tennessee State	59	N. C. State	38	Durham
January 6	Tennessee State	66	St. Paul Polytechnic	31	Lawrenceville, Va.
January 7	Tennessee State	65	Virginia Union	46	Norfolk, Va.
January 8	Tennessee State	57	Virginia Union	37	Richmond, Va.
January 10	Tennessee State	57	Morristown	31	Morristown, Tenn.
January 13	Tennessee State	82	Wilberforce U.	30	Nashville
January 15	Tennessee State	75	Lincoln U.	48	Nashville
January 20	Tennessee State	62	Wilberforce State	51	Wilberforce, Ohio
January 21	Tennessee State	82	Wilberforce U.	31	Dayton, Ohio
January 22	Tennessee State	57	Kentucky State	41	Frankfort, Ky.
January 25	Tennessee State	83	Arkansas A. and M.	32	Nashville
January 27	Tennessee State	107	Knoxville G. T.	31	Knoxville
January 29	Tennessee State	93	Louisville Municipal	41	Nashville
January 31	Tennessee State	87	YMCA Bombers	46	Louisville, Ky.
February 1	Tennessee State	60	Lincoln University	47	Jefferson City, Mo.
February 5	Tennessee State	60	Kentucky State	53	Nashville
February 12	Tennessee State	81	Louisville Municipal	42	Louisville, Ky.
February 19	Tennessee State	66	Wilberforce State	42	Nashville
February 26	Tennessee State	68	Alabama State	43	Montgomery, Ala.
March 4	Tennessee State	92	Arkansas State	57	Pine Bluff, Ark.
March 5	Tennessee State	100	Navy	28	Memphis, Tenn.

GIRLS' BASKETBALL



Left to right, front row—Lula Tucker, Nancy Steward, P. Williams, (Coach), Flossie Love, Ruth Jenkins. Second row—Evelyn Taylor, Dorothy Williams, Lillie Rivers, Jennie Dixon, Dorothy Spann. Back row—Sendie Cummins, Dorothy Mallory, Josephine Rollerson, Katherine Frierson. (Not pictured)—Emma Reed.

B O X I N G



SEASON'S RECORD 1947-48

Won 9—Lost 1

Left—CHARLES GERMAN

*Mid-Western Middle Weight Champion 1947-48,
Semifinalist Southern Olympic Tournament 1948*

Right—CLARENCE MOUTRY

Mid-Western Heavy Weight Champion 1947-48



*Left—WILLIAM (TINY) COX
Feather Weight Champion 1947-48
Semifinalist, Chicago Golden Gloves 1948*

Center—GEORGE SAUNDERS

Trainer

Right—BOBBIE HARRIS

Boxer—165 lbs.

OTHER BOXERS NOT PICTURED

VERNON ALLEN

Mid-Western Welter Weight Champion 1947

CHARLES HAMILTON

Mid-Western Welter Weight Champion 1947

TIGER SHARKS

1948-49 VARSITY SWIMMING TEAM

William Abernathy, Free Style Dash; Curtis Anderson, Diver; Elihu Blanks, Diver; Marvin Blaine, Free Style Distance; Leslie Bowman, Breaststroke; Charles Brown, Free Style Dash; Downey (Co-Captain), Free Style Distance and Dash; Furney Green, Free Style Dash; James Hightower, Breaststroke; Edmond Holmes Backstroke, Breaststroke; Vern Hines, Breaststroke; Charles Jones Free Style Dash; James Smith, Free Style Distance; Milton Smith, Backstroke; Frank Stewart (Captain), Free Style Distance and Dash; Nelson Winbush, Free Style Distance; Hairston Clay, (Manager).

1947-48 SWIMMING RECORD

Tennessee State 35½
West Virginia State 30½
Third place C.I.A.A. Championship, Hampton Institute
1st—50-yard Free Style
1st—220-yard Free Style
1st—440-yard Free Style
1st—400-yard Relay Team

SWIMMING TEAM 1948-49

Reading Left to Right: First Row—Edmond Holmes, Curtis Anderson, Elihu Blanks, Leslie Bowman, Charles Brown. Second Row—Charles Jones, Vernon Hines, Frank Stewart (Captain), Joseph Downey, (Co-Captain) William Abernathy, William Hightower. Third Row—Tom Hughes (Coach), Milton Smith, William Smith, Furney Green, Marvin Blaine, Hairston Clay (Manager).

ELIHU BLANKS

Low Board Diver, Dash and Free Style Relay man. High point man in dual meet at Hampton Institute, December 17, 1949.



FRANK STEWART

Captain 1948-49. Free Style distance and dash. High point man in all meets and received individual honors for high point man in C.I.A.A. Swimming and Diving Championships, Hampton Institute, 1949.



S W I M M I N G

1948-49 SWIMMING SCHEDULE

Tennessee State at Hampton Institute, December 17—Tenn. 57; Hampton 38
Howard University at Tennessee State—January 8
West Virginia State at Tennessee State—February 5
Hampton Institute at Tennessee State, February 11
C.I.A.A. Championship, Howard University, February 24, 25

400-YARD FREE STYLE RELAY TEAM—C.I.A.A. CHAMPIONS

Reading Left to Right: William Smith, Frank Stewart, Captain; Joseph Downey, and William Abernathy.





T R A C K

Left to Right: Kneeling—Calmin Moore, Tapscott, Marvin Bridges. Standing—Clarence Moutry, Mordecai Walker, Charles Smith, trainer; Edward Temple, Leroy Craig.

PHOTOGRAPHED AT TOP

Left—AUDRY (MICKY) PATTERSON—Member of U. S. A. Olympic Team, Indoors A.A.U. Champion 200 meter—26.4, Tuskegee Relay 200 meter—26.0, Olympic Try-outs—Providence 25.6, Winner of 100 meter International Meet, France and America, Paris, France.

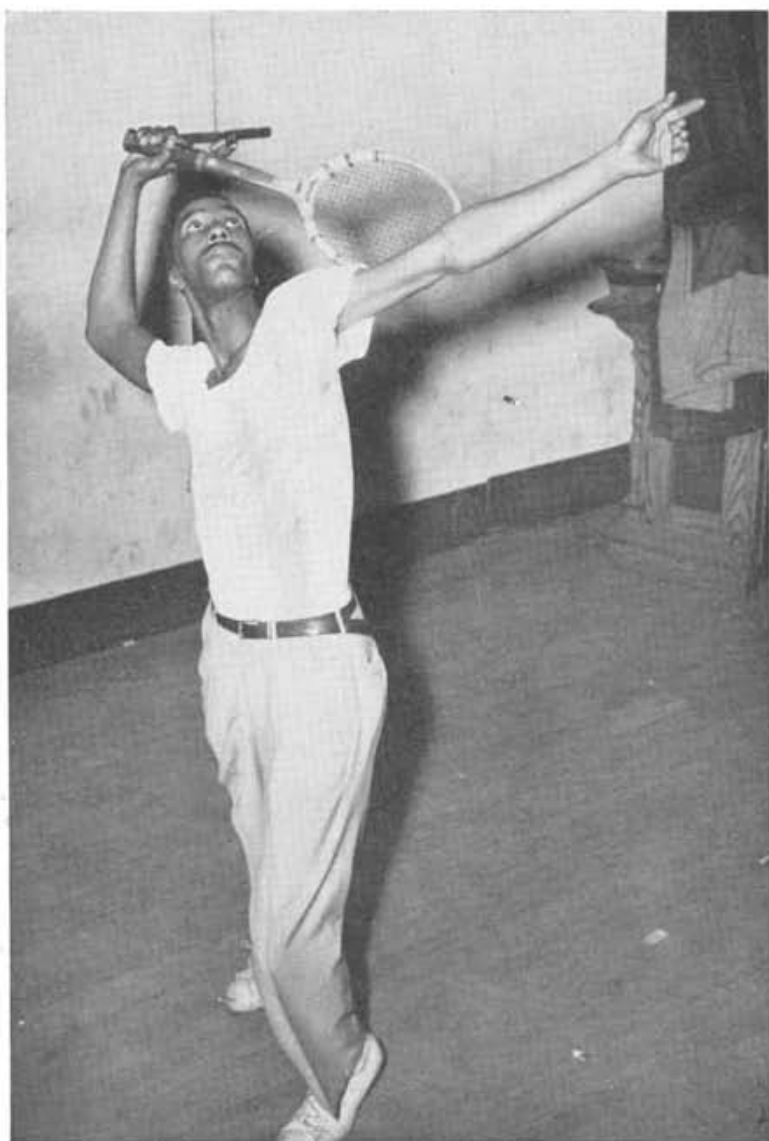
Center—MARVIN BRIDGES, Mid-Western Mile Champion—4.40, Mid-Western Quarter Mile Champion, time 50.1.

Right—MARY HARDAWAY—Winner 50 meter, Tuskegee Relays, tied world's record, 6:4; placed third A.A.U., Grand Rapids, Michigan.

Below—EMMA REED—Member of U.S.A. Olympic Team—High Jump Champion, Winner Tuskegee Relays, '39; A.A.U. Indoor Broad Jump; U.S.A. Olympic Champion, Providence, Rhode Island. Being measured by Coach Lawrence Simmons.



T E N N I S



HERBERT BASS
Mid-Western Singles Champ

Tennis at Tennessee State College made its debut in intercollegiate competition in the Mid-Western Tournament by entering Herbert Bass in the men's singles, who came through with flying colors by defeating Freddie Hall of Wilberforce State College, 6-1, 6-1, 6-3 to win the Single Crown of the Mid-Western Conference held at Wilberforce State College.

TENNESSEE STATE COLLEGE THEATRE PROJECT

TENNESSEE STATE PLAYERS' GUILD 1948-49



These students are members of the Laboratory Theatre, the Repertory Players, the Playwriters Guild, and the Choral Speaking Choir. Officers of the Tennessee State Players' Guild are: Mr. O'Ferrill Nelson, President; Mr. Joseph Williams, Vice-President; Miss Jeannine Allison, Secretary; Miss Geraldine Paris, Assistant Secretary; Mr. Alfonso Sherman, Treasurer.

THE SCENIC LABORATORY



A class in stagecraft under the supervision of Mr. Benton A. Adams, Technical Director of the Tennessee State College Theatre Project.

Dr. Thomas E. Poag, Director of the Tennessee State College Theatre Project, explains to new and old members of the Tennessee State Players Guild the technique of staging farce and comedy.



A dramatic scene from "Charley's Aunt," a three-act farce by Charles Brandon as produced by the Tennessee State Players' Guild.



The last act of "Charley's Aunt," as presented by the Summer Theatre in 1918.





**DRAMATIC SCENES
FROM "MACBETH"**

*Act I, Scene III, featuring
Mr. Singer A. Buchanan and
Mrs. Lucille Smith.*



*Act I, Scene III. Standing
from left to right are: Joseph
Williams, Alfonso Sherman,
Clifton de Marks, David
Whitman, O'Ferrell Nelson,
Willie Davis, Alfonso Butts,
W. V. Harper, and Robert
Tucker.*



*Act. III, Scene I. On steps
Lucille Smith; standing from
left to right are: Jeannine
Allison and James Hudson.*

THE DEPARTMENT OF MUSIC

During the school year 1948-49, the Music Department of A. and I. State College began a reorganization program of far reaching significance, the effects of which are destined to be felt in the education of our youth throughout the state. In keeping with the rich musical heritage of the state of Tennessee and the well known cultural tradition of the city of Nashville it is but natural that A. and I. State College should embark upon the broadest possible musical offerings in order to adequately serve the students of the state and nation.

The plan for reorganization includes the acquisition of adequate equipment, personnel and a curricula embodying the highest quality of training in all phases of music. A program for majors and minors leading to both the Bachelor of Arts Degree and the Bachelor of Music Degree has been instituted. The

major fields are Piano, Voice, Music Education, Theory, Composition, Organ and any legitimate Orchestral Instrument. Minors may be selected from the same field.

The reorganization program of the department is bound to have a salutary effect on all musical organizations. To be sure, these organizations have already won many distinctions and with additional facilities and personnel they will achieve even greater recognition. In addition to the Marching Band, the Concert Singers, and the College Choir, appearing in the year book, plans are already under way for the development of a Symphonic Band, Symphony Orchestra, a singing group called the Meistersingers and a Festival Choir. This choir will include all other singing organizations and additional students who wish to participate.

COLLEGE CHOIR MEMBERS

Xernona Brewster, Xenobia Brewster, Gloria Talbott, L. V. Bious, Beulah S. Gray, Mai Dee Holand, Sarah A. Winston, Alvenia Hines, Mary Alice Yancey, Joyce A. Freeman, Yvonne Steel, Henrietta McCallister, Gladys Page, Doris Lee, Carolyn Blanton, Thressa Estes, Aurelia B. Ruffin, Joye Teague, Bernice Henri, Florine Hendrix, Robert W. Cole, John Crawford, Edward L. Smith, Jesse B. Winlock, Omar Robinson, Veledis E. Carter, Jeremiah Hodges, Charles W. Watson, Emerson R. Able, Robert Tapscott, George Hunter, William Saunders, Earle Turner, Joseph Brooks, Clifford McCray, Calvin Jones, David Newborn, Charles McDonald, John W. Woodson, Emmitt W. Reeves, Willis A. McCallister and William Johnson III.





BAND PERSONNEL

Majorettes—Rose Allen, Rose M. Blackmond, Xenobia Brewster, Xenoma Brewster, Marion Bullett, Marjorie Church, Eunice Jones, Johnnie Lindsley, Betty Sue Mills, Billie Madlin, Barbara Mathis, Martha Prather and Barbara Speak, Norma Stanley.

Band—Emerson Able, John Armstead, George Brady, Joseph Brooks, Thomas Brooks, Walter Brown, Charles Buswell, James Bell, Charles Callender, Robert Clark, Estell Covington, William Crockett, Samuel Ford, Robert Garner, Willie Gardner, Andrew Goodrich, Henry Green, Theophilus Griffin, Hulon Heard, Charles Hill, Robert Hodge, William Hogg, George Hunter, Nelson Jackson, William Johnson, Calvin Jones, Roderick Johnson, James Kendrick, Thomas Lyle, Eddie Matthews, Willie McCallister, Clifford McCary, Lamar Mitchell, Irene Nelson, Charline Parker, Emmett Reed, Lewis Roberson, Omar Robinson, William Saunders, Joseph Thomas, Emmett Thompson, Earle Turner, Gene Tyler, Theodore Wade, Barbara Walton, Barbara Ward, Thomas Wood, Howard Young, John Springer, Columbus Pendleton, Howard Whitley, C. P. Carmichael.

TENNESSEE STATE COLLEGIANS

Reading left to right, front row—Estell Covington, Theodore Griffin, John Reed, Andrew Goodrich, Sam Ford and George Hunter. *Second row*—Nelson Jackson (piano), James Cleveland, Thomas Woods, Jr., Walter Brown, and J. D. Chavis, Director. *Third row*—Clifford McCray (bass), James Hendricks, William Johnson, Sonny Turner and William Abernathy. *Fourth row*—Paul Kidd (drums).



STATE DEPARTMENT OF EDUCATION



A group of selected Tennessee Jeanes Supervisors confer on the campus of Tennessee A. and I. State College to formulate plans for the development of supervisory competencies which they will need in order to be better prepared to exercise leadership in providing better classroom situations for the boys and girls of Tennessee.

They are being assisted in their deliberations by Dr. Eunice S. Matthew, State Consultant for In-service Teacher Education (standing) and (reading left to right) Mr. R. E. Clay, State Developer of Negro Schools, Miss Charity Mance, Consultant for In-service Teacher Education, Mrs. Evelyn Hall, Jeanes Supervisor, Sumner County, Dr. C. V. Crump, Director of Division of Education of A. and I., Mrs. Algee Outlaw, Jeanes Supervisor, Haywood County, Mrs. A. B. Morrell, Jeanes Supervisor, Giles County, Mrs. F. A. Sanders, Head of the Department of Elementary Education of A. and I., Mrs. F. A. Dobbins, Jeanes Supervisor, Madison County, Miss Lavera Seets, Jeanes Supervisor, Lauderdale County, and Mr. W. E. Turner, State Director of Negro Education.



Dr. Eunice S. Matthew is a professor of educational supervision of Tennessee A. and I. State College and is attached to the Division of Negro Education of the Tennessee State Department of Education as a consultant for in-service teacher education. Under the direction of Mr. W. E. Turner, State Director of Negro Education, she is endeavoring to effect a functional and cooperative program of professional guidance for the local school leaders who are responsible for the improvement of the educational program in the schools of the state.

ALPHA PSI CHAPTER
ALPHA KAPPA ALPHA SORORITY



Reading from left to right: Bobbie Valentine; Charlie B. Law; Catherine Sloss; Helen Dumas, Sentinel; Mary Helen Reed, Assistant Dean of Pledges; Justine Ridley; Dorothy Purham; Madelyn Brewer, Hodegus; Barbara Ward; Lillian Syler; Christine Pearson; Mattie Norris; Pearl Gore; LaMuriel Morris; Clarice Donohoo; Caroline Blanton; Evelyn DuBose; Flora Ingram; Gloria Reagan; Helen Smith, Reporter to the Ivy Leaf; Barbara Walton; Elsie Evans; Valerie Devore; Mabel Williams; Catherine Rivers, Parliamentarian. *Center from left to right:* Yvonne Kirkpatrick, Tamiochus; Francille Briggs, Dean of Pledgees; Jeannine Allison, Anti-Basileus; Evelyn Watts, Epistoleus; Dave Henri Fonney, Basileus; Thelma Baker, Grammateus. *Other members not in the picture:* Dorothy Jarrett, Judia Jarvies, Cleatrice Hoffman, Audra Guyton.

In 1932, on the campus of Tennessee A. and I. State College, a group of promising young women with noble ideals and morals, linked Alpha Psi Chapter to the huge chain of Alpha Kappa Alpha Sorority.

During its seventeen years of existence it has helped to mold into the lives of many young women on the campus its noble purposes. Among our present roster of thirty-four are those who are members of and hold positions in leading organizations including Alpha Kappa Mu, Honorary Scholarship Fraternity; Lambda Eta Sigma, Honorary Literary Society; Laicos S Ronoh Honor Society; College Sunday School, and Student Christian Association. Listed in Who's Who in American Colleges and Universities are members of Alpha Psi Chapter.

IVY LEAF CLUB



OFFICERS

MARGARET ASHWORTH	<i>President</i>
FLORINE GLOVER	<i>Vice-President</i>
GENNIE V. SPENCER	<i>Secretary</i>
IDA KATHERINE JONES	<i>Assistant Secretary</i>
BETTYE VALENTINE	<i>Treasurer</i>
ALMA DALLAS	<i>Chaplain</i>

ROSTER

*Margaret Ashworth
 Alma Dallas
 Dorothy Fore
 Florine Glover
 Delores Henry
 Harriet Holland
 Ola V. Hudson
 Peggy Johnson

Dennis Jones
 Ida Katharyn Jones
 Dorothy Lewis
 Ann Smartt
 *Gennie V. Spencer
 Violet Toney
 Bettye Valentine
 Dorothy Wilkerson

*Does not appear on picture.

ALPHA CHI CHAPTER
 DELTA SIGMA THETA SORORITY



First row—Dorothy Alexander, Carrie Eaves, Albertine Simms. *Second row*—Eurline Couch, Alice Davis, Bettye Coley, Irma Warfield, Suetta Burkett, Lois Morris. *Third row*—Elizabeth Ross, Ruth Gantt, Willa Penn, Bernice McFadden, Gertrude Callier, Vivia Dench, Florence Gammon, Margaretta Morse, Emma Reid, Rosa Parker, Louis V. Bious, Willie M. Walker, Vivian Miller, Evelyn Suggs (not shown), Lamaris Patton (Advisor).

OFFICERS

DOROTHY ALEXANDER	<i>President</i>
CARRIE EAVES	<i>Vice-President</i>
WILLA PENN	<i>Recording Secretary</i>
IRMA WARFIELD	<i>Corresponding Secretary</i>
ELIZABETH ROSS	<i>Treasurer</i>
BETTYE COLEY	<i>Journalist</i>
MARGARETTA MORSE	<i>Chaplain</i>
BERNICE MCFADDEN	<i>Sergeant-at-Arms</i>
EURLINE COUCH	<i>Parliamentarian</i>
VIVIA DENCH	<i>Custodian</i>

Alpha Chi Chapter of the Delta Sigma Theta Sorority was founded on May 9, 1936. As in the minds of the founders of this Sorority and this specified chapter, the thoughts of finer womanhood, scholarship, service and high ideals have been encouraged and practiced throughout the years.

SIGMA GAMMA RHO SORORITY

ALPHA BETA CHAPTER

and

THE AURORA CLUB



Reading left to right, top row—Mrs. H. G. Wilhoite, Advisor; Helen Parrish, Marie Roddy, Mary Walton, Mattie Haston, Yvonne Stockard and George Ola Williams. Second row—The Aurora Club; Hattie B. Barton, Annie L. Roland, Ruth M. Randle, Robbie Martin, Helen Davis, and Bennie Gregory. First row—Annie Laura Hilliard and Ruthie M. Halliburton.

The youngest of such collegiate sororities, Sigma Gamma Rho, was conceived in the dream of Mary Lou Allison Gardner, who with six other Indianapolis school teachers, organized themselves on November 12, 1922. For some time they worked as an incorporated Teacher's Sorority but feeling the need of another organization to further the cause of higher education among college women, Sigma Gamma Rho became an incorporated collegiate sorority on December 30, 1929.

Alpha Beta Chapter of Sigma Gamma Rho Sorority was the first collegiate sorority to be organized on Tennessee A. and I. State College campus on February 9, 1931, with 14 young women who pledged themselves to live by the principles of the organization. This chapter has grown each year and talents have been

developed as social workers, teachers, educational supervisors, lawyers and musicians. Many others are holding high the standard of better womanhood.

With a slogan of "Greater Service, Greater Prosperity," this organization has spread to other colleges and cities until now there are many chapters of Sigma Gamma Rho Sorority scattered throughout the United States from Maine to Florida, from New York to California, and from the Great Lakes to the Gulf of Mexico. Sigma's national project, "The Teen-Town," an innovation of Ethel Smith, past Basileus, designed to aid Negro youth, has done much to curb juvenile delinquency. Sigma Gamma Rho is steadily growing and is doing much to develop a finer and truer character.

ZETA PHI BETA SORORITY

EPSILON ALPHA CHAPTER



AN OCTET OF ZETA CHARM

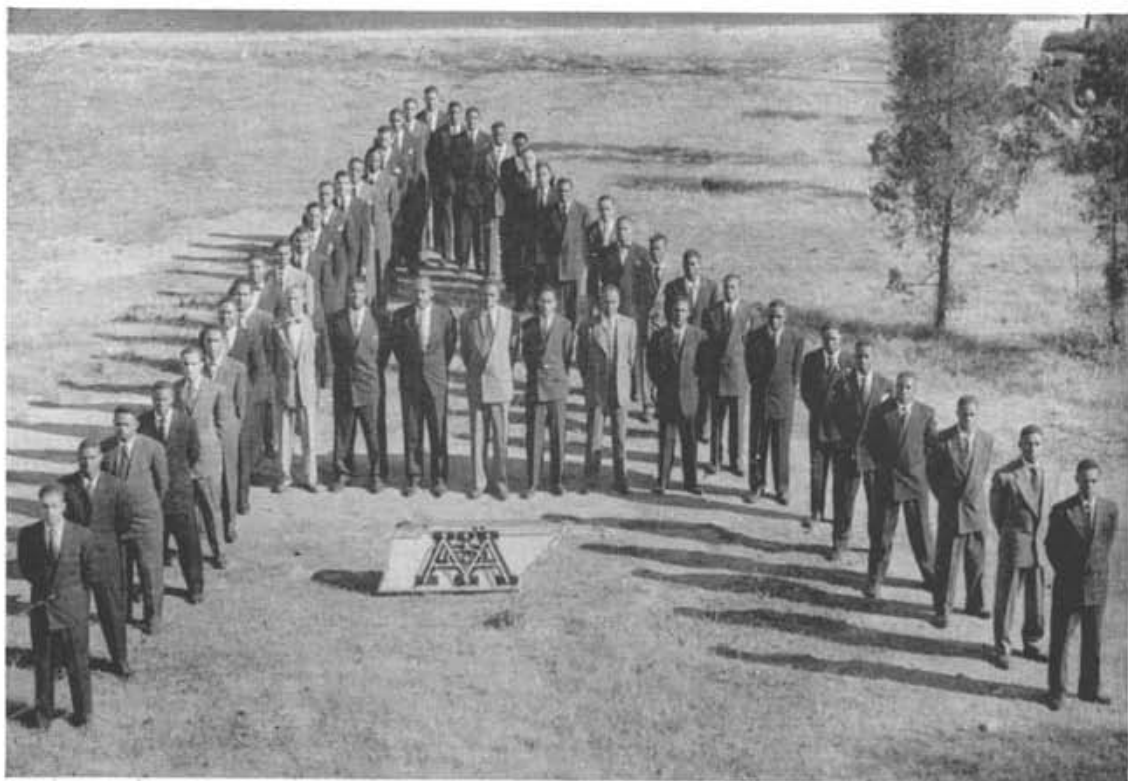
Zeta Phi Beta Sorority was founded on the campus of Howard University April 26, 1920. On April 15, 1933, Epsilon Alpha Chapter of Zeta Phi Beta Sorority was organized on the campus of Tennessee A. and I. State College. Since then many women have been inspired to "Finer Womanhood" through Zeta's portals. Photographed at a casual moment above are the offi-

cers of Epsilon Alpha Chapter of Zeta Phi Beta Sorority. Seated on divan, left to right, are Sorors Frances Echols, Evelyn Newton, Doris E. Simmons, Ella Edith Holmes, Dorothy E. Collins, and Loistine Greenwood. Seated on the floor, left to right, are Sorors Terry C. Mills and Mattie Sue Bledsoe. Omitted are Sorors Naomi Ann Adams and Elsie Mae Robinson.

OFFICERS

DORIS E. SIMMONS	<i>Basileus</i>
TERRY C. MILLS	<i>Anti-Basileus</i>
ANN NAOMI ADAMS	<i>Dean of Pledges</i>
EVELYN NEWTON	<i>Epistoleus</i>
FRANCES E. ECHOLS	<i>Grammateus</i>
ELLA EDITH HOLMES	<i>Tamiochus</i>
ELSIE MAE ROBINSON	<i>Parliamentarian</i>
MATTIE SUE BLED SOE	<i>Hodegus</i>
DOROTHY COLLINS	<i>Reporter to Archonian</i>
LOISTINE GREENWOOD	<i>Sentinel</i>
SOROR ANNA G. SASSER	<i>Advisor</i>
SOROR LILLIAN BARBOUR	<i>Advisor</i>

BETA OMICRON CHAPTER
ALPHA PHI ALPHA FRATERNITY



Left to right, (in angle) Brothers: William Gilkey, Jonathan Taylor, David Kimbell, Lemuel Joyner, William Dorsey, Edgar Guinn, Corresponding Secretary; Benjamin Mitchell, Singer Buchanan, William Turner, Gilbert Mason, Robert Jackson, President; Marcus Floyd, James Bland, Vice-President; Herbert Ryan, John Armstead, Treasurer; Turner Brown, William Harris, Ernest Davis, Ralph Mullins, Sandford Cox, Joseph Willie, Scott Saunders, Charles Robinson, William Lawson, Associate Editor to Sphinx; Herman Hyatt, Lemuel Hutch, Veledis Carter, Joseph Gunnell, Advisor to Sphinx Club; Clarence Reed, Co-advisor to Sphinx Club; Andrew Jackson, Andrew Goodrich, Pelham Chatman, Robert McFerrin, Nathaniel Holloway, Joseph Williams, George Patterson, Richard Stephenson, Russell Stockard, Arthur Williams. *Left to right (on crossbar) Brothers:* James K. Anthony, Clinton Crooks, Faculty Advisors; Harry Lash, Lewis J. Willie, Jr., Dean G. W. Gore, Lewis R. Holland, Hinton C. Jones, Faculty Co-advisors.

In this era of conflicting issues and uncertain times, the Brothers of Beta Omicron Chapter re-emphasize the ideals of manly deeds, scholarship, and universal regard and love for all mankind, the ideals upon which the fraternity was founded.

Beta Omicron Chapter of Alpha Phi Alpha Fraternity has played and continues to play a commendable role here at Tennessee A. and I. State College in enabling the fraternity to voice ever louder its motto: "First of all, servants of all, we shall transcend all."

THE SPHINX CLUB



Seated, left to right—Samuel Lee (Sergeant at Arms), Anderson Petty (Secretary), David Newborn, Robert Tucker (Chaplain), Alfonso Sherman (President), Alan Searcy (Treasurer); *Standing*—Lloyd Fletcher (Vice-President), Vincent Dench, Samuel McKay, Howard Young, Leonard Oxley (Assistant Secretary), absent from picture.

The Sphinx Club of Beta Omicron Chapter of Alpha Phi Alpha Fraternity, Inc., is composed of men with great ambition and inspiration to become members of Alpha Phi Alpha Fraternity. By their constructive

participation and cooperation in various scholastic activities on this campus, these Sphinx-men are endeavoring to carry on the good work that began fourteen years ago when the organization was established.

ALPHA THETA CHAPTER
KAPPA ALPHA PSI FRATERNITY



Standing, left to right: Emmett Brown, Willie M. Moore, Cecil Hardy, Algje Oldham, Aaron A. DuBois, Nathaniel Taylor, Carl E. White, Walter Epps, Joshua Grider, Marvin Bridges, J. A. Welch, James W. Stubbs, George Sheffield, Curtis Hixon, George Hunter, Estill Covington, James Watson, James Hudson, Kenneth McVoy, Adolphus W. Palmer, William Johnson/Oscar F. Smith, Hildred Shumake. *Seated:* Walter Smith, William Stinson, Penn Walker, Paul Kidd, William M. Scott, Clarence Crutchfield, John Wyatt, James P. Chambers, Robert H. Roane, William T. Jackson. *Not included in photograph:* Carl Crutchfield, Frank Lewis, Clifford Childs, Isaac White, Robert Anderson, Alvin Grant, Robert Fowlkes, Horace D. Goode, George Hughes, John Jenkins, William B. Ballard, Spencer Davis, Edward Hayes, Robert Radford, Vincent A. Bunch, Merle R. Eppse.

OFFICERS

WILLIAM M. SCOTT	<i>Polemarch</i>
CLARENCE CRUTCHFIELD	<i>Vice-Polemarch</i>
WILLIAM D. STINSON	<i>Keeper of Records</i>
JAMES W. STUBBS	<i>Keeper of Exchequer</i>
WILLIAM T. JACKSON	<i>Strategus</i>
HORACE D. GOODE	<i>Lieutenant Strategus</i>
JAMES P. CHAMBERS	<i>Dean of Pledgees</i>
VINCENT A. BUNCH	<i>Historian</i>
ROBERT H. ROANE	<i>Journalist</i>
ALGJE OLDHAM	<i>Chaplain</i>

FACULTY ADVISERS

MERLE R. EPPSE	<i>Director of the Division of History</i>
JAMES A. WELCH	<i>Business Manager</i>
HENRY C. HARDY	<i>Instructor in Farm Management</i>

THE SCROLLERS CLUB



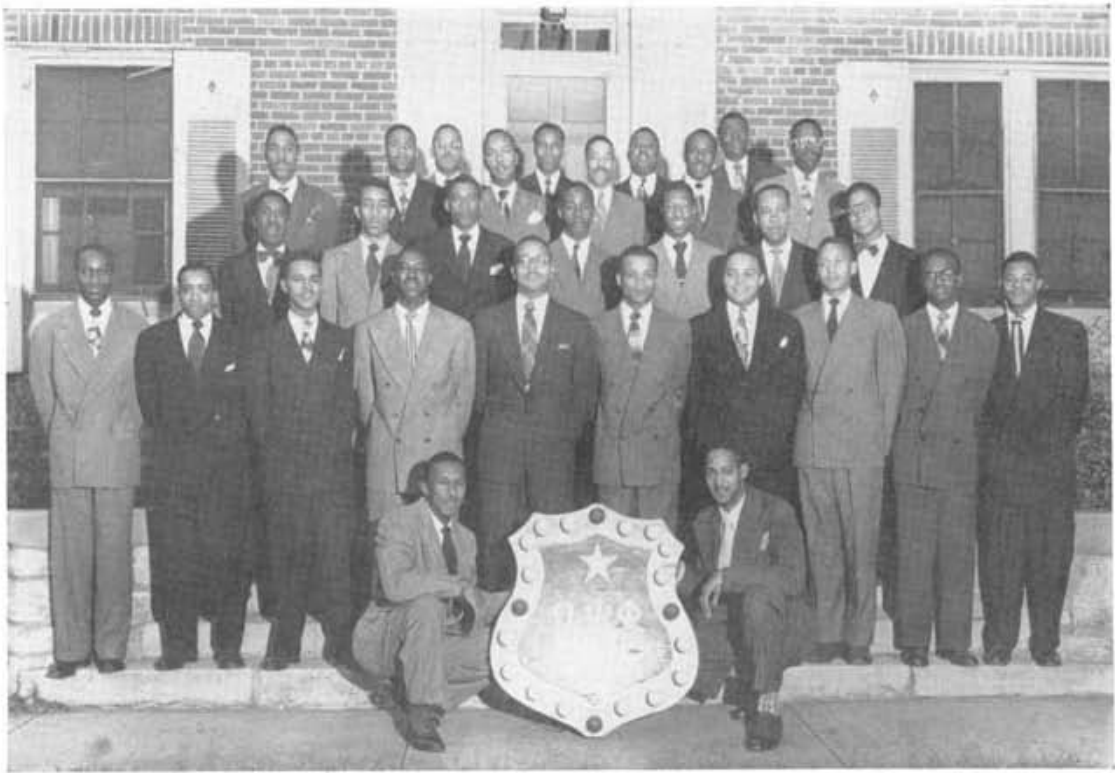
The Scrollers Club as an integral part of Kappa Alpha Psi Fraternity was founded at Ohio State University, May 15, 1919, for the purpose of unifying the men who aspire to membership in the fraternity.

The Scrollers Club of Alpha Theta Chapter has achieved in music, art, athletics and scholarship. It has also sponsored cultural affairs on the campus including Sunday School program, Annual Faculty Tea, and an Annual Football Squad Banquet in the Fall. At the History Study Club dance, the Scrollers sweetheart, Miss Dorothy Lewis, was chosen Sweetheart of the ball by Mrs. Marva Louis.

OFFICERS

CHARLES HAMILTON	<i>President</i>
WILLIAM ABERNATHY	<i>Vice-President</i>
SAMUEL ANDREWS	<i>Secretary</i>
EUGENE BOND	<i>Treasurer</i>
WILEY WILSON	<i>Parliamentarian</i>
CURTIS ANDERSON	<i>Sergeant at Arms</i>
WILLIE STEWARD	<i>Business Manager</i>
WILLIE McMURRAY	<i>Chaplain</i>

RHO PSI CHAPTER OMEGA PSI PHI FRATERNITY



OFFICERS

DR. CARL M. HILL	<i>Adviser</i>
DR. THOMAS E. POAG	<i>Adviser</i>
THOMAS E. WOODS, JR.	<i>Basileus</i>
JOSEPH RUCKER	<i>Vice-Basileus</i>
JOHN C. OLIVER	<i>Keeper of R. and S.</i>
RALPH C. GILL	<i>Keeper of Finance</i>
JOSEPH MARTIN	<i>Neophyte Commandant</i>
ENOCH T. WILLIAMS	<i>Chaplain</i>
GEORGE TURNER	<i>Keeper of Peace</i>
RAYMOND BUCKNER	<i>Director of Music</i>
GEORGE MOSBY	<i>Director of Athletics</i>
JAMES KENDRICK	<i>Parliamentarian</i>
EMMETT GOODMAN	<i>Chapter Editor</i>

ROSTER

Allen, Paul	Goodman, Emmett	Nelson, O'Ferrell	Smithson, Marion
Atkins, William	Kendrick, James	Oliver, John C.	Springer, John
Bryant, Robert	Knox, Lee	Outland, John	Stuart, Nick
Buckner, Raymond	Lawson, Thomas	Pearson, Roland V.	Thomas, Wade
Carpenter, Julius	Lee, Robert	Patterson, Melvin	Turk, Richard
Cook, Longino	Martin, Joseph	Reeves, Wayne	Turner, George
Crews, Bynum	Merritt, James	Robinson, Ben	Wade, James
Driver, Howard	Montgomery, William	Rucker, Bennie	Williams, Enoch T.
Flowers, Harris	Morris, Norman	Rucker, Joseph	Wilson, Louis
Gill, Ralph C.	Mosby, George	Saulters, John	Woods, Thomas
Glanton, Raymond	Motley, Frank	Sharp, Alfred	Woods, William
			Young, Clyde

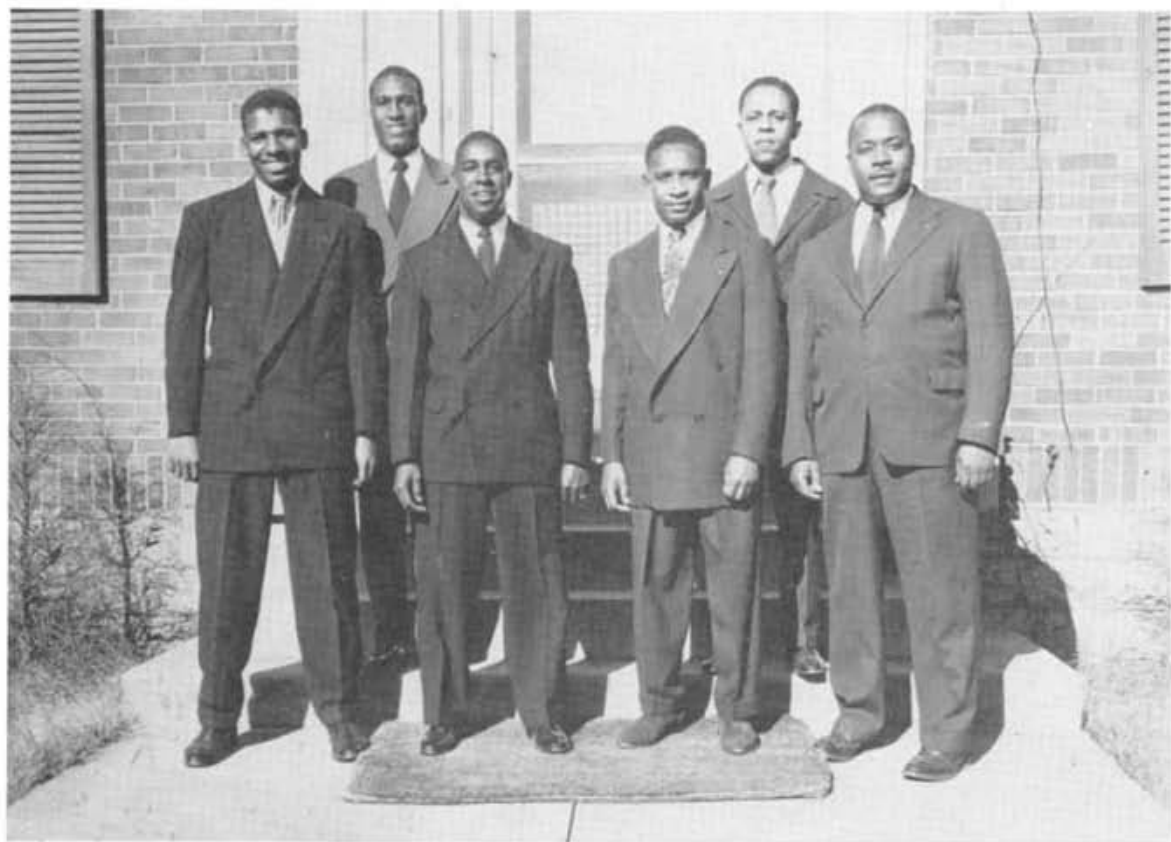
Rho Psi Chapter of Omega Psi Phi Fraternity enjoyed one of its most successful years during 1948-49. Ten new brothers were welcomed into the Fraternity during the Spring quarter and seventeen during the Fall quarter.

Rho Psi Chapter regrets that it will lose its brothers via graduation in June. These brothers are: Roland V. Pearson, Joseph Rucker, Julius Carpenter, Wayne Reeves, Alfred Sharp, Wade Thomas, Enoch T. Wil-

liams, Thomas Woods, John Outland, Frank Motley, Nick Stuart, James Merritt, O'Ferrell Nelson, William Woods, William Atkins, Robert Bryant, George Turner.

We, the members of Rho Psi Chapter of Omega Psi Phi Fraternity are looking forward to a year of greater success. We are ever striving with a will to do or die. Our great aim is to uphold our four cardinal principles: Manhood, Scholarship, Uplift, and Perseverance.

LAMPADOS CLUB
 RHO PSI CHAPTER
 of
 OMEGA PSI PHI FRATERNITY



OFFICERS

ROBERT MOSBY	<i>President</i>
WILLIAM SWEET	<i>Vice-President</i>
LEON BRADFORD	<i>Secretary</i>
JAMES BALLARD	<i>Assistant Secretary</i>
AGUSTUS WILLIAMS	<i>Treasurer</i>
RALEIGH WYNNE	<i>Chaplain</i>

ROSTER

Robert Aaron	William Fowlkes	Robert Mosby	Agustus Williams
James Ballard	George T. Halliburton	Charles Simmons	Raleigh Wynne
Leon Bradford	Floyd Mix	William Sweet	

We, the Lamps of Dear Omega, are fighting hard to make our goal, fighting hard to walk the road which men have gone both young and old.

ZETA ALPHA CHAPTER
PHI BETA SIGMA FRATERNITY



Front row from left to right: Robert Holston, Memphis; Lewis Roberson, Nashville; Edward LaPrade, Hopkinsville, Ky.; John Davis, Memphis; Earl Sasser, Jr., Nashville; R. Omar Robinson, Memphis; John Watkins, Nashville; John Harrell, Gadsden, Ala.
Back row from left to right: William Sims, Jackson; Richard Norvell, Dallas, Tex.; William Callian, Memphis; Charles Register, Los Angeles, Calif.; Eben King, Owensboro, Ky.; William Suggs, Memphis; Charles Taylor, Little Rock, Ark.; Wilfong Wilson, Middletown, Ohio; Robert Stewart, Johnson City; James Cox, Corinth, Miss.; Ernest Franklin, Jackson, Miss.

OFFICERS

FRATER WILLIAM SUGGS	<i>President</i>
FRATER EBEN F. KING	<i>Vice-President</i>
FRATER WILLIAM A. HURD	<i>Secretary</i>
FRATER CHARLES REGISTER	<i>Corresponding Secretary</i>
FRATER EDWARD LA PRADE	<i>Treasurer</i>
FRATER ERNEST FRANKLIN	<i>Dean of Pledges</i>
FRATER WILLIAM I. SIMS	<i>Chaplain</i>
FRATER OMAR ROBINSON	<i>Director of Music</i>
FRATER EARL L. SASSER	<i>Business Manager</i>
FRATER CORNELIUS JONES	<i>Athletic Director</i>

ROSTER

Leon Griffin	Samuel Bryant	Wilfong Wilson	William Callian
James Cox	Abner DeBerry	Robert Holston	Eugene Elder
John Davis	Richard Novelle	John Harrell	Robert Stewart
Alfred Gardner	Charles Taylor	Lewis Roberson	

MOTTO
Culture for Service and Service for Humanity

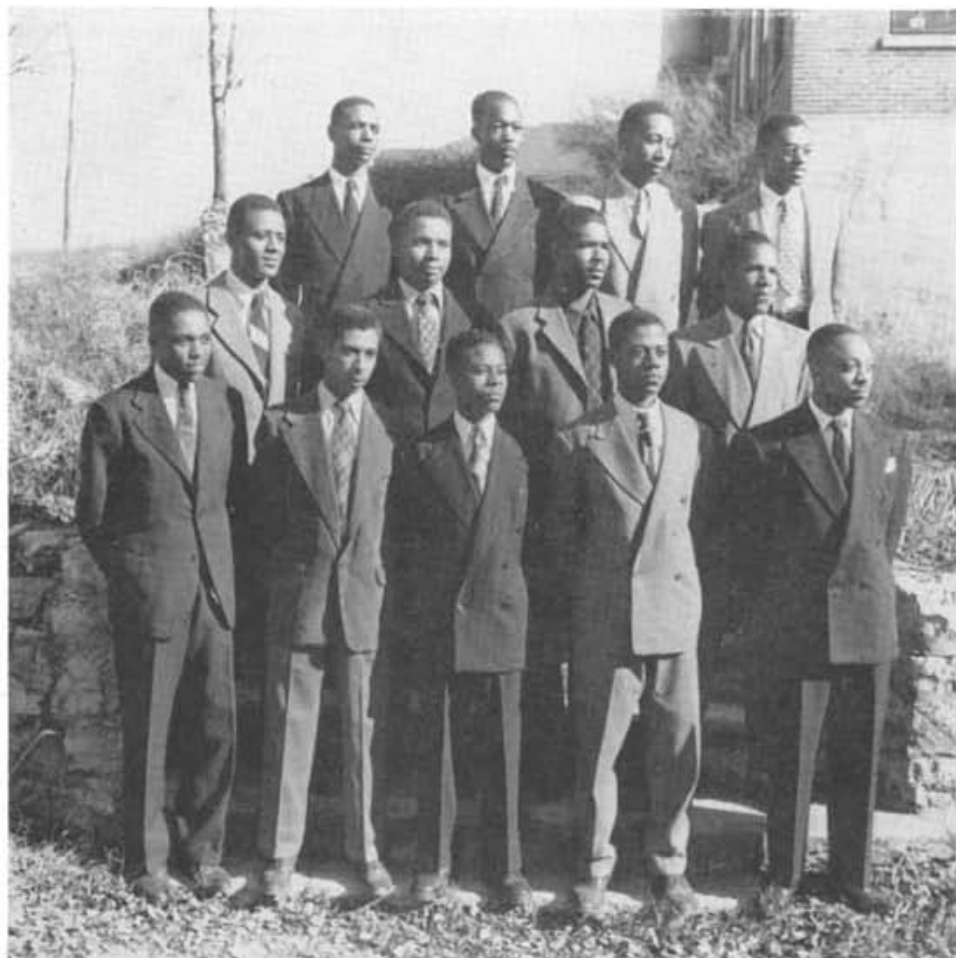
COLORS
Blue and White

GOAL
To Develop and Perpetuate Brotherhood

FLOWER
White Carnation

EMPHASIS
Moral Character—Scholarship

THE CRESCENT CLUB
OF
PHI BETA SIGMA FRATERNITY



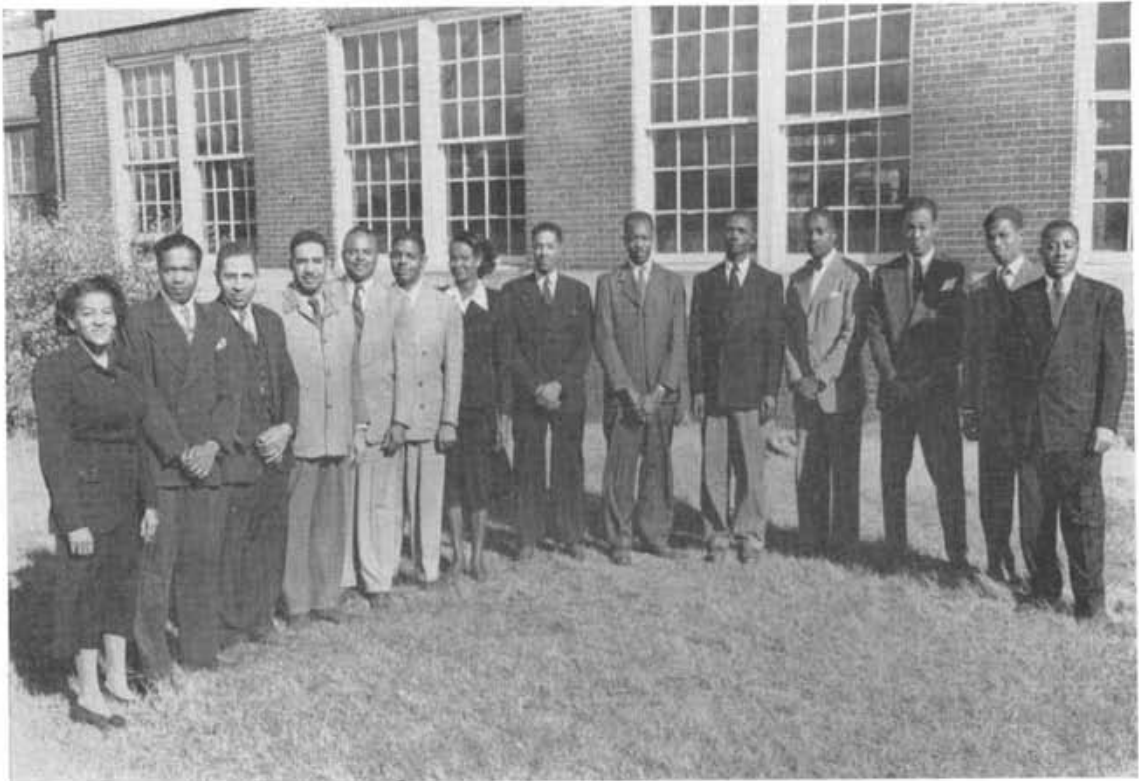
OFFICERS

CHARLES JONES	<i>President</i>
JOHN D. SPEIGHTS	<i>Vice-President</i>
ROBERT MAJORS	<i>Secretary</i>
EDWARD THOMPSON	<i>Assistant Secretary</i>
ALONZO B. JORDAN	<i>Treasurer</i>

ROSTER

Basit Brinkley	William Simmons	James E. Bailey
Charles Turner	Timothy T. Graves	Lloyd Parmer
James K. Golden	Herbert Deberry	James Buchanan
John T. Williams	Walker D. Bond	Harold Street
Wiley Porter	Eugene Campbell	Roger Williams
	Thomas H. Williams	

A G R O N O M Y C L U B



OFFICERS

GEORGE O. THOMPSON	<i>President</i>
WILEY W. L. PORTER	<i>Vice-President</i>
MARTHA ELLEN DYSART	<i>Secretary</i>
ASHLEY B. CRAIG	<i>Treasurer</i>

MEMBERS

Leon Griffin	Joe Singleton
Tony Webb	Marcus Floyd
John F. Buchanan	William Coles
George B. Patterson	Booker Hayes

ADVISERS

DR. M. F. SPAULDING

MR. F. E. WESTBROOKS

TENNESSEE A. & I. AVIATION CLUB



The Aviation Club was founded in 1946 with Mr. U. L. Gooch serving as president, who reigned through a rough two-year period, and accumulated a membership of approximately fifteen aviation enthusiasts. Since that time, Mr. William Sims has taken over the reins, and has boosted his membership to over thirty members who are interested in flying activities, social events, or anything pertaining to aviation in general. Interest is growing by leaps and bounds, and in the very near future, we hope to boast of a membership of over 100 active members. So come on, fellow students, get air-minded and join the Bird Gang. Our organization comes under the sponsorship of the Division of Engineering and Industrial Education, with Mr. C. M. Ryan as adviser. Work from this Division has advanced to the reality of offering a B.S. degree in Aviation Education.

ALPHA KAPPA MU HONOR SOCIETY



OFFICERS

MR. ROBERT JACKSON	President
MR. GILBERT MASON	Vice-President
MISS JEANNINE ALLISON	Secretary
MRS. PEARL W. GORE	Treasurer
MRS. SABRA S. CONNER	Corresponding Secretary
MISS PEARL MAYO GORE	Reporter
MRS. ALMA DUNN JONES	Keeper of Records and Seal

ADVISERS

DR. G. W. GORE, JR.

MRS. MARY F. CARTER

MEMBERS

Miss Lois Daniel
Miss Ruby Prigmore
Mrs. Alma Dunn Jones
Dr. G. W. Gore, Jr.
Dr. W. S. Davis
Miss Christine Alexander
Prof. A. V. Boswell
Mrs. Martha Brown
Mrs. Janie Elliott
Mrs. Mary F. Carter
Mrs. Mildred K. Gaines
Mrs. Pearl W. Gore
Mrs. Frances M. Hudson

Dr. Virginia S. Nyabongo
Mrs. Rachel Patillo
Mrs. Arthuryne Welch
Mr. Arnold Love
Mr. Harold Love
Mrs. Beulah Wilson
Mrs. Lavinia Dumas
Miss Jeannine Allison
Miss Audra M. Guyton
Miss Dorothy M. Jarrrett
Miss Evelyn V. Watts
Mrs. Mabel B. Crooks
Miss Gladys Burgess

Miss Helen Dumas
Miss Pearl Mayo Gore
Mr. Robert Jackson
Miss Irene Henry
Mr. Herman Hyatt
Mr. Edward LaPrade
Mr. Willie McCallister
Mrs. Gertrude Callier
Mr. Gilbert Mason
Mrs. Geraldine B. Fort
Miss Mary Gudger
Mrs. Mary Clay Pinkston
Miss Alice Proctor

Miss Louis V. Bious
Miss Laura M. Averitte
Mr. Carl Crutchfield
Miss Ruth Gantt
Mr. Edgar Guinn
Miss Yvonne Kirkpatrick
Mr. Daniel Provine
Mr. Herbert Ryan
Mr. Arthur Williams
Mr. Joseph Williams
Miss Jeanetta Hudson
Mr. Frank M. Brown
Miss Audrey E. Greene

One of the most outstanding organizations on the campus is Alpha Kappa Mu, a national honorary scholastic society open to students of junior and senior classification who maintain an accumulative average of 3.5.

Phi Beta Tau was organized at Tennessee State College on March 26, 1931. It has focused its utmost efforts toward the promotion of high scholarship, the encouragement of sincere and zealous scholastic endeavor, the cultivation of a high order of personal living, and the development of an appreciative attitude toward others who possess well employed intellectual capacities. It further purposes to present the scholar as a man thinking as well as for the service of mankind.

In 1939, the organization became the Phi Beta Tau chapter of Alpha Kappa Mu, an Honor Society now consisting of thirty-four chapters located in prominent Negro Colleges in thirteen states.

Phi Beta Tau chapter sponsors annually a cultural chapel program, a party honoring "Honor Roll" students, and a barbecue.

Miss Louis V. Bious and Mr. Joseph Williams were representatives of the chapter at the eleventh annual meeting, February, 1949, which was held at Morris Brown College, Atlanta, Georgia.

THE BAPTIST STUDENT UNION



The Baptist Student Union, B.S.U., is the organization which serves as a strong link which keeps the student in touch with the local church. The movement has the support of all Baptist ministers of the city, even though many of its most active workers are members of other denominations.

The program consists of participation in campus activities such as Quiet Hour, Sunday School, Design for Living Week, and others. Each second and fourth Sunday, a city bus is chartered to carry students to a local church in order that they may satisfy the need for worship. A Mid-Day Meditation

Period is held each Friday, and also a Bible Study Course.

The active cooperation of the National Baptist Convention, Southern Baptist Convention, and the National Baptist Convention, Inc., is an asset that is enjoyed by the B.S.U.

The top picture shows the Executive Council and several of the most active workers. The lower picture shows a group of students before leaving for worship with the First Baptist Church, East Nashville, after hearing a stirring address at Sunday School by the Rev. Paul Hayes, pastor of the Kayne Avenue Baptist Church.

OFFICERS

JOSEPH WILLIAMS	President
EVELYN WATTS	1st Vice-President
WILLIAM BANKS	2nd Vice-President
JOSEPHINE EWING	Secretary
JAMES BAILEY	Treasurer
JEANNINE ALLISON	Co-Director of Music
CATHRYN RIVERS	Co-Director of Music
WILLIAM LAWSON	Publicity Director
MRS. MATTIE L. GORDAN	Faculty Adviser
MR. SCOTT E. GRINSTEAD	Student Secretary
REV. IRA GOLPHIN	Pastor-Adviser

BETA KAPPA CHI SCIENTIFIC SOCIETY

XI CHAPTER



Seated from left to right: Mrs. Annie G. Sasser, *Adviser*; Miss Julia Hawkins, *Treasurer*; Dr. Marion R. Myles, Dr. H. B. Crouch, Mrs. Martha Allen, Miss Ruby Prigmore, Miss Gladys Burgess, *Recording Secretary*. Standing, left to right: Messrs. Arthur Williams, Nathaniel Holloway, Edgar Guinn, *Reporter*; Herman Hyatt, *Vice-President*; Ardenia Rambeau, Thomas Hughes, Herbert Ryan, Robert Jordan, Gilbert Mason, John Armstead, *President*; A. V. Boswell, Dr. Major Spaulding, *Auditor*. Members not pictured are: Dr. C. M. Hill, Mrs. Mary E. Hill, Miss Catherine Maryland, *Corresponding Secretary*; Mr. D. A. Williston and Dr. George W. Gore, Jr.

Beta Kappa Chi, an honorary scientific society, was founded at Lincoln University in Pennsylvania, January 31, 1923, for students and scholars who had distinguished themselves in the field of science. Xi Chapter, at Tennessee A. and I. State College, was organized March 8, 1944 and has since done much to stimulate interest in science among students and faculty.

The program of the Chapter is as varied as are the scientific interests of its individual members. The connecting chain which is interwoven throughout all activities is made up of these links: dissemination of scientific knowledge, encouragement of research activities and active participation in creative endeavors. All efforts lead toward the main objective—perpetuation of the scientific spirit.

PROGRAM FOR YEAR 1948-49

October 14—Business Meeting

November 11—Movies, "Atomic Energy," "Atomic Power," Mrs. Martha Allen.

December 9—Glass Blowing Demonstration, Dr. Clyde R. Dillard.

January 6—Survey of Synthetic Medicinals, Mr. Gilbert R. Mason.

March 10—Mental Health, Dr. S. O. Roberts.

April 7—Topics to be selected, Dr. Jerry H. Coleman.

April 21—Problems Involved in the Design of a Water Supply for the City of Monrovia, Liberia, Mr. William C. McNeill, Jr.
Election of Officers.

May 12—Initiation, Honor Speaker.

THE BIOLOGY CLUB



The Biology Club was organized in September, 1916 here at the college. The membership has steadily increased. At present the enrollment is fifty-nine (59), consisting mainly of majors in the field of Biology.

The purposes of the club are to better acquaint the majors with the biology department, use of equip-

ment, and staff; to stimulate interest in research and to enlighten them on the numerous discoveries and improvements that are being made in the scientific world. The latter purpose is attained by presenting noted scientists and educators at the various meetings during the year.

OFFICERS

E. T. WILLIAMS	<i>President</i>
JOHN ARMSTEAD	<i>Vice-President</i>
JAMES C. BLAND	<i>Treasurer</i>
ALLEAN JONES	<i>Secretary</i>

MEMBERS

Nettie Anderson
Gladys Austin
Edward Bond
Zelmer Bothic
Edna Bryson
Ray Cade
Eugene Campbell
George Canty
Gladys Carlton
M. S. Carrington
Juanita Caruthers

Ghentel Chambers
Moses Clay
Claude Cole
Jeanniane Coleman
McVicker Coleman
Major Craighead
Juanita Daniels
Marvin Douglass
Theron Edwards
Laura Evans
James Faison

Charles Flippen
Jeanne Holland
Mary Johnson
Sylvester Johnson
Theodore Jordan
Dorothy King
Helen Parish
Betty Jo Roberts
Sarah Simpson
James W. Smith
Thomas Smith

John Speights
David Taylor
L. H. Thomas
Mary Thomas
Gene Tyler
Julius Tyler
Emmitt Walker
Ramona Williams
Calvin Wills
Margaret Wilson
Will Wilson
Harold Winbush

ADVISERS

MR. R. H. JORDAN

MR. C. M. LEATHERS

THE BOTANICAL FIELD CLUB



Front row—Kneeling left to right: Dr. Marion R. Myles, Martha E. Dysart, Mrs. George O. Thompson. Back row—Standing: James Stewart, Tony Webb, Samuel C. Lee, Joe V. Singleton, Wiley Porter, Leon Griffin, Theodore Giles, Robert Aaron, Joseph S. Simmons, George O. Thompson, and George B. Patterson.

OFFICERS

ROBERT AARON	<i>President</i>
JOE V. SINGLETON	<i>Vice-President</i>
MARTHA E. DYSART	<i>Secretary</i>
WILEY W. L. PORTER	<i>Treasurer</i>
DR. M. R. MYLES	<i>Adviser</i>

PROGRAMME OF WORK

This club meets the second and fourth Monday nights in the month. The programme is made up of student participation and lectures from out-

standing authorities in the fields of Biology, Agronomy, Plant Physiology and other plant areas.

CLUB MOTTO

Only those who have the patience to do simple things perfectly will acquire the skill to do difficult things easily—Henry F. Henrich.

CHEMISTRY CLUB



First row, left to right—Juanita Daniels; Marie Kirk; Richard Stephenson; Bettye Roberts, secretary; Edgar Guinn; Nathaniel Holloway; Dorothy Alexander; Arthur Williams, President; Jeff McKinnie. Second row, left to right—Naomi Daniels; Isaiah Glover, Treasurer; Jeanne Hollan; Eleanor McWherter; Calvin Wills; Edward Bond; James Smith; Ghentel Chambers; Ella Edith Holmes; Miss Prigmore; Flossie Love; Lillie Rivers. Third row—Mr. Gandy; Gilbert Mason; Mr. Lowe, Faculty Adviser; Noah Jones; Theodore Jordan; Dr. Dillard; James Stubbs; James Crutchfield; Miss Hawkins; Harold Winbush. Members of the chemistry club not appearing on picture are: Dr. Hill; Mrs. Hill; Herbert Ryan; William Hinton; Mr. Senter; Robert Walker and Doris Simmons.

The Chemistry Club of 1948-49 has announced a Freshman scholarship award of twenty-five dollars to help stimulate proficiency in general college chemistry. In addition, the club is sponsoring a Biography contest to acquaint students of science with outstanding con-

temporaries and their contributions to natural and applied sciences. Their program for the year includes many interesting features such as periodic reviews, guest speakers and movies.

ADVISERS

MRS. MARY E. HILL

DR. CLYDE R. DILLARD

MR. JAMES U. LOWE

THE CHILDREN'S THEATRE CHRISTMAS PARTY



The Children's Theatre is under the direction of Miss Laura M. Averitte. It is a laboratory for English 261 which is Children's Literature, and for Speech and Drama majors and minors who are interested in plays for children. It is under the supervision of the Department of Speech and Drama. The children trained in the Children's Theatre are often used in the major productions of the Tennessee State Players' Guild.

The Children's Theatre program for 1948-49 includes "The Dicken's Christmas Carol" by Julian Lee (The Lionel Barrymore version)—December 19th; "North Star Shining" by Hildegard Hoyt Swift—February 12th; "The Emperor's New Clothes," (A Fantasy)—May 9th.

The parents of the children are invited to the productions and parties. The parents often assist with the productions sponsored by the Children's Theatre.

COLLEGIATE COUNSELORS



OFFICERS

JEANNINE ALLISON	<i>Executive Counselor</i>
DOROTHY JARRETT	<i>Associate Counselor</i>
HELEN DUMAS	<i>Secretary-Treasurer</i>
AUDREY GREENE	<i>Assistant Secretary</i>
CATHERYN RIVERS	<i>Program Chairman</i>
WILLIAM LAWSON	<i>Publicity Director</i>
JIMMUIR COTTON	<i>Chairman, Junior Counselors</i>
DR. VIRGINIA S. NYABONGO	<i>Adviser</i>

MEMBERS

Jeannine Allison
William A. Banks
Alfred Bonner
Madelyn Brewer
Lazzerow Brown
Alfonzo Butts
Jimmuir Cotton
Alma Dallas
Clifton DeMarks
Helen Dumas
Reverdy Dudley
Elese Evans
Andrew Goodrich
Pearl M. Gore

Audrey Greene
William Green
Edgar Guinn
James Hudson
Ola G. Hudson
Gladys Jackson
Dorothy Jarrett
Ruth Jenkins
Delores Johnson
Peggy Johnson
Ida K. Jones
Yvonne Kirkpatrick
Betty Lawler
Edward LaPrade

William Lawson
Gilbert Mason
Tommie Morton
Ralph Mullins
Irene Nelson
O'Ferrel Nelson
Algie Oldham
Willie Penn
Emmit Reeves
Catheryn Rivers
Omar Robinson
Elizabeth Ross
Herbert Ryan
Wilson Samuels

William Scott
Alfonzo Sherman
Catherine Sloss
Helen Smith
Robert Southall
Richard Stevenson
Donzaleigh Turman
Barbara Ward
Evelyn Watts
Augusta Whitlow
Arthur Williams
Joseph Williams

Collegiate Counselors are sophomores, juniors, and seniors, who, because of their leadership ability and personality, have been chosen to assist with the orientation of freshmen and new students and other phases of the College Guidance program. Among the Collegiate Counselors are Senior Counselors who have one year or more experience as Counselors, and Junior

Counselors with less than a year's experience.

Activities of the Collegiate Counselors during 1948-49 include participation in planning and carrying out the Freshman Week Program, Orientation Programs for the spring and winter quarters, Freshman Teas, and informal student guidance in personnel and other matters pertinent to college life.

ELEMENTARY EDUCATION CLUB



OFFICERS AND EXECUTIVE MEMBERS

The Elementary Education Club, the oldest educational organization on the campus, was founded in 1925. It has as its purposes, to promote a greater degree of cooperation among elementary teachers, to serve as a contact agency for elementary teachers throughout the state, and to build character, develop personality and increase scholarship among prospective teachers.

The club has contributed much to the social and cultural development of the college. For more than fifteen years the club has sponsored the National American Education Week program at the college.

Beginning at the top and reading from left to right: Mrs. Ruth Forde, Nashville; Willie C. Cowan, Gallatin; Augusta Whitlow, Jackson; Mrs. Velma Harrison, Nashville; Joseph Coakley, Gallatin; Mrs. Mary Walton, Gallatin; Mary F. Ramsey, McMinnville; Garfield Stokes, Durant; Surleaster Crowder, Whiteville; Mrs. Mary Banks Hart, E. St. Louis; Lillian Syler, Winchester; Lillian Pulce, Mt. Pleasant; Rubye Jean McKinney, Bolivar; Mrs. Judia Washington Jarvies, Chicago; Leatrice Stephenson, Columbia; Rae E. Hudson, Nashville, President of the Club; Emmitt Goodman, Covington; Mrs. F. A. Sanders, Adviser.

MISS ELEMENTARY EDUCATION CLUB AND HER ATTENDANTS

Reading from left to right: Barbara Walton, Chicago; Mary F. Ramsey, McMinnville; Parrish Johnson, Nashville; Juanita Reel, Chattanooga; Rubye Jean McKinney, Bolivar, center and "Miss Elementary Education Club."



FUTURE BUSINESS LEADERS OF AMERICA



The F. B. L. A. is an organization of students in business administration and education. Its activities are designed to interest those students in the college who are concerned with activities connected with the field of business. The entire Business Staff serves in an advisory capacity. A monthly forum, sponsored by the club, brings to the students the opportunity of close association with successful business men in the field.

The "Business Leader" is the monthly publication of the organization. Officers for the year are as follows:

OFFICERS

MR. WILLIAM BANKS	<i>President</i>
MISS WILLIE MAE WALKER	<i>Secretary</i>
MR. ROBERT SOUTHALL	<i>Treasurer</i>
MISS YVONNE KIRKPATRICK	<i>Editor</i>
MRS. M. K. GAINES	<i>Adviser</i>

LE CERCLE FRANCAIS



Pictured above are member of Le Cercle Francais. They are (from left to right): Robert Lee Glanton, Samuel F. Yette, Dennise Jones, Fred Lane, Calvin Moore, Mrs. Gladys Kellogg, Angelene Stone, and Mrs. A. E. Meriwether. Members not present on the picture are: Harold Byrd, Gloria Reagan, Doris Simmons and Maurice Warner.

OFFICERS

SAMUEL F. YETTE	<i>President</i>
MAURICE WARNER	<i>Vice-President</i>
DORIS SIMMONS	<i>Secretary</i>
ANGELENE STONE	<i>Treasurer</i>

PURPOSE

The purpose of Le Cercle Francais is that the students finally gain a live appreciation of the French culture. With only a few exceptions, they are the students who give the discourse.

Two times each week, they are assembled in the Cafeteria where they eat lunch and dinner with their faculty advisors, Mesdames Meriwether and Kellogg. They speak French exclusively at these meals.

MEMBERS

Harold Byrd
Dennise Jones
Robert L. Glanton

Fred Lane
Calvin Moore

Doris Simmons
Gloria Reagan

Samuel Yette
Angelene Stone
Maurice Warner

HISTORY STUDY CLUB



The History Study Club Annual "SWEETHEART" Dance, December 4, 1948, Crystal Ballroom, Tennessee A. and I. State College. Miss Evelyn Suggs (center holding flowers) was crowned "MISS HISTORY STUDY CLUB." Miss Suggs, a Junior History major, Nashville, Tennessee, member of Delta Sigma Theta Sorority. Reading from left to right—Miss Mary F. Seibert, Dyersburg, Tennessee, Freshman Attendant; Miss Rosa Parker, Birmingham, Alabama, Senior Attendant; Miss Suggs, "MISS HISTORY STUDY CLUB;" Miss Jewel Hall, Nashville, Tennessee, Sophomore Attendant; Miss Earline Lewis, Memphis, Tennessee, Junior Attendant.

OFFICERS

MR. RUSSELL STOCKARD, Nashville, Tenn.	<i>President</i>
MR. RALPH MULLINS, Pikeville, Ky.	<i>Vice-President</i>
MISS LOIS WILSON, Pikeville, Ky.	<i>Secretary</i>
MR. PAUL THOMPSON, Nashville, Tenn.	<i>Treasurer</i>

ADVISERS

Mr. James K. Anthony	Mr. Norman Walton	Mr. Elze Bogan	Mr. Frederick McKinney
Miss Princess Bowen	Prof. Merl R. Eppse	Miss Lamaris Patton	Mr. Mingo Scott
Mr. Raleigh Wilson	Dr. Elsie Lewis	Miss Lois McDougald	

TOTAL NUMBER OF MEMBERS IN HISTORY STUDY CLUB

One Hundred and Fifty-Three Persons

A FEW WORTHY SONS AND DAUGHTERS OF THE DIVISION

- | | |
|--|--|
| 1. Ras Oliver Johnson, Ph.D. '42, Columbia University | 3. Cecil Partee, J.D. '47, Northwestern University |
| 2. Raymond Grann Lloyd, Ph.D. '44, New York University | 4. Elsie Wallace, Ph.D. '48, Northwestern University |
| | 5. Henry Hymes, Graduate Assistant, Syracuse |

HOME ECONOMICS CLUB



OFFICERS

LOIS JEAN MORRIS	<i>President</i>
CORA BAGWELL	<i>Vice-President</i>
MELBRA WHITLOW	<i>Secretary</i>
LOISTINE GREENWOOD	<i>Assistant Secretary</i>
ELIZABETH ROSS	<i>Treasurer</i>
LEVERNE WILKINS	<i>Chaplain</i>
MARIE HARRIS	<i>Journalist</i>

COMMITTEES

Program Committee—Augusta Fields, Chairman; Nancy Pearl Hampton, Turner Mae Lewis, Mildred Moore, Ernestine McFerren.

Finance Committee—Annie Cross, Chairman; Juanita

Gordon, Marie Turrentine, Mary E. Williams.

Social Committee—Madeline Allen, Chairman; Claudia Cambell, Lois Bailey, Rebecca Hunt, Bertha Rucker, Betty Valentine.

ADVISERS

Miss Erna B. Jones, Miss Christine Hall, Mrs. Geraldine Fort, Mrs. Ethel Smith.

This club, to which all students and faculty members of the Division of Home Economics are eligible holds bi-monthly meetings. The major purpose of the club is to promote professional interest through social

contacts, lectures and group discussions on current developments in the field of Home Economics. The club sponsors jointly with the Agriculture Club social attractions such as the annual Dawn Dance and Spring Picnic.

INDUSTRIAL EDUCATION AND ENGINEERING CLUB



PURPOSE

Better things for better living through the skilled hand.

MOTTO

The skilled hand builds the world.

The Industrial Education and Engineering Club was founded in September, 1946, mainly for the purpose of better acquainting the students with the men already in the various fields who have become successful business or trades men, by arranging for the students to have conferences with the men and to hear lectures given by them.

OFFICERS

ALFRED F. BONNER, JR.	<i>President</i>
JOHN W. KING	<i>Vice-President</i>
EARL L. SASSER, JR.	<i>Secretary</i>
FRANK HARDEN	<i>Assistant Secretary</i>
WILLIE T. ADAMS	<i>Treasurer</i>

ADVISERS

PRESTON E. STEWART

WILLIAM C. MCNEILL, JR.

INTERFRATERNAL COUNCIL



The Interfraternal Council is the circle into which all sororities and fraternities reach to join hands in sincere fellowship and genuine brotherhood. It is

their biggest and most final task to cement the Greeks on our campus into one unbreakable bond, losing their fraternal or sororal identity in this union.

OFFICERS

WILLIAM LAWSON	<i>President</i>
EDWARD LA'PRADE	<i>Vice-President</i>
JEANNINE ALLISON	<i>Secretary</i>
BETTY COLEY	<i>Corresponding Secretary</i>
NAOMI ADAMS	<i>Treasurer</i>
JOSEPH RUCKER	<i>Chairman of Committee on Programs</i>
WILLIAM SCOTT	<i>Chairman of Social Committee</i>

MEMBERS

Dave Henri Fonney
James Bland
Eurline Couch
Clarence Crutchfield
William Suggs

George Ola Williams
Mattie Haston
Dorothy Collins
Doris Simmons
Thomas Woods

ADVISER

DR. V. S. NYABONGO

LAICOS S. RONOH HONOR SOCIETY



Seated left to right in the picture are: Bettye Coley, Dean to the Pledge Club; Jeannine Allison, President; Thomas McDowell, Vice-President; Miss Nora L. Roy, Adviser; and Helen Dumas, Secretary. Not in the picture is Mr. Jerome Holland, Director of the Division, and Adviser.

Laicos S. Ronoh Honor Society was organized in the Winter Quarter, 1949. It aims to promote high scholarship and to stimulate the development of character and intellectual leadership among majors in the Division of Political and Social Science.

LAMBDA ETA SIGMA HONOR SOCIETY



Standing, left to right: Claudine Koonce, Jimmuir Cotten, Emmitt Reeves, Madelyn Brewer, Herman Hyatt, Robert Everett, Jonathan Taylor, George Ola Williams, Joseph Williams.

Seated, left to right: Lemuel Joyner, Helen Dumas, Elese Evans, Mattie Rutherford, Pearl Gore, Yvonne Kirkpatrick, Jeannine Allison, Arthur Williams, Mrs. P. W. Gore.

Not in picture: William Scott, Alfonzo Butts, Justine Ridley, Charlie Law, Helen Smith, Dave Fonney, Thelma Baker, Gilbert Mason, Catherine Rivers.

LAMBDA ETA SIGMA, National English Honor Society and its quill club pose for a joint picture just before initiation. Requiring a 3.0 cumulative average in English for membership, this organization was founded by Miss Zelma Redmond, at Tennessee State College.

OFFICERS

HELEN DUMAS	<i>President</i>
HELEN SMITH	<i>Secretary</i>
ELESE EVANS	<i>Treasurer</i>
PEARL GORE	<i>Dean of Pledges</i>
MRS. PEARL W. GORE	<i>Adviser</i>
MRS. MARY F. CARTER	<i>Co-Adviser</i>

LOS BUENOS VECINOS

"The Good Neighbors"



Reading from left to right: John Moore, Lillian Pickett, Crawford B. Lindsay, Jr., Carmen Stokes, Theodore Jefferson, Charles Bussell, Marion Upshaw, Booker T. Hopkins, Milton Lewis, Lula Watson, Freeman Wyche, Excetral Caldwell, Sadie Whitlow, John Outland, Frances Edmondson, Herbert Stratton. Center: Mrs. Hazel Wright, Faculty Adviser, Herman W. Hyatt, President.

The Spanish Club, organized in 1913 by Mrs. Alma T. Watkins, head of the Modern Language Department, serves to stimulate interest and contact with Spanish life and culture. Membership is open to all students in Spanish. The year's activities include: the annual Membership Banquet, the Pan-American Week Program, Spanish movies and a Christmas party with the French Club.

OFFICERS

HERMAN W. HYATT	President
MARY NUBIA	1st Vice-President
THOMAS CANNON	2nd Vice-President
CARMEN STOKES	Secretary
LILLIAN PICKETT	Assistant Secretary
JOHN MOORE	Treasurer
MILTON LEWIS	Chaplain
HERBERT STRATTON	Historian
MRS. HAZEL WRIGHT	Adviser

SECOND ANNUAL BANQUET

November 20, 1918

Left to right: Samantha Hayden, William Johnson, Thelma Avant, Ella Fort, Elizabeth Hyatt, Herman Hyatt, President, Mrs. Hazel Wright, Adviser, Mrs. Alma Collins, Guest Speaker, Milton Lewis, Crawford B. Lindsay, Jr., Lillian Pickett, Utley Rhodes, Anderson Petty, Theodore Jefferson.



NEW FARMERS OF AMERICA

COLLEGIATE CHAPTER

The National Organization for Negro Students Studying Vocational Agriculture



Left to right, front row—William S. Suggs, George O. Thompson, Leonard Black, Tony Wade, A. M. Ward, Henry L. Hennings, Marcus T. Floyd, William Corley, Robert Ramsey, Martha Dysart, Robert Barbee, John W. Yarbrough, Joseph Neal, Jessie Poindexter, Allen Y. Searcy, Joe Porter, Julius Tyler, Ernest Wallick, Alonzo Jordon.

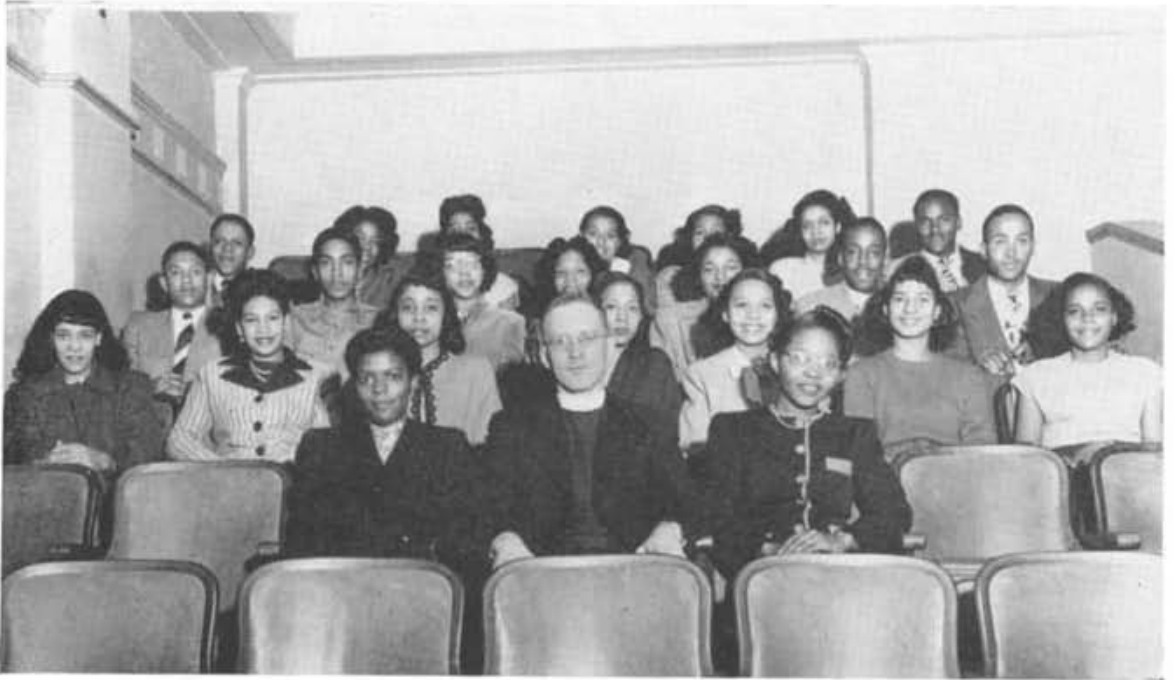
Second row, left to right—Charles Archibald, Dr. M. R. Myles, Dr. M. F. Spaulding, Vaudie Shamblin, Paul Valentine, Wally L. Porter, Archie Henning, Everett Thompson, Samuel C. Lee, Theodore Giles, Joseph Simmons, David McMurray, Toby Pursley, James Johnson, Theodore Stokes, Starling Birdsong, Alfred Jones, McClellan Day, George P. Patterson, Robert McFerrin, Mr. Cornius King, Rudolph Montgomery, John W. Davis, Jake Armstrong, Mr. Fred Westbrook, Joe V. Singleton.

Third row, left to right—Andrew Dunn, Sam Scott, Kirby Teague, Kenneth Golden, James F. Davis, John F. Buchanan, Leon H. Griffin, Tony Webb, Odell Buchannon, Mr. Walter A. Flowers, Martin Crockett, George Birdsong, Sherman Martin, Robert Holman, James Stewart, Everette Rucker, Gene Tyler, Henoah Bettis, Albert T. Nunn, Mr. O. L. Adams, John H. Rooks, Mr. Ernest Mabins, Ashley B. Craig, Fletcher Cantrell, Scott Saunders.

OFFICERS

WALTER A. FLOWERS	<i>Director</i>
HENRY L. TAYLOR	<i>Adviser</i>
WILLIAM A. SUGGS	<i>President</i>
SAMUEL C. LEE	<i>Vice-President</i>
THEODORE GILES	<i>Secretary</i>
NOAH MCFERRIN	<i>Treasurer</i>
JAMES HUDSON	<i>Reporter</i>

THE NEWMAN CLUB



The Newman Club of Tennessee State College was founded in January, 1946. Its purpose is to assist Catholic young men and women in secular educational centers to apply Christian thoughts and principles to the problems of everyday life.

The spiritual needs of the students are cared for by the chaplain. Under his leadership also study clubs and discussion groups are advanced, in which the

truths of the Faith are presented in the light of the needs of the students.

The club has taken its inspiration from the great educator-convert of the last century, Cardinal Newman. There are more than thirty thousand members in about seven hundred eighty Newman Clubs in this country.

OFFICERS

FATHER KEVIN ROE, O.F.M.	<i>Chaplain</i>
DOROTHY MARIE McVEY	<i>President</i>
VELMA LOUISE FOYE	<i>Secretary</i>
CAROLINE BLANTON	<i>Treasurer</i>
MISS JULIA HAWKINS	<i>Adviser</i>

POLITICAL AND SOCIAL SCIENCE CLUB



Bottom row, reading left to right—Mildred Lee, Evelyn Dubose, Helen Dumas, Margretta Morse, Angeline Stone, Pauline Bailey, Juanita Burnett. Second row—Hazel Mayberry, Willie Penn, Katie Knight, Flora Morgan, Valerie Devore, Dorothy Purnham, Velma Griffin, Jeannine Allison. Top row—William M. Scott, John Belliford, Joseph Williams, Curtis Anderson, Lloyd Fletcher, William Lawson, Joseph Gunnell, Earnest Newborn, Anderson Petty, Ernest Sims.

STUDENT CHRISTIAN ASSOCIATION



The Student Christian Association is the haven of Christianity on Tennessee State's campus. It offers an outlet, even in a state institution, for all the finer and higher qualities that make a better man or woman. It runs the gamut from aiding some poor family at Christmas time to attending international and interracial conferences.

OFFICERS

EVELYN WATTS	<i>Co-Chairman</i>
WILLIAM LAWSON	<i>Co-Chairman</i>
DOLORES JOHNSON	<i>Co-Secretary</i>
WILLIAM V. HARPER III	<i>Co-Secretary</i>
WILLIAM BANKS	<i>Treasurer</i>
JEANNINE ALLISON	<i>Chairman of Program</i>
MRS. ANNIE SUE EVANS	<i>Workshop Leader</i>
MISS BENNIE M. SULLIVAN	<i>Workshop Leader</i>
MRS. CECILLE V. CRUMP	<i>Workshop Leader</i>
MISS RUTH A. MCDOWELL	<i>Workshop Leader</i>
MR. LOUIS J. WILLIE	<i>Counselor</i>

SUNDAY SCHOOL



OFFICERS

WILLIAM M. SCOTT	<i>Superintendent</i>
GILBERT R. MASON	<i>First Assistant Superintendent</i>
WILLIAM A. LAWSON	<i>Second Assistant Superintendent</i>
JEANNINE ALLEON	<i>Secretary</i>
THELMA L. BAKER	<i>First Assistant Secretary</i>
DOROTHY L. ALEXANDER	<i>Second Assistant Secretary</i>

ADVISER

MR. R. E. CLAY

STUDENT COUNCIL



Standing, left to right: Robert H. Roane, Senior Representative; Jean Woodson, Freshman Representative; William A. Lawson, Junior Representative; Flora M. Ingram, Senior Representative; Hermon W. Hyatt, Senior Representative; Dean W. K. Fox, Faculty Adviser; Thomas E. Wood, Senior Representative.

Seated, left to right: Dr. Virginia S. Nyabongo, Faculty Adviser; Thelma L. Baker, Senior Representative; William M. Scott, Senior Representative; Martha Hursey, Adviser on Publications Board; Mrs. Alma D. Jones, Adviser on Publications Board.

Not included in photograph: Omar Robinson, Junior Representative; Evelyn Suggs, Junior Representative; Jim-muir Cotten, Sophomore Representative; Marie Harris, Sophomore Representative; Lewis Wilson, Graduate Representative.

OFFICERS

WILLIAM M. SCOTT	<i>President</i>
HERMON W. HYATT	<i>Vice-President</i>
THELMA L. BAKER	<i>Secretary</i>
EVELYN A. SUGGS	<i>Assistant Secretary</i>
WILLIAM A. LAWSON	<i>Public Relations Director</i>

ADVISERS

DR. VIRGINIA S. NYABONGO

DEAN WILLIAM K. FOX

TRANSCRIPTION CLUB



First row, from front to back (left), under the supervision of Mrs. C. V. Crump (standing), students taking dictation: Margapet Andrews, Vivian Whitson, Ruth Giles, Mary Shaw. Second row, Flora Ingram, Velma Foye, Evelyn Davis, Esther B. Harris. Third and fourth rows, students transcribing from shorthand notes, under the supervision of Mrs. M. Clay Pinkston (standing). Third row, Thelma Baker, Selma Taylor, Amanda Crosby, Ruth Jones. Fourth row, Lorene Hickerson, Arvella Smith, Mary L. Dunn, Laura Jones. In the rear of the room, students transcribing from ediphones, shaving cylinders and dictating via ediphone, reading from left to right: Dave Henri Fonney, Geneva McKinley, Yvonne Kirkpatrick, Johnetta Powell, Evelyn Watts, Elaine Hicks, and Barbara Teeter.

In order to promote a functional educational program and to keep abreast with progressive business institutions, members of the dictation and transcription classes, with Mrs. M. Clay Pinkston as adviser, organized the Transcription Club. Membership is open to students with a B average in Advanced Shorthand.

The Transcription Club supplements class activities giving the students a broader interpretation of the

field of business education and its general relation to society. Members are organized in small units for Public Stenographer work; to take notes at the various programs, and to render general transcription service to the College. Members participate in the National O.G.A. Shorthand Writing Contests sponsored yearly by the Gregg Publishing Company.

OFFICERS

THELMA BAKER	President
LORENE HICKERSON	Vice-President
FLORA INGRAM	Secretary
YVONNE KIRKPATRICK	Assistant Secretary
MARGARET ANDREWS	Treasurer
BARBARA TEETER	Reporter
MRS. M. CLAY PINKSTON	Adviser
MRS. C. V. CRUMP	Assistant Adviser

MISS TENNESSEE STATE COLLEGE



1. Miss Ella Edith Holmes, ready for travel

2. With Miss North Carolina State College

3. In a Parlor Mood

4. With Attendants during Homecoming

5. Following coronation, surrounded by gifts

HOMECOMING



THANKSGIVING BANQUET

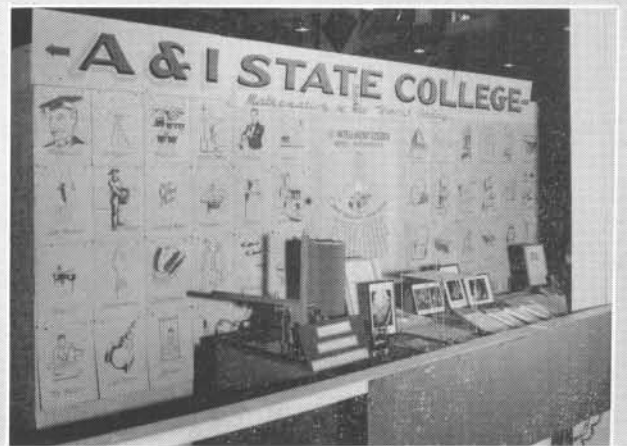


Top—Dean G. W. Gore presents President Davis with a Hamilton wrist watch . . . Left—Speakers Table . . . Right—Memphis Group . . . Bottom—Mrs. Martha Brown in whose honor the new Library addition will be named.

OLYMPIC STARS



CAFETERIA AND EXHIBITS



TOP

Left—Cafeteria Serving Counter

Right—Tri-State Fair Exhibit

CENTER

Left—Dietician and Chefs Prepare Meat

Right—Engineering Division Display, Tri-State Fair

BOTTOM

Left—Salad Preparation

Right—Mathematics Exhibit, Tri-State Fair

CAMPUS PERSONALITIES



SUMMER COMMENCEMENT

*President Stuntz of Scarritt College delivers Com-
mencement Address.*



Honor Students, Summer 1948.



Candidates for the Master's Degree, 1948.





JOE LOUIS VISITS CAMPUS

William (Tiny) Cox, squares off against Joe Louis during his visit in November.



Tiny Cox, Charles German, Joe Louis, Coach Harris, Clarence Moutry.



T-Champions Nay Taylor, Football; William Cox, Boxing; Audry Patterson, Trach; Joe Louis; Frank Stewart, Swimming; Clarence Wilson, Basketball.



ALPHA BETA CHAPTER
GAMMA THETA UPSILON



Seated, left to right: Alfonzo B. Butts, Secretary; Benjamin C. Saunders, Vice-President; Jimmuir Cotton, President; Herman W. Hyatt, Treasurer. *Standing, left to right:* Merl R. Eppse, Paul Thompson, Joseph Lujan, F. J. D. McKinney, Charles Simmons, Princess M. Bowen, Elze Eugene Bogan, William H. Brown. *Members not shown:* Mazie O. Tyson, James K. Anthony.

OFFICERS

JIMMUIR COTTON	President
BENJAMIN C. SAUNDERS	Vice-President
ALFONZO B. BUTTS	Secretary
HERMAN W. HYATT	Treasurer
JAMES K. ANTHONY	Adviser

MEMBERS

Elze Eugene Bogan
 Princess M. Bowen
 William H. Brown

Merl R. Eppse
 Joseph Lujan
 F. J. D. McKinney

Charles Simmons
 Paul Thompson
 Mazie O. Tyson

Desirous of establishing a closer bond of fellowship among undergraduate students of geography and especially of promoting geography in education, the members of the geography club of the Illinois State Normal University at Normal, Illinois, organized on May 15, 1928, a local professional fraternity under the name of Gamma Theta Upsilon.

After three years of successful functioning, letters were sent to other geography clubs suggesting that a national fraternity be organized. The National Or-

ganization was announced on May 15, 1931. On March 5, 1936, Gamma Theta Upsilon was incorporated under the laws of the State of Illinois as a professional fraternity in geography. Due to the untiring work of Mr. James K. Anthony, Tennessee A. and I. State College became the first Negro college or university and the second in the south, to be granted a chapter.

On January 25, 1949, fourteen charter members were initiated into Alpha Beta Chapter on the campus of Tennessee A. and I. State College.

Campus Children





