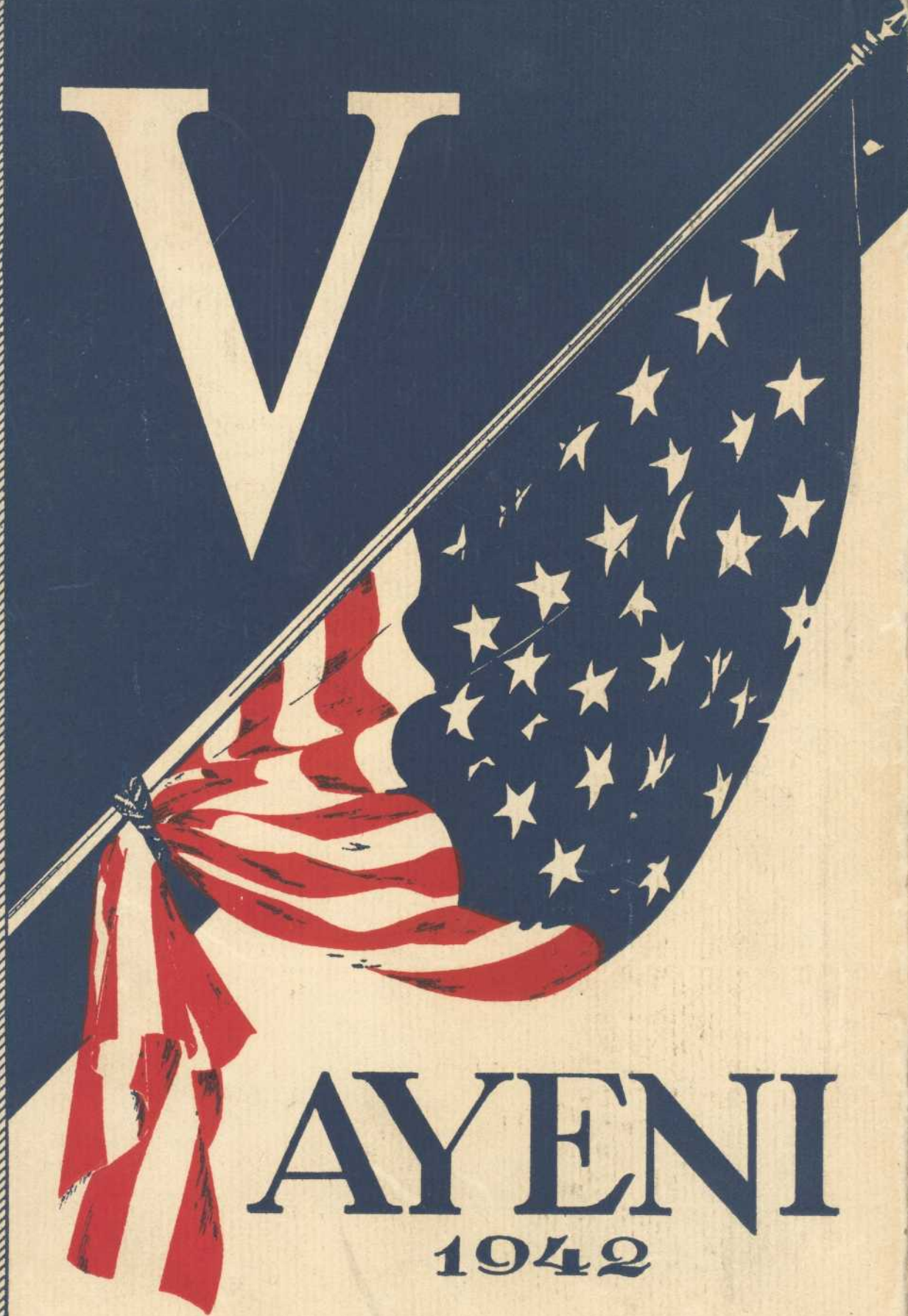


V



AYENI  
1942

# AYENI

1942



## Contents

DEDICATION

CAMPUS VIEWS

PRESIDENT W. J. HALE

ORIGINAL FACULTY

ADMINISTRATIVE OFFICERS AND FACULTY

AYENI STAFF

SENIORS

JUNIORS

SOPHOMORES

FRESHMEN

GREEK LETTER ORGANIZATIONS

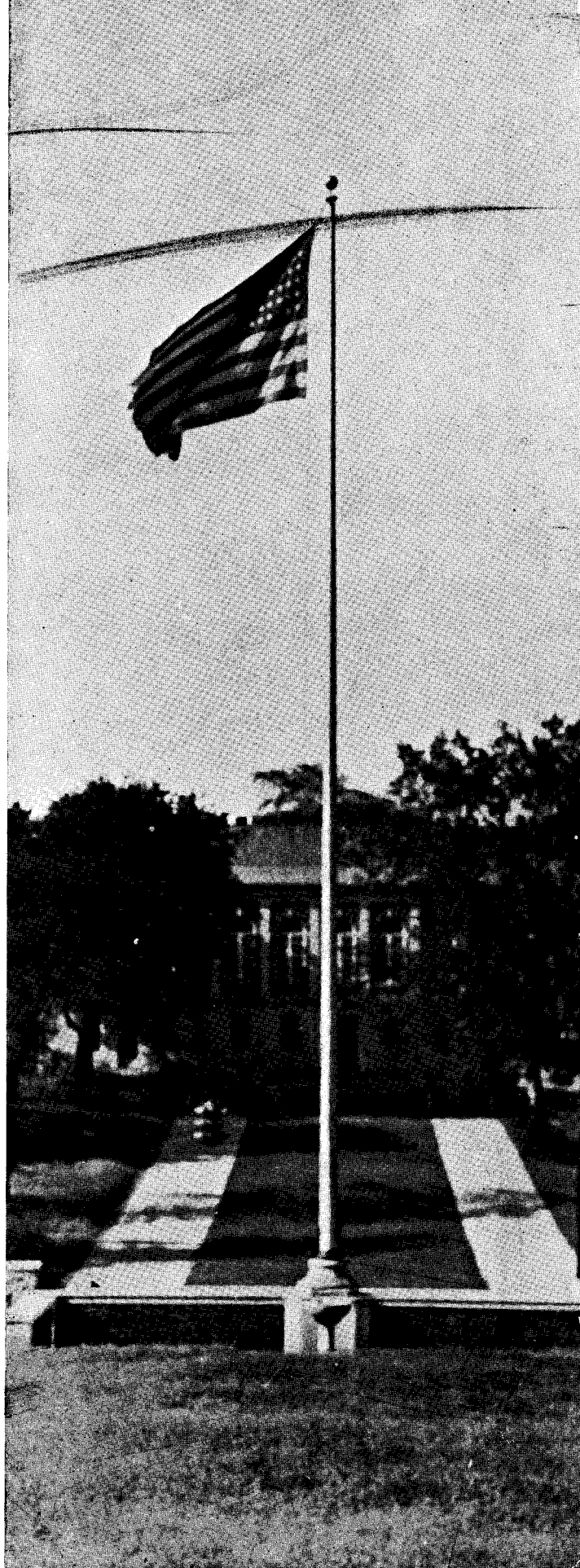
CAMPUS CLUBS

ACTIVITIES AND DEPARTMENTS

PERSONALITIES

SNAPSHOTS

THE HEMPHILL PRESS  
NASHVILLE, TENNESSEE







WILLIAM JASPER HALE

President, Agricultural and Industrial State College since 1911. M.A., Lincoln University; LL.D., Wilberforce University; LL.D., Howard University.

## THE PRESIDENT

Born, Jasper, Tennessee; Educated in Maryville College, Maryville, Tennessee; Principal, St. Elmo High School; Principal, East Fifth Street School, Chattanooga, Tennessee; Founder and President, Tennessee Inter-Racial League; Past President, National Conference of Presidents of Land Grant Colleges; Former Vice-President, National Negro Business League; Honorary President, Tennessee Negro Education Association; Member of President Hoover's Housing Committee; Vice-President of Citizen's Savings Bank and Trust Company; Lecturer, National Education Association and Teachers College, Columbia University; Harmon Gold medalist, 1930; Member of N.E.A. Committee on Negro Education; Member of International Advisory Committee on Education; Member of National Advisory Committee of Delta Phi Delta; Jewel of Alpha Kappa Mu Honorary Fraternity; Charter member of Chi Boule of Sigma Chi Phi Fraternity; 1942 Recipient of gold key from Tennessee Chapter of New Farmers of America; Jewel of Lambda Eta Sigma Honor Society; Director, Negro Division, United States War Saving Bonds and Stamps Campaign in Tennessee.

# W. J. Hale--A Victorious Leader

The career of President William J. Hale, as one of the outstanding educators of the nation, had its beginning in his decision to enter Maryville College, Maryville, Tennessee. His sterling leadership ability began to evince itself even at that early date, and the outstanding quality of work done while he was there was responsible for his being offered a position as teacher in his native town, Retro, Tennessee. From this modest beginning as a country school teacher, he next took a forward step by accepting the principalship of St. Elmo High School, located in a suburb of Chattanooga. Later he became principal of the East Fifth Street Grammar School in Chattanooga.

He was now definitely on the upward trend, but this field was too small for such a great character. Therefore, when in 1912 the members of the State Board of Education looked about them to seek a suitable president for the State College in Nashville, they designated him as their choice for this position. Leaving the outgrown shell of his former career behind him, he turned his face toward Nashville and thus began his long and colorful career as president of A. and I. State College. Upon assuming his responsibilities as president he met with many obstacles which would have discouraged the average man, but President Hale met each one with fortitude and courage. The ability of a strong character to withstand the winds of adversity was vividly demonstrated during the period of 1912 to 1920 when the institution was engaged in a struggle for its existence against overwhelming political odds. President Hale was faced with the necessity of defying not only a state governor, but also of denouncing representatives of the federal government in order that the institution might maintain its integrity and continue to function as a state endowed school for Negro youth. This he accomplished with such a degree of success that instead of becoming non-existent the school flourished until 1920, when the institution launched on a transition program by which it became a four-year teacher's college. Since that time liberal grants from the General Education Board of New York City and the Rosenwald Fund of Chicago have made it possible for the College to grow with phenomenal rapidity.

The Tennessee General Assembly has also been instrumental in the growth of the college through its appropriations for the institution. Today the institution with its million dollar plant, its efficient faculty, its enrollment of over a thousand students, representing over 37 states, its future program for developing A. and I. State College to the status of accredited undergraduate and post-graduate work for Negroes on the same standards as the University of Tennessee, stands as a living monument of what this peerless educator has done for his race.

Not only have the achievements of President Hale been recognized by the educational world, but they have also been recognized by the fraternal world as evinced by the fact that he is jewel of Lambda Eta Sigma, Alpha Mu Fraternity, charter member of Chi Boule of Sigma Chi Phi Fraternity and member of the National Advisory Committee of Delta Phi Delta. Further, he was awarded the LL.D. degree by Wilberforce University in 1936, and the LL. D. degree from Howard University in 1939.

One of the great honors of his educational career came to him on February 18, 1930, when he was awarded the Harmon Foundation Gold Award.

However, the crowning distinction of President Hale's life as an educator, as well as a citizen of his country, was bestowed upon him, when, in recognition of his contributions to his city, his state, and his country through the symbolizing of the school motto: Think, Work, Serve, he was appointed Chairman of the Negro Division of the War Saving Bonds and Stamps Drive for Tennessee. Through his efficient and patriotic leadership he has organized Tennessee State College and the community as a National Defense Unit, thus proving conclusively that under his guidance the Negroes of Tennessee will show to the world that they, too, are all out for Victory.

Thus the educational road that he travelled from Maryville College, as a student, to Tennessee A. and I. State College, as president, has been paved with one honor after the other, one achievement after the other, and one contribution after the other for his Race, his State and his Nation. What are his philosophies of life that have guided him in the panorama of achievements? Plato said: "Souls of men are fashioned by the things they see, feel and hear." May we say that the philosophies of President W. J. Hale began in Retro, for he chose the simple farm life as the theater of his thinking. As he grew older, philosophies were added, subtracted and modified as his experiences on the road of life grew numerous and complex. Let us pause to reflect over these philosophies by which we identify this great leader.

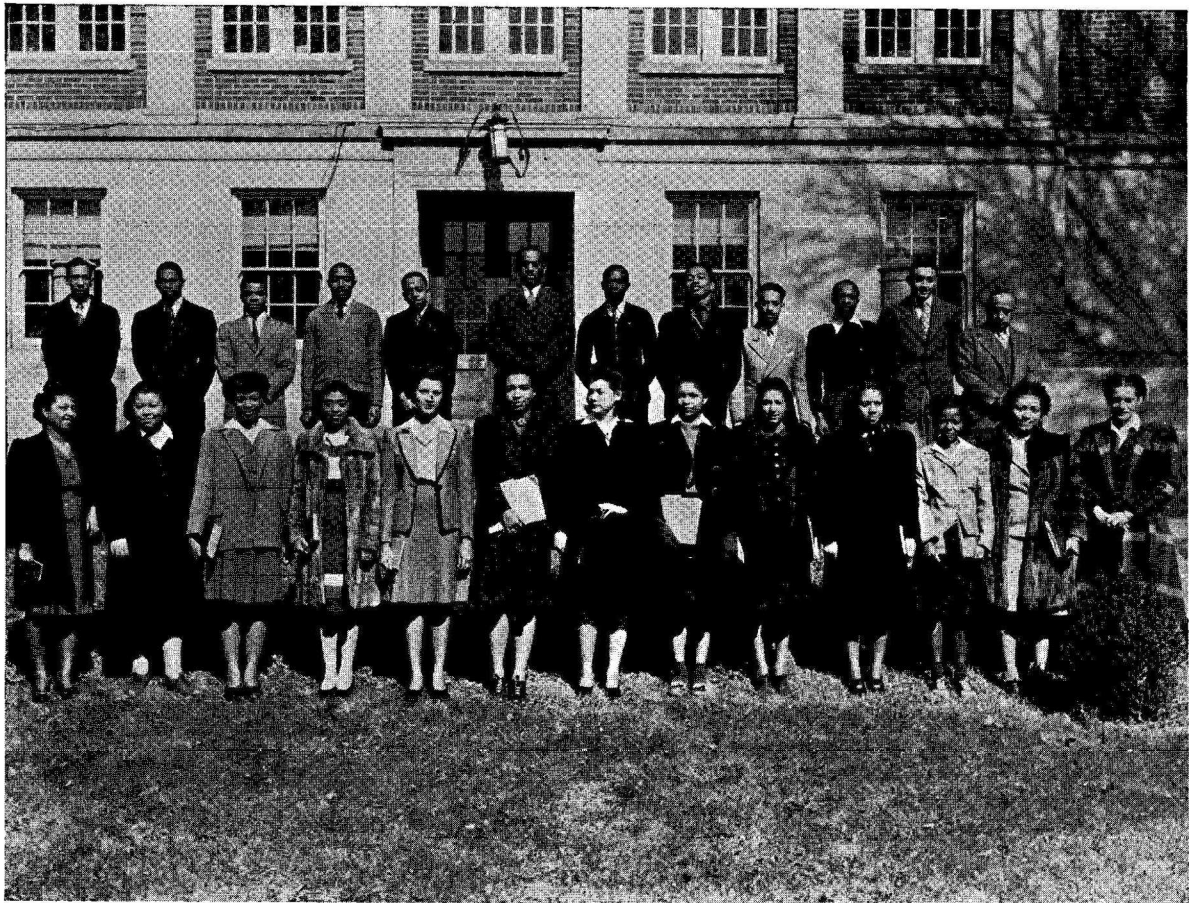
Amidst a war of free men against totalitarian shackles—a war for the survival of civilization—against paganism—a war of right against the forces that recognize no master and no incentive but greed and might—a war for the triumph of freedom's banner, as never before in the history of civilization, the eyes of the world are focused on leaders for guidance and direction so that America! the great! America the beautiful! may continue to enjoy life, liberty and pursuit of happiness—America focus your eyes on William Jasper Hale, a Victorious Leader.



# 1942 Ayeni Staff



# Ayeni Staff



## EDITORIAL STAFF

MARY F. SUGGS  
*Editor-in-Chief*

CECIL PARTEE  
*Assistant Editor-in-Chief*

CHARLES R. HUNTER  
*Art Editor*

EDWARD HALE  
*Photographic Editor*

WILLIE L. JOYNER  
*Club Editor*

JOHN W. SHEPPARD  
*Fraternity Editor*

DOROTHY A. THOMAS  
*Sorority Editor*

MARY GRIFFIN  
*Copy Editor*

OTIS DOUGHTY  
*Assistant Art Editor*

HELEN A. PIERSAWL  
*Assistant Photographic Editor*

CHARLETA HICKS  
TULIPE CLAIBORNE  
*Senior Class Editors*

## BUSINESS STAFF

HALBERT E. DOCKINS  
*Business Manager*

LEONARD D. THOMPSON  
*Assistant Business Manager*

R. B. J. CAMPBELL, JR.  
*Chairman of Snap-shot Committee*  
*General Secretary*

MYRTLE R. BANKS  
*Assistant Secretary*

JOSEPH RUCKER  
INDIANOLA HAYES  
MARGUERITE ROAN  
MARGARET INSTON  
LAWRENCE McVOY  
JESSICA OFFICER  
FRANK BALLARD  
EARL BASS, JR.  
THEO HOWARD  
JESSE MILLER  
ROBERT BAILEY  
*General Assistants*

## ADVISERS

DR. GEORGE W. GORE, JR.  
MRS. ALMA DUNN-JONES  
MISS LOIS DANIEL  
MR. JOHN W. PARKER





VIEW FROM LAKES



FIELD HOUSE



EAST DORMITORY



FOUNTAIN AT NIGHT



LIBRARY AT NIGHT



LIBRARY  
SENIOR WALKS



WILSON HALL



LIBRARY



ADMINISTRATION BLDG. AT NIGHT



CHRISTMAS AT PRESIDENT'S HOUSE



HALL

THE LAKE



[illegible]



# Chronology of Tennessee Agricultural and Industrial College

- 1909—Institution authorized by General Assembly of Tennessee.
- 1911—W. J. Hale of Chattanooga chosen as principal.
- 1912—June 19, institution first opened its doors and admitted 247 students.
- 1913—First biennial visit of Governor and Members of Tennessee General Assembly.
- 1915—More than one thousand students enroll in summer session.
- 1916—Beginning of student organizations.
- 1917—Alumni and former students volunteer for services with U. S. Armed Forces.
- 1919—Founding of Sais Honor Society.
- 1920—Entrance of first college freshman class.
- 1922—Beginning of senior college division.
- 1923—Tennessee State Association of Teachers in Colored Schools organized.
- 1924—Granting of bachelor's degrees to seven men and one woman.
- 1925—General Education Board gives \$100,000 to \$330,000 building program.
- 1927—Institution serves as host to National Association of Teachers in Colored Schools.
- 1928—Institution complimented in Survey of Negro Colleges and Universities, issued by U. S. Bureau of Education.
- 1929—Institution recognized as class one by American Medical Association.
- 1930—Harmon Gold Award in Education goes to Pres. W. J. Hale for achievement at A. and I. State College.
- 1931—Ayeni, the College Yearbook, wins All-American rating in National Scholastic Press Association Control.
- 1932—Branch School conducted in Chattanooga during Summer Quarter.
- 1933—Institution granted membership in and accredited by American Association of Teachers Colleges.
- 1934—Tennessee "Tigers" national football co-champions.
- 1935—Dedication of six new college buildings.
- 1937—Silver Anniversary Celebration.
- 1938—Pres. Hale speaks on "Interracial Cooperation" over "Wings Over Jordan" program over the Columbia Broadcasting System.
- 1939—Concert Singers appear on Tennessee Day at New York World's Fair.
- 1941—NYA Resident Project established.
- 1942—President Hale led college in 100 per cent campaigns for American Red Cross, the March of Dimes and U. S. Defense Savings Stamps and Bonds.

# Administrative Staff and Faculty

## They Have Served Thirty Years



WILLIAM JASPER HALE  
*President*  
M.A., Lincoln University  
LL.D., Wilberforce  
LL.D., Howard University



HARRIET E. HALE  
*Business Education*  
A.B., Fisk University  
B.S., Tennessee State College  
M.A. and further study,  
Columbia University



MARTHA M. BROWN  
*Librarian*  
Fisk University  
Hampton Library School



J. H. HALE, M.D.  
*School Physician*  
A.B., Walden University  
M.D., Meharry Medical College



# Administrative Staff



GEORGE WILLIAM GORE, JR.  
Dean of Instruction  
A.B., De Pauw University  
University of Chicago  
Ed.M., Harvard University  
Ph.D., Columbia University



EDNA ROSE HANKAL  
Dean of Women  
A.B., Fisk University  
Further Study, Columbia University



JANIE E. ELLIOTT  
Director of Cafeteria  
Knoxville College



ALGER V. BOSWELL  
Treasurer and Mathematics  
A.B., Wiley College  
M.A., Northwestern University  
Graduate Work, Columbia University

# Faculty



LAURA M. AVERITTE  
*English*  
B.S., Tennessee State College  
University of Chicago  
M.A. and further study, Columbia  
University



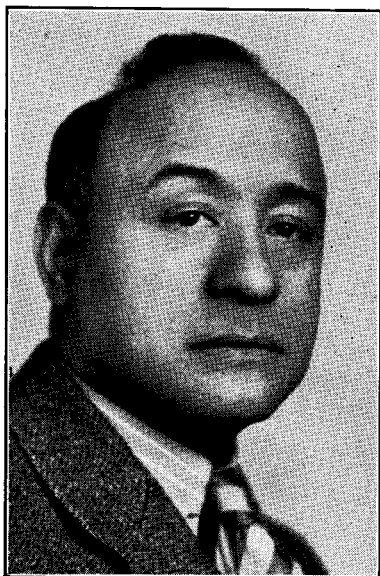
JOHN C. BALLARD  
*Social Science*  
A.B., Shaw University  
M.A., Columbia University  
Further study, University of Chicago



LOIS H. DANIEL  
*Library Science*  
B.S., Tennessee State College  
B.S., in Library Science  
Hampton Library School



WALTER S. DAVIS  
*Agriculture*  
B.S., Tennessee State College  
M.S., Ph.D., Cornell University



MERLE R. EPPSE  
*Social Science and History*  
A.B., Drake University  
M.A., and further study, Columbia  
University



MARY ETHEL EVANS  
*Elementary Education*  
B.S., M.A., Ohio State University

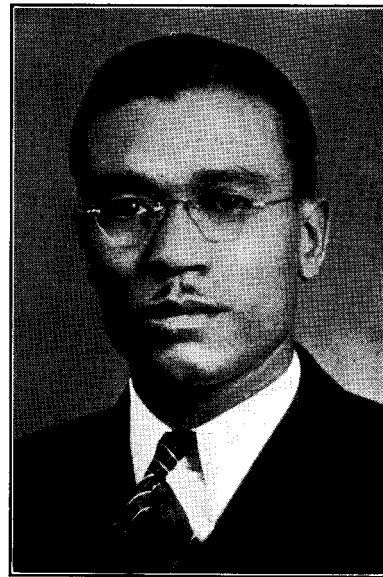
# Faculty



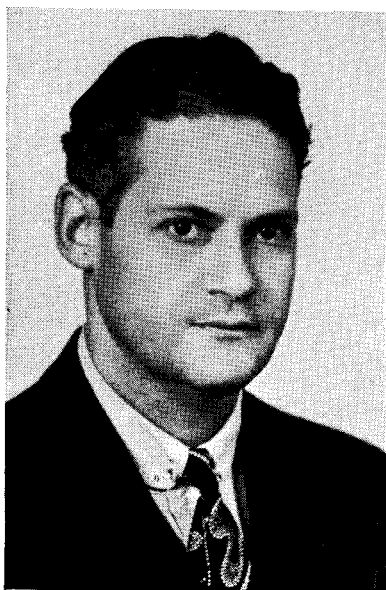
THEODORE GOULD  
*Science*  
B.S., University of Pennsylvania  
M.A. and Further Graduate Work,  
Boston University



RUTH P. GRIGGS  
*Home Economics*  
B.S., Winston-Salem Teachers College  
M.A., Teachers College, Columbia



JESSE D. HAYES  
*Chemistry*  
B.Ed., Southern Illinois State  
M.S., University of Iowa  
Further Study, University of Chicago



THOMAS HAYWOOD HUGHES  
*Biology and Health*  
A.B., West Virginia State College  
M.A., Cornell University



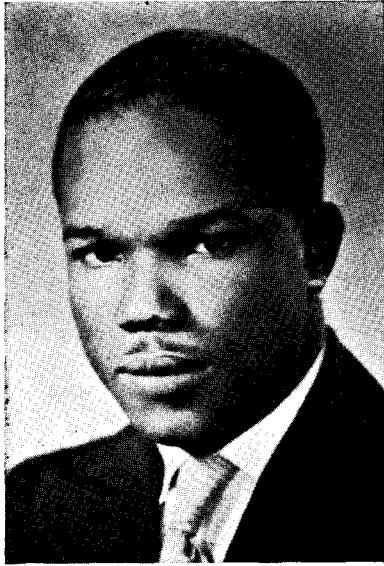
JOSEF C. JAMES  
*History and Government*  
A.B., Talladega College  
M. A., Boston University  
Graduate Work, Harvard University



A. DUNN-JONES  
*English*  
B.S., Tennessee State College  
M.A. and Further Study, Columbia  
University



# Faculty



THOMAS G. LASTER  
*Biology and Psychology*  
A.B., Talladega College  
M.A., University of Minnesota  
Graduate Study, University of Minnesota



FREDERICK J. D. McKINNEY  
*Social Science*  
Earlham College; B.S., M.A., Ball  
State Teachers College  
Further Study, Indiana University



CATHERINE McKINNEY  
*Home Economics*  
B.S., Tennessee State College  
Graduate Study, Ohio State University



EUNICE S. MATTHEW  
*Elementary Education*  
A.B., Hunter College  
Graduate Study, Hunter College  
New York University  
Columbia University

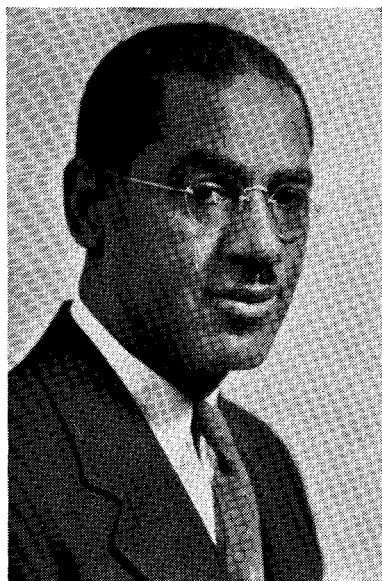


FLOYD C. MOURNING  
*Health*  
A.B., Lincoln University (Pennsylvania)  
M.A., New York University



MARY LELA PARHAM  
*Secretarial Commerce*  
B.S., Tennessee State College

# Faculty



JOHN W. PARKER  
*English*  
A.B., Shaw University  
M.A., Columbia University  
Further Study, Ohio State University



THOMAS E. POAG  
*Speech*  
A.B., Morgan College  
M.A., Ohio State University  
Graduate Study, Ohio State and  
New York Universities



ZELMA REDMOND  
*English*  
A.B., Howard University  
M.A., Columbia University  
Further Study, University of Chicago



FRANCES A. SANDERS  
*Elementary Education*  
B.S., Union Central College  
M.A., Columbia University



HORTENSE WHITE SHEELER  
A.B., Fisk University  
B.S., Tennessee State College  
M.A., Science and Business Education

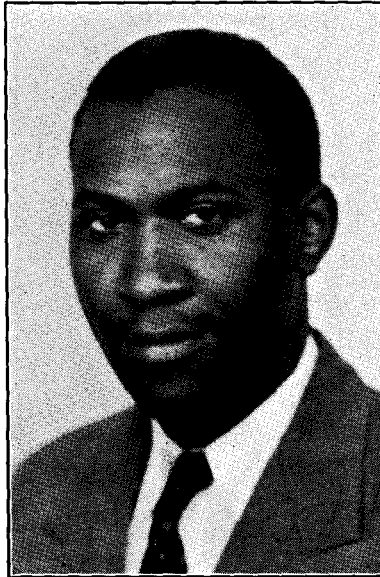


CORINNE E. SPRINGER  
*Home Economics*  
B.S., Tennessee State College  
M.A. and Further Graduate Study,  
University of Cincinnati

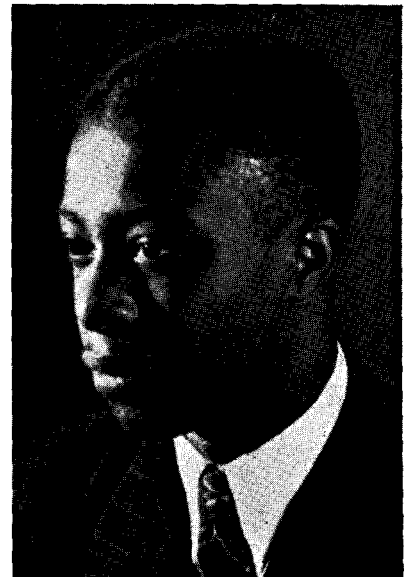
# Faculty



FRANCES E. THOMPSON  
Art  
B.S.A., Massachusetts School of Art  
Prague, Czechoslovakia  
Snow Froehlich School of Art  
Harvard University



WADE WILSON  
Industrial Education  
B.S., Cheney State Teachers College  
Ed.M., Pennsylvania State College  
Graduate Work, University of Minnesota



BENTON A. ADAMS  
Art  
B.S., Tennessee State College



ARNOLD DANIELS  
Industrial Education  
B.S., Tennessee State College



MILDRED E. CLIFT  
Secretary to President  
B.S., Tennessee State College



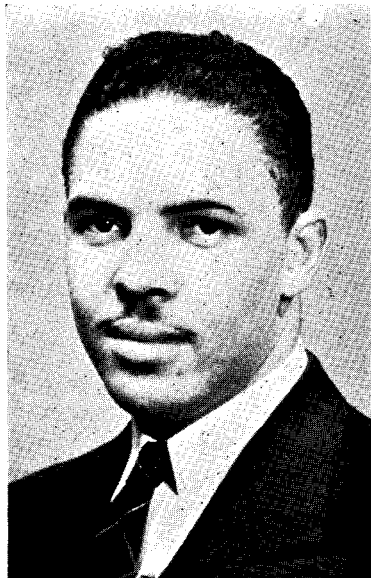
MARY E. FORBES  
Registrar's Office  
B.S., Tennessee State College  
M.A., Fisk University



# Faculty



PEARL W. GORE  
*Students Accounts*  
B.S., Tennessee State College



NEAL McALPIN  
*Laboratory Assistant*  
B.S., Tennessee State College



RUTH McALPIN  
*Secretary*  
B.S., Tennessee State College



GENEVA A. MORROW  
*Home Economics and Cafeteria*  
B.S., Tennessee State College



HARRIETT D. PLEASANT  
*Secretary to Dean*  
B.S., Tennessee State College



MABEL E. SAUNDERS  
*Music*  
Walden University  
Chicago Music College  
Cleveland Institute of Music  
Private Study, Paris, France  
B.S., Tennessee State College

# Faculty



LOUIS C. TOLLIVER  
Office and Grounds  
B.S., Tennessee State College



LENA B. WATSON  
Matron, East Dormitory



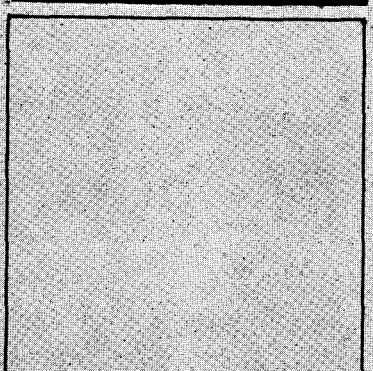
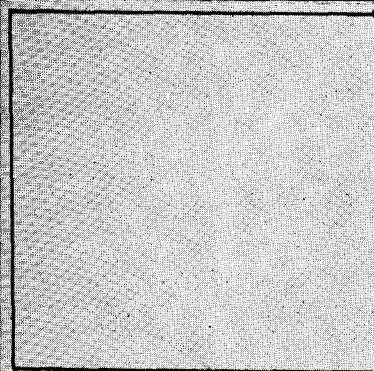
CORA WESTBROOK  
Cafeteria  
A.B., Fisk University



MARY L. CLARK  
School Nurse  
Battle Creek Sanitarium

N Y A

Faculty



MARGARET CAMPBELL, B.S.  
*Language and Home Making Arts*

CARRIE M. DANNY, B.S.  
*Supervisor*  
R. E. CLAY  
*State Director*

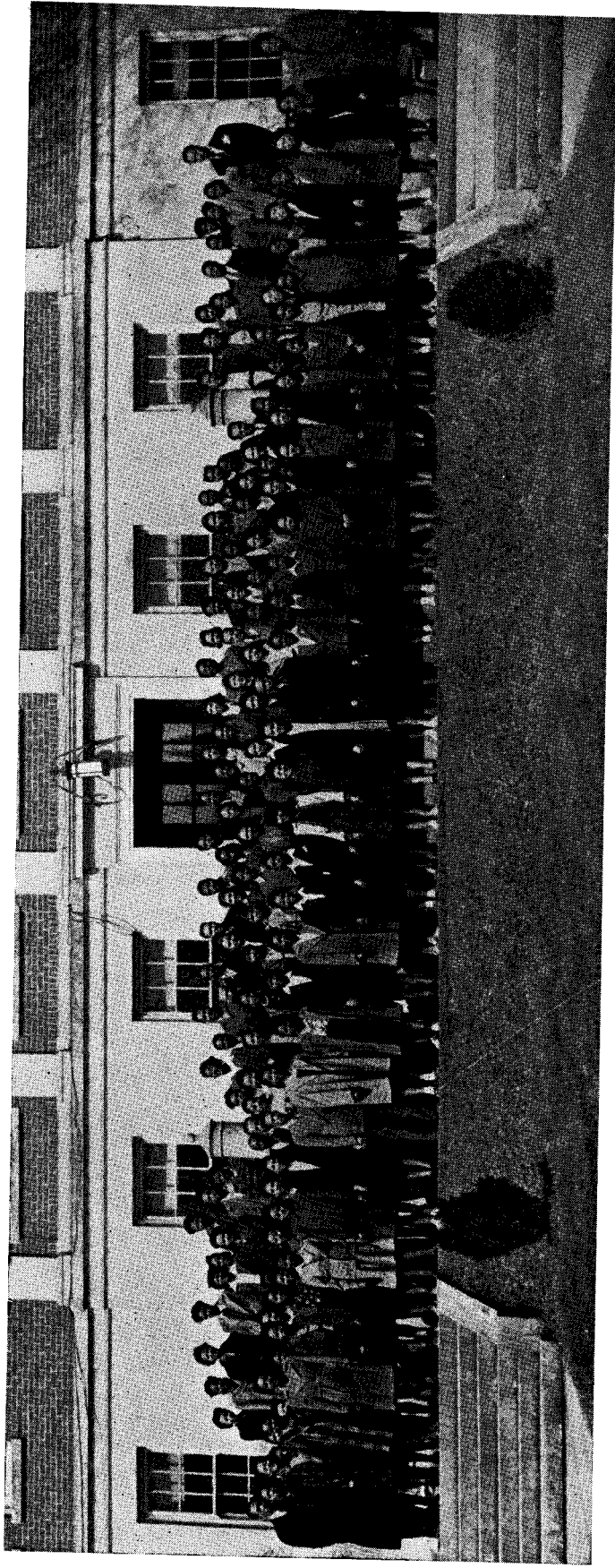
GWENDOLYN HALE, B.S., M.A.  
*Health and Physical Education*

FORREST STRANGE, B.S.  
*Industrial Arts*

WILLIAM J. HALE, JR., B.S., M.A.  
*State Director*  
*Nineteen*

CHARLES HUNTER, B.S.  
*Art and Mechanical Drawing*





# Senior Class

## CLASS OFFICERS

Kennard C. Jones, President; Nashville, Tennessee.  
Luther Webb, Vice-President; Meridian Mississippi.  
Grace E. Howard, Secretary; Nashville, Tennessee.  
Mary F. Suggs, Assistant Secretary; Springfield, Ohio.  
Ardell O. Davis, Treasurer; Canton, Mississippi.  
Leonard D. Thompson, Business Manager; Indianapolis, Indiana.

Whitehaven, Tennessee

*Business Education*

History Study Club, Alpha Kappa Mu, President of Delta Sigma Theta, Lambda Eta Sigma, Business Education Fraternity, President of Senior Sunday School Class, Corresponding Secretary of S.C.A., T. Club, College Choir.

MATTIE ARDALIA BABB

LaFollette, Tennessee

*History and Social Science*

History Study Club, International Relations Club, S.C.A., Alba Rosa Club, Tennessee State Players Guild.

MYRTLE LOUISE BANKS

Forrest City, Arkansas

*Home Economics*

Basileus of Alpha Kappa Alpha, Assistant Secretary of Ayeji Staff, Players Guild, President of Forensic Society, Vice President of Home Economics Club, Secretary of Sunday School, Alba Rosa Club, Alpha Kappa Mu, S.C.A., Jewel of Lambda Eta Sigma.

WILLIE MAE BASS

Nashville, Tennessee

*English*

Lambda Eta Sigma

BEATRICE L. R. BATTS

Nashville, Tennessee

*English*

History Study Club, Education Workshop.

LEO ANDREW BRANTON, JR.

Pine Bluff, Arkansas

*English*

Tennessee State Players Guild, History Study Club, S.C.A., Forensic Society, Better Dormitory Club, Alpha Kappa Mu.



LILLIAN BUREM ARMSTRONG

Rogersville, Tennessee

*History and Social Science*

History Study Club, Alba Rosa Club, President of Quill Club of Lambda Eta Sigma.



ROBERT LAWSON BAILEY

Trenton, Tennessee

*Vocational Agriculture*

President of Phi Beta Sigma, Secretary of N.F.A., Assistant Treasurer of Sunday School, Chemical Society, Laboratory Assistant in Agriculture.



EARL ELMER BASS, JR.

Watertown, Tennessee

*English*

Lambda Eta Sigma, President; Delta Phi Delta.



DAVE ELLA BATTLE

Nashville, Tennessee

*English*

Worship Committee of S.C.A., Tennessee State Players Guild.



CORNELIA BOND

Nashville, Tennessee

*Home Economics*

Home Economics Club



AMBRIZELLA KATIE BREWER

Hopkinsville, Kentucky

*Health and Physical Education*

Physical Education Club, History Study Club.

ELIZABETH BROOKS  
Nashville, Tennessee  
*Home Economics*  
Treasurer of Home Economics Club.

WILLIE A. CALHOUN  
Nashville, Tennessee  
*Home Economics*  
Home Economics Club, History Study Club.

ALBERTA JEANNE CAMPBELL  
Nashville, Tennessee  
*Mathematics*  
President Mathematics Club, Science Club.

CHRISTINE VEGALEE CHURCH  
Franklin, Tennessee  
*Business Education*  
Business Education Club.

ANNIE BELL CLAYTON  
Murfreesboro, Tennessee  
*Business Education*

NELLIE ISABELLE COPELAND  
Nashville, Tennessee  
*Elementary Education*  
Elementary Education Club, History Study Club.

WILLIAM DAVID BURDINE  
Bristol, Tennessee  
*Industrial Education*  
T. Club, History Study Club.

BERTHA MARIE CALVERT  
East St. Louis, Illinois  
*Elementary Education*  
Elementary Education Club, Illinois Big Ten Club, S.C.A.

WILLIE GERTRUDE CHESSE  
Greenville, Mississippi  
*Elementary Education*  
Elementary Education Club, Lambda Eta Sigma, History Study Club.

TULIPE ELIZABETH CLAIBORNE  
Johnson City, Tennessee  
*Elementary Education*  
Secretary of Elementary Education Club, Assistant Secretary of Delta Tau Iota, History Study Club.

KATHERYN COLEMAN  
Memphis, Tennessee  
*Home Economics*  
Alpha Kappa Alpha Sorority, Home Economics Club, Delta Tau Iota Club, History Study Club, Miss Tennessee State '41.

WILLIAM DURY COX, JR.  
Nashville, Tennessee  
*Physical Education and Health*  
Tennessee State Players Guild, Physical Education Club.





DORRIS LEE CROSBY

Nashville, Tennessee

*English*

Delta Sigma Theta Sorority, Delta Tau Iota Club, Lambda Eta Sigma, History Study Club, Tennessee State Players Guild.

MYRTLE SUTTON DANNER

Nashville, Tennessee

*Elementary Education*

Elementary Education Club, History Study Club.

HALBERT EDWIN DOCKINS

Starkville, Mississippi

*Business Education*

Keeper of Records and Seal of Omega Psi Phi Fraternity, Vice President of Better Dormitory Club, Treasurer and Assistant Secretary of Tennessee State Players Guild, Lambda Eta Sigma, Recording Secretary of The Students Christian Association, Alpha Theta Omega Fraternity, History Study Club, Business Manager Aye-ni 1942, Vice President of Delta Phi Delta.

CHEQUETA LOLITA DUNSCOMB

Evansville, Indiana

*English*

Alpha Kappa Alpha Sorority, Lambda Eta Sigma, Delta Tau Iota Club, History Study Club, International Relations Club.

RUTH NAOMI DURHAM

Jacksonville, Florida

*Music and Fine Arts*

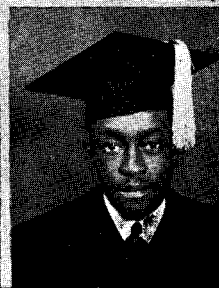
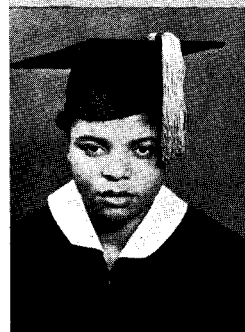
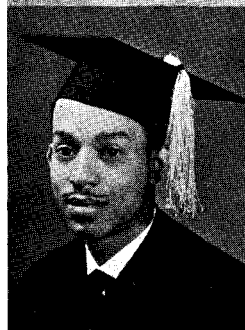
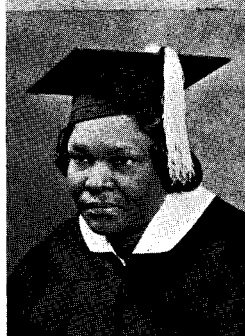
Pyramid Club, Alba Rosa Club, History Study Club, Lambda Eta Sigma.

BERTHA CORAN EPPS

Covington, Tennessee

*Home Economics*

Home Economics Club, History Study Club, Student Christian Association, Tennessee State Players Guild, Delta Tau Iota Club.



MARIE MARCELENE CURLIN

Bumpus Mills, Tennessee

*Elementary Education*

Lambda Eta Sigma, Treasurer; Student Christian Association, Delta Tau Iota Club, Elementary Education Club.

ARIEDELL ODESSA DAVIS

Canton, Mississippi

*Home Economics*

Zeta Phi Beta Sorority, Delta Tau Iota Club, Chaplain of Home Economics Club, History Study Club, Treasurer of Senior Class.

EVELYN ELLIOTT DUMAS

Kimbrough, Alabama

*Elementary Education*

Alpha Kappa Alpha Sorority, Lambda Eta Sigma, Dean of Pledgees, Tennessee State Players Guild, Student Christian Association, Delta Tau Iota Club, History Study Club, Elementary Education Club.

MARIE GERNEDA DUPREE

Jackson, Tennessee

*Elementary Education*

Elementary Education Club, Lambda Eta Sigma.

WILLA CLIFFORD EASTERLY

Knoxville, Tennessee

*Home Economics*

Home Economics Club, Alba Rosa Club, Zeta Phi Beta Sorority.

EARL ALPHONZO FOSTER, JR.

East St. Louis, Illinois

*History and Social Science*

Vice Polemarch of Kappa Alpha Psi Fraternity, History Study Club, Concert Singers, College Choir.

THOMAS WILLIAM GLYPH

Gaffney, South Carolina

*Physical Education*

Physical Education Club, Tennessee  
State Players Guild, Student Christian  
Association.

MARIE ROSALIE GRANT

Chicago, Illinois

*Music and Fine Arts*

Alpha Kappa Alpha Sorority, President  
of Delta Tau Iota Club, Vice  
President of S.C.A., Concert Singers,  
Choir, Alpha Kappa Mu.

GEORGIE ELIZABETH GRIFFIN

Mobile, Alabama

*English*

History Study Club, Tennessee State  
Players Guild.

MARY ALICE HALL

Antioch, Tennessee

*Mathematics*

Treasurer of Mathematics Club.

JOHNNIE VICTORIA HARRISON

Chicago, Illinois

*Music and Fine Arts*

Delta Tau Iota Club, College Choir,  
Home Economics Club.

CECIL FLOYD HARVEY

East St. Louis, Illinois

*Vocational Agriculture*

Kappa Alpha Psi Fraternity.



MARGURITE ELIZABETH GOODALL

Nashville, Tennessee

*History and Social Science*

History Study Club.

DOROTHY MAE GREER

Asheville, North Carolina

*Health and Physical Education*

Delta Sigma Theta Sorority, Alba  
Rosa Club, Concert Singers, Tennessee  
State Players Guild, Vice President  
Physical Education Club, Vice  
President Senior Sunday School  
Class, History Study Club.

ELIZABETH EWELL GRINSTEAD

Nashville, Tennessee

*Home Economics*

Zeta Phi Beta Sorority, Jewel of  
Lambda Eta Sigma, Home Economics  
Club.

DOVIE MAE HARRIS

Nashville, Tennessee

*English*

Delta Sigma Theta Sorority, Delta Tau  
Iota, Lambda Eta Sigma, History  
Study Club, Tennessee State Players  
Guild.

MARJORIE BROWN HART

Asheville, North Carolina

*Home Economics*

Pyramid Club, Alba Rosa Club, Student  
Christian Association, Home Economics  
Club, Tennessee State Players  
Guild.

INDIANOLA EZRA HAYES

Jackson, Mississippi

*Business Administration*

Chapter Editor of Omega Psi Phi  
Fraternity, Delta Phi Delta, Alpha  
Theta Omega Business Fraternity,  
History Study Club, Better Dormitory  
Club.

CHARLETA GWENDOLYN HICKS

Mobile, Alabama

*English*

Tennessee State Players Guild, Personality Group, Alba Rosa Club, Member of Ayeni Staff.



LUCILLE WILTON HICKS

Nashville, Tennessee

*Physical Science*

History Study Club, Student Christian Association, Science Club.

CHARLES MASON HOLLEY

Gary, West Virginia

*History and Social Science*

Kappa Alpha Psi Fraternity, President of International Relations Club, Student Christian Association, History Study Club.



HERBERT CLARENCE HOLMES

Buffalo, New York

*Pre-Medic*

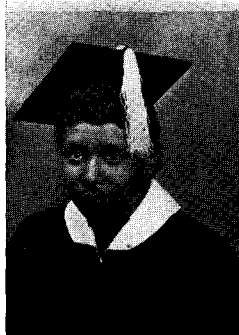
Omega Psi Phi Fraternity, Orchestra Manager, President of Chemical Society, History Study Club, Campus Personality Group.

BLANCHE LOUISE HOLT

Nashville, Tennessee

*Elementary Education*

Elementary Education Club.



GRACE ELISABETH HOWARD

Nashville, Tennessee

*Elementary Education*

Tennessee State Players Guild, Elementary Education Club, Miss Junior Class 1940, Secretary Senior Class 1942.

HELEN BOYD HOWARD

Nashville, Tennessee

*Elementary Education*

Elementary Education Club, Alpha Kappa Mu.



HELEN FRANCES HOWARD

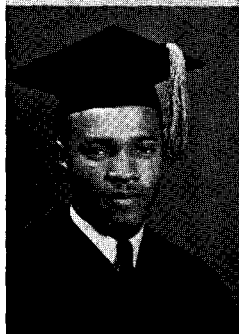
Nashville, Tennessee

*Physical Science*

MAHLON INMAN

Nashville, Tennessee

*English*



DRESDEN LOUISE JACKSON

Philadelphia, Mississippi

*Home Economics*

Alba Rosa Club, History Study Club, Home Economics Club.

ZEPHREE JACKSON

Chattanooga, Tennessee

*Home Economics*

Zeta Phi Beta Sorority, Alba Rosa Club, Home Economics Club.



CLARENCE JOHNSON

Rockwood, Tennessee

*History and Social Science*

Alpha Phi Alpha Fraternity, History Study Club.

MARY ELLEN JOHNSON

Nashville, Tennessee

*History and Social Science*

International Relations Club, History Study Club.

KENNARD COOPER JONES

Nashville, Tennessee

*History and Social Science*

Omega Psi Phi Fraternity, History Study Club, Senior Representative of Student Christian Association, President of Senior Class, Vice President of International Relations Club, Tennessee State Players Guild.

ROLAND ELBERT JONES

Toledo, Ohio

*Health and Physical Education*

History Study Club, Kappa Alpha Psi Fraternity, President of Physical Education Club, Student Christian Association, Varsity Basketball Team.

DOROTHY LELIA KILLEBREW

Nashville, Tennessee

*Elementary Education*

Elementary Education Club, History Study Club.

ANDREW WALLACE LEWIS

Milwaukee, Wisconsin

*Health and Physical Education*

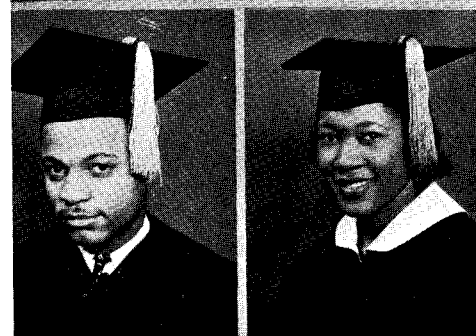
Kappa Alpha Psi Fraternity, History Study Club, Better Dormitory Club, Illinois Big Ten.

SARAH ELLEN LOVE

Athens, Tennessee

*Home Economics*

History Study Club.



ZOLA ALFONSIA JOHNSON

Monroe, Louisiana

*Home Economics*

Home Economics Club.

LOVELL EUGENE JONES

Nashville, Tennessee

*History and Social Science*

Forensic Society, International Relations Club, Concert Group and Choir, Omega Psi Phi Fraternity, History Study Club.

WILLIE MAE KIDD

Columbus, Mississippi

*Health and Physical Education*

Vice President of Zeta Phi Beta Sorority, Alba Rosa Club, Physical Education Club.

TEMPIE MAE LAY

Atlanta, Georgia

*Business Education*

Delta Sigma Theta Sorority, Alba Rosa Club, Lambda Eta Sigma.

MODESTINE LaDOSCA LOVE

Nashville, Tennessee

*Health and Physical Education*

Delta Sigma Theta Sorority, Physical Education.

ESAU SAMUEL McCASKILL

Candor, North Carolina

*Vocational Agriculture*

Vice President New Farmers c America, Phi Beta Sigma Fraternity, History Study Club, Better Dormitory Club.



LAURINE McCCLURE

Nashville, Tennessee

*Home Economics*

Home Economics Club, History Study Club.



MARGARET THERESA MARSH

Dickson, Tennessee

*Elementary Education*

Assistant Secretary Elementary Education Club, Alpha Kappa Alpha Sorority, Alba Rosa Club, History Study Club, Lambda Eta Sigma.

ANNIE MAI FARRIS MARTIN

Nashville, Tennessee

*Physical Science*

Science Club, Student Christian Association.



CHARITY MAE MARTIN

Clarksville, Tennessee

*Health and Physical Education*

History Study Club, Zeta Phi Beta Sorority, Alba Rosa Club.

VIRGINIA MAI MASON

Nashville, Tennessee

*Elementary Education*

Student Adviser of Lambda Eta Sigma, Assistant Secretary of Elementary Education Club, Property Manager of Tennessee State Players Guild, Zeta Phi Beta Sorority, Alpha Kappa Mu.



RUBY SUNBEAM MILLER

Louisville, Mississippi

*Home Economics*

Delta Sigma Theta Sorority, Alba Rosa Club, History Study Club, Home Economics Club.

SARAH BURNICE MILLER

Nashville, Tennessee

*History and Social Science*

History Study Club.



ETHEL LOTTIE MOORE

Nashville, Tennessee

*Elementary Education*

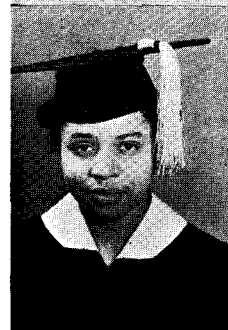
Elementary Education Club, Delta Tau Iota Club.

GRACE JUANITA MOORE

Evansville, Indiana

*Elementary Education*

Elementary Education Club, Delta Tau Iota, Lambda Eta Sigma.



MARIETTA MOORE

Sparta, Tennessee

*Home Economics*

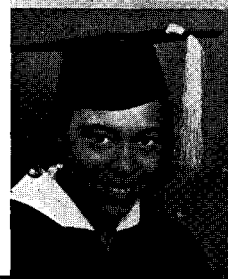
Zeta Phi Beta Sorority, H.S.C., Choir, Concert Singers.

MARTHA RITA MOORE

Nashville, Tennessee

*Mathematics*

Lambda Eta Sigma, Mathematics Club, Delta Tau Iota, History Study Club.



ADDIE ERNESTINE MORRIS

Memphis, Tennessee

*Home Economics*

Home Economics Club, Concert Group.

BERTHA LAURA MORROW

Nashville, Tennessee

*English*

Student Christian Association, Tennessee State Players Guild.



VERTA REE MOSLEY

Nashville, Tennessee

*Home Economics*

President of Home Economics Club.

ESSIE LEE MOTT

Nashville, Tennessee

*Business Education*



ETHEL BEATRICE MOTT

Nashville, Tennessee

*Business Education*

MARIE ALBERTA NICHOLS

Nashville, Tennessee

*Home Economics*

Home Economics Club.



PALLEN IZETTA NUBIA

Nashville, Tennessee

*Home Economics*

Tennessee State Players Guild, International Relations Club, Home Economics Club, Student Christian Association.

MOLLIE MONROE PAIGE

McMinnville, Tennessee

*Elementary Education*

Elementary Education Club.



JESSIE MAI PERKINS

Nashville, Tennessee

*History and Social Science*

International Relations Club, Tennessee State Players Guild, History Study Club.

HELEN ANASTEEN PIERSAWL

Wyoming, Ohio

*Elementary Education*

Elementary Education Club, Alba Rosa Club, Student Christian Association, Alpha Kappa Alpha Sorority, Lambda Eta Sigma.



ELLA BEATRICE POLK

Charlotte, Tennessee

*Elementary Education*

Elementary Education Club, Lambda Eta Sigma, Zeta Phi Beta Sorority, College Choir.

MILDRED C. POWELL

Nashville, Tennessee

*English*



ROBIN BEECHER PRINCE

Jacksonville, Florida

*History and Social Science*

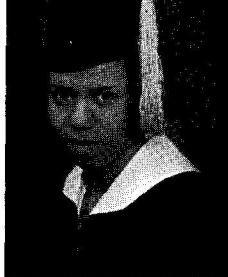
*History and Social Science*  
Club, Crescent Club, Alpha Kappa Mu.

EMMA MAE RICHARDS

Nashville, Tennessee

*English*

Ivy Leaf Club.



VIVIAN CLEVIE ROBINSON

Miami, Florida

*Business Education*

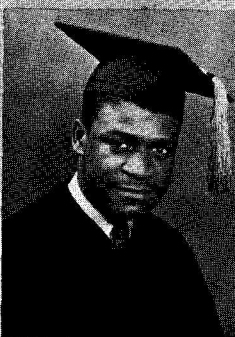
Alba Rosa Club, International Relations Club.

LUCINDA ROGERS

St. Louis, Missouri

*Elementary Education*

Zeta Phi Beta Sorority, History Study Club, Elementary Education Club.



MAJOR SPENCER SANDERS

Concord, North Carolina

*Vocational Agriculture*

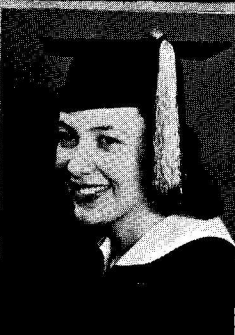
New Farmers of America, History Study Club.

MABEL ETTA SAUNDERS

Nashville, Tennessee

*Elementary Education*

Alpha Kappa Mu, Lambda Eta Sigma.



HELEN MARGUERITE SEENEY

Battle Creek, Michigan

*English*

Alpha Kappa Mu Honorary Fraternity, Secretary of Tennessee State Players Guild, Fourth Estate, Alba Rosa Club, Lambda Eta Sigma, Student Christian Association, History Club.

EDNA EARLE SHADWICK

Meridian, Mississippi

*Elementary Education*

Elementary Education Club.



MARGARET CARCILE SHERRELL

Knoxville, Tennessee

*English*

Tennessee State Players Guild, Lambda Eta Sigma, Student Christian Association.

ANNIE LUCILE SMITH

*Home Economics*

Nashville, Tennessee

Secretary of Home Economics Club.



ANITA CECIL SMITH

Nashville, Tennessee

*History and Social Science*

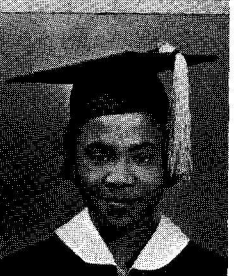
Chaplain of Delta Sigma Theta Sorority, Delta Tau Iota Club, Tennessee State Players Guild, International Relations Club, History Study Club.

HATTIE LOUISE SMITH

Nashville, Tennessee

*History and Social Science*

History Study Club, International Relations Club



MODESTINE VIRGINIA SMITH

Nashville, Tennessee

*English*

CARLTON ALEXANDER SPARKS  
Jacksonville, Florida  
*Pre Medic*

Alpha Kappa Mu Honorary Fraternity, Chaplain of Rho Psi Chapter of Omega Psi Phi Fraternity, Chemistry Club.

GLADYS ELIZABETH STARKS  
Louisville, Kentucky  
*Health and Physical Education*

Alpha Kappa Alpha Sorority, Lambda Eta Sigma, History Study Club, Physical Education Club.

GLADYS MAE STEWART  
Franklin, Tennessee  
*Home Economics*

Home Economics Club, Delta Tau Iota.

MARY FRANCES SUGGS  
Springfield, Ohio  
*Business Education*

Alpha Kappa Mu, Secretary of Delta Sigma Theta Sorority, Alba Rosa Club, Assistant Superintendent of Sunday School, Treasurer of Delta Phi Delta, Business Education Club, Jewel of Lambda Eta Sigma, Tennessee State Players Guild, Editor-in-Chief of 1942 Ayeni, S.C.A.

LEONARD DONALD THOMPSON  
Indianapolis, Indiana  
*Business Education*

Keeper of Finance of Omega Psi Phi Fraternity, History Study Club, Vice President of Tennessee State Players Guild, Business Education Club.

FANNIE BELLE TYLER  
Hopkinsville, Kentucky  
*Home Economics*

History Study Club, Home Economics Club.

GRACE LUCILE SPEARMAN  
Cleveland, Ohio  
*Business Education*

Epistoleus of Alpha Kappa Alpha Sorority, Concert Singers, College Choir, History Study Club, Theta Omega Business Fraternity, Alba Rosa Club, Student Christian Association, Personality Torch Bearers Club.

WILLIE IRWIN STEVENSON  
Hot Springs, Arkansas  
*Business Education*

Personality Torch Bearers, Alba Rosa Club, Delta Sigma Theta Sorority, Secretary of Forensic Society, Student Christian Association, Alpha Iota Business Fraternity, History Study Club, Miss Arkansas 1941.

JOSIE LEAVELLE STINSON  
Nashville, Tennessee  
*Elementary Education*  
Elementary Education Club.

MARINA SUMLIN-TAYLOR  
Nashville, Tennessee  
*Elementary Education*

Elementary Education Club, Home Economics Club.

NANCYE ESTHER TRUMBO  
Nashville, Tennessee  
*English*

Delta Sigma Theta Sorority, History Study Club, Tennessee State Players Guild.

DOROTHY VIRGINIA THOMPSON  
Nashville, Tennessee  
*Health and Physical Education*

Physical Education Club, History Study Club, Pyramid Club of Delta Sigma Theta Sorority.





ROSSA BEATRICE WATSON

Fort Valley, Georgia

*Business Education*

Alba Rosa Club, Alpha Iota Business Fraternity, Student Christian Association, History Study Club, Personality Group, International Relations Club.



LUTHER WEBB

Meridian, Mississippi

*History and Social Science*

History Study Club, Vice President of Senior Class.

NINA PAULINE WIER

Frankfort, Indiana

*History and Social Science*

History Study Club, Tennessee State Players Guild, Delta Tau Iota Club.



THELMA HARRIETTE WHITAKER

Chattanooga, Tennessee

*English*

Alba Rosa Club, History Study Club, College Choir, Tennessee State Players Guild, Student Christian Association, Lambda Eta Sigma Fraternity.

ULYSSES WILHOITE

Tullahoma, Tennessee

*History and Social Science*

President of History Study Club, President of Beta Omicron Chapter of Alpha Phi Alpha Fraternity, International Relations Club, Tennessee State Players Guild.



ELGERTHA ADAMS WILLIAMS

Nashville, Tennessee

*English*

MARY JULIA WILSON

Providence, Kentucky

*Health and Physical Education*

Alpha Kappa Alpha Sorority, Delta Tau Iota Club, Health and Physical Education Club, Tennessee State Players Guild, Miss Tennessee '36.



RITA BARBARA WILSON

Mobile, Alabama

*Music and Fine Arts*

Delta Sigma Theta Sorority, Alba Rosa Club, Lambda Eta Sigma, Tennessee State Players Guild, Concert Group, History Study Club.

ANNIE BELL WINFREY

Atlanta, Georgia

*Business Education*

Delta Sigma Theta Sorority, History Study Club, Delta Tau Iota Club.



HATTIE FAY YOUNG

Nashville, Tennessee

*English*

LORENE ANNABELL LEWIS

Omaha, Nebraska

*History and Social Science*

Delta Sigma Theta Sorority, President of Alba Rosa Club, History Study Club, Tennessee State Players Guild.



NAOMI SEWELL WILSON

Washingtonville, New York

*Elementary Education*

Elementary Education Club, Alpha Kappa Mu.

TESSIE ALTHEA BALLARD  
Montgomery, Alabama

*Health and Physical Education*

Delta Tau Iota Club, Physical Education Club, Forensic Society, International Relationship Club, History Study Club.

MARY LUCILLE GRIFFIN  
Nashville, Tennessee

*English*

Secretary of Zeta Phi Beta Sorority, Dean of Pledges of Lambda Eta Sigma, History Study Club, Copy Editor of Ayeni Staff, Choir.

VELZORA PERSON NICHOLSON  
Nashville, Tennessee

*Home Economics*

Home Economics Club.

LOUIS ALDRICH WILSON, JR.  
Nashville, Tennessee

*Industrial Education*

Omega Psi Phi Fraternity, Concert Singers, History Study Club.

WILHELMINA HENDERSON PRATT  
Jacksonville, Florida

*Business Education*

Archonian Club of Zeta Phi Beta Sorority.

RUBY VIRGINIA NIXON  
Nashville, Tennessee

*Elementary Education*

Elementary Education Club, International Relations Club.

JERRY BUNDY

Johnson City, Tennessee

*Health and Physical Education*

Kapapa Alpha Psi Fraternity.

ALFRED KING

Nashville, Tennessee

*English*

JUNIUS MCCONICO STEVENSON

Hot Springs, Arkansas

*Pre Medic*

Omega Psi Phi Fraternity, Tennessee State Collegians, College Band, Science Club.

WILLIAM WORTHAM

Memphis, Tennessee

*Agriculture*

Omega Psi Phi Fraternity; History Study Club.

MELVINA SHOCKLEY

Nashville, Tennessee

*Home Economics*

Home Economics Club.

ESSIE B. PARRAM

Whiteville, Tennessee

*History and Social Science*

History Study Club; International Relations Club.

# The Class of '42

Upon our graduation day  
Our homage we have come to pay  
To this our school of great acclaim  
We now do honor to thy name.

Our road was not an easy one  
We had to struggle to go on  
For things worth-while are not obtained  
Or cheaply purchased—void of pain.

O! Alma Mater, Mother of Mine  
Your constant service to mankind  
Has helped this State, this Nation too,  
Develop men and women true

To higher principles, nobler views  
And love of duty did infuse.  
Therefore today we sing thy praise  
As now throughout the coming days.

We take our place in life's great game  
And glorify our great school's name  
That coming generations may  
Enjoy the memories of this day.

Life now doth offer to each one  
Whose work is found to be well done  
A privilege to take his place  
Among the leaders of this race.

—Marietta Moore,  
Class of '42

## Class Song

"The Class of '42"  
(Tune: America, The Beautiful)

We love and cherish our dear class,  
An strive to do the best  
To make it ever eminent  
And nobler than the rest.  
And our dear class of '42  
Will love and cherish you  
Be faithful to our class colors  
The red, and white, and blue.

From thee our Alma Mater dear,  
We know we'll have to part  
But no one else can emulate  
Your place within our hearts  
When we have passed beyond these gates  
For your precepts we'll fight,  
With that same fervor which defends  
Our red and blue and white.

—Chequita Dunscomb,  
Class of '42

# Junior Class



## CLASS OFFICERS

Jesse Dupee, President; Charleston, West Virginia.  
Roy Campbelle, Jr., Vice-President; Nashville, Tennessee.  
Carrie Garrett, Secretary; Clarksville, Tennessee.  
Irene Baker, Assistant Secretary; Kalamazoo, Michigan.  
Julius McMillan, Treasurer; Nashville, Tennessee.  
Clarence Carter, Co-Treasurer; Sylvester, Georgia.

## ADVISERS

Prof. F. J. D. McKinney, Mrs. C. B. McKinney, Prof. M. R. Eppse:



# Sophomore Class

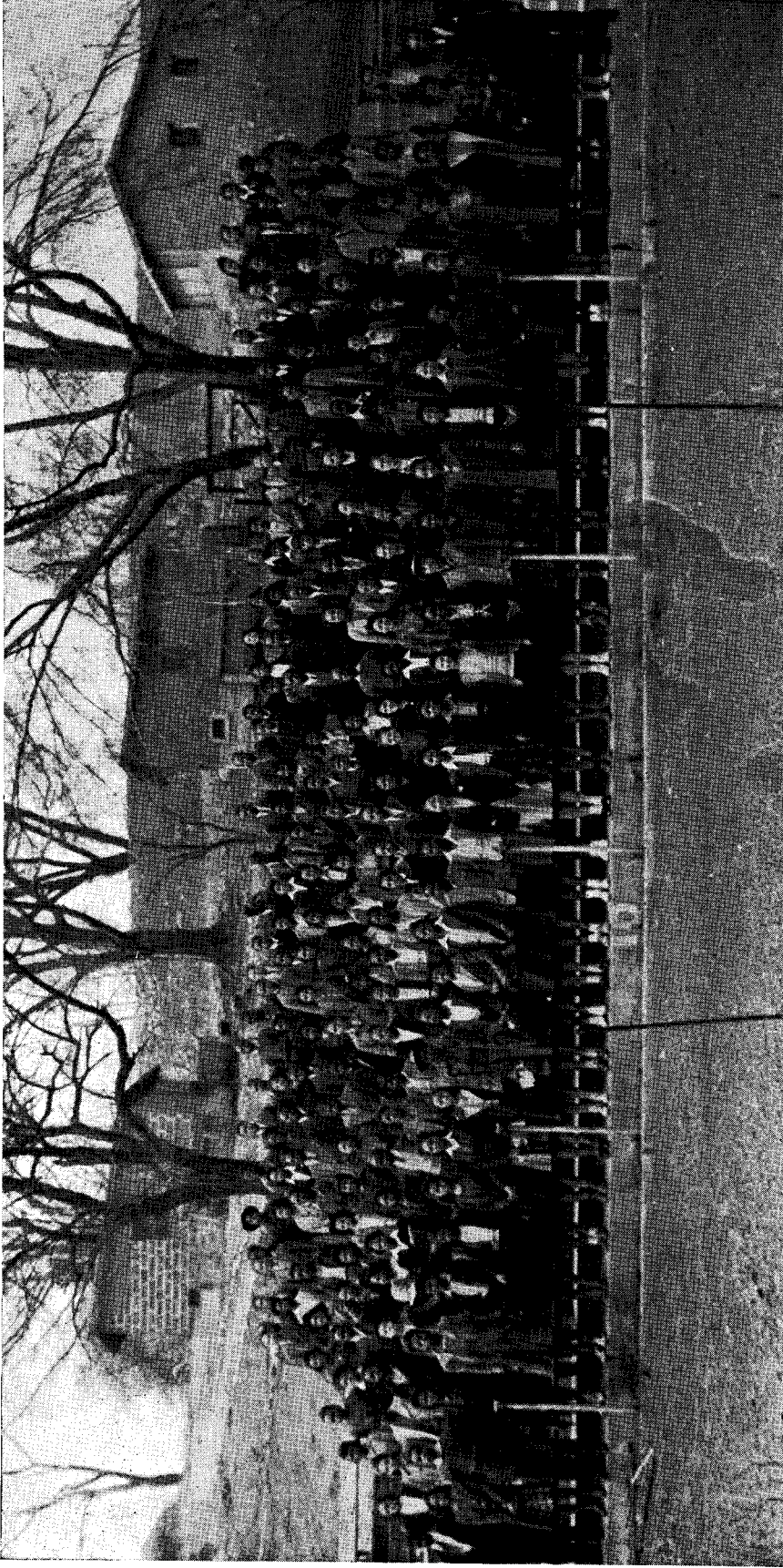


## CLASS OFFICERS

John W Sheppard, President; Cape Girardeau, Mississippi.  
Henry A. McClaron, Vice-President; Nashville, Tennessee.  
Virgie G. Hale, Secretary; Nashville, Tennessee.  
Margaret Inston, Assistant Secretary; Mobile, Alabama.  
Clarence E. O'Neal Jr., Treasurer; Hopkinsville, Kentucky.

## ADVISERS

Miss L. M. Averitte, Mrs. A. D. Jones, Mrs. F. A. Sanders.



# Freshman Class

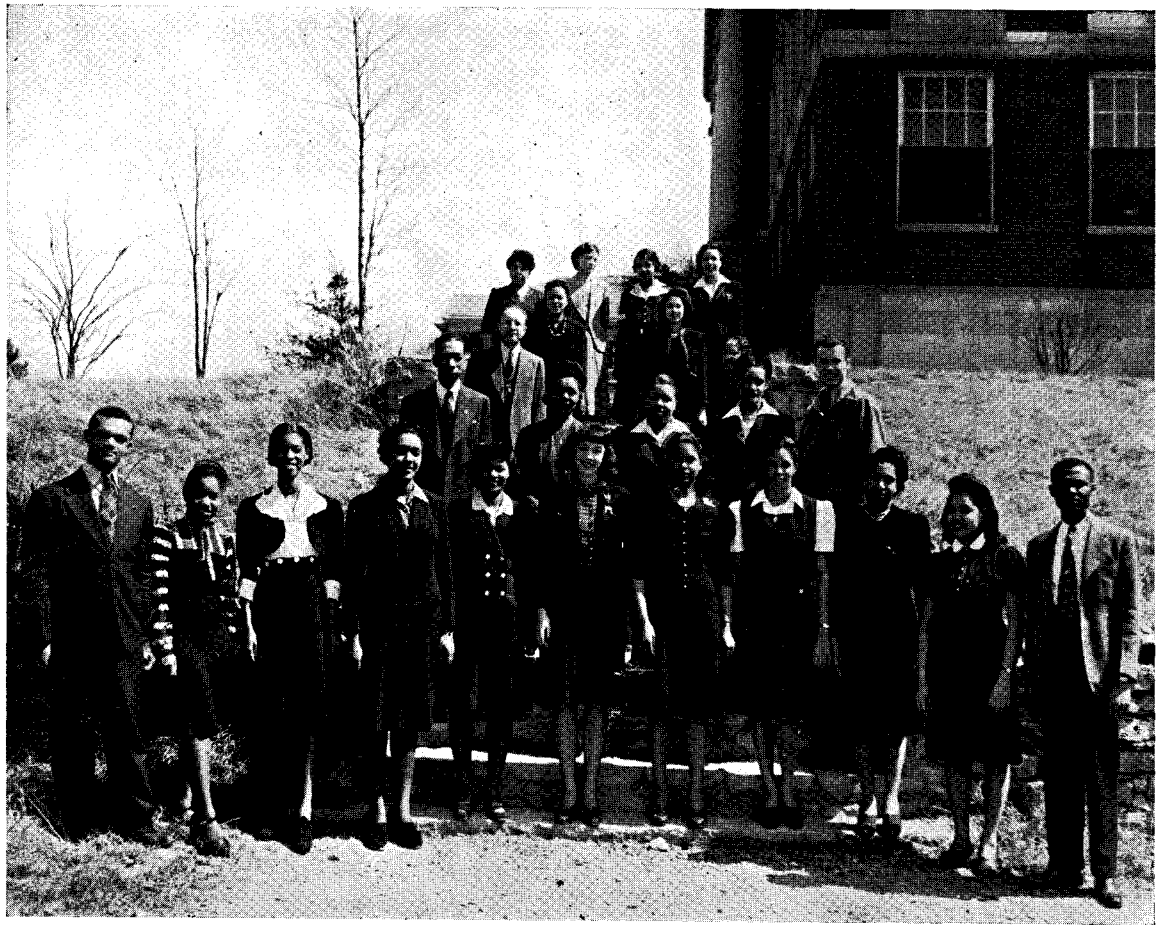
## CLASS OFFICERS

John Buford, President; Chicago, Illinois.  
Milton Crook, Vice-President; Chattanooga, Tennessee.  
Lillian Mary Rhodes, Secretary; Nashville, Tennessee.  
Johnnie Sharp, Assistant Secretary; Gary, Indiana.  
Alvin Hayes, Treasurer; Little Rock, Arkansas.

## ADVISERS

Miss Gwendolyn Hale, Miss Lois H. Daniel, Miss Z. L. Redmond, Mr. Ballard.

# Alpha Kappa Mu



## ALPHA KAPPA MU

Alpha Kappa Mu Honor Society is an outgrowth of the National Federation of Honor Societies in Negro Colleges which held its initial meeting at A and I. State College during the celebration of the twenty-fifth anniversary, November 26, 1937. At the annual meeting of 1939 the present name was accepted, and since this time it has grown to include twenty-two chapters located in the various Negro colleges. Our campus chapter had as its forerunners Sais Society organized in 1918; Pi Kappa Nu in 1930; Phi Beta Tau in 1931. The latter name was retained for the local chapter, a privilege granted all charter members of Alpha Kappa Mu in 1939. At present Miss Ethel Holland is National Vice-President, and Dr. G. W. Gore, Jr., is a member of the National Executive Committee.

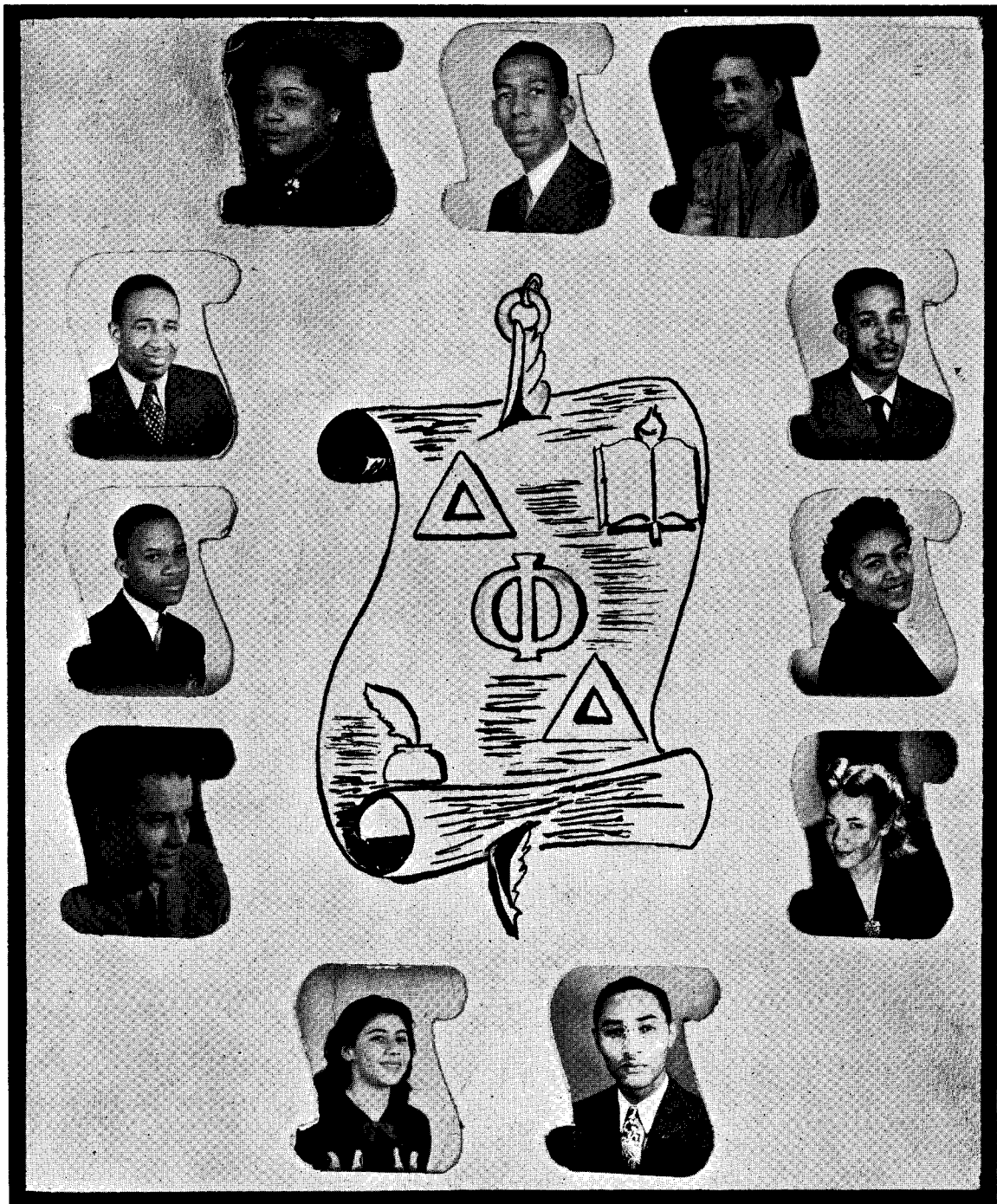
The purpose of Alpha Kappa Mu is to promote high scholarship; to encourage sincere and zealous endeavor in all fields of knowledge and service; to cultivate a high order of personal living; to develop appreciation for scholarly work and scholarly endeavor in others. Any junior or senior in the college whose cumulative average is 2.3 or above is eligible for membership.

Phi Beta Tau Chapter has sponsored as its major contributions to campus life "The Fine Arts and Lecture Series" which included monthly presentations of outstanding scholars in their respective fields; and has given special recognition in the form of a Dinner Dance to all students whose names appeared on the Honor Roll during the academic year.

## OFFICERS

G. W. Gore, Jr., President; Lois H. Daniel, Recording Secretary; Mary E. Forbes, Assistant Recording Secretary; Alma Dunn Jones, Corresponding Secretary; Rachel Patillo, Treasurer.

# DELTA PHI DELTA



Officers of 1941-42 are as follows:

Earl Bass, Jr., President; Halbert E. Dockins, Vice-President; Tranny P. Arnold, Secretary;  
Clarice Chambliss, Assistant Secretary; Mary F. Suggs, Treasurer.

## MEMBERS

Helen Seeney, Edward Hale, Joanna Strong, Indianola Hayes.

## ADVISERS

Dr. G. W. Gore, Jr., Mrs. A. Dunn-Jones, Miss Lois Daniel.

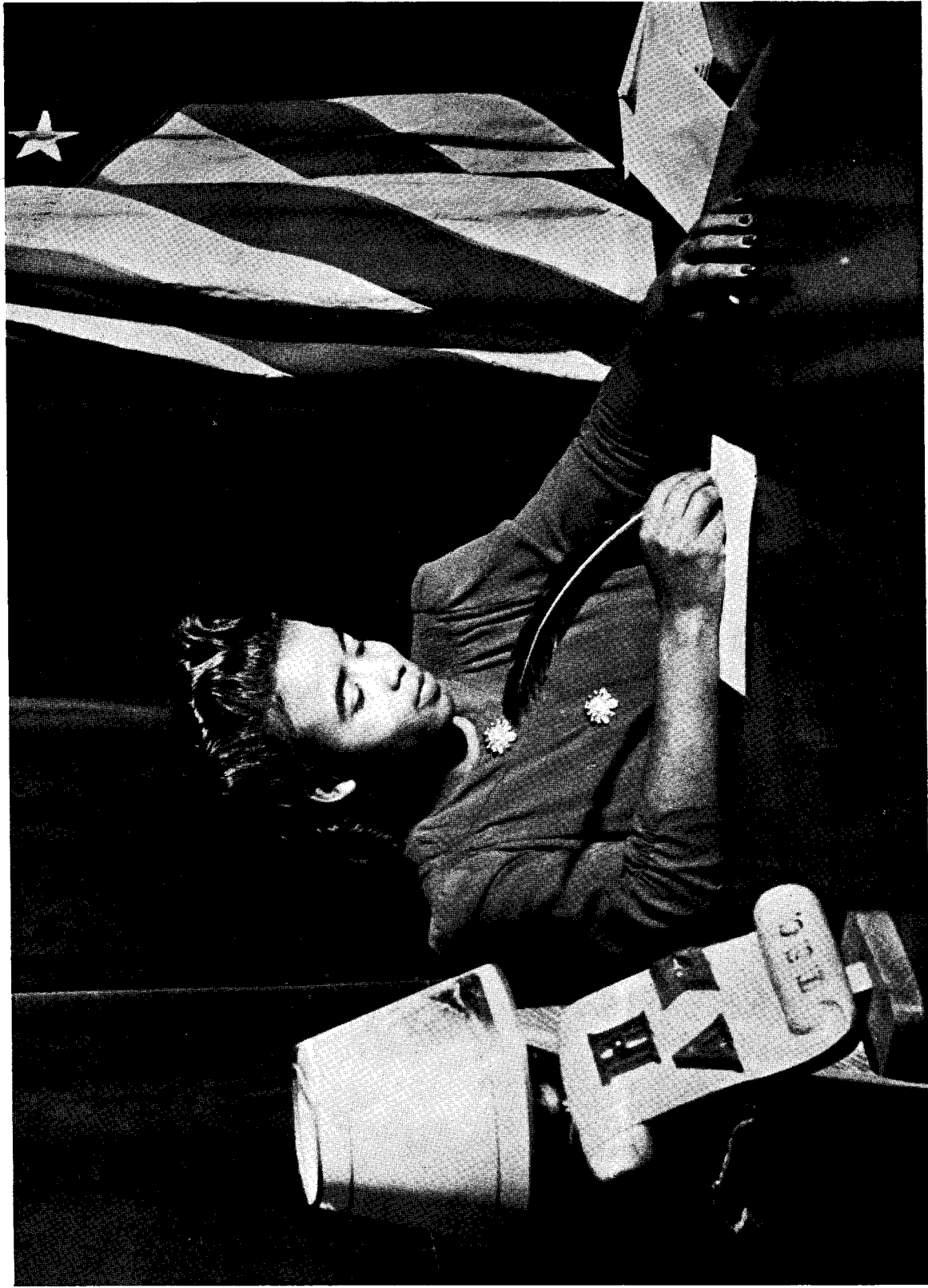
*Thirty-eight*



# ALPHA CHAPTER Lambda Eta Sigma



# Miss Lambda Eta Sigma



MISS EVELYN ELLIOTT DUMAS, Senior

# Graduate Chapter, Lambda Eta Sigma



## ALPHA GAMMA CHAPTER

	Mildred E. Clift, <i>President</i>	Zelma L. Redmond, <i>Founder</i>	
W. J. Hale	Eunice Matthew, <i>Secretary</i>	Pearl Gore, <i>Vice President</i>	Harriett Hale
A. V. Boswell	Alma D. Jones	Margaret Campbell	R. B. J. Campbell
Gwendolyn C. Hale		E. J. Vernon, <i>Cor. Secretary</i>	
	Edward H. Hale		
	George W. Gore, Jr.	Janie E. Elliott	
	Thomas E. Poag, <i>Treasurer</i>		



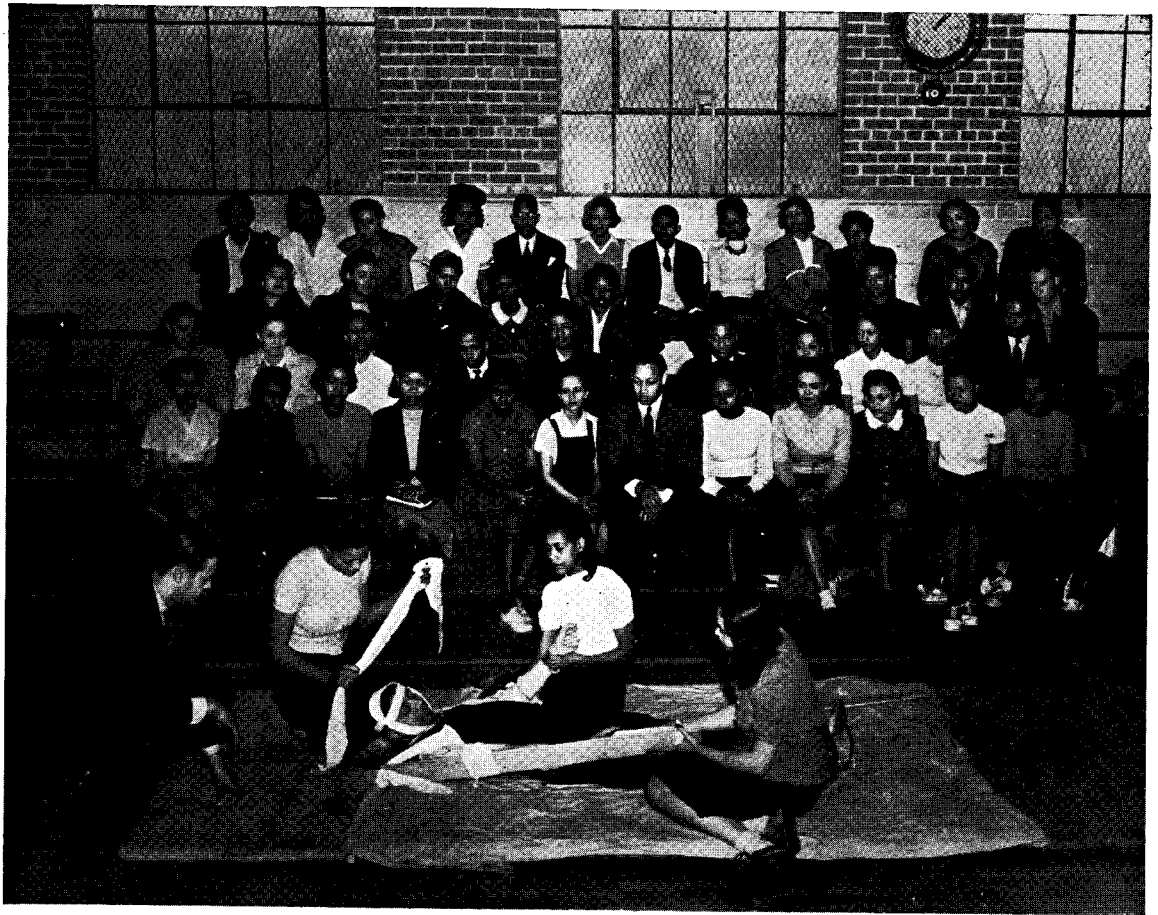
QUILL CLUB, ALPHA CHAPTER

LAMBDA ETA SIGMA

QUILL CLUB, BETA CHAPTER



# Red Cross Unit



## THE VOLUNTEER FIRST AID DETACHMENT

The department of Health and Physical Education in cooperation with the Nashville Chapter of the American Red Cross, trains individuals for Civilian Defense.

The Red Cross Volunteer First Aid Detachment has the distinction of being one of the first of its kind to be certificated at a Negro institution of learning.

These students have completed both the Standard and Advanced First Aid Courses for Civilian Defense, and Air Raid Warden requirements.

The purpose of the Volunteer First Aid Detachment is to make available and effective in emergencies the services of persons trained in First Aid and in supplementary emergency procedures. These trained students are known and identified through the Detachment, and are a part of a planned organization functioning under adequate leadership. They are immediately available and close at hand to give assistance among those with whom they work or where they are located.

The Detachment is under the supervision of Mr. T. H. Hughes, III. (Mobile Unit A.R.C.)

## ROSTER

Gwendolyn Hale, (Instructor); Edward Hale, (Instructor); Theodore Gould, (Instructor); Neal McAlpin, (Instructor); F. J. D. McKinney, (Instructor); Andrew Lewis, (Instructor); Mattie Babb, Althea Ballard, Dave Ella Battle, Prestine Blackman, Ambrizella Brewer, Jerry Bundy, Viola Candler, Tulipe E. Claiborne, James Cleveland, William Cox, H. Edith Dennard, Evelyn Dumas, Chequeta Dunscomb, Carl Elston, Edwa T. Fayard, Thomas Glymph, Dorothy Greer, Wilma Hennings, Herbert Holmes, Theo E. Howard, Lovell Jones, Roland Jones, Willie Mae Kidd, Modestine Love, Ruth Lowe, Geneva Madison, Margaret Marsh, Annie Martin, Charity Martin, Laurine McClure, Marion McCoy, James McMillan, Verta R. Mosley, Juanita Parker, Beatrice Polk, Vivian Robinson, Robbie Rogers, Myrtis Simpson, Gladys Starks, Gladys Stewart, Josie Stinson, Dorothy Thompson, Fannie Beile Tyler, Pauline Wier, Mary Julia Wilson, Louis A. Wilson, Carrie Mae Wiley, Hattie Young.

We dedicate ourselves to the safety and care of all at A. and I. State College.



# Alpha Kappa Alpha Sorority

## Alpha Psi Chapter



Since the establishment of Alpha Kappa Alpha Sorority at Howard University in 1908 its membership has increased to more than 2000. High scholastic and ethical standards and the assumption of civic responsibilities underlie its program. Alpha Psi Chapter established at A. and I. on May 13, 1932 in celebrating its Tenth Anniversary reviews its efforts to contribute to campus life. Its "Welcome to A. and I." project of meeting trains and busses at the opening of each school year has been carried out for the past five years. Its representation in Alpha Kappa Mu scholastic society is greater than any other organization on the campus, at present including Ethel Holland, National Vice-President, Myrtle Banks, Gladys Burgess, Marie Grant. Its members are active in all phases of campus life, and as a result it received the History Study Club "Achievement Cup" at the 1941 commencement. During the present year its program has included the presentation of the first president of the Ivy Leaf Club of 1932, Miss Lois H. Daniel, as its Sunday School speaker; and for its annual vespers the presentation of one of its charter members, Mrs. Alma Dunn-Jones and her "Choric Speech Group" as a climax to the Tenth Anniversary Celebration. Our campus "Service Flag" honoring our State College men in training was made and presented by the chapter.

### OFFICERS

Myrtle L. Banks, Basileus; Mazarene D. Terrell, Anti-Basileus; Frances L. Curry, Grammateus; Grace L. Spearman, Epistoleus; Evelyn E. Dumas, Tamiochus; H. Anasteen Piersawl, Dean of Pledges; Sara E. Payne, Sentinel; H. Edythe Dennard, Hodegos; Katheryn Coleman, Parliamentarian; Marie Grant, Reporter to Ivy Leaf; Lois H. Daniel, Adviser; Modestine Young, Co-Adviser.

### MEMBERS

Frances A. Berry, Gladys M. Burgess, Georgia Coleman, Martha E. Dumas, Chequeta Dunscomb, Annie H. Galloway, Ethel M. Holland, Margaret T. Marsh, Gladys E. Starks, Cecelia H. Streeter, Mary J. Wilson.

# Alpha Kappa Alpha Sorority



# The Ivy Leaf Club



The extra-curricula activities sponsored by the students on our campus consist of programs of a cultural and social nature. During the year the Ivy Leaf Club of Alpha Kappa Alpha Sorority made definite contributions to this phase of campus life.

For its annual vesper program the Ivy Leaf Club presented a graduate of the college, S. E. Grinstead, who spoke on, "Self-Expression of the American Negro in Literature Since 1760." In conclusion of this event the pledge clubs of the various organizations were honored by a "Little Greek Medley."

The annual Easter Morning Sunday School consisted of a play, "The Risen Lord," in which every member participated enthusiastically. As usual all arrangements for the Easter Egg Hunt following the Service were made by the members of the club.

One hundred per cent cooperation was given to the various civic programs, such as the "March of Dimes," the "Red Cross," and the purchase of Defense Stamps.

## OFFICERS

Margaret Inston, President; Thelma Thomas, Vice-President; Martha Farmer, Secretary; Georgia Lyles, Treasurer.

## MEMBERS

Mattie S. Adams, Eunice Bush, Johnnevelyn Carrington, Georgietta Cobb, Cleo Hendrix, Theo Hicks, Malvine Hughes, Robbie Law, Marie McDonald, Savada Murray, Mary Ann Pride, Doris Ready, Lillian M. Rhodes, Emma Richards, Elaine Sherrill, Rena Thorbourne, Octavia Ware, Emma Lee Wiley, Louise Willis.

Beta Omicron Chapter  
Alpha Phi Alpha



# Beta Omicron Chapter

# Alpha Phi Alpha

*Motto: "First of All, Servants of All, We Shall Transcend All."*

Seven young men of Cornell University, 1906, founded the first Negro Fraternity, namely Alpha Phi Alpha. With a slogan of Scholarship, Fellowship and Devotion, the organization was soon established in other colleges until now there are one hundred and sixty-four chapters located in various parts of the United States and foreign countries. Among noteworthy activities sponsored by the fraternity are the "Go To High School—Go To College" movement and the "Education for Citizenship" campaign.

Twenty-four years later, in the year 1934, seven young men founded the fifty-sixth chapter of Alpha Phi Alpha, Beta Omicron. It was thus, therefore, the youngest "Frat" (locally). Since then it has helped mould high aims and ideals into the lives of many young men who have gone from the college to become leaders in all walks of life.

The Chapter at present has fifteen members, including many outstanding personalities. Brother William Earl Dickerson is a member of the Better Dormitory Club, Student Christian Association, Forensic Society, History Study Club, Tennessee State Players Guild. Brother William H. Powell, Jr. is a member of the Student Christian Association, N.F.A., Forensic Society. Brother Ulysses Wilhoite is President of the History Study Club, International Relations Club and Tennessee State Players Guild. Brother Joseph N. Stevens is Assistant Editor of the Sphinx, President of the Better Dormitory Club, Associate Secretary of the N.F.A., Member of the Forensic Society and a member of the State Players Guild. Brother Joseph Thomas is a member of the Forensic Society, Tennessee State Players Guild, Vice President of the Chemistry Club, Better Dormitory Club, Student Christian Association. Brother Clarence Johnson is a member of the History Study Club, International Relations Club. Brother R.B.J. Campbelle is a member of the History Study Club, Quill Club, Business Manager of Tennessee State Players Guild, Vice President of Junior Class, General Secretary of Ayeni Staff.

*"As long as there is one man with the true spirit, Alpha Phi Alpha will go on."*



# Sphinx Club



The Sphinx Club of Beta Omicron Chapter of Alpha Phi Alpha Fraternity was organized on the Campus of A. and I. State College in 1934.

Symbolized by its emblem, the mighty Sphinx, the Sphinx Club is composed of men who are aspiring to become members of the Alpha Fraternity.

In keeping with its principles, the Sphinx Club cooperates in all of the activities of the campus, including Sunday School, Quiet Hour Services and Sunday Evening Vespers.

## OFFICERS

Andrew P. Torrence, President; William C. Turner, Vice-President; Jesse W. Miller, Secretary; Arthur L. Horne, Assistant Secretary; Maurice Hickman, Treasurer; Frank Ballard, Chaplain.

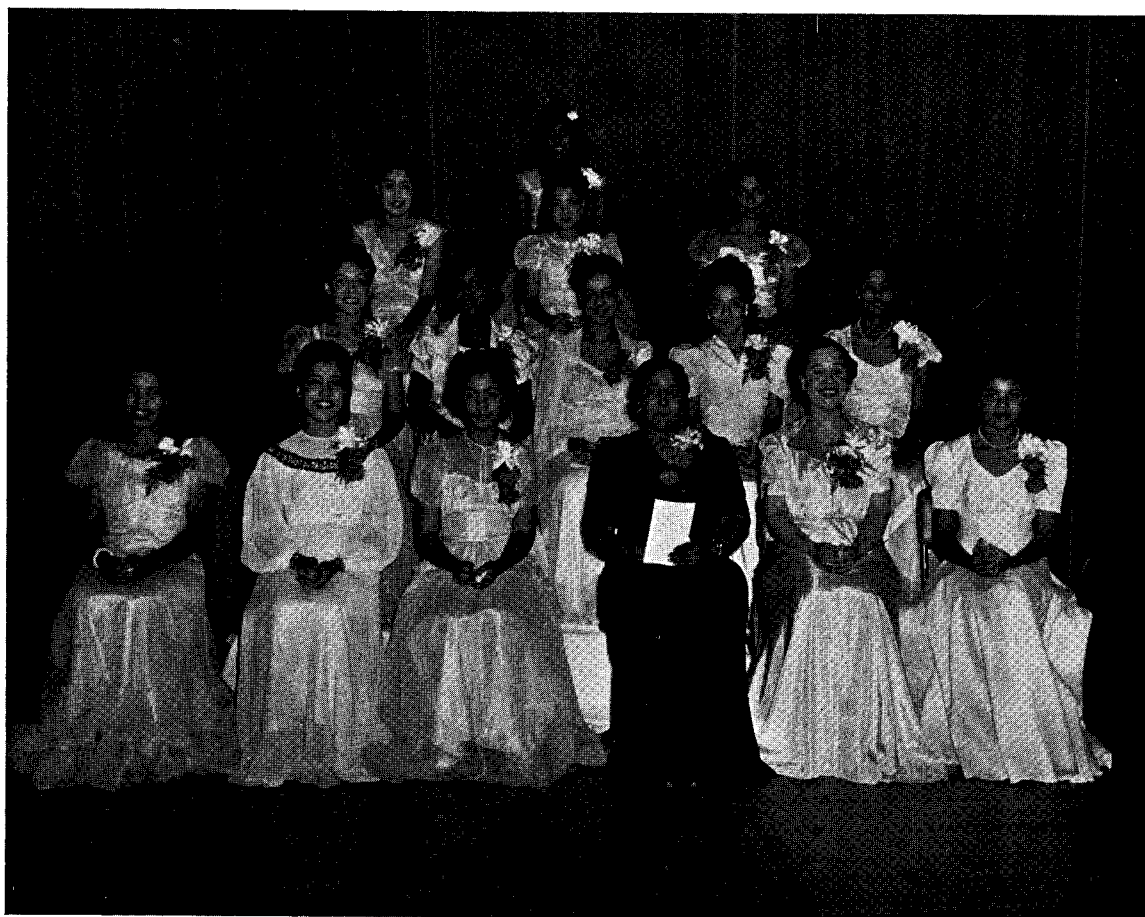
## ROSTER

Frederick D. Robinson, Warren L. Benbow, Henry McClaron, Lloyd Allen, Harold Connor, James Moxley, George Breathett, Clarence Kimbrough, John Jordon, Alvin Hayes.



Delta Sigma Theta

# THE PYRAMID CLUB



The Pyramid Club of Delta Sigma Theta Sorority aims to promote finer womanhood, and encourage high scholastic standing.

Its outstanding activities for the school year 1941-42 consist of "Quiet Hour," "Sunday School," and "Vesper Services." Miss Helen Work was the distinguished speaker for its Vesper Services.

The Pyramid Club shall ever work to be an integral part of the A. and I. Campus life, and a credit to Delta Sigma Theta Sorority.

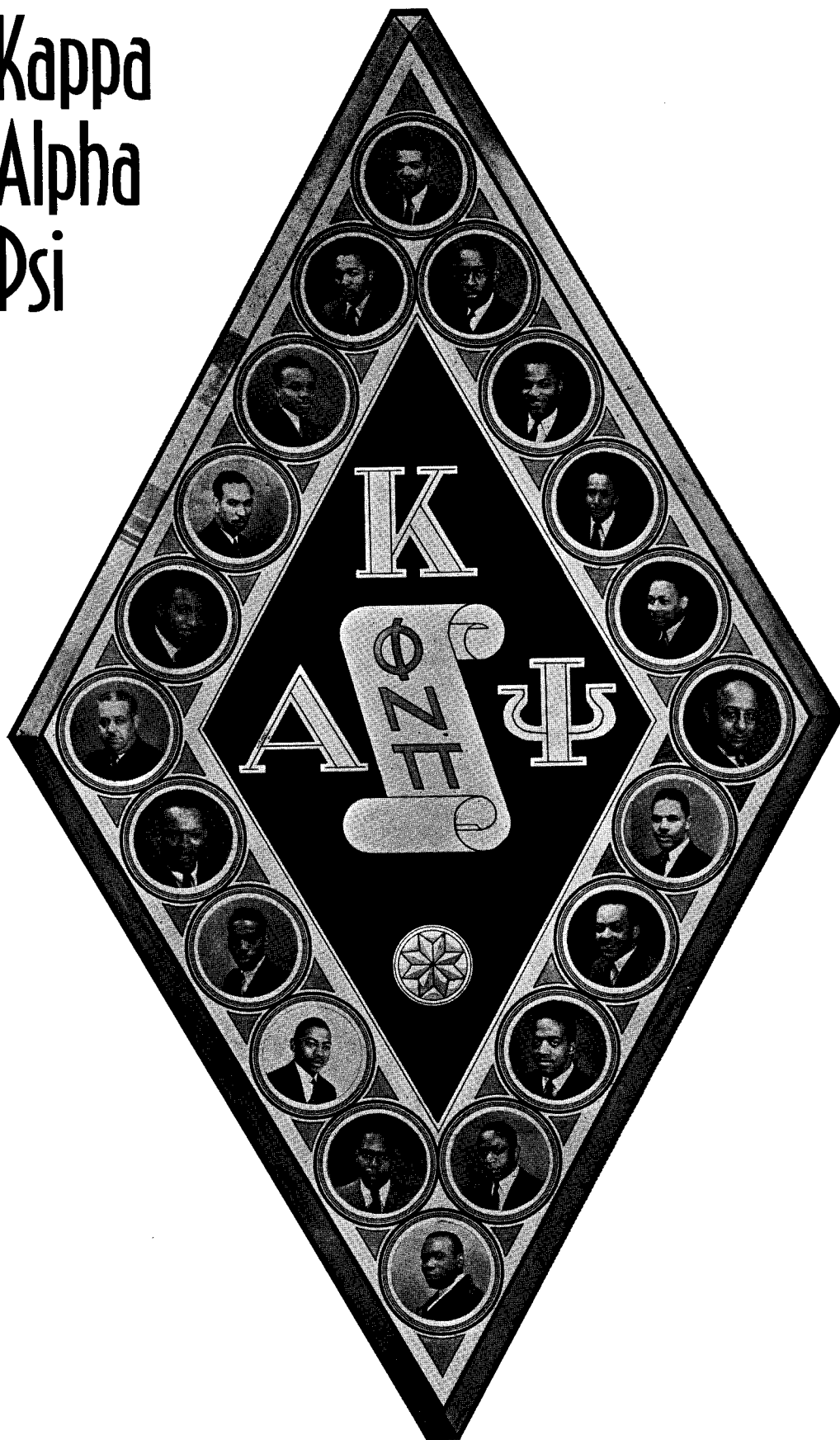
## OFFICERS

Eugenia L. Mobley, President; Alma Pendleton, Vice-President; Dorothy Thomas, Secretary; Sadie Kaiser, Treasurer; Marjorie Hart, Sergeant-at-Arms; Rabun McCormick, Reporter.

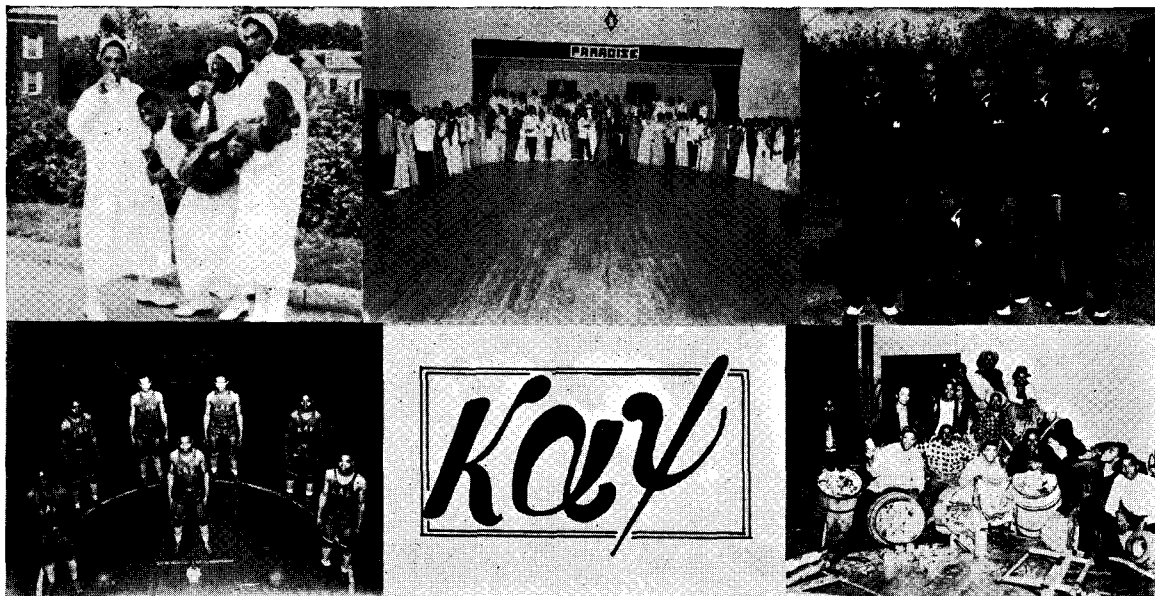
## MEMBERS

Ruth Durham, Avis Ewing, Marjorie Hart, Sadie Kaiser, Rabun McCormick, Ernestine Mitchell, Eugenia Mobley, Alma Pendleton, Charlesetta Spurlock, Alverine Strong, Dorothy Thomas, Clintonia Thompson, Dorothy Thompson.

Kappa  
Alpha  
Psi



# Kappa Alpha Psi



The fundamental purpose of Kappa Alpha Psi is achievement. It was with this purpose in mind that ten men at Indiana University on January 5, 1911 founded what is now known as Kappa Alpha Psi Fraternity.

The Alpha Theta Chapter of Kappa Alpha Psi Fraternity was established at Tennessee A. and I. State College, May 23, 1931. Its existence has from this date been justified through the many activities which have been sponsored. The annual program of Kappa features on the campus this year are as follows: Kappa Kountry Carnival, a medium through which 75 baskets of food were given less fortunate people during the Yuletide season; Sunday School, through which a new type of public program was instituted; Vesper Services; a \$25 contribution to the Community Chest; Observance of Guide Right Week; a smoker for new students and freshmen and the annual spring dance, one of the most attractive affairs of the season.

## OFFICERS

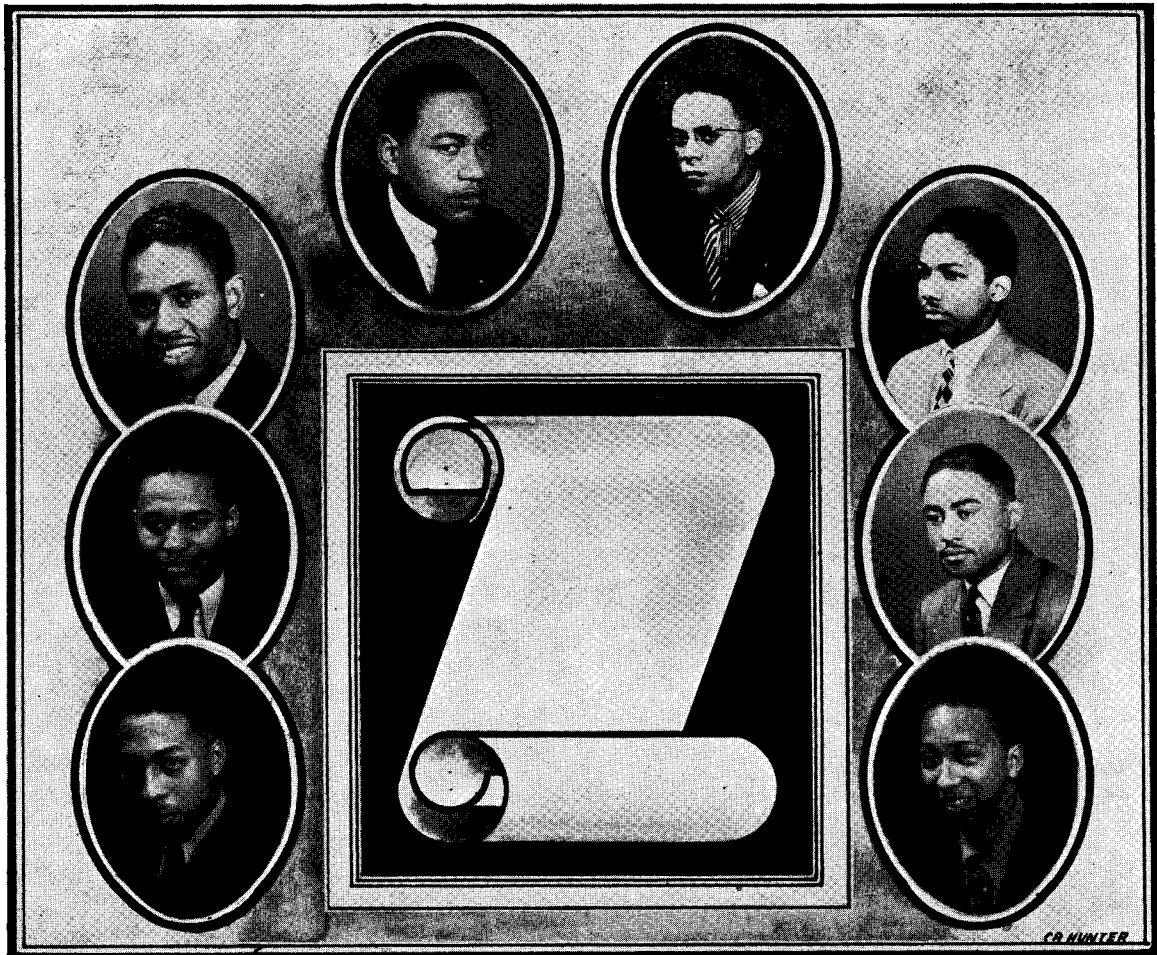
Jessie Obie Dupee, Polemarch; Earl Alphonso Foster, Vice-Polemarch; Cecil Armillo Partee, Keeper of Records; James Edward Farrell, Keeper of Records; William Allen Mayes, Strategus; Roland Orlando E. Jones, Dean of Pledges; Charles Mason Holley, Lieutenant Strategus; Cecil Floyd Harvey, Historian.

## ROSTER

John Lewis Clay, John Allen Gregory, Clinton Maceo Nelson, Jr., James Frank Perkins, John Wesley Sheppard, William Henri Stubblefield.



# Scrollers Club



The Scrollers Club of Alpha Theta Chapter was organized in 1930, and since that time, has successfully defended its reputation of being one of the outstanding pledge clubs.

They have distinguished themselves in sports, music, art and scholarship. From the rank of the Scrollers Clubs have come honor roll students, orchestra leaders, journalists and countless others of diversified talents.

# Phi Beta Sigma



## ZETA ALPHA CHAPTER OF PHI BETA SIGMA FRATERNITY

The Zeta Alpha Chapter of Phi Beta Sigma Fraternity was founded on the Tennessee State College campus May 1, 1931 by Brother Chesler Owens and Alger V. Boswell. Acting members were Roger P. Bailey, Theocia O. Homer Carter, Searcy C. Harris and Walter L. Vickers.

The fraternity has as its motto, "Culture for Service and Service for Humanity;" its slogan, "Bigger and Better Business for Negroes."

National Business Week is set aside annually having as its theme the betterment of Negro businesses.

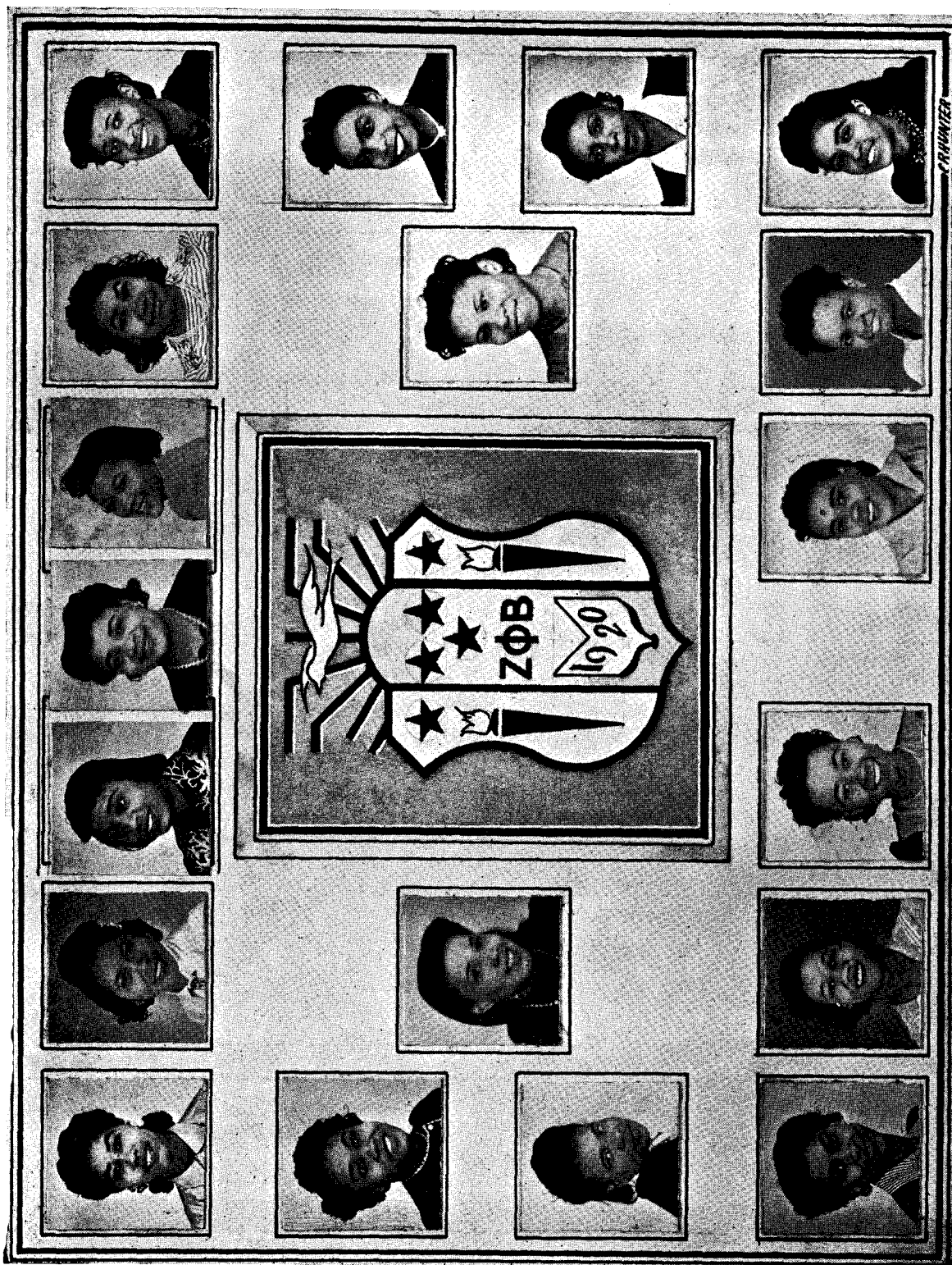
Under the auspices of the Zeta Alpha Chapter of the Phi Beta Sigma Fraternity, a scholarship is given annually to the outstanding freshman or sophomore who best demonstrates his oratorical ability.

Fraternities act as a stimulant to keep the traditions of colleges and universities alive, and help to create loyal alumni.

Zeta Alpha Chapter has contributed much to the culture and social outlook at Tennessee State College. Some of the programs the organization features annually are:

1. Vesper Services—celebrating bigger and better businesses for Negroes.
2. Sunday School—celebrating Mothers' Day.
3. An oratorical contest—displaying Freshmen and Sophomores' oratorical talent.
4. A smoker for Freshmen and New Students.
5. An Annual Spring Dance, gala event of the year.

# Zeta Phi Beta



## EPSILON ALPHA CHAPTER OF ZETA PHI BETA SORORITY

Zeta Phi Beta Sorority was founded January 1920 on the Howard University campus. Epsilon Alpha Chapter of Zeta Phi Beta Sorority was established on A. and I. campus, February 19, 1933 with six young college women as charter members.

# Archonian Club



## ZETA PHI BETA SORORITY

The Archonian Club has grown to be one of the largest pledge clubs on the campus. The success of the Club depends largely upon the active efforts of adviser, Mrs. Marie Brooks Strange.

Its outstanding activities for the school year 1941-42 consists of a "Quiet Hour," "Vespers" and a "Sunday School."

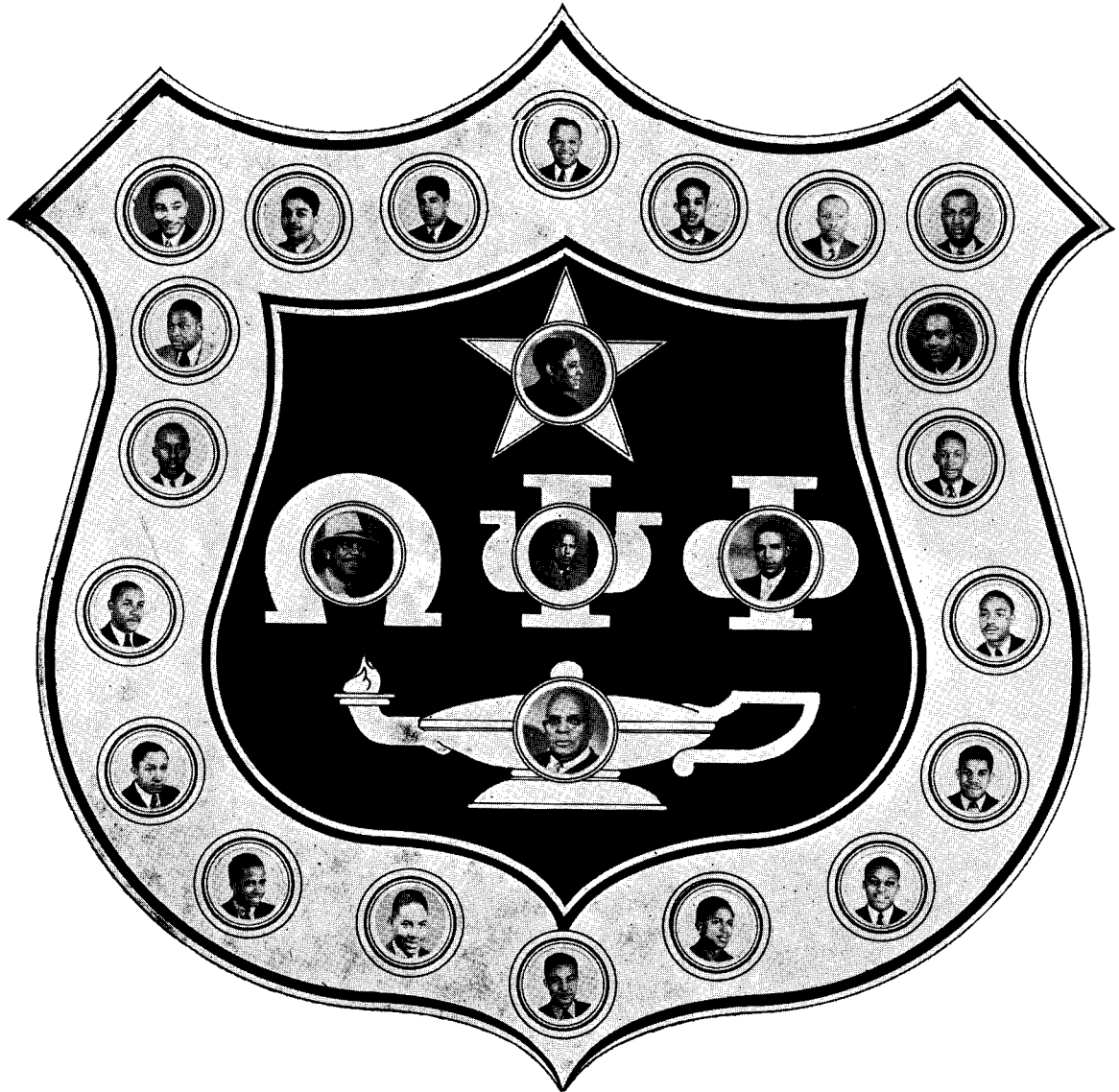
## OFFICERS

Wilhelmina Pratt, President; Belle Doughty, Vice-President; Ann Hamilton, Secretary; Allene Collins, Assistant Treasurer; Lessie Braden, Treasurer; Wilma Hennings, Chaplain; Minnie Simms, Reporter.

## MEMBERS

Edith Bailey, Davella Battle, Edna Bradley, Lessie Braden, Allene Collins, Bennie Crawford, Belle Doughty, Martha Fowler, Ann Hamilton, Alma Hennings, Carrie Hightower, Bobby Mitchell, Jessica Officer, Wilhelmina Pratt, Maggie White, Minnie Simms, Robbie Rogers.

# Omega Psi Phi



## OFFICERS OF OMEGA PSI PHI

Clarence Carter, *Basileus*  
 Samuel Houston, *Vice Basileus*  
 Halbert Dockins, *Keeper of Records and Seal*  
 Marion Smithson, *Asst. Keeper of Records and Seal*  
 Leonard Thompson, *Keeper of Finance*

James Mullin, *Neophyte Commandant*  
 Herbert Holmes, *Parliamentarian*  
 Carlton Sparks, *Chaplain*  
 Indianola Hayes, *Chapter Editor*  
 Knox Tucker, *Keeper of Peace*

## ROSTER

Clarence Carter, Samuel Houston, Herbert Holmes, Indianola Hayes, James Mullin, Louis Wilson, Daniel Lee, Marion Smithson, James McMillan, Lovell Jones, James Swayze, William Werthan, William McKissack, John Williams, Charles Coleman, Kennard Jones, Knox Tucker, Carlton Sparks, Leonard Thompson, Halbert Dockins, President W. J. Hale, Mr. Forrest Strange, Professor J. C. James, Professor W. S. Davis, Mr. R. E. Clay.



# Omega Psi Phi

Rho Psi Chapter of Omega Psi Phi Fraternity enjoyed one of its most successful years during 1941-42. Seven new brothers were welcomed into the fraternity during the winter quarter and three more in the spring quarter.

It is very necessary that we mention certain brothers of our great fraternity who are now in Uncle Sam's Armed Forces: Brother Kennard Jones, who was president of the Senior Class of '42, along with Frank Thomas, Mose Davie, David Ulmer, James Woods, Theodore Lawson, Ned Nelley, Donald Officer, and others are now spreading the spirit of Omega in Army Camps throughout the country.

Special homage is paid to a true Brother and Adviser of Rho Psi Chapter, namely, Brother Josef C. James, who is now serving in the United States Army. Brother James is truly an asset to Rho Psi Chapter, and meets all requirements of a true Omega man.

Rho Psi Chapter regrets that it will lose its brothers via graduation in June. Those brothers graduating are: Brothers Leonard Thompson, Indianola Hayes, Halbert Dockins, Herbert Holmes, Louis Wilson, and Lovell Jones.

Rho Psi Chapter and the student body of A. and I. State College are glad to hear that Brother Walter Pinkston has regained his eyesight. Brother Pinkston was for three years one of the brightest students on A. and I. campus. Some of his campus achievements for his three years at State were: recipient of \$50 Smith French Award; Writer and Director of five French Skits; Captain of Cheer Leaders; Organist; Pianist; honor student; President of Junior Class and Basileus of Rho Psi Chapter of Omega Psi Phi Fraternity.

Brothers Herbert Holmes and Calvin Gibson are planning to enter Meharry Medical College in the Fall of 1942.

The next annual Conclave will be held in Washington, D.C., during the holidays.

Brother Granville Rivers, a graduate of Rho Psi, was elected Grand Chaplain at the past conclave held in Indianapolis.



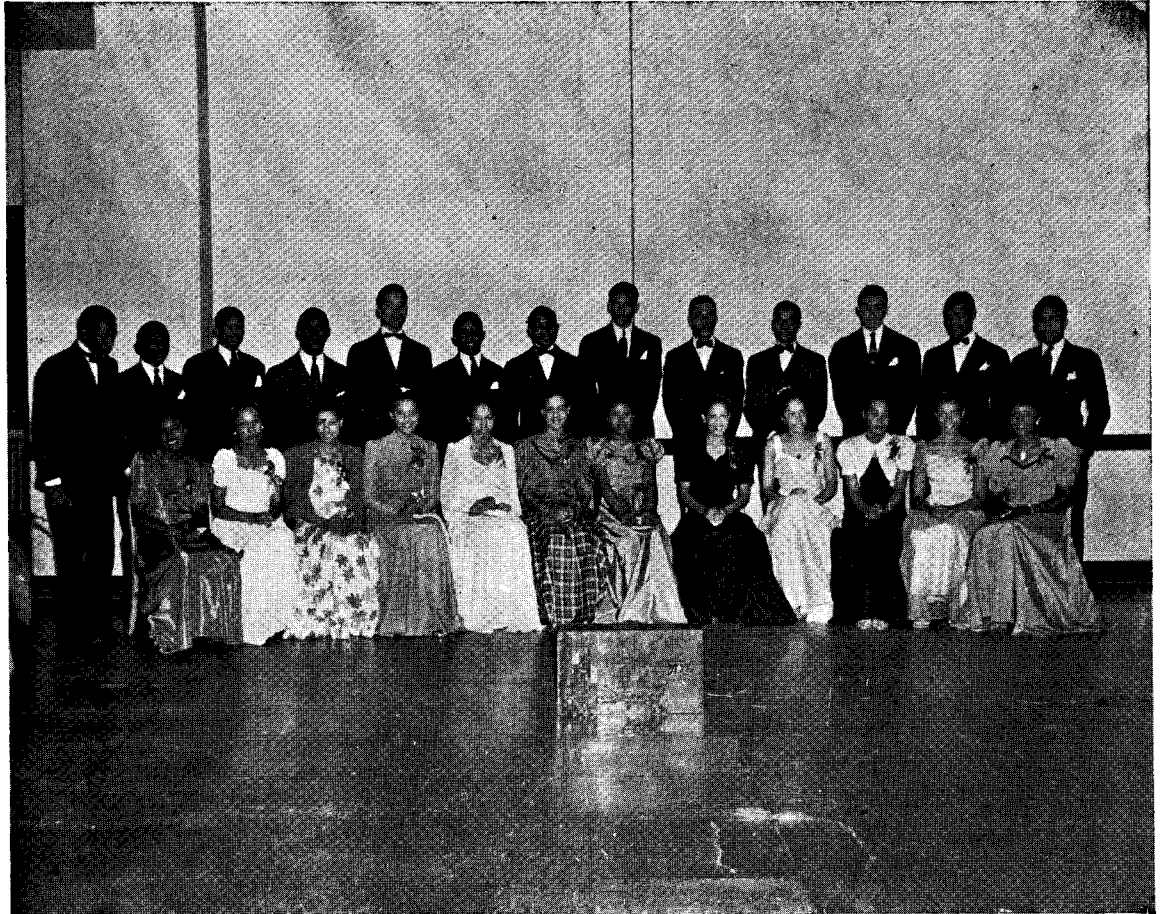
#### OFFICERS

Joseph W. Rucker—President; Sophomore; Gallatin, Tennessee; a major in Science; member of Lambda Eta Sigma Honor Society; History Study Club; Ayeni Staff.  
 Junius Stevenson—Vice President; Junior; Pine Bluff, Arkansas; a major in Science; member of History Study Club; College Orchestra.  
 John R. Rucker—Secretary; Sophomore; Gallatin, Tennessee; major in Science; member of History Study Club.  
 Solomon McNeil—Assistant Secretary; Freshman; Durham, North Carolina; a major in English, member of History Study Club.  
 John T. Childs—Program Chairman; Junior; Richmond, Virginia; a major in Health and Physical Education.  
 Enoch T. Williams—Treasurer; Freshman; Memphis, Tennessee; major in English; H. S. Club.

#### ROSTER OF MEMBERS

Curley Monroe—Sophomore; Memphis, Tennessee; a major in Health and Physical Education.  
 Benjamin Lewis—Sophomore; Homer, Louisiana; a major in History and Social Studies; member of Tennessee State Players Guild and History Study Club.  
 George Harper—Freshman; Middlesville, Georgia; a major in Industrial Education.  
 Thomas Mayfield—Sophomore; Fort Worth, Texas; a major in music.  
 Alphas Williams—Freshman; Birmingham, Alabama; a major in History and Social Studies.  
 Sherman Miller—Freshman; Louisville, Mississippi; a major in History and Social Science.  
 William C. Vaughn—Sophomore; Gallatin, Tennessee; a major in Science; member Chemical Club and History Study Club.  
 Albert Cook—Freshman; Shreveport, Louisiana; a science major; member of History Study Club.  
 Walter Donaldson—Freshman; Ocala, Florida; major in History and Social Studies.

# Lampados Club



The chief endeavor of the Lampados Club of Rho Psi Chapter of Omega Psi Phi Fraternity is the promotion of true manhood which is essential to all phases of life.

We have tried diligently to exemplify the four Cardinal Principles set forth by the Fraternity, namely, Manhood, Scholarship, Uplift, and Perseverance, and with all sincereness, we are proud to be brothers to such a great national organization.

The annual Sunday School Program, The Dinner Dansant, and the Birthday Celebration for our beloved Mrs. J. E. Elliott, were the major activities of the year.

# Nu Upsilon Alpha

## TENNESSEE STATE COLLEGE NYA RESIDENT PROJECT

Approximately 60 young men and women between the ages of 16 and 24 are engaged in useful training through the only college resident project in Tennessee conducted by the National Youth Administration and operating at Tennessee A. and I. State College, Nashville, Tennessee.

The work program including household arts, sewing, woodwork, auto mechanics, electricity, plumbing, Carpentry, steam fitting, clerical work and other trades, has for its purpose the preparing of youth to fit into some gainful occupation in at least a two year period or less.

Courses which give related training to the work program including Hygiene, First Aid, Community Health, Designing and Music serve to enrich the youth's training. Miss Gwendolyn C. Hale, Health and Physical Education; Mrs. R. B. J. Campbell, Practical Home Economy and Government; and Mr. Charles Hunter, Home Making Art and Mechanical Drawing.

Mrs. C. M. Denney and Mr. Forrest Strange, project supervisors, along with directors and instructors are putting forth an effort through extra-curricular activities to give the trainee the same type of all-round development that could be secured through regular academic training. Nu Upsilon Alpha, a NYA organization, was created in the group in order to stimulate and further individual interest, achievement, scholarship and workmanship. Officers elected were: President, Milton P. Crook, Chattanooga; Vice-President, Thomas A. McDowell, Chattanooga; Secretary, Marguerite Davie, Clarksville; Assistant Secretary, Florine Butler, Pulaski; Treasurer, Charles Hickman, Chattanooga; and Chaplain, Rufus Taliaferro, Chattanooga.

# Nu Upsilon Alpha



## TENNESSEE STATE COLLEGE NYA RESIDENT PROJECT

Front row left to right: Mattie E. Johnson, Fannie N. Council, Garnetta Peacher, Julia C. Fultz, Margurite Davie, Betty Lou Green, Ernestine Smith, Tennie Lee Sain, Mr. R. E. Clay, Mrs. C. M. Denney, Mr. W. J. Hale, Jr.

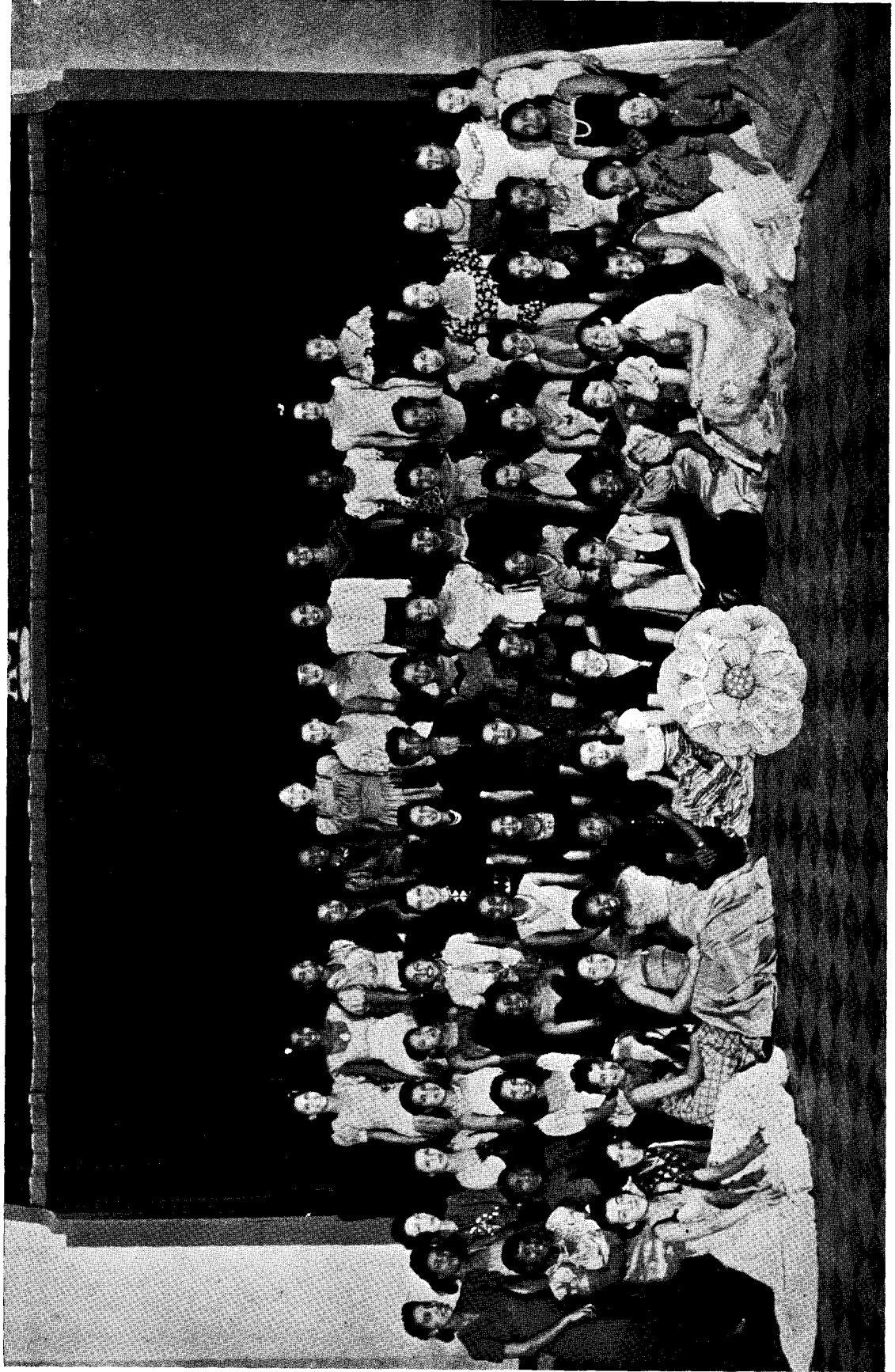
Second row: Loretta Robertson, Bertha Johnson, Willie Mae Ward, Lora M. Long, Velma J. Mitchell, Ella M. Moore, Thelma Payne, Daisy A. Pollard, Miss Gwendolyn Hale, Lewis McGill, Mr. Forrest Strange.

Third row: Jean E. Gilliland, Helen Cureton, Odessa M. Hay, Bernice Gordon, Clara L. Poin-dexter, Henrietta Kelly, Millie White, Katherine Hardy, Florine Butler, Laura Locke, Frances Thomas, Sadie Moulden, William Woods.

Fourth row: Dan Hughes, Garland Johnson, Lindsay Collier, Ambrose Childs, DeLeon Shaw, John Tipton, Alphonso Coofer, Chester Ghant, Charles Hickman, Norman Lee, Rufus Taliaferro, London McGill, Robert Buckner and Willie Roy McClellan.



# Alba Rosa Club



# Alba Rosa Club

The Alba Rosa Club is one of the oldest organizations for women on the Tennessee A. and I. State College campus, having been founded on February 20, 1920. The purpose is to raise the scholarship on the campus and to beautify the campus. The club motto is, "Row, Not Drift." The colors are pea green and pink. The symbol is the white rose which denotes purity in womanhood.

## OFFICERS

Lorene A. Lewis, President; Effie N. Finley, Vice-President; Grace L. Spearman, Secretary; Maxine Gaines, Assistant Secretary; Margaret Turner, Treasurer.

## ROSTER OF MEMBERS

Matty Sue Adams, Vera Allen, Lillian Armstrong, Mattie Babbs, Margaret Baine, Myrtle Banks, Martha Barbee, Lottie Blair, Annie Blanks, Gloria Boyd, Carnell Bush, Viola Candler, Clarise Chandler, Virginia Cobb, Hattie Crutchfield, Helen Cureton, Guernia Dae, Ethel Dav's, Ruth Durham, Nellie Eppse, Theola Fisher, Mary Fontnette, Inez Fullen, Dorothy Greer, Majorie Hart, Madge Hayes, Margaret Hendricks, Cleopatra Hendrix, Virginia Hickerson, Charleta Hicks, Desmond House, Theo Howard, Malvine Hughes, Virgil Hudley, Jimmie Hunt, Dresden Jackson, Zephree Jackson, Sadie Kaiser, Tempie Lay, Anna Leslie, Mary Livingston, Georgia Lyles, Margaret Marsh, Charity Martin, Helen Mathis, Purlletta McVey, Ruby Miller, Ernestine Mitchell, Gloria Moore, Martha Parker, Juanita Parker, Fannie Paschal, Alma Pendleton, Anasteen Piersawl, Lillian M. Rhodes, Emma Richards, Margeurite Roan, Camille Robinson, Kathryn Robinson, Lucile Robinson, Vivian Robinson, Helen Seeney, Delores Scott, Johnnie Sharp, Gladys Shockley, Havana Simon, Myrtis Simpson, Italia Slater, Margaret Spearman, Charlesetta Spurlock, Willie I. Stevenson, Alverine Strong, Joanna Strong, Mary F. Suggs, Minnie Thomas, Clintonia Thompson, Rena Thorbourne, Ehrai Walker, Louis Walker, Octavia Ware, Luster Washington, Rosa Watson, Elgertha Williams, Josephine Williams, Marie Williams, Louise Willis, Addie Wilson, Rita Wilson, Eithelia Woods.

Mrs. Rachel Patillo, Adviser.

Miss Mildred E. Clift, Co-Adviser.

Miss Zelma L. Redmond, Associate Member.

Mrs. Harriette Davis Pleasant, Associate Member.



#### SENIORS OF ELEMENTARY EDUCATION DEPARTMENT

The Elementary Education Club grew out of the union of the Rural Education and Rural Teachers clubs. The union of the two groups became effective in October, 1931 under the name "The Elementary Education Club," for the purpose of promoting scholarship on the campus, developing a greater degree of cooperation between rural and urban teachers, and to formulate mutual contacts between all members of the field of Elementary Education throughout the state.

MOTTO: *"Lifting as we Climb"*

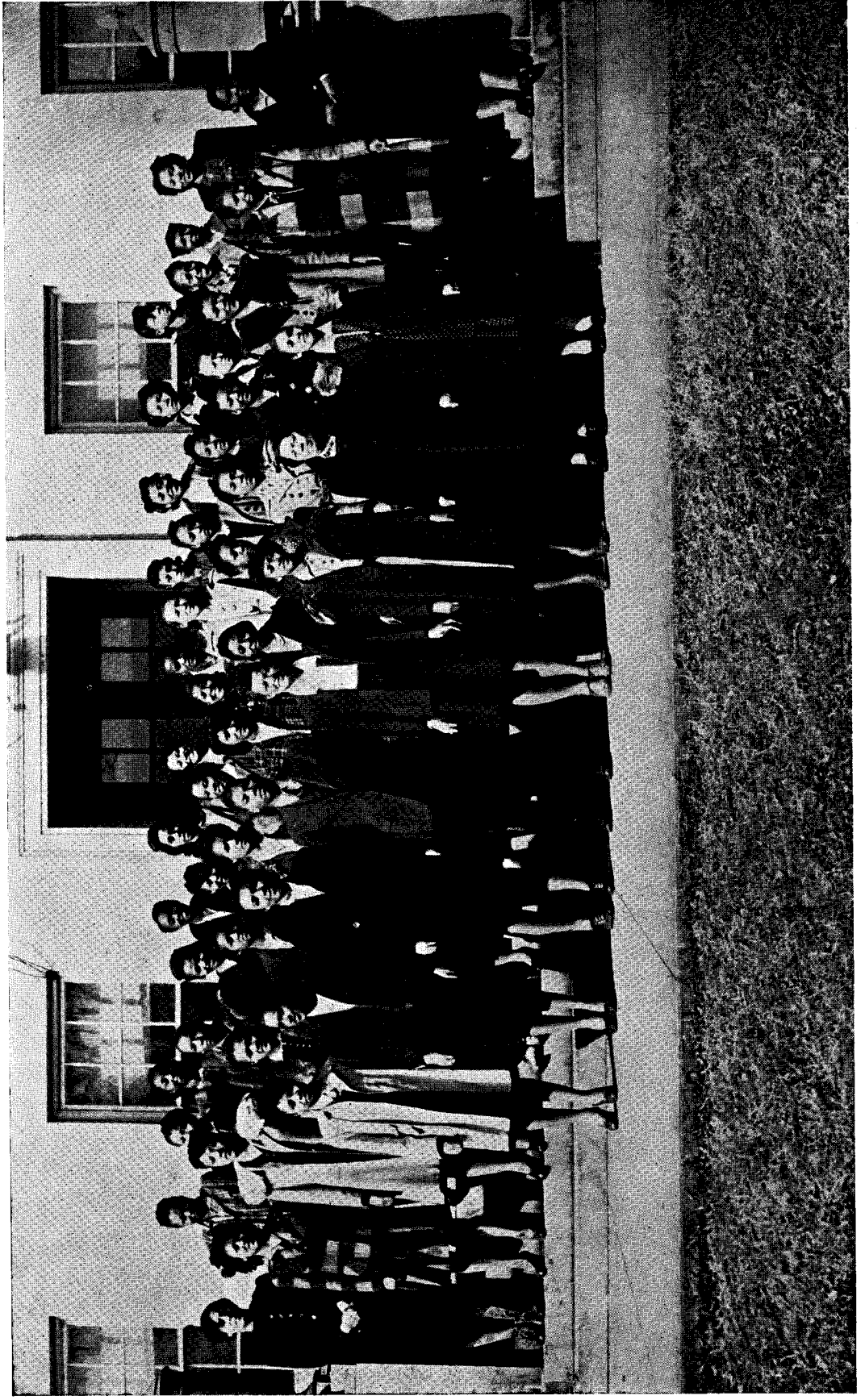
COLORS: *Old Rose and Gray*

FLOWER: *Carnation*

#### OFFICERS

Helen A. Piersawl, President; Wyoming, Ohio.  
 Mrs. Naomi Wilson, Vice-President; Washingtonville, New, York.  
 Tulipe E. Claiborne, Secretary; Johnson City, Tennessee.  
 Margaret Marsh, Assistant Secretary; Dixon, Tennessee.  
 Robert Blackwell, Treasurer; Nashville, Tennessee.  
 Ella B. Polk, Reporter; Dixon, Tennessee.  
 Grace J. Moore, Historian; Evansville, Indiana.  
 Mrs. Mabel Saunders, Pianist; Cleveland, Ohio.  
 Mrs. F. A. Sanders, Adviser.

## Elementary Education Majors



# Delta Tau Iota



Delta Tau Iota Social Club, the oldest women's organization on the campus, was founded in 1920. It has as its purpose, the promotion of healthy, happy womanhood and the establishment of high ideals and service. Delta Tau Iota has contributed much to the social and cultural development of the college. One of the most noteworthy contributions is the fish pond and fountain, which was dedicated June 1, 1930.

*Motto: "Not Evening but Dawn."*

*Colors: Silver and Rose*

*Flower: Marechal Neil Rose*



# English 202



## ENGLISH LITERATURE CLUB

Seeking higher ideals in life is this conscientious group of students in English Literature under the inspired teaching of Miss Zelma Redmond now studying the appreciation of literature by correlating it with music. At this time they are listening to sonnet number 43 by Elizabeth Browning, music by Wayne King and reading by—McCormick.

Alabama—Dorothy Abron, Frances Fields, Jimmie Hunt.

Georgia—Edythe Green.

Florida—Willie Lee Joyner, Lillie Bell Redmond.

Illinois—Gladys M. Holt, Lucille Jones, Gloria Moore.

Indiana—Charlotte Miller.

Iowa—Ethel Lee Davis.

Kentucky—Anna Kate Edington, Rabun McCormick, Mattie Adams.

Michigan—F. D. Robinson, Margaret Turner.

New York—Naomi S. Wilson.

Ohio—Luster Washington.

Tennessee—Willie Cowan, Finley Jordan, John Rucker, Joseph Tucker, Atha Westbrook, Walter West, Josephine Williams, Henry Douglas, Marie Anderson, Dorothy Bond, Preston Blackman, John Clay, Bessie J. Brawford, America Delk, Ruth Dixon, Eddie Gunn, Sarah Hurt, Georgia Anna Hayes, Ruth Ellen Jones, Virginia Monroe, Mary Ellen Mayberry, Camille Robinson, Jane Rose, Mamie Sims, Minnie E. Thomas, Geraldine Woodward, Mattie Louise Webb.

The following are favorite authors of the students—Robert Browning, Alfred Tennyson, John Milton, William Wordsworth, Samuel Coleridge, Geoffrey Chaucer and Francis Bacon.

# History Study Club



President—Ulysses Wilhoite, Senior; Tullahoma.

Vice-President—Luther Webb, Senior; Meridian, Mississippi.

Secretary—Theo Edith Howard, Senior; Mobile, Alabama.

Assistant Secretary.—Gladys M. Holt, Sophomore, Rockford, Illinois.

Treasurer—James Perkins, Senior; Nashville.

History Queen,—Vera Allen, Junior; Birmingham, Alabama.

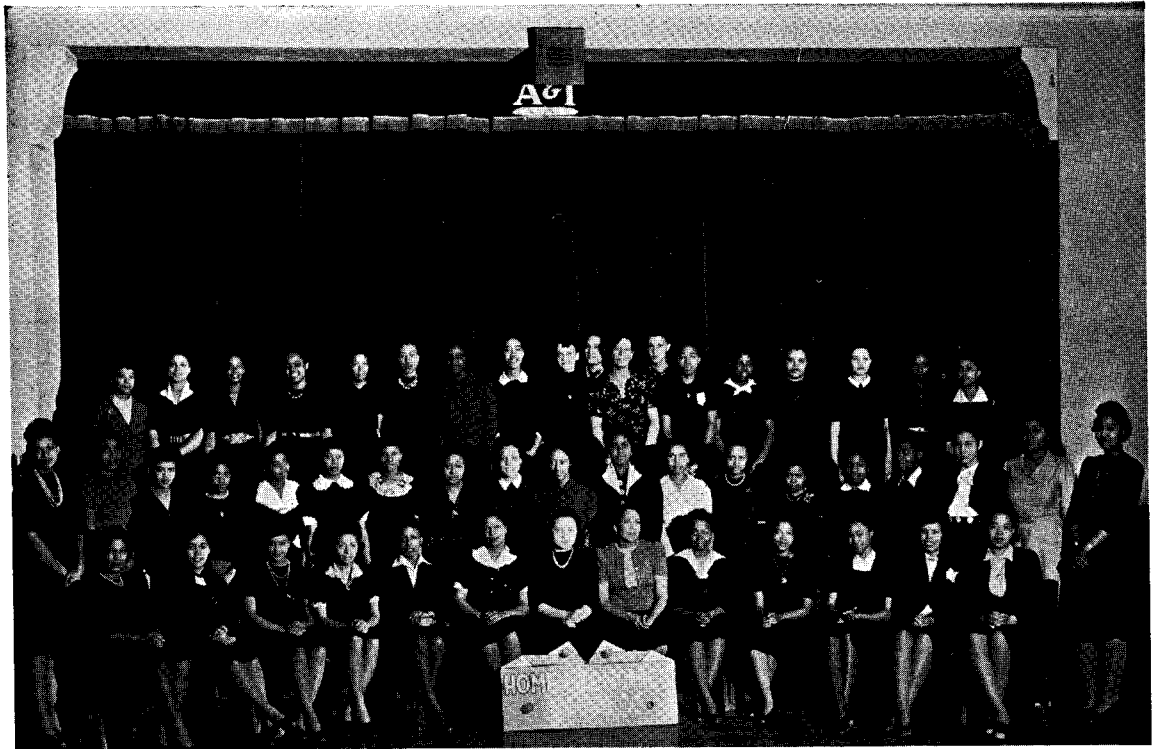
Attendant—Pauline Wier, Senior; Frankfort, Indiana

Attendant—Rena Thorbone, Junior; Panama City, Panama.

Adviser—Professor M. R. Eppse.

There are four hundred and ten members of the club.

# Home Economics Club



The main objective of the Home Economics Club is to help students develop and become more efficient in foods, clothing, home beautification and management. This objective is approached through a correlation of personal needs and problems with theory and practice in combination with personality development.

## ADVISERS

Mrs. C. B. McKinney, Miss J. Crockett, Mrs. Ruth Griggs.

## OFFICERS

Verta Ree Mosley, President; Myrtle L. Banks, Vice-President; Annie L. Smith, Secretary; Laurine McClure, Assistant Secretary; Elizabeth Brooks, Treasurer; Airedell Davis, Chaplain.  
Members of the Graduating Class in Home Economics of the year 1942.

Myrtle L. Banks, Cornelia Bond, Elizabeth Brooks, Willie A. Calhoun, Abigail Clarke, Katheryn Coleman, Airedell Davis, Willa Easterly, Bertha C. Epps, Elizabeth Grinstead, Marjorie Hart, Earnestine House, Dresden Jackson, Zephree Jackson, Zola Johnson, Sarah Love, Geneva Madison, Laurine McClure, Ruby S. Miller, Marietta Moore, Addie E. Morris, Verta R. Mosley, Marie Nichols, Pallen Nubia, Malvina Shockley, Annie L. Smith, Gladys M. Stuart, Fannie B. Tyler.



## INTERNATIONAL RELATIONS CLUB

The Tennessee A. and I. State College chapter of the International Relations Club, was granted a charter in October, 1939, with Miss Gwendolyn Claire Hale as the first president. This is a club under the auspices of the Carnegie Endowment for National Peace and has for its purpose the idea of working for International peace and goodwill throughout the world.

The activities for the year include regular monthly meetings, cooperation in the International Relations Sunday School, and an International Relations vesper, presenting representatives from foreign countries, including Cuba, Brazil, Africa, and Asia.

The officers are:

Charles M. Holley, President, Gary, West Virginia.

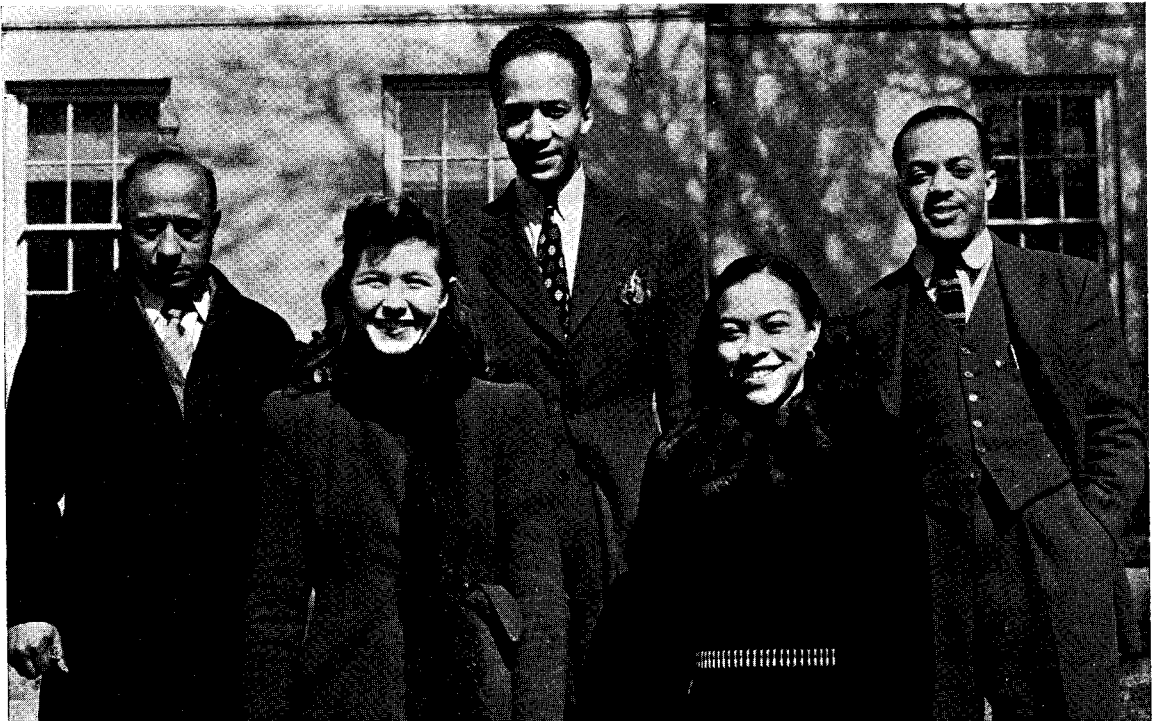
Kennard C. Jones, Vice-President; Nashville, Tennessee.

Chequeta Dunscomb, Secretary; Evansville, Indiana.

Vera Allen, Assistant Secretary; Birmingham, Alabama.

James F. Perkins, Treasurer; Nashville, Tennessee.

Professor Merle R. Eppse, Adviser.



# Library Science



The Library Science Department serves a two-fold purpose in the college curriculum. First, a general course emphasizing the efficient use of books and libraries may be taken by any student in the college and in either quarter as it is repeated. Second, twenty-four quarter hours or a minor is offered for the training of teacher-librarians. At least two courses are given each quarter, one on the junior level and one on the senior level, so that a student may begin a minor in his first quarter of his junior year and take one course each quarter thereafter until he completes the requirements at the end of his senior year. Mrs. M. M. Brown, Head Librarian and Miss Modestine Young, Circulation Librarian, assist in the supervision of the practice work.

The following students will complete a minor in the field during the Spring and Summer quarters 1942:

Willie Mae Bass, Frances Berry, Mildred Cater, Tulipe Claiborne, Chequeta Dunscomb, Margurite Goodall, Mary Griffin, Blanche Holt, Virginia Mae Mason, Grace Moore, Bertha Morrow, Ethel Mott, Mildred Powell, Emma Richards, Margaret Sherrill, Helen Sledge, Modestine Smith, Grace Lucile Spearman, Mary Frances Suggs.

Lois H. Daniel, Instructor; B.S., Tennessee State College; B.S. in Library Science, Hampton Institute.



# Mathematics Club



Reading from left to right: first row, Mary Alice Scott, Willie Mina Woods, Birdie Olanda Russell, Alberta Jeanne Campbell.

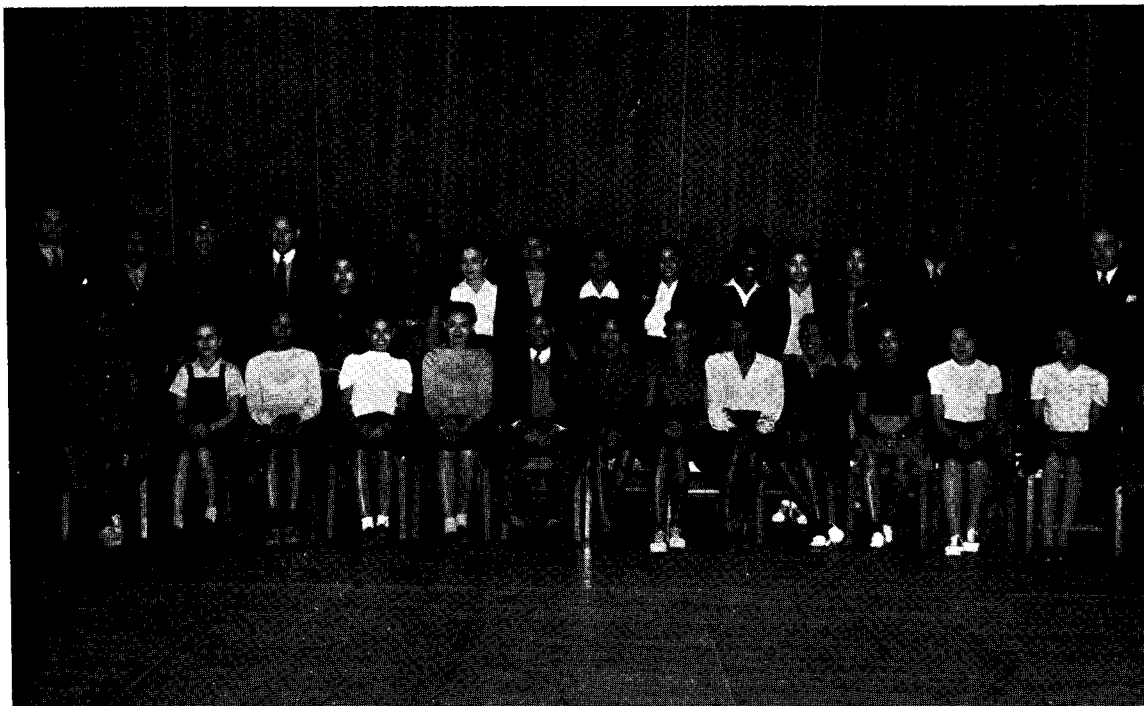
Second row: Marsh S. Houston, Martha Rita Moore, Mary Alice Hall, Christine Hawkins, Joseph McClure.

Third row: Prof Alger V. Boswell, Miss Eunice Matthew, Prof. Theodore Goulo. Miss Georgia Rosetta Buckner and William Blevins were not present when the picture was taken.

## OFFICERS

President, Alberta J. Campbell; Vice-President, Joseph McClure; Secretary, Martha R. Moore; Assistant Secretary, Christine Hawkins; Treasurer, Mary Alice Hall; Adviser, Prof. A. V. Boswell.

# PHYSICAL EDUCATION CLUB



In these times, when war is being fought all around us, we should become more health and physical education minded.

The aims of physical education at A. and I. State College:

1. To give in a suitable environment, to every group of individuals, vigorous muscular work of a type that is inherently interesting to that group.
2. To select types of work which also may be used to develop within the individual a disposition to strive for high social ideas.
3. To use at opportune times types of work that develop within the individual the power to quick aid, accurate thinking and doing.
4. To give preference to such types of work that lead to the acquiring of skill that is useful for recreation ends.
5. To have health instructions based upon scientific material progressively arranged throughout the grades and upper schools, and directed toward personal accomplishment and social ideas. Safety should be included in this instruction.
6. To have a physical education program for all individuals everyday, using activities that are educationally desirable, progressively graded and adapted to meet individual group needs.
7. Opportunities for the development of skills and interests in recreational hobbies that may range the entire curriculum, but centering most often in music; literature and drama; fine, plastic, and industrial arts; physical education; and various club activities of the school.

The physical education club strives to promote sportmanship rather than competition. In sponsoring this program the following sports are featured; Football, Basketball, Tennis, Ping-Pong, Volleyball, Softball, Badminton, Archery and Swimming.

## OFFICERS

Roland Jones, President; Dorothy M. Greer, Vice-President; Secretary, Dorothy V. Thompson; Assistant Secretary, Robbie C. Rogers; Treasurer, H. Edith Dennard; Reporter, William D. Cox; Adviser, Prof. Floyd C. Mourning; Assistant Adviser, Prof. Thomas H. Hughes.

## MEMBERS

Althea Ballard, Prestine Blackman, Ambrizella Brewer, Jerry Bundy, Viola Candler, Belle Doughty, Edwa Fayard, Mattie Fields, Thomas Glymph, John Hayden, Willie Kidd, Modestine Love, Ruth Lowe, Charity Martin, Marion McCoy, Pearl McVey, Curley Monroe, Maxine Moulden, Myrtle Simpson, Gladys Starks, Clintonia Thompson, Frances Toalston, Carrie Wiley, Mary Wilson.



## ADOLESCENT PSYCHOLOGY CLASS

One-hundred sophomores, juniors and seniors, pursuing the course in Adolescent Psychology, selected for their class procedure, the laboratory method which was made possible by the splendid cooperation and participation of the Nashville Junior and Senior High Schools. On Saturdays, the adolescents visited the classes in Adolescent Psychology and rendered special programs, answered questions and presented their special abilities and talents.

Adolescents who are standing in the first row are displaying: 1. Industrial work by the model aeroplanes, 2. Home Economics by dresses and knitting, 3. Literary attainment by their prize-winning scrap-books, 4. Athletics by their lettered uniforms and bicycles, 5. Organization—Boy Scouts.

Schools and students representing these activities are: Palmer Walker, Jr., Ford Greene Elementary School; Catherine Murry, Elizabeth Allison, Hazel Box, Margaret Freeman, and Catherine Finley, Pearl High School; Nina Nesbitt, St. Vincent De Paul Catholic School; Angela Ross, Alvin Webster, Helen Dotson, Mary Willie Odessa Groves, Hayward Harrison, Felix Rucker, Phillip Hames Williams, James Stockard, Joe Pillow, Lionel Hall, Beutley Marshall, Luther Waters, Delores Goode, Mildred Collier, Seth Sharpe, William Watson, and George Moorman, Washington Junior High School; Mildred Bailey, Quennie Wright, Elloriz King, Darden Chrisman, Ben Winters, Lorena McCall, Calvin Summers, Charles Arnold, John Turner, Jr., Martha Robinson, Mary Jones, and Margaret Peaks, all of Haynes High School.

PROF. ZELMA REDMOND, Instructor

# Quiet Hour



The idea of the present regular "Quiet Hour," on our campus came as a result of a Religious Emphasis Week that was held in the "Little Theater," in 1936. Slips of paper were passed to those present at the last meeting asking what could be done to continue the idea of quiet, calm worship throughout the year instead of one week a year. The suggestions came from many students present to have some form of worship, inviting speakers, group participation, etc. Hence the "Quiet Hour," was born through the desires and urges of students expressed on those bits of paper.

It has grown from a very few regular attenders for the first few years to more than one hundred regular worshippers each Wednesday evening from 6:00 to 6:30 p.m.

This period serves not only as an outlet, but also an intake of that which is high, holy, ennobling, satisfying.

We are grateful to President Hale who has ordered that all other meetings must be cancelled while "Quiet Hour" is in session.

"Quiet Hour" has no officers, no formal organization, its leadership rests with volunteer leadership that comes weekly from the worshippers.

L. B. Watson, Adviser.



# Sunday School

The Sunday School under the faculty direction of Mr. R. E. Clay and Dr. G. W. Gore, Jr., is only one of the many opportunities afforded the student to enrich life through religion.

Monthly church, weekly prayer, Sunday vesper, and the Sunday school are regular phases of the religious program of the college.

Although attendance is not compulsory the Sunday School attracts one of the largest audiences of any assembly on the campus.

All organizations, sororities, social and departmental clubs cooperate with the Sunday School by sponsoring various types of programs throughout the year.

The Sunday School receives the hearty support and cooperation of President Hale who believes that the inspiration and stimulation thus received will be of inestimable value to students in an effort to evolve satisfying philosophies of life in a changing world.



# SUNDAY SCHOOL



The Cabinet

The Sunday School Cabinet is composed of the officers of the Sunday School and faculty members who serve in the capacity of class instructors.

## OFFICERS

Senior Class—Mrs. Phyllis Falls Armour, president; Miss Dorothy Greer, vice-president; Miss Ruby Miller, secretary; Miss Helen Seeney, assistant secretary.

Junior Class—Mr. Clarence Carter, president; Mr. Cecil Partee, vice-president; Miss Irene Baker, secretary, Miss Mazarene Terrell, assistant secretary.

Sophomore Class—Mr. Clarence O'Neal, president; Mr. Tranny Arnold, vice-president; Miss Elaine Sherrill, secretary; Miss Alma Pendleton, assistant secretary.

Freshman Class—Mr. John Tipton, president; Mr. Charles Hickman, vice-president; Miss Marguerite Davie, secretary; Miss Lillian M. Rhodes, assistant secretary.

Mr. Gus J. Rutledge, Superintendent.

Mr. Clarence Carter, Assistant Superintendent.

Miss Myrtle Banks, Secretary.

Miss Mary F. Suggs, Assistant Secretary.

Miss Inez O. McDowell, Second Assistant Secretary

Mr. William Mayes, Treasurer.

Mr. Robert L. Bailey, Assistant Treasurer.

Mr. R. E. Clay, Faculty Adviser.

Dr. G. W. Gore, Jr., Faculty Adviser.

## FACULTY INSTRUCTORS

Senior Class—Mrs. A. Dunn-Jones, Miss Laura Averitte.

Junior Class—Mrs. L. B. Watson, Mr. W. J. Hale, Jr

Sophomore Class—Miss Lois Daniel, Miss Gwendolyn Hale.

Freshman Class—Mr. A. V. Boswell, Miss Frances E. Thompson.

# THE STUDENT CHRISTIAN ASSOCIATION



Formerly the Young Women's Christian Association and Young Men's Christian Association have functioned separately on our campus. Two years ago their efforts were combined into an organization known, in our college as well as the leading colleges of Nashville and many of the colleges of the country, as the Student Christian Association.

The Student Christian Association is a fellowship of men and women, working together to re-establish a spiritual basis for hope and courage, that through their united efforts a saner comradeship may be developed.

The work of the Student Christian Association functions through the following committees: Fellowship, International Relations, Worship, Recreation, Hobby, Social, Program, Membership and Charm School. The local organization has functioned through most of these committees.

This year our Student Christian Association has had visits from Local, National and International officers.

This year the Fellowship, Interracial and Social programs have brought most of the colleges of Nashville together in the form of programs and group participation on Fisk, Scarritt and our own college campus.

In the above picture, front row, left to right are: Prof. Thomas E. Poag, Chairman Social Committee; Mary F. Suggs, Student Membership Committee; Samuel Curley, Student Social Committee; Mrs. Lena B. Watson, Adviser; Clarence Carter, President; Marie Grant, Vice President; Halbert Dockins, Recording Secretary; and John Hayden.

Second row, left to right are: Willie Stevenson, Curley Monroe, Student Recreation Committee; Elaine Sherrill, Student Social Committee; Jesse Dupee, Junior Class Representative; Phyllis F. Armour, Corresponding Secretary.

Third row, left to right are: Mazerene Terrell, Student Fellowship Committee; Clarence O'Neal, Sophomore Class Representative; Leonard Thompson, Student Worship Committee; Leo Branton, Jr., Student International Relations Committee.

Fourth row, left to right are: Frank Ballard, R. B. J. Campbelle, Jr., John Buford, Freshman Class Representative; Grace Spearman, Pianist; Marie Curlin, Guy Phillips, Norman Walton.

# Debating Team



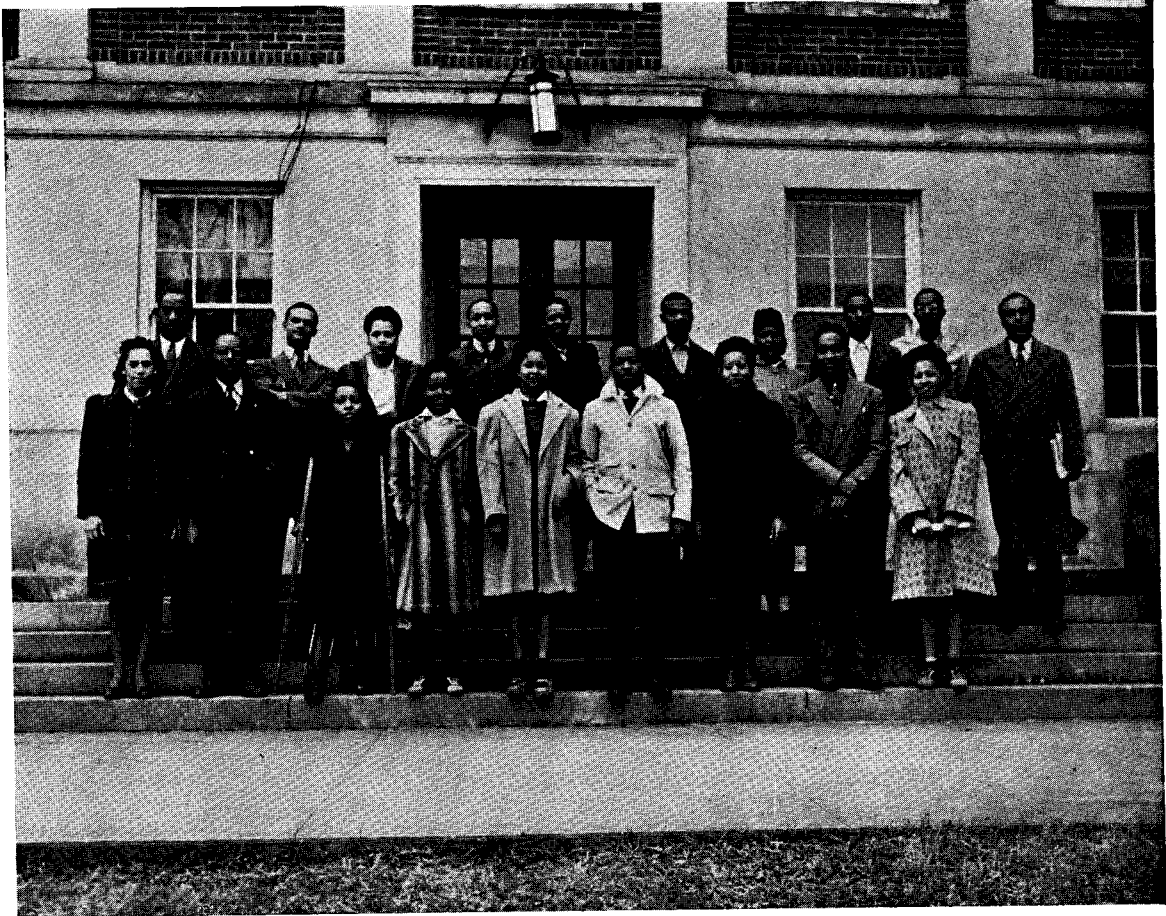
## THE FORENSIC SOCIETY

The Forensic Society of Tennessee State College was organized on A and I. State College Campus, December 13, 1938 by its present sponsor—Professor John C. Ballard. The prime purpose of the organization is to train students to think logically and to speak extemporaneously on contemporary problems.

The Annual Freshman-Sophomore Debate was one of the outstanding events of the 1941-42 school year. The Freshman team was composed of Miss Cleopatra Hendrix of Waukeegan, Illinois, and Miss Gladys Crocker of Gary, Indiana, while on the Sophomore team appeared Mr. Lawrence McVoy of Pensacola, Florida, and Mr. William Russell of Russellville, Kentucky. The Sopho-

*(Continued on Next Page)*

# Forensic Society

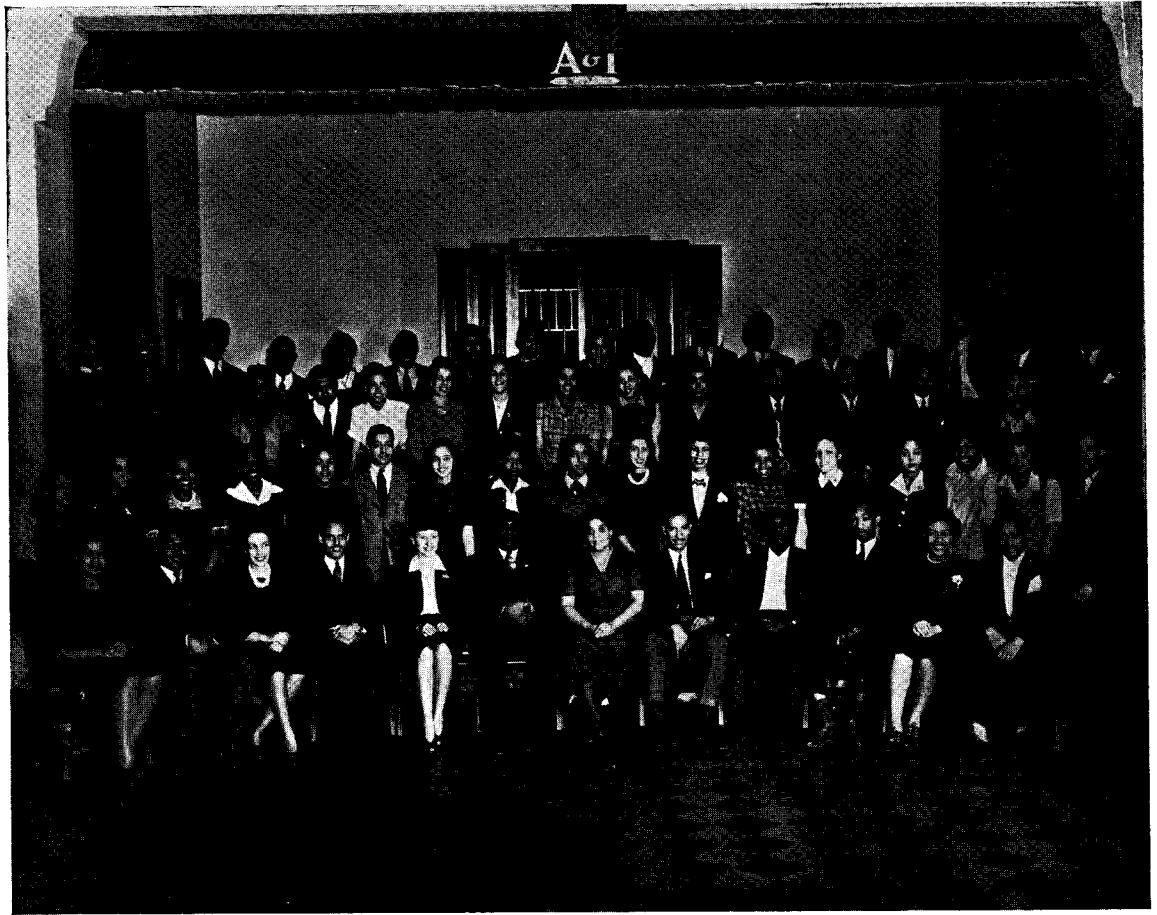


## THE FORENSIC SOCIETY (Continued)

mores tipped the scales for the judges' decision and were presented a beautiful silver-loving cup. This cup will remain at the college as a permanent trophy and will be awarded each year to the winning team in the Freshman-Sophomore contest.

The Society presented its annual vesper program on March 22, which took the form of a symposium centering about the topic: WHAT THE WAR MEANS TO US. The topic was discussed by prominent students in the institution—Misses Clarice Chambliss, Rena Thorbourne and Frances Curry and Messrs. Jessie Miller, Harry Scott, and Carlton A. Sparks. Miss Myrtle Banks, president of the Forensic Society, served as presiding officer. During the remainder of the school year, similar programs sponsored by the Society and seniors in the organization who had made contributions to the culture of the campus were presented the society's coveted key. The awarding of keys to graduating seniors is one of the annual features of the Tennessee State College Forensic Society.

# Players Guild



## TENNESSEE STATE PLAYERS GUILD

The Little Theatre Movement is promoted through the Department of Speech. The Tennessee State Players Guild is the dramatic workshop for all students who desire to participate in dramatic and speech activities. The purposes of the organization are: first, to stimulate a greater interest in the drama; second, to develop Negro folk drama; third, to develop Negro actors, playwrights, scenic designers and directors; and fourth, to present anything from the Greek drama to the plays of Clifford Odets.

### EXECUTIVE STAFF

President, William Mayes; Vice-President, Leonard D. Thompson; Secretary, Helen Seeney; Assistant Secretary, Halbert E. Dockins; Treasurer, Anne Galloway; Chaplain, Robert Twiggs; Business Manager, R. B. J. Campbelle, Jr.; Publicity Manager, Leo Branton.

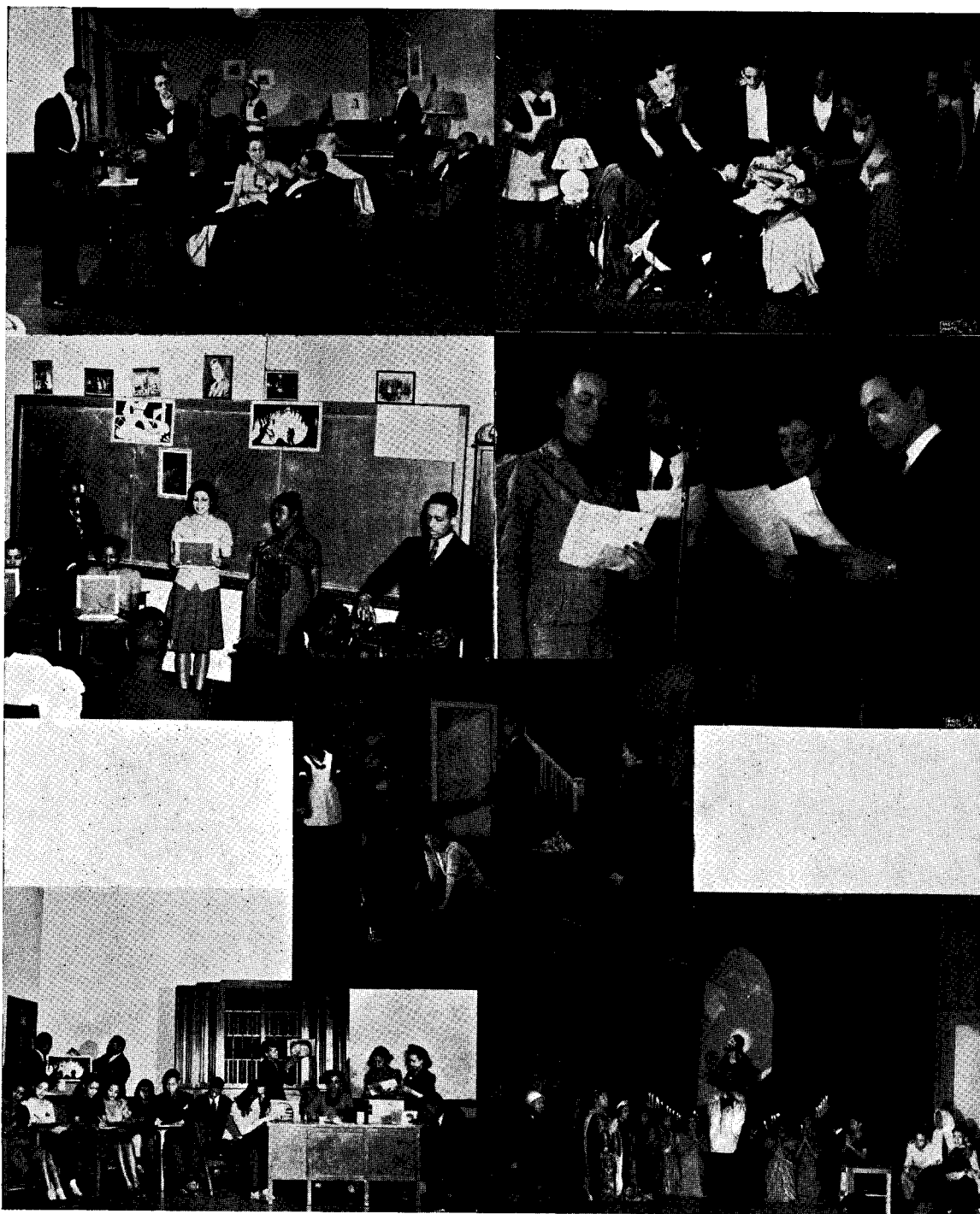
### PRODUCTION STAFF

Thomas E. Poag, Director; Laura M. Averitte, Director; Edward Hale, Associate Technical Director; Boyd Page, Stage Manager; Benjamin Lewis, Assistant Stage Manager; Virginia Mason, Property Manager; Frances Toalston, Make-up Artist; Geneva Morrow, Costume Designer; Charles Hunter, Scenic Designer; Milton Crook, Photographer; Sir Launcelot Owen, Electrician; Bertha Eppse, Costume Designer.

The Tennessee State Players Guild has staged since 1939 the following 3 act plays: "Death Takes a Holiday," "The Male Animal," "The Family Doctor," "Adam and Eva," "The Family Upstairs," "Craig's Wife," "Dark Victory," "Smilin' Through," "Little Miss Fortune," and "The Curtain Rises."



# Players Guild



1. Scene from "Death Takes a Holiday."
2. Scene from "Adam and Eva."
3. Scene from "The Male Animal."
4. Class in Speech Correction.
5. Class in Play Writing and Play Production.
6. Class in Radio Production.
7. Scene from "Why the Chimes Ring."

# EDUCATION WORKSHOP



# Education Workshop



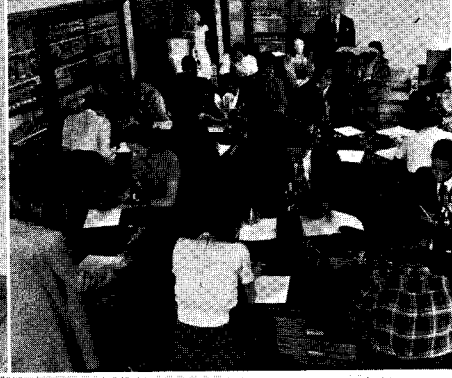
During the Winter Quarter, 1942, a selected group of seniors were enrolled in an education workshop. Headquarters for the group were established in the form of a reading room on the first floor of the Library. The following faculty members served as major consultants: Dr. George W. Gore, Jr.; Mrs. H. E. Hale; Mrs. Alma Dunn Jones, Miss Eunice Matthews and Mrs. F. A. Sanders.

# *Business Education* *Department*

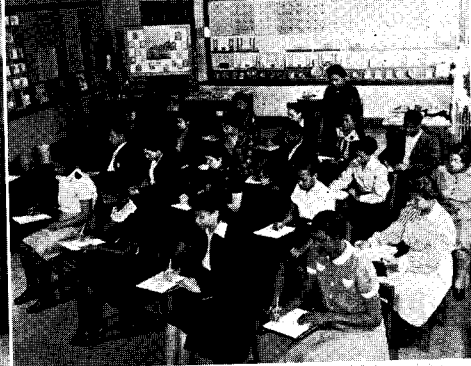




## Biology



## Fine Arts



## Home Economics and Foods





# North Wing Research Club

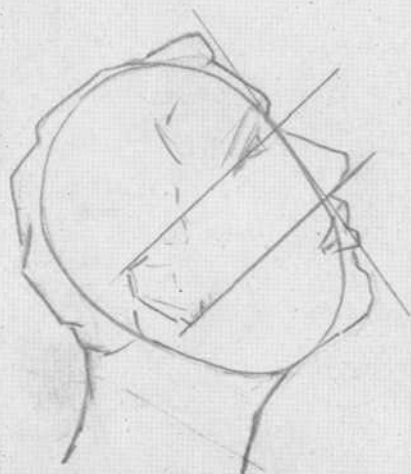
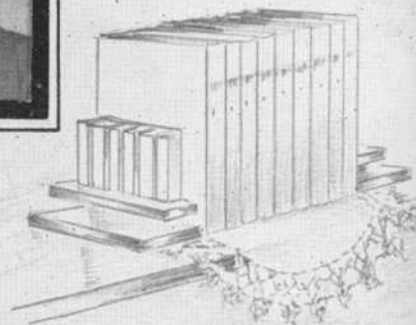
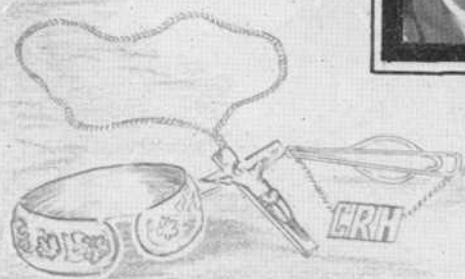
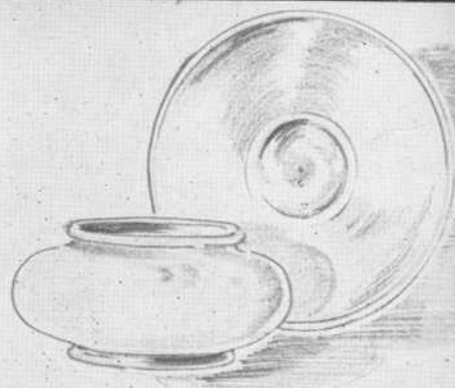
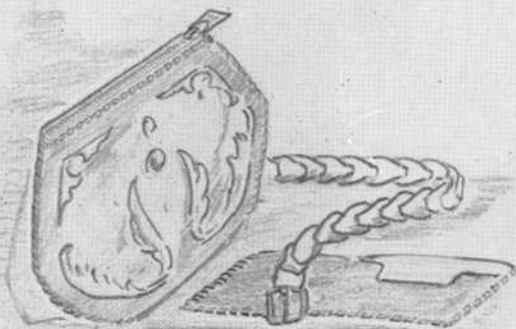
## MEMBERSHIP PERSONNEL

Thomas G. Laster, President; Fred J. D. McKinney, Secretary-Treasurer; Josef C. James, Chairman of Program Committee; John C. Ballard, Alger V. Boswell, R. E. Clay, Merle R. Eppse, George W. Gore, Jr., W. J. Hale, Sr., Lester Lennon, Thomas E. Poag, D. A. Williston.

The time comes in the development of organized life for a story—sometimes a beautiful story—and sometimes one that is not so beautiful. The North Wing Research Club tells its story of discovery.

Sunday, the 20th day of February, Nineteen hundred and forty, five faculty men sat talking—Let us tune in—Economics—Higher Education—Insurance—War—and the World of Tomorrow—After this kaleidoscopic treatment of international and domestic problems, the aforementioned club was founded.

The purpose of the organization is to stimulate discussion and research on problems of a general and professional nature.



THE DEPARTMENT OF ART



# The College Cafeteria



The College Cafeteria holds a unique place in the program of school affairs. It is one of the many places on the campus that stands for efficiency and courteous service.

The reputation of successful management may be attributed to many causes. For approximately twenty years, Mrs. Janie Stanback Elliott has devoted her unselfish service to the cause of making "meal time" a "happy time." Foods of the best quality are prepared by student help under the direct supervision of Mrs. Elliott. Neat, clean and interested young men and women forming the "Personality Group" under the direction of the Department of Business Education, are responsible for the service and checking. The food is both attractive and wholesome as special care is given not only to how it looks, but to the nutritive value to be received.

Mrs. Elliott is assisted in this work by Mr. L. Tolliver, assistant manager and Miss Mabel Evans,

(Continued on Next Page)

# The College Cafeteria



## THE COLLEGE CAFETERIA (Continued)

instructor in institutional cooking. Chief among the student assistants are Mr. Donald K. Bently in charge of food preparation; Mr. James E. Farrell, assistant; and Mr. Clarence Johnson, in charge of the wholesale department and building.

The cafeteria has not only served the students and faculty, but it has extended its service to personalities of national and international character. The legislature meets biennially in Nashville, at which time it is the privilege of the college to entertain them at a luncheon in their honor. Various organizations including the New Farmers of America, the YWCA, the Tennessee Negro Education, National Conference of State Supervisors and Teacher Trainers in Agriculture and Home Economics, Meeting of Deans and Registrars, National meetings of Fraternities and Sororities, Ministers Alliance and others, have held elaborate banquets in the college cafeteria. Visitors from all sections of the country have shared in the hospitality the cafeteria offers.

# CONCERT SINGERS





# Concert Singers

For more than ten years the Concert Singers, under the direction of Mrs. Marie Brooks Strange, have carried their songs of goodwill throughout the State of Tennessee, as well as into other states of the Union. It is by means of their fine contacts that State College has made new and lasting friends. In 1932 and 1933, they sang at the Chicago World's Fair while thousands listened with enthusiasm. When Kagawa, the great Chinese educator, spoke to a packed house in Memphis some four years ago, these singers brought thunderous applause. St. Louis presented them in the large opera house during the meeting of the National Education Association in 1936. They appeared on the Tennessee Day program at the New York World's Fair, 1939, at which time they were broadcast over a nation-wide hook-up, and again by return invitation in 1940. The singers again appeared in St. Louis, in February, 1940, at the meeting of the National Education Association, where in the Gold Room of the Jefferson Hotel they rendered a program for the American Association of Teachers Colleges. In June, 1940, the singers made a triumphal tour through the Midwest which included engagements in Minneapolis, Minnesota, at the National Convention of the Kiwanis Clubs, in Chicago at the University of Chicago and at other educational institutions in Illinois and Indiana.

Networks from coast to coast have picked up their Columbia Broadcasting programs. The group has had regular appearances on the program, "Song Time in Tennessee." On numerous occasions, individual artists, selected from the group, have been featured on the radio.

Tours throughout the State are annually scheduled by the singers, at which time they are invited to appear before college and university audiences. Concerts in the city of Nashville have included George Peabody College for Teachers, Vanderbilt University, Scarritt College, the Hermitage Hotel, the Andrew Jackson Hotel, Chamber of Commerce and the meeting of the Governors of Southern States at the Governor's mansion.

The Concert Singers have sung to the President of the United States, Mr. Franklin D. Roosevelt and to four governors of Tennessee: Governor Hill McAlister, Governor Gordon Browning and the present Governor Prentice Cooper.

The group receives the hearty cooperation of the President of the College, Dr. W. J. Hale, who believes in developing the individual's special aptitude to the fullest of his capabilities.

Mrs. Marie Brooks-Strange, able director of the singers, gives untiringly of her time and energy in order to inspire her chorus to still greater achievement. The following expression from one of the leading educators of America bespeaks the general enthusiastic attitude with which the group is received:

"Indeed, I cannot recall any program ever presented in this institution during the twenty years of my connection here which has ever called for so much enthusiastic response from the students and faculty as well. I was expecting a great deal from your group, but I must confess that you exceeded even my highest expectations. The work you are doing in music at A. and I. State College ranks easily now among the high achievements of the Negro race in the United States, and I most warmly congratulate you and all others who have any part in this fine record."

The following members of the group have distinguished themselves. Forrest W. Strange, Silas Cephus Douglass, Gwendolyn C. Hale, Lottie Springs-Smith, Alexander Carney, Louis C. Tolliver, William Gillespie, Inge Hardison, Modestine Young, Laura Edmonds-Clay, Olivia Lane Jones, Benton A. Adams and Hilda McGill-Taylor.



HELEN BOYD HOWARD  
*Most Brilliant Woman*

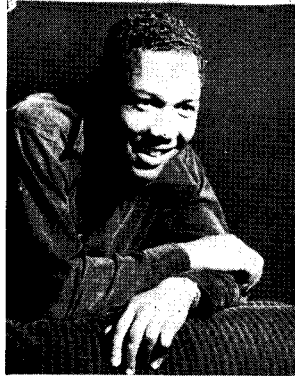
CLARENCE KIMBROUGH  
*Most Brilliant Man*

---

LEO BRANTON  
*Most Handsome Man*

---

CARRIE HIGHTOWER  
*Most Beautiful Woman*



HELEN SEENEV  
*Most Versatile Young Woman*

LORENE LEWIS  
*Most Popular Young Woman*

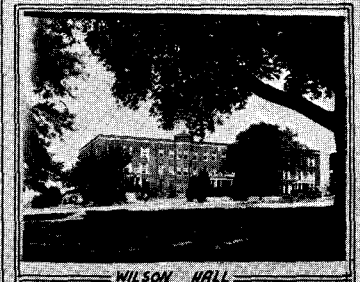
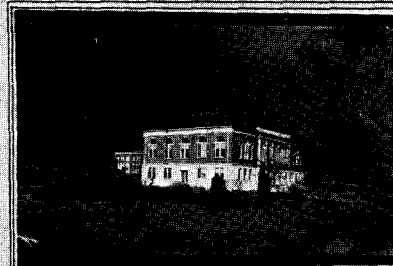
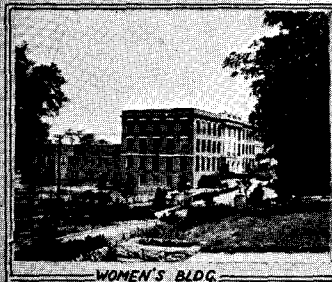
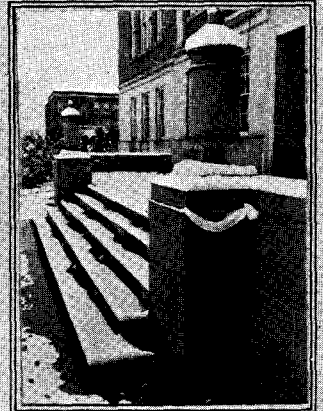
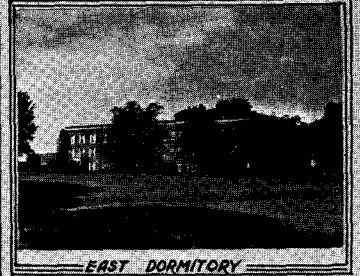
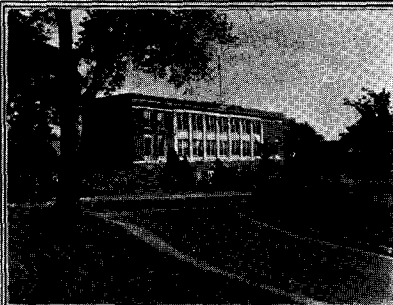
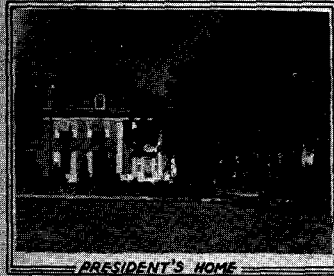
WILLIAM COX  
*Most Versatile Young Man*

HARRY SCOTT  
*Wittiest Young Man*

WILLIE MAE KIDD  
*Wittiest Young Woman*

JAMES McMILLAN  
*Most Popular Young Man*

# Campus Winter Scenes



# When Celebrities Visit Campus



Foreign Students  
Pres. Hale and State Director for U. S. Stamps and Bonds  
At Goodwill Manor



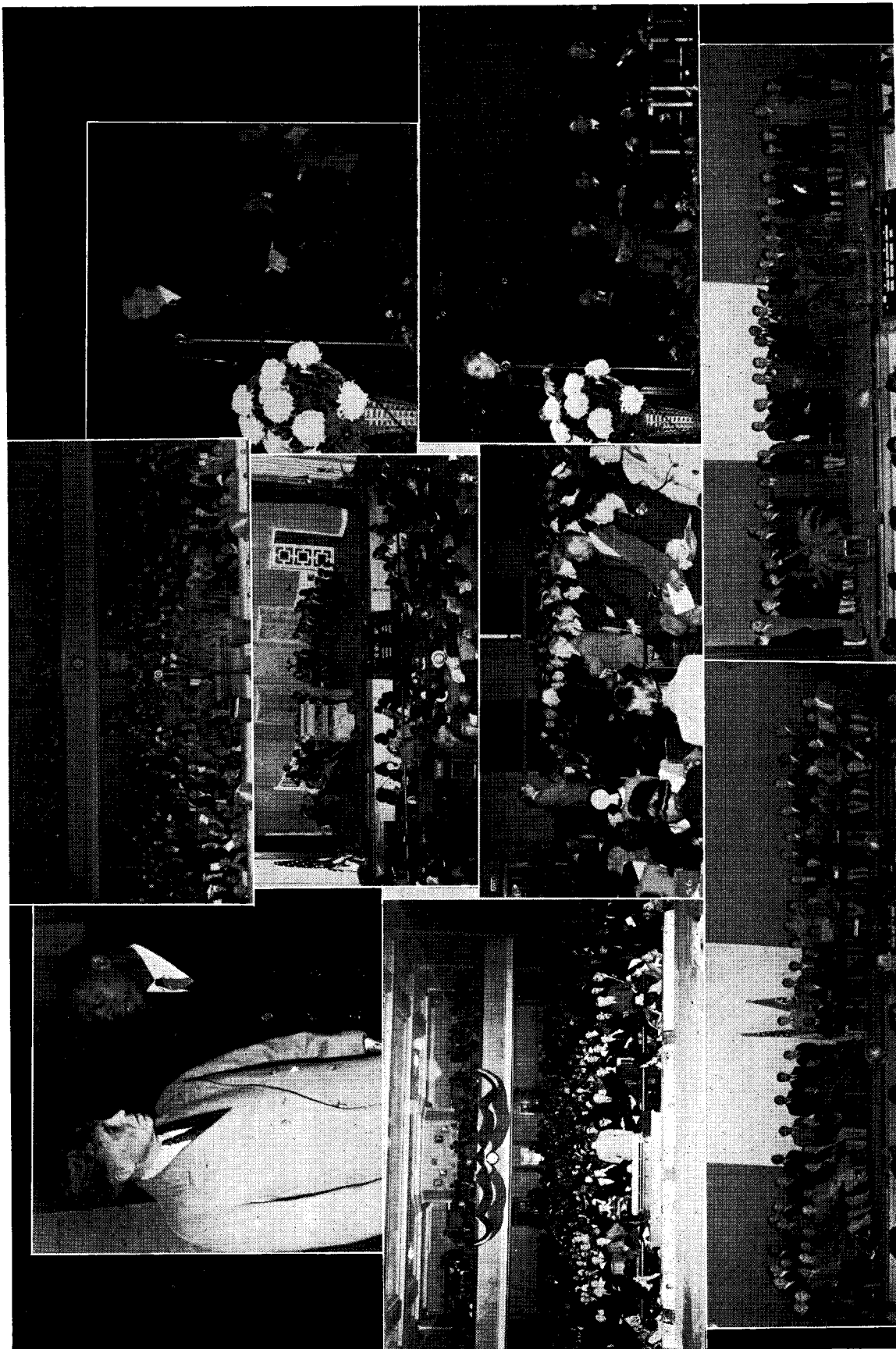
Marion Anderson Sings  
Presentation of Diplomas of Merit



International Sunday  
Mrs. Elliott is Honored  
Interracial Day



# Special Events



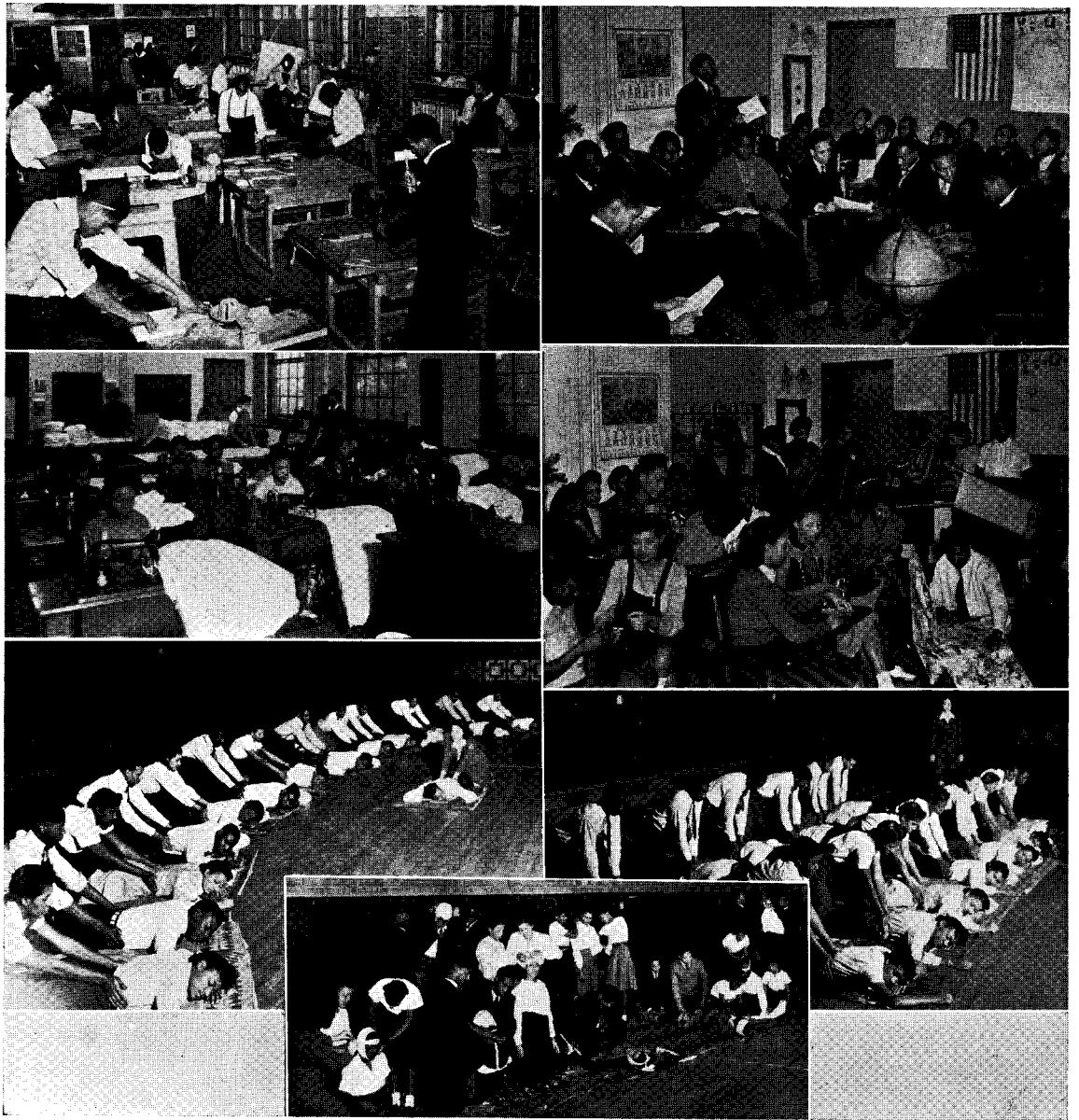
Chief Justice Green

Special Chapel Events  
The Governor Speaks  
War Stamps and Bonds Purchasers

Prexy and Dean Pickens

[illegible]

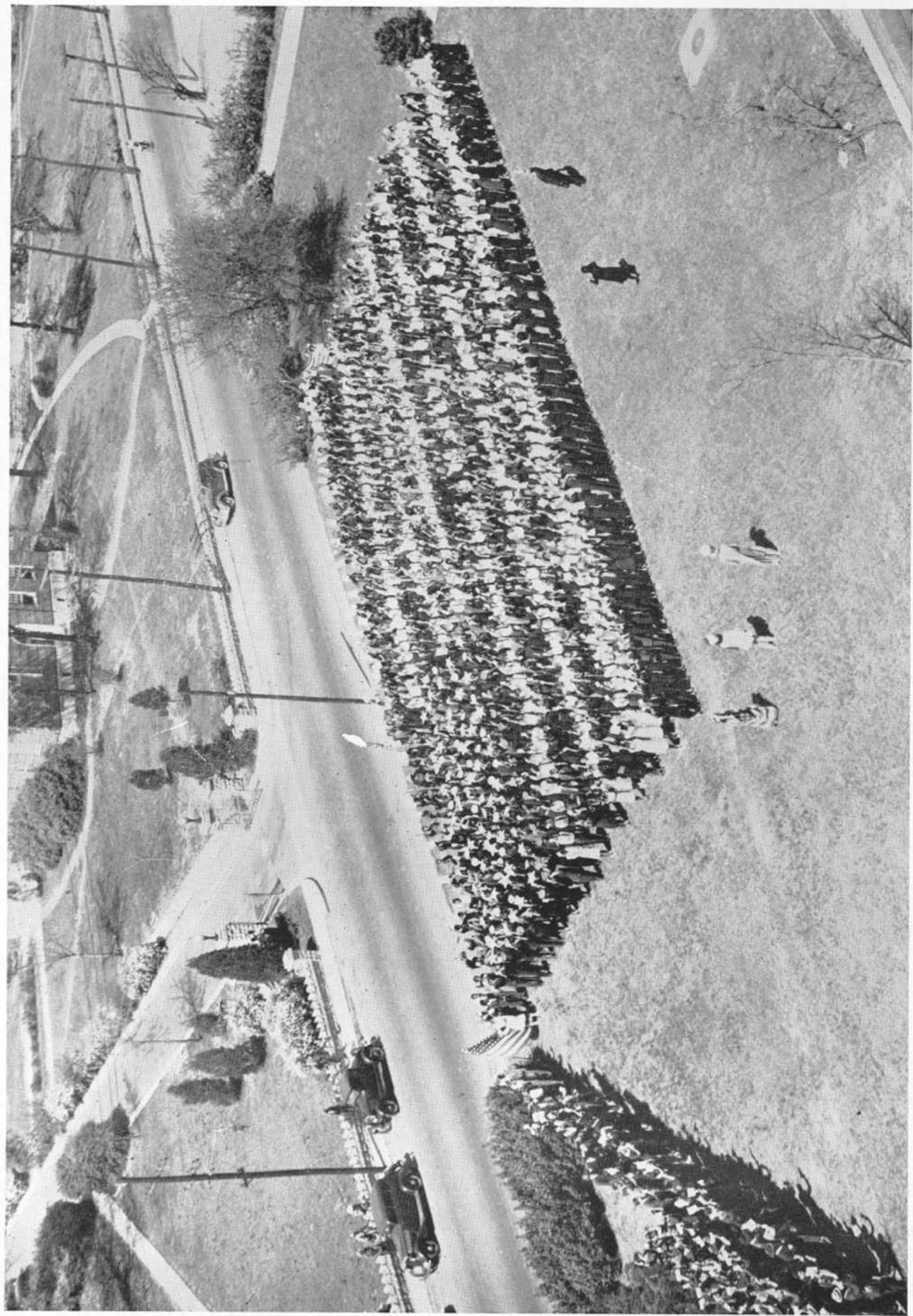
# N. Y. A. Enrollees at Work and Play



## A. and I. MAKES THE HEADLINES







STUDENT AND FACULTY WAR STAMP AND BOND PURCHASERS FORM U. S. FLAG