



AYENI
1930

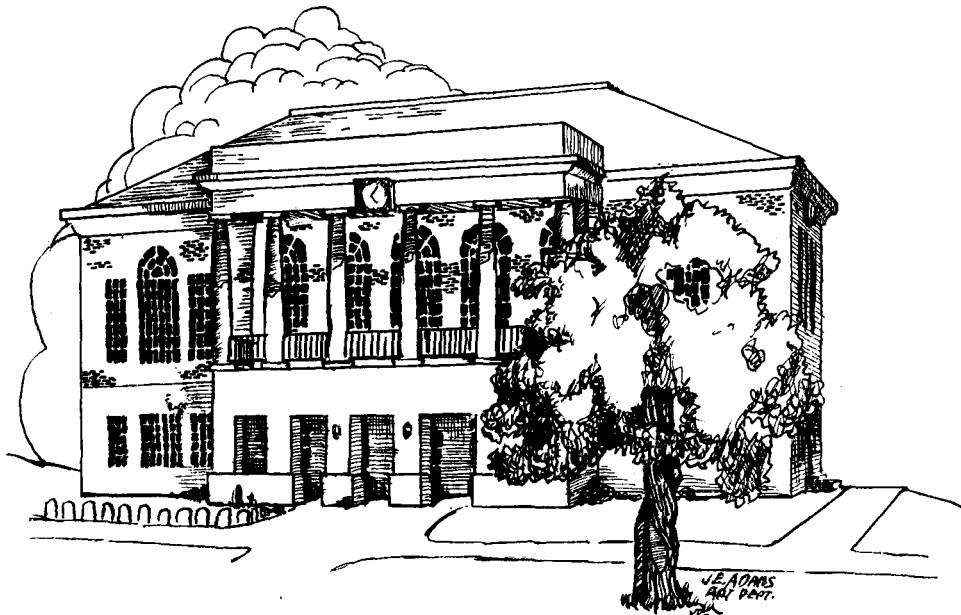
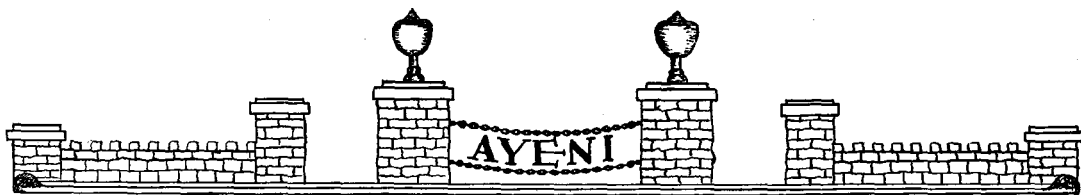
A Y E N I

Yearbook of
Tennessee Agricultural and
Industrial State College

NASHVILLE



Nineteen Hundred and Thirty



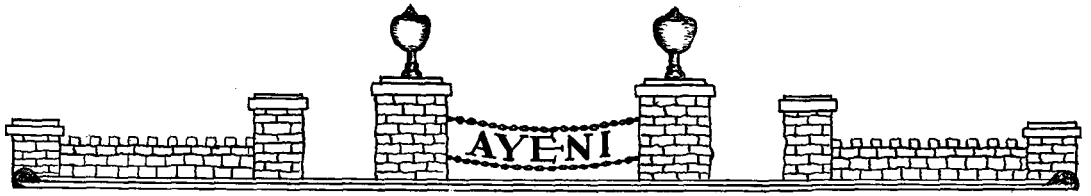
Foreword

Lest we forget, we have compiled in the pages of this our first Ayeni, the images, impressions and factors working toward traditions of our school, which is still in its pioneer days.

Looking backward we see what great strides we have already made through the noble influence of our president, William J. Hale, whose efforts have led every student to see the value in being prepared to "Think, Work, Serve."

Gazing forward we catch a vision of a larger college plant—teachers' cottages, auditorium, gymnasium, stadium, agricultural and mechanic arts buildings—from which shall pour forth men and women whose souls harbor the ambitions of past generations and whose hearts are the springs of ideals for the new.





Tennessee State College Hymn

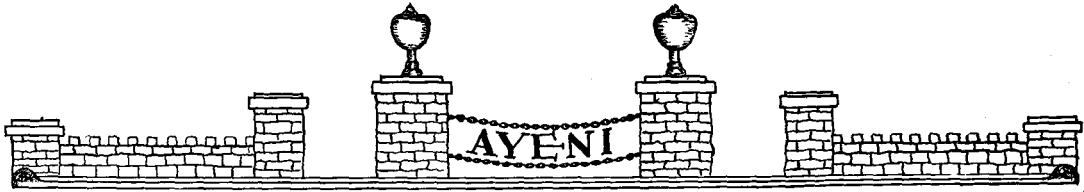
In the land of golden sunshine,
By the Cumberland's fertile shore,
Stands the school for greater service,
One that we adore.
Alma Mater, how we love thee!
Love thy white and blue.
May we strive to meet thy mandates
With faith that's true.

Many come to thee for knowledge,
Come from East, North, South and West,
For they know that thou doth offer
Such a rich bequest.
Alma Mater, all thy children
Worship at thy shrine;
May the God of nations bless thee
With gifts divine!

Send forth sons both strong and valiant,
Send forth daughters wise and true,
Filled with hope and dauntless courage,
Motives sane and true.
Alma Mater, kindly mother,
Smile on Tennessee;
May she lift her head toward heaven,
Honor country, God and thee.

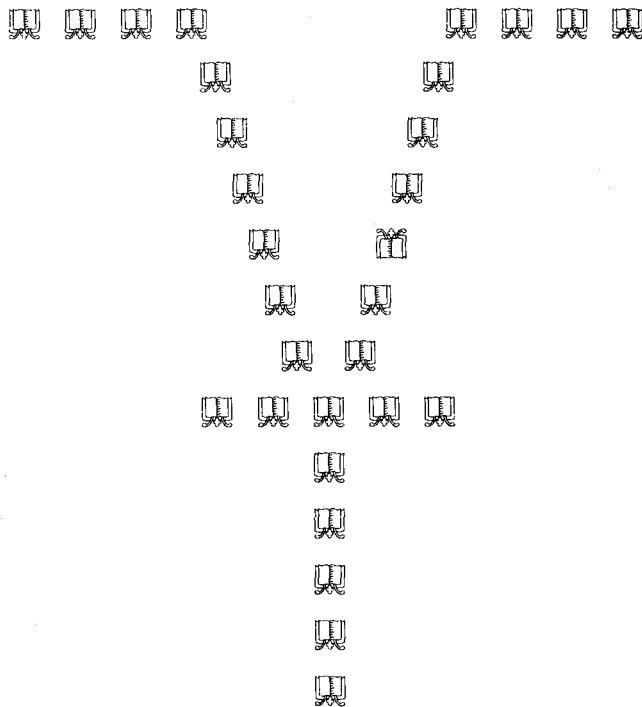
—L. M. Averitte, '18

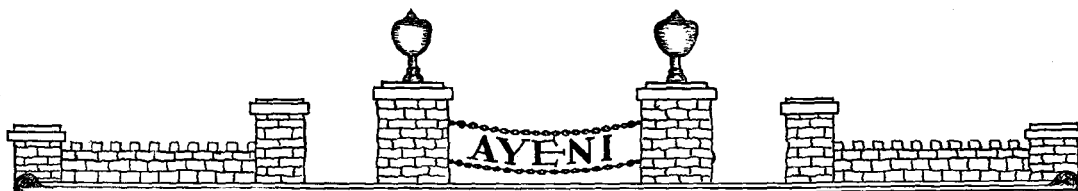




DEDICATION

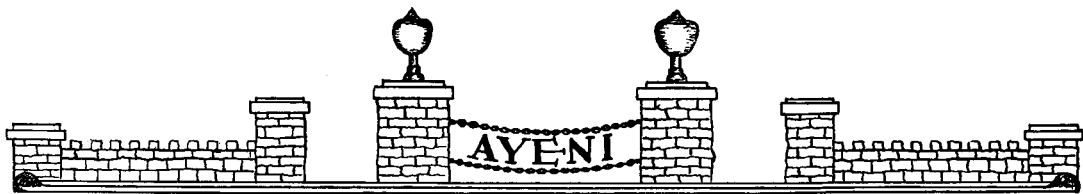
The pot of gold at the rainbow's end is the temple which houses patience, sincerity, culture, gentleness, understanding and justice. Seekers of this pot of gold often leave Alma Mater without discovering the treasure, only to return in after years to pay tribute to the one who has shed her golden light over the lives of hundreds of students. The embodiment of these virtues is our Dean of Women, Mrs. M. L. Wilson, and it is to her that we lovingly dedicate this book.





MRS. MARY L. WILSON, Dean of Women

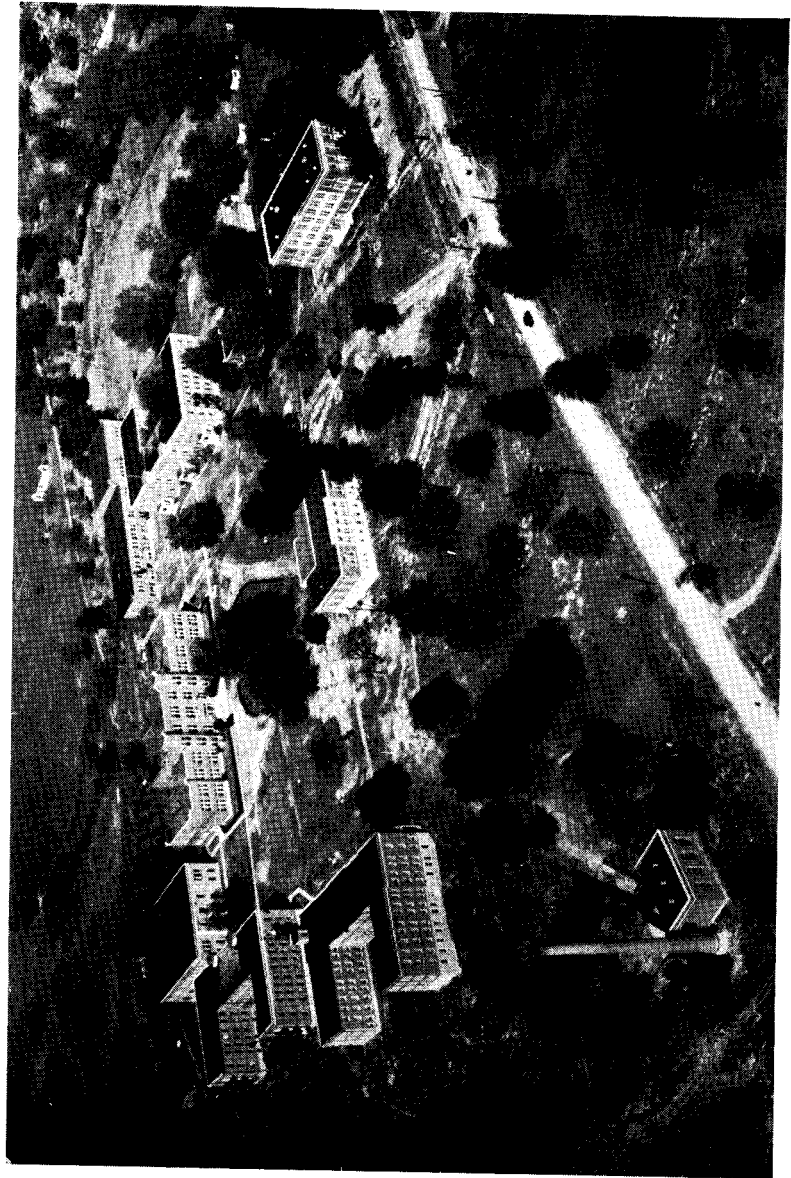
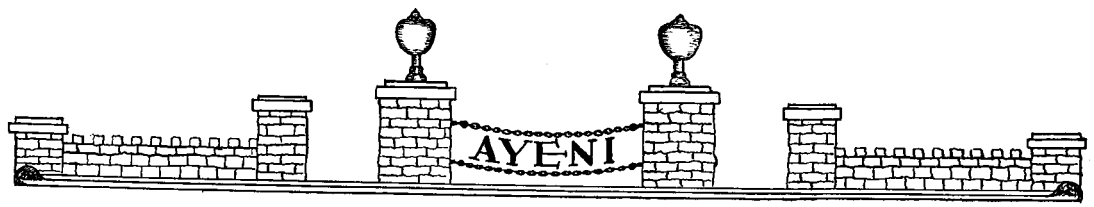




Contents

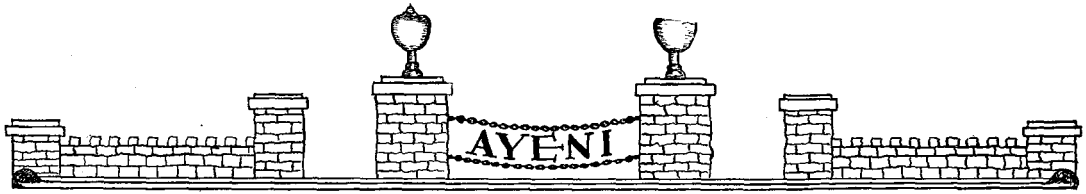
	PAGE
Foreword.....	4
State College Hymn.....	5
Dedication.....	6
Buildings and Grounds.....	9
Class of 1929.....	15
State Board of Education.....	16
Our President.....	18
Harmon Award in Education.....	20
Hale Family Group.....	22
Faculty.....	23
Senior Class.....	30
Junior Class.....	43
Sophomore Normal Class.....	47
Sophomore Class.....	51
Freshman Class.....	55
Practice School.....	59
Yearbook Staff.....	61
Organizations.....	63
Departments.....	77
Athletics.....	89
Music.....	93
Snapshots.....	97





Airplane View of Campus



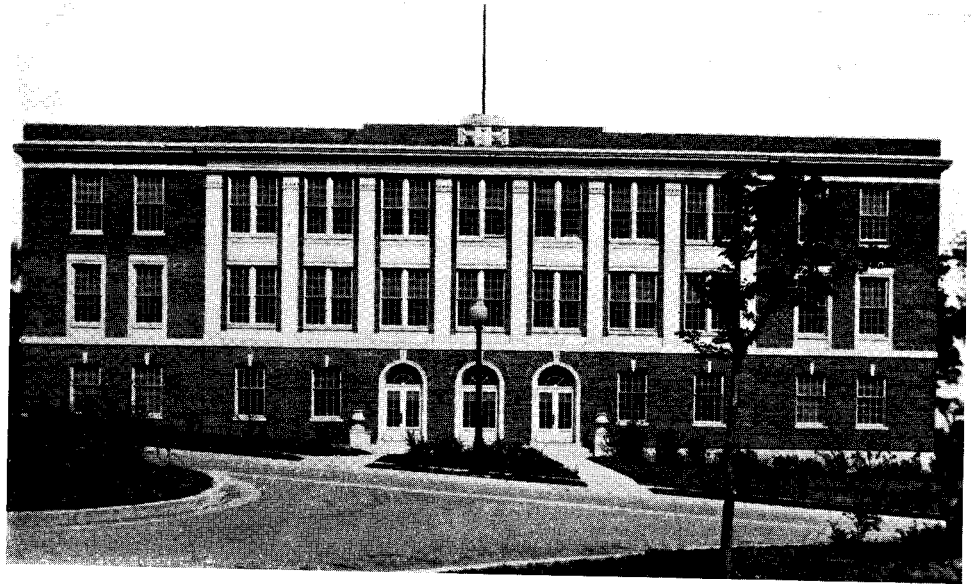
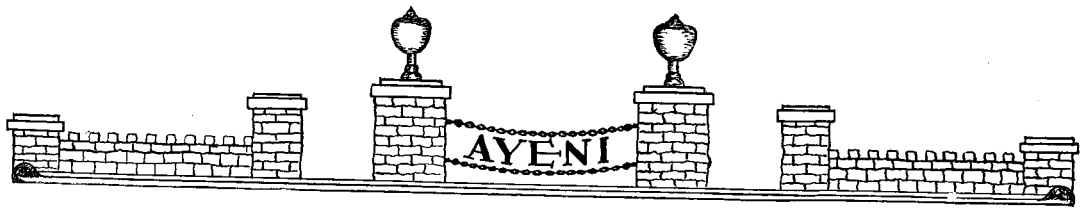


Hale Hall, College Women's Residence

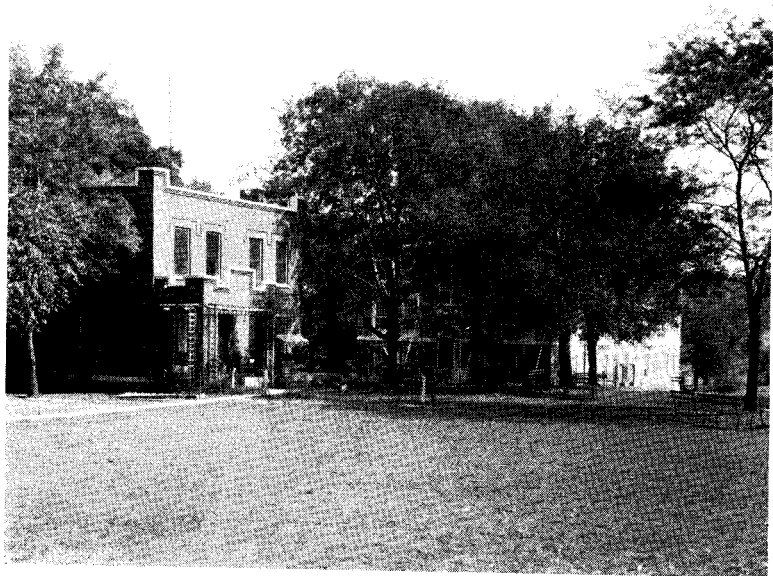


One of the four cozy reception rooms in Hale Hall, the newest of the residences for young women



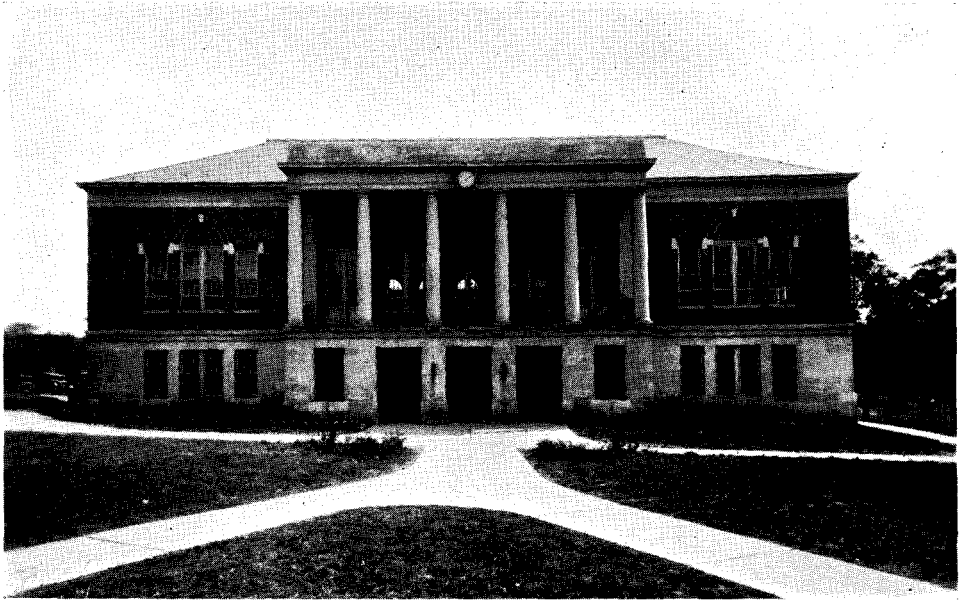
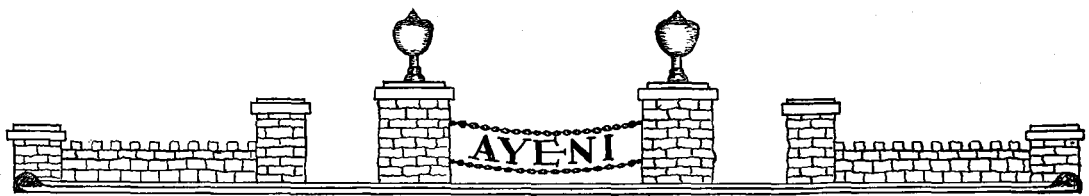


Harned College Hall

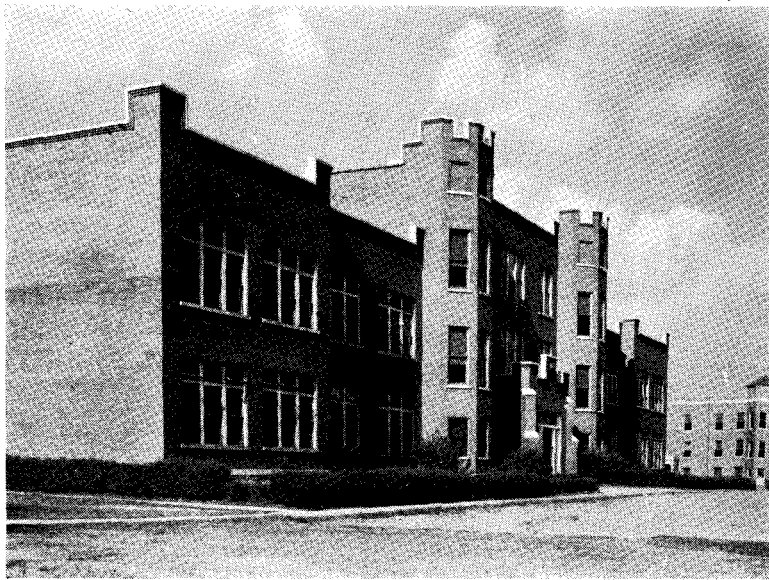


President's Home



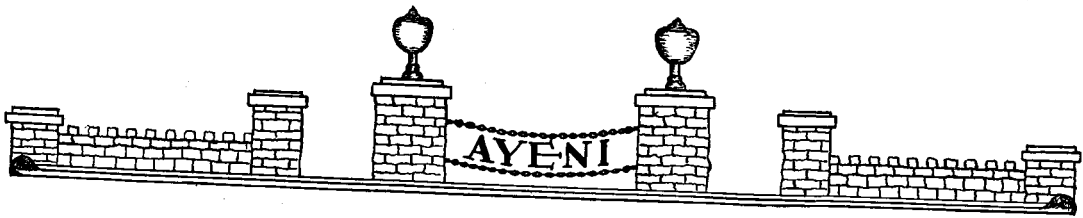


Memorial Library



Practice School



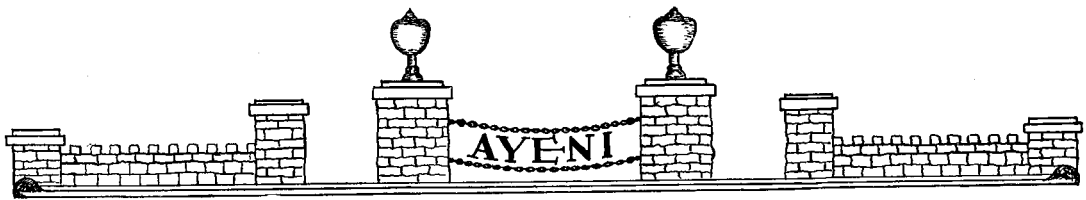


Men's Dormitory

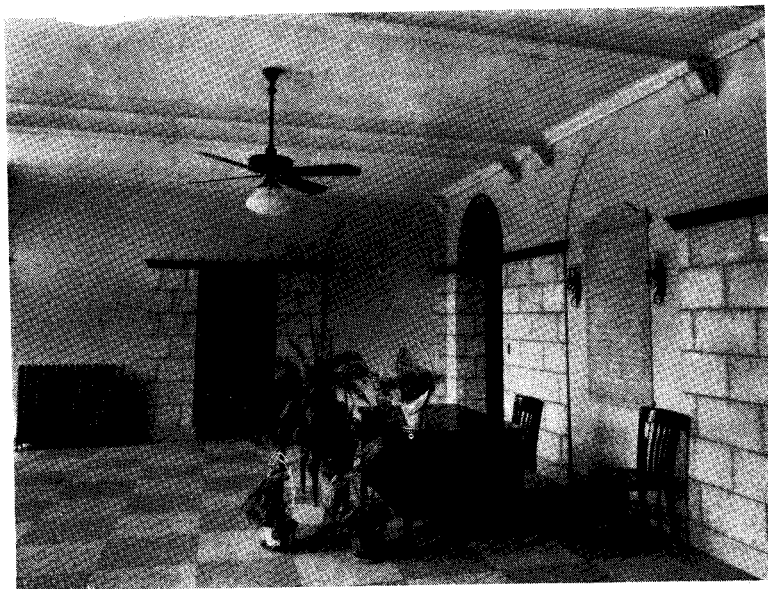


Freshmen Women's Dormitory



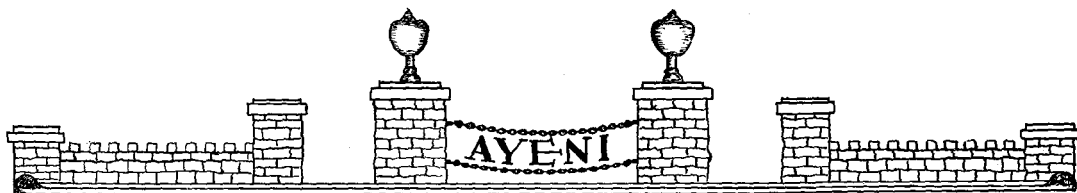


Interior View, Library



Interior View, Harned Hall





SENIOR CLASS 1929

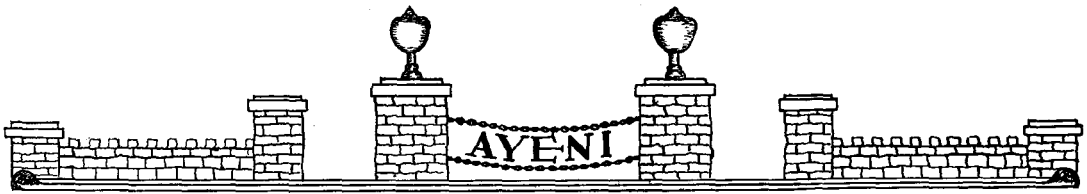


Alma Mater

Dear Old Tennessee State College,
 How we love thy glorious name!
 How each of thy sons and daughters
 Strive to add unto thy fame!
 A is for your Agriculture,
 I is for your Industry,
 All that adds to truth and beauty
 Has a sacred home with thee.

Dear old A and I,
 Live in our hearts until we die!
 Bright the path that leads to thee
 On the hills of majesty.
 We shall ne'er forget
 Days we spent with thee,
 A and I! RAH! RAH! RAH!
 A and I! RAH! RAH! RAH!
 Dear old A and I!

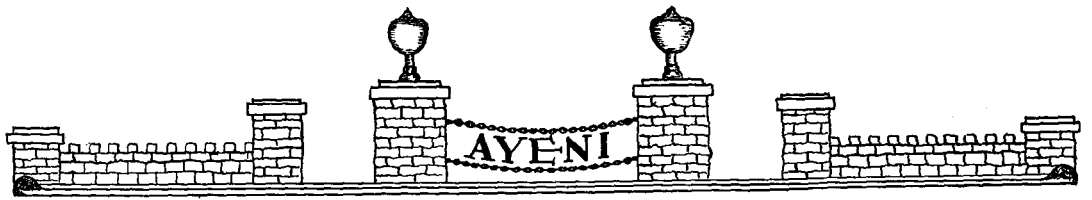




State Board of Education

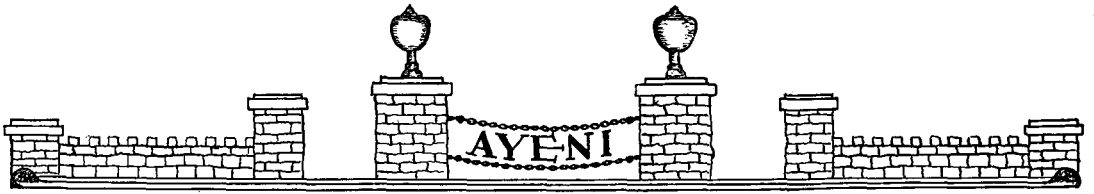
GOVERNOR HENRY H. HORTON, <i>Ex-Officio</i>	Nashville
HON. P. L. HARNED, <i>Chairman, Com. of Education</i>	Nashville
SUPT. C. B. IJAMS	Jackson
HON. J. E. BRADING	Johnson City
MRS. NEILL WRIGHT	Huntingdon
SUPT. MISS SUE POWERS	Memphis
HON. DUDLEY TANNER	Nashville
DR. SHELTON PHELPS	Nashville
HON. J. D. HAMILTON	Church Hill
HON. L. A. LIGON	Carthage
HON. SAM McALESTER	Chattanooga





HON. P. L. HARNED
Commissioner of Education, State of Tennessee





Our President

To do his little bit of toil,
To play life's game with head erect,
To stoop to nothing that would soil
His honor or his self-respect.
He wins our battles as he only can
And in it all remains a man.

To toil not by a stated chart,
To work neither watching sun nor clock;
To think always what can be wrought
With intelligent and careful thought;

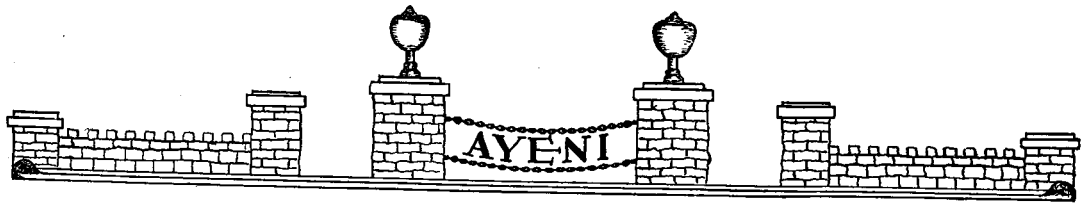
To know the bitter and the sweet,
The sunshine and the days of rain;
To meet both victory and defeat
Nor boast too loudly nor complain;
To face whatever fate demands,
And in it all remains a man.

To be the one the sages found,
To instruct a people in principles sound;
To be a saviour of a race deserved,
Teaching to think, to work and to serve.
He serves each minute of the day,
Holding fast from year to year;
Defying the critics reprimand
Yet in it all remains a man.

Promotion comes to him who tries,
To him who sticks and never tires;
To him who serves till setting sun,
Feeling his work is never done.

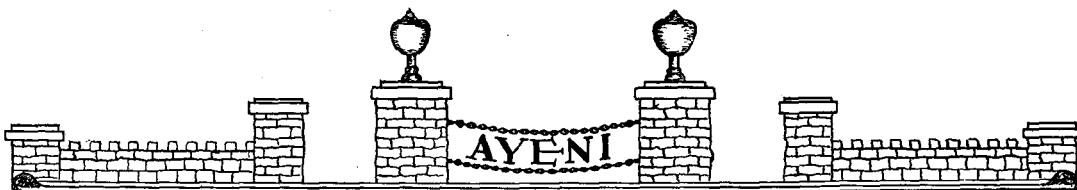
With apologies to the author of 'A Heap
O'Livin' '.



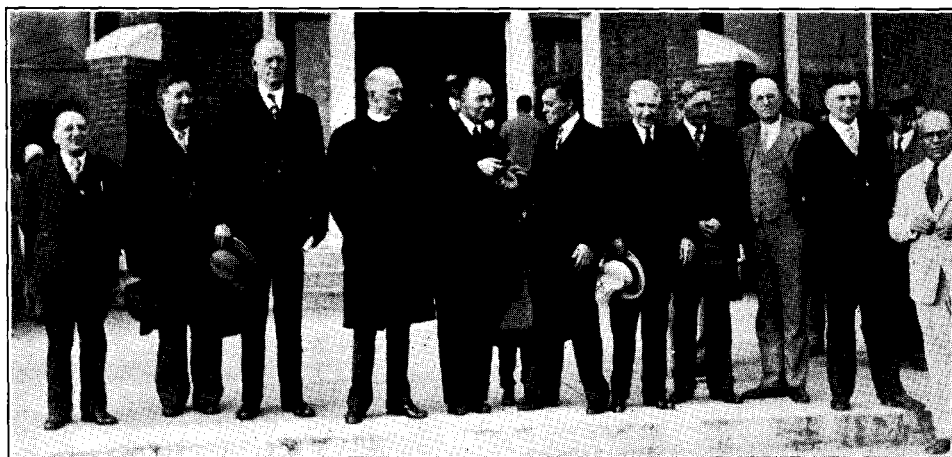


W. J. HALE, A. M., President



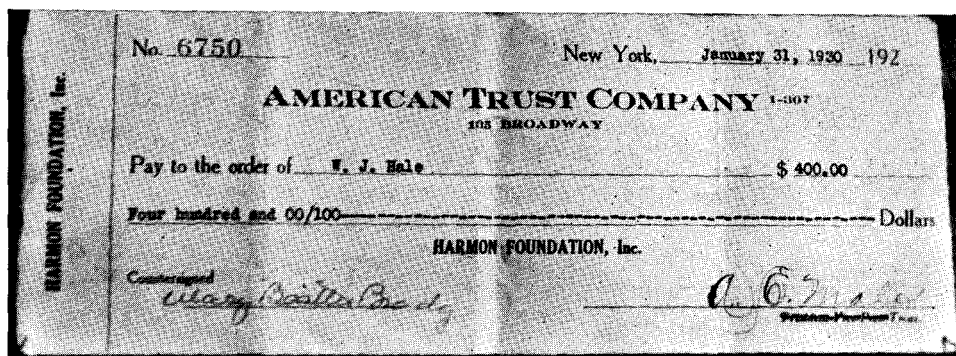


Dr. Russell Congratulates President W. J. Hale on Winning Harmon Award in Education



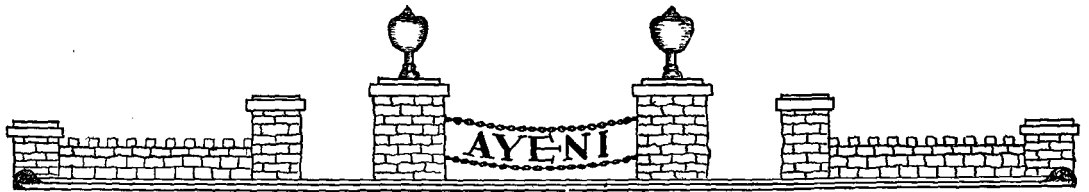
Pictured above are the notables attending the presentation. left to right: Hon. Sam Weinstein, Hon. Tom Hunter, state department education; R. L. Jones, superintendent Memphis schools; the Rev. Prentice A. Pugh, Dr. Russell, Pres. Hale, Gov. Henry H. Horton, Commissioner P. L. Harned, Speaker Charles Love, Prof. C. D. Ijams and Prof. R. E. Clay.

PROGRAM
OF
HARMON AWARD
FOR
DISTINGUISHED ACHIEVEMENT IN EDUCATION
Under the Auspices of
THE HARMON FOUNDATION
and
COMMISSION ON RACE RELATIONS, FEDERAL COUNCIL OF CHURCHES
College Auditorium, February 18, 1930, 2:30 P. M.



Harmon Award Honorarium





JUDGE JOHN H. DEWITT, Court of Appeals, Master of Ceremonies
 PRELUDE Schubert
 Marche Militaire
 A. & I. STATE COLLEGE ORCHESTRA

AMERICA
 INVOCATION—DR. W. F. TILLET, Dean Emeritus School of Religion, Vanderbilt University
 SONG Johnson
 Lift Every Voice and Sing

GREETINGS REPRESENTING
 The State, His Excellency, HENRY H. HORTON, The Governor
 Introduced by Attorney W. L. PORTER, Editor East Tennessee News
 Dept. of Education, COMMISSIONER P. L. HARNED, Chariman State Board
 Introduced by DR. R. T. BURT, Chm. Interracial League
 The City, HON. HILARY E. HOWSE, The Mayor
 Introduced by DR. C. V. ROMAN, Editor National Medical Journal

VOCAL SOLO Campbell Tipton
 A Spirit Flower
 MRS. MOSES MCKISSACK

GREETINGS:
 DR. W. F. POWELL, Pastor First Baptist Church
 COLONEL LUKE LEA, Publisher, Introduced by Supt. R. L. Jones
 HON. CHARLES LOVE, Speaker House of Representatives

VOCAL SOLO Selected
 M. Calloway Byron
 (MADAME MANITZA LOSOROS)

Medal delivered to DR. WM. F. RUSSELL by DR. A. M. TOWNSEND, Member Commission Race Relations,
 Federal Council of Churches
 Presentation of Honorarium and Gold Medal by DR. WILLIAM F. RUSSELL, Dean Teachers College,
 Columbia University
 Introduced by HON. S. L. SMITH, Rosenwald Fund

RESPONSE—PRES. W. J. HALE
 MUSIC Bremser
 The Prayer of Thanksgiving
 FISK UNIVERSITY GLEE CLUB

GREETINGS:
 Dr. H. H. WALKER, President Negro Board of Trade
 DR. J. A. LESTER, Registrar Meharry Medical College
 HON. J. C. NAPIER, Ex-Register of U. S. Treasury
 SUPT. C. B. IJAMS, School Officers Association

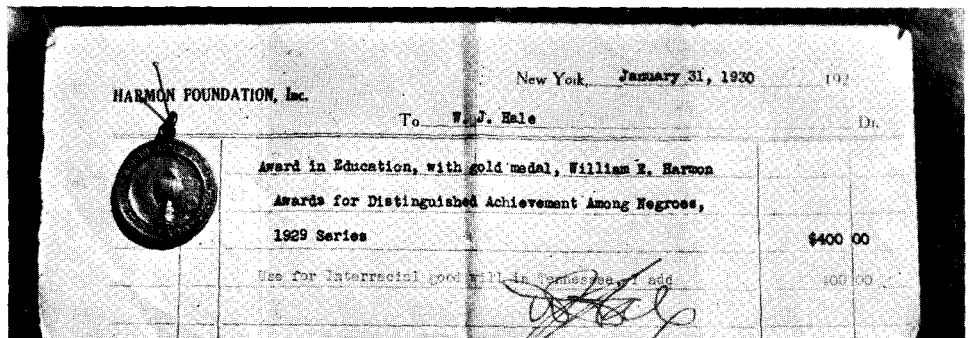
VOCAL SOLO Selected
 Mr. J. A. WINTERS
 Meharry Medical College

READING OF TELEGRAMS—DEAN G. W. GORE, JR.
 INTRODUCTION OF VISITORS—HON. D. S. TANNER

MUSIC Dett
 O Hear the Lambs a-Crying

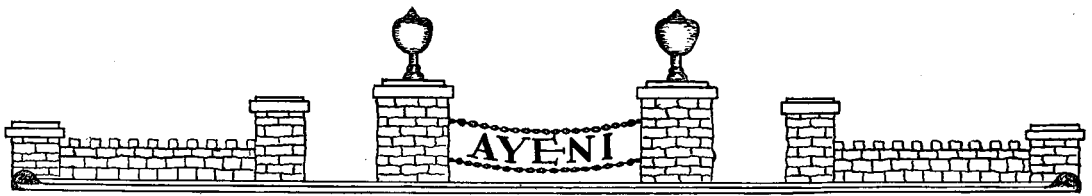
BENEDICTION—REV. W. S. ELLINGTON

JUDGES OF HARMON AWARD IN EDUCATION
 DR. SAMUEL B. HECKMAN, College of the City of New York
 DR. WILLIAM F. RUSSELL, Dean Teachers College, Columbia University
 PROF. W. T. B. WILLIAMS, Dean Tuskegee Institute
 DR. PAUL KLAPPER, Dean College of the City of New York
 PROF. MABEL CARNEY, Teachers College, Columbia University
 Program Broadcast over WLAC (Life and Casualty Insurance Co.) and WTNT
 (The Tennessean) at 2:15 P. M.



*Gold Medal, Harmon Check and Personal Gift of \$400 by
 President Hale to Interracial League*



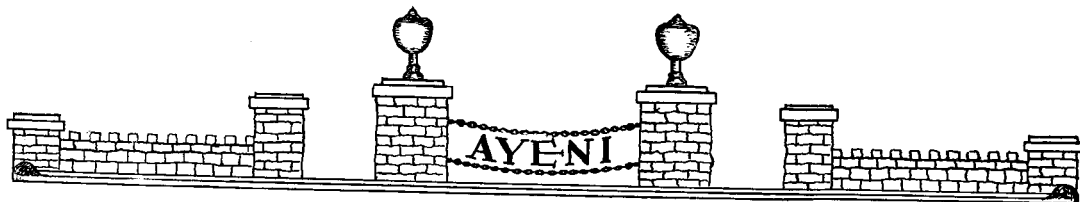


Hale Family

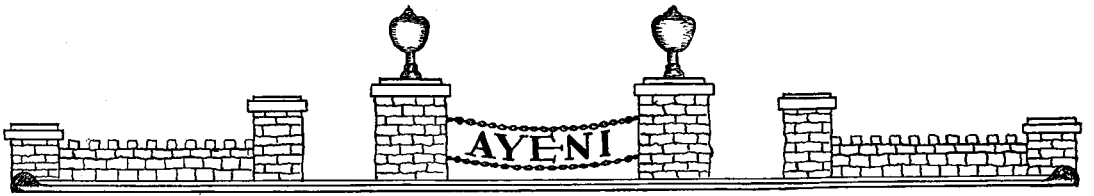


Front row, left to right, Edward, Gwendolyn, Mrs. Hale
Back row, Pres. W. J. Hale, Will, Jr., Mrs. Hodgkins



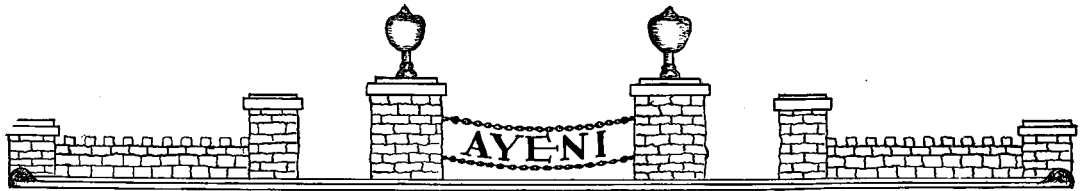


1930



Administrative Officers and Faculty 1929-30





GEORGE W. GORE, JR.
Dean
DePauw University, A. B.
Harvard University, Ed. M.
University of Chicago

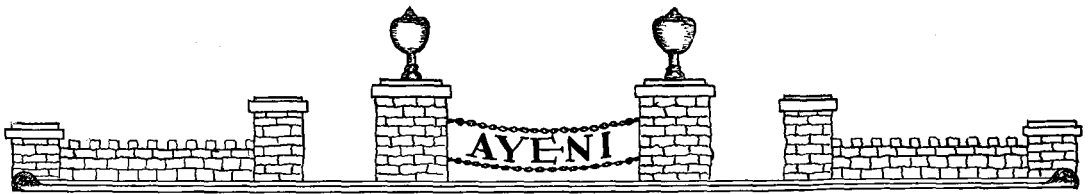


R. B. J. CAMPBELL
Bursar
Howard University



MRS. MARTHA M. BROWN
Librarian
Fisk University
American Conservatory of Music
Hampton Library School





INEZ M. BOYD
Latin
Knoxville College, A. B.
University of Chicago



MERL R. EPPSE
History
Drake University, A. B.
Ohio State University

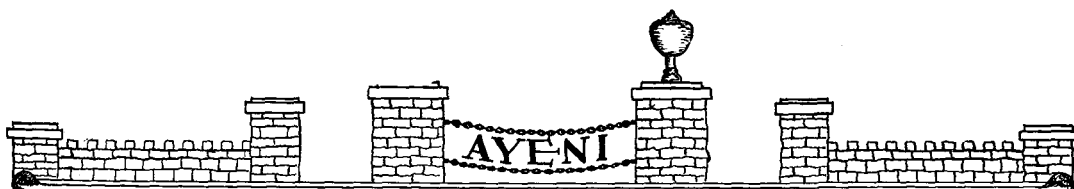


PEARL W. GORE
Cashier
Tennessee State College, B. S.



BEATRICE GORDON
Adviser to Young Women
Tennessee State College, B. S.





W. S. ELLINGTON
Ethics
Fisk University, A. B., D. D.

EDNA MAE BIGGS
Education
Wilberforce University, A. B.
Columbia University, M. A.

JAMES A. ATKINS
English
University of Denver, A. B.
University of California

HATTIE E. HALE
Commerce
Fisk University, A. B.
Tennessee State College, B. S.
Columbia University, M. A.

WILLARD JOHNSON
Biology
University of Kansas, A. B.
University of Chicago, M. S.

FRANCES E. THOMPSON
Art
Massachusetts Art Institute, B. S.
Snow Froehlich School of Industrial Art

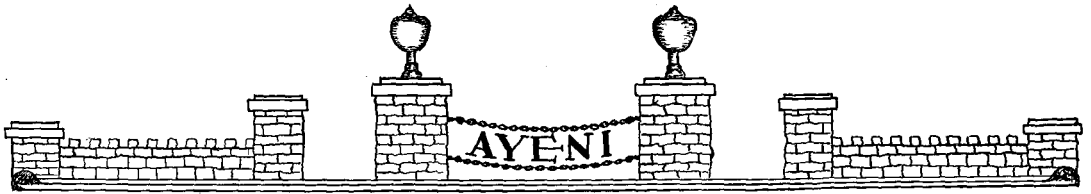
SILAS B. THORNTON
Mathematics
Tennessee State College, B. S.

MARY J. RILEY
Home Economics
Fisk University, A. B.
Tennessee State College, B. S.

WILLIAM H. MOTT
Mechanic Arts
Tuskegee Institute
Chicago Technical College

KATHERINE GILLESPIE
Asst. Registrar
Howard University, A. B.





CHARLES S. MORRIS, JR.

English

University of Chicago, Ph. B.

Columbia University, M. A.

ELBERTA ERVIN

Home Economics

Tennessee State College, B. S.

CLAUDE W. McCRAE

Mechanical Arts

University of Illinois, B. S.

DOROTHY BURDINE

Education

Colorado State Teachers College, A. B.

JAMES F. McCLELLAN

Science

Fisk University, A. B.

MARIE BROOKS

Music

American Conservatory of Music,
Mus. B.

MARY L. PARHAM

Commerce

Tennessee State College, B. S.

THOMAS M. ELLIOTT

Agriculture

Knoxville College

MYRTLE KELSO

Romance Languages

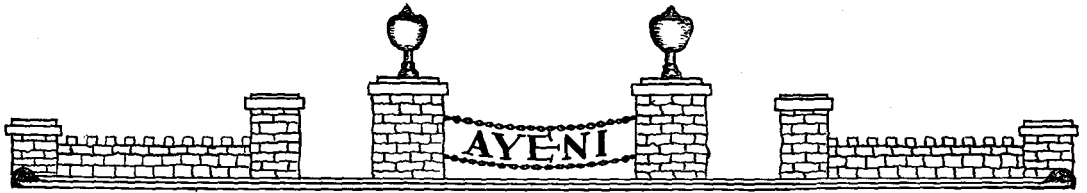
University of Chicago, Ph. B.

GEORGIA LAWSON

Matron

Chicago Art Institute

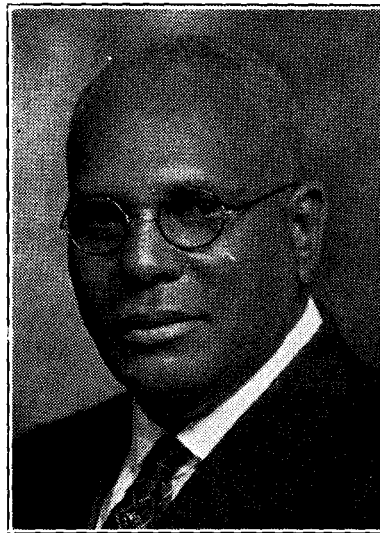




WILIFRED W. LAWSON
Agriculture
University of Syracuse, B. S. A.

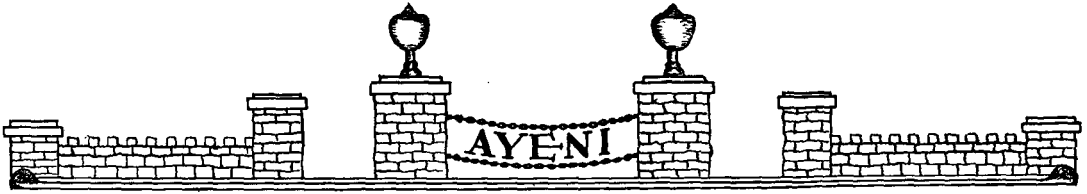
EDMONIA S. GRANT
Education
Howard University, A. B.
Hunter College

HENRY GOODEN
Engineer
Tuskegee



R. E. CLAY
Rosenwald School Agent
Bristol Normal Institute





Class Poem

Comrades, at last we are nearing
The port that harbors our dreams,
And afar off I see in the clearing,
The object of all our schemes.

No fear or care had we—
Our captain was wise and sure,
And we spent our time in mirth and glee
For we knew he would guide us through.

But now we are nearing the city,
And when we have reached our goal
We must leave our pilot to his duty
And make our way alone.

Some day, in the dim distant future,
We'll be captains on ships of our own,
And our hearts will beat with rapture
If we bring our crafts safely home.

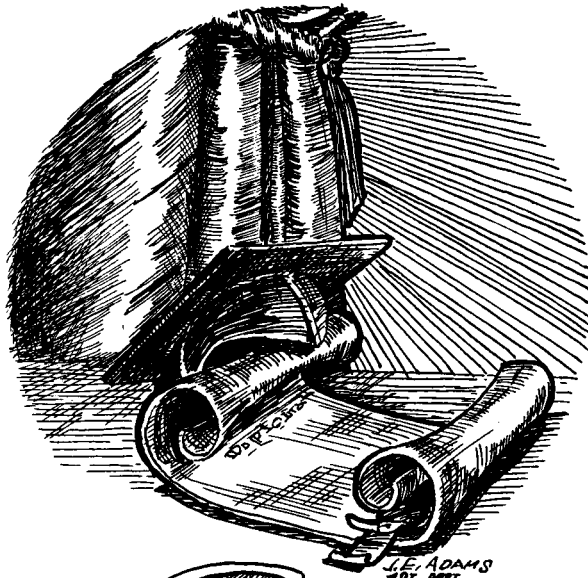
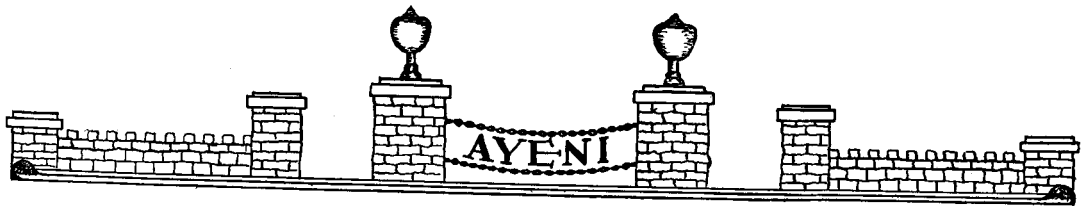
Thinking, working, serving,
Each in his own different sphere.
Taking pride in the things we are doing
For they reflect the labor of years.

Undaunted by buffets and failures,
Remembering our will makes the way,
Mindful that things not striven after
Are not the things that pay.

Onward, yes, ever onward—
Courageous, calm and true,
For the world will not countenance failure.
But to the stalwart it pays its due.

—Monyette King

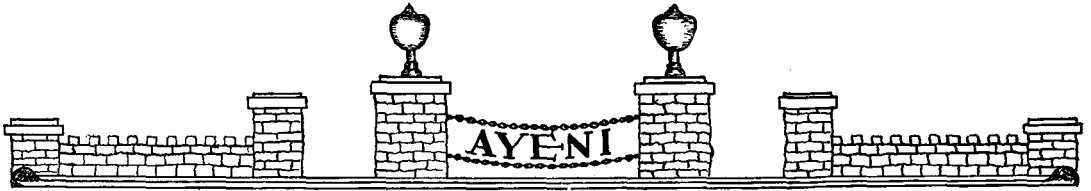




J.E. ADAMS
-1917-1918

SENIORS





Class Will

We, the Class of '30, now about to pass into dissolution, being in possession of all of our senses and conscious of our shortcomings and sins, desire to have others profit by them, do make, publish and declare this as our last will and testament:

SECTION I

To the Class of '31: Our seniority together with our ability to acquire and maintain our dignity.
To the Class of '32: Our ability to know a good thing when we see it—and push it along.
To the Class of '33: Our slogan: "That everything comes to those that wait, but you can get it much quicker by going after it."

SECTION II

To Dean Wilson, an X-ray so she can see what is going on behind closed doors.
To Dean Gore, a Journalism class that will be able to edit The New York Times.
To Mr. D. A. Forbes, the Normal Instructor and Primary Plans for his elementary course in Chemistry.
To Mr. Charles Satchell Morris, a book on "How to Teach".
To Mrs. W. J. Hale, a shorthand class in which the entire class will pass the Civil Service examination

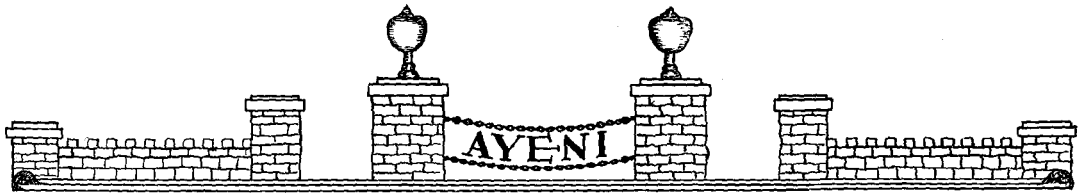
SECTION III

To John Bridgeforth, Luby Carman's general usefulness so he can be of some service to the campus.
To Lois Kilgore, Caroleen Steven's ladylike disposition.
To William Lacey, George Hale's melodious voice.
To Lillian Ricks, Mabel Henderson leaves Frank Crndorff so she will have a college man.
To Kurtys Clay, Bob Smith's egoism, which added to his own, will be enough to supply the whole Junoir Class.
To Sara Stephenson, Anna Barnes' ability to master shorthand.
To Gertrude Lacy, we will a private telephone so someone else can get to use the one in the office.
To Carolyn Beard, Mattie Baker's grace.
To Ned Rawls, we leave a private instructor in the art of terpsichore, so he can keep off of other's feet.
To Samuella Totty, Ella Henry's ability to get and hold a man.
To Bernice Conyers, Roberta Neal's capacity to attend to her own business.
To Tommy Withrow, Halton Williams leaves any one of his girls so she can say "Tommy" to him all of next year in Caroleen's place.
To Clinton Derricks, George Clem's executive ability.
To Reid Robinson, George Hall's unobtrusive and manly manner.
To Ripley Taylor, John Outlaw bequeaths his ignorance.
To Clydie Bradshaw, Ida Young's petite stature.
To Myrtle Roberts, Rosalie Hunter's pretty legs.
To Ross Cheairs, William Holt's dramatic ability.
To Juanita McNairy, Dorothy Leavelle's agreeable personality.
To Fannie Rogers, Katye Bogan's wit and humor.
To Gennie Morgan, Rosa Robinson's place in the office.
To meet all expenses which may be incurred in carrying out this our Last Will and Testament, we leave all old note-books, old themes, and bluebooks, which are to be sold, and the money realized after all debts are paid, is to be used for screening the windows of the cafeteria in order to avoid flies around the food.

Signed, sealed, published, and declared by the Senior Class as it last will and testament.

SENIOR CLASS OF '30.





ANNA M. BARNES
Nashville, Tennessee
Commerce

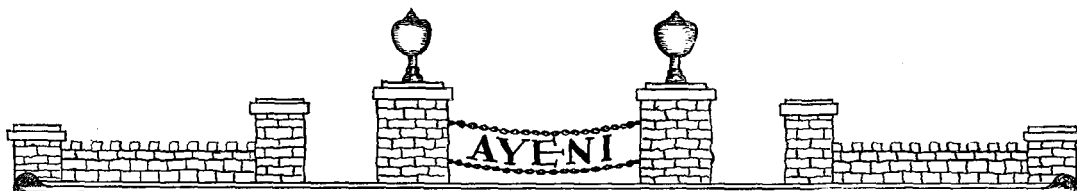
LEOLA A. BARTON
Columbia, Tennessee
Physical Science
Y. W. C. A.

WALTER BONDS
Brownsville, Tennessee
Agriculture
Y. M. C. A.

ALFRED T. BELL
Memphis, Tennessee
Mechanic Arts
Anderson Billy Hale, Jr., Club; Y. M.
C. A.

KATYE L. BOGAN
Clifton, Tennessee
Home Economics
Pi Kappa Nu

MARY T. BROOKS
Nashville, Tennessee
Social Science



MARY BELL BROWN
McMinnville, Tennessee
Social Science

PERCY B. BROWN
Lucy, Tennessee
Agriculture
Vice-President; Supreme Circle; Y. M.
C. A.; Le Cercle Francais, Sphinx
Club.

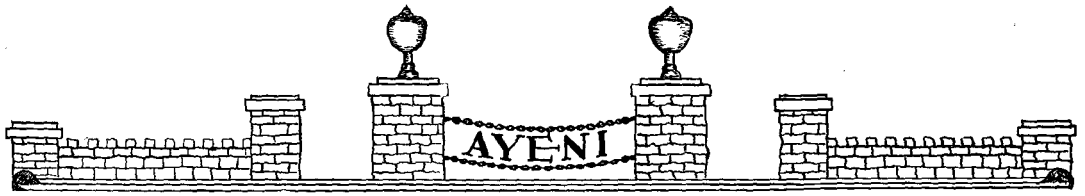
GEORGE W. CLEM
Greeneville, Tennessee
Physical Science
President; Kappa Alpha Psi; President,
Eight Links; Y. M. C. A.

WILLIAM H. CREED
Nashville, Tennessee
Social Science
Y. M. C. A.

WALTER S. DAVIS
Canton, Mississippi
Physical Science
Omega Phi Psi; Eight Links; Y. M. C. A.

VAN O. DOBBINS
Columbia, Tennessee
Agriculture
Supreme Circle Club; Varsity Football
'27, '28, '29.





HATTIE M. EDWARDS

Chattanooga, Tennessee

English

Pi Kappa Nu; Dramatic Club; Le Cercle
Francais; Y. W. C. A.

MARTHA A. EWING

Nashville, Tennessee

English

Le Cercle Francais

L. JOHN ESPEY

E. Chattanooga, Tennessee

Physical Science

Boule Guild; Chattanooga Progressive
Club; Y. M. C. A.

WALTER M. FOSTON

Hopkinsville, Kentucky

Physical Science

Phi Beta Sigma; Kentucky Club; Ander-
son Billy Hale, Jr., Club.

NATALIE FREDERICK

Columbia, South Carolina

English

Sigma Phi Psi; Y. W. C. A.

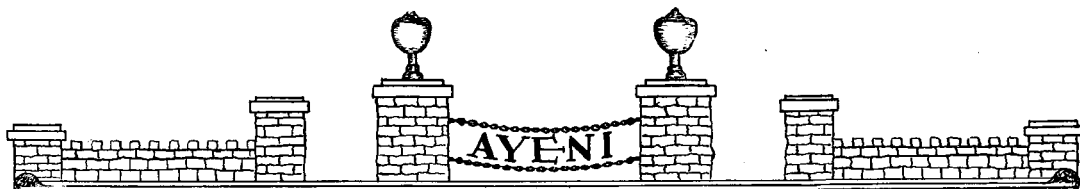
HAZEL E. M. GALLAHER

Knoxville, Tennessee

Commerce

Entre Nous





CHARLES GLASS
Hopkinsville, Kentucky
 Physical Science
 Phi Beta Sigma; Anderson Billy Hale,
 Jr., Club.

RENCHAL GODFREY
Anniston, Alabama
 Physical Science
 Anderson Billy Hale, Jr., Club; Y. M.
 C. A.

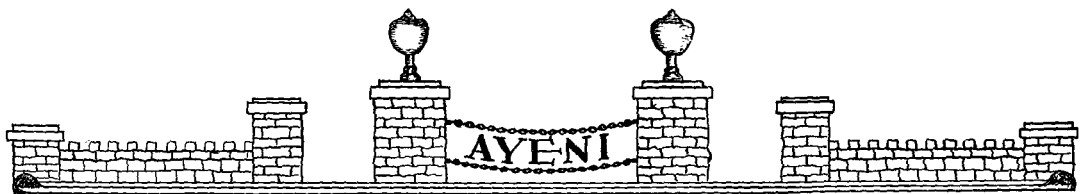
MARCUS H. GORDON
Chattanooga, Tennessee
 Physical Science
 Chattanooga Progressive Club

KATE BEATRICE GRESHAM
Nashville, Tennessee
 Home Economics
 Y. W. C. A.

GEORGE HALE
Mayfield, Kentucky
 English
 Omega Psi Phi; Boule Guild; Kentucky
 Club; Chorus.

ROBERT T. HALE
Johnson City, Tennessee
 English
 Eight Links; Le Cercle Francais; Y.
 M. C. A.





GEORGE W. HALL
Gallatin, Tennessee
 Physical Science
 Y. M. C. A.

MAMIE LOUISE HATCH
Nashville, Tennessee
 Commerce

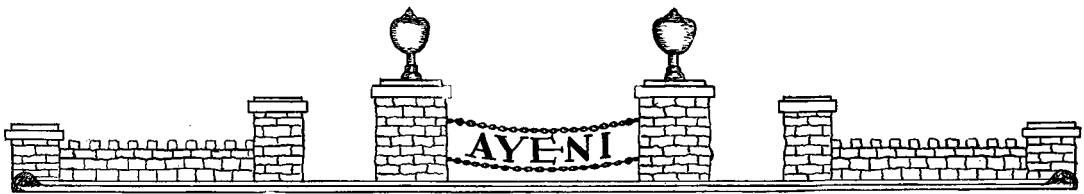
MABEL HENDERSON
Memphis, Tennessee
 Social Science
 Pi Kappa Nu; Y. W. C. A.

ELLA B. HENRY
Louisville, Tennessee
 Commerce
 Y. W. C. A.; Chorus

WILLIAM H. HOLT
Belfasi, Tennessee
 Physical Science
 Treasurer; Supreme Circle Club; Sphinx
 Club; Le Cercle Francais.

MILDRED INEZ HUDSON
Paris, Tennessee
 Home Economics
 Asst. Secretary; Y. W. C. A.





ERMA J. HUGHES
Beaumont, Texas
 English
 Le Cercle Francais

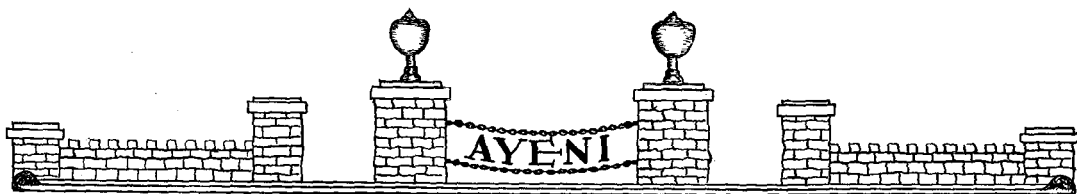
ROSALIE HUNTER
Chattanooga, Tennessee
 Commerce
 Secretary; Chattanooga Progressive
 Club; Y. W. C. A.; Chorus.

FRANCES L. JORDAN
Jackson, Tennessee
 English

MONYETTE ELIZABETH KING
Chattanooga, Tennessee
 Home Economics
 Swastika; Y. W. C. A.; Chorus.

CLARISSA LAPSLEY
St. Louis, Missouri
 Physical Science
 Pi Kappa Nu; Alba Rosa; Le Cercle
 Francais

CLIFFORD LAUDERDALE
Shannon, Mississippi
 Social Science



KATHERINE LEAVELLE
Clarksville, Tennessee
Home Economics
Entre Nous

DOROTHY V. LEAVELLE
Hopkinsville, Kentucky
Commerce
Sigma Phi Psi; Kentucky Club; Y. W.
C. A.; Pi Kappa Nu

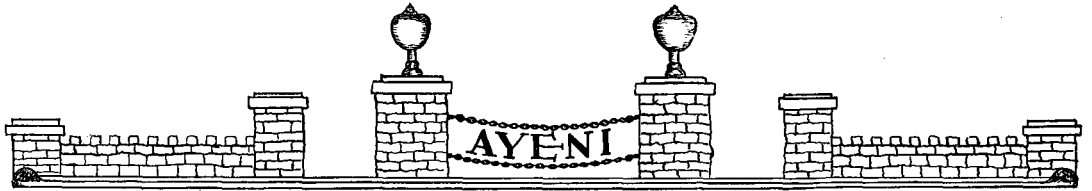
R. C. MARTIN
Hogansville, Georgia
Physical Science
Supreme Circle Club; Le Cercle Fran-
cais; Sphinx Club; Varsity Football
'27, '28, '29

GLADYS MOORE
Gallatin, Tennessee
Home Economics

ROBERTA E. NEAL
Morristown, Tennessee
English
Sigma Phi Psi

JOHN L. OUTLAW
Brownsville, Tennessee
English
Phi Beta Sigma; Anderson Billy Hale,
Jr., Club; Y. M. C. A.





BENJAMIN H. PASTER
Jackson, Tennessee
 Social Science
 Eight Links; Y. M. C. A.

E. EXELL PITTS
Pontiac, Michigan
 Physical Science
 Supreme Circle Club; Orchestra; Le
 Cercle Francais; Sphinx Club.

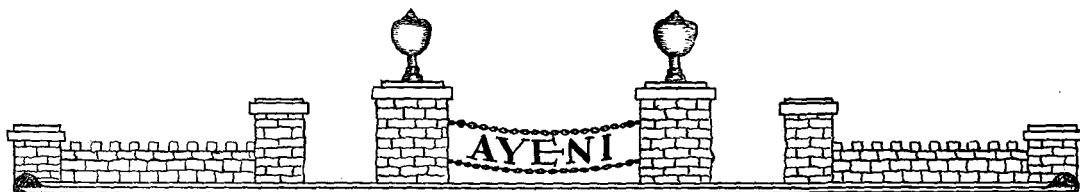
MYRTLE L. ROBERTSON
Whiteville, Tennessee
 Home Economics
 Pi Kappa Nu

ROSA A. ROBINSON
Memphis, Tennessee
 Commerce
 Delta Tau Iota; Y. W. C. A.; Pi Kappa
 Nu

ROBERT J. SMITH
Dyersburg, Tennessee
 Physical Science
 Kappa Alpha Psi; Eight Links; Dramatic
 Club.

CAROLEEN M. STEVENS
Memphis, Tennessee
 Social Science
 Delta Tau Iota; Y. W. C. A.





MARY EVANGELINE STEWART
Nashville, Tennessee
English

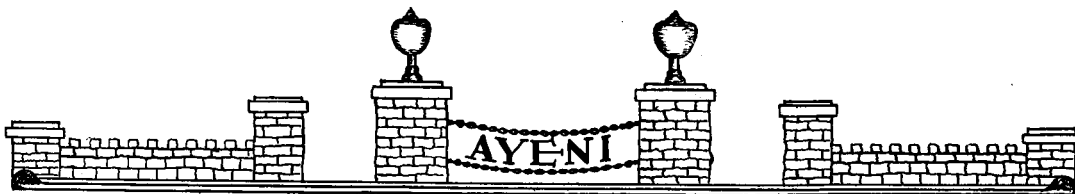
ARCHIE MAE STEWART
Nashville, Tennessee
English

OLLIE STEWART
Nashville, Tennessee
English
Phi Beta Sigma

HALTON WILLIAMS
Clarksville, Tennessee
Manual Training
Omega Psi Phi; Eight Links; Y. M. C. A.

HAZEL WILLIAMS
Clarksville, Tennessee
Home Economics
Swastika; Y. W. C. A.; Pi Kappa Nu

IDA M. YOUNG
Nashville, Tennessee
English
Alba Rosa; Pi Kappa Nu



Class History

CHAPTER I STONE AGE

On October 1, 1926, we arrived in Nashville. Some of us caught a street car which was going in the wrong direction, thus causing us to pay two fares, while others of more ambitious mind taxied out to the Campus. With wildly beating hearts, we climbed the stony infested Hill to Castle Heights, where all of our money was taken by a voracious Cashier.

Green we were indeed, but the full realization of this fact did not dawn upon us until our first meeting with Mr. G. W. Gore, Jr., in English 101. We will always remember the first theme that he assigned, "How I Tie My Shoes". Many of us did not know how difficult this was to do until we were required to write about it.

We were met with malicious glee by a certain band of wild beings called "Sophomores" who, because of their fierce taste for Freshman blood, pounced upon us day and night, causing us to suffer great things in our hearts. Between the mental torture of the Instructors and the physical punishment of the Sophs, we were in torment for the first year of our college career.

The two outstanding projects of the class for the year were the Freshman-Sophomore Prom and the Class Play.

CHAPTER II IRON AGE

We entered the second year of college life with a better conception of what a college is for, and a more complete knowledge of what we could do to make our Alma Mater the best in the land. We were filled with self-importance and spent most of our time showing the "Crabs" just how important we were. This was displayed even to the Upper Classmen, many of whom we tried to imitate.

During this year many members of the class distinguished themselves. The statesmanship of Mr. Martin; the beautiful voice of Miss White; the brilliancy of the Misses Leavelle (Dorothy and Katherine), Robertson and Bogen; the ability to lead that Mr. Clem possessed; and the athletic prowess of Messrs. Williams, Glass, Brown and Martin all came to the foreground.

The most outstanding social affair of our second year at college was the Annual Frosh-Soph Prom. The Crabs made this a splendid affair, and it was enjoyed by all who were present.

CHAPTER III BRONZE AGE

"When I was a Crab, I spake as a Crab, I thought as a Crab, I acted as a Crab, but now that I have become an Upper Classman, I shall put away Crabbish things." This seemed to be the motto of the class as we started our Junior year. We were all full of confidence, each of us believing that he could uphold the dignity of his position, and all striving for the one cherished goal—Seniority.

Most of the prominent students of the campus during this year were members of the Junior Class. Among the most outstanding was Mr. Clem, who was entrusted with the leadership of the class.

The Junior-Senior Prom given on May 25, 1929, was the most spectacular affair of its kind in the history of the institution.

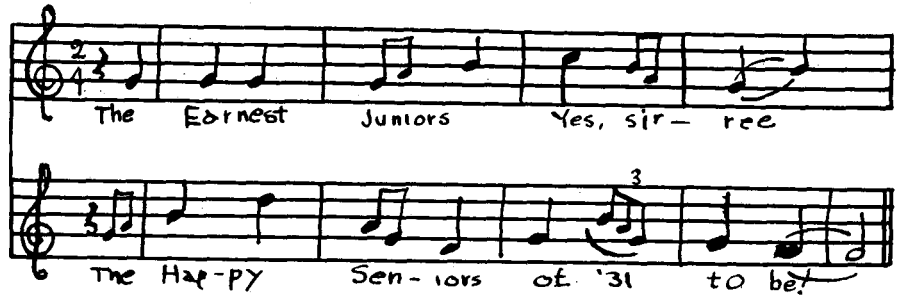
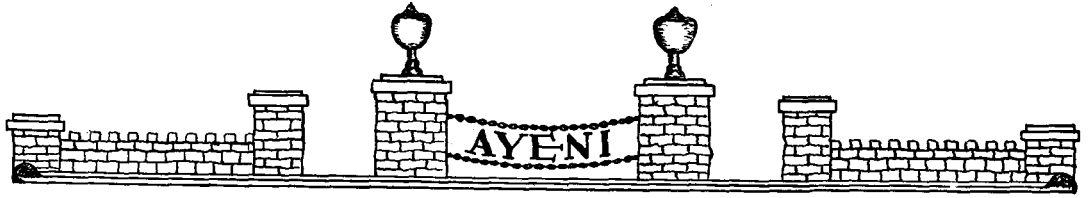
CHAPTER IV GOLDEN AGE

In the beginning of our Senior year, we moved about the campus as is becoming those who have successfully, or, unsuccessfully, mastered the first three years of Crabdom, Wise Fcoldom, and Mirthdom. Now we are on the last lap of our journey through the Land of Learning after having spent the first three of our four years in this City of Knowledge.

At the conclusion of these four years of training comes the severing of friendly ties, firmly established through years of intimate contact. Roommates, classmates, club sisters, club and fraternity brothers will go their different ways and endeavor to make their contributions to the good of humanity. As the years go on and we are far apart, may the memory of past associations give us a more hopeful aspect of the future. And last comes the feeling of uncertainty which accompanies the departure from the known to the unknown. May each of us go his different way, always remembering the four years spent at his Alma Mater, remembering the friendships and associations of kindred minds and hearts and souls, hoping to be united once again in a School from which there is no parting.

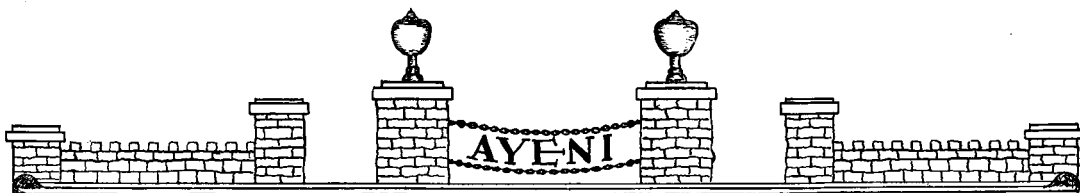
ROBERT J. SMITH, *Historian*.





JUNIORS





The Junior Class

COLORS
Old Rose and Silver Gray

FLOWERS
American Beauty Roses

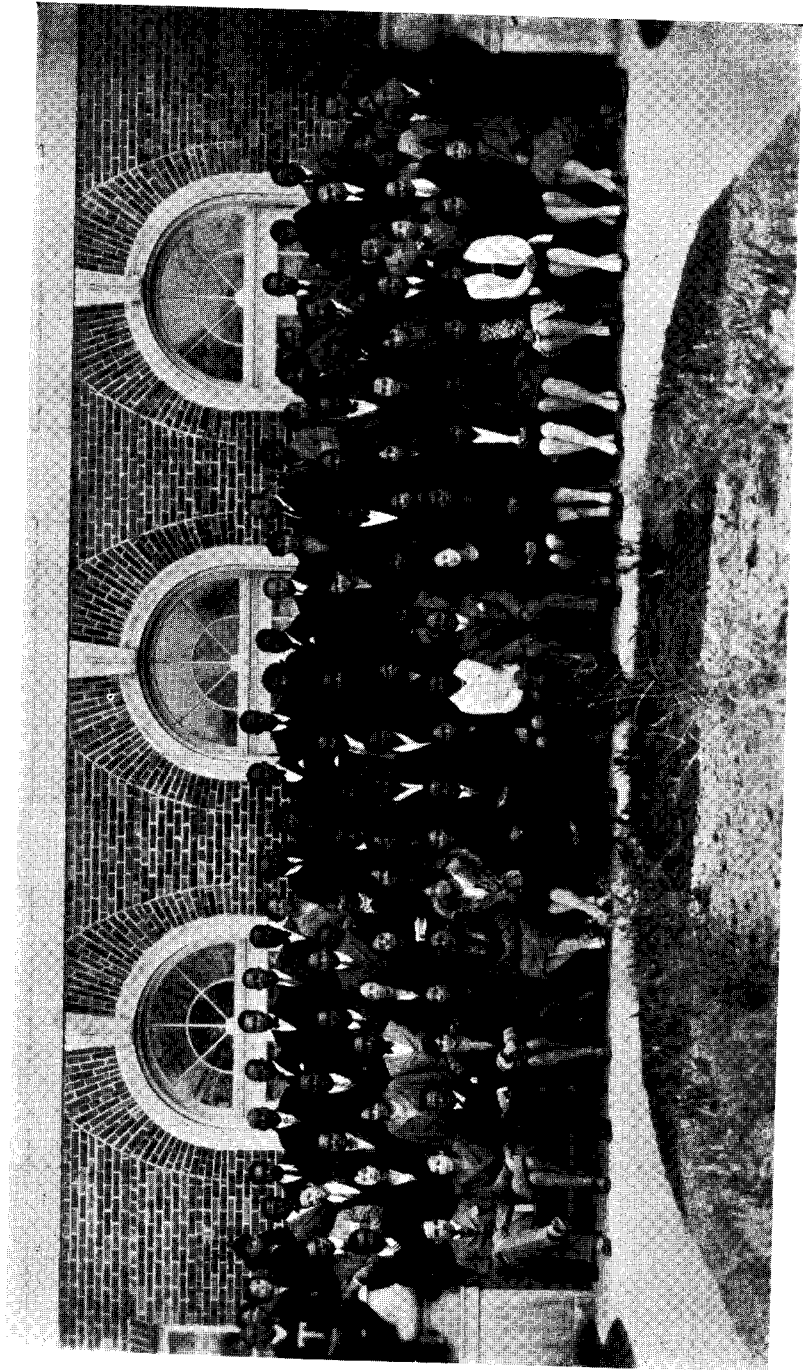
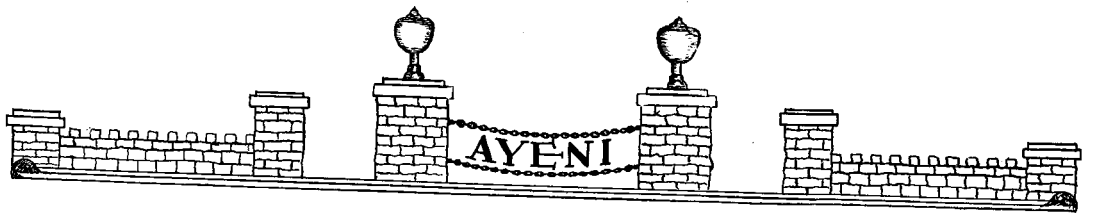
OFFICERS

NED RAWLS	<i>President</i>
CLINTON DERRICKS	<i>Vice-President</i>
CORALIE DAVIS	<i>Secretary</i>
BERNICE CONYERS	<i>Ass't Secretary</i>
CLARENCE CROOK	<i>Treasurer</i>
SIRILDA DUNGEY	<i>Editors</i>
JAMES TAYLOR	

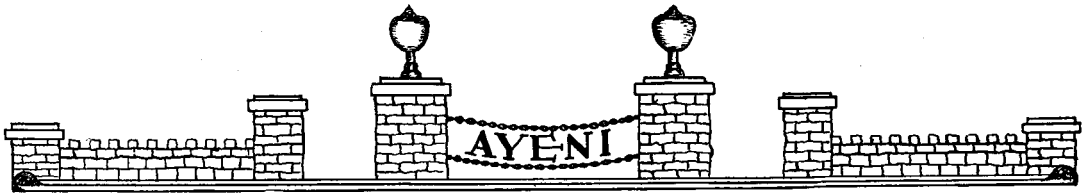
CLASS MEMBERS

ADAMS, JAMES EUCLID	MCCRORY, ALINE GERTRUDE
ANDERSON, ANNABEL	McFALL, MATTIE
ANDERSON, NANNIE KATHRYNE	McNARY, JUANITA
BAKER, PHINETTA AGNES	MARSHALL, NANNIE
BEARD, CAROLYN CLARK	MATTHEWS, MARGARET
BLACK, ADELINE GENORA	MAYBERRY, SOPHRONIA D.
BRIDGEFORTH, JOHN WATKINS	MEADORS, OBITT R.
BROWN, ETHEL	MORGAN, GENNIE MAE
BROWN, JOHN HENRY	MORRIS, EDDEAN THEODOSIA
BROWN, KATHLEEN ELSIE	NEBLETT, EGBERT ALEX
CANADA, VELMA LOUISE	NEWBERN, GEORGE ASERLEE
CHEAIRS, ROSS BRUCE	ORNDORFF, FRANK BURTON
CHILTON, LEO FLETCHER	PINKARD, ISAAC YOUNG
CLAY, KURTYS LEMONT	PUGH, ERNEST THOMAS
CLAYBORNE, SCOTT	PURYEAR, ADMIRAL DEWEY
CLEAVES, LURNE PRICE	PRYOR, MARY VIRGINIA
CONYERS, FRANCES BERNICE	RANDALS, RUTH CATHERINE
COX, THOMAS HAMPTON	RAWLS, NED MONORE
CRAWFORD, EDITH AUGUSTA	RICH, ROWENA MAE
CRENSHAW, HOMER ALLEN	RICHMOND, MILDRED LILLIAN
CROOK, CLARENCE VIRGUS	RICKS, LILLIAN BEATRICE
DAVIS, PHILIP TEEKROE	RIVERS, TETIE ALMA
DAVIS, WILLIE GENERAL	ROBERSON, THOMAS HANNIBAL
DERRICKS, THOMAS CLINTON	ROBINSON, REID MINTER
DOBBIN, SAINT FOSTER	ROGERS, FANNIE ELIZABETH
DOWDY, CHAS. AVERY	ROSS, VALERIA AUDRELYN
DUNGEY, SIRILDA ELIZABETH	SMITH, WEBER ROSCOE
EDMUNDS, JOSIE ALLEN	STEELE, ANDREW JACKSON
FENWICK, FANNIE HENRIETTA	STEPHENSON, SARA ELIZABETH
FLOYD, ANNA PRISCILLA	SUMMERS, LUCILE
FLOYD, CORDELIA ADELAIDE	TAYLOR, JAMES FRANKLIN
FOREMAN, HENRY JACOB	THORPE, FRANK NORRIS
FRIERSON, LUTISHA	TODD, ODELLA MAE
FRIERSON, WILLIAM G.	TOTTY, SAMUFLA VIOLA
GREENLAW, CLARA ELIZABETH	TRIPLETT, RUBY JEROLINE
GRIFFITH, HERMAN COUNCIL	VAN PELT, ADA LUCY
GRINTER, LULA MAE	WALLACE, ELSIE HILL
HARRIS, WILLIAM	WATKINS, SAMUEL
JOHNSON, OLIVER	WELLS, CLAUDE NATHANIEL
JONES, SAMUEL E.	WHITESIDE, EMMA HUGH
JOYCE, LULA CORNELIA	WOODS, MARY ELIZA
KEITH, MODENA	CARTER, HELEN GOULD
KILGORE, LOIS ELIZABETH	HARRISON, VIOLET GERTRUDE
KING, GRACE MOYSE	JONES, MARY LOUISE
LACY, GERTRUDE	McCRAE, VIOLA ESTELL
LACY, WILLIAM DOUGLAS	MEYERS, HARRIS S.
LEE, CAIN	PUGH, HAZEL LEE
LYTTLE, HULDA MARGARET	TURNER, ANNA LEE
McCLAIN, ALICE MARIE	WITHROW, THOS. EDWARD





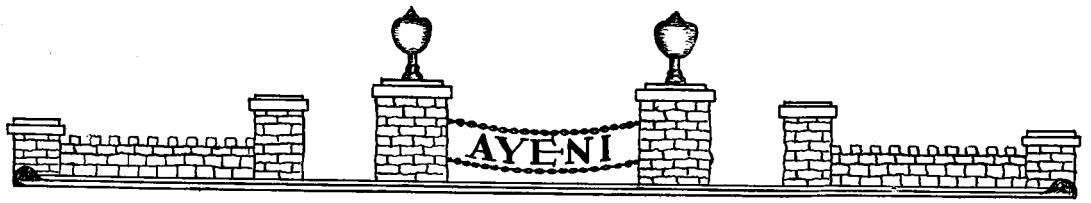
The Junior Class



Tennessee State College Fight Song

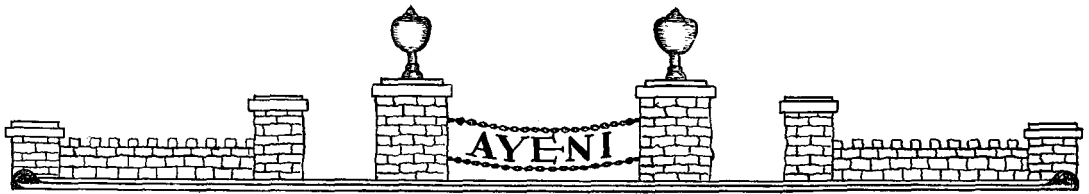
Fight, you State College!
Walk right through that line!
With our colors waving,
We can't fall behind!
U——Rah! Rah!
Fight, you State College!
Charge for victory!
Spread forth the fame of old Tennessee's name.
Fight! State College!
Win that game!
(Whistle)
Fight! State College! Fight!
(Whistle)
Fight! State College! Fight!
Hit 'em hard!
Hit 'em low!
Fight! State College! Fight!





SOPHOMORE NORMAL





Sophomore Normal Class

LAVETTA MURRAY	President
MARY A. BROWN	Vice-President
PEARL HENDERSON	Secretary
NELLIE J. FITCH	Assistant Secretary
EARLINE MORRIS	Treasurer
SALMON AND NILE GREEN	Class Color
PINK CARNATION	Class Flower
"THRU PERSEVERANCE, WE CONQUER"	Class Motto
MISS DOROTHY BURDINE	Adviser

ZENOBIA ANDERSON

As high as heaven is above us,
Her voice is deeper than the sea.

MARY ALICE BROWN

She is so just and prudent,
Afraid of losing her soul.

JOHNELLA DICKERSON

The qualities of a lady in character,
Sincerity, charm, she has them all.

NELLIE JUANITA FITCH

Heavens, how desperately do we adore
Thy winning graces!

PEARL HENDERSON

Adept in aesthetic dancing,
With a voice that thrills the soul.

JEWEL HUDDLESTON

A heart too pure for taint or vice
But capable of the deepest love.

EMMA JONES

Man hath no charms for her,
Her destiny is a convent.

GLADYS JONES

Sincere, devout and amiable,
Lifting as she climbs.

EUGENIA LANDER

Though much is suspected of me,
Nothing proven can be.

GRACE LEAGUE

She doth those small things
Which most leave undone or despise.

NANNIE MILLER

Over all the campus she nods and smiles
To every handsome man.

EARLINE MORRIS

One glance of her bright face
Sears a picture on the brain.

LAVETTA MURRAY

Enthralled by vain affections,
But resolute in her will.

MAMIE PEDEN

Such feelings of her own she has
Which inferior souls may never know.

LOTTIE SPRINGS

To know her is to love her,
Love but her and her forever.

AGNES SOLOMON

Pierced by Dan Cupid's arrow
Her only thoughts are of love.

MARVEL STEWART

One who never turns his back
But continually marches onward.

SUSIE WATKINS

Nature made her what she is
And never made another.

LILLIAN WAGNER

She is destined to rank first
In the field of elocution.

LUCILE WILLIAMS

In spite of all the learned have said,
I still my old opinion keep.

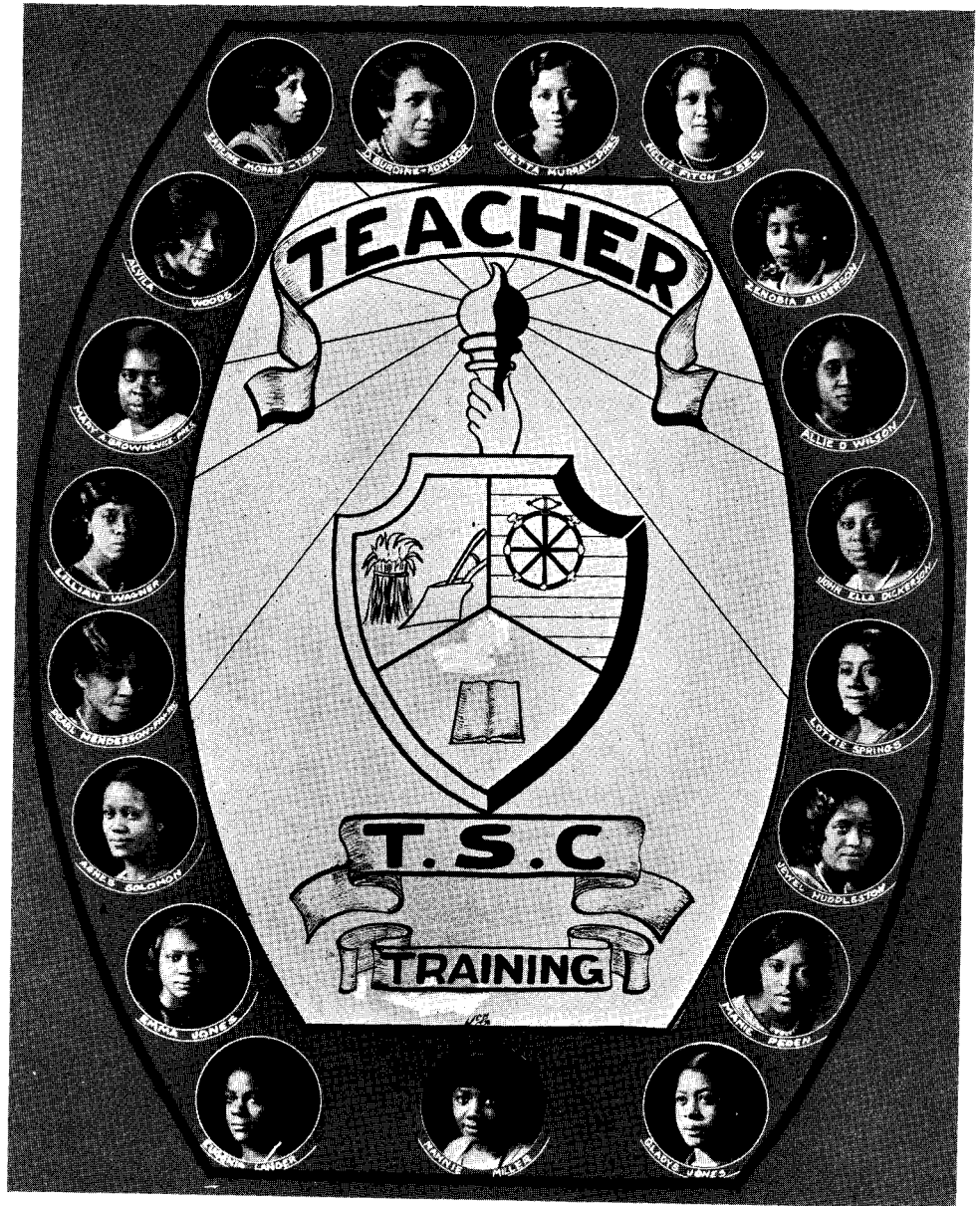
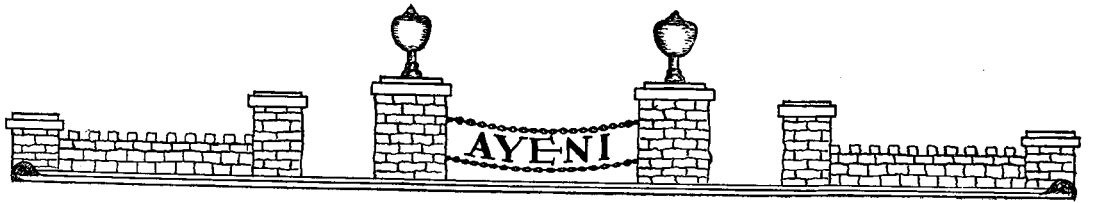
ALLIE D. WILSON

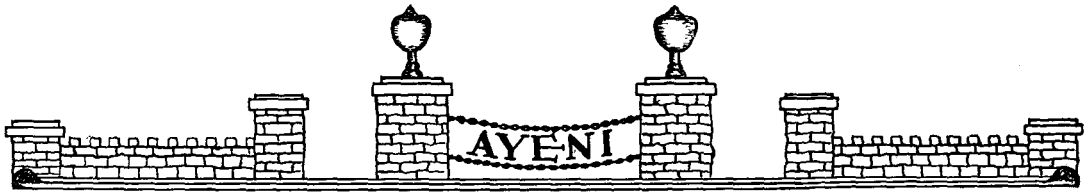
A manly form at her side she saw,
And joy was duty and love was law.

ALVILA WOODS

Soft as the dew from heaven descends,
Her gentle accents fall.







Will-O'-The-Wisp

(SOPHOMORE NORMAL CLASS PROPHECY)

One day, as I was walking through the garden thinking of the future of the Sophomore Normal Class, I stepped on an odd-looking leaf. I did not know what it was. All at once I had a queer feeling. My feet began to step high and higher, and when I came to myself I was in a new world, the Future World.

As I wandered down Fifth Avenue in New York, I saw the advertisement: "Don't Miss Hearing Madame Dahugashvili Conseedui, at the Metropolitan Theatre in a contralto recital". Imagine my amazement as I adjusted my opera glasses and beheld none other than our own little Zenobia Ruth Anderson.

Upon leaving the theatre, I walked down to the dock and saw Miss Mary Alice Browne boarding the American steamer "Leviathan", for South Africa, to Christianize the Hottentots.

Having been attracted by a smart sport outfit, I dropped into the La Petite Modiste Shoppe and found the proprietresses, Misses John Ella and Murmer Lee Dickerson.

As I passed a newspaper stand I saw the following headlines: "Living A Life of Sacrifice". Although I could scarcely read the fine print, I finally made out this: "In the Heart of Sahara Desert", Misses Gladys and Emma Ophelia Jones.

Suddenly I heard a scream. Leaning forward, I saw an ambulance stop at the curve, and out jumped two white-capped nurses, Misses Nellie Fitch and Eugenia Landers.

Having walked ceaselessly the entire day, I became aware of a stabbing pain. Glancing upward, my eyes beheld a sign, "Dr. O. C. Wynn, Physician and Surgeon". I hastened up the steps and found that he was the husband of our classmate, Miss Earline Morris.

Dr. Wynn gave me a prescription, which I carried to the Northside Pharmacy and found that the owners were Dr. and Mrs. A. A. Moss, Mrs. Moss being Miss Lillian Wagner.

I wandered down the street farther and met Mrs. Neil Rice, who was formerly Miss Lottie Springs, with her three children.

While visiting St. Simon Island, I entered St. Mary's Convent. There I saw two very familiar faces, Misses Alvila Woods and Mittie Patillo, having entered the convent because of their disappointment in love.

The scene changed. I saw Madam Evanti, gorgeously dressed, on her way to her studio for the afternoon rehearsal. She was now an aesthetic dancer. This person was Miss Pearl Henderson.

I decided that I would go into one of the colored banks and, behold, who did I see as president but Mr. Marvel Stuart. Well, it wasn't very surprising, because he was always such a quiet businesslike man. I do hope that they can understand what he says.

Glancing over the society column of the Chicago Bee, I saw that Lavetta Murry was in the city, just back from her third trip around the world.

Being rushed to attend a formal dance, I entered the Fleur de Lis Beauty Parlor for a permanent wave, and found that Miss Susie Watkins was the proprietress, also an authority on cosmetics.

The next day I visited Bomous Aviation field, and every one was excited over the "hop off" of the skilled aviatrix, Miss Agnes Solomon, who was leaving on a non-stop flight to Czechoslovakia.

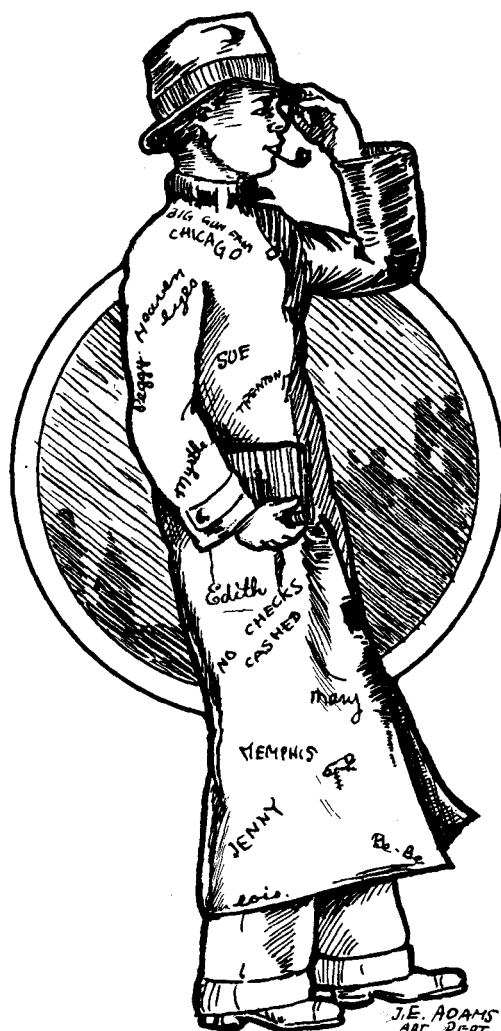
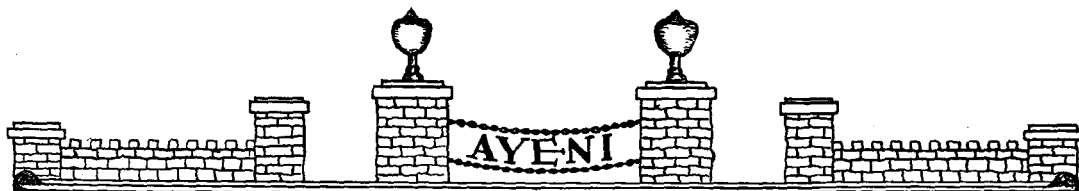
As my tour was nearing its end I found Misses Nannie J. Miller and Allie D. Wilson halted in the midst of several opinions as to which man to choose.

Then I came back to dear Old Tennessee State College to see if any one had settled there. True enough, I found many who loved their dear Old Tennessee so that they would never leave its soil. I first went to Hale Hall, and on entering I heard a voice saying, "Now, now, young ladies, it is 10:30. All lights out." To my surprise it was Miss Jewell Huddleston, Dean of Women. The next day I visited the Library and heard some one saying, "Stop talking or pass right out". I looked up and saw that it was Miss Marguerite Townsend. I then went to the primary department, and instead of finding Miss Burdine I found Miss Mamie Peden supervisor of the primary grades.

At 12:30 o'clock I went to the Cafeteria and enjoyed a delicious lunch prepared by Miss Pearl Russell.

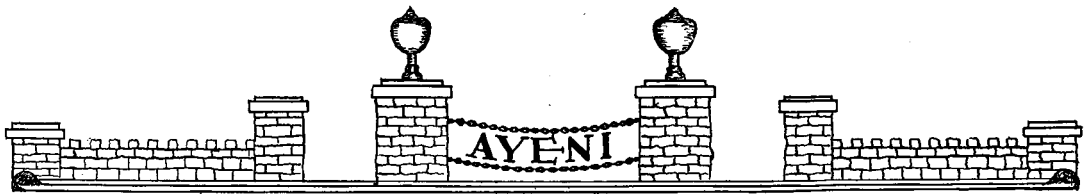
Then fate would not allow me to stay in the future world any longer. I had to return to the present. But thanks to her that she allowed me to stay long enough to see the members of the Sophomore Normal Class.





SOPHOMORES





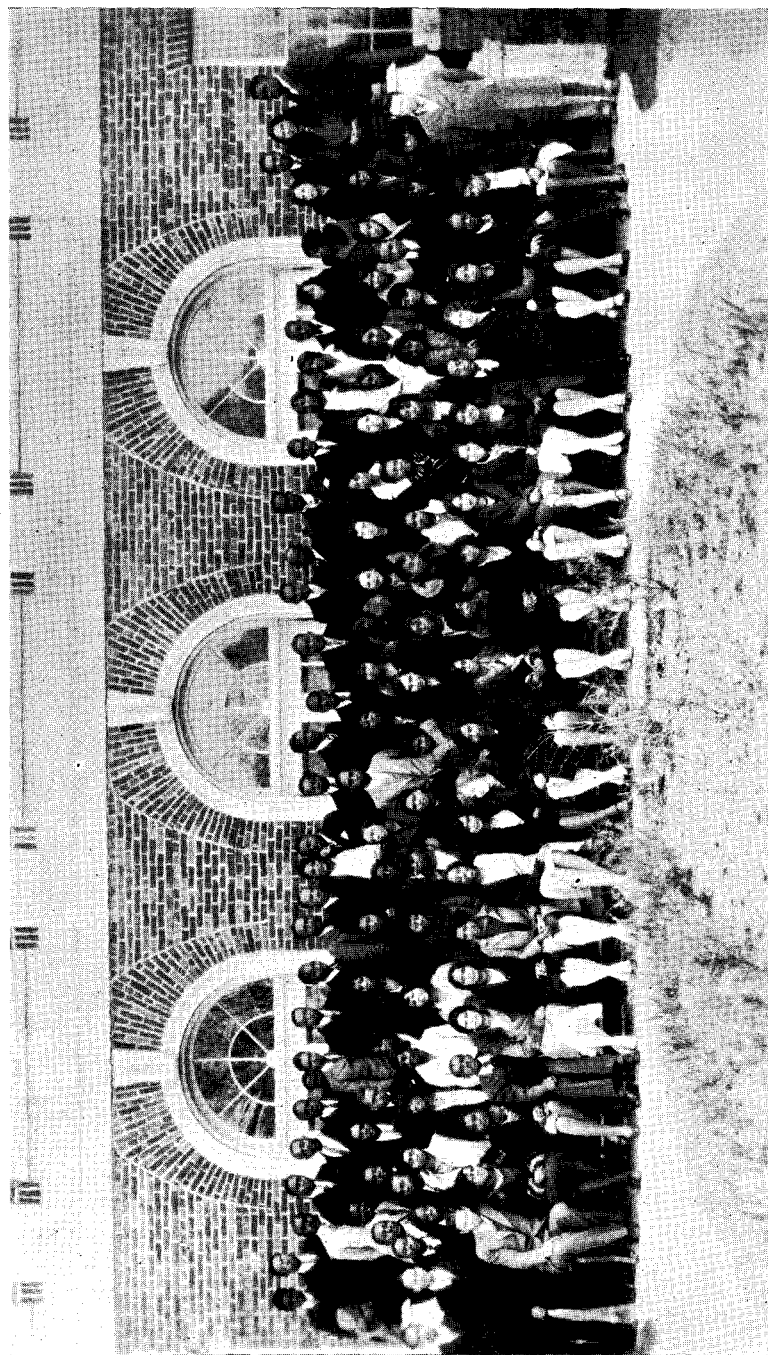
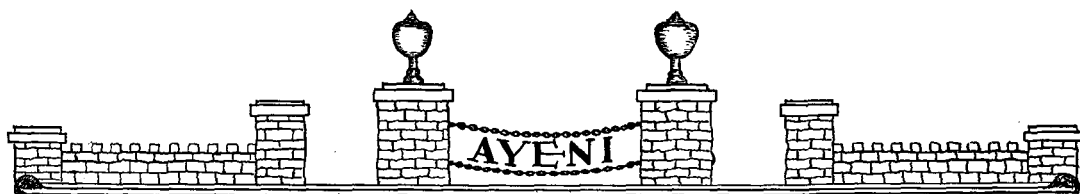
Sophomore College Class

OFFICERS

WILBUR CHANEY.....	<i>President</i>		
WILLIAM G. ANDERSON.....	<i>Vice-President</i>	JAMES E. SLOAN.....	<i>Treasurer</i>
LILLIE BELLE FRANKLIN.....	<i>Secretary</i>	MACK YOUNG.....	<i>Sergeant-at-Arms</i>
ETHEL E. ROLE.....	<i>Ass't Secretary</i>	PROF. PAUL F. MOWBRAY.....	<i>Adviser</i>

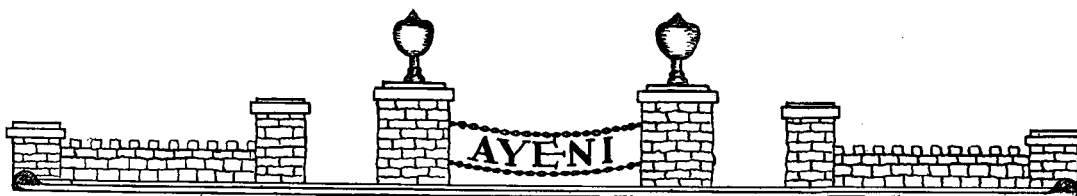
ACTON, RANDALL ELMER	GATEWOOD, GLADYS VEATRICE	OWEN, ANNIE CLARA
AIMERY, HERMAN CLAY	GLANTON, MYRTLE LEIGH	PARKER, BERTHA RAYNE
AIMERY, ODESSA MILLITINE	GREEN, WINDARD HOMER	PARKER, NANNIE MAE
ANDERSON, THEODORE R.	GRIFFITH, MATTIE ELIZABETH	PARKS, ETHEL GERALDINE
ANDERSON, WILLIAM GARRISON	HALCOMB, HELEN	PARRISH, LOUISE
ARNOLD, EDNA ELLENA	HALE, WILLIAM JENNINGS	PATILLO, MITTIE ARLANDA
BABBAGE, MYRTLE FENWICK	HAMILTON, ERNEST ALFRED	PATTERSON, JOHN L.
BAILEY, ROGERS PARKS	HAMILTON, MARGARET LOUISE	PEPPERS, ANNIE BELLE
BASS, JENNIE LEOLA	HARRIS, EUGENE EDWARD	PORTER, LANDON CARSON
BENNETT, GERALDINE PHILLIPS	HARRIS, FRED LINCOLN	PORTERFIELD, LETHIA JAMES
BILLS, THOMAS HENRY	HARRIS, MARVIN	RADFORD, ROBERT LEE
BOHONNON, RICHARD GILLUM	HARTSFIELD, THEODORE ROOSEVELT	RANSOM, EDITH HULGIA
BOONE, WILLIE MANTELLE	HENDERSON, ELLA LOUISE	REED, GERTIE LEE
BOYD, LEE ROY	HILL, JOHNNIE A.	REEVES, WILLIAM HOWARD
BRACKEN, HERBERT RUSSELL	HILL, REBECCA JANE	ROBERTS, MYRTLE LEOLA
BRADSHAW, CLYDIE MAE	HOGG, WILLIAM FRANKLIN	ROBINSON, CHARLES CLAYTON
BRANHAM, JULIA GERTRUDE	HOWELL, THEODORE MARIE	ROBINSON, WELLS
BRIGHT, KATHERINE AMANDA	HUNT, KATHERINE	ROLE, ETHEL ELIZABETH
BRIGHT, WILLIAM THOMAS	HYDE, MAXWELL	RUFFIN, JOSIE MARIE
BRITT, L. D.	HYDER, ARMENTA FLORENE	SIMMONS, DIMPLE
BROOKS, GEORGE WASHINGTON	ISAIAH, THELMA ELIZABETH	SLEIGH, CHARLES RICHARD
BROWN, EUGENE D.	JACKSON, BESSIE DORIS	SLOAN, JAMES WM.
BYAS, JOHNNIE MAY	JACKSON, ERNESTINE ELSIE	SCRUGGS, RAMON STEWART
CALDWELL, NANNIE MAE	JACKSON, ESTHER BEATRICE	SKINNER, MYRA WILLIAMS
CAMPBELL, EDDIE LOUISE	JACKSON, NORRIS COLUMBUS	SLOAN, ZELMA
CAMPBELL, ETHA MAE	JAMES, WILLIE BEE	SMITH, ROBERT DANIEL
CAMPBELL, MARGARET ROSE	JEFFERSON, DAISY EMILY	SOLOMON, AGNES ESTELLA
CARR, MAE ELIZABETH	JOHNSON, CALVIN RUSH	SOUTHALL, FRED OSTRANDA
CATO, ISAAC HAMILTON	JOHNSON, ERNESTINE MILDRED	SUGGS, ISAIAH
CHANEY, WILBUR	JOHNSON, RUTH DOLORES	SUMMERS, SALLIE DOLORES
CLARK, ELIZABETH MAI	JORDAN, LULA PEARL	SWIFT, VETRICE ABIGAIL
COLEMAN, HARRY THEODORE	KELLEY, LOTTIE LEE	TAYLOR, KATHERYN E.
COLEMAN, OTTIS DEAN	KENDALL, SUSIE CORBIN	TEAGUE, BENNIE WYNNS
COLLIER, FREDDIE FAY	KINCAIDE, CLYDE JONES	THOMAS, MAI CLAIRE
CRAWLEY, LILLIAN MARIE	KING, ANNIE BELL	THOMAS, RUTH EDITH
CRAWLEY, WILLIAM EDGAR	LANIER, LUCILLE	THOMPSON, RICHARD BRUCE
CRENSHAW, WAVERLY DAVID	LEWERS, LUCIUS CURTIS	TISDALE, MABEL MILDRED
CROTHWAIT, EVELYN MARIE	LOVE, VASSAR CURRIN	TODD, AMANDA LOU
CURRY, MABEL JULIA	LEE, LIDA BELL	VAUGHN, JOSEPH EWING
DAVIS, CORALIE BEATRICE	LEWIS, JOHN THOMAS	VAUGHN, MARY ELLEN
DICKERSON, JOHN ELLA	MCCULLOUGH, LURLIE CLEOLA	VAUGHN, ROY ORLANDO
DICKERSON, MURMER LEE	MCDONALD, PEARLINE GLADYS	WATKINS, GEORGE PEACHMAN
DOBBIN, NERISSA CAROLYN	MALONE, JOHN VERTRESE	WHARTON, MILDRED ELIZABETH
DODSON, KATHRYN SOPHRONIA	MATHIS, CHARLES BENNY	WILLIAMS, EASTER MARSHALL
DONALDSON, LEMMIE COBB	MEREDITH, AMANDA ELLA	WILLIAMS, JOHN WESLEY
FARRIS, COLUMBUS RUDOLPH	MILLER, THOMAS LOVELL	WILLIAMSON, OLA ELIZABETH
FERGUSON, ROY LEE	MOORE, ESTELLA ROBERTA	WILLIS, WILLIE WALTER
FINLEY, ROBBIE MAE	MORRISON, JOHN WESLEY	WISEMAN, IRENE EVELYN
FLETCHER, THEODORE R.	NEAL, CHARLES HENRY	WOLFE, MARY MAGDALENE
FORD, GRACE MYRTLE	NEAL, EDNA JULIA	YOUNG, MACK L.
FRANKLIN, LILLIE BELLE	NORTHCUTT, INEZ	





The Sophomore Class





To a Roadster

By WILL HALE, JR.

Yesterday you snubbed me,
As you raced by, long, low, and yellow,
Reeling, rocking, leaping, bounding,
At a hundred and ten.
Long as eternity,
Low as the valleys,
Wide as the prairies,
Yellow as gold,
Bright as the sun,
New, shiny, arrogant, bold;
Strong and coarse.

Your commanding nose held high,
Your rumble-seat hanging on impishly, perilously
behind,
Your motor roaring like thunder,
Your gigantic red wheels hugging the road,
Your body shivering with the joy of going places
and doing things,
Your steering-wheel holding one hand of a youth,
As proud as you.
With black, curly hair; soft, grey eyes;
A coonskin coat.
Tall, handsome, reckless, rich,
A Silly God.

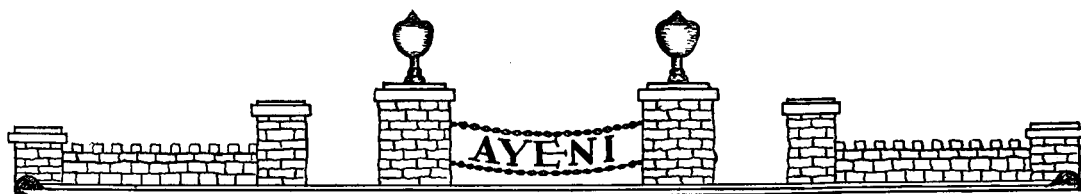
His other hand was holding a girl
As fast as you.
Small, cute, red-headed,
Drunk with fifty-dollar wine and million-dollar
love.

You swerved at me,
Teased me:
I jumped.
You tilted miraculously,
And passed on the other side,
Shunned me, and chuckled to yourself,
At your daring and trickery.

You slung your twenty-five-thousand-dollar self
by me,
And hurled impudent dust in my eyes,
Hateful, defiant, sophisticated.

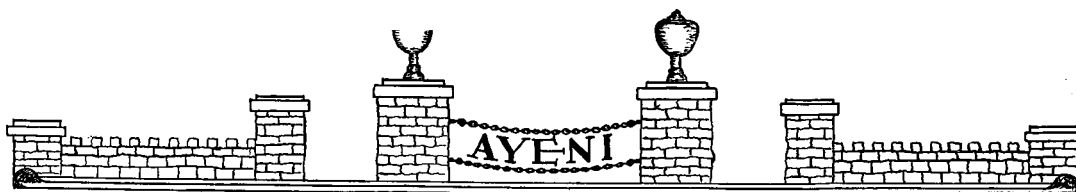
Now I gaze upon you here,
Broken, tangled, ground into bits,
At a hundred and ten.
I know now
That I would rather be myself
Than you, or that curly-haired, grey-eyed youth





FRESHMEN

1930



The Freshman Class

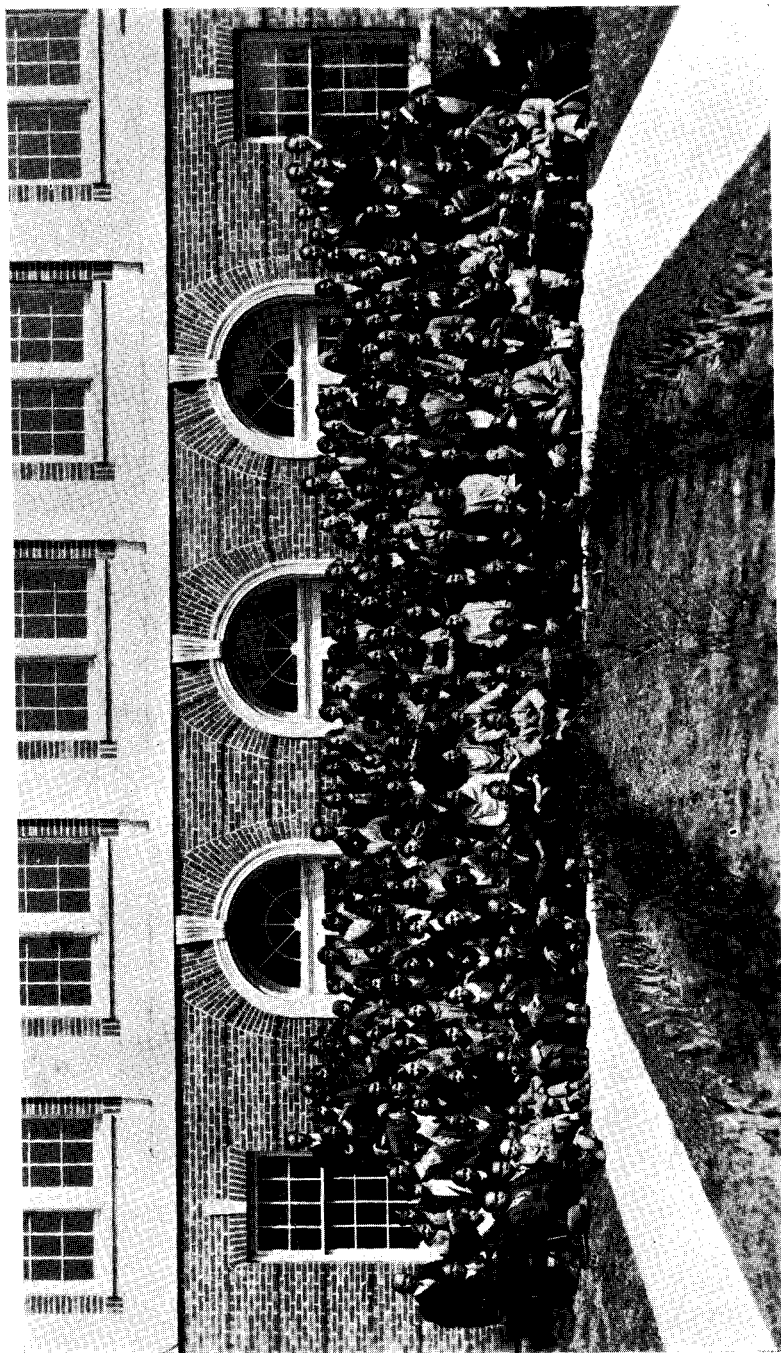
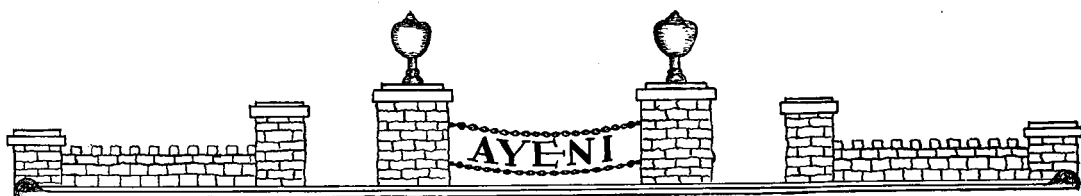
OFFICERS

OLIVIA LANE.....	<i>President</i>
JAMES COLLINS.....	<i>Vice-President</i>
THELMA SMITH.....	<i>Secretary</i>
PAULINE WOODARD.....	<i>Ass't Secretary</i>
A. D. KNOX.....	<i>Treasurer</i>

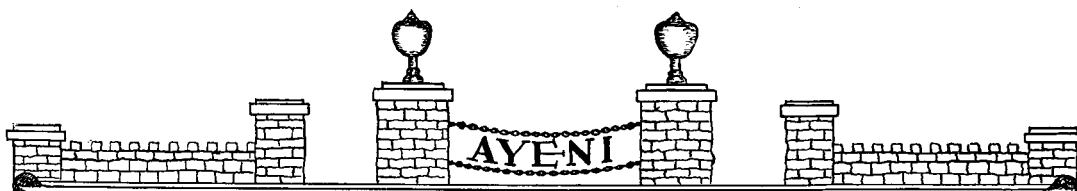
ALEXANDER, CHRISTINE EDITH
 ALEXANDER, RHOBELIA FLORETTA
 ALLEN, RUTH EVELYN
 BACON, ELOISE LEONAL
 BACON, EMMA LOUISE
 BAKER, MARY ELIZABETH
 BANKS, GUSTINE LULA
 BANKS, P. BELLE
 BARBOUR, LILLIAN LEWIS
 BARNES, EVA MARIE
 BARNES, HENRY CLAY
 BASS, WILLIAM THOMAS
 BEAL, LEVI
 BELL, WILLIAM KELCY
 BILLUPS, MARY LOUISE
 BISHOP, DAVID DEMOSTHENES
 BLAIR, THERESA E.
 BOND, EMMA BELL
 BOYLAND, CORNELIA
 BRADFORD, WILLIE GERTRUDE
 BRADLEY, CALLIE ODIS
 BRADSHAW, JESSE BERNARD
 BRANCH, ROBERT FLETCHER
 BRAXTON, IONA ELIZABETH
 BREWER, KITTRELL BERNARD
 BROACH, ADDIE MAE
 BROWN, ALEXANDER RANDOLPH
 BROWN, JULIA MARY
 BROWN, LUELLA
 BROWN, OLIVIA GENEVIEVE
 BUCHANAN, JOHN WESLEY
 BUCKNER, SHERWOOD
 BUMPHAS, JULIE LEE
 BURRIS, MARGARET SANFORD
 BUTLER, WALTER WALLACE
 BYNUM, ARTHUR FOUNT
 CANSLER, VERSA LAVERSOER
 CARTER, MATTIE PEARL
 CHADWELL, BERTHA L.
 CHAVER, FLORA JENET
 CHEATHAM, PEARL PAULINE
 CLARK, DAVID LEE
 CLARK, GUSSIE LEE
 CLARK, JENNETTA MARGUERITE
 CLAYBORNE, CHARLES EDWARD
 CLAYBROOK, JOSEPHUS
 CLAYTOR, ALEXANDER B.
 COLLIER, JUANITA
 COLLINS, JAMES UNDERWOOD
 COOK, SYLVESTER
 COOKE, CLEMIE MAE
 CUMMINGS, ROBERT CARL

DANIELS, FANNIE MAE
 DANIEL, LOIS HENRIETTA
 DARKE, SUSIE MAI
 DAVIS, STANLEY WHITE
 DENNIS, RHOENA EDNA
 DISMUKES, LOVIE VIVIA
 DOCKERY, JUANITA MARIE
 DRAKE, GEORGE FELIX
 DUNFORD, ELLEN LOUISE
 ELLIOTT, BLANCHE JANE
 ESTUS, BEN BERNARD
 ETHERLEY, HELEN
 EVANS, IDA BEATRICE
 FARMER, KATHERINE MARTIN
 FISHER, AARON ALVIN
 FLOWERS, EFFIE RUTH
 FORD, HAZEL VERNICE
 FOSTER, ALINE MARIE
 FOWLER, LAURA BRUCE
 GAINES, PET MAE
 GAINES, WILLY CHRISTINA
 GLANTON, LUTHER THOMAS
 GOLDEN, BEULAH JACKSON
 GOODALL, EMMA CORNELIA
 GREEN, ALPHA OMEGA
 GREEN, GARNZALIOUS G.
 GREEN, MILDRED LEAMA
 GREER, ALBERTA SLEIGH
 GREER, TEE STEWART
 GRIGGS, JULIA ROBERTA
 GRIMES, ELLA BEATRICE
 HALL, ALFRED JOHNSON
 HALL, FRED LAWRENCE
 HARDY, CECIL HENRY
 HARRIS, ADDIE BROWN
 HARRIS, LAWRENCE HANNIBAL
 HEMP, ADRIAN EARL
 HEROD, SAMUEL
 HERRING, ROOSEVELT
 HILL, DORIS OTHA
 HILL, JESSIE MAE
 HOLMES, MATTIE ELIZABETH
 HORTON, KELTON JODIE
 HOWELL, MATTIE GENEVA
 HUDSON, ARIZONA ELIZABETH
 HUNTER, SADIE MAI
 IVY, CLARA REGINA
 JACKSON, ANNA
 JAMES, CHRISTIANA OZETTA
 JASPER, ADA BELLE
 JENNETTE, CORRINNE McLEMORE
 JOHNSON, GLADYS CORINNE





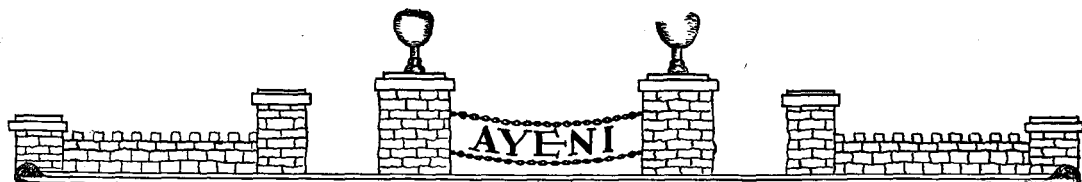
The Freshman Class



JOHNSON, VINA CHORLINE
JONES, BESSIE NEAL
JONES, CORRIE LEE
JONES, GLADYS BEATRICE
JONES, HATTIE LOUISE
JONES, MAE FRANCES
JONES, THERESA LOUISE
KANNEDY, ANNIE SLAUGHTER
KELLUM, CHRYSTABELLE SNOW
KIMBROUGH, FLEMING L.
KNOX, MARION ELIZABETH
LANE, DAISY LEE
LANE, OLIVIA LOUISE
LAVENDER, SAMUEL WESTLY
LEA, LA LETA
LEABOUGH, BONNIE
LEAGUE, GRACE EVA
LIGON, WALKER TURNLEY
MCLELLAN, ROBBIE ELOISE
MCCOMLE, MINNIE COSTELLO
MCLIN, NELDA FRANCES
MCNARY, SUSIE MAE
MALLORY, LUCILE LEAVELLE
MARTIN, CORA BOB
MAXWELL, MATTHEW OLIVER
MAYBERRY, JAMES CLIFFORD
MAYBERRY, SOPHRONIA D.
MERRIWETHER, FLORENCE LILLIA
MILLER, BERTHA
MILLS, ROOSEVELT
MINOR, RUTH CATHERINE
MOORE, EUGENE ERNEST
MORSE, LACULIA
MORTON, LOUISE
MYERS, THOMAS J.
NICHOLS, FRANK ALBERT
NICKOLSON, THELMA MAI
NOWLIN, EDYTHE WHITSON
OFFICER, PEARLIE ETTA
OFFUTT, JAMES LEE
OSBORNE, REBECCA LELA
PATTON, RUDOLPH CLINTON
PAYNE, EFFIE HART
PERKINS, HARRIETT ELIZABETH
PERKINS, WILLIAM FRANK
PIERSON, MARY JULIA
PITT, EDDIE DEBRELL
POPE, AURELIA IMOGENE
POSEY, EVELYN THOMASINA
POWELL, JULIA MARGARET
PRICE, ERMA VIRGINIA
PRICE, ROSA LEE
PURDY, ELBERT LEWIS
RAGSDALE, RUTH NAOMI
RAIFORD, IMA ALBERTA
RAMEY, JOSEPH SYLVESTER
RANDOLPH, ALLINE RUTH

RANDOLPH, MARY MAGDALENE
RIVERS, GRANDERISON SIMONS
ROBERTS, MAGGIE BELL
SCOTT, ALFRED ANTHONY
SCOTT, EDNA MAE
SCOTT, CLINORA NEELY
SCOTT, JOHN BENJAMIN
SCRUGGS, MARION TERESA
SHELBY, NATHAN THOMAS
SHELTON, ERNEST
SIMMONS, MYRTLE RUBY
SLOAN, NELLIE ALLEAN
SMITH, LEONA E. M.
SMITH, MARYLN E.
SMITH, THELMA EVELYN
SPENCER, ANNIE MAE
SPENCER, GLADYS ELIZABETH
STATEN, OCENIA MAE
STEWART, JAMES SPENCER
STINSON, LILA VIRGINIA
STOVER, CLARA MAE
STRANGE, FOREST WENTWORTH
STRONG, MARY LOUISE
STRONG, THELMA ARNETTA
STUART, ROMA CHRISTINE
SUGGS, VIOLA
SULGER, ALICE
SYLER, ODAIL MODENA
TALLEY, WILLIAM ANDREW
TARPLEY, ESTHER
TAYLOR, CHARLES HENRY
TEAGUE, E. KIRBY
TEMPLE, JESSIE MAE LOUISE
TERRY, DOROHTY JEAN
THOMPSON, FAIRAMBER
THRELKELD, ANNIE BELLE
TOWNSEND, ELIZABETH MARGARET
POLK, MAGGIE BERTHA TYNES
VICKROS, WALTER LEVY
WALKER, CURTIS LADELL
WALKER, RUSSELL SINCLAIR
WATKINS, EVELYN L.
WATKINS, NICHOLAS G.
WATKINS, LEVI
WHITLOW, NANNIE MAXWELL
WHITTAKER, ANNA MAE
WILLIAMS, HELEN N. L.
WILLIE, JOHNNIE TONEY
WILSON, ALLIE DEE
WIMBERLY, PATTI AMI
WINTERS, MORENA JOSSIE
WISDOM, MAGGIE LENA
WOOD, WILBUR ROSS
WOODARD, PAULINE
WOODS, MALLIE W.
WORDE, ELLA BELLE



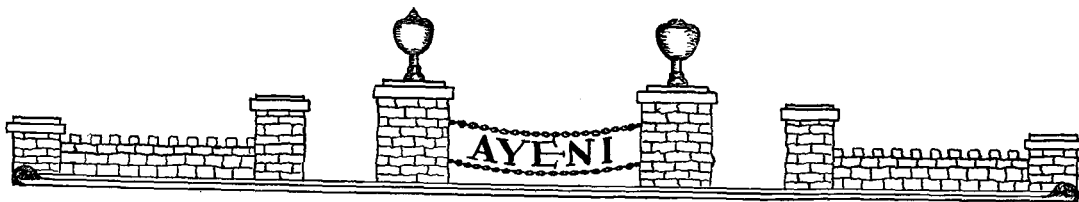


The Fourth Year Class

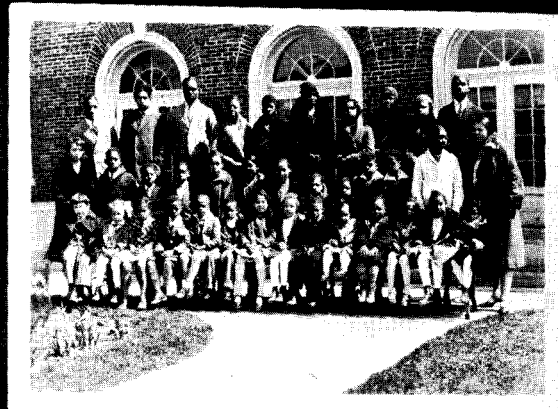


The Third Year Class





FIRST YEAR

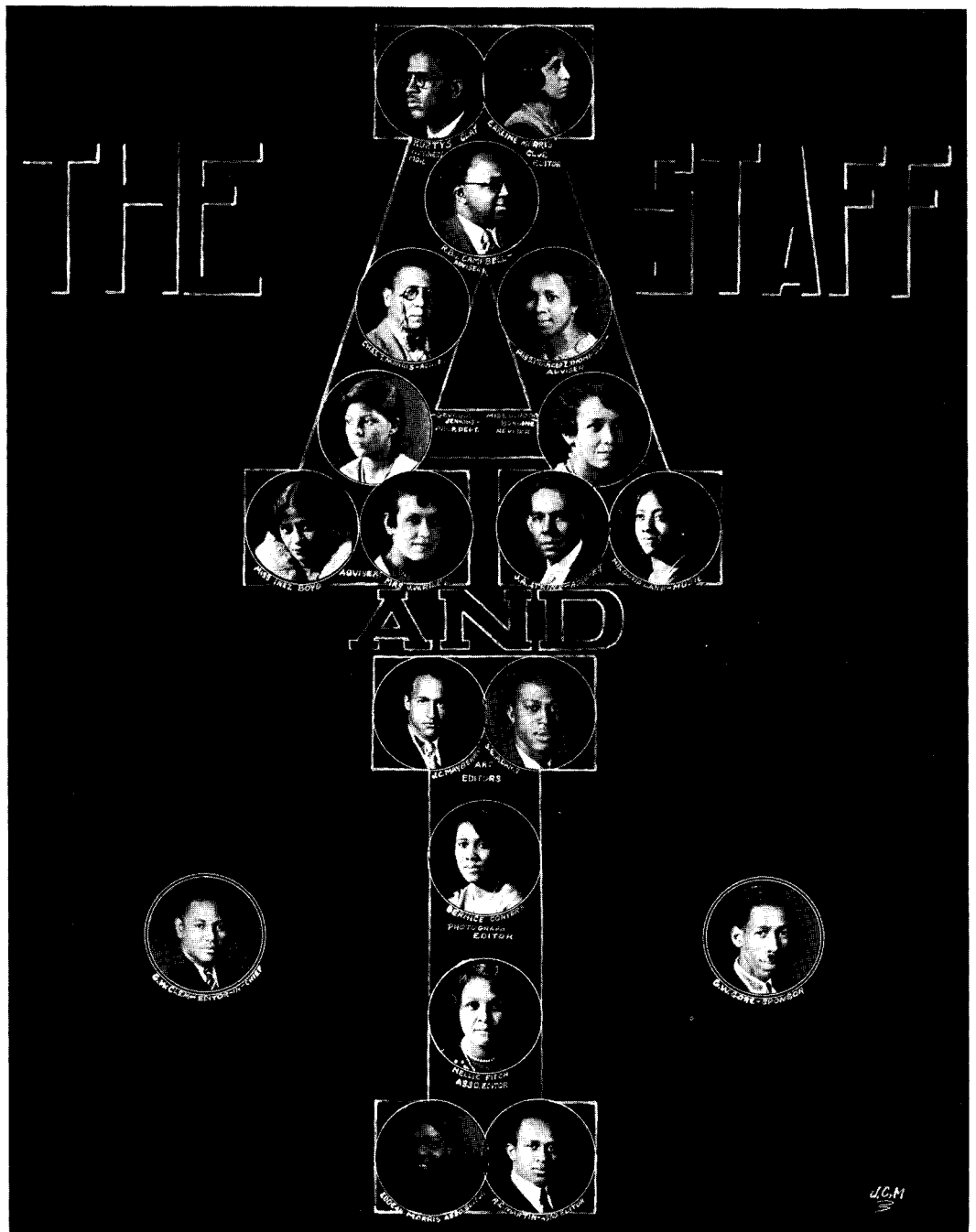
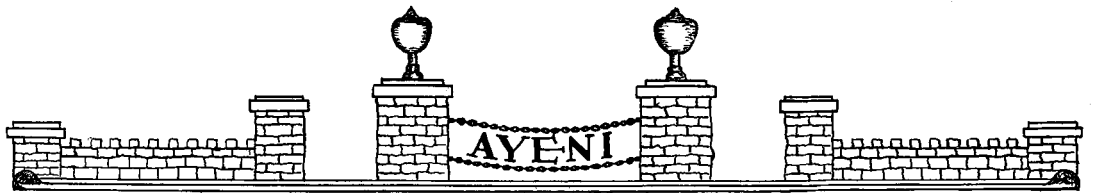


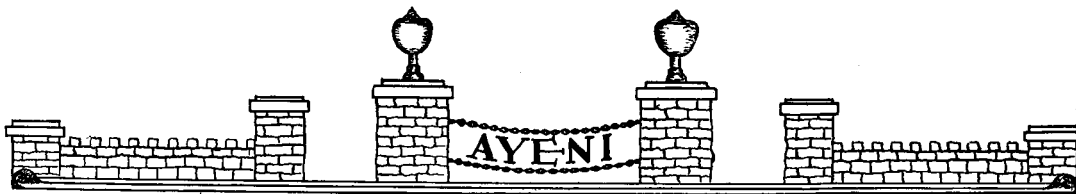
GRADES



SECOND YEAR







AYENI STAFF 1930

GEORGE CLEM..... *Editor-in-Chief*

KURTYS CLAY..... *Business Manager*

Associate Editors:

JAMES ADAMS..... *Art*

BERNICE CONYERS..... *Photographs*

NELLIE FITCH..... *Snapshots*

GEORGIA JENKINS..... *Preparatory Department*

OLIVIA LANE..... *Music*

JAMES MAYBERRY..... *Art*

R. C. MARTIN..... *Senior Class*

EARLINE MORRIS..... *Organizations*

EDDEAN MORRIS..... *Literary*

ROBERT SMITH..... *Athletics*

ROSA ROBINSON..... *Copy*

ADVISORY BOARD

G. W. GORE, JR., *Chairman*

MISS F. E. THOMPSON

MRS. MARY J. RILEY

MISS INEZ M. BOYD

MR. CHARLES S. MORRIS

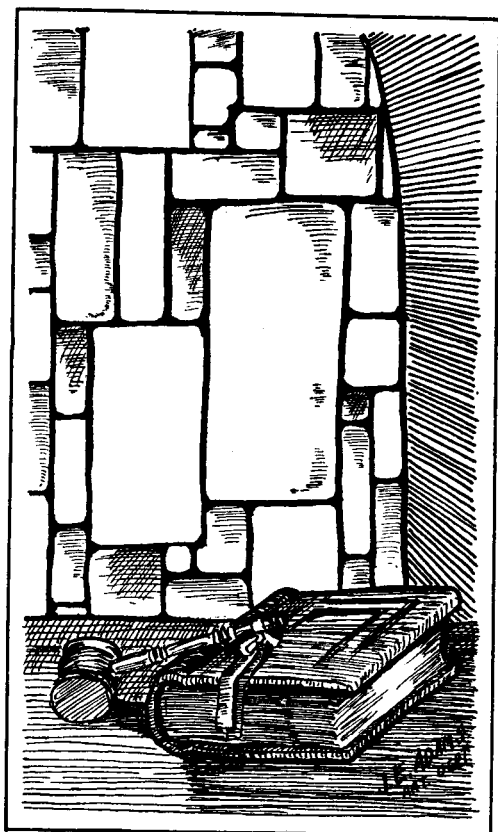
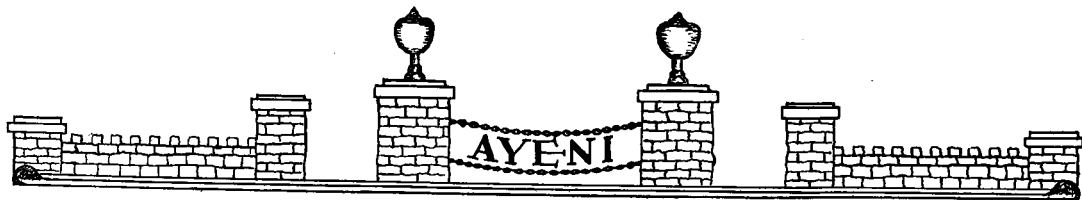
MR. ARMISTEAD PRIDE

MR. R. B. J. CAMPBELLE

MR. J. A. ATKINS

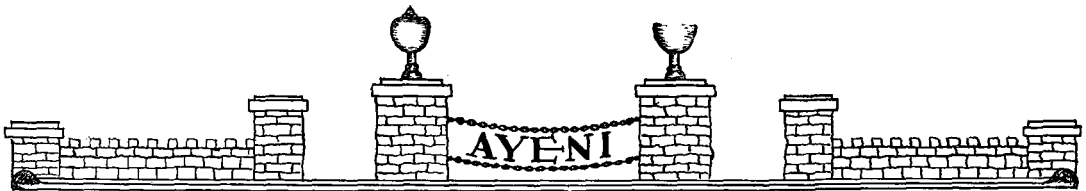
MISS DOROTHY BURDINE



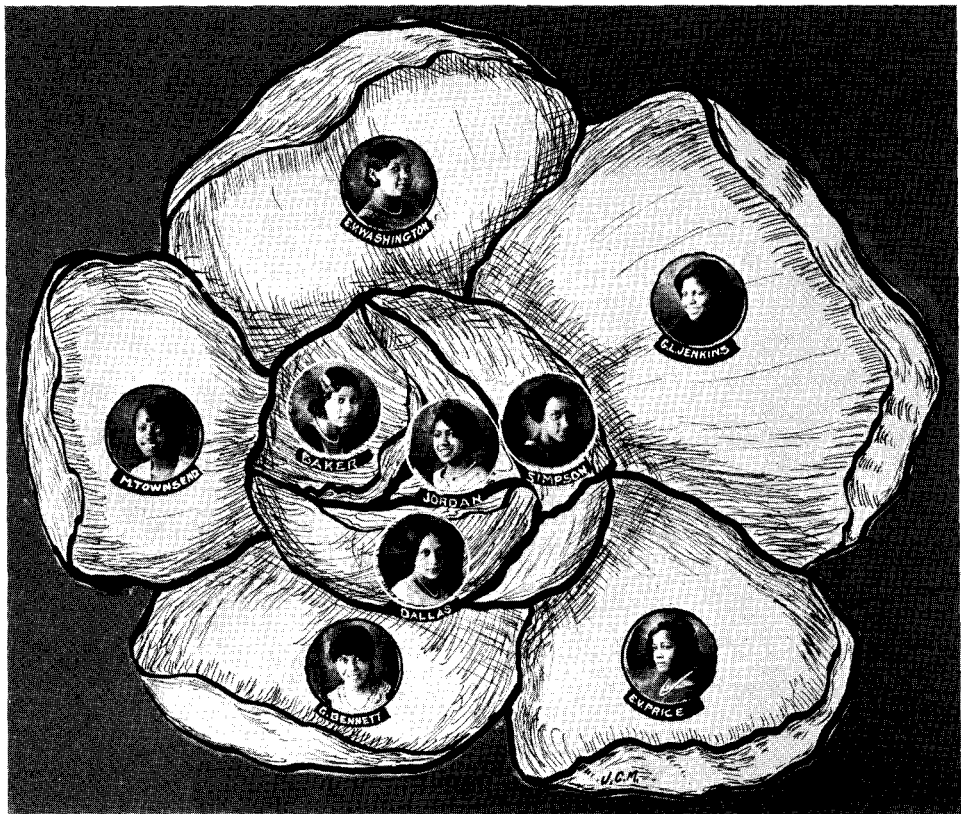


ORGANIZATIONS





Alba Rosa Club



CLUB PERSONNEL

ZENOBIA BAKER.....	LULA PEARL JORDAN.....	President
JESSIE MAI SIMPSON.....	MARTHA DALLAS.....	Assistant Secretary
ESTHER WASHINGTON.....	LILLIAN DUNN.....	Treasurer
MAI BELLE WOODS.....	CLARISSA LAPSLEY.....	CATHERINE HUNT
MARGARET TOWNSEND.....	LOTTIE COX LEWIS.....	GEORGIA JENKINS
CECIL CULLORS.....	GERALDINE BENNETT.....	SUE NEAL BLAKEMORE
	ERMA PRICE.....	BEULAH GOLDEN

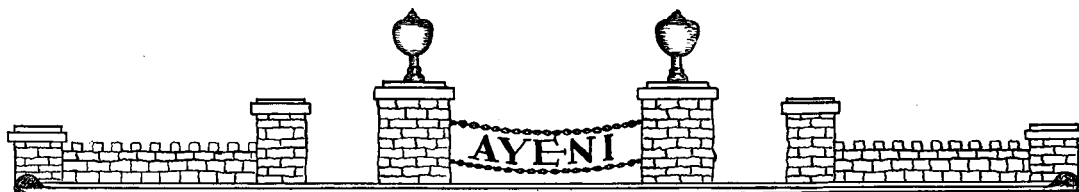
Advisers: MISSES INEZ M. BOYD and KATHERINE C. GILLESPIE.

Motto: "ROW, NOT DRIFT."

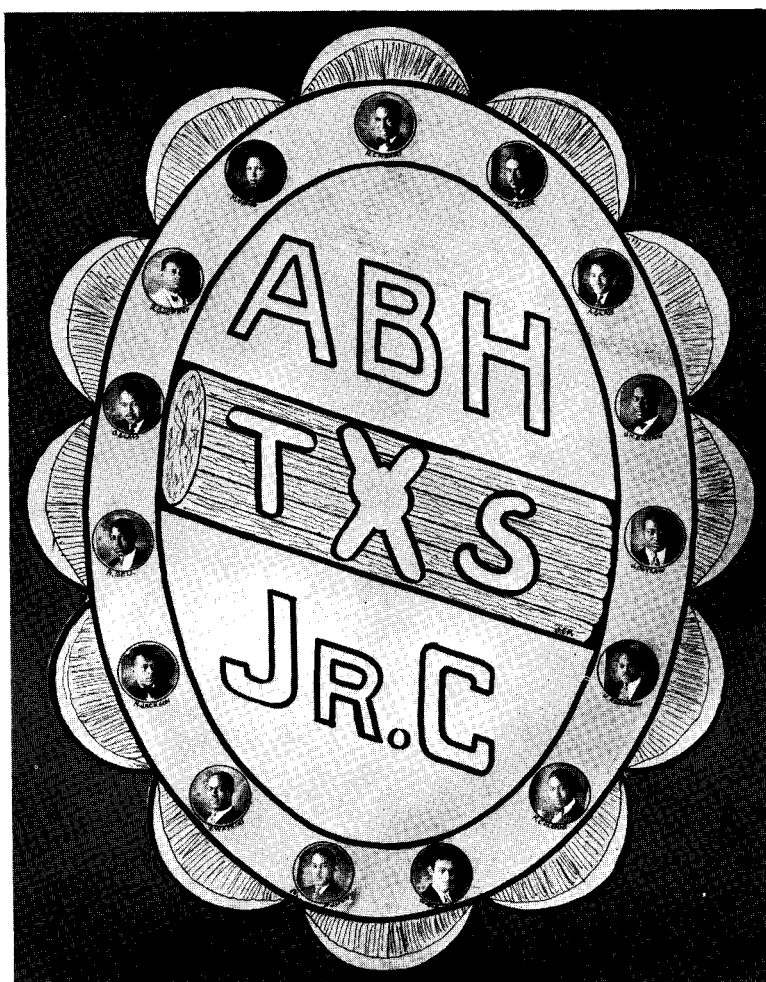
Colors: Pea-green and Pink. Stout colors: Black and White.

The Alba Rosa Club was organized in 1920 by a group of young women for the purpose of beautifying the campus and raising the scholastical standard. The white rose symbolizes beautiful young womanhood and idealism. Among the social activities sponsored during the year were: March 15, private buffet party; May 9, club day, at which time a bench was presented to the campus. A Block dance was the closing feature.





Anderson Billy Hale, Jr., Club



ROSS B. CHEAIRS, <i>President</i>	CHARLES GLASS, <i>Vice-President</i>
JOHN OUTLAW, <i>Secretary</i>	JOHN H. BROWN, <i>Chaplain</i>
THOMAS H. ROBERSON, <i>Treasurer</i>	WALTER M. FOSTON, <i>Critic</i>
ALFRED T. BELL	JNO. W. MORRISON, <i>Sgt.-at-Arms</i>
HARRY T. COLEMAN	G. W. GORE, JR., <i>Adviser</i>
ALONZO GLASS	WALTER W. KERR
	SAMUEL WATKINS
	MACK L. YOUNG
	NORRIS C. JACKSON

The Anderson Billy Hale, Jr., Club was organized October, 1915.

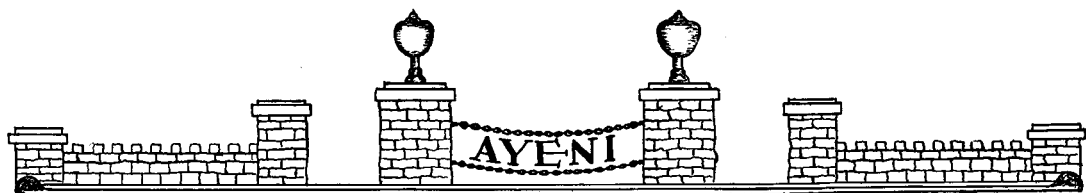
The object of this club is to promote the general intellectual and moral development of its members; to assist in every way possible in maintaining a high standard and developing high ideals among the students.

Some of the club's activities for the year were: the Anderson Memorial Vesper on December 1, a dinner party for the sister club, Delta Tau Iota, on December 17; Culture Week Program, February 24-March 1; annual banquet in the form of a cabaret party on May 10; and the awarding the two Scholarship Medals on commencement day.

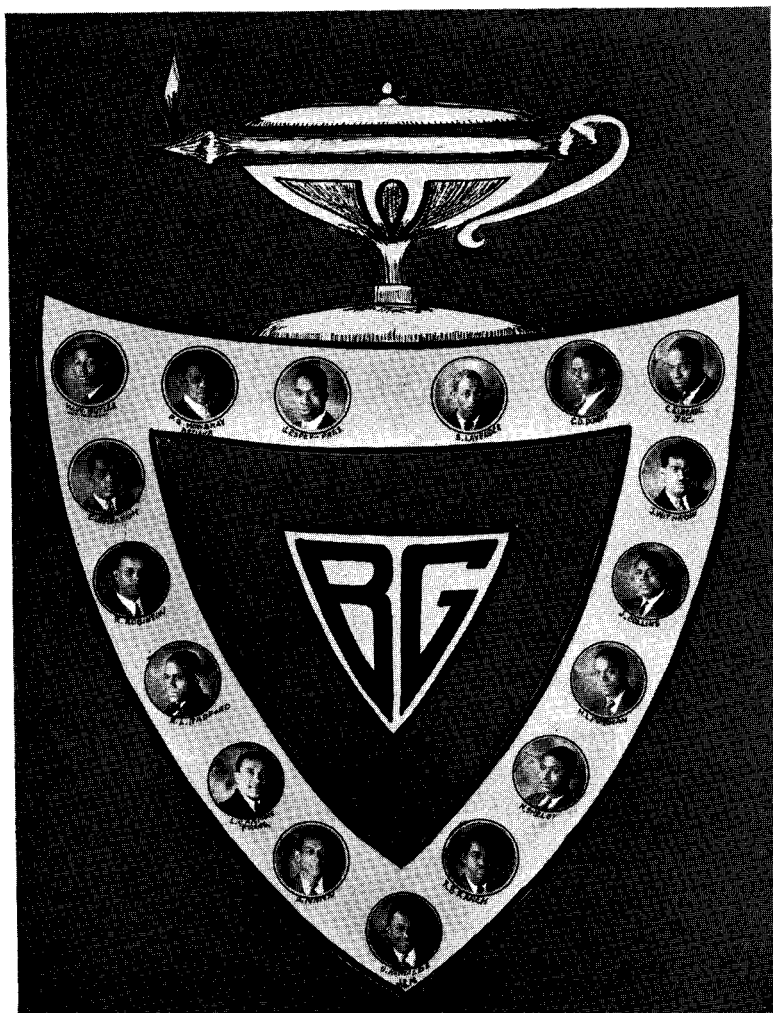
The Anderson Billy Hale, Jr., Club is the oldest organization on the campus. It was organized in October, 1915.

The chief object of this organization is to promote the general intellectual and moral development of its members and the entire student body.





Boule Guild Club



Founded February, 1919.

MOTTO—"Give to the World a Man"

ANNUAL CAMPUS ACTIVITIES

Negro History Week—Second week in February
Annual Banquet and Dance—Conclusion of Negro Week
Annual Stag—Second Saturday in May
Vesper—Mother's Day, Second Sunday in May

FOUNDERS

J. C. ADAMS.....*First President* Wm. GILBERT.....*Adviser*

FRATRES IN COLLEGIO

JOHN ESPY, *President*

W. W. BUTLER, *Vice-President*
CLYDE KINCAIDE, *Secretary*
HENRY FOREMAN, *Ass't Secretary*
GEORGE HALE, *Financial Secretary*
LUBY CARMAN, *Treasurer*
PROF. P. F. MOWBRAY, *Adviser*

L. R. BOYD
ROBERT BRANCH
JAMES COLLINS
C. A. DOWDY
A. D. KNOX
SAMUEL LAVENDER
THOMAS WITHROW

ARTHUR MANN
R. L. RADFORD
JOHN REYNOLDS
REID ROBINSON
NATHAN SHELBY
ERNEST SHELTON

FRATRES EX COLLEGIO

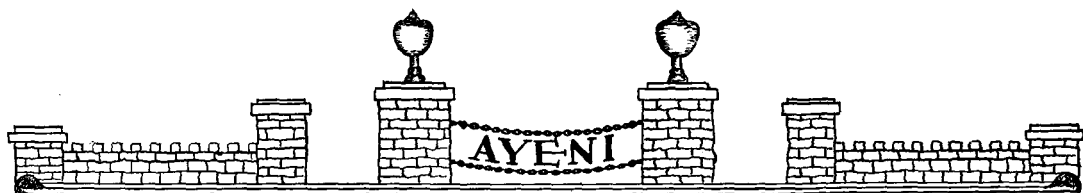
JULIAN BELL
ALTON JACKSON

T. R. GASTON
PAUL DAVIS

THOMAS RHINES
LEABRON O'NEAL

WALLACE COX
GEORGE JENKINS





Chattanooga Progressive Club



The officers for 1929-30 are as follows:

CLINTON DERRICKS.....	<i>President</i>
JOHN ESPEY.....	<i>Vice-President</i>
ROSALIE HUNTER.....	<i>Secretary</i>
RUTH RAGSDALE.....	<i>Assistant Secretary</i>
ROGER BAILEY.....	<i>Treasurer</i>
MISS INEZ BOYD.....	<i>Adviser</i>

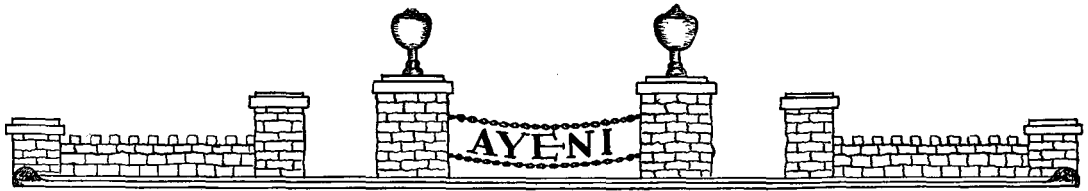
CLUB PERSONNEL

AGNES BENNETT
ROGER BAILEY
MARY BILLUPS
ETHEL CHAMBERS
AVIS CARITHERS
MABEL CURRY
WILBUR CHANEY
FANNIE DANIELS
CLINTON DERRICKS
HATTIE M. EDWARDS
JOHN ESPEY
NELLIE FITCH

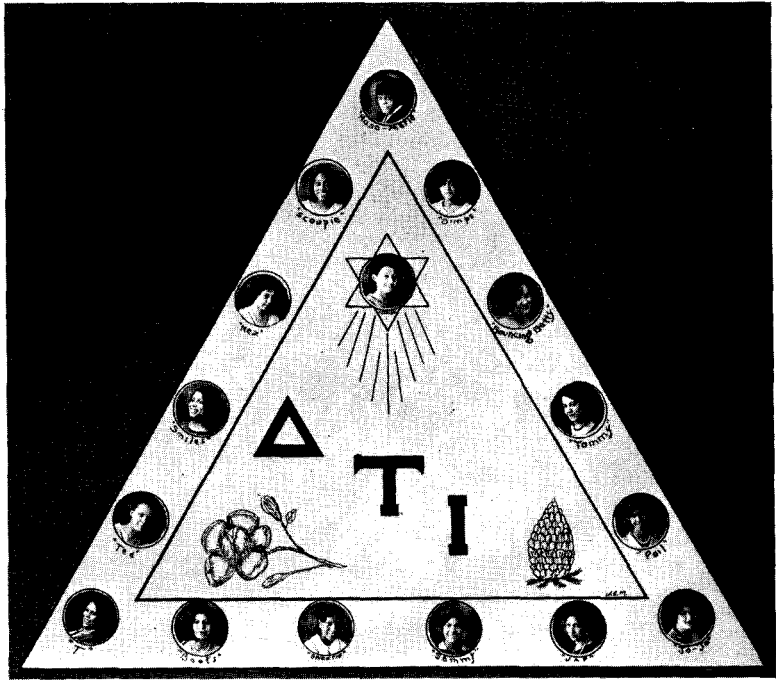
THEODORE FLETCHER
MARCUS GORDON
EARNEST HAMILTON
ROSALIE HUNTER
SADIE HUNTER
PEARL HENDERSON
CLARA IVY
CORRIE JONES
MONYETTE KING
MARION KNOX
NANNIE MILLER
BERTHA MILLER

BENNIE MATHEWS
CHARLES NEAL
INEZ NORTHCUTT
ETHEL PARKS
RUTH RAGSDALE
ETHEL ROLE
ALFRED SCOTT
LILA STINSON
AGNES SOLOMAN
LUCILE SUMMERS
CURTIS WALKER
ALVILLA WOODS





Delta Tau Iota



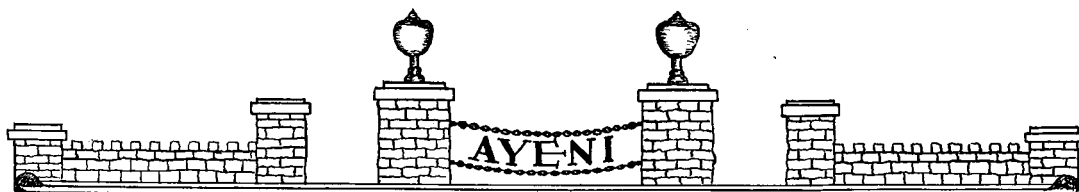
CLUB PERSONNEL

ROSA A. ROBINSON.....	<i>President</i>	MARGARET HAMILTON.....	<i>Secretary</i>
LETHIA PORTERFIELD.....	<i>Treasurer</i>	MISS EMILY MAY HARPER.....	<i>Adviser</i>
MABEL CURRY	PEARL HENDERSON	THEODORA HOWELL	
THELMA IZAAH	DAISY JEFFERSON	SUE CORBIN KENDALL	
INEZ NORTHCUTT	LILLIAN RICKS	JOSIE RUFFIN	
MYRA WILLIAMS SKINNER	THELMA SMITH	CAROLEEN STEVENS	
SAMUELLA TOTTY	MATTIE BOMAR	EFFIE RUTH FLOWERS	

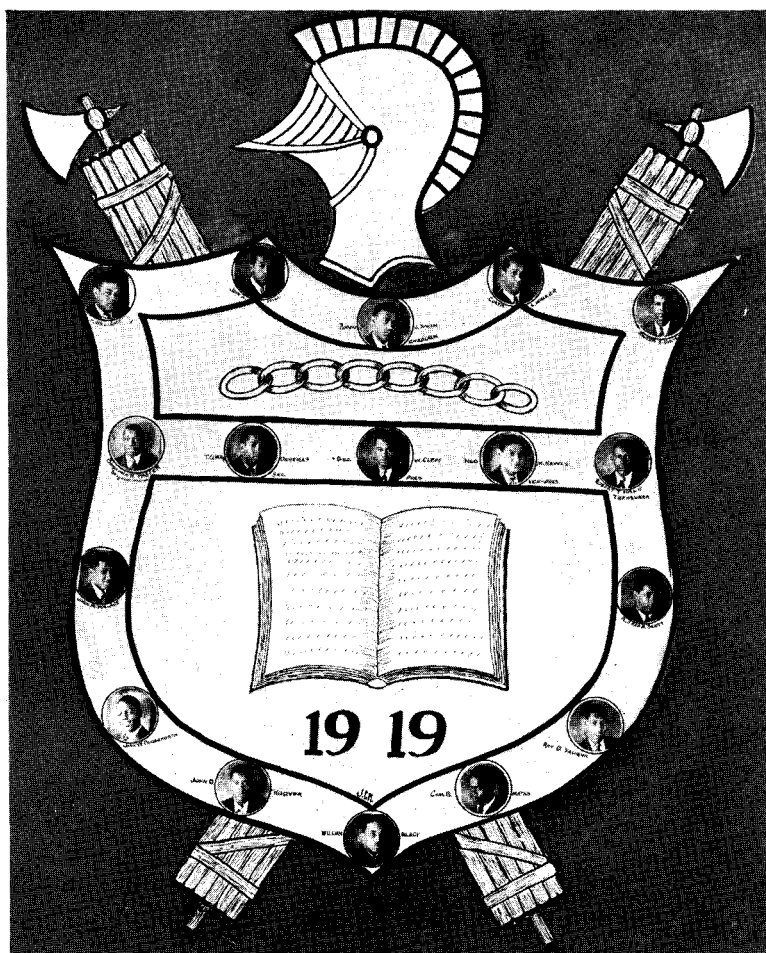
This is the oldest exclusive college women's organization on the campus.

Founded.....	1920
Colors.....	Old Rose and Gray
Flower.....	Marechal Niel Rose
Motto.....	"Not Evening, but Dawn"
Efforts.....	The fostering of "Womanhood Week"
Purpose.....	{ 1. To promote healthy, happy Womanhood 2. To establish high ideals of love and service
Contribution.....	Campus memorial. (A fountain to be erected in front of the High School Building.)





The Eight Links Club



This club was organized in 1919 with a membership of eight young men. The membership has increased now to eighteen young men.

For the past two years, through the competent leadership of their president, Mr. G. W. Clem, an unusual degree of interest in the club has been shown and the young men have put over very constructive programs.

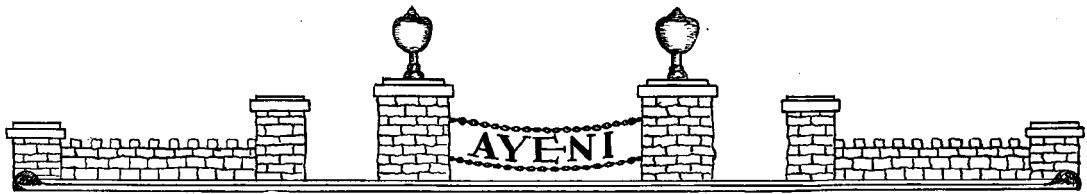
- Annual programs:
1. A Stag.
 2. Lincoln Day Memorial Service on Lincoln's Birthday.
 3. Passion Week Program.
 4. Annual Ladies' Night Banquet.

Club Colors: Black and Gold.

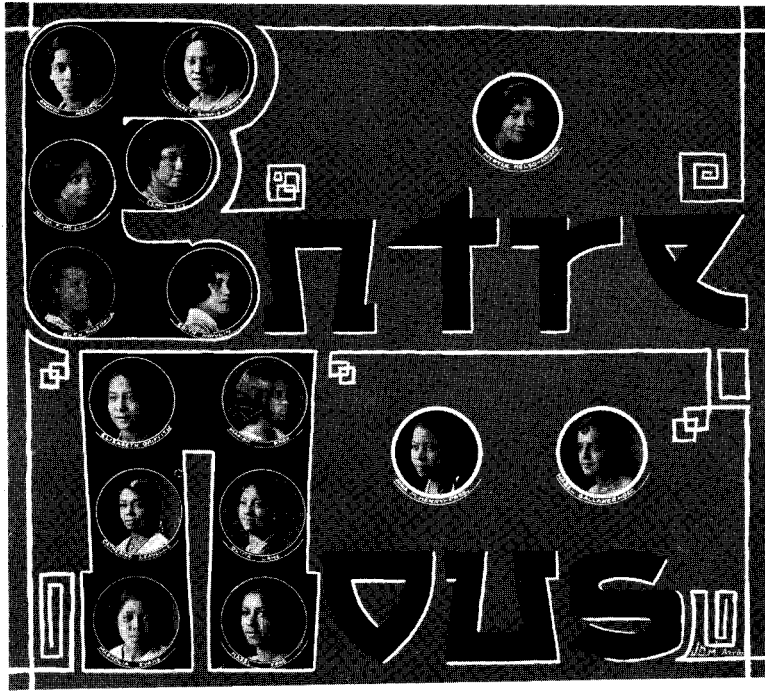
Club Flower: Tulip.

Club Motto: "Not for ourselves only, but for others."





Entre Nous Club



NINA HENRY.....	<i>President</i>
OLIVIA LANE.....	<i>Vice-President</i>
HAZEL GALLAHER.....	<i>Secretary</i>
MATTIE MCFALL.....	<i>Ass't Secretary</i>
MARGARET BURRIS.....	<i>Treasurer</i>
MRS. M. BROWN AND MISS MYRTLE B. KELSO.....	<i>Advisers</i>

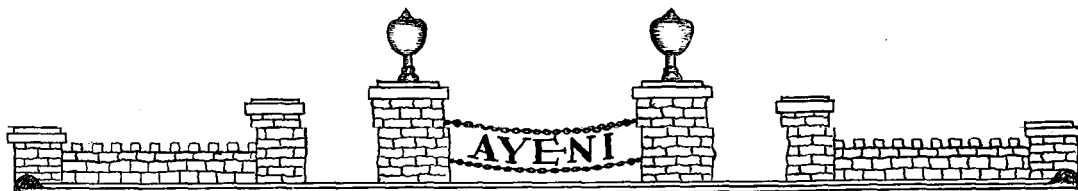
MEMBERS

OTTIS DEAN COLEMAN
HAZEL FORD
ELIZABETH GRIFFITH
MARIAN KNOX
AMANDA MEREDITH
GENNIE MAE MORGAN
RUTH RAGSDALE

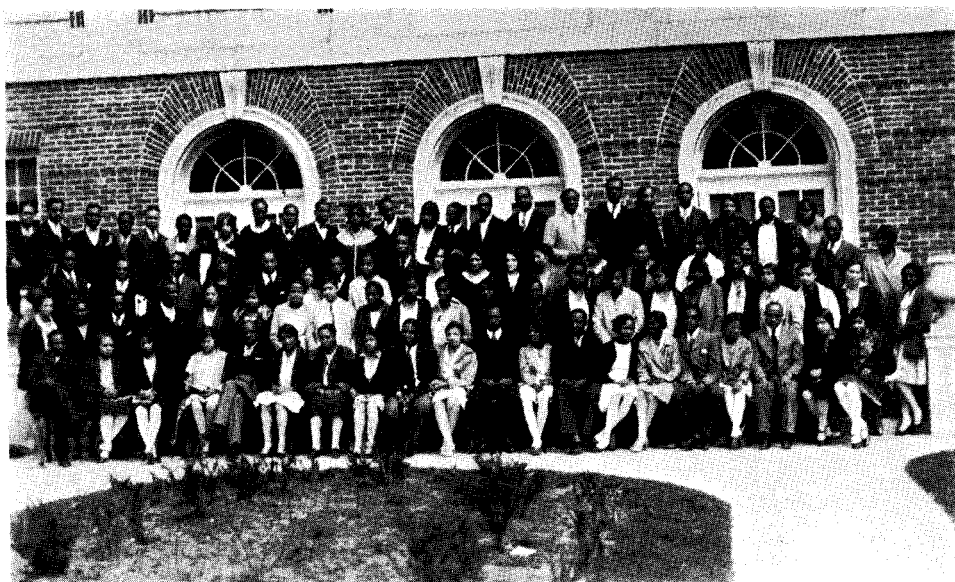
MAGNOLIA EVANS
GLADYS GATEWOOD
CLARA IVY
KATHERINE LEAVELLE
NELDA MCLIN
EDITH NOWLIN
VALERIA ROSS

Entre Nous was organized in 1923 by Mrs. Martha Brown. Its motto is "Striving To Excel," and its purpose, to better social conditions on the campus. Following its custom, the club sponsored during the first week of May, a Rose Garden Soiree and a musical program at its annual Vesper Service.





The History Study Club



The History Study Club of Tennessee State College has a membership of one hundred and twenty-five students. The purposes of the club are:

- (1) to create interest in current history,
- (2) to collect and make contributions of historical material to the history department,
- (3) to conduct a series of lectures,
- (4) to make tours and a study of historical places.

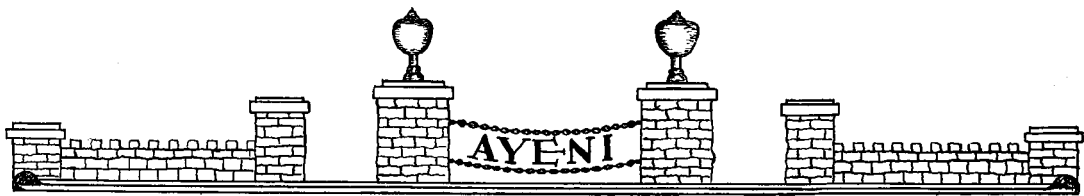
The present officers are:

WM. G. ANDERSON.....	<i>President</i>
GEORGE HALE.....	<i>Vice-President</i>
CLYDE BRADSHAW.....	<i>Secretary</i>
RUBY J. TRIPLETT.....	<i>Treasurer</i>

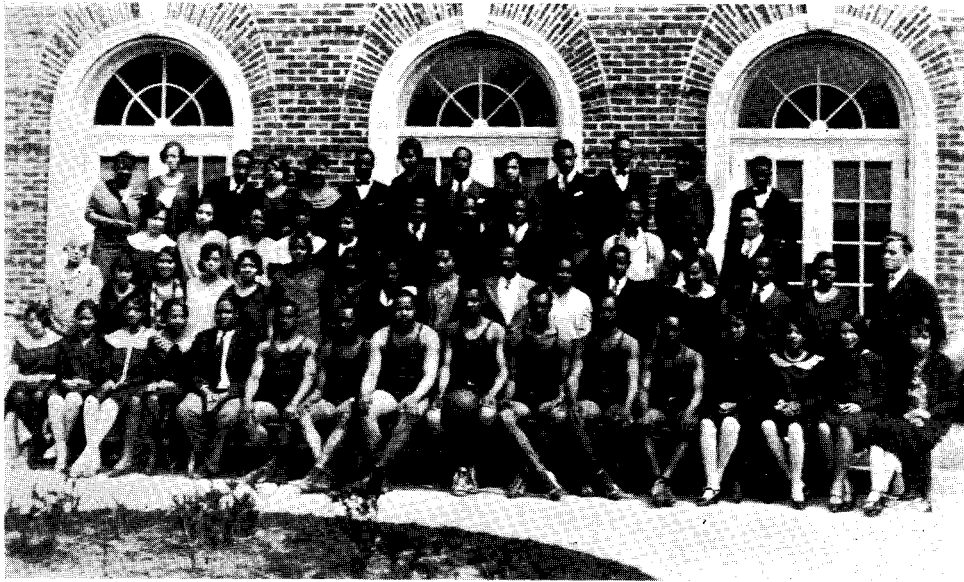
PROGRAM COMMITTEE

	SUE KENDALL, <i>Chairman</i>
LILLIAN BARBOUR	LAURA FOWLER
LEVI BEAL	G. RIVERS





Kentucky Club



MOTTO:

"To Cooperate and to Excel"

COLORS

Blue and Gold

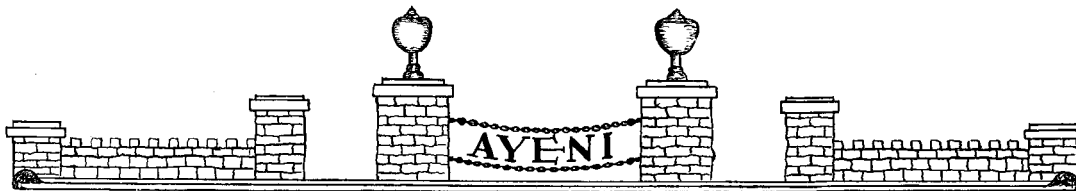
OFFICERS

DOROTHY V. LEAVELLE.....	<i>President</i>	LUBY CARMAN.....	<i>Treasurer</i>
CHARLES DOWDY.....	<i>Vice-President</i>	GEORGE HALE.....	<i>Serg't at Arms</i>
DOROTHY TERRY.....	<i>Secretary</i>	EFFIE R. FLOWERS.....	<i>Pianist</i>
JUANITA McNARY.....	<i>Ass't Secretary</i>	MRS. G. W. GORE, JR.....	<i>Adviser</i>

The Kentucky Club was organized in the fall of 1926, for the purpose of creating greater interest among Kentucky students, and also to increase the number of the enrollment from the Blue Grass State.

Under the leadership of Mrs. G. W. Gore, the founder, the students seek to exhibit a spirit of cooperation and to maintain a high grade of scholarship.





Le Cercle Francais

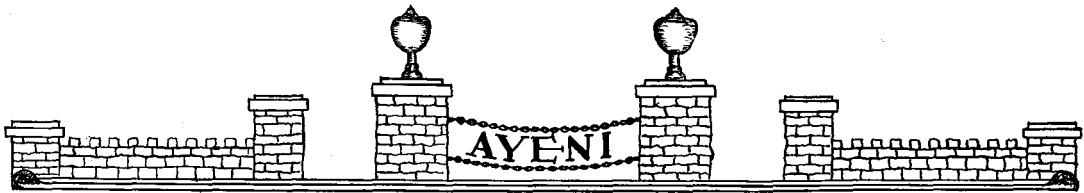


WILLIAM J. HALE, JR.	<i>President</i>
CLARISSA LAPSLEY.	<i>Vice-President</i>
GERALDINE BENNETT.	<i>Secretary</i>
WILLIAM K. BROWN.	<i>Treasurer</i>
MYRTLE B. KELSO.	<i>Adviser</i>

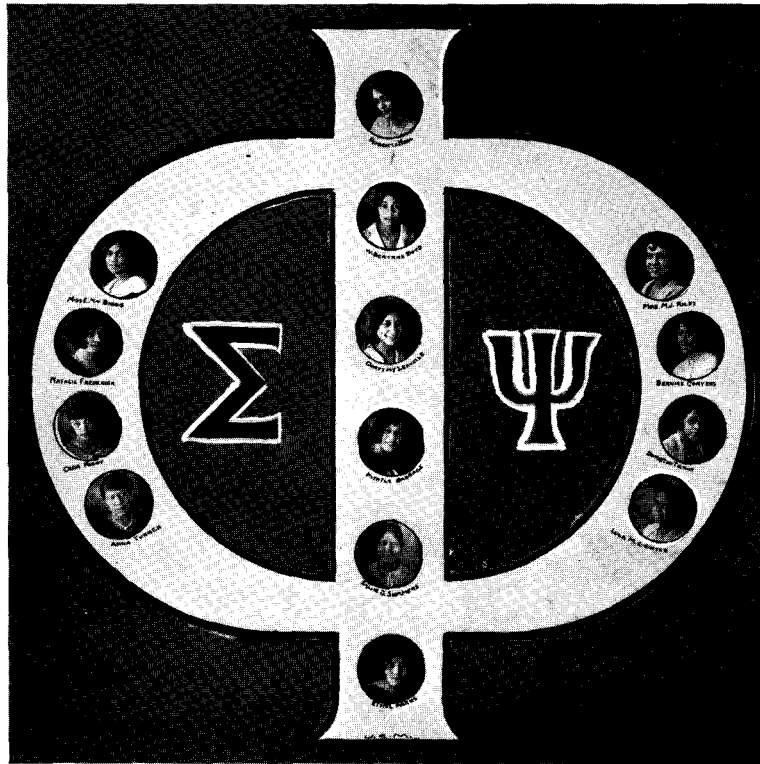
Le Cercle Francais is a departmental organization formed to stimulate an interest in the life and literature of France, and to provide for students of French an opportunity to speak and hear the language. French songs, games and anecdotes make up the program of the meetings.

The club presented a French program entitled "L'Esprit de France", at Vesper on Sunday, April 27, at which Monsieur Metz T. P. Lochard, professor of French at Fisk University, spoke in his native language, interpreted by the club adviser. French songs by the club members and the reading of the Lord's prayer in French made up the rest of the program.





Sigma Phi Psi Club



ROBERTA NEAL.....*President*
 DOROTHY LEAVELLE.....*Vice-President*
 ANNA TURNER.....*Treasurer*
 MYRTLE BABBAGE
 WILLA B. BOYD*
 LULA M. GRINTER
 HELEN HALCOMB

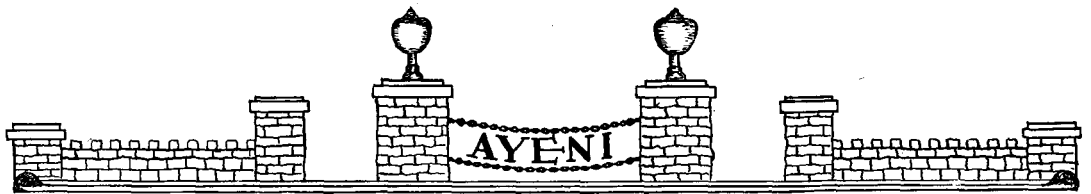
NATALIE FREDERICK.....*Secretary*
 BERNICE CONYERS.....*Ass't Secretary*
 MISS EDNA M. BIGGS...*Faculty Adviser*
 ETHEL PARKS
 OLGA POGUE
 DOROTHY TERRY
 SALLIE SUMMERS

The Sigma Phi Psi Club was organized January 23, 1926, by nine young ladies, namely, Misses Willa Boyd, Gladys Buckner, Carrie Berry, Ethel Craft, Edna Ford, Verna Nance, Zana M. Rogers and Sallie Gladdish with Mrs. Mary J. Riley as faculty adviser.

The purpose of the club is to aid in the betterment of the educational, moral and social activities of the institution by producing students who are earnest in the pursuit of higher learning, clean in their thoughts and desirous of contributing to moral betterment of the institution, congenial and fair in their social dealings, with an idea toward making the home life of the women's dormitory pleasant for all.

*Graduate member





Supreme Circle Club



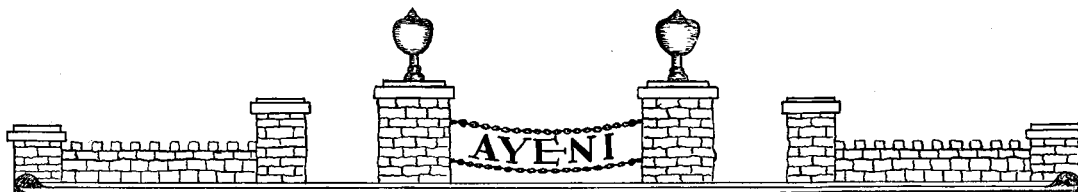
The Supreme Circle Club was organized in 1919 by a group of sincere young men under the supervision of T. MacHarris. The club fosters Negro National Health Week and Memorial Vesper for T. MacHarris each year. Feeling as a group of men, that they should not be satisfied with the ordinary things and ways of doing them, they have as their motto, "Summa Omnibus."

Following the regular health week program, the Supreme Circle featured a special dance on the night of April 5, 1930, in honor of their lady friends, the faculty, the four male clubs and their company. Music was furnished by Jimmie Lunceford and his "chicks".

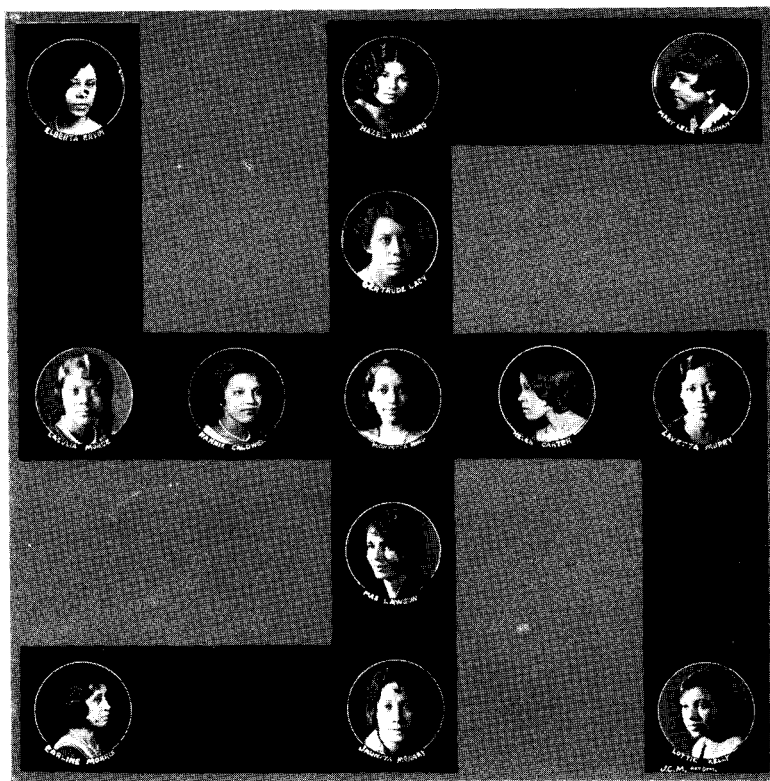
PERSONNEL

E. E. PITTS.....	<i>President</i>
G. W. BROOKS.....	<i>Vice-President</i>
W. H. HOLT.....	<i>Secretary</i>
J. E. ADAMS.....	<i>Ass't Secretary</i>
C. L. LEE.....	<i>Cor. Secretary</i>
S. E. JONES.....	<i>Treasurer</i>
P. B. BROWN.....	<i>Chaplain</i>
E. D. BROWN	L. W. JOHNSON
L. CHILTON	T. F. MILLER
V. O. DOBBINS	R. C. MARTIN
S. F. DOBBINS	G. A. NEWBERN
C. HARDY	E. L. PURDY





The Swastika Club



HAZEL WILLIAMS.....	<i>President</i>	GERTRUDE LACEY.....	<i>Secretary</i>
MONYETTE KING.....	<i>Treasurer</i>	MRS. GEORGIA LAWSON.....	<i>Adviser</i>
LACULIA MORSE	LOTTIE KELLY	EARLINE MORRIS	
NANNIE CALDWELL	HELEN CARTER	ELBERTA ERVIN	
LAVETTA MURRAY	MARY L. PARHAM	JUANITA McNARY	

The Swastika Club was organized February 10, 1923, by Misses Vera Beck' Margaret Thurston and Alma Mason, with Mrs. Agnes Kelley as adviser.

MOTTO—Eager for Service; Ready for Pleasure.

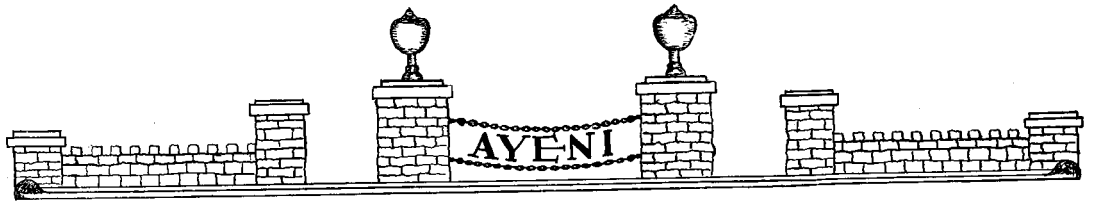
COLORS—Pea Green and Silver.

FLOWER—Sweet Pea.

AIMS—1. To create a desire for better literature.
2. To promote high scholarship.
3. To think clean and straight.

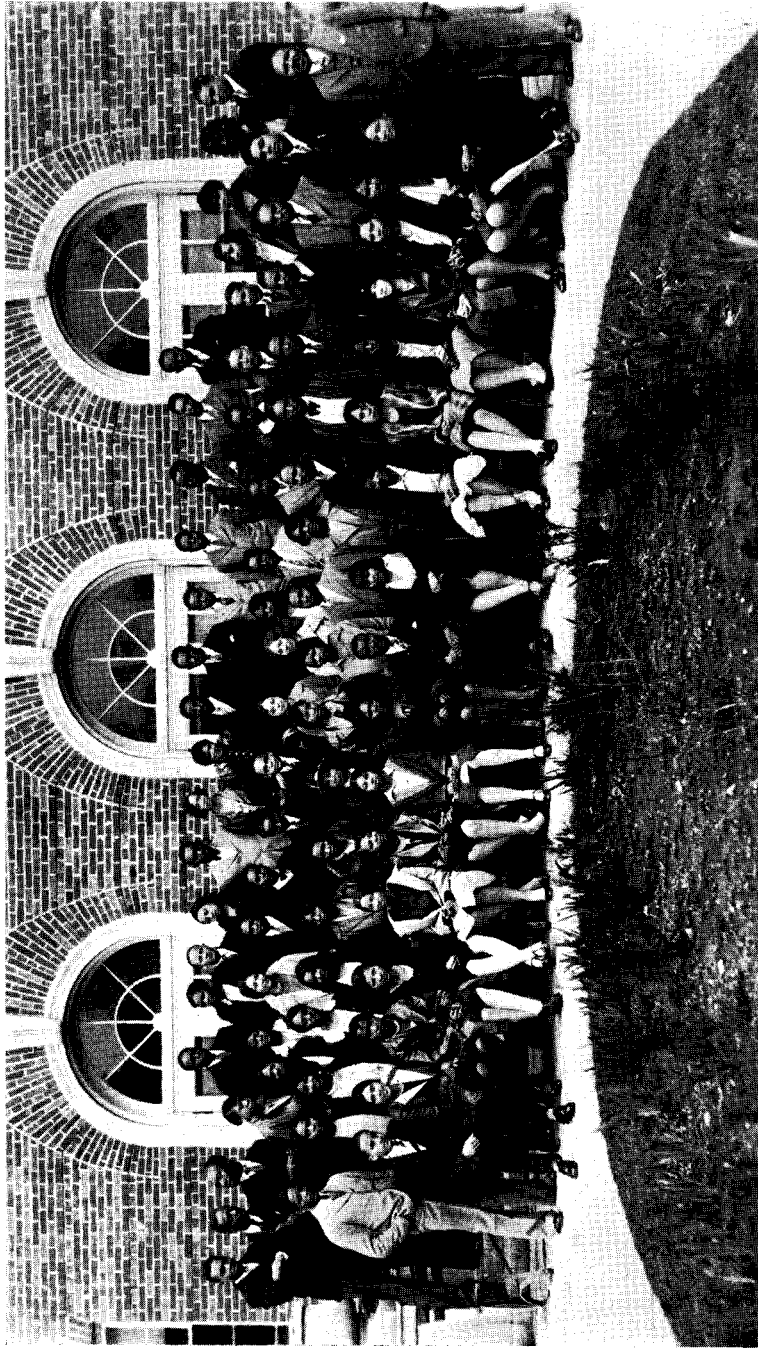
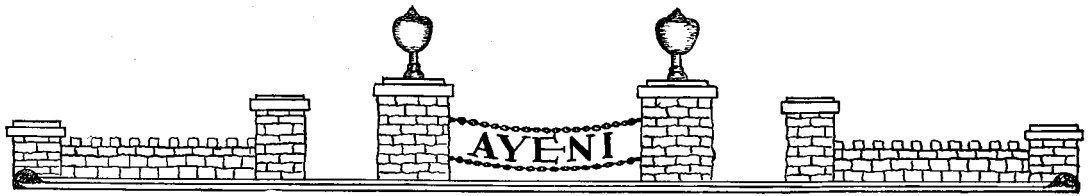
In accordance with its aims, each year the club presents Easter Vesper and "Better Literature Week", following which we crown our social activities with a Fete, the last Saturday in April.



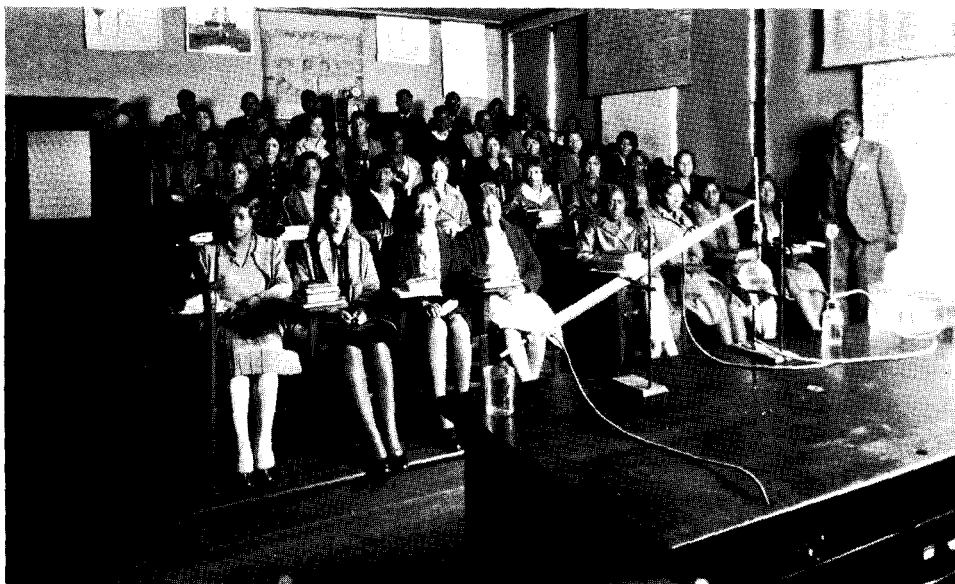
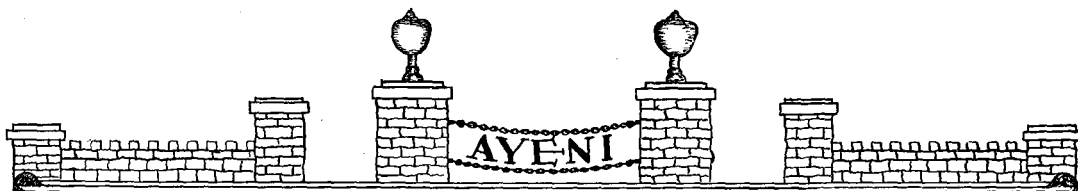


DEPARTMENTS

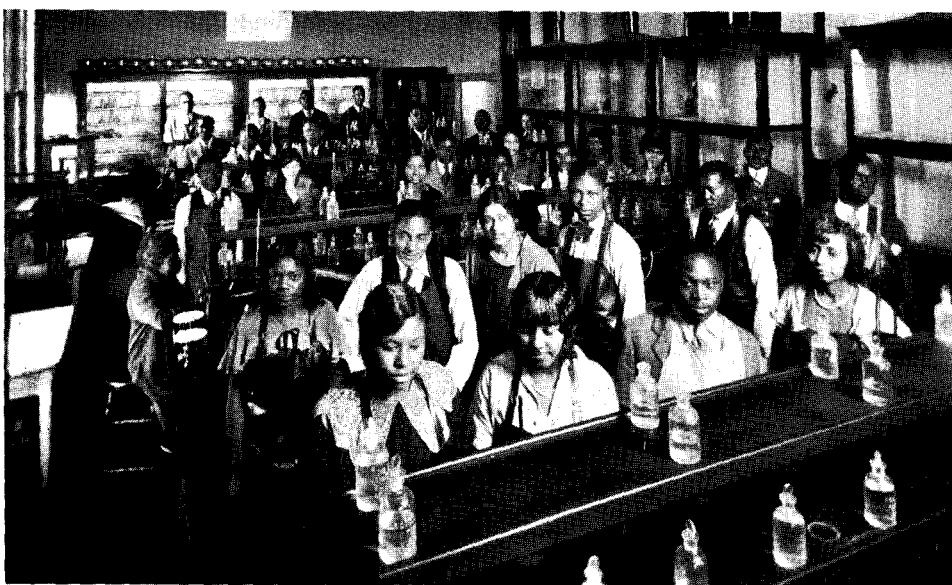




Chemistry and Physics Students. Professor D. A. Forbes, Instructor.

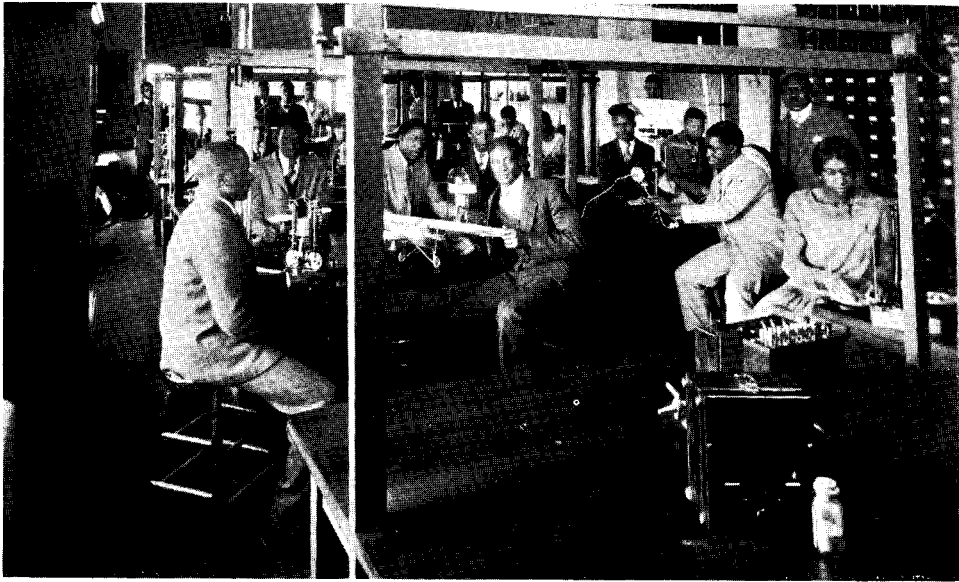
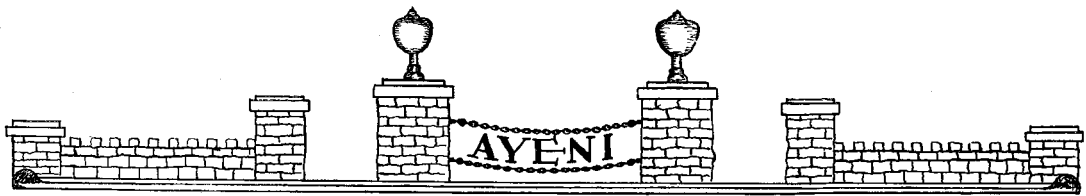


The 8:25 Recitation Section in Inorganic Chemistry



General Chemistry Laboratory



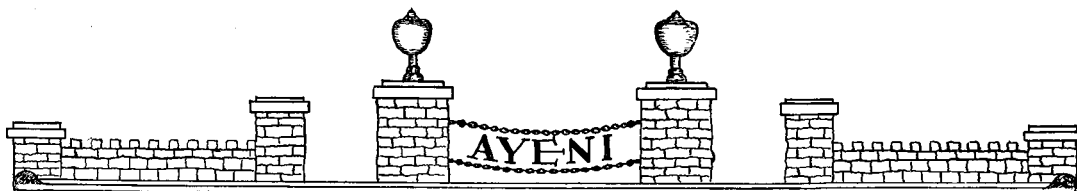


College Physics Laboratory



A Biology Laboratory Class



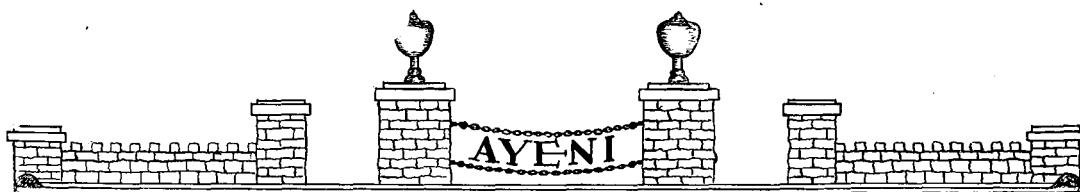


A Class in Agriculture. Prof. W. W. Lawson, Instructor



Practice School Science Laboratory. J. F. McClellan, Instructor



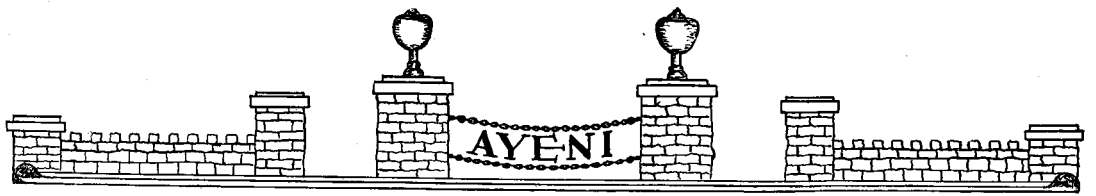


Commercial Department—Faculty and Students

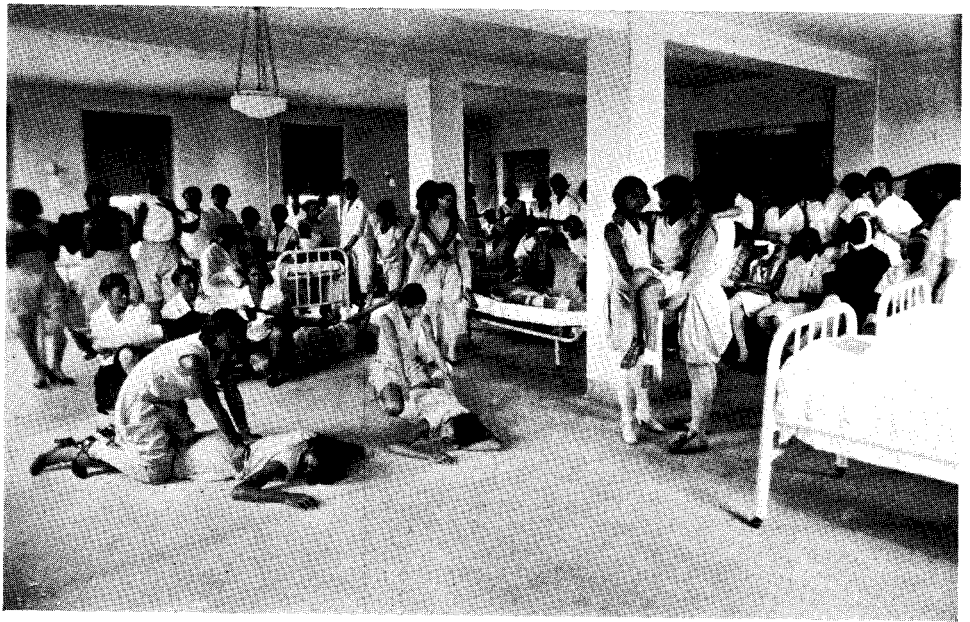


Administrative Offices



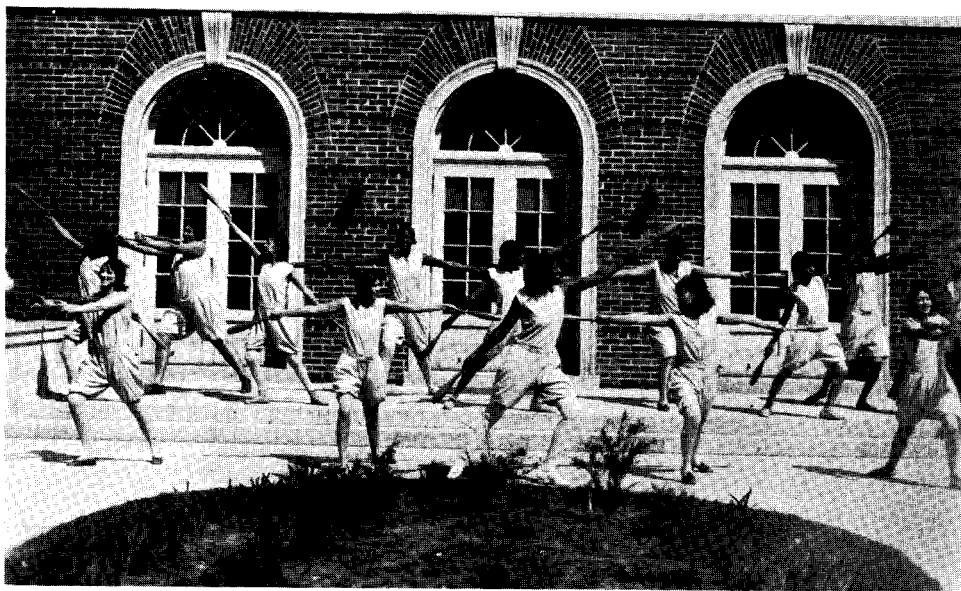
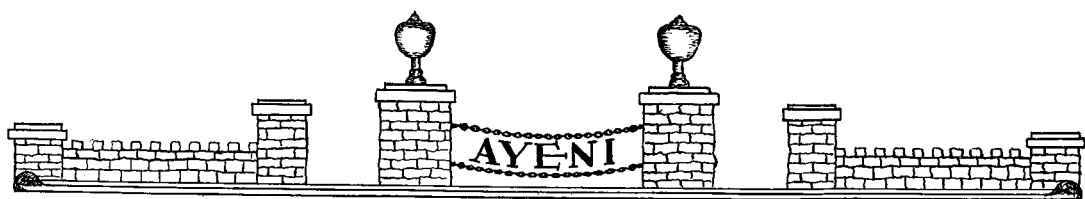


Class in Journalism. Dean G. W. Gore, Jr., Instructor

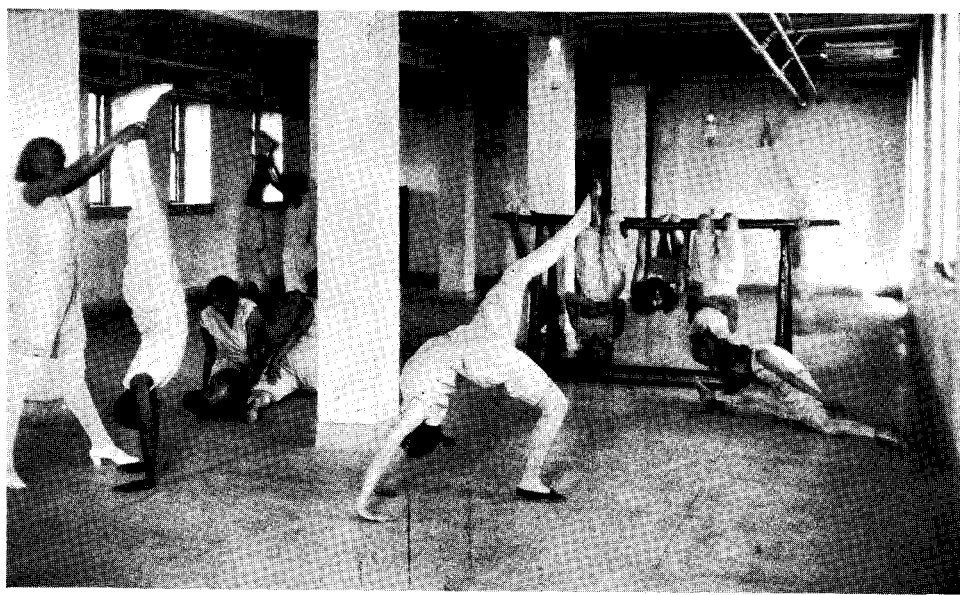


Class in First Aid



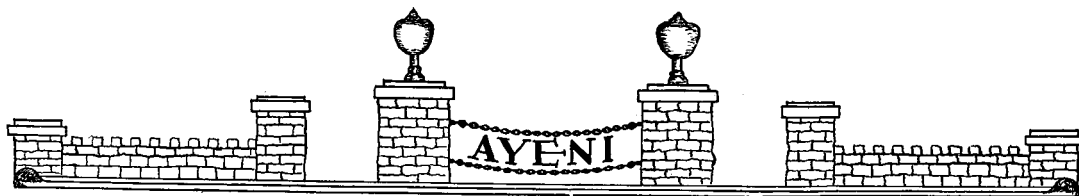


An Exercise with Indian War Clubs



A Special Class in Gymnastics. Miss Emily M. Harter, Instructor



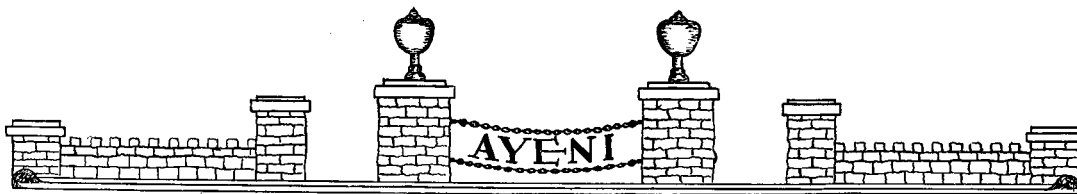


A Folk Dance by the Physical Education Girls



P. E. G. at Play





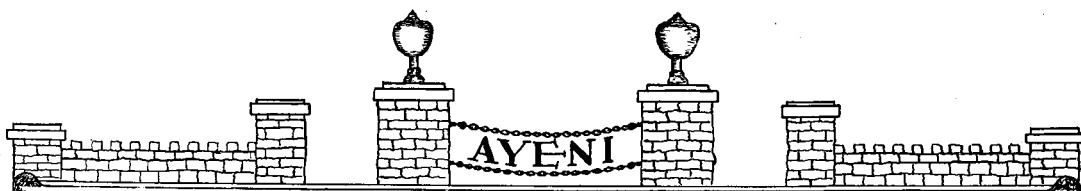
Department of Physical Education for Women

The women of the department of physical education survey the year 1929-30 with pride. We plunged into a year of strenuous work by setting the annual indoor exhibit for the close of the fall quarter instead of its usual middle of March date. The physical education majors were at that time studying the history of physical education, and the exhibit was organized as a pageant presenting the progress of physical education from the religious dances of primitive people through the Athenian and Roman gymnasia, the ages of Asceticism and Chivalry to the present day.

We skipped into the winter quarter on the joy of our pre-Christmas success, to be staggered by Applied Anatomy and the tasks of measuring biceps girth, making posture studies, and teaching hygiene and gym classes in the high school. In addition we had to put over the annual Board of Trade Show, and picked up a little costume designing in getting "Morning, Noon, and Night" dressed up as a first-class musical revue. As the pleasures of its success were relieving our struggles to determine whether the pectoralis major and trapezius could be simultaneously increased in tone by arm exercises and if jumping put the greater strain on the *obliquous extremus abdominus* than jumping (or necking) we were presented with a Physiology of Exercise and a stethoscope and instructed to make a series of heart rate studies to determine what variations in pulse and blood pressure the spring quarter and lovers' quarrels had made on our campus. So far we have found no cardiac lesions to substantiate the various tales of broken hearts among us, but we must admit the general pulse is rapid.

Accompanying our Physiology of Exercise, the Red Cross gave us a 20-hour course in First Aid, and we have kept an evil eye peeled for all casualties, that we might demonstrate our skill in bandaging, carrying, and resuscitation. As the year book goes to press, our own hearts are aflutter as to who will win those sweaters in the annual outdoor exhibit May 16th. "Joe" Ruffin has cut out ten of her social hours to practice the monkey hold, Thel and Martha have lost 5 pounds learning the flip, Mil Green has quit chewing gum and Olga has hit everyone in the head learning to swing clubs. Lil Ricks has come up from her silent corner and threatens to carry a "T" back to N. C., Lethia keeps our floor swept with her hair doing the knee hang, we've all lost our beaus because our shoulders are too sore from doing forward roll on the bars to admit of embracing, but with one accord we set out to put P. E. on the map this year and earn that new gymnasium. One lost romance or a few broken necks can't stop us on the road to health, efficiency, and happiness. Miss Emily Mae Harper is the instructor.





Morning --- Noon --- Night
A Musical Revue Presented Friday, February 28

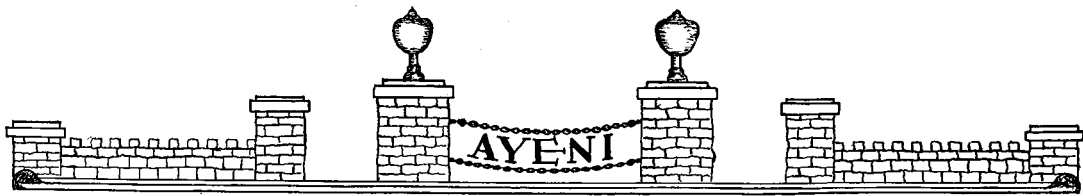


D. T. I. Cast



A. B. H.-D. T. I. Troupe





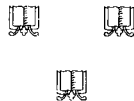
Art Education

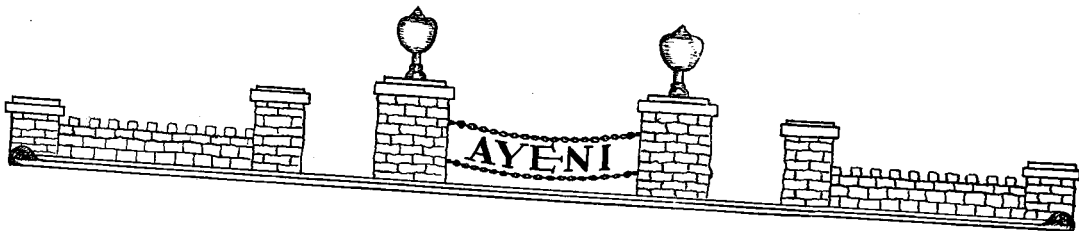
Big chunks of sticky red clay, pails of fine pulp, glass jars and bottles large and small, newspaper strips and pans of paste, drawing papers, paints, yards of thread and art ideas combined with dashes of harmonious color and form, classic in contour, grow into useful articles of utility and decoration in our art laboratories.

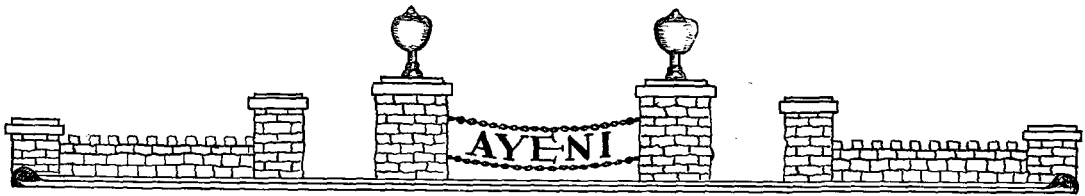
This year the special project was to find out by experiment how varied articles could be made from two mediums, the local red clay and paper pulp which is prepared from old newspapers. As a result we have constructed bookends, trays, powder jars, hair receivers, and pots from the clay. From the pulp, vases, lamp bases, powder jars, candy jars, cracker jars, fruit bowls, garlands for decoration in relief, candlesticks, jewelry boxes and ornamental paper weights have come gayly into being.

To strengthen observation, to awaken the student's natural sense of Art, to encourage his interest and ability to adapt the use of simple accessible materials so that he may produce without great expense, and in turn carry the idea on to students with whom he may work; and further to discover and encourage the development of talent in this direction, at least one quarter of intensive work is required of all college women. Art requirements for men are met in the classes in Mechanical Art and Manual Training.

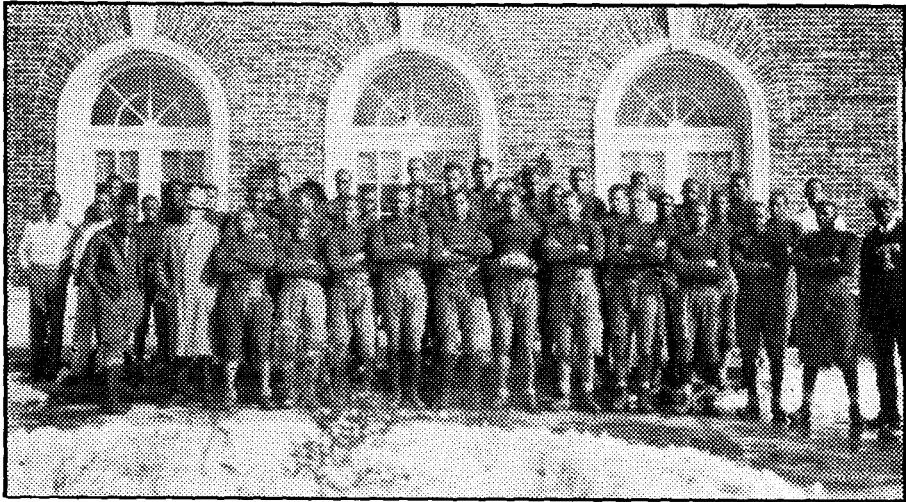
Practically all vesper services, dramas, and public demonstrations of all kinds were assisted by this department. The drawings, head and tail pieces and the mounting of photographs in this yearbook were done in the department.







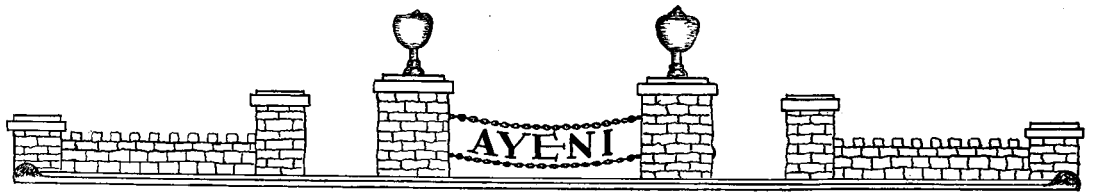
Tennessee “Tigers” Outscore Opponents During 1929 Season



Win 4 games—Tie 1 game—Lose 1 game. Pct. 800

	Pts.		Pts.
Tennessee State College.....	25	Miles Memorial College.....	0
Tennessee State College.....	7	Morris Brown University.....	0
Tennessee State College.....	14	Morristown College.....	0
Tennessee State College.....	6	Lane College.....	6
Tennessee State College.....	46	Mississippi Industrial College.....	0
Tennessee State College.....	0	Fisk University.....	20
<hr/>		<hr/>	
Total points scored.....	98		26



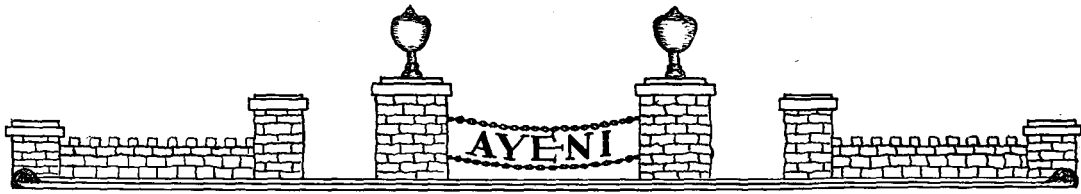


Practice School Basketball Team



Practice School Girls' Basketball Team





Credo

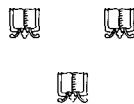
I believe in the commonwealth of Tennessee, in its two and a half million souls, variegated with a half million souls wearing an external pigment of black; in its bountiful natural resources; in its grand and glorious history; in its spirit of truth and justice and fair play.

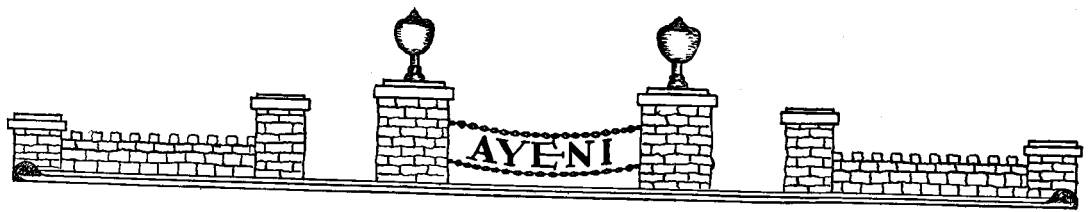
Especially do I believe in its officials: in the ability of its Chief Executives and General Assemblies and Commissioners and Boards of Education, who ever and unceasingly work for the uplifting of all mankind regardless of color or creed.

I believe in education in its truest sense—physical, mental, moral and spiritual. I believe that through such training we shall inherit the earth and the riches of life.

Because of all this, I believe in Tennessee Agricultural and Industrial State College: in its three-fold program of think, work, serve, combining as it does the trained mind with the skilled hand; in its President, who has developed within eighteen years a teacher-training institution of the first rank and has such a farness of vision that it does not yet appear what limits bind him; in its faculty, composed of talent and scholarship and consecrated service; in its student body, composed of the flower of Tennessee's budding manhood and womanhood of color; in its patrons and friends, who night and day guard its career, sustain it, pray for it and revere it.

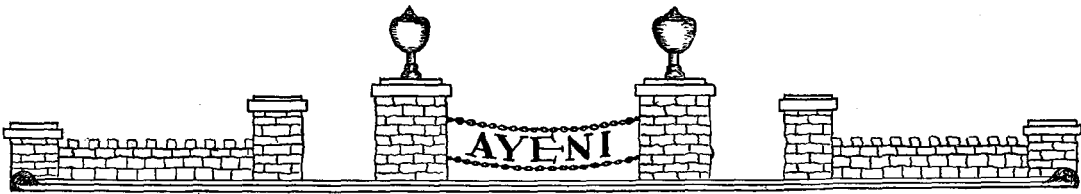
Further, I solemnly believe in the future of Tennessee Agricultural and Industrial State College: in its immediate possibilities with a physical plant, dedicated to inter-racial goodwill, worth more than a million dollars, with plans going forward for general beautification of the campus, the erection of teachers' cottages, a new athletic field, tennis courts, miniature golf course, trades and agriculture building, administrative and assembly building, gymnasium and women's industrial building, and with increasing biennial appropriations for current expenses. I believe that within a few years this institution will lead the South in teacher-training and vocational and technical education, and eventually set the pace for the entire nation.





MUSIC





Supreme Circle Quartette



During the winter and spring quarters of 1930, this quartette rendered unselfish service not only to the Supreme Circle Club but also to the school in general and out-of-town organizations, city schools and churches. They were admired for their ability to harmonize and won much honor and applause from their many admirers.

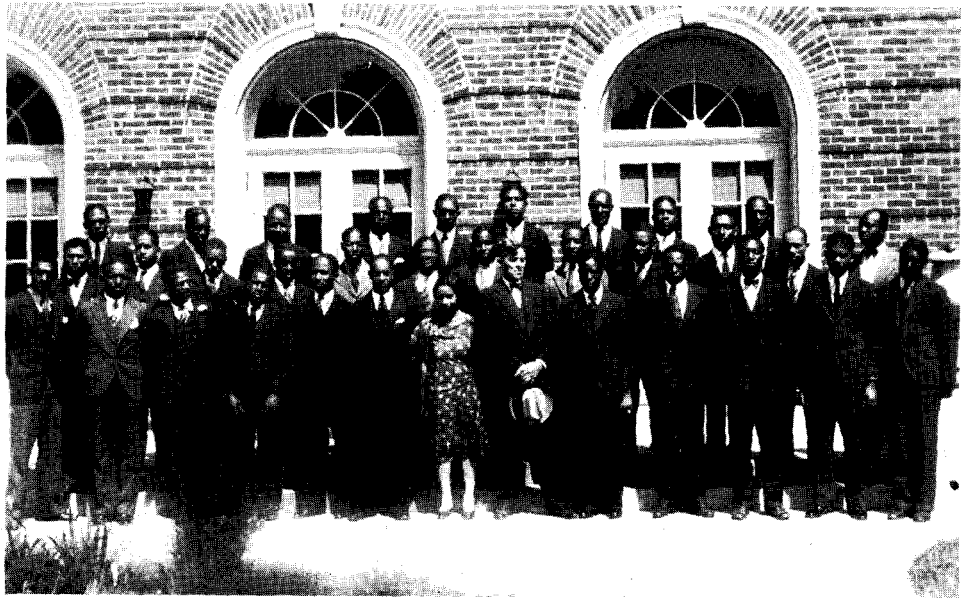
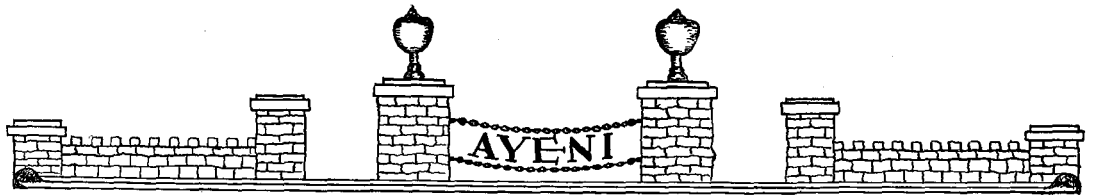
The members in the above picture are, from left to right:

E. E. PITTS, Senior College	<i>1st Tenor</i>
G. W. BROOKS, Sophomore College.....	<i>2nd Tenor</i>
WM. HOLT, Senior College.....	<i>1st Bass</i>
L. W. JOHNSON, Senior College.....	<i>2nd Bass</i>

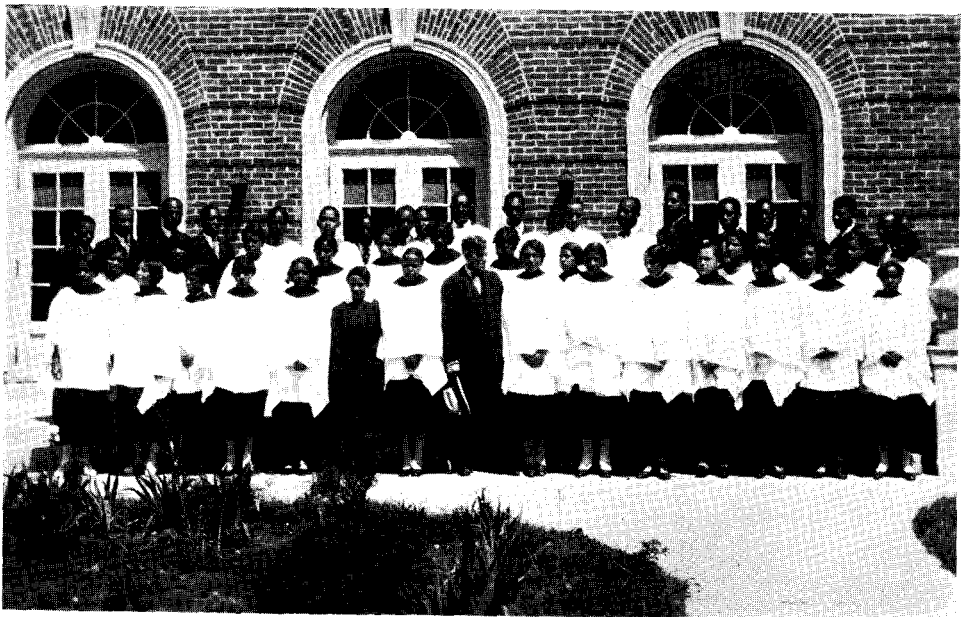
Rear—Left to right:

President W. J. HALE.
Prof. M. R. EPPSE, *Manager*.



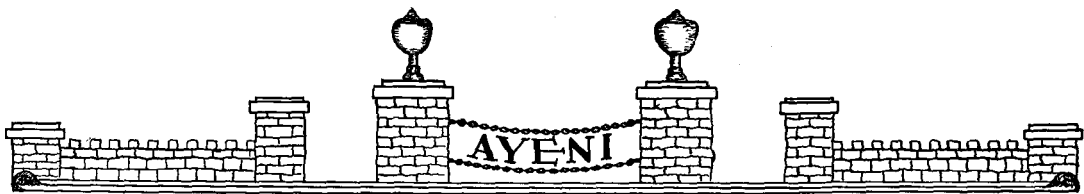


Men's Glee Club



College Choir





Musical Organizations

THE COLLEGE CHORUS AND ORCHESTRA

The college chorus and orchestra are made up of about sixty musical young people. The chorus appears every third Sunday in the college chapel in special music numbers. Twice this year nation-wide broadcasts have been made over station WLAC. On Easter Sunday a most creditable performance was given by the chorus of DuBois' "Seven Last Words of Christ". The college orchestra accompanied this work. Numerous times, also, these two organizations have represented the school throughout the city of Nashville at large civic, church, and neighboring college affairs.

MARIE J. BROOKS, *Director*.

FRANCES GRIMES, *Pianist*.

COLLEGE MEN'S GLEE CLUB

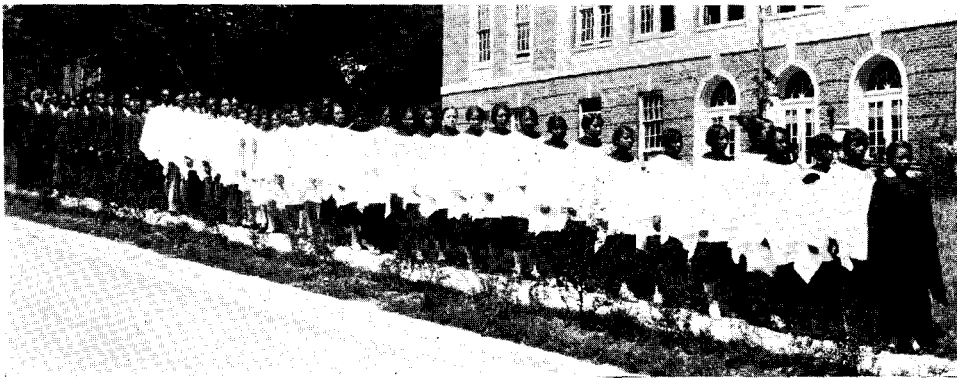
The newest but most representative musical organization on the campus, the Men's Glee Club, has made several appearances on the campus, has represented the college in the city and elsewhere, and have elicited great praise from all who have heard them. This fine group of singing young men bids fair to become the center of musical activities on the campus. Forty young men are active members of this group.

MARIE J. BROOKS, *Director*

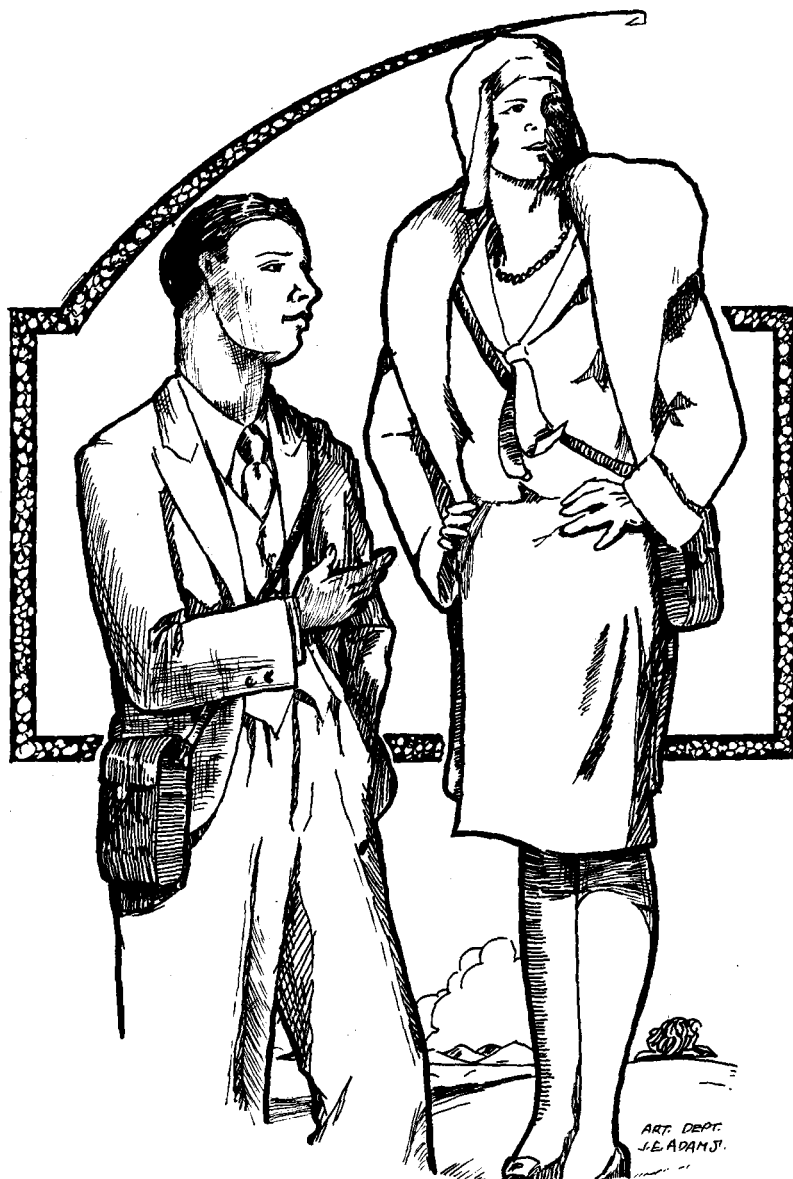
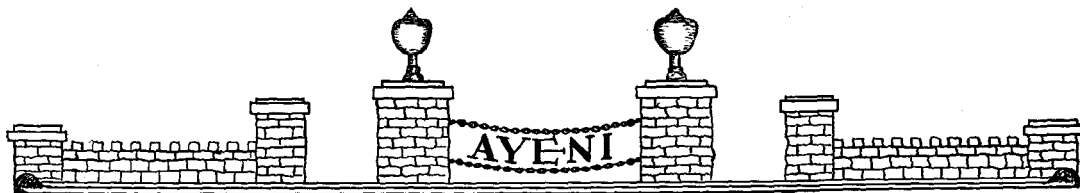
THE COLLEGE GIRLS' GLEE CLUB

About twenty-five sweet-voiced young women comprise the women's glee club. This is also a new but delightful singing group, and is making much progress under their director, Manitza Losoros.

National Music Week was celebrated on the campus in a most elaborate way, when all the singing bodies came together in a gigantic song-fest, assisted by soloists, trio and quartette. The program ranged from the great classics and modern compositions to Negro work songs and spirituals.

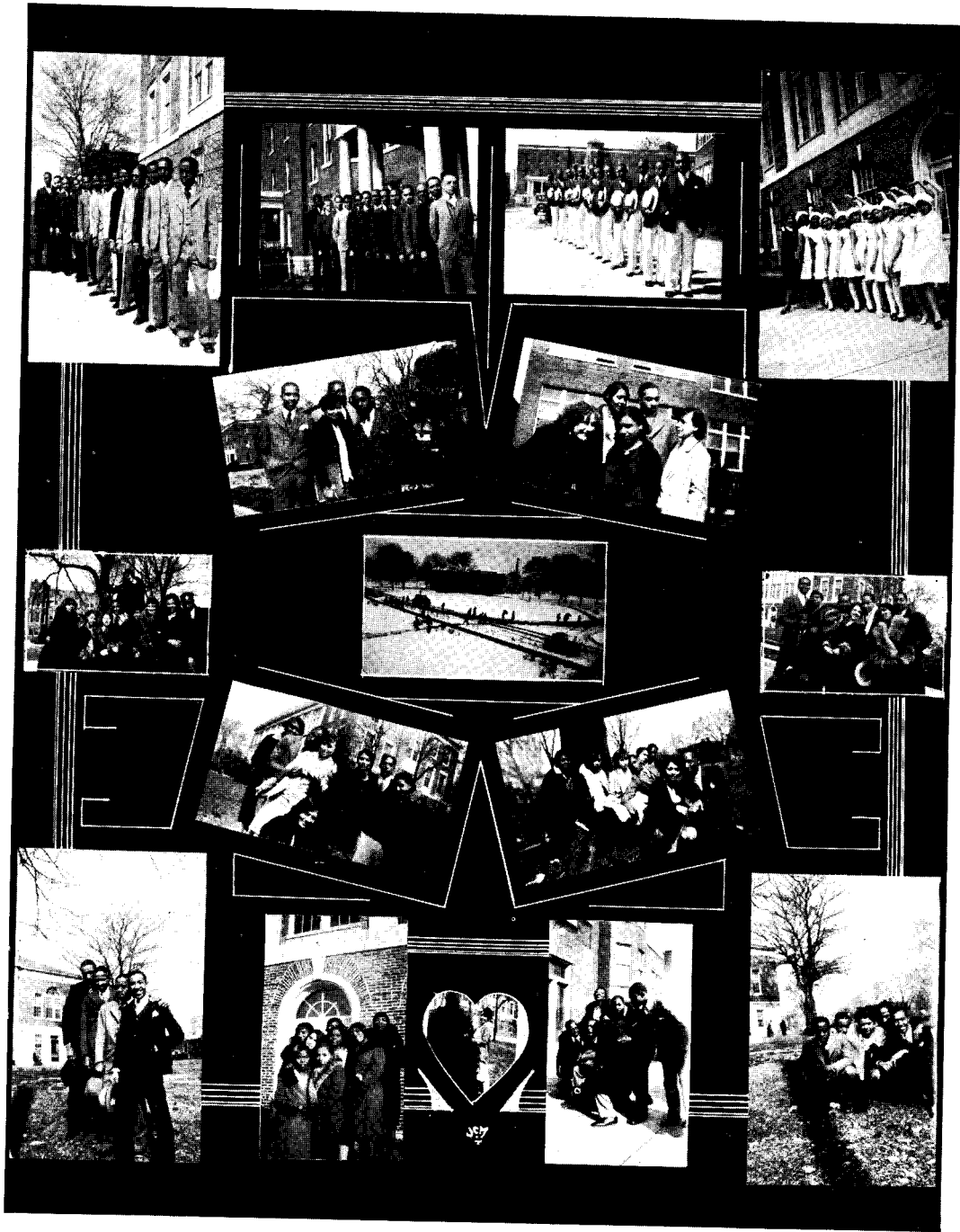
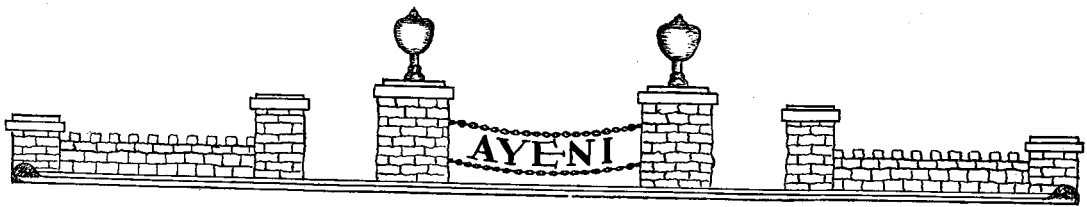


1930

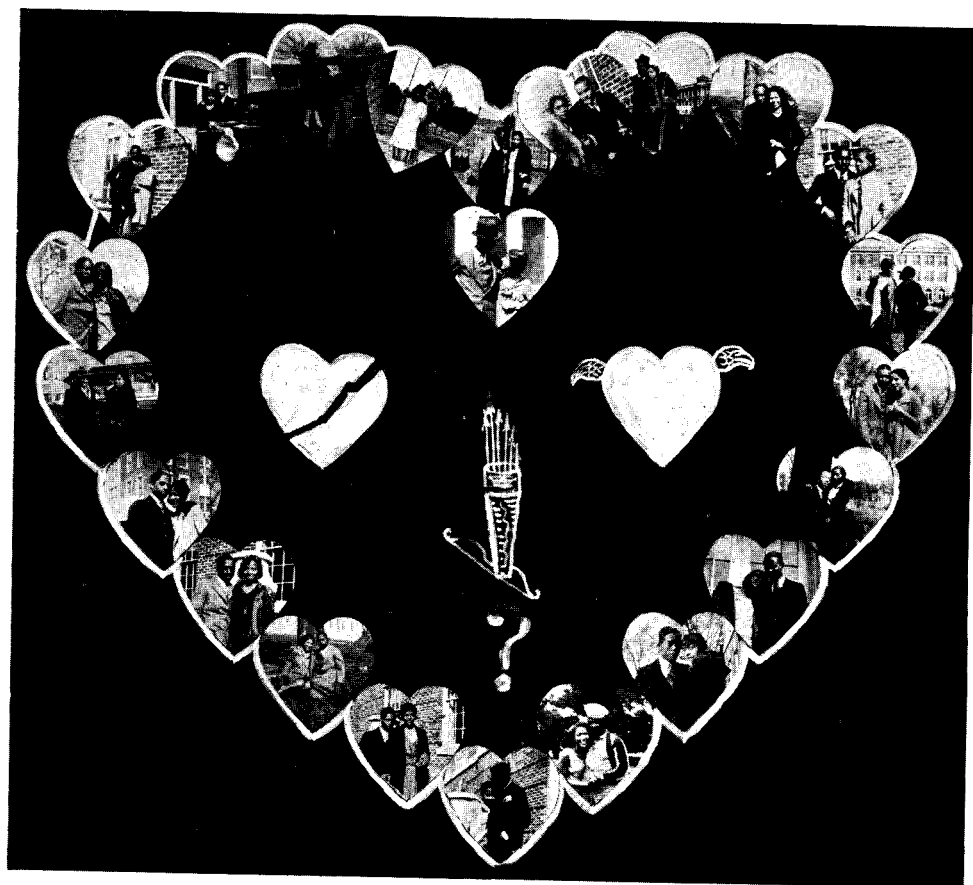
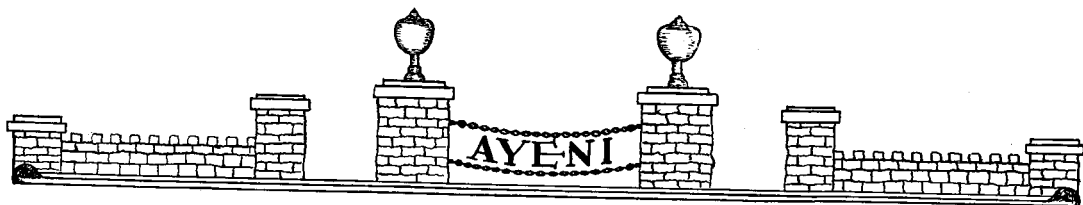


SNAPSHOTS

1930



Campus Groups



Sweethearts on Parade

