

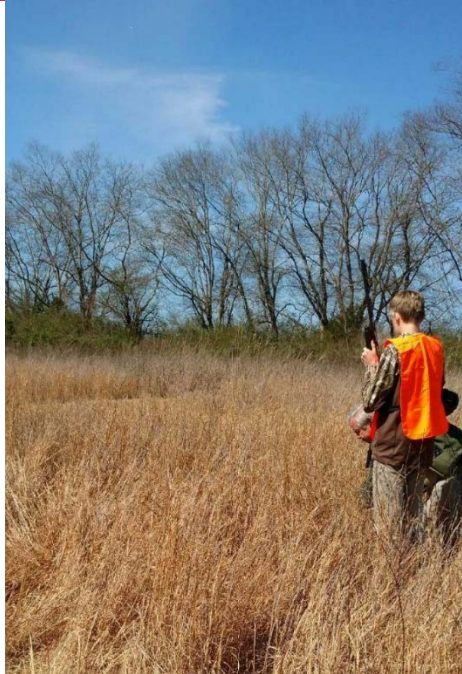


The East Tennessee New Farmer Academy is a 7 month certificate program designed for those with an interest in becoming agricultural entrepreneurs.

Ideal candidates for this program include those who are new to agriculture, those who wish to transition into agriculture from another field, such as military service or private sector work, or those who are looking for a post retirement opportunity.

The program focuses on teaching concepts, providing information, and facilitating the hands on experience and connections needed to build a solid, viable and successful agricultural business.

Plan your farm for profit and recreation.

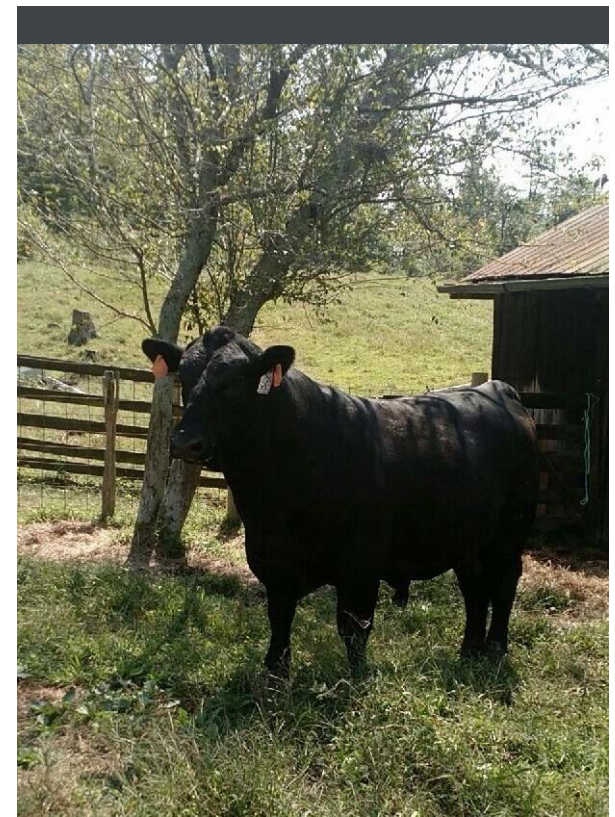


UT EXTENSION
INSTITUTE OF AGRICULTURE
THE UNIVERSITY OF TENNESSEE

TENNESSEE
STATE UNIVERSITY
Cooperative Extension

TSU-14-0138 (A) – 3-17096 – Revised 12/2015. Tennessee State University is an AA/EEO employer and does not discriminate on the basis of race, color, national origin, sex, disability or age in its program and activities. The following person has been designated to handle inquiries regarding the non-discrimination policies: Ms. Tiffany Baker-Cox, director of Equal Opportunity and Affirmative Action, 3500 John A Merritt Boulevard, Nashville, TN 37209, (615) 963-7435

Programs in agriculture and natural resources, 4-H youth development, family and consumer sciences and resource development. University of Tennessee Institute of Agriculture, US Dept. of Ag. And county governments cooperating. UT Extension provides equal opportunities in programs and employment



 **TENNESSEE**
STATE UNIVERSITY

Cooperative Extension

East Tennessee New Farmer Academy

Educational Topics

- Business Plans & Farming Economics
- Livestock Production
- Pasture Management & Weed Control
- Timber / Forest Stand Management
- Vegetable & Fruit Crop production for Farmers Markets or Sale from the farm
- Farm Equipment & Maintenance
- Marketing your products
- Bees, Horses, Wildlife and more!



Our goal is to provide research based information paired with time honored practices and real world examples to introduce you to Agriculture in East Tennessee.

Exploring Opportunities, Setting Goals, Developing Connections and Creating a Plan to be successful in Agriculture in East Tennessee.



All workshops will begin the day at the American Legion Hall in Wartburg Tennessee where we will complete the classroom training component of the program. We will venture from there to multiple locations around our area to experience more E. TN agriculture.

Registration will take place through the UT-TSU Extension Office in Morgan County. The \$175.00 fee will cover materials, lunches and snacks for all 7 workshop dates.

(Scholarships may be available for interested participants. Please ask.)

2018 Workshops will be held from 9:00 am – 4:00 pm Eastern time

- Monday, March 26
- Monday, April 23
- Tuesday, May 29
- Monday, June 25
- Monday July 23
- Monday August 27
- Monday, September 24



*For more information, please contact:
Jenni Goodrich – TSU Extension Agent,
UT TSU Extension Morgan County
jgoodri2@tnstate.edu
423/346-3000*