

<b><u>REMOVE “TSUWIRELESS” WIRELESS NETWORK</u></b>	<b><u>2</u></b>
<b><u>APPLE MAC OS X VERSIONS 10.5 – 10.8</u></b>	<b><u>2</u></b>
<b><u>MICROSOFT WINDOWS 7 (ALSO WINDOWS VISTA)</u></b>	<b><u>3</u></b>
<b><u>APPLE IPHONE/APPLE IPAD - IOS</u></b>	<b><u>3</u></b>
<b><u>ANDROID PHONES</u></b>	<b><u>4</u></b>
<b><u>WINDOWS XP</u></b>	<b><u>5</u></b>
<b><u>CONNECTING TO “TSU_SECURE” WIRELESS NETWORK</u></b>	<b><u>7</u></b>
<b><u>APPLE MAC OS X VERSIONS 10.5 – 10.8</u></b>	<b><u>7</u></b>
<b><u>MICROSOFT WINDOWS 7 (ALSO WINDOWS VISTA)</u></b>	<b><u>8</u></b>
<b><u>APPLE IPHONE/APPLE IPAD - IOS</u></b>	<b><u>8</u></b>
<b><u>ANDROID PHONES</u></b>	<b><u>9</u></b>
<b><u>WINDOWS XP</u></b>	<b><u>10</u></b>
<b><u>CONNECT TO TNSTATE.EDU EMAIL USING MOBILE DEVICE</u></b>	<b><u>11</u></b>
<b><u>APPLE IPHONE/APPLE IPAD - IOS</u></b>	<b><u>11</u></b>
<b><u>ANDROID PHONES</u></b>	<b><u>14</u></b>

# Remove “tsuwireless” Wireless Network

---

Tsuwireless is meant as a guest account and has normally has severely limited capabilities. Most of what students and faculty need to accomplish would best be served by connecting to the secure wireless network called “tsu\_secure”. To keep your computer or mobile device from automatically trying to connect to “tsuwireless”, follow the steps outlined for your particular device or operating system.



## Apple Mac OS X versions 10.5 – 10.8

- Click on the **Apple** icon in the top left-hand corner of the screen in the Menu Bar.



- Select **System Preferences**.



- In System Preferences, click on the **Network** icon.



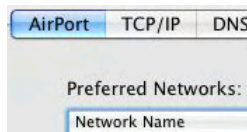
- In the Network preference pane, select "**Airport**" from the list on the left.



- Click the button "**Turn Airport Off**" and then click the "**Advanced**" button.



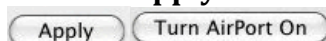
- Under the Airport tab, there will be a list titled Preferred Networks listing the network name and security type.



- Click the "**tsuwireless**" network to select it.
- Once you've selected it, press the **Minus** button below the list. Then click the **OK** button.



- Click the **Apply** button and then click button "**Turn Airport On**"



- From the popup menu, select the "**tsu\_secure**" wireless network. See *Connecting to “tsu\_secure” wireless network* (page 7) in this packet.



## Microsoft Windows 7 (also Windows Vista)

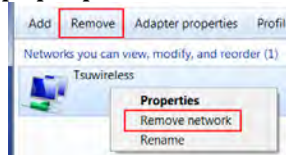
- Open the **Start Menu** and open the **Control Panel**.
- Click on **Network and Internet**.
- Click on **Network and Sharing Center**.
- In the section for “tsuwireless” click on “Disconnect” (in Windows Vista) or “Connect or disconnect” (in Windows 7) . Choose to disconnect from “tsuwireless”.



- In **Network and Sharing Center**, click the link for **Manage Wireless Networks** on the left side.



- Select **Tsuwireless** in the list and choose **Remove** from the top menu or right-click **Tsuwireless** in the list and choose **Remove network** from the pop-up menu. Close this window.



- See *Connecting to “tsu\_secure” wireless network* (page 8) in this packet

## iPhone iPad

## Apple iPhone/Apple iPad - iOS

- Go to Home screen and select the **Settings** app.



- Tap **Wi-Fi**. If Wi-Fi is off, turn it on by tapping the on/off icon.



- Next to “tsuwireless” tap the white arrow in the blue circle.



- Choose “Forget This Network”.

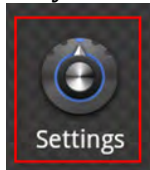


- Tap Wi-Fi/Wi-Fi Networks to go back a step.
- The recommended network is “tsu\_secure”. See *Connecting to “tsu\_secure” wireless network* (page 8) in this packet.

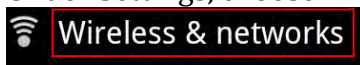


## Android phones

- On your Android device, select the **Settings** icon.



- Under Settings, choose **Wireless & networks**.



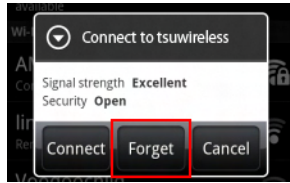
- Next, select **Wi-Fi settings**.



- If Wi-Fi is not already turned on, tap the check mark by Wi-Fi to turn it on. When **Wi-Fi** is enabled, available networks will appear below. Choose “tsuwireless”.



- You have most likely connected to “tsuwireless” in the past unless this is a new device. Choose **“Forget”**.

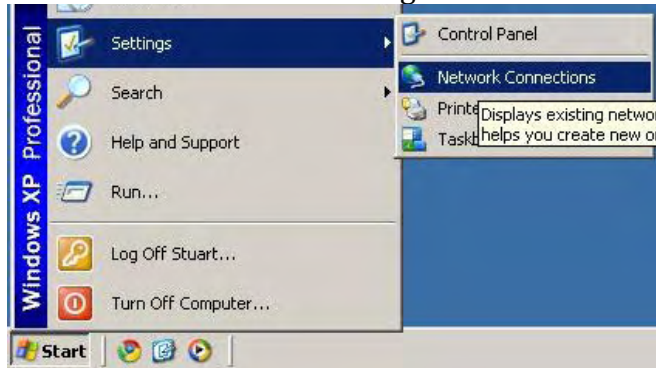


- In the “Wi-Fi networks” you should see “tsu\_secure”. The recommended network is “tsu\_secure”. See *Connecting to “tsu\_secure” wireless network* (page 9) in this packet



## Windows XP

- Click on the **Start Menu** and go to **Control Panel > Network Connections**.



- Right click on your wireless adapter and select **Properties**.



- Click on the **Wireless Networks** tab.
- Click on **tsuwireless** and click **Remove** button. Click **OK** to save changes.
- Right click on your network adapter (Wireless Network Connection) and select **View Available Wireless Networks**. The recommended network is

“tsu\_secure”. See *Connecting to “tsu\_secure” wireless network* (page 10) in this packet.

# Connecting to “tsu\_secure” wireless network

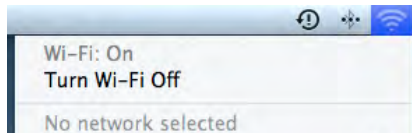
---

Tsuwireless is meant as a guest account and has normally has severely limited capabilities. Most of what students and faculty need to accomplish would best be served by connecting to the secure wireless network called “tsu\_secure”. Fetching email (whether personal or University) , social media use, and most any other protected browsing is done under the “tsu\_secure” wireless network.

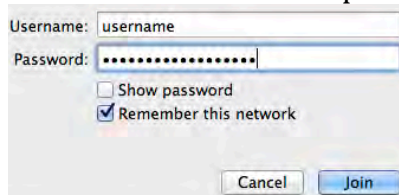


## Apple Mac OS X versions 10.5 – 10.8

- Click on the Wi-Fi icon located in the upper right of your screen, just to the left of the time. Select the network **tsu\_secure** from the list of wireless networks.





- OS X will prompt you for your TNSTATE credentials. Please enter your TNSTATE username and password and click **Join**.

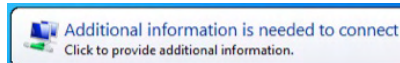


- When prompted by the Verify Certificate window, click the **Continue** button.
- In order to save these changes to your system, OS X will prompt you for a local administrator username and password. Enter the administrator username and password and click **Update Settings**.
- You can now verify that you're connected to secure wireless by viewing the Wi-Fi signal meter in the upper right-hand corner of your display.



## Microsoft Windows 7 (also Windows Vista)

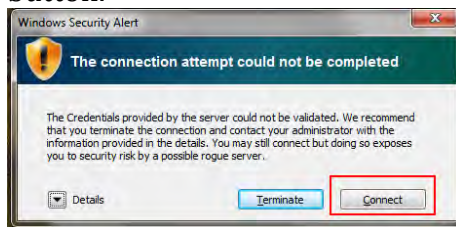
- Open Connect to a Network by clicking the network icon (  or  ) in the notification area. You should receive a notification asking for additional information. Click this notification anywhere to open the password dialog box.



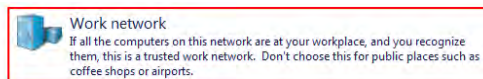
- Windows will prompt you for your TNSTATE credentials. Please enter your TNSTATE username and password and click **OK**.



- When prompted by the Windows Security Alert window, click the **Connect** button.



- Choose to make this a “Work” network.



## iPhone iPad

## Apple iPhone/Apple iPad - iOS

- Go to Home screen and select the **Settings** app.





- Tap **Wi-Fi**. If Wi-Fi is off, turn it on by tapping the on/off icon.



- Choose the tsu\_secure wireless network. iOS will prompt you for your TNSTATE credentials. Please enter your TNSTATE username and password and click Join.



- When prompted by the Certificate window, click the **Accept** button.

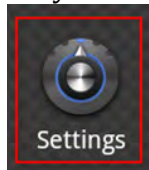


- To test, access Facebook, Twitter, Youtube or check your TNSTATE.EDU email. You should have access to all of these if tsu\_secure connection is active.

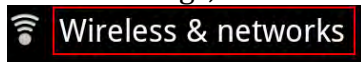


## Android phones

- On your Android device, select the **Settings** icon.



- Under Settings, choose **Wireless & networks**.

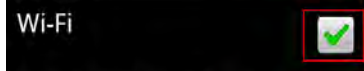


- Next, select **Wi-Fi settings**.

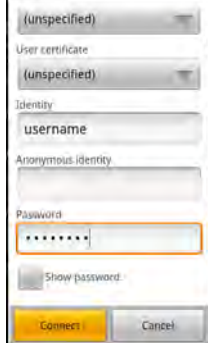


- If Wi-Fi is not already turned on, tap the check mark by Wi-Fi to turn it on. Tap **Wi-Fi settings**. When Wi-Fi is enabled, available networks will appear

below. Tap on **"tsu\_secure"**, and then tap on **Connect to network**.




- A connection screen should appear with a variety of security options. Leaving all other options as default (EAP method should be PEAP, and all others should be "None" or "unspecified"), enter your TNSTATE username for "Identity" and your TNSTATE password for "Password". Tap **Connect**.



- Under **tsu\_secure**, you should now see the word "Connected". You are now connected to TSU's secure wireless network.



## Windows XP

- Right-click the network connection icon  in the notification area, and then click **View Available Wireless Networks**. In Connect to Wireless Network, under Available Networks, click the wireless network called **"tsu\_secure"**. You should receive a notification asking for additional information.
- Windows will prompt you for your TNSTATE credentials. Please enter your TNSTATE username and password and click **OK**.
- When prompted by the Certificate Alert window, click the **Connect** button.

# Connect to TNSTATE.EDU email using mobile device

---

iPhone  
iPad

[Apple iPhone/Apple iPad - iOS](#)

## *Summary*

This article explains how to setup a TNSTATE.EDU account on your iPhone, iPad or iPod touch.

## **Products Affected**

iPad, iPhone, iPod touch

Follow these steps to setup your Exchange ActiveSync account on your Apple mobile device (make sure you have a 3 bar WI-FI signal):

1. Tap **Settings > Mail, Contacts, Calendars > Add Account > Microsoft Exchange**.
2. Enter the information in the fields below, then hit **Next** (continued on next page)

Carrier 9:42 AM

Enter your Exchange account information

Cancel Exchange Next

Email your-email@tnstate.edu

Server email.tnstate.edu

Domain tnstate.edu

Username your-user-name

Password ●●●●●●●●

Description Exchange

**Email:** enter your full tnstate.edu email address

**Server:** email.tnstate.edu

**Domain:** tnstate.edu

**Username:** the username you use to log into your computer on campus, i.e. Your email address without the '@tnstate.edu'.

**Password:** your computer password (this HAS to be absolutely correctly typed in and it is case sensitive)

**Description:** Exchange

3. Your device will now try to locate your Exchange Server. Make sure you have a decent amount of Wi-Fi signal bars.
4. Choose which content you would like to synchronize: Mail, Contacts, and Calendars. Tap **Save** when finished.



**Note:** To modify your exchange settings, Tap **Settings** > **Mail, Contacts, Calendars**, select your Exchange account, and tap **Account Info**.

5. To check Email tap the **Mail** icon.





## Android phones

# Set up Microsoft Exchange email on an Android

1. From the **Applications** menu, select **Email**. This application may be named **Mail** on some versions of Android.
2. Type your full email address, for example me@tnstate.edu, and your password, and then select **Next**.
3. Select **Exchange account**. This option may be named Exchange ActiveSync on some versions of Android.
4. Enter the following account information and select Next.
  - **Domain\Username** Type your full email address in this box. If **Domain** and **Username** are separate text boxes in your version of Android, type tnstate.edu in the Domain box and type your full email address in the Username box.

NOTE On some versions of Android, you must use the domain\username format. For example, if your email address is me@tnstate.edu, type tnstate.edu\me@tnstate.edu. Your username is your full email address.

  - **Password** Use the password that you use to access your account.
  - **Exchange Server** email.tnstate.edu
5. As soon as your phone verifies the server settings, the Account Options screen displays. Make sure you have a decent amount of Wi-Fi signal bars. The options available depend on the version of Android on your device. The options may include the following:
  - **Email checking frequency** The default value is Automatic (push). When you select this option, email messages will be sent to your phone as they arrive. We recommend only selecting this option if you have an unlimited data plan.
  - **Amount to synchronize** This is the amount of mail you want to keep on your mobile phone. You can choose from several length options, including One day, Three days, and One week.
  - **Notify me when email arrives** If you select this option, your mobile phone will notify you when you receive a new email message.
  - **Sync contacts from this account** If you select this option, your contacts will be synchronized between your phone and your account.
6. Select **Next** and then type a name for this account and the name you want displayed when you send e-mail to others. Select **Done** to complete the email setup and start using your account.

**NOTE** You may need to wait ten-to-fifteen minutes after you set up your account before you can send or receive e-mail.