

Welcome New Faculty

Curtis Johnson, Ph.D.
Chief of Staff
Tennessee State University
August 11, 2017



Departments/Area



Auxiliary Services
Emergency Management
Events and Conference Services
Xerox Center
Parking
Copier Services
Space Management
Campus Safety
Campus Master Plan Implementation
Bookstore
Licensing



Campus Amenities



- Dining and Food Options
 - Main Cafeteria (Campus Center)
 - Faculty/Staff Dining (Campus Center)
 - Starbucks (Campus Center)
 - Chic-Fil-A (Campus Center)
 - Pizza Hut (Campus Center)
 - Grill (AWC and Rudolph)
 - Catering
 - POD (main Campus and AWC)
- Post Office
- Credit Union



A Safe Campus



- [Safety Video](#)

Has instituted a policy requiring persons on campus to wear an ID.

Numerous buildings doors have been retrofitted to require access with a valid ID approved for the area.



ENHANCEMENTS

5

- Since 2013 the University has implemented numerous upgrades to enhance safety for the students and staff at TSU.
- By summer 2018 almost six (6) million dollars will have been invested in safety at TSU.

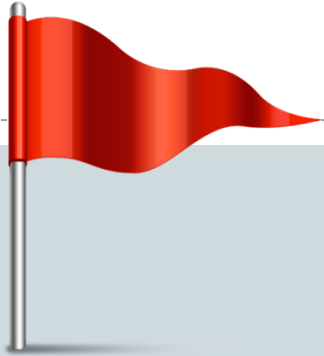




What is the Red Flag System?

The “Red Flag System” is a system used to gather information about suspicious activity/behavior on Tennessee State campuses.





What to Report?

- All suspicious behaviors or actions as well as any criminal (non-emergency) acts.
- Knowledge of information or incidents that could cause harm.
- Knowledge of information or acts that could threaten university internal intelligence, information, reputation, and/or property as well as violations of staff or students' code of conduct.
- Any high risk behaviors such as under the influence of drugs or alcohol.
- Expressions by others of feelings of depression, reduction of self worth, and/or uselessness including suicidal symptoms.



Tennessee State University Red Flag

To begin, choose one of the options below.

- [Submit a new incident](#)
- Login below to manage an existing incident.

Username:

Password:

[I forgot my password](#)

What To Report

Red Flag is used to gather information about suspicious activity on campus. Some items to report include the following:

- Suspicious Behavior
- Knowledge of information that could damage university reputation
- Threats to others or themselves

If this is an emergency, call 911 BEFORE submitting a report.



TSU Home Page

9



Instagram Photos



Useful Links

- about TSU
- events management
- support TSU
- alumni
- current students
- faculty & staff
- future students
- parents & families
- visitors
- calendars
- contact us
- directions
- work @ TSU

Social Media



3500 John A. Merritt Boulevard
Nashville, TN 37209
Tel: (615) 963-5000

Tennessee State University is an EEO/AA employer and does not discriminate on the basis of race, national origin, gender, age, religion or disability in its programs and activities. [Learn more about Tennessee State University's EEO/AA policies.](#)



Adding a New Incident

1. Incident Details

2. Involved Parties and Attachments

3. Contact Information

* Describe what you observed, using specific detail whenever possible.

Hint:

No hint available.

* On or around what date did this occur?

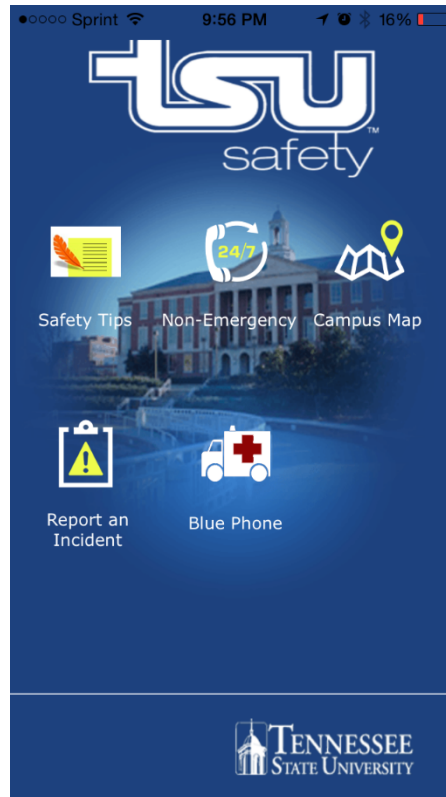
 

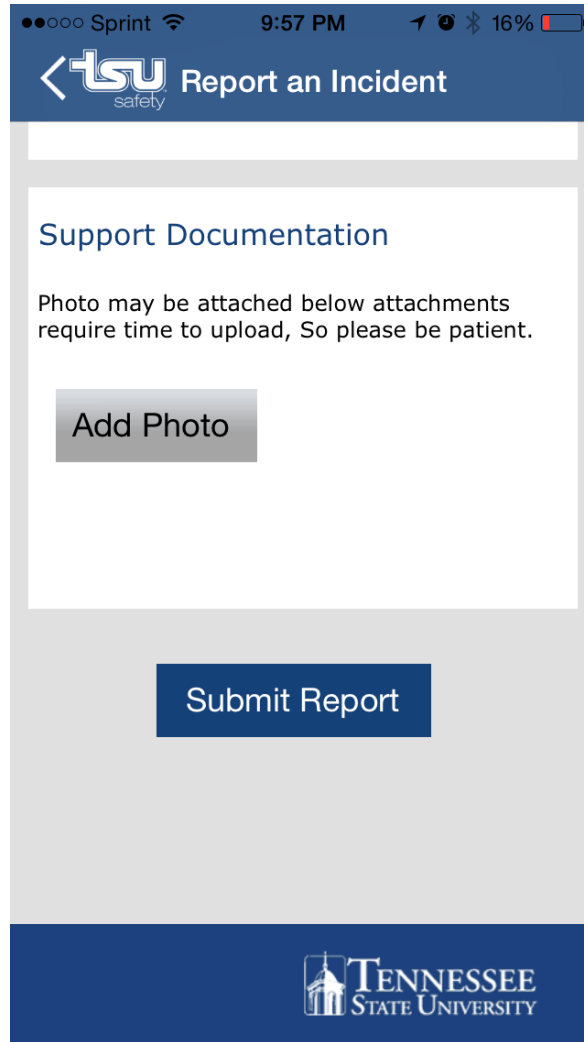
* On which campus did this occur?

[Involved Parties and Attachments x](#)

TSU Safety App

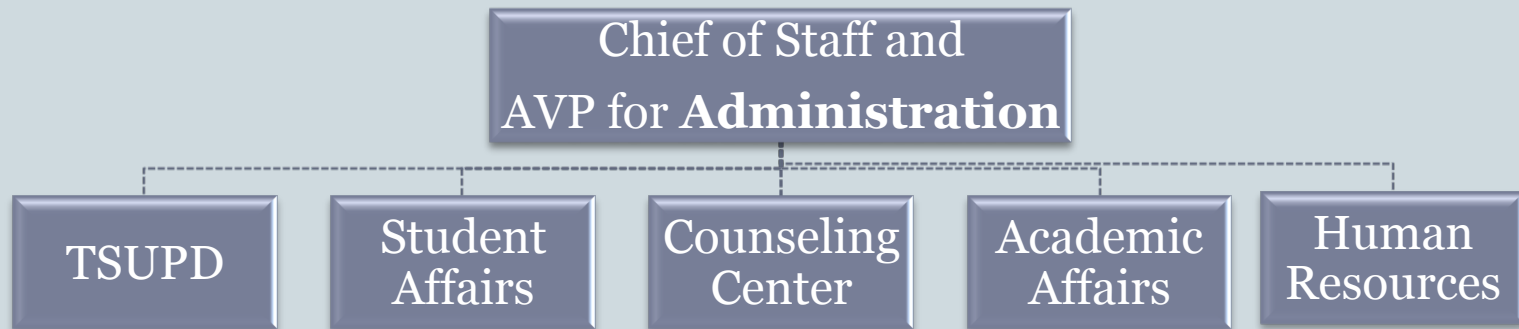
11





Who receives the information?

13



Parking



- Parking/Traffic Services has hired additional personnel to monitor parking lots and better manage campus traffic.
- Parking lots have been designated and is enforced.



The End



Questions
and
Answers (Possibly)