

TENNESSEE STATE UNIVERSITY ORGANIZATIONAL CHART

VICE PRESIDENT for ACADEMIC AFFAIRS

College of Agriculture

Family & Consumer Sciences Early Learning Center Agricultural Sciences

College of Business

Accounting & Law Business Administration
Economics & Finance Business Information Systems

College of Education

Educational Leadership Teaching and Learning Psychology
Teacher Education & Student Services

College of Engineering

Civil And Architectural Engineering Mechanical Engineering Computer Science
Electrical & Computer Engineering Aeronautical & Industrial Technology

College of Health Sciences

Physical Therapy Human Performance & Sports Science Occupational Therapy
Public Health, Health Administration & Health Science Respiratory Care & Health Information Management Speech Pathology
Dental Hygiene School of Nursing

College of Liberal Arts

Art Criminal Justice Communications
Music History, Geography & Political Science Languages, Literature and Philosophy
Music: Band Sociology Interdisciplinary Studies

College of Life and Physical Science

Chemistry Biological Sciences Mathematical Sciences
Massie Chair of Excellence / TLSAMP

College of Public Service

Social Work and Urban Studies Public Administration

AFROTC

Community College Initiatives

Libraries and Media Centers

School of Graduate & Professional Studies

Honors College

International Affairs

Center of Entrepreneurship and Economic Development

TN Small Business Development Center

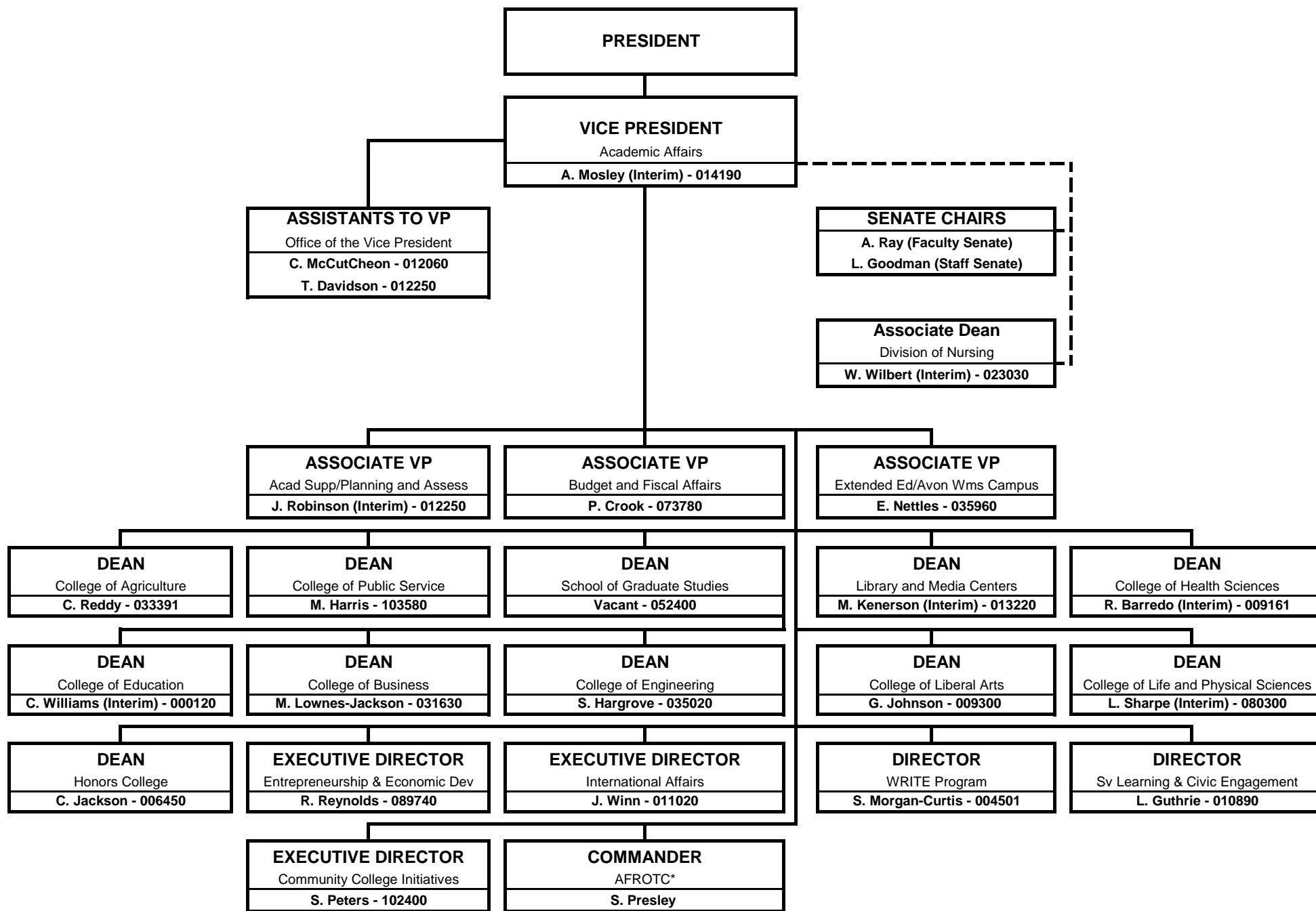
Center for Extended Education & Public Service

Distance Education & Multimedia Service

Service Learning

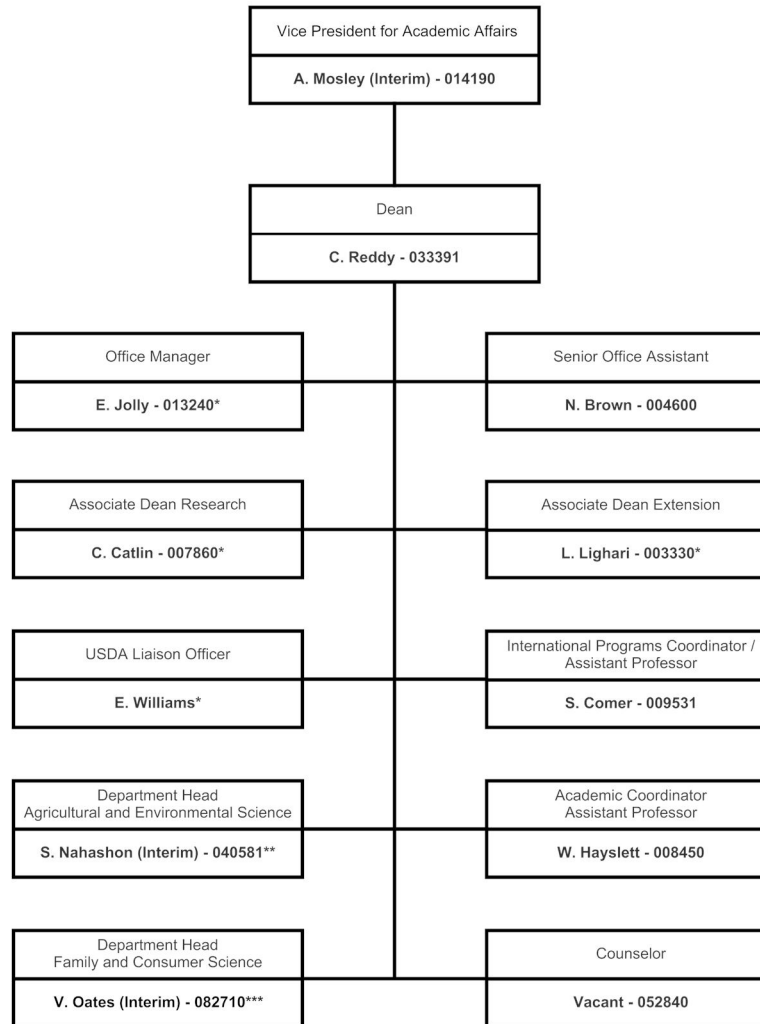
WRITE

TENNESSEE STATE UNIVERSITY
 ORGANIZATIONAL CHART
ACADEMIC AFFAIRS
 2017-2018



*Non-institutional funds.

Tennessee State University
 Organizational Chart
 COLLEGE OF AGRICULTURE
 2017-2018
 ORG: 13500



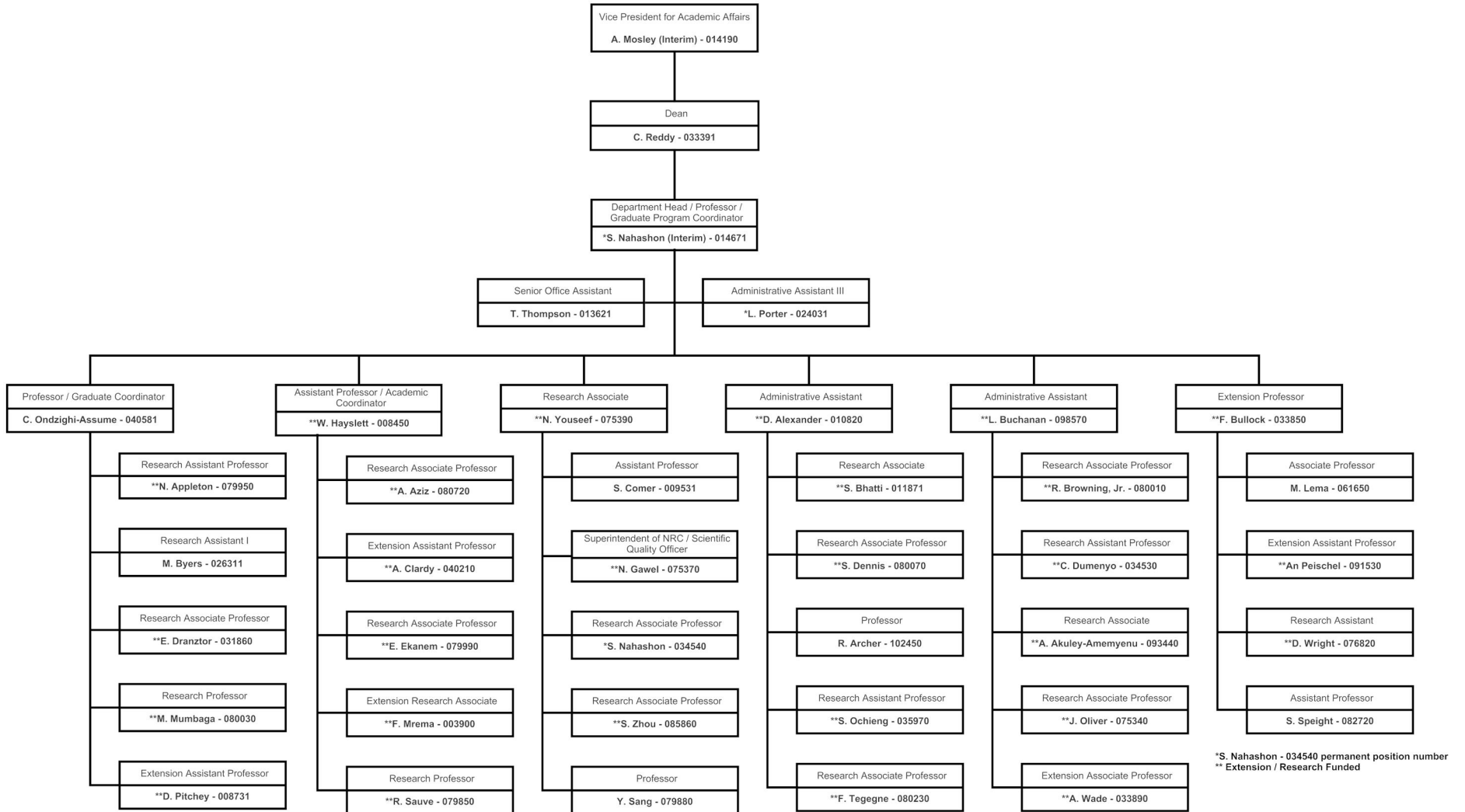
* External Funded

**S. Nahashon - 034540 permanent position number

***V. Oates - 103070 permanent position number

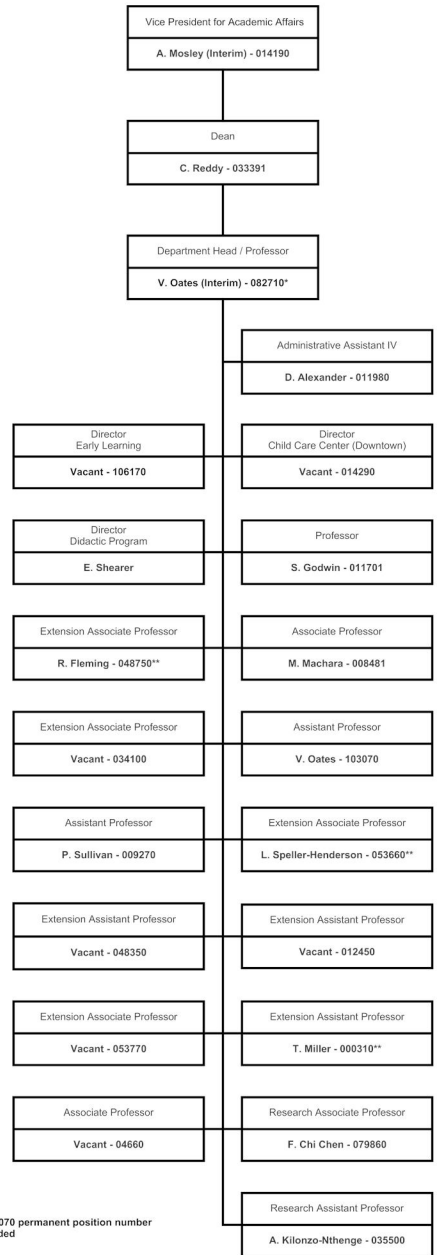
MAIN MENU

Tennessee State University
Organizational Chart
COLLEGE OF AGRICULTURE
Agriculture & Environmental Sciences
2017-2018
ORG: 13510, 199200, 199300



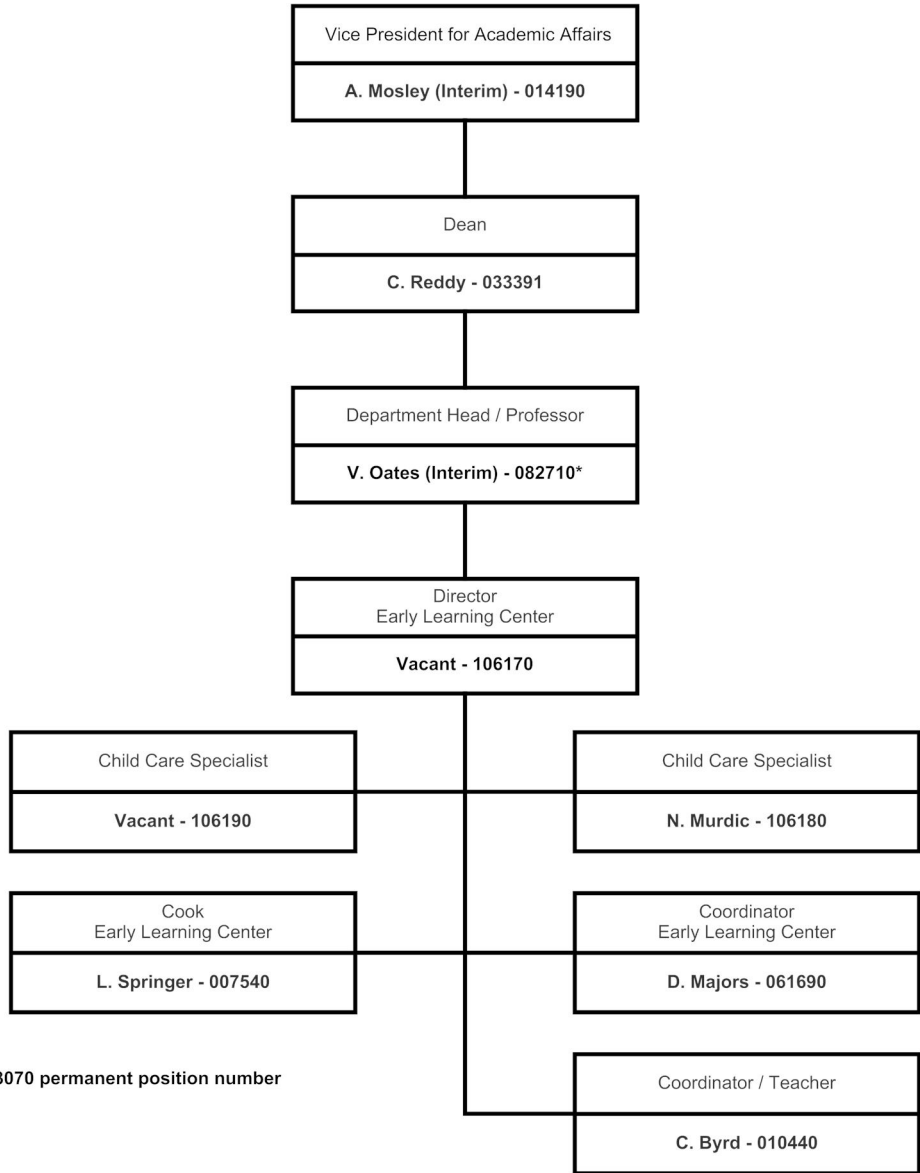
*S. Nahashon - 034540 permanent position number
** Extension / Research Funded

Tennessee State University
 Organizational Chart
 COLLEGE OF AGRICULTURE
 Family and Consumer Science
 2017-2018
 ORG: 13520, 199200, 199300, 50230



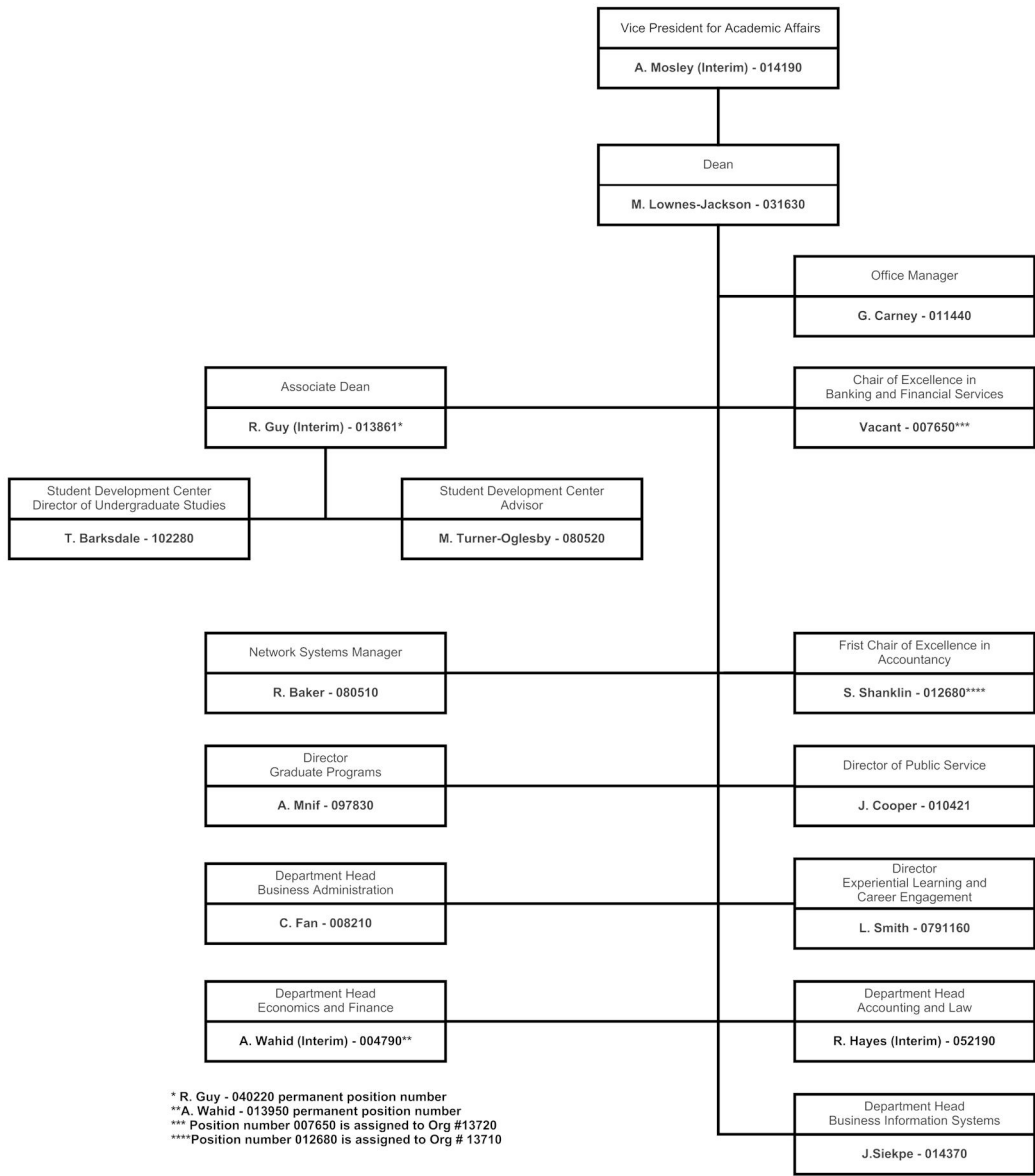
*V. Oates - 103070 permanent position number
 **External Funded

Tennessee State University
Organizational Chart
COLLEGE OF AGRICULTURE
Early Learning Center
2017-2018
ORG: 13510



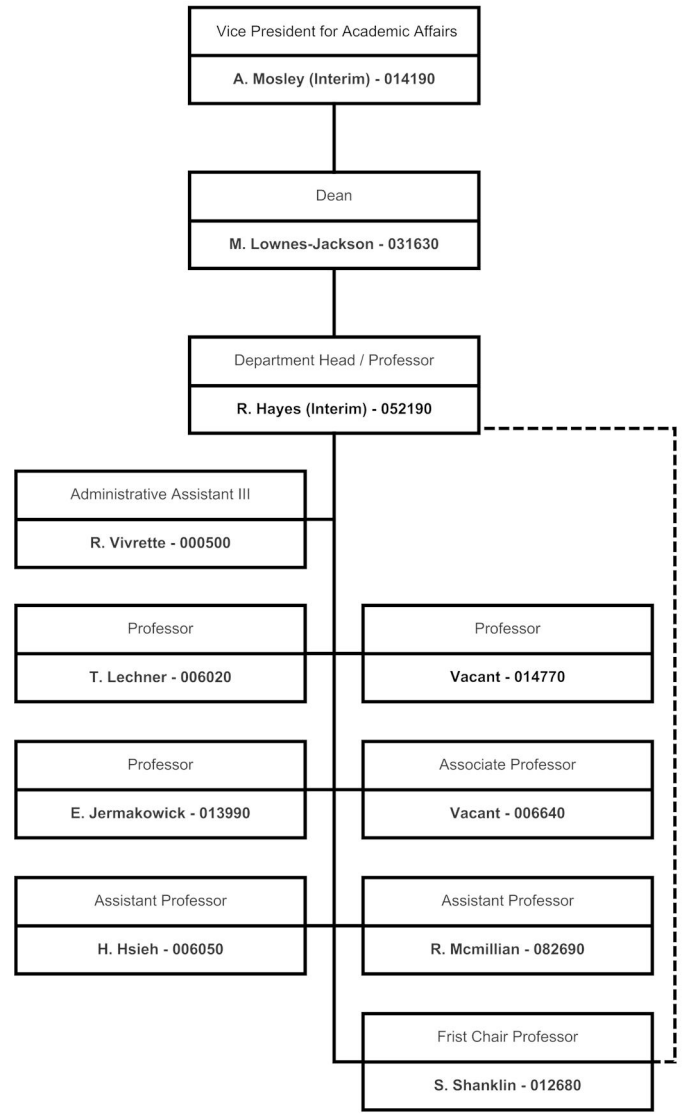
*V. Oates - 103070 permanent position number

Tennessee State University
Organizational Chart
COLLEGE OF BUSINESS
2017-2018
ORG: 13700, 13710, 13720, 13730, 13740

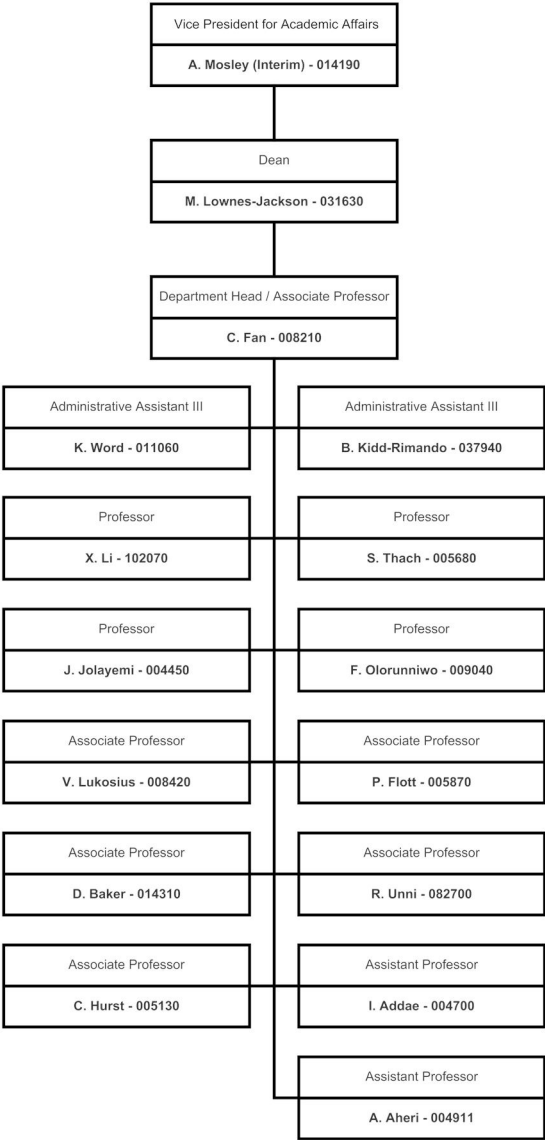


* R. Guy - 040220 permanent position number
 **A. Wahid - 013950 permanent position number
 *** Position number 007650 is assigned to Org #13720
 ****Position number 012680 is assigned to Org # 13710

Tennessee State University
Organizational Chart
COLLEGE OF BUSINESS
Accounting and Law
2017-2018
ORG: 13710

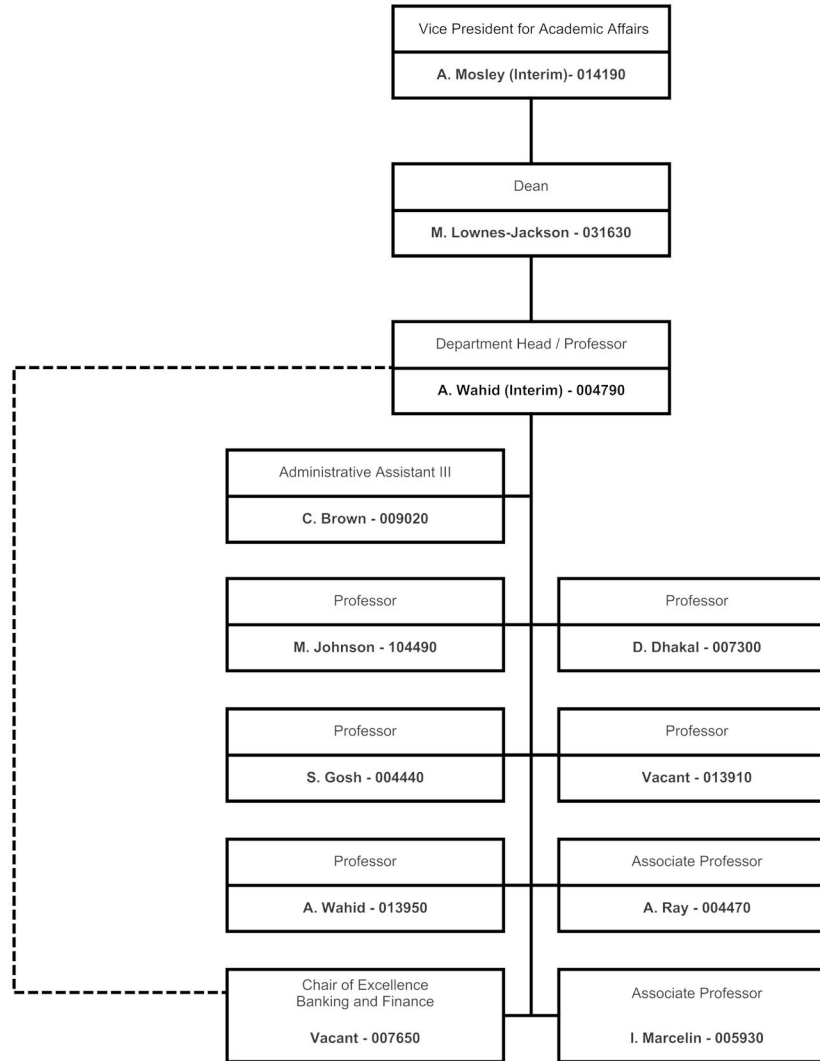


Tennessee State University
 Organizational Chart
 COLLEGE OF BUSINESS
 Business Administration
 2017-2018
 ORG: 13730

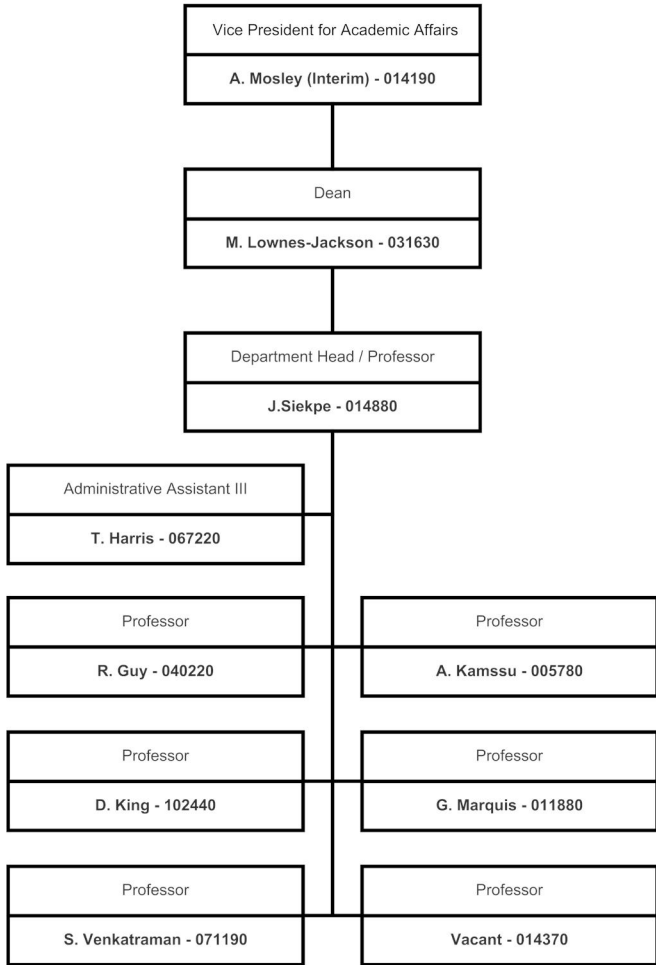


*S. Shanklin - 012680 permanent position number

Tennessee State University
Organizational Chart
COLLEGE OF BUSINESS
Economics and Finance
2017-2018
ORG: 13720

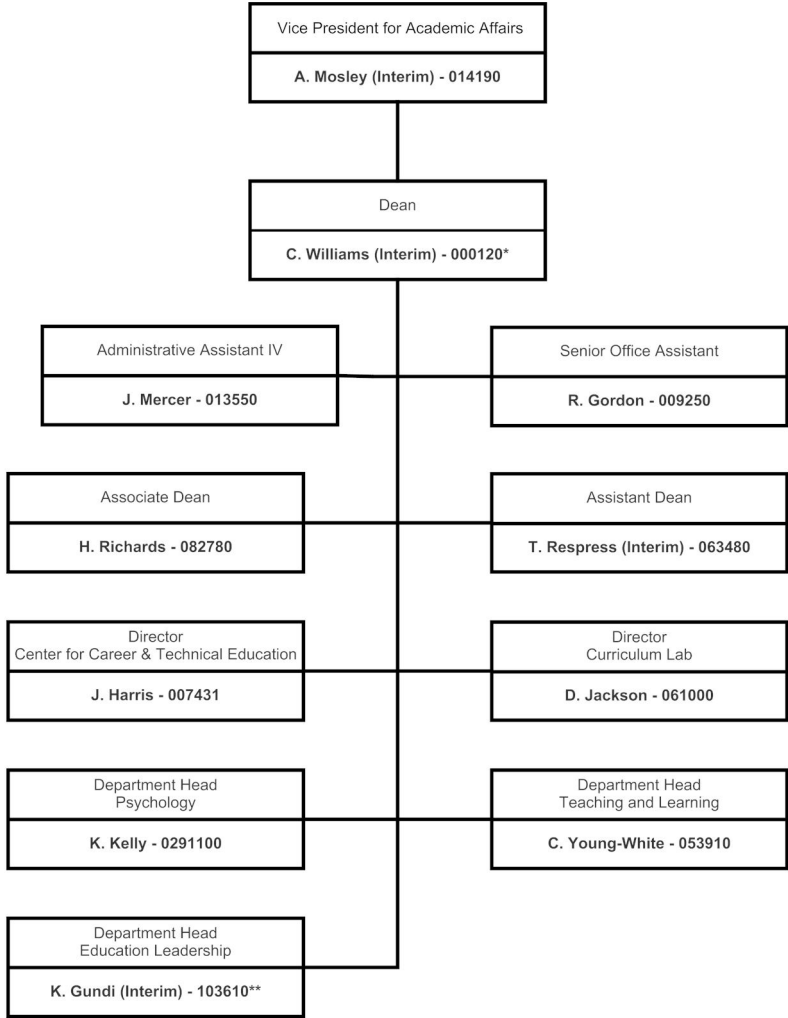


Tennessee State University
Organizational Chart
COLLEGE OF BUSINESS
Business Information Systems
2017-2018
ORG: 13740



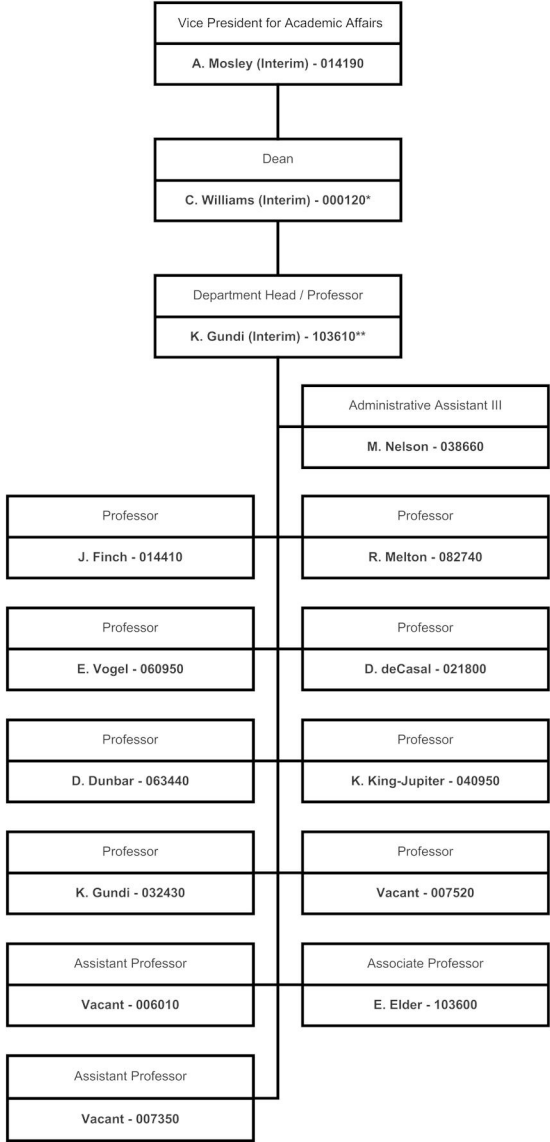
*S. Shanklin - 012680 permanent position number

Tennessee State University
 Organizational Chart
 COLLEGE OF EDUCATION
 2017-2018
 ORG: 13300, 19525, 13302



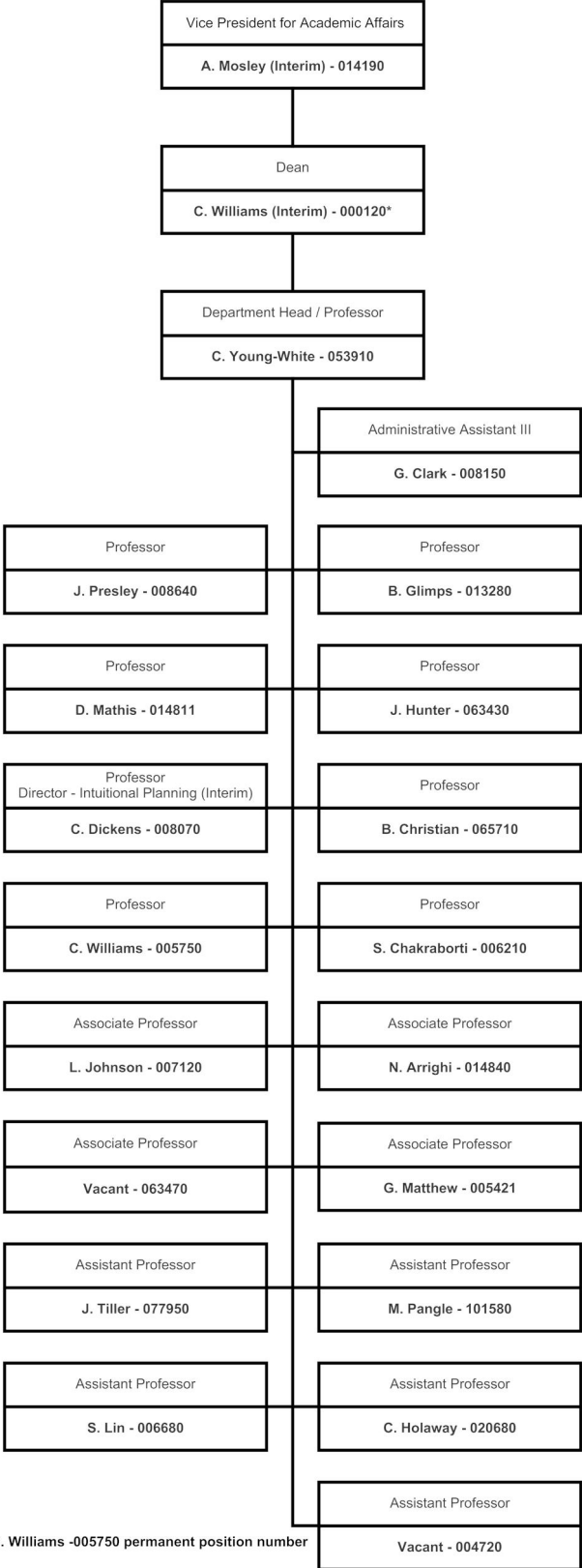
* C. Williams - 005750 permanent position number
 **K. Gundi - 032430 permanent position number

Tennessee State University
 Organizational Chart
 COLLEGE OF EDUCATION
 Educational Leadership
 2017-2018
 ORG: 13302



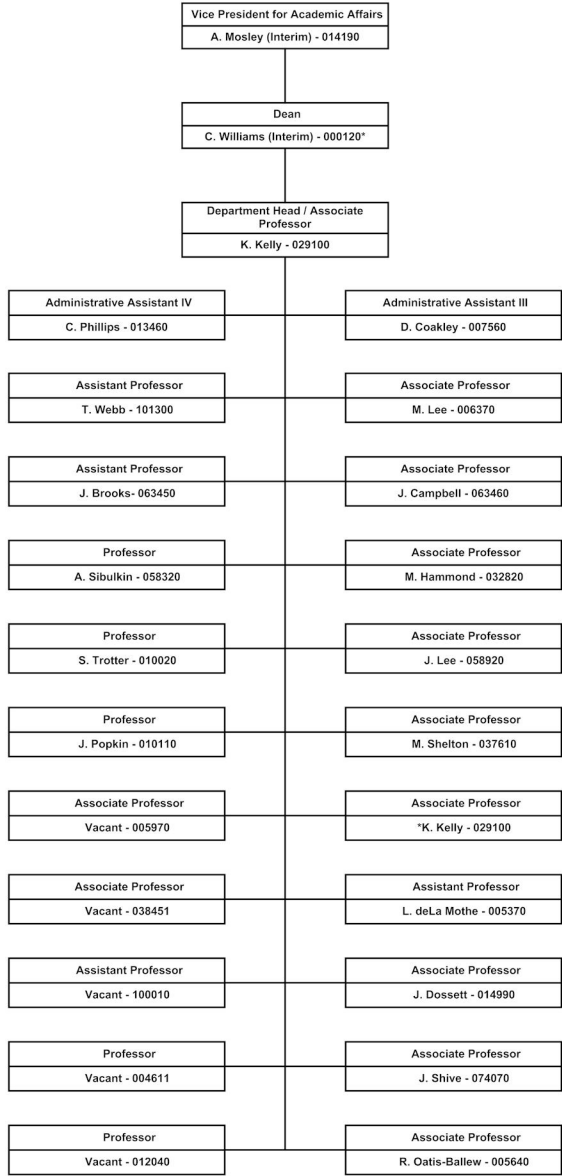
* C. Williams -005750 permanent position number
 ** K. Gundi - 032430 permanent position number

Tennessee State University
 Organizational Chart
 COLLEGE OF EDUCATION
 Teaching and Learning
 2017-2018
 ORG: 13304



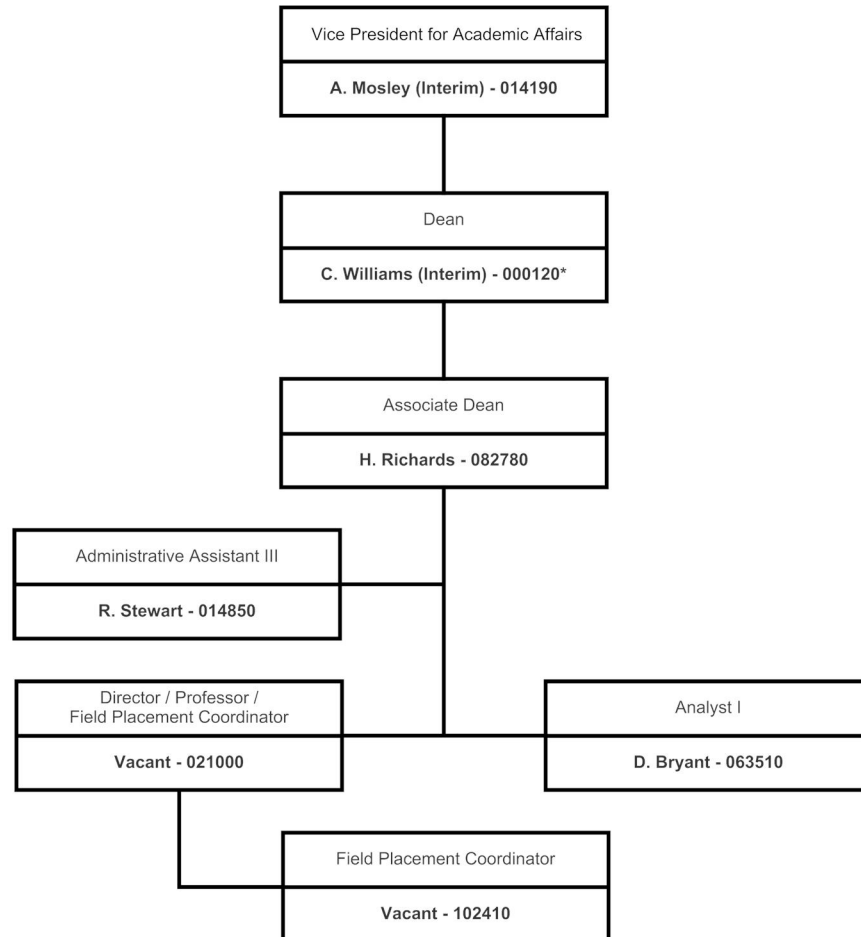
* C. Williams -005750 permanent position number

Tennessee State University
 Organizational Chart
 ACADEMIC AFFAIRS
 COLLEGE OF EDUCATION
 Department of Psychology
 2017-2018
 ORG: 13310



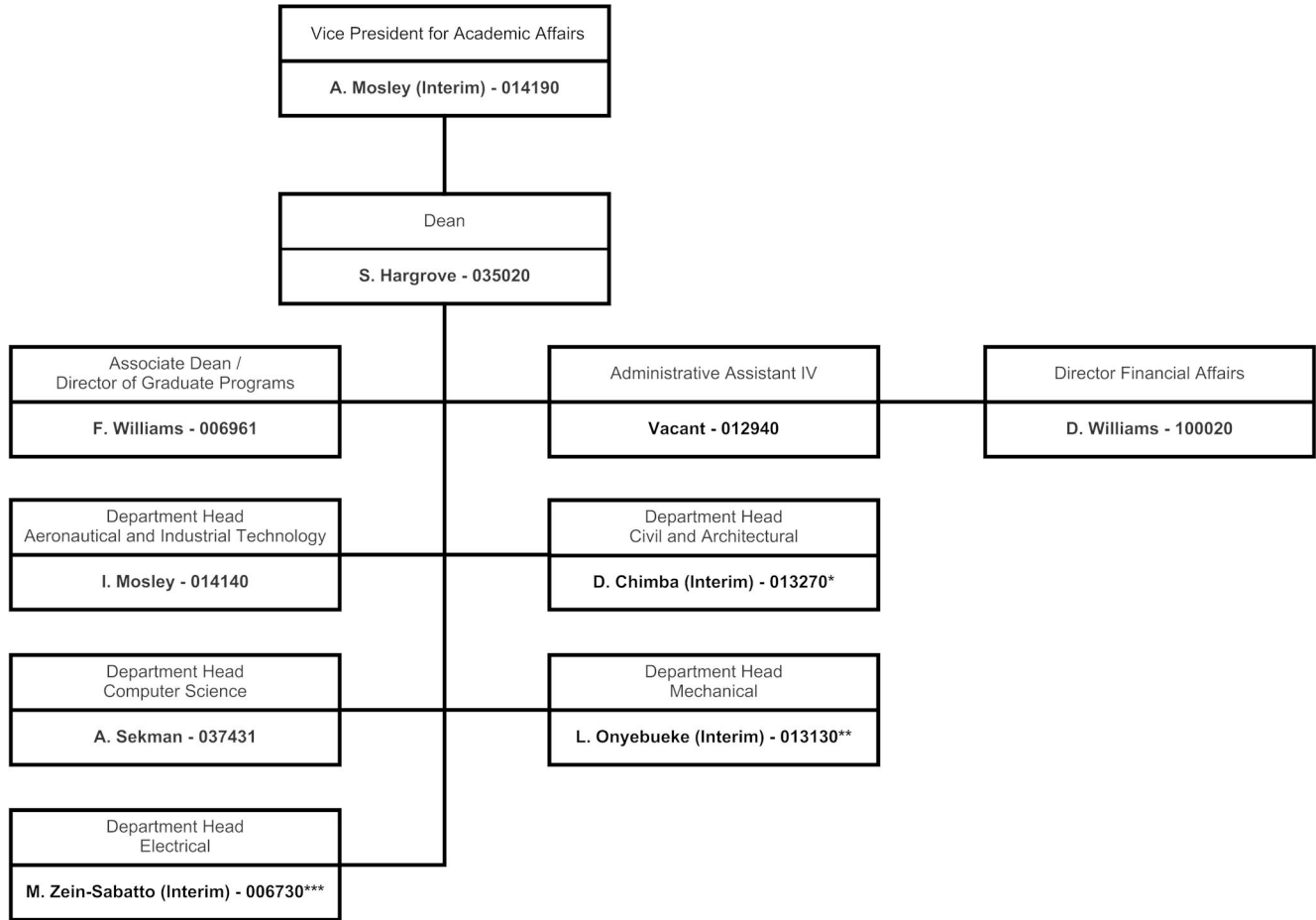
* C. Williams - 005750 permanent position number

Tennessee State University
Organizational Chart
COLLEGE OF EDUCATION
Teacher Education and Student Services
2017-2018
ORG: 13306



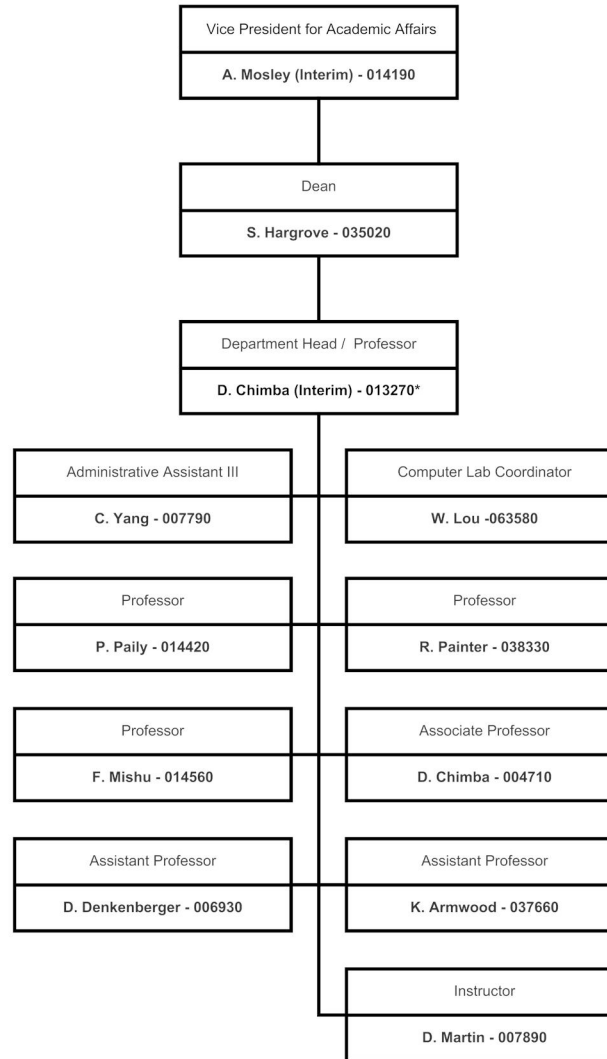
* C. Williams - 005750 permanent position number

Tennessee State University
Organizational Chart
COLLEGE OF ENGINEERING
2017-2018
ORG: 13400



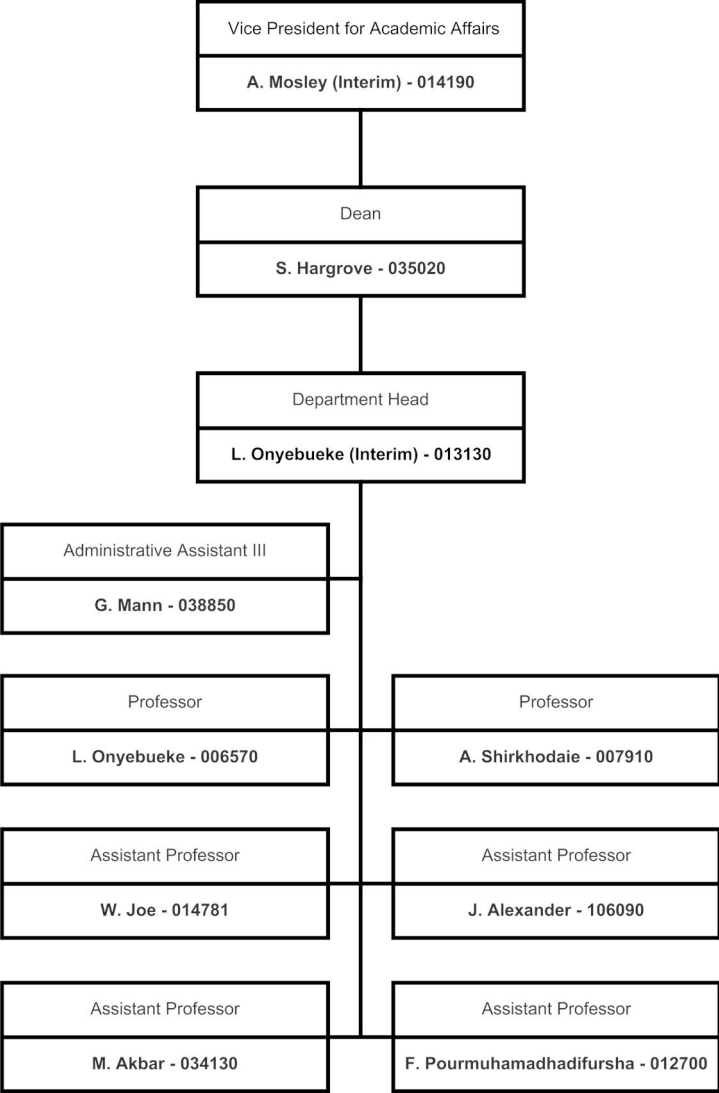
* D. Chimba - 004710 permanent position number
 **L. Onyebueke - 006570 permanent position number
 ***M. Zein-Sabatto - 020740 permanent position number

Tennessee State University
Organizational Chart
COLLEGE OF ENGINEERING
Civil and Architectural
2017-2018
ORG: 13404, 13402



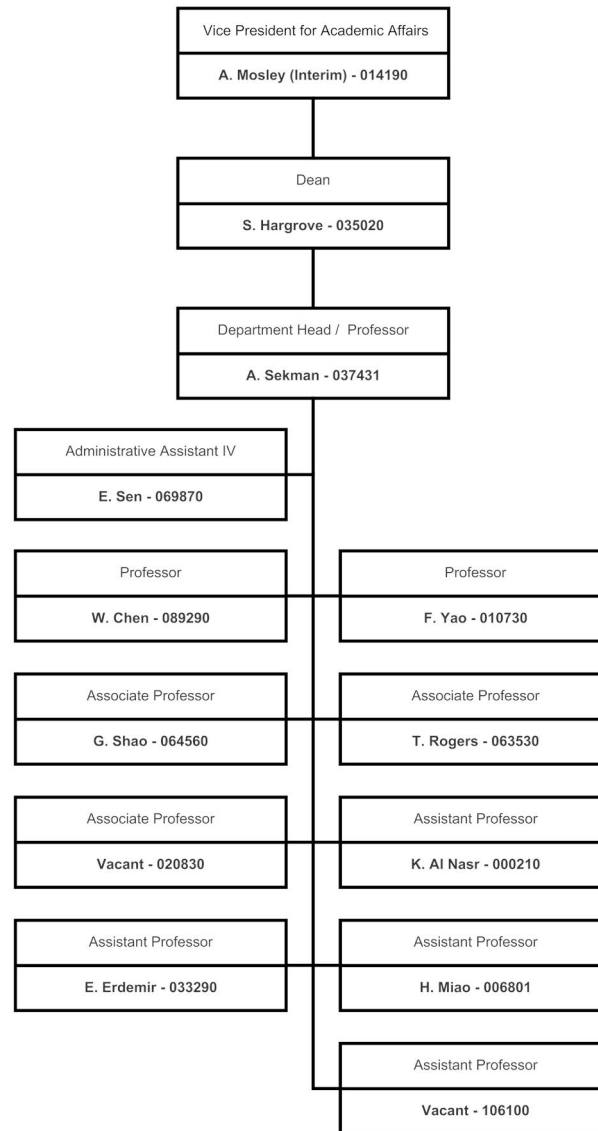
* D. Chimba - 004710 permanent position number

Tennessee State University
Organizational Chart
COLLEGE OF ENGINEERING
Mechanical Engineering
2017-2018
ORG: 13414

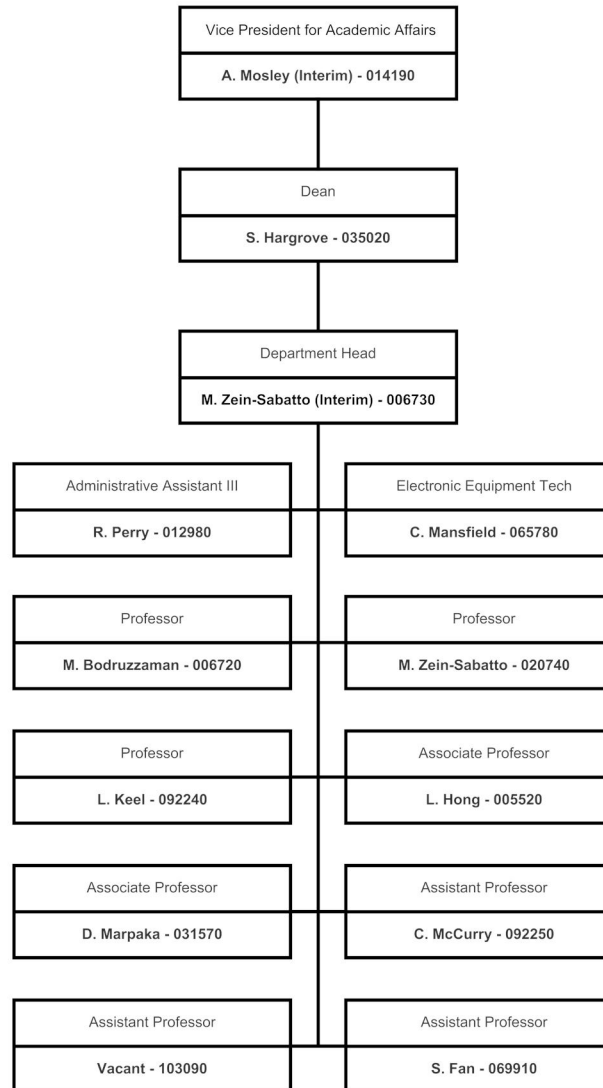


* L. Onyebueke - 006570 permanent position number

Tennessee State University
Organizational Chart
COLLEGE OF ENGINEERING
Computer Science
2017-2018
ORG: 13422

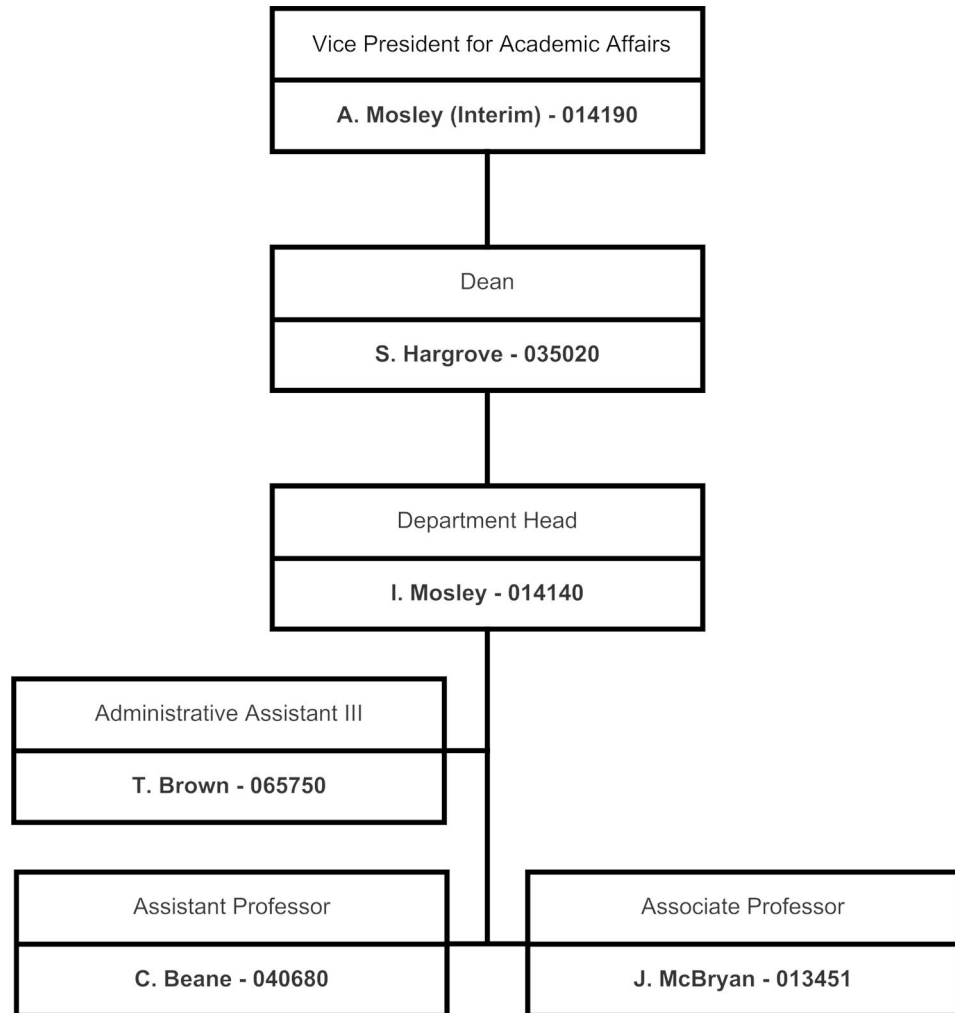


Tennessee State University
 Organizational Chart
 COLLEGE OF ENGINEERING
 Electrical and Computer Engineering
 2017-2018
 ORG: 13410, 13420

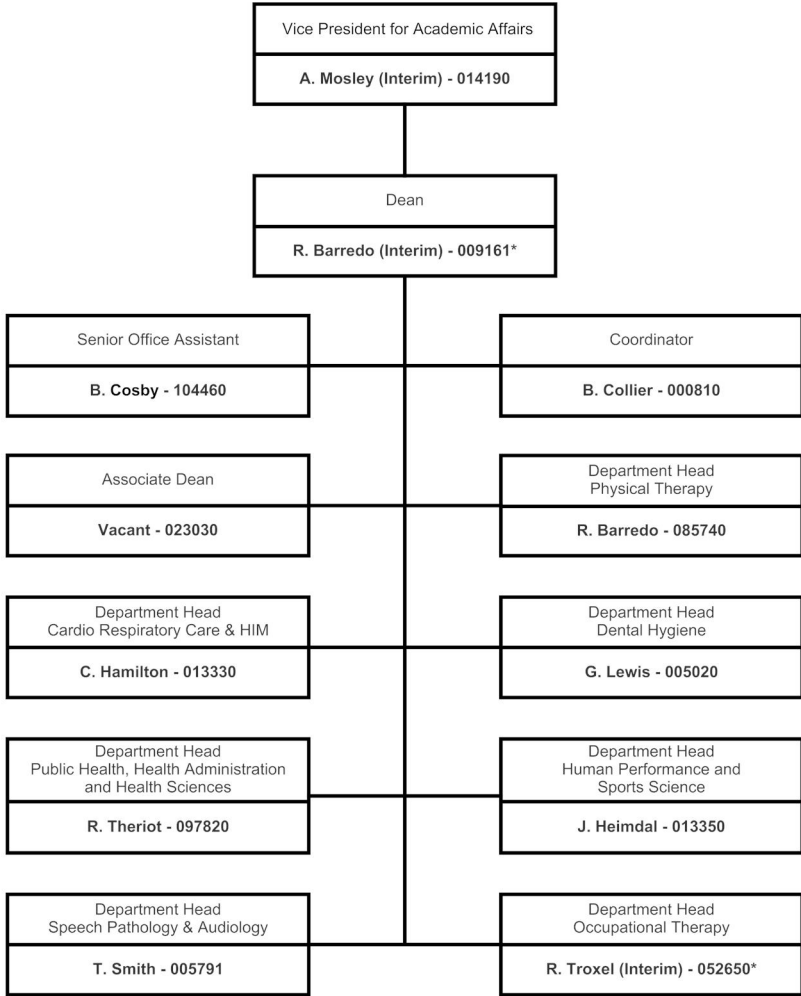


*M. Zein-Sabatto - 020740 permanent position number

Tennessee State University
Organizational Chart
COLLEGE OF ENGINEERING
Aeronautical and Industrial Technology
2017-2018
ORG: 13412

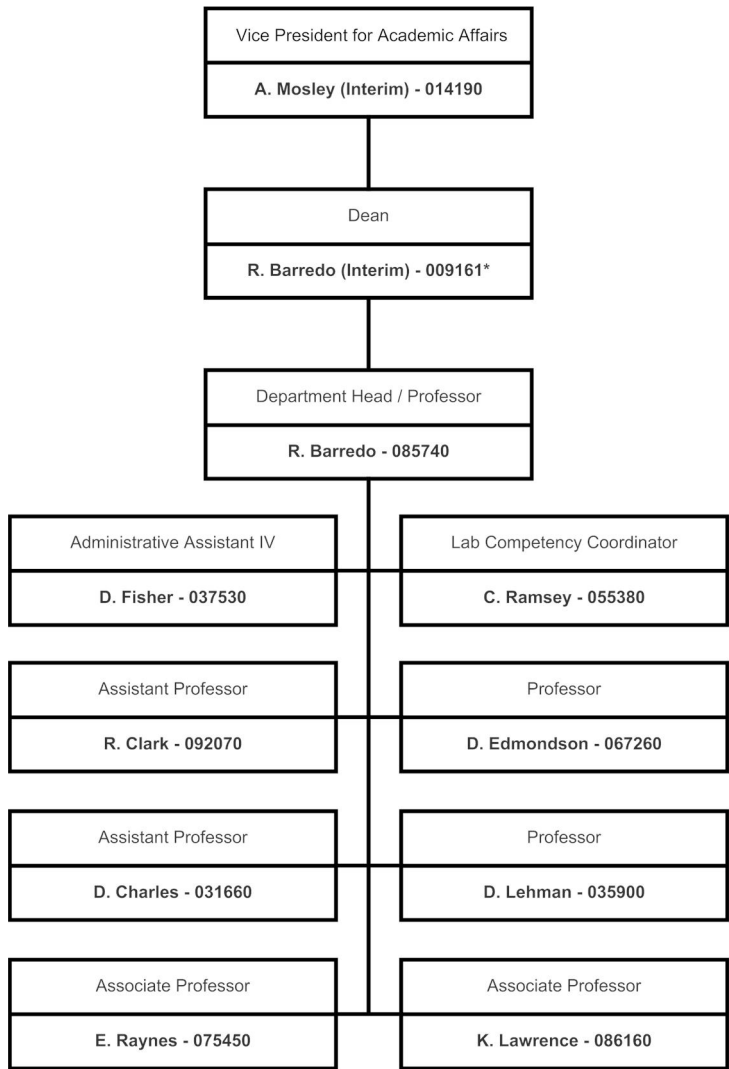


Tennessee State University
Organizational Chart
COLLEGE OF HEALTH SCIENCES
2017-2018
ORG: 13600



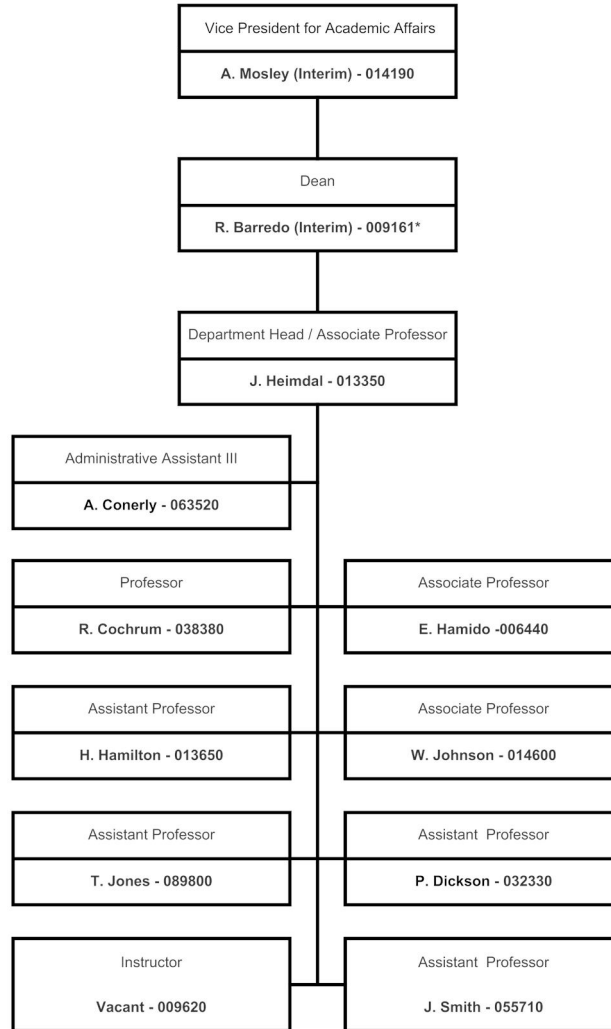
* R. Barredo - 085740 permanent position number
 R. Troxel - 083190 permanent position number

Tennessee State University
Organizational Chart
COLLEGE OF HEALTH SCIENCES
Physical Therapy
2017-2018
ORG: 13670



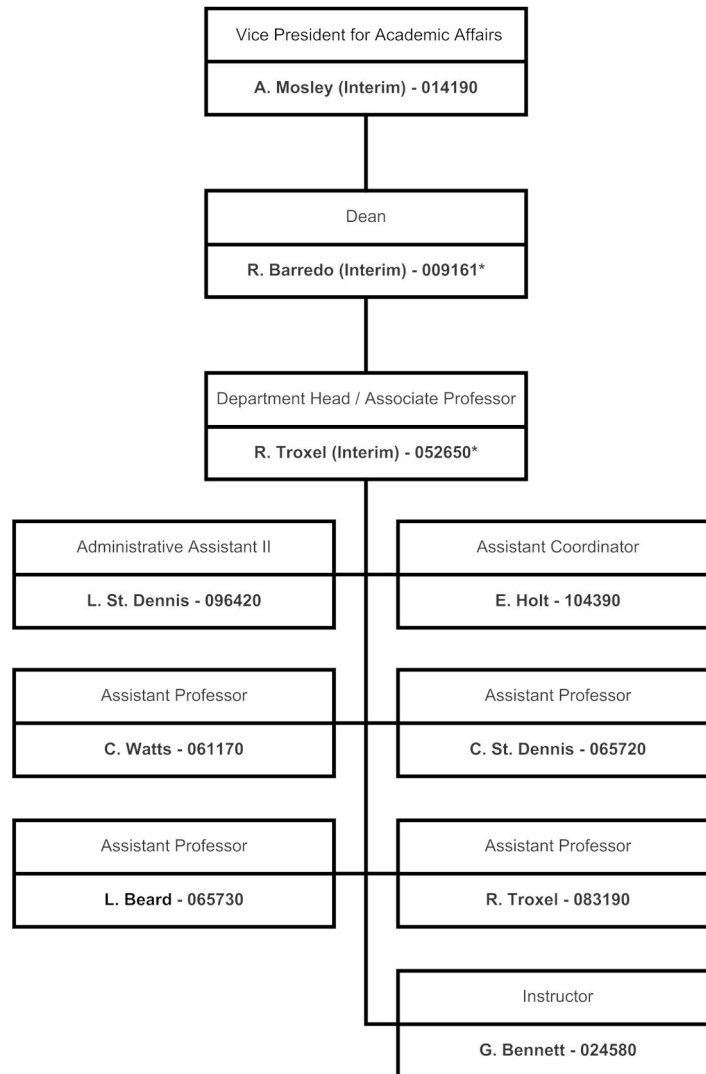
* R. Barredo - 085740 permanent position number

Tennessee State University
Organizational Chart
COLLEGE OF HEALTH SCIENCES
Human Performance and Sports Science
2017-2018
ORG: 13308



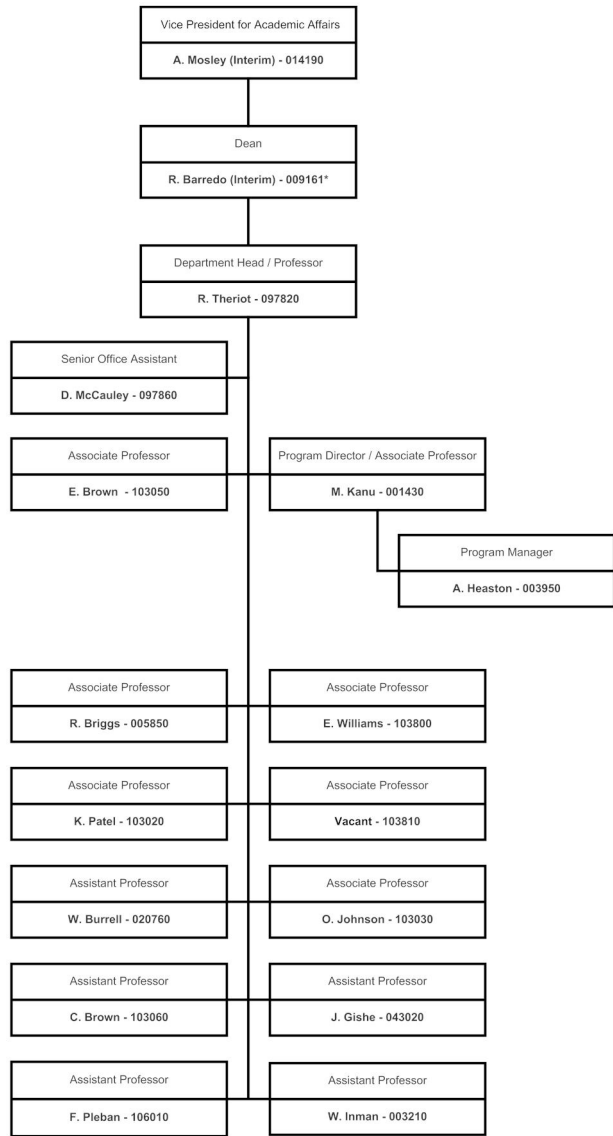
* R. Barredo - 085740 permanent position number

Tennessee State University
Organizational Chart
COLLEGE OF HEALTH SCIENCES
Occupational Therapy
2017-2018
ORG: 13680



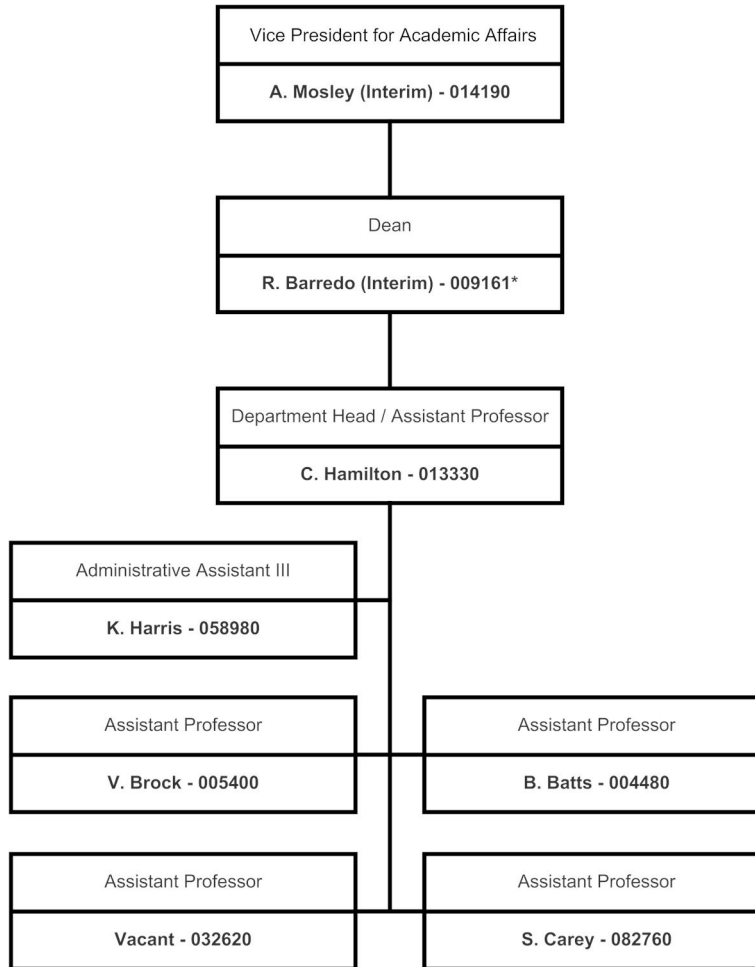
* R. Barredo - 085740 permanent position number
R. Troxel - 083190 permanent position number

Tennessee State University
 Organizational Chart
 COLLEGE OF HEALTH SCIENCES
 Public Health, Health Administration and Health Sciences
 2017-2018
 ORG: 13630, 13633



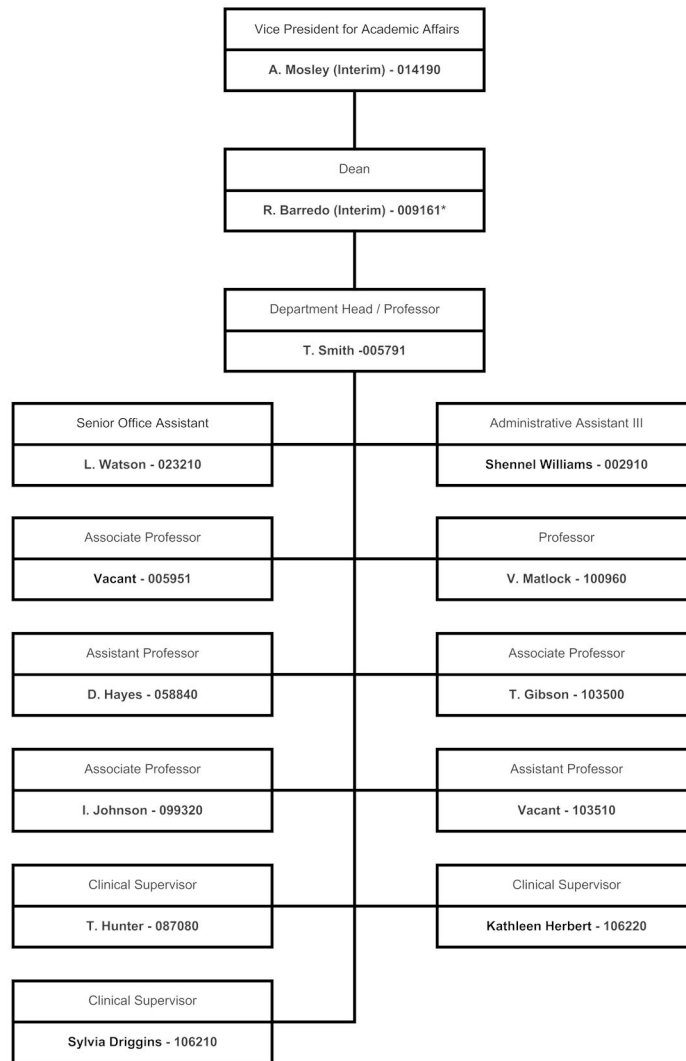
* R. Barredo - 085740 permanent position number

Tennessee State University
Organizational Chart
COLLEGE OF HEALTH SCIENCES
Respiratory Care and Health Information Management
2017-2018
ORG: 13640, 13660



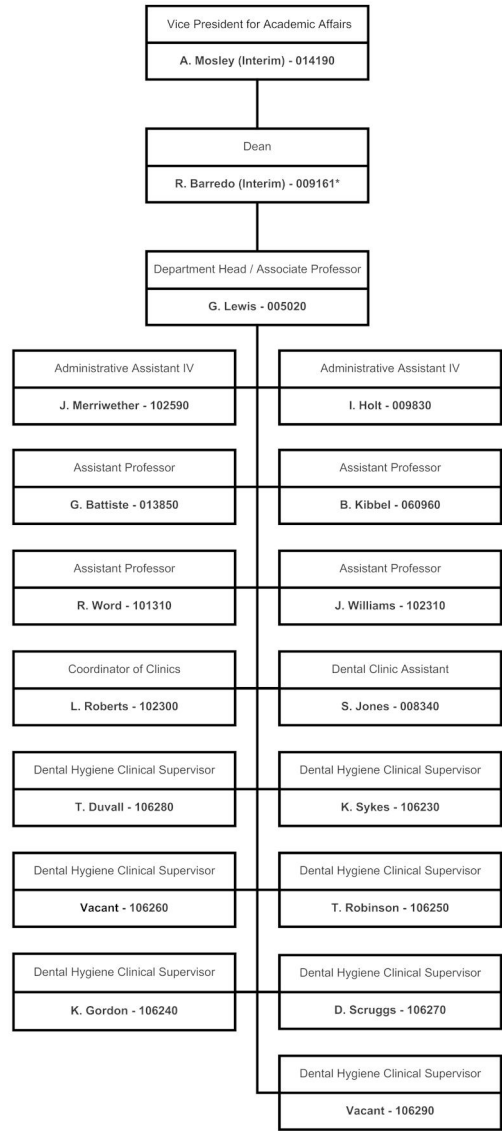
* R. Barredo - 085740 permanent position number

Tennessee State University
 Organizational Chart
 COLLEGE OF HEALTH SCIENCES
 Speech Pathology
 2017-2018
 ORG. 13650



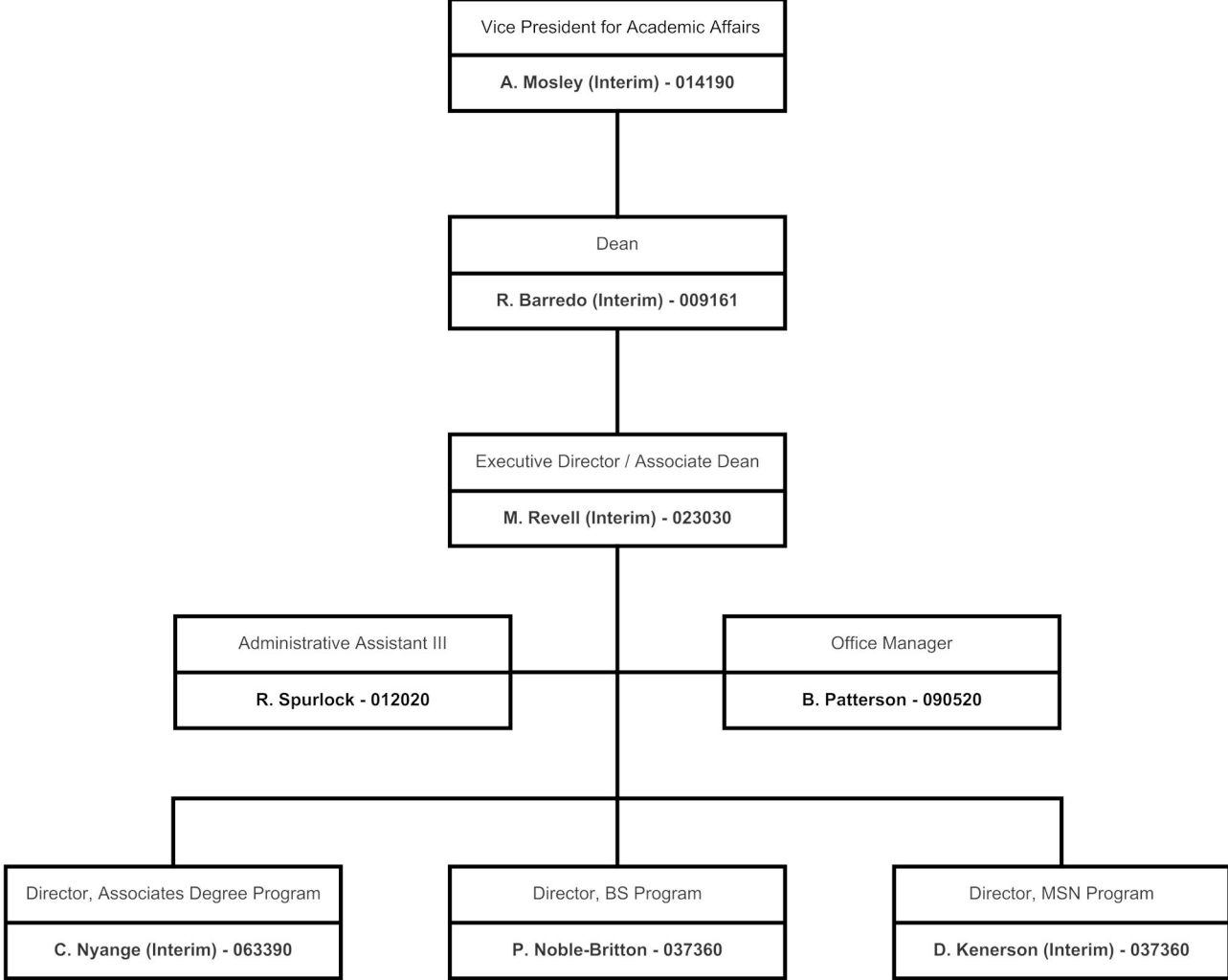
* R. Barredo - 085740 permanent position number

Tennessee State University
Organizational Chart
COLLEGE OF HEALTH SCIENCES
Dental Hygiene
2017-2018
ORG: 13620

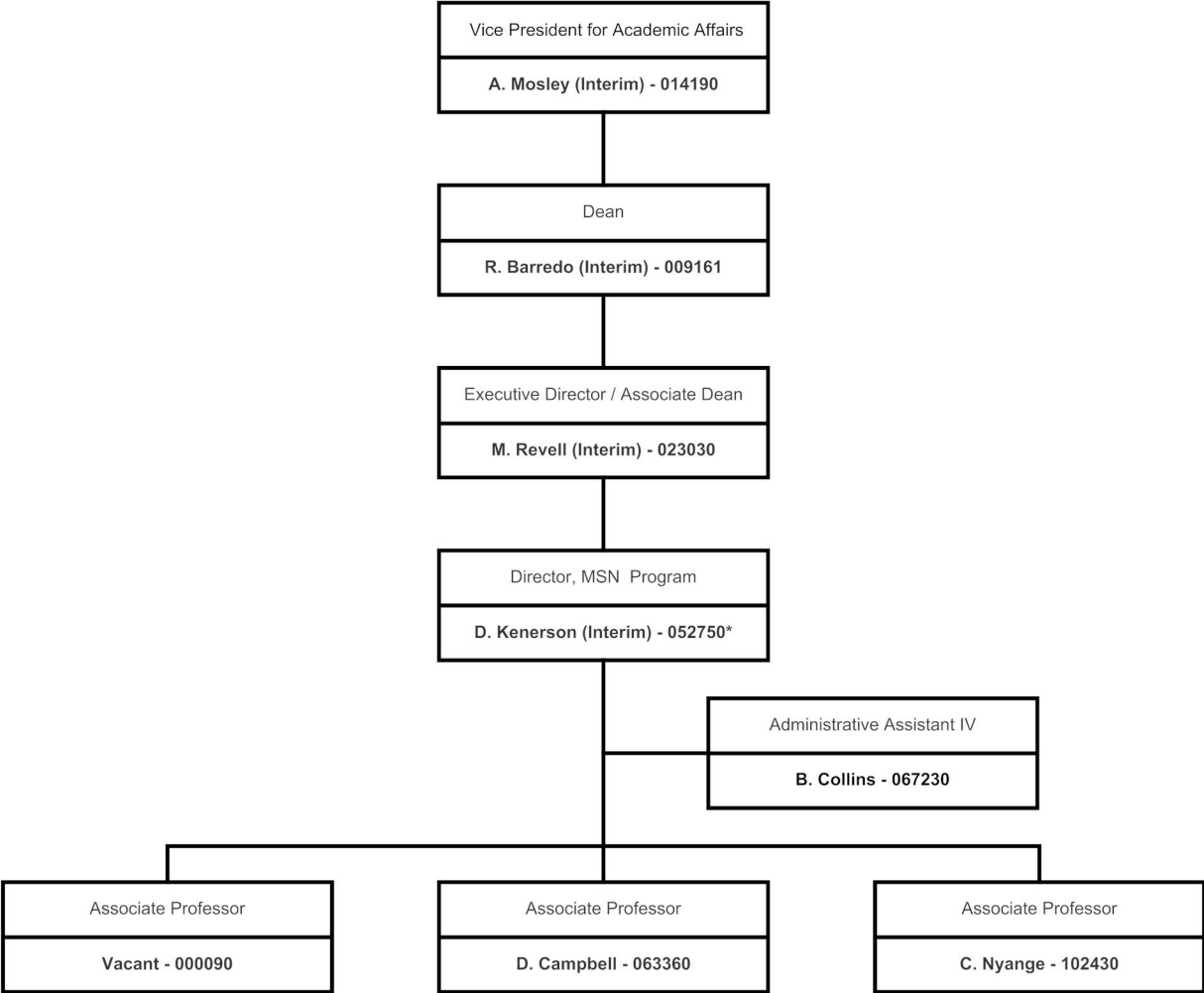


* R. Barredo - 085740 permanent position number

Tennessee State University
Organizational Chart
COLLEGE OF HEALTH SCIENCES
School of Nursing
2017-2018
ORG: 13800

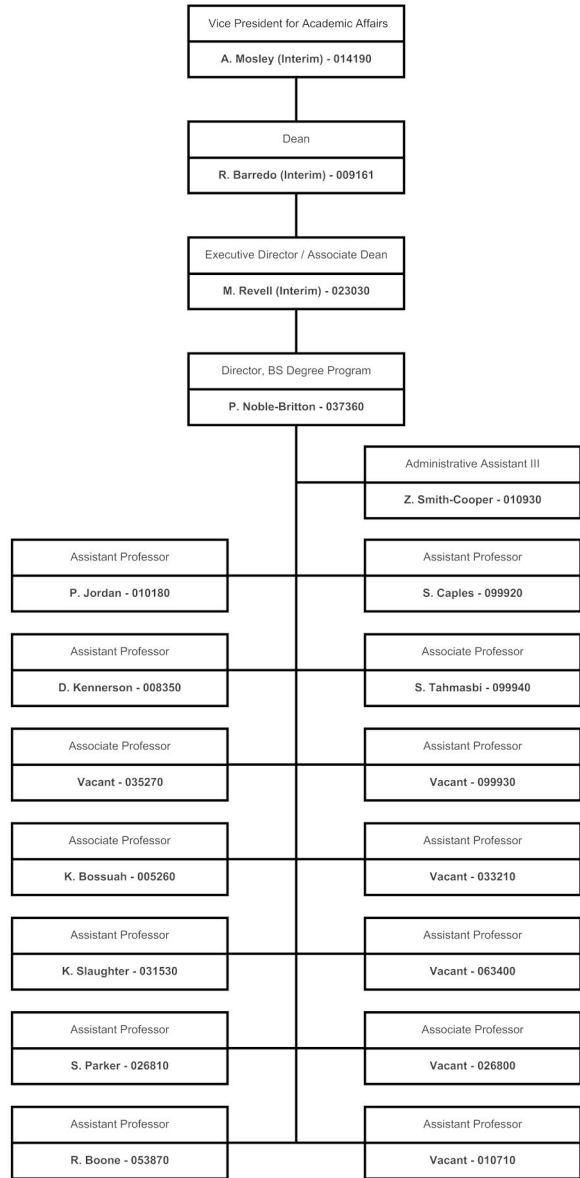


Tennessee State University
Organizational Chart
SCHOOL OF NURSING
Masters of Science Degree Program
2017-2018
ORG: 13830

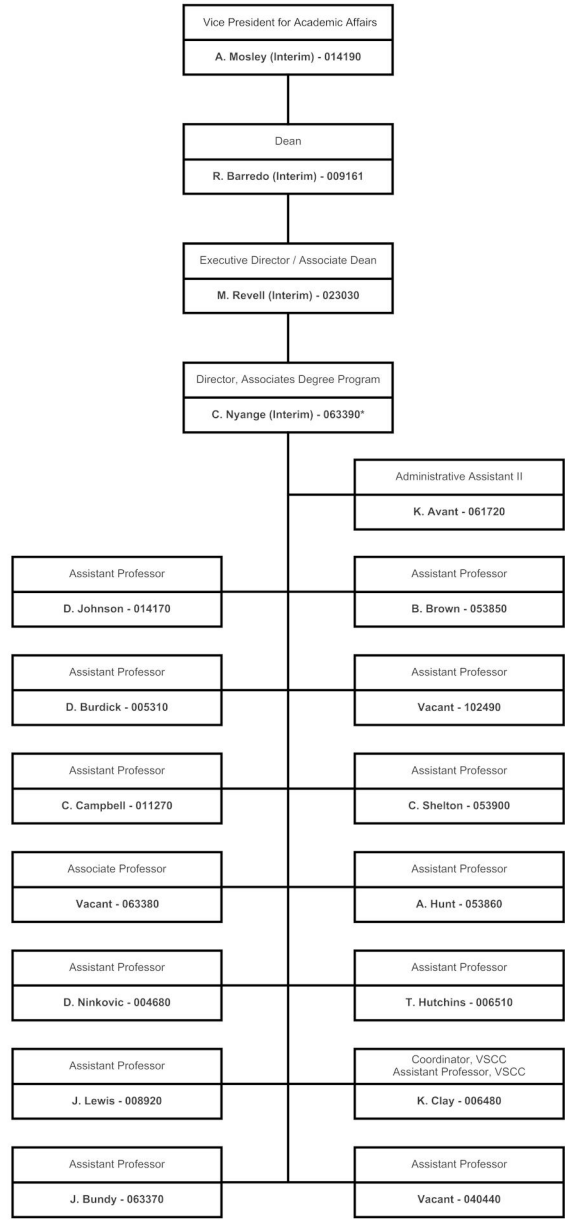


* D. Kennerson - 008350 permanent position number

Tennessee State University
 Organizational Chart
 SCHOOL OF NURSING
 Baccalaureate Program
 2017-2018
 ORG: 13820

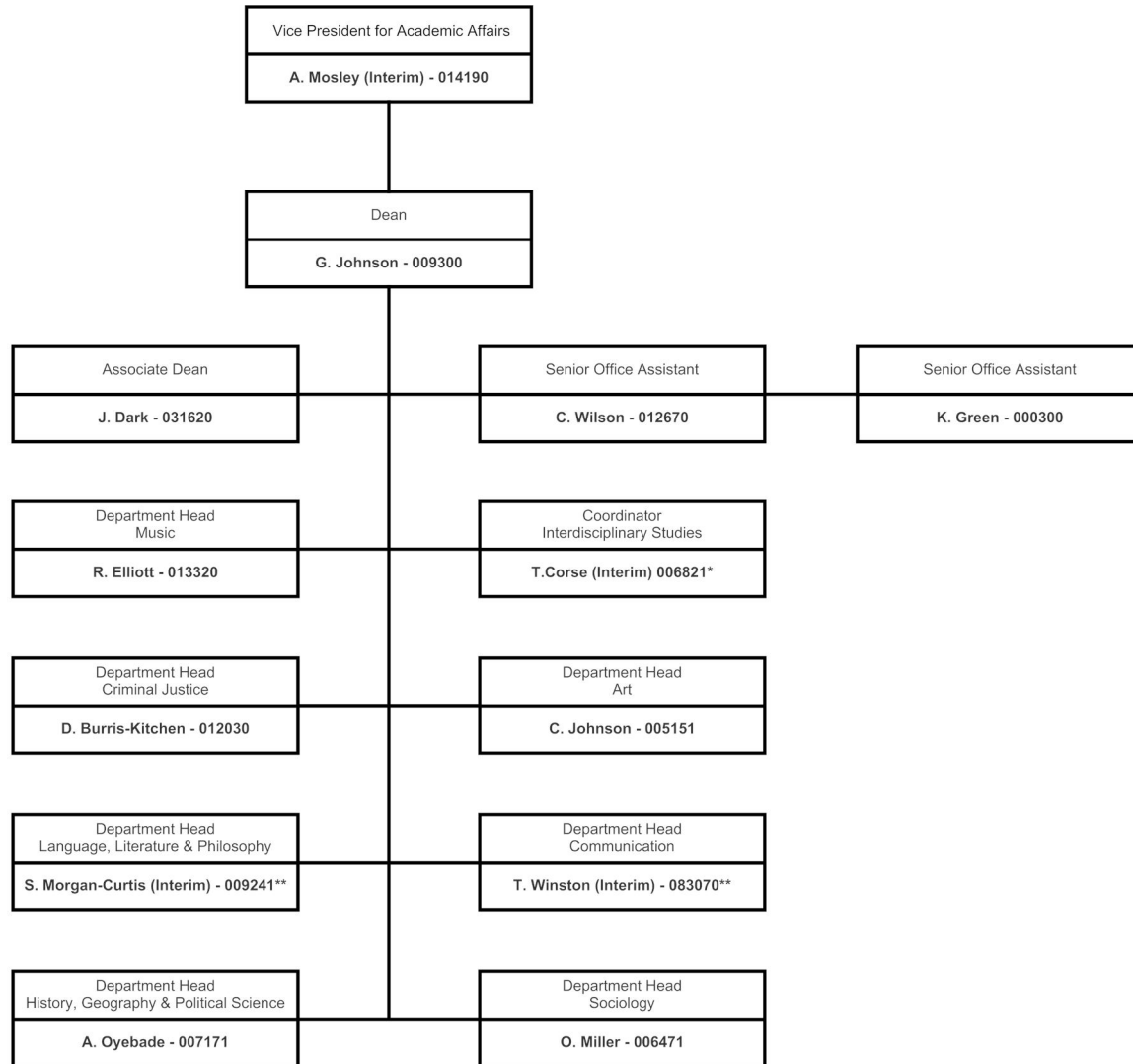


Tennessee State University
 Organizational Chart
 SCHOOL OF NURSING
 Associate Degree Program
 2017-2018
 ORG- 13810



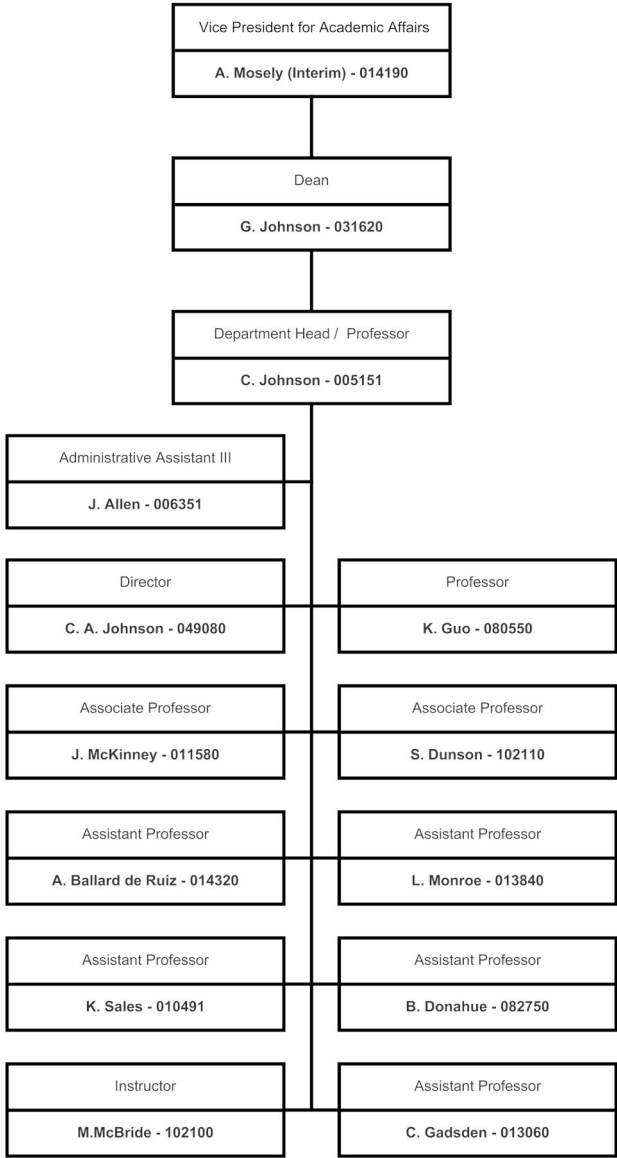
* C. Nyange - 102430 permanent position number

Tennessee State University
 Organizational Chart
 COLLEGE OF LIBERAL ARTS
 2017-2018
 ORG: 13100

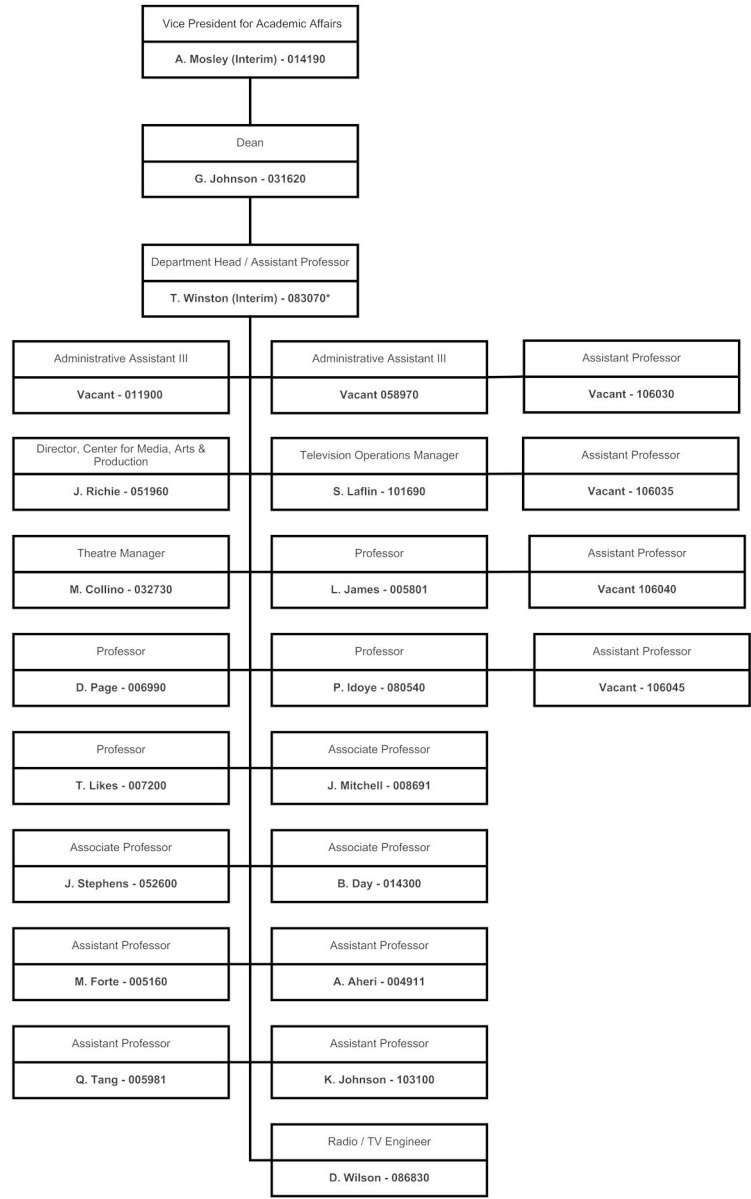


* T. Corse - permanent position assigned to History, Geography & Political Science department
 **S. Morgan-Curtis - 012621 permanent position number
 T.Winston - 083480 permanent position number

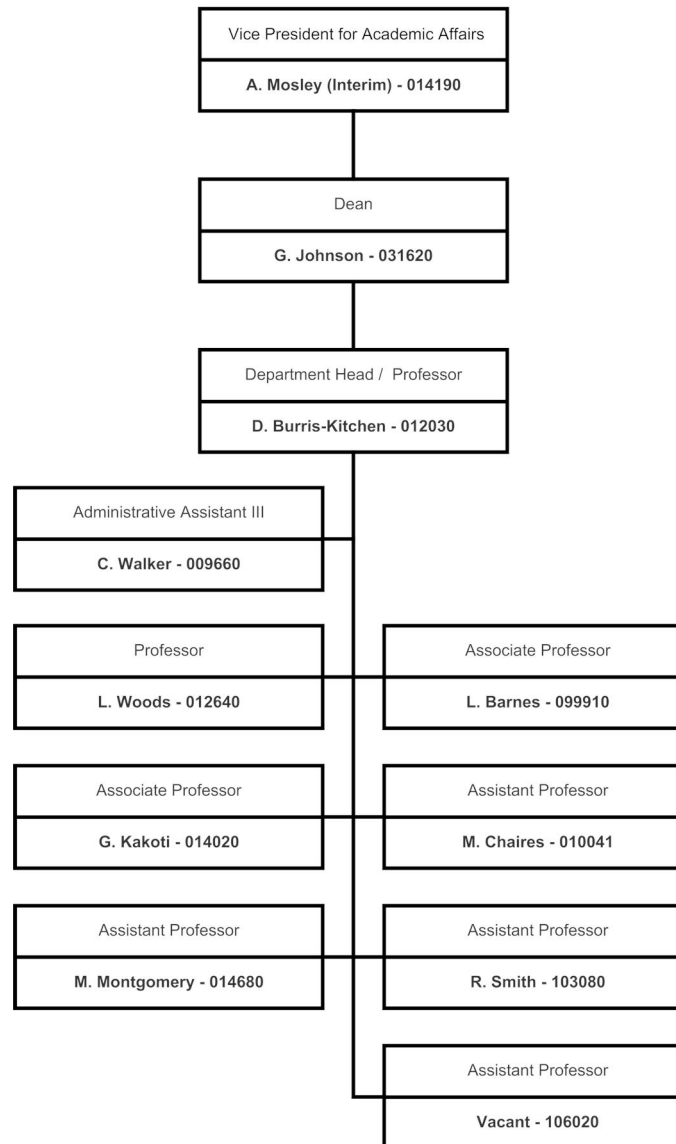
Tennessee State University
 Organizational Chart
 COLLEGE OF LIBERAL ARTS
 Art
 2017-2018
 ORG: 13144



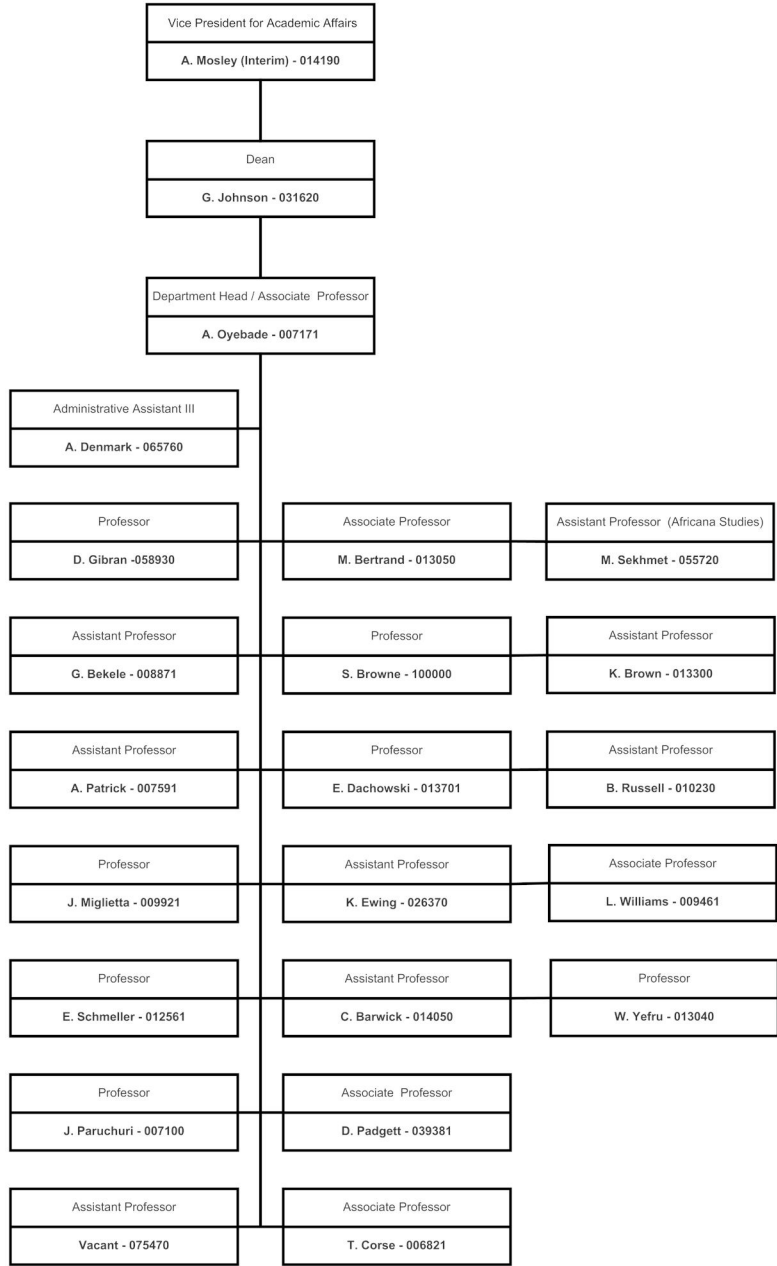
Tennessee State University
 Organizational Chart
 COLLEGE OF LIBERAL ARTS
 Communications
 2017-2018
 ORG: 13126, 19520



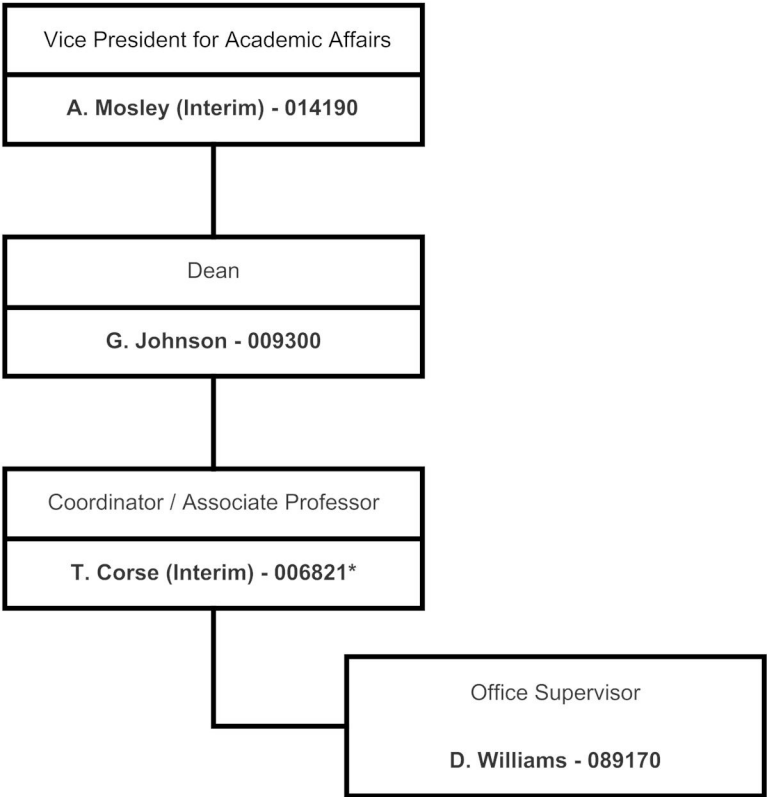
Tennessee State University
Organizational Chart
COLLEGE OF LIBERAL ARTS
Criminal Justice
2017-2018
ORG: 13112



Tennessee State University
 Organizational Chart
 COLLEGE OF LIBERAL ARTS
 History, Geography, and Political Science
 2017-2018
 ORG: 13116, 13146

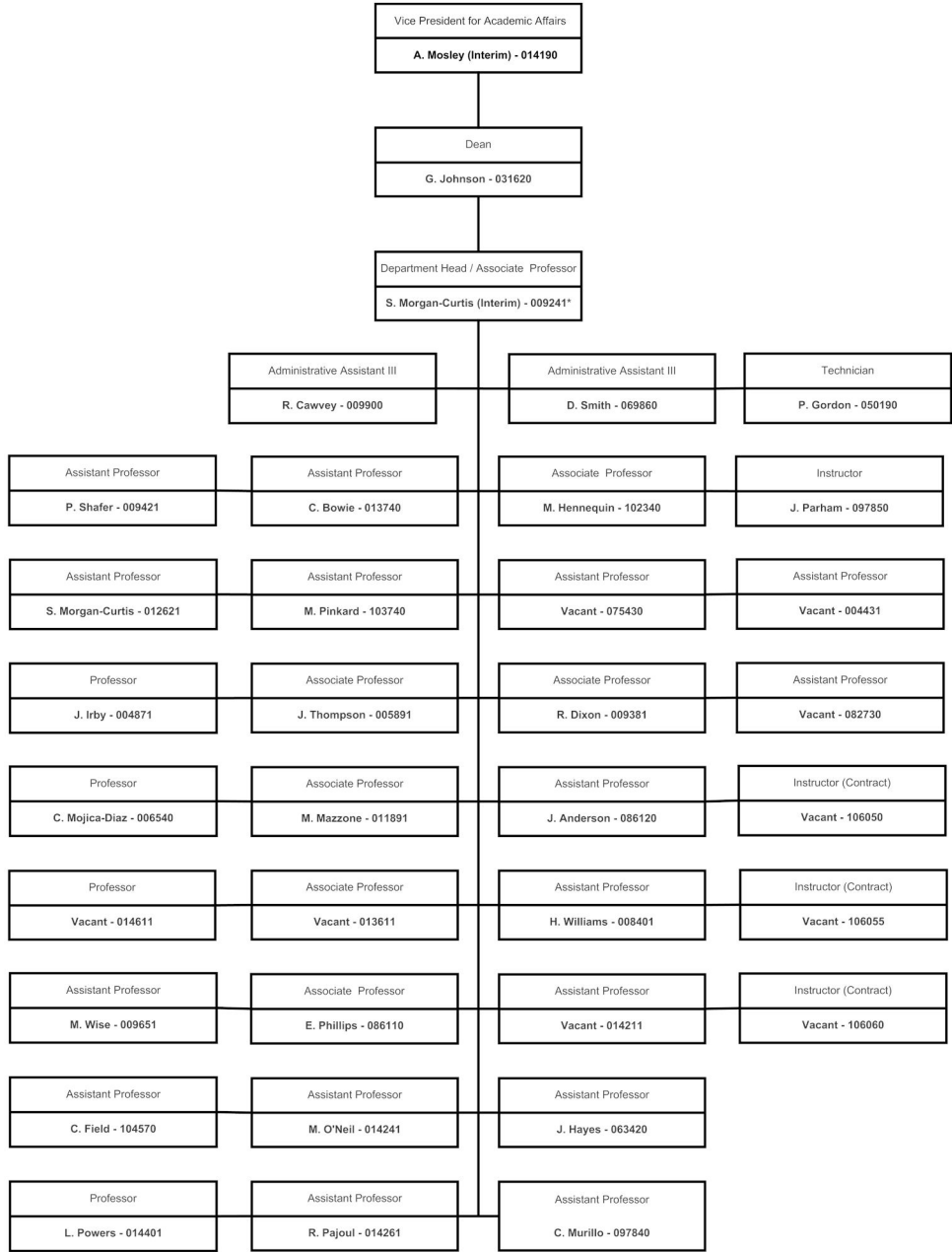


Tennessee State University
Organizational Chart
COLLEGE OF LIBERAL ARTS
Interdisciplinary Studies
2017-2018
ORG: 13116, 13124



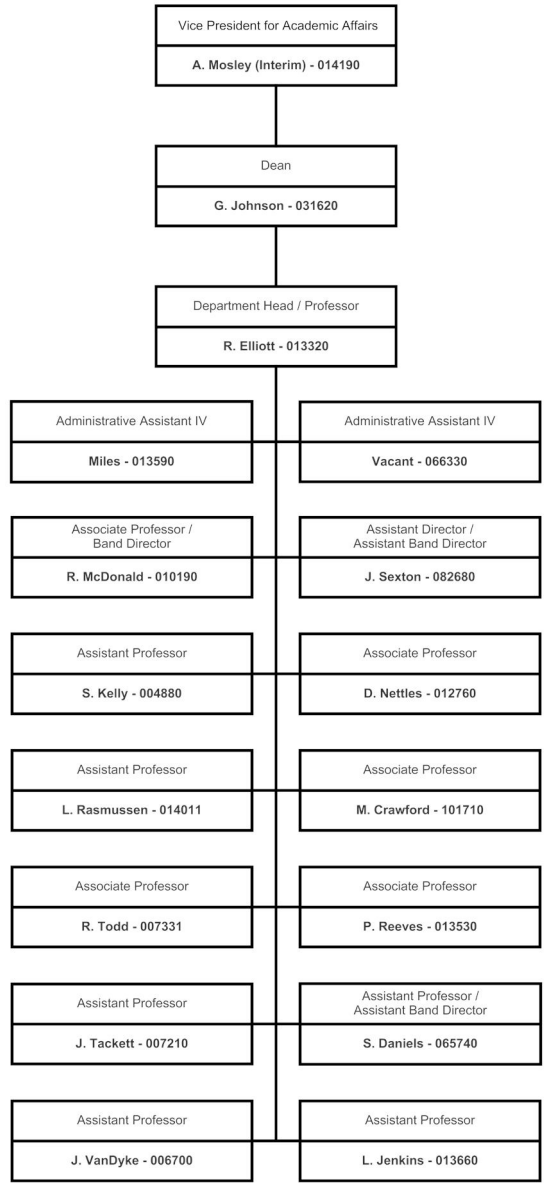
* T. Corse - permanent position assigned to History, Geography & Political Science department

Tennessee State University
Organizational Chart
COLLEGE OF LIBERAL ARTS
Languages, Literature, and Philosophy
 2017-2018
 ORG-13108

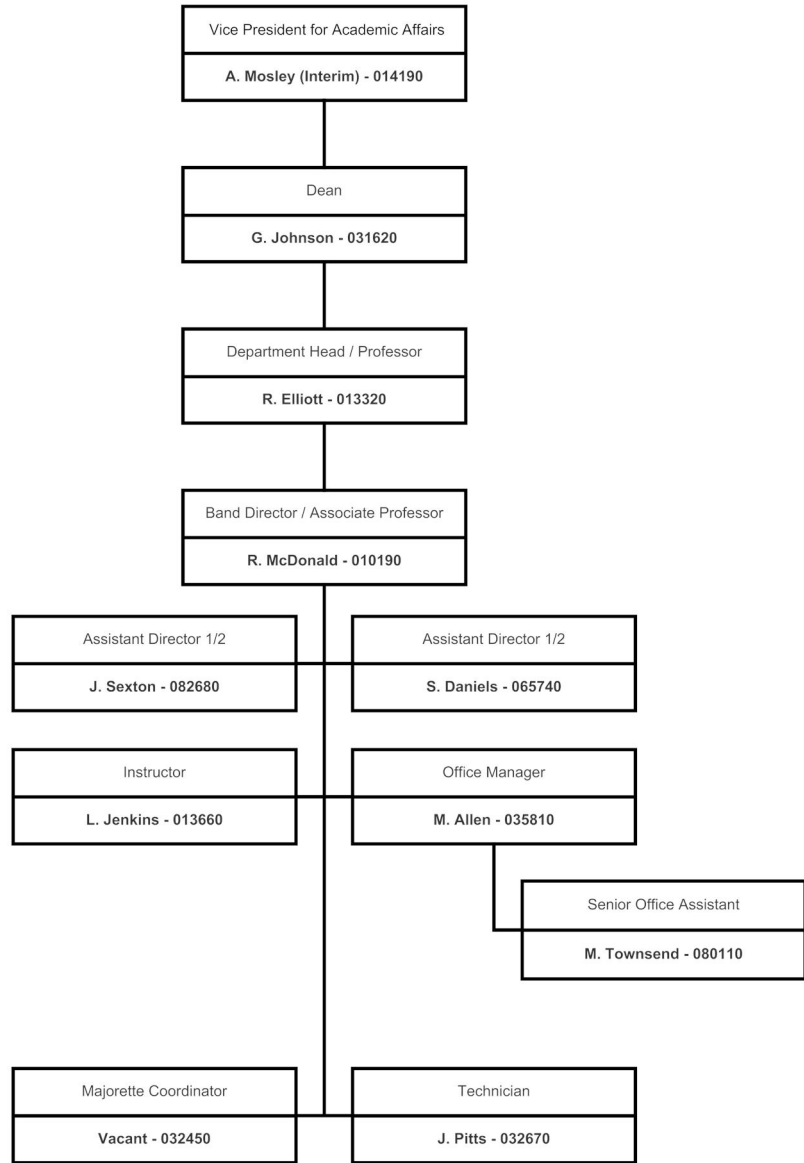


* S. Morgan-Curtis - 012621 permanent position number

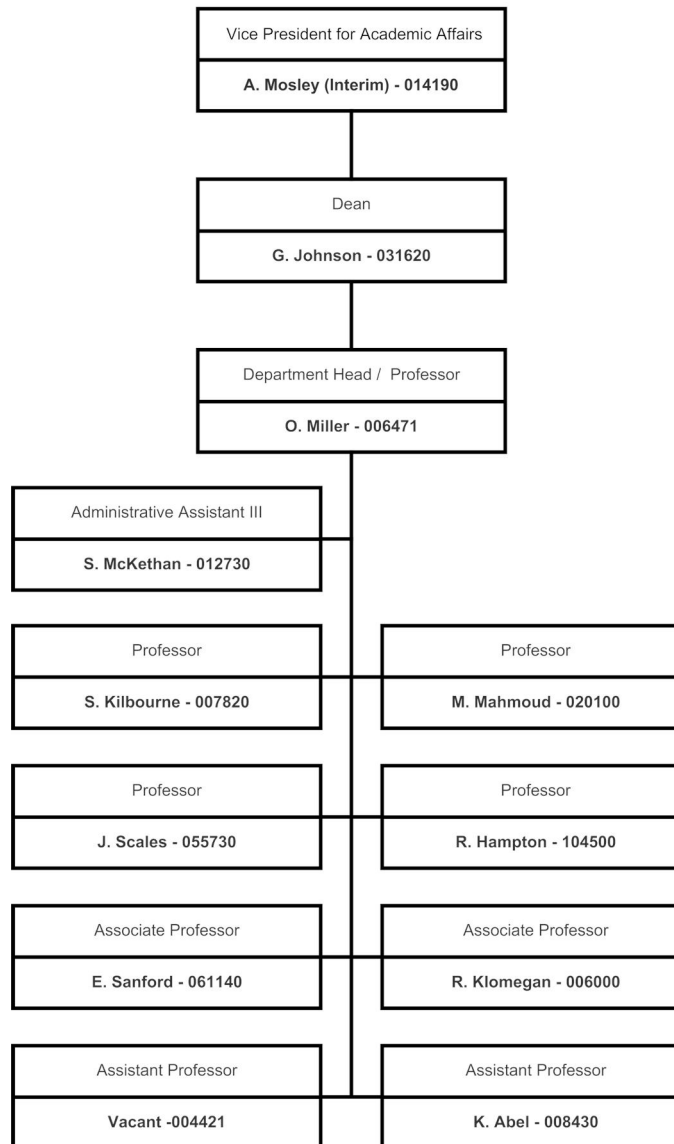
Tennessee State University
 Organizational Chart
 COLLEGE OF LIBERAL ARTS
 Music
 2017-2018
 ORG: 13134, 13142, 13140



Tennessee State University
Organizational Chart
COLLEGE OF LIBERAL ARTS
Music: Band
2017-2018
ORG: 13134, 13142



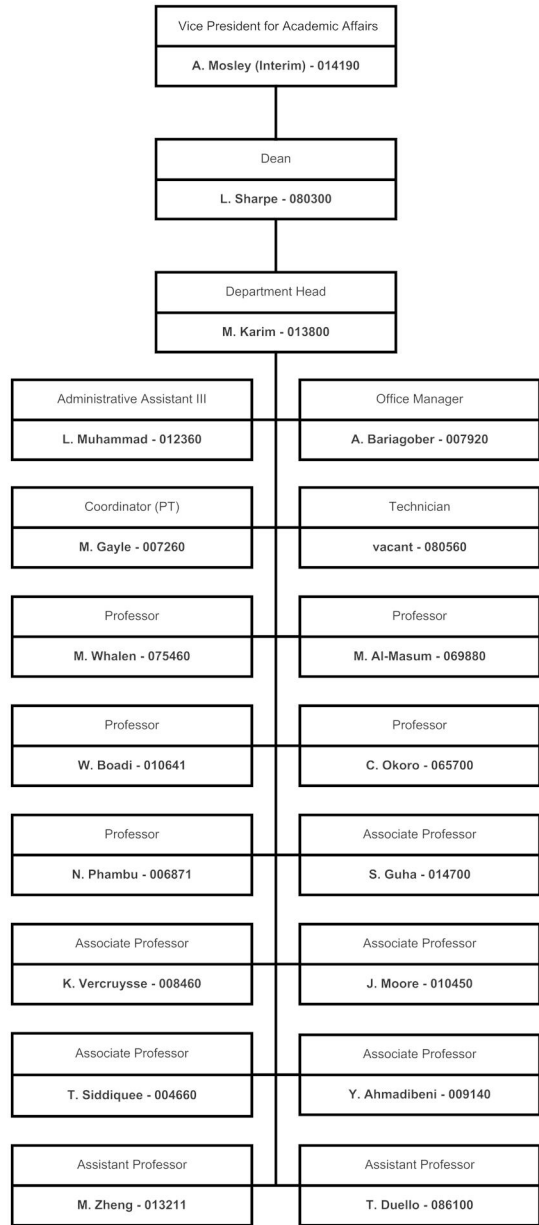
Tennessee State University
Organizational Chart
COLLEGE OF LIBERAL ARTS
Sociology
2017-2018
ORG: 13110



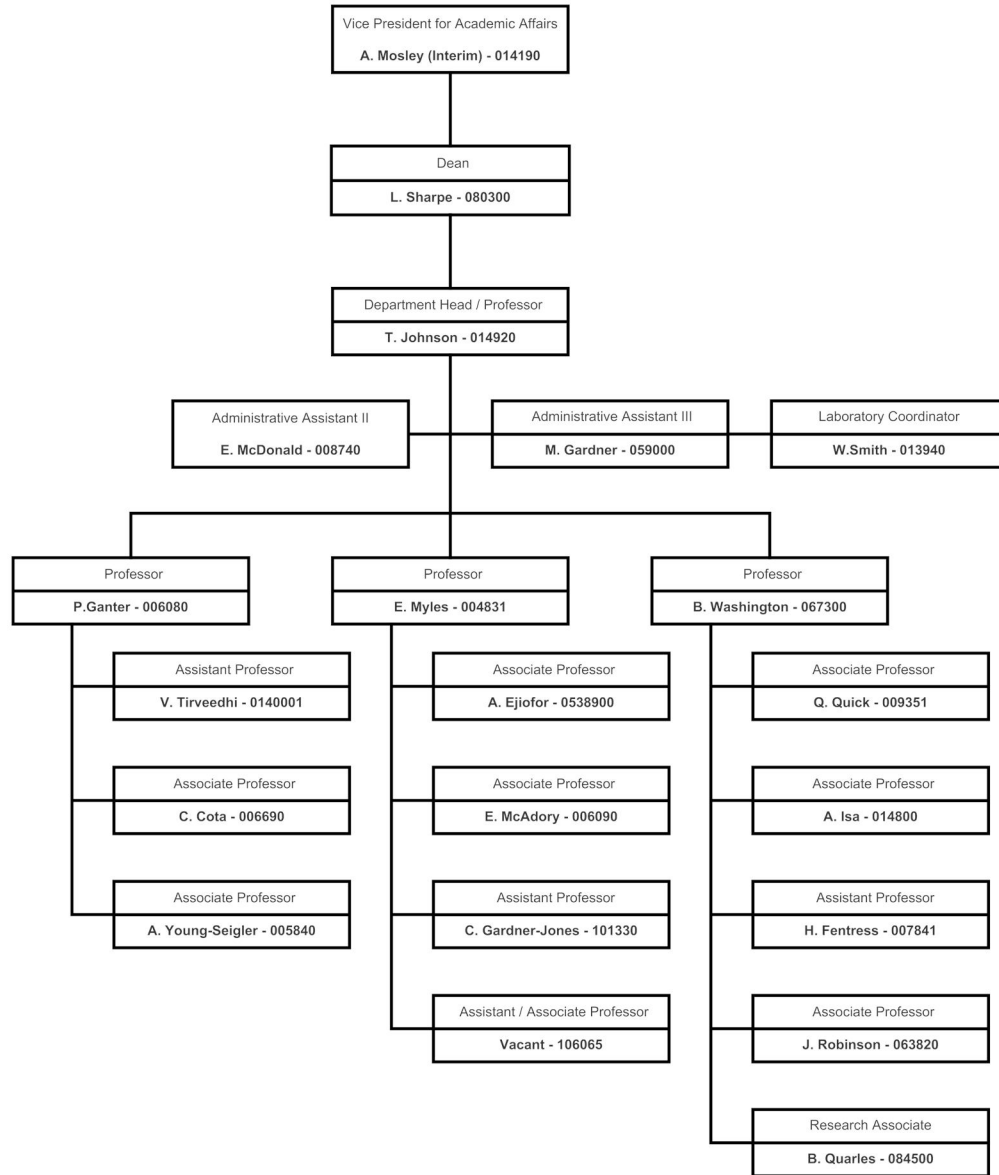
Tennessee State University
Organizational Chart
COLLEGE OF LIFE AND PHYSICAL SCIENCES
2017-2018



Tennessee State University
Organizational Chart
COLLEGE OF LIFE AND PHYSICAL SCIENCES
Chemistry
2017-2018
ORG: 13104



Tennessee State University
 Organizational Chart
 COLLEGE OF LIFE AND PHYSICAL SCIENCES
 Biological Sciences
 2017-2018
 ORG: 13102

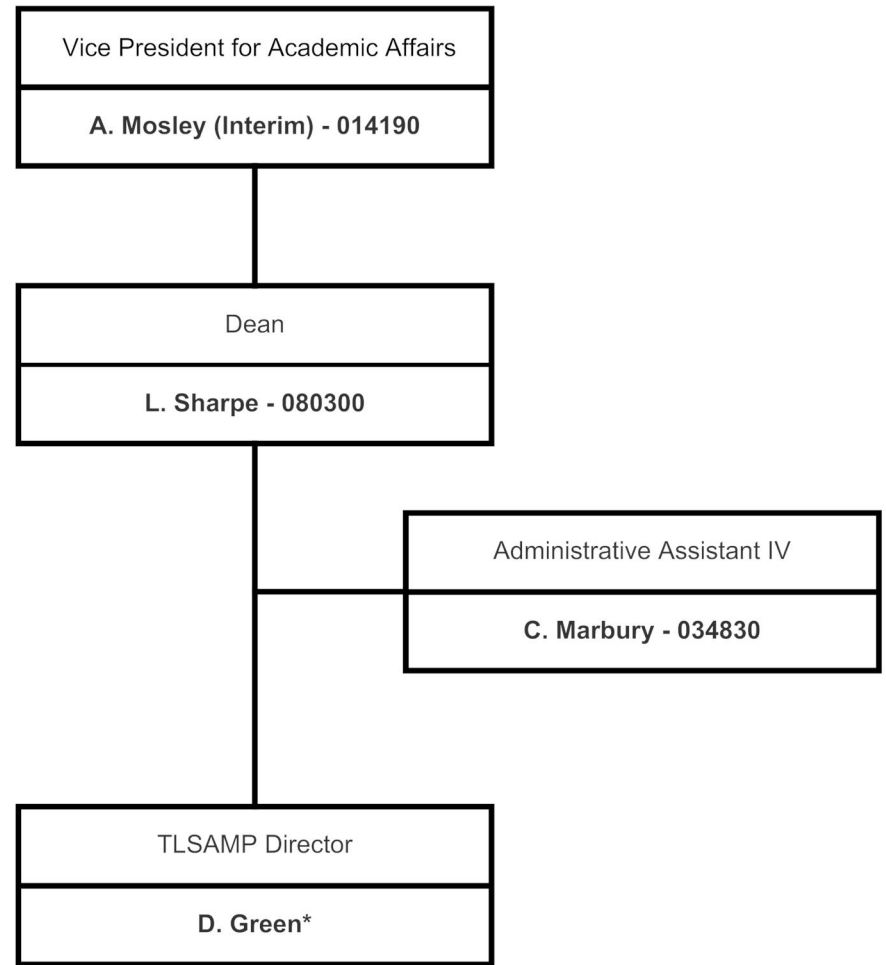


MAIN MENU

Tennessee State University
Organizational Chart
COLLEGE OF LIFE AND PHYSICAL SCIENCES
Mathematical Sciences
2017-2018
ORG: 13108

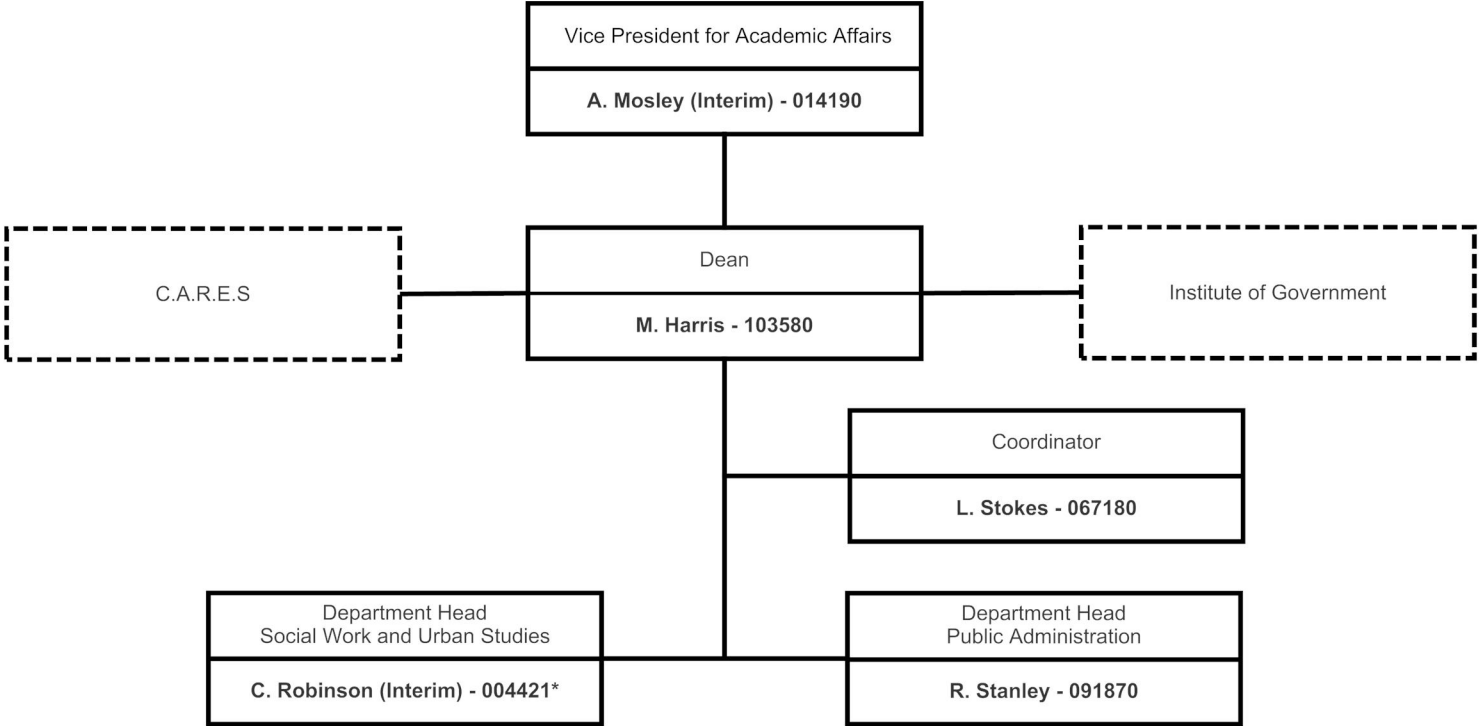


Tennessee State University
Organizational Chart
COLLEGE OF LIFE AND PHYSICAL SCIENCES
Massie Chair of Excellence / TLSAMP
2017-2018
ORG: 13408, 02010



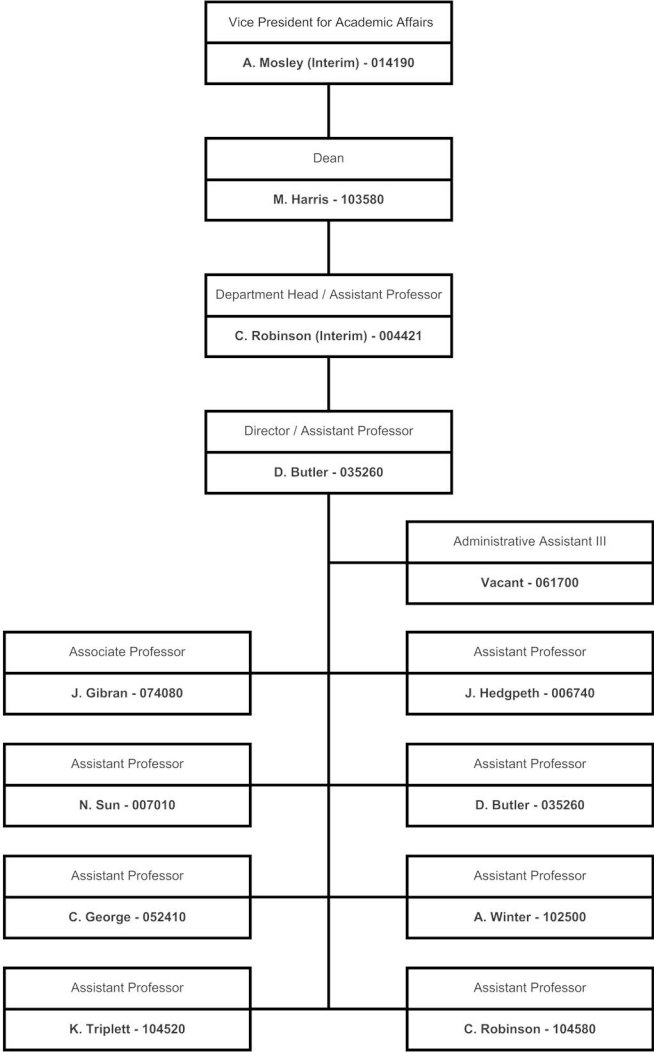
* Externally Funded

Tennessee State University
Organizational Chart
COLLEGE OF PUBLIC SERVICE
2017-2018
ORG: 13010



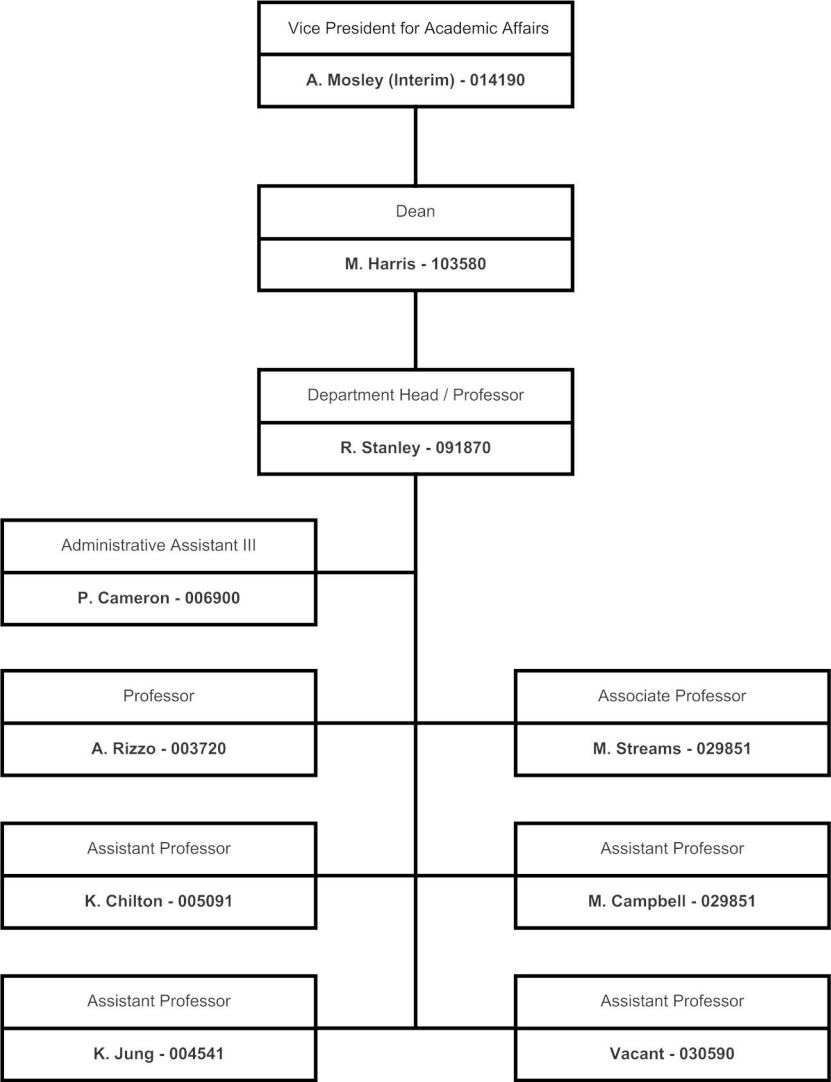
* C. Robinson - 104580 permanent position number

Tennessee State University
 Organizational Chart
 COLLEGE OF PUBLIC SERVICE
 Social Work and Urban Studies
 2017-2018
 ORG: 13114, 13040



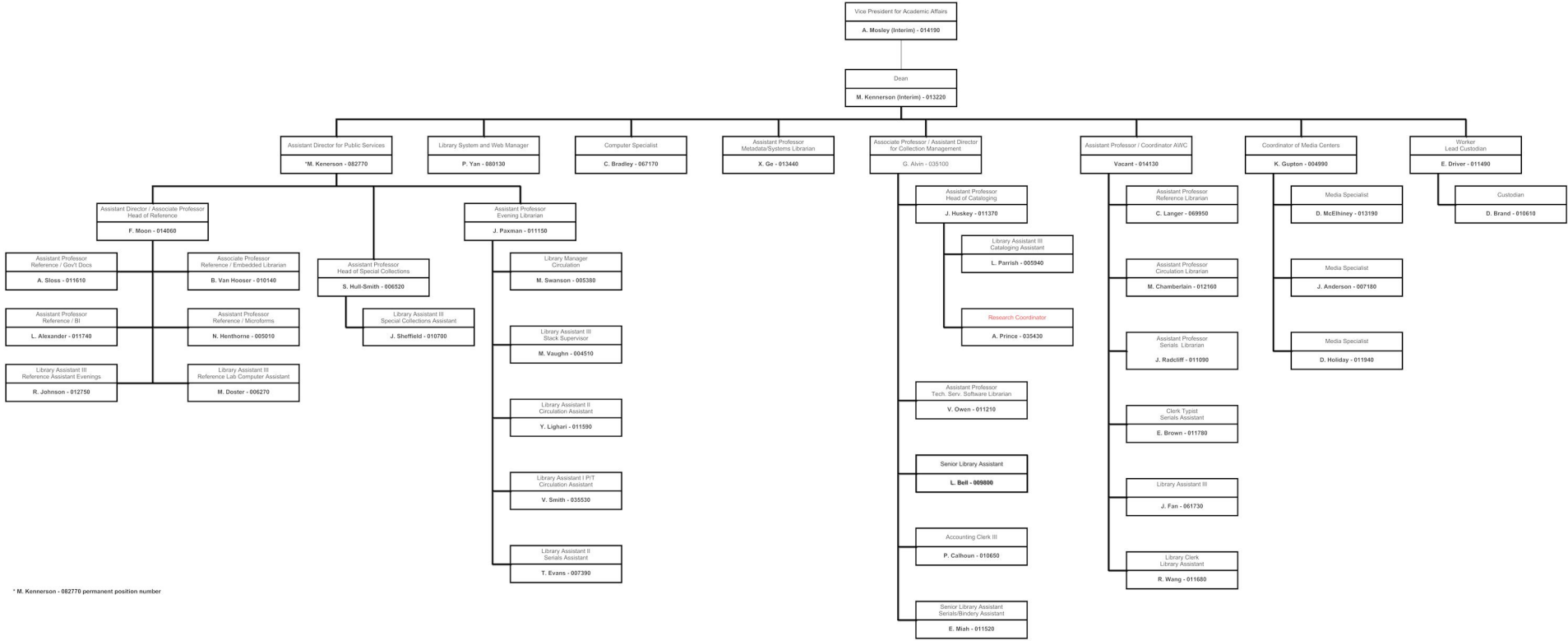
* C. Robinson - 104580 permanent position number

Tennessee State University
Organizational Chart
COLLEGE OF PUBLIC SERVICE
Public Administration
2017-2018
ORG: 13000



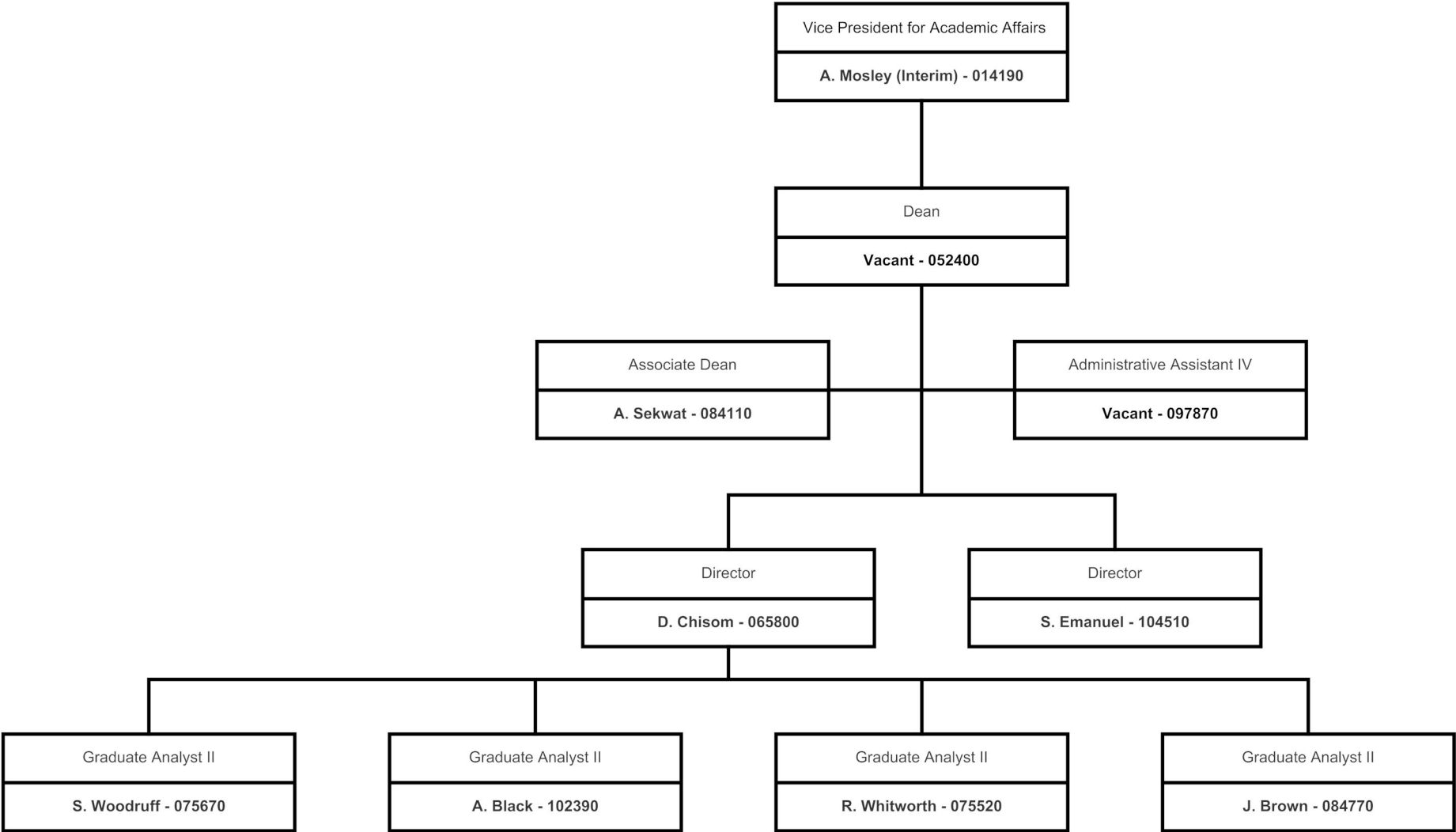
MAIN MENU

Tennessee State University
 Organizational Chart
 ACADEMIC AFFAIRS
 LIBRARIES AND MEDIA CENTERS
 2512-2016
 ORG: 1900, 19011

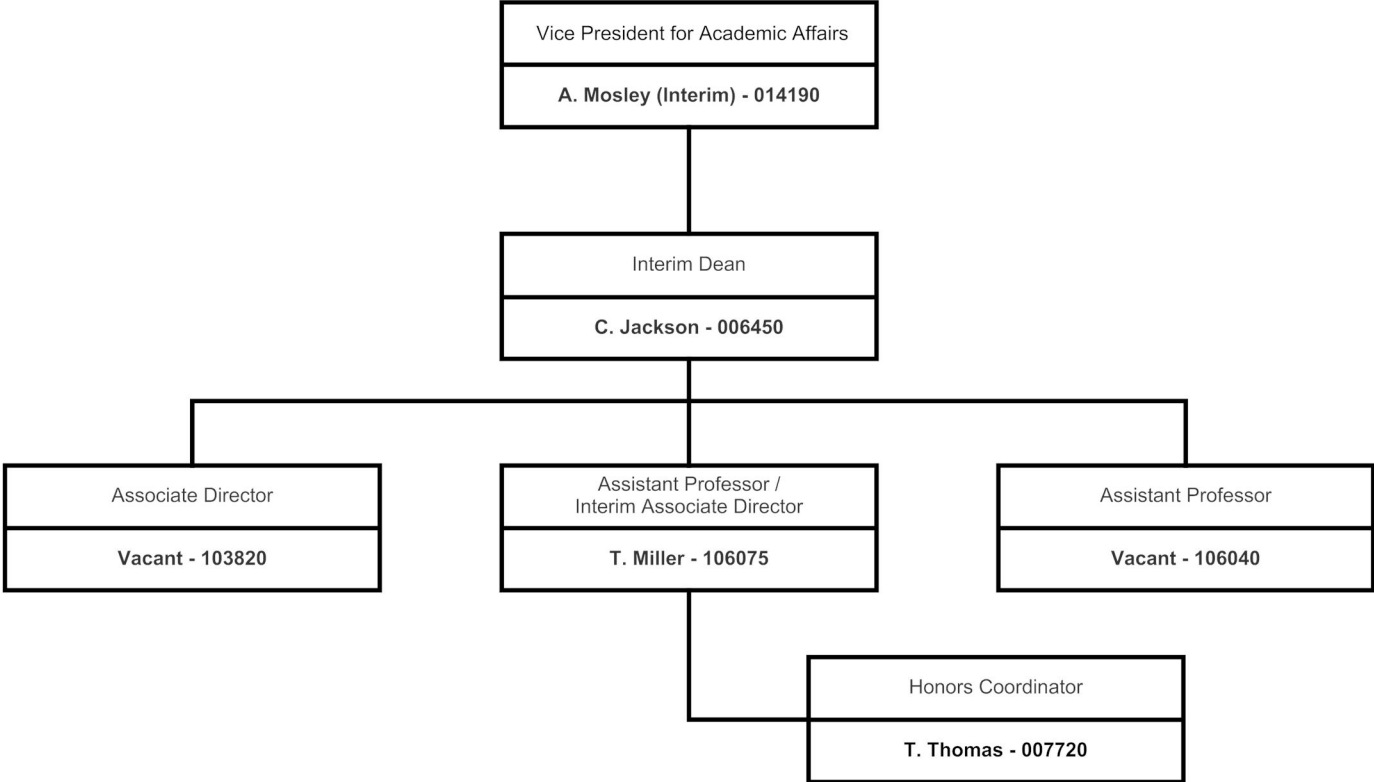


* M. Kennerson - 082770 permanent position number

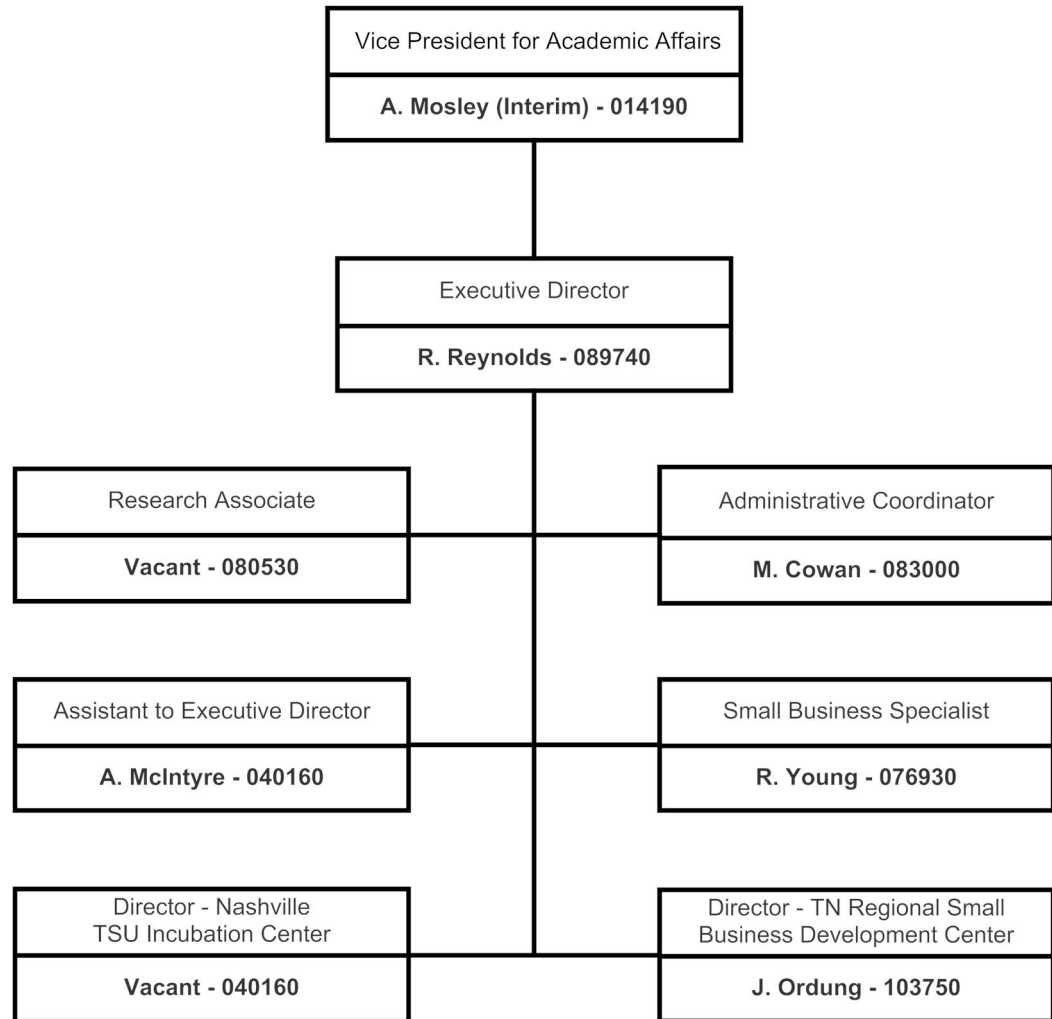
Tennessee State University
Organizational Chart
ACADEMIC AFFAIRS
SCHOOL OF GRADUATE AND PROFESSIONAL STUDIES
2017-2018
ORG: 18000



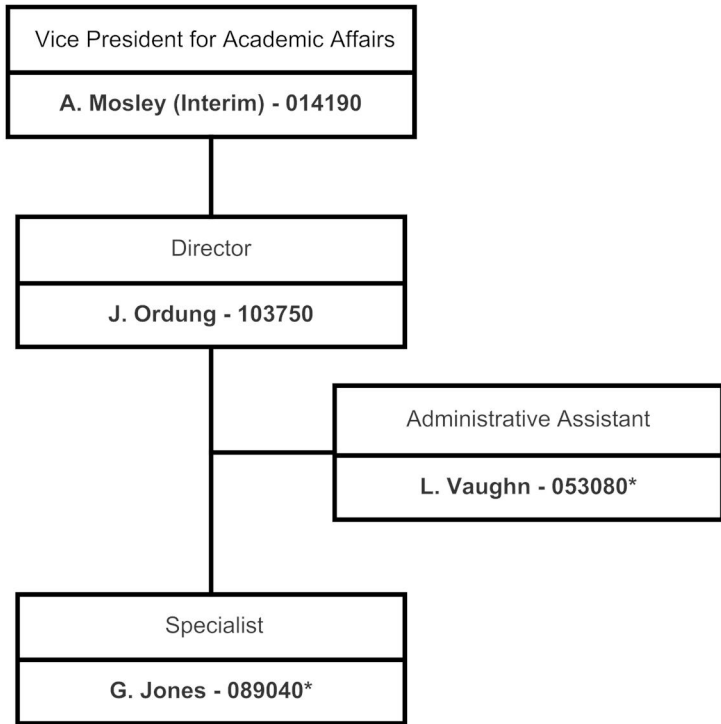
Tennessee State University
Organizational Chart
ACADEMIC AFFAIRS
HONORS COLLEGE
2017-2018
ORG:13210



Tennessee State University
Organizational Chart
ACADEMIC AFFAIRS
Center for Entrepreneurship and Economic Development
2017-2018
ORG: 61020, 12400, 13765

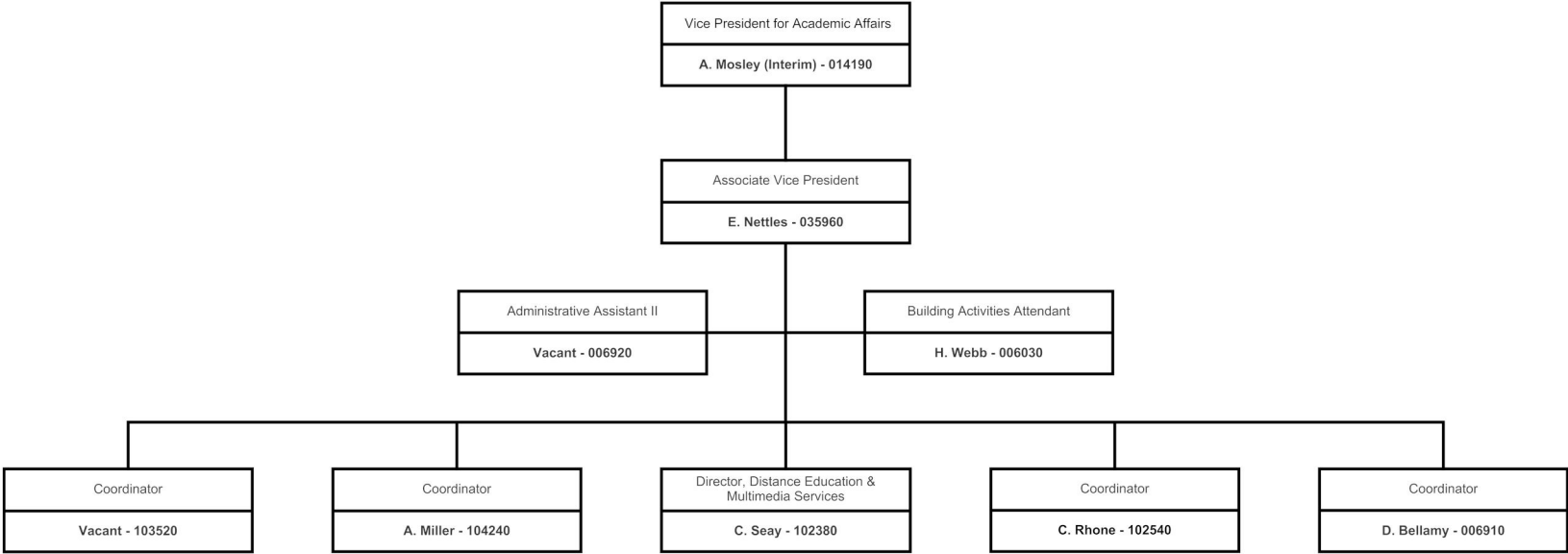


Tennessee State University
Organizational Chart
CENTER FOR ENTREPRENEURSHIP AND ECONOMIC DEVELOPMENT
TN Small Business Development Center
2017-2018
ORG: 12400

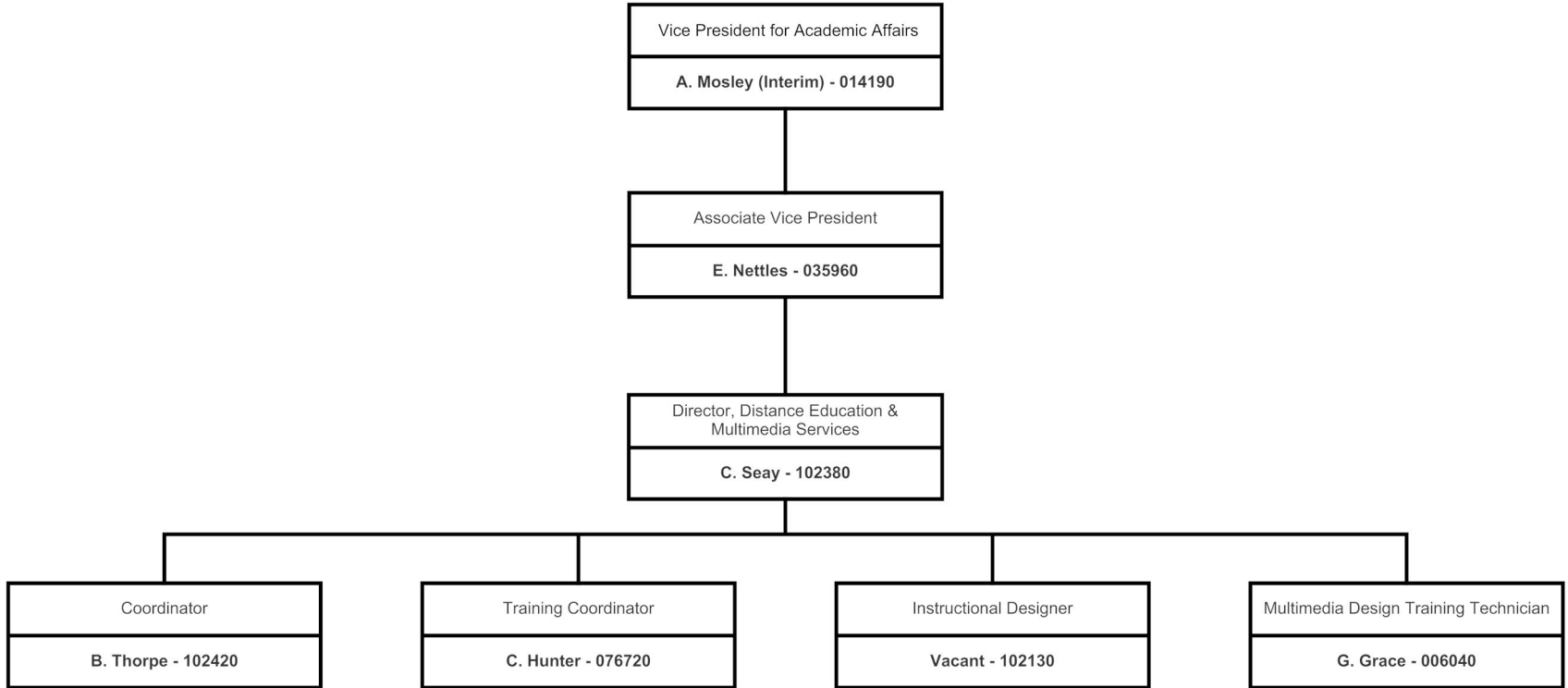


* Restricted

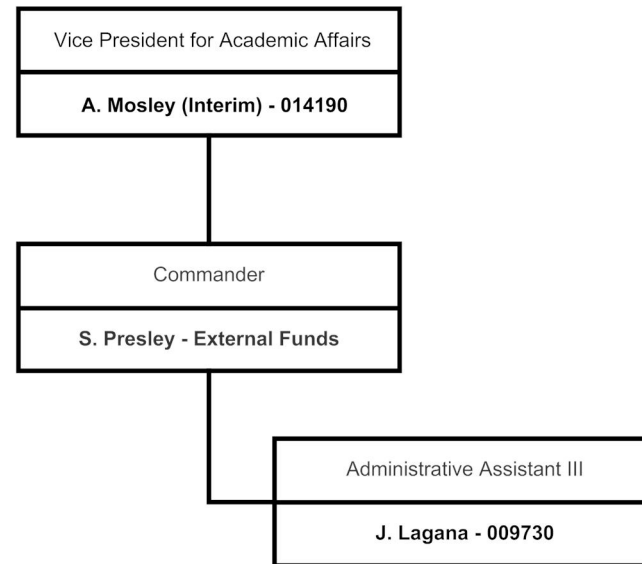
Tennessee State University
Organizational Chart
ACADEMIC AFFAIRS
Extended Education and Public Service
2017-2018
ORG: 12115,17030,17000



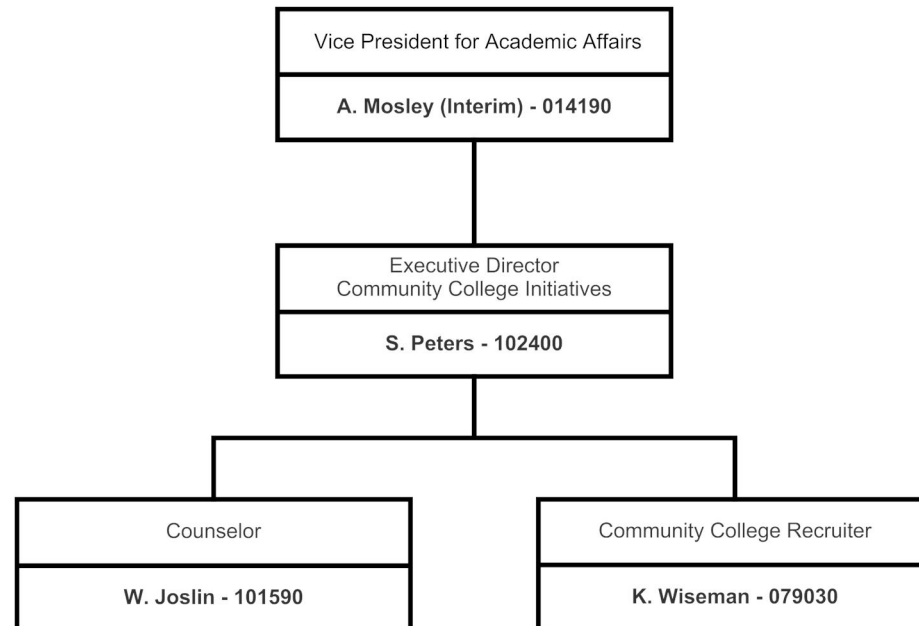
Tennessee State University
Organizational Chart
EXTENDED EDUCATION AND PUBLIC SERVICE
Distance Education and Multimedia Services
2017-2018
ORG: 17030



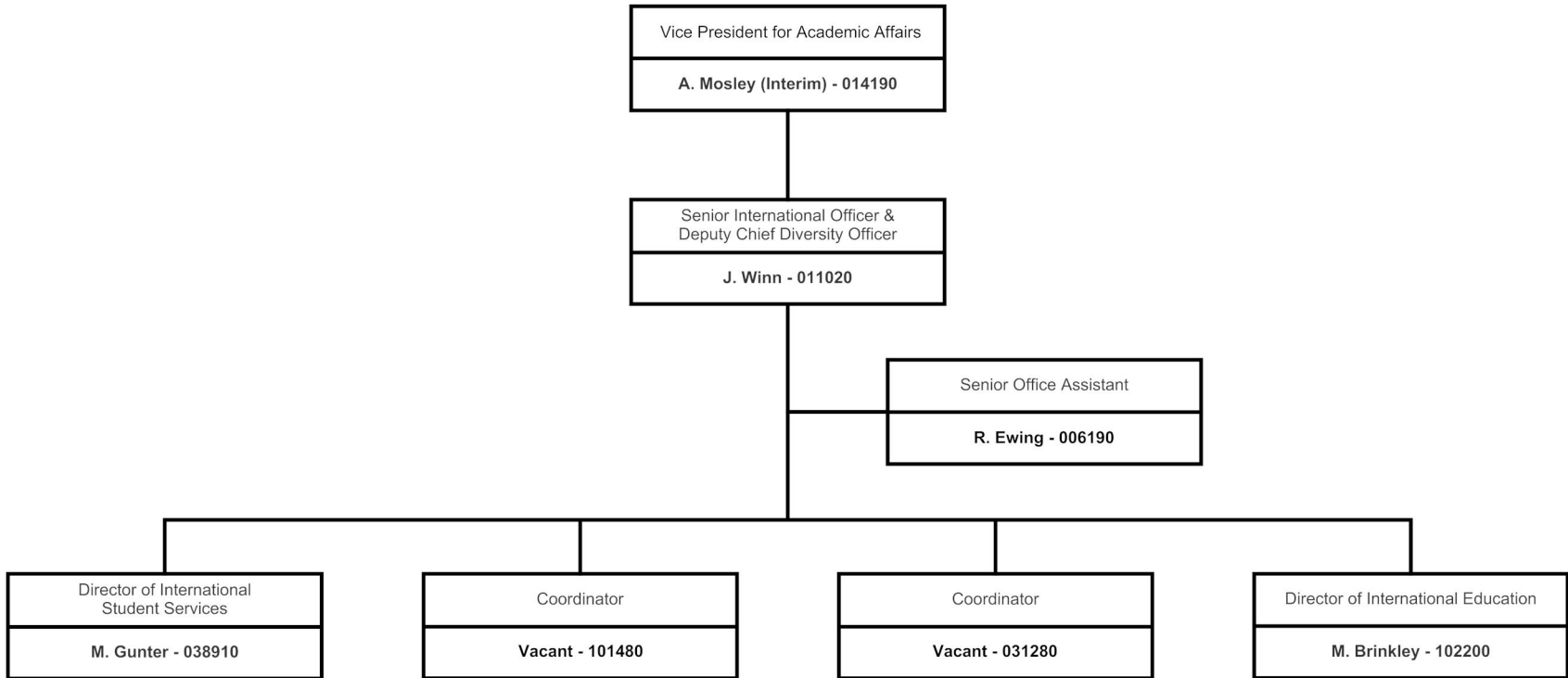
Tennessee State University
Organizational Chart
ACADEMIC AFFAIRS
AFROT
2017-2018
ORG: 13900



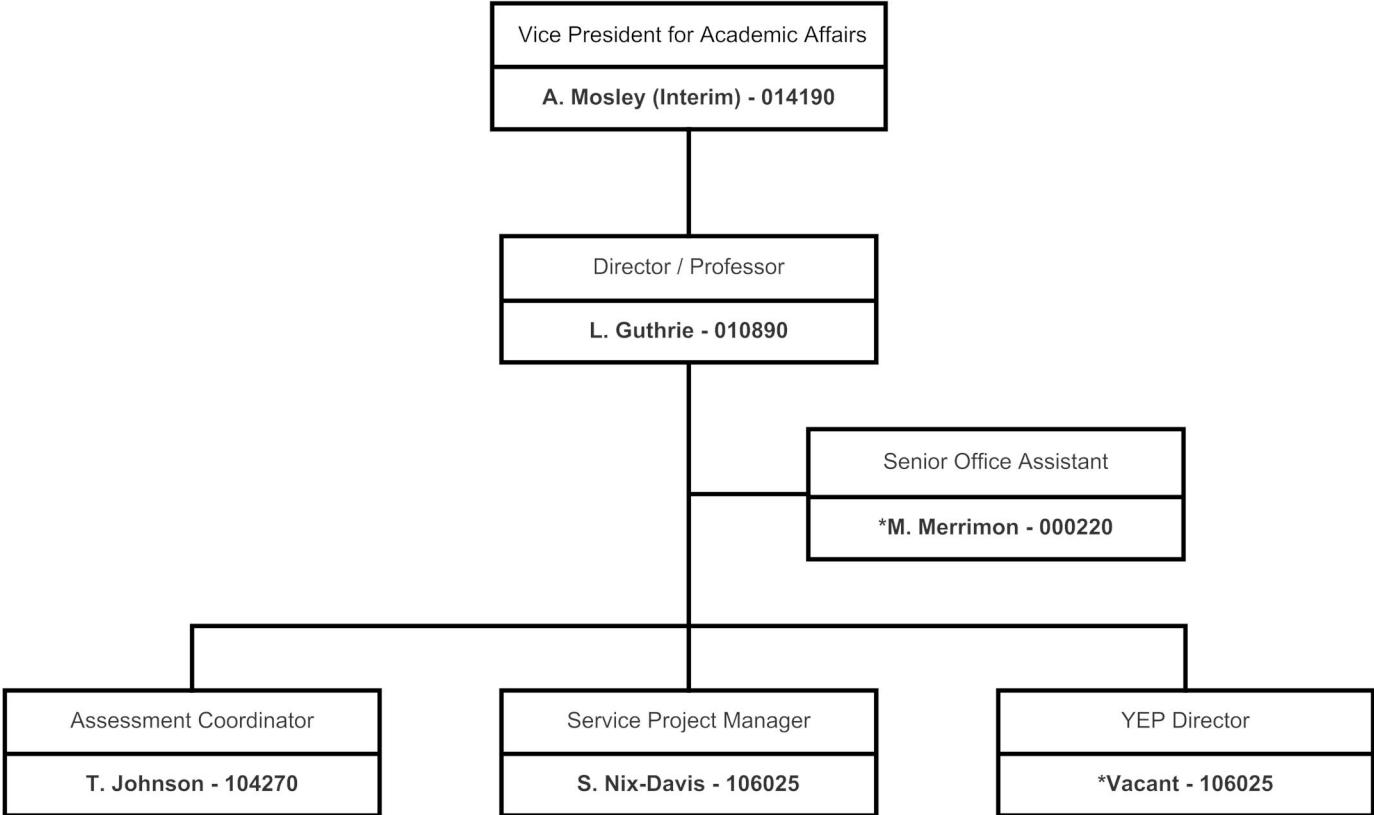
Tennessee State University
Organizational Chart
ACADEMIC AFFAIRS
COMMUNITY COLLEGE INITIATIVES
2017-2018
ORG:12114



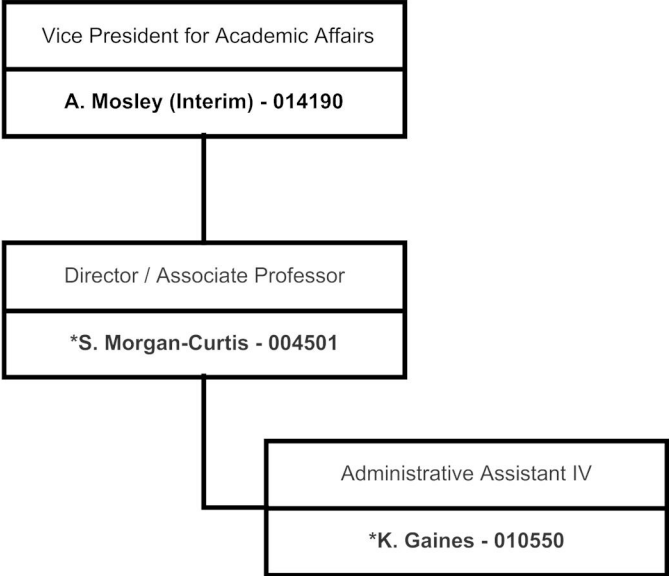
Tennessee State University
Organizational Chart
ACADEMIC AFFAIRS
THE OFFICE OF INTERNATIONAL AFFAIRS
2017-2018
ORG: 11500



Tennessee State University
Organizational Chart
ACADEMIC AFFAIRS
SERVICE LEARNING
2017-2018
ORG: 17040-17041



Tennessee State University
Organizational Chart
ACADEMIC AFFAIRS
WRITE
2017-2018
ORG: 224052-17542



* Restricted